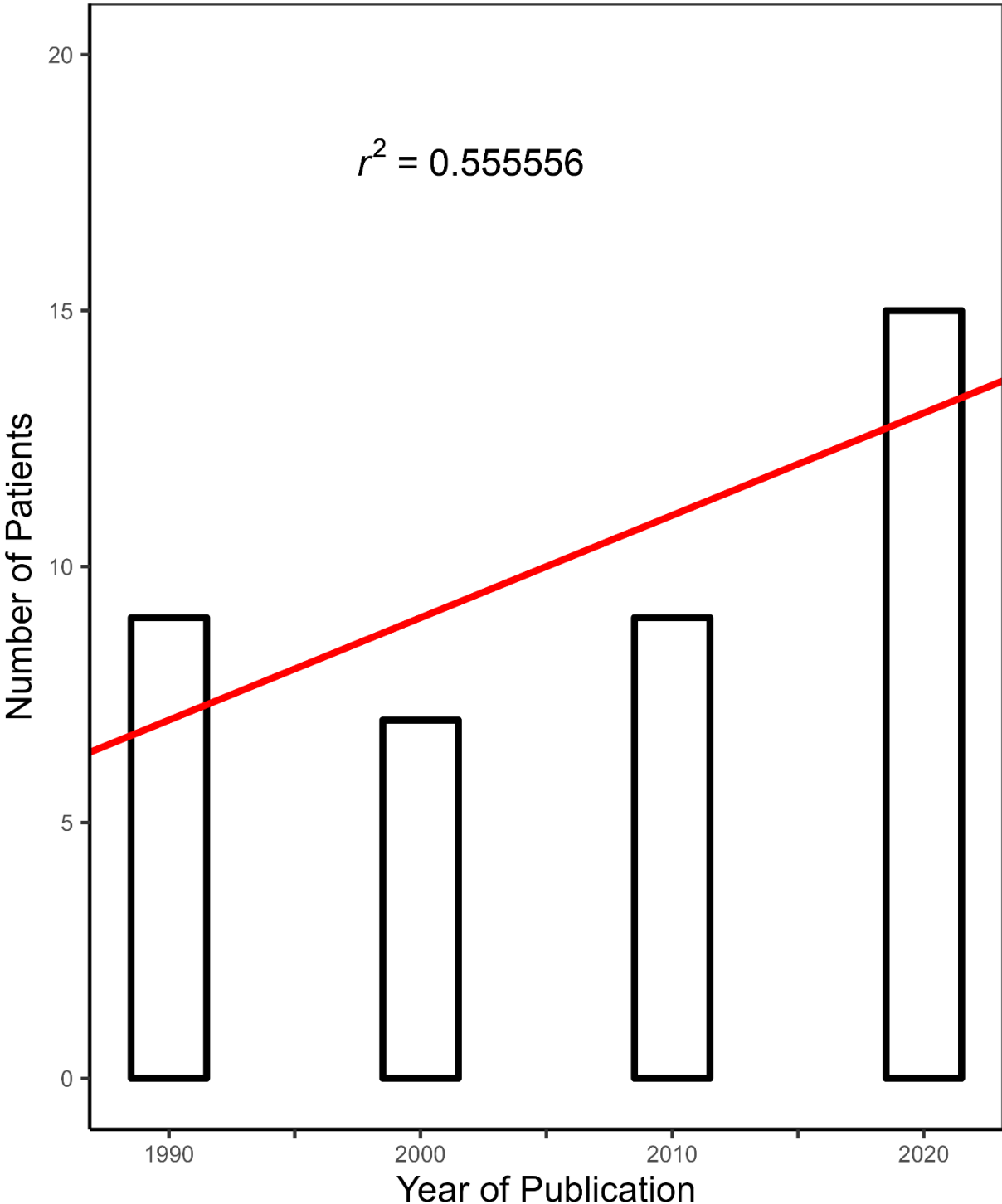


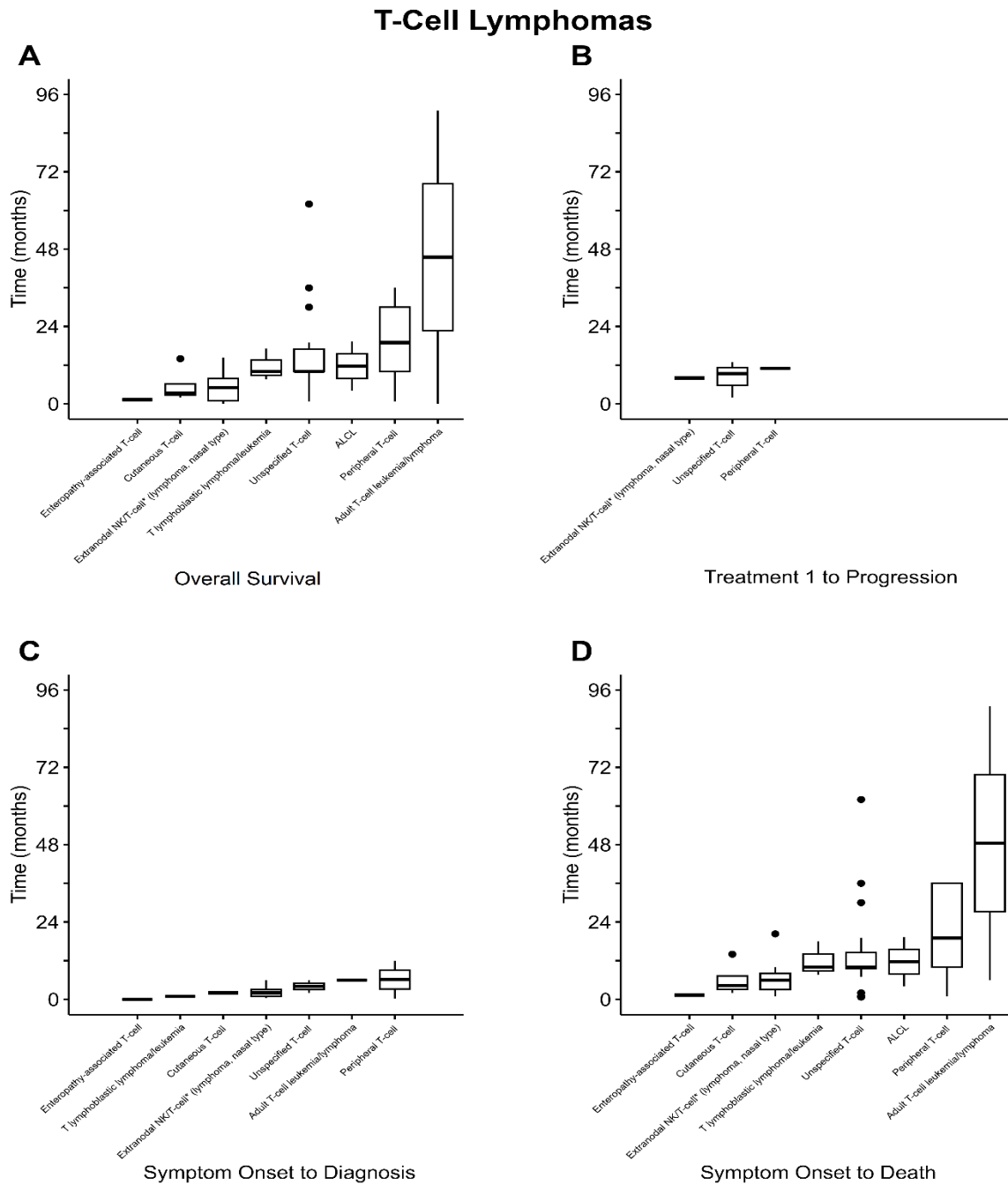
Supplementary Figure 1

### Number of Post-Mortem Diagnoses



Supplemental Figure 1: Regression of the number of post-mortem diagnoses according to year of publication.

## Supplementary Figure 2



Supplemental Figure 2: Kruskal-Wallis analysis of survival according to histological subtypes of T-cell lymphoma. (A) Analysis of OS showed a chi-squared value of 8.5973 with 7 degrees of freedom and  $p=0.2829$ . (B) Analysis of time from treatment 1 to progression showed a chi-squared value of 0.8 with 2 degrees of freedom and  $p=0.6703$ . (C) Analysis of time from symptom onset to diagnosis showed a chi-squared value of 4.6854 with 6 degrees of freedom and  $p=0.5847$ . (D) Analysis of time from symptom onset to death showed a chi-squared value of 8.489 with 7 degrees of freedom and  $p=0.2915$ . See also Supplemental Table 7A-D.