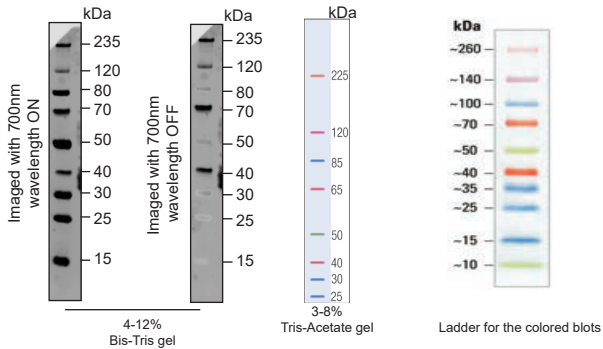
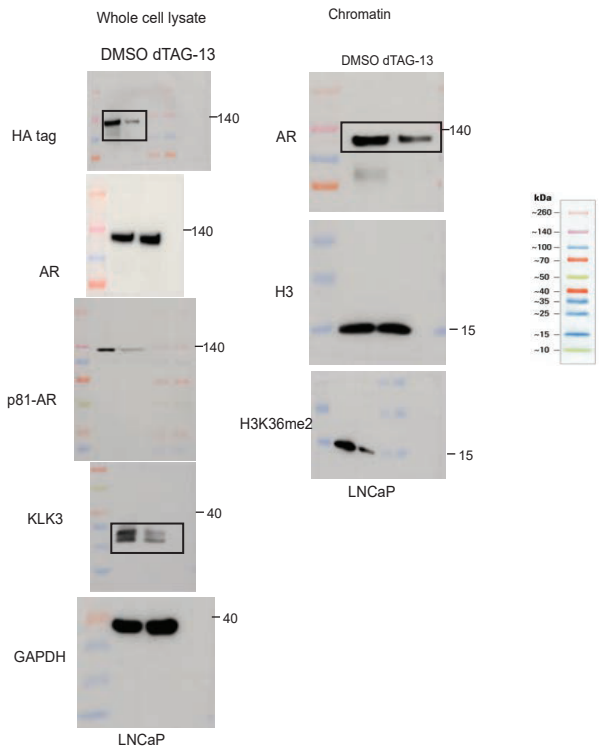


### Key of the BR Spectra ladder (imaged on LiCOR)

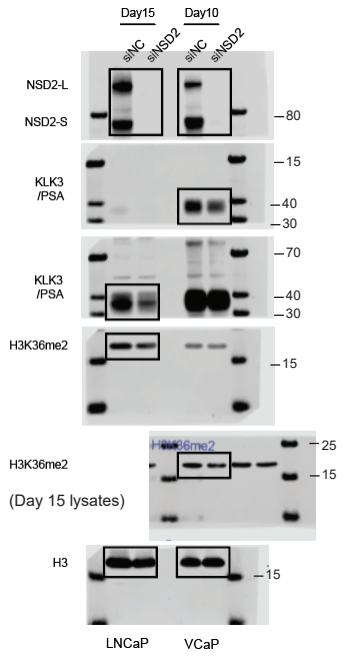


Note: All gels are Bis-Tris unless specified as a Tris-Acetate (TA gel)

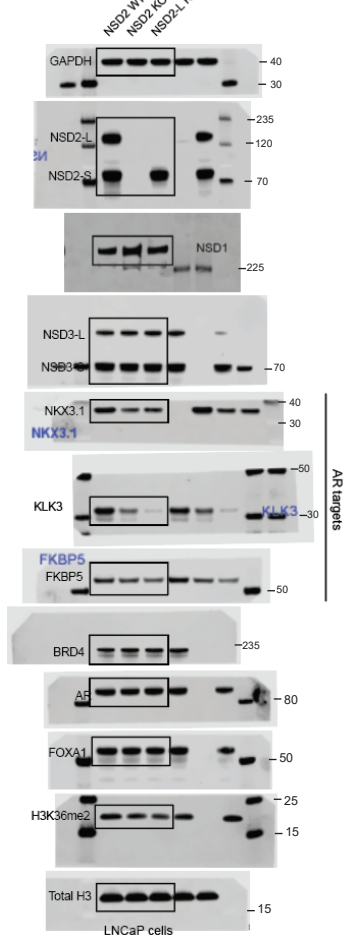
### Fig.3 f



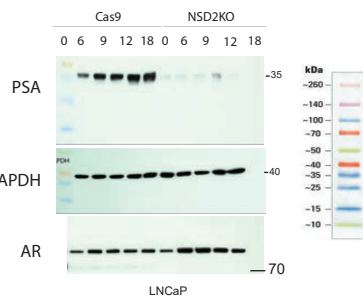
### Fig. 1d



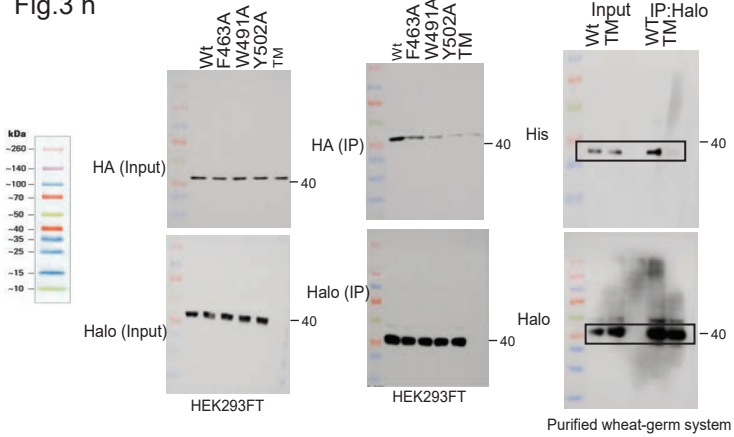
### Fig. 1f



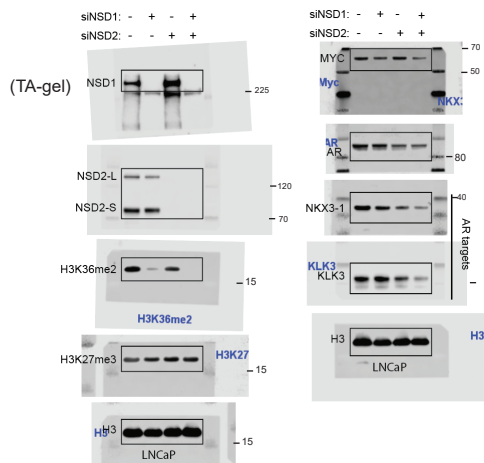
### Fig. 1h



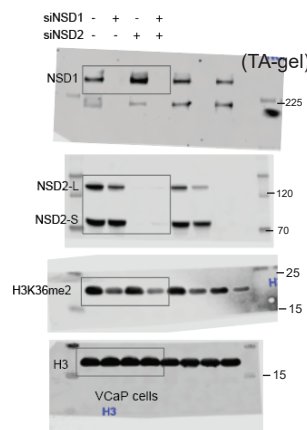
### Fig.3 h



### Fig. 3m



### Fig. 3j



### Fig. 3l

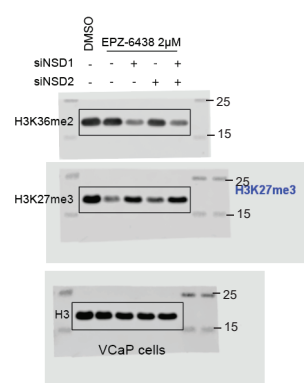


Fig. 4b

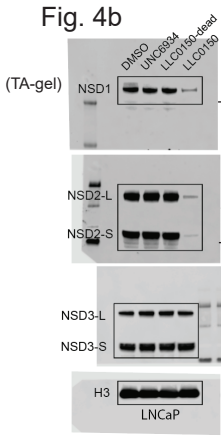
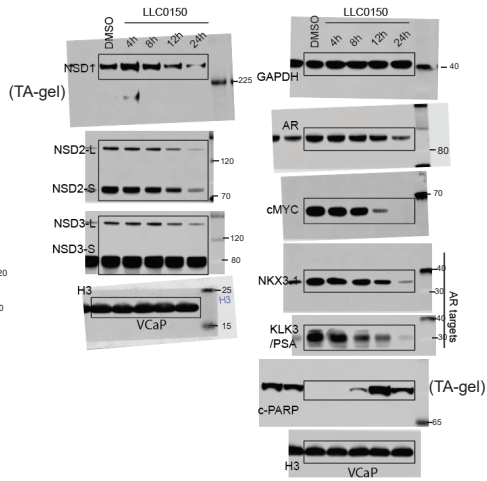
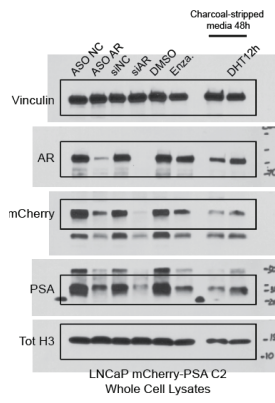


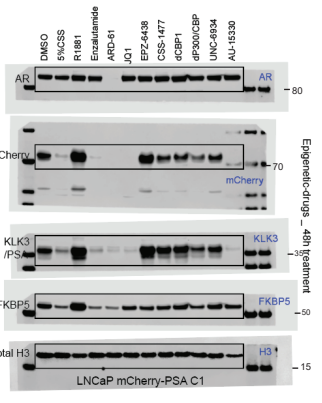
Fig. 4c



ED Fig. 1e

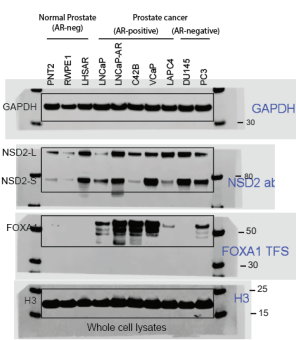


ED Fig. 1g

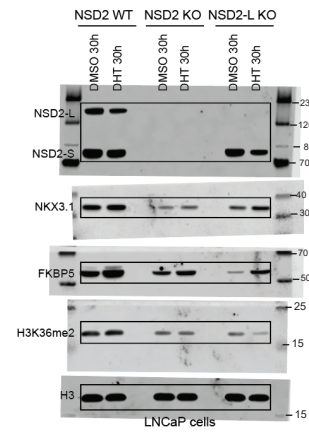


Please note that ED Fig. 1e are radiographic blots and thus the molecular weight ladders are hand noted.  
Note: mCherry in the above plots is running at ~70 due to a P2A in-frame fusion with PSA.

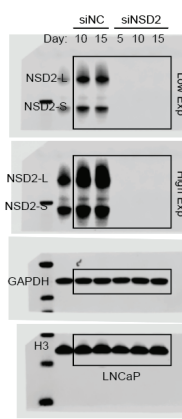
ED Fig. 2a



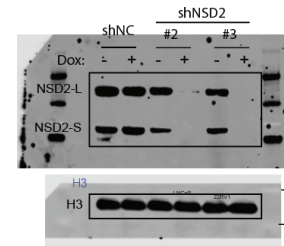
ED Fig. 2d



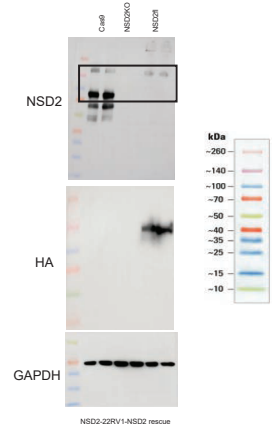
ED Fig. 5a (Top)



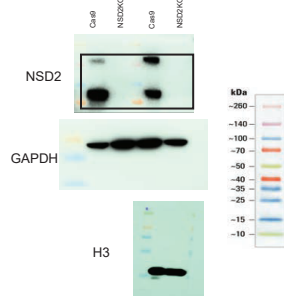
ED Fig. 5b



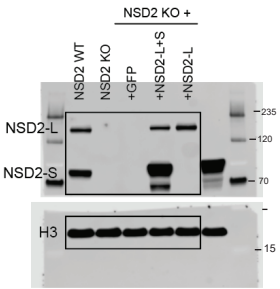
ED Fig. 5d



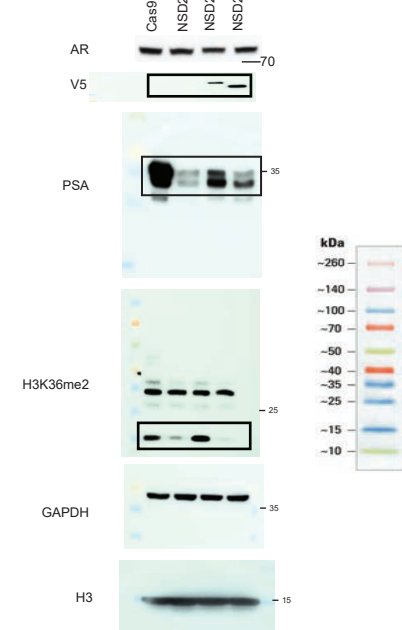
ED Fig. 5a (Bottom)



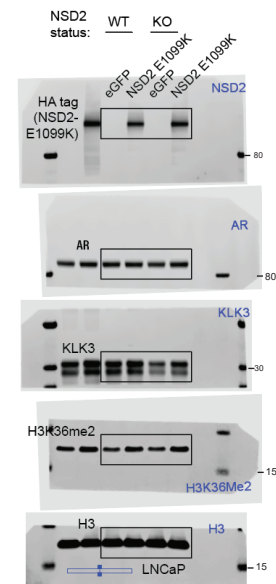
ED Fig. 5e



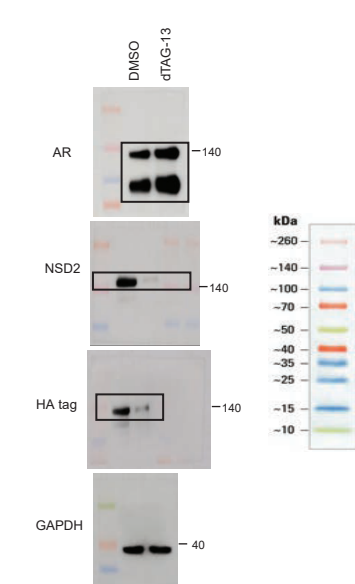
ED Fig. 5g



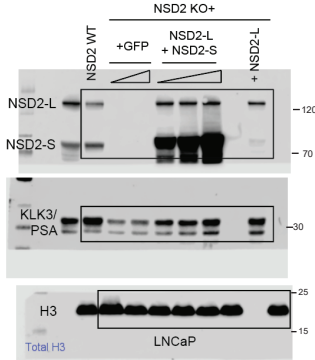
ED Fig. 5h



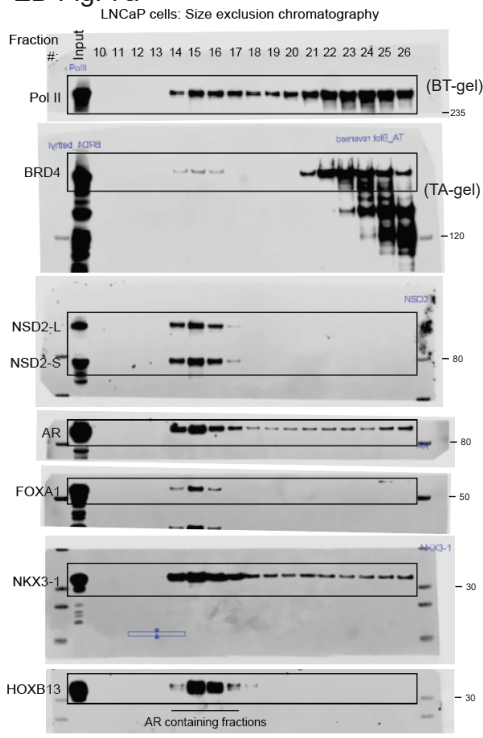
ED Fig. 5i



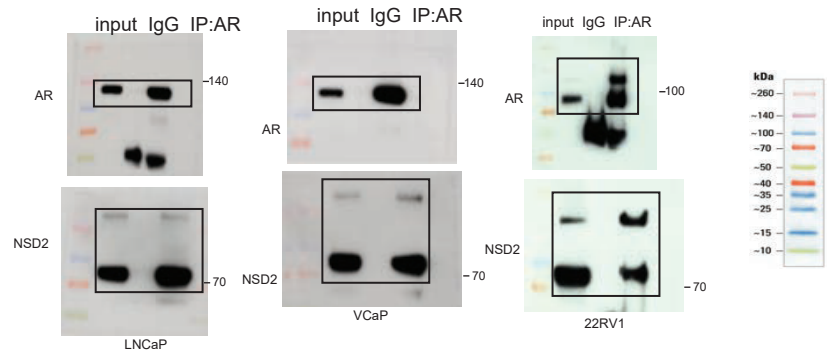
ED Fig. 5f



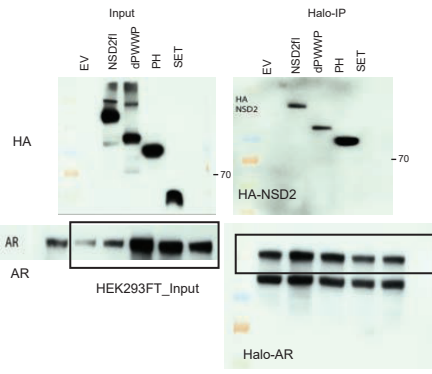
ED Fig. 7a



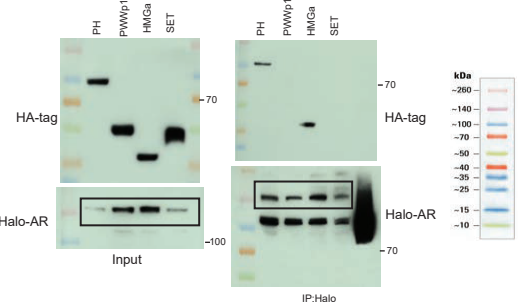
ED Fig. 7b



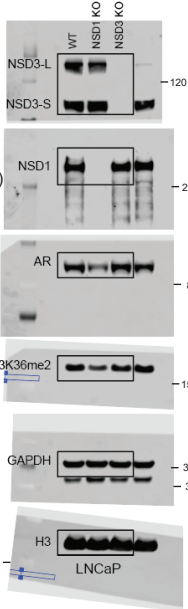
ED Fig. 7c (Left)



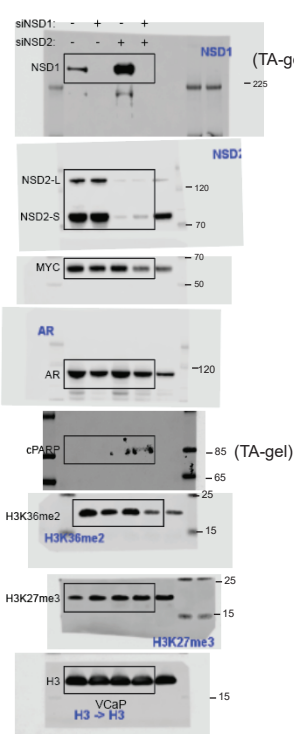
ED Fig. 7c (Right)



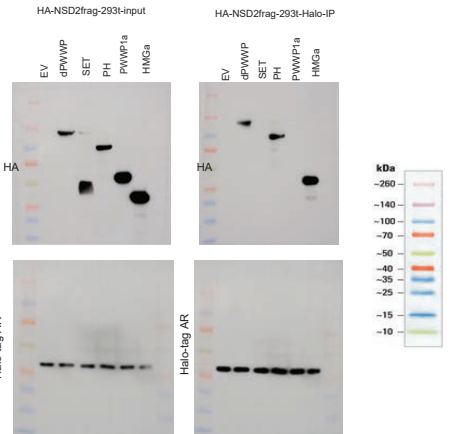
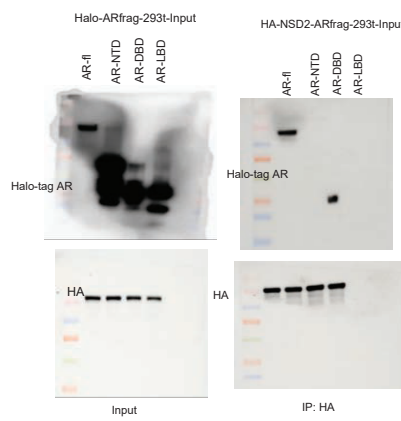
ED Fig. 7g



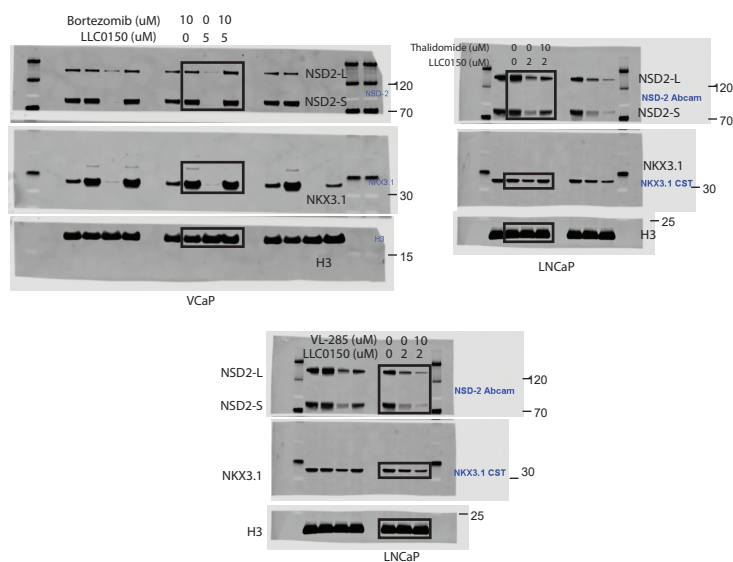
ED Fig. 7i



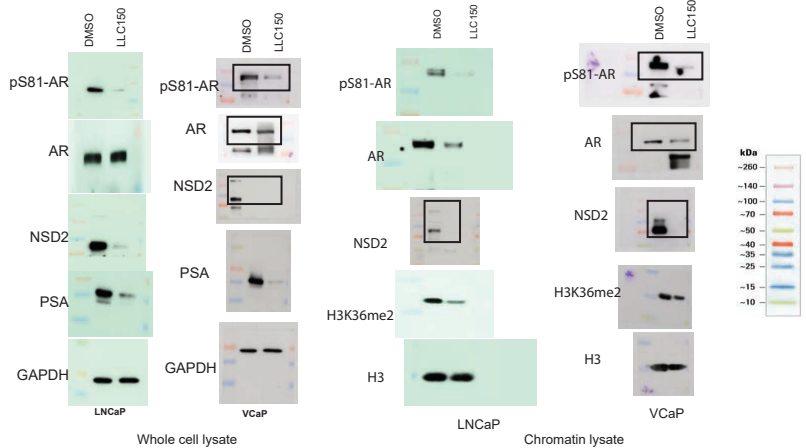
ED Fig. 7d



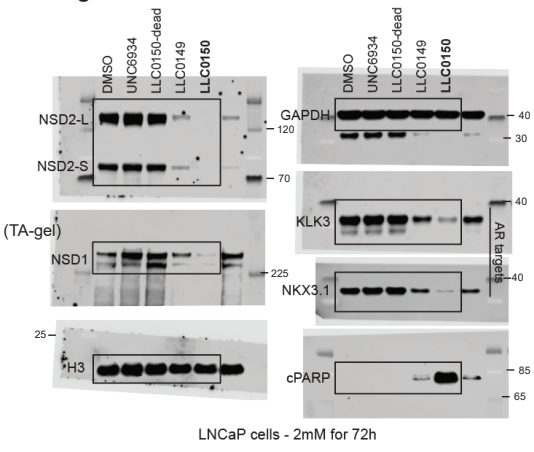
ED Fig. 8a



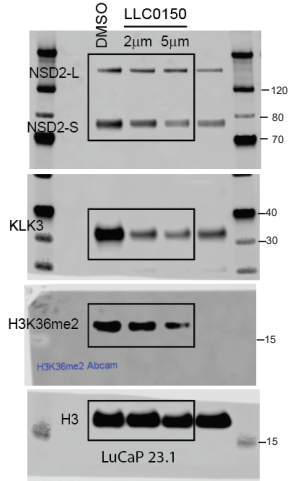
ED Fig. 8d



ED Fig. 9b



ED Fig. 10b



ED Fig. 10g

