
Table of Contents

.....	1
SBM ICA Parameters	1
ICASSO Plots	2
SBM components	2
PCA components variance summary	18
ICA components variance summary	19
Kurtosis of loading coefficients and spatial maps	19
FNC correlations of subject loadings	21
FNC metrics of component spatial maps	22

SBM ICA Parameters

.....

Number of Independent Components : 17

ICA Algorithm : Infomax

Number Of Subjects : 175

Mask File : Default Mask Created From Structural Data

PCA Type : Standard

Scaling Components : Z-scores

Stability analysis type : none

*Anatomical file: /Users/christopherweise/Desktop/gift-master/GroupICAT/icatb/
icatb_templates/ch2bet_3x3x3.nii*

Slice Plane: Axial

Image values: Positive and negative

Convert to Z-scores: yes

Threshold: 2

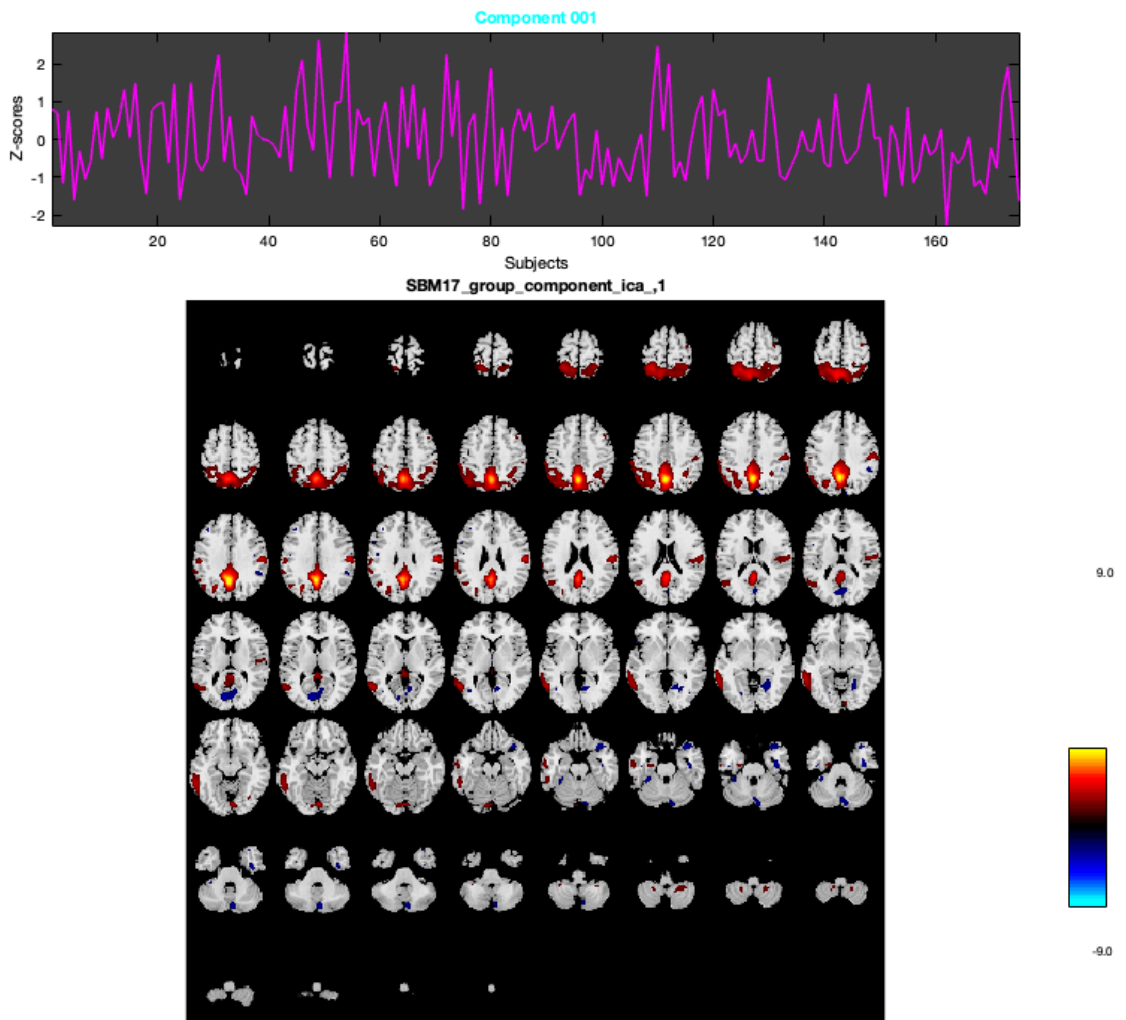
.....

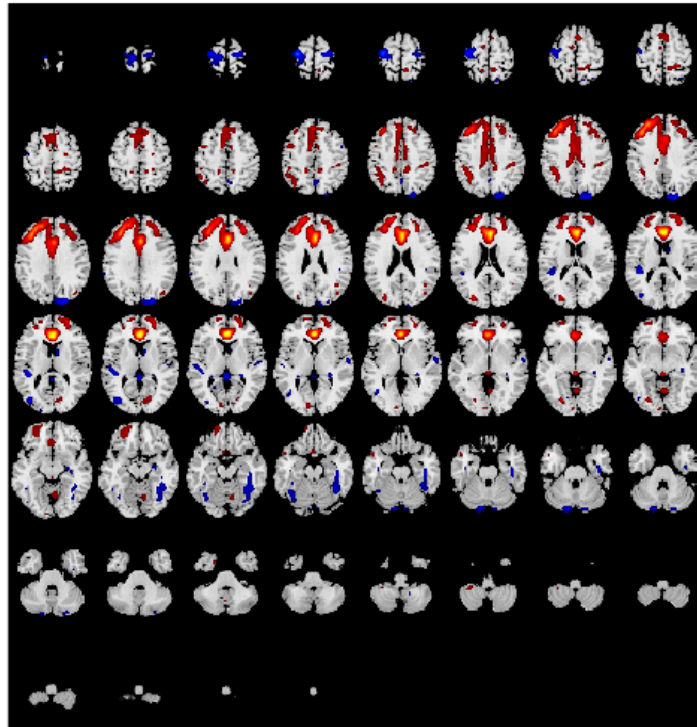
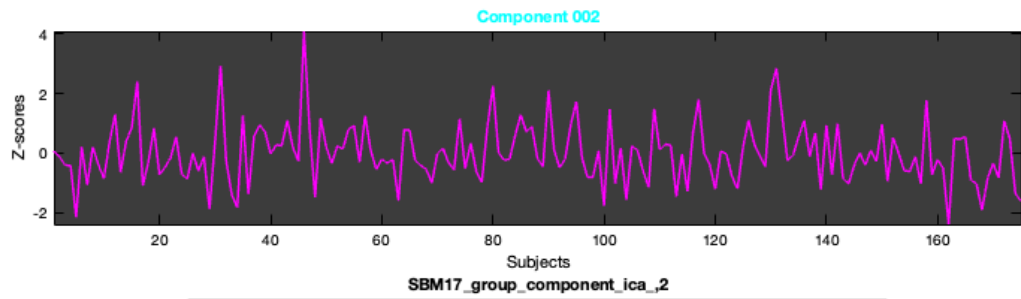
ICASSO Plots

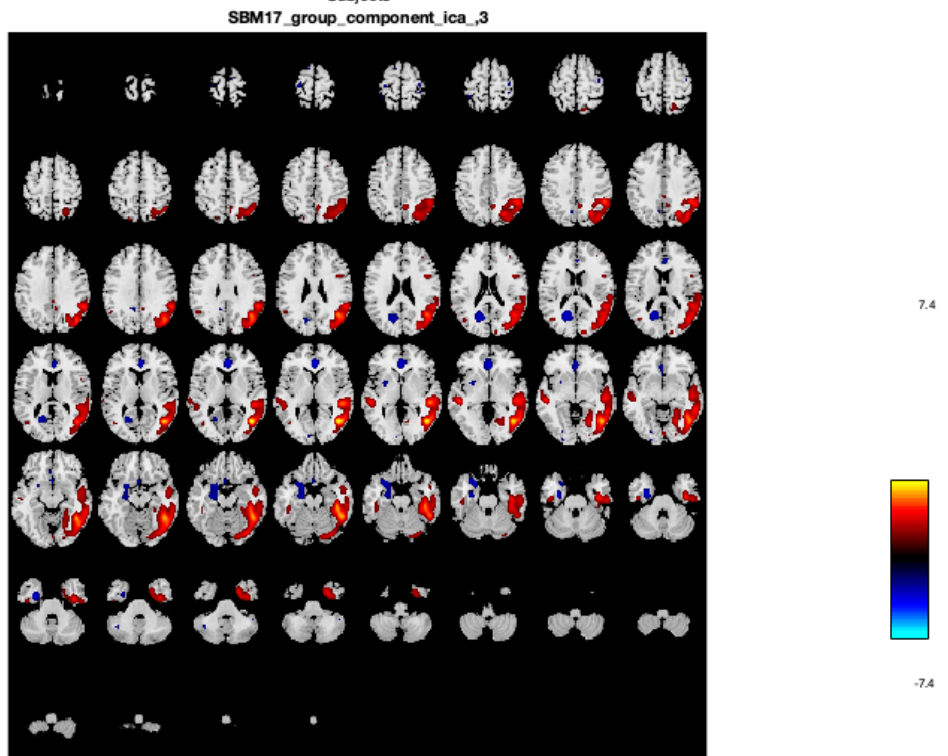
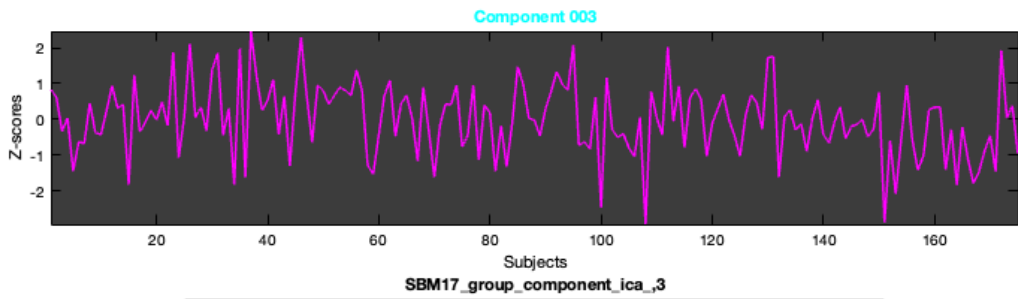
SBM components

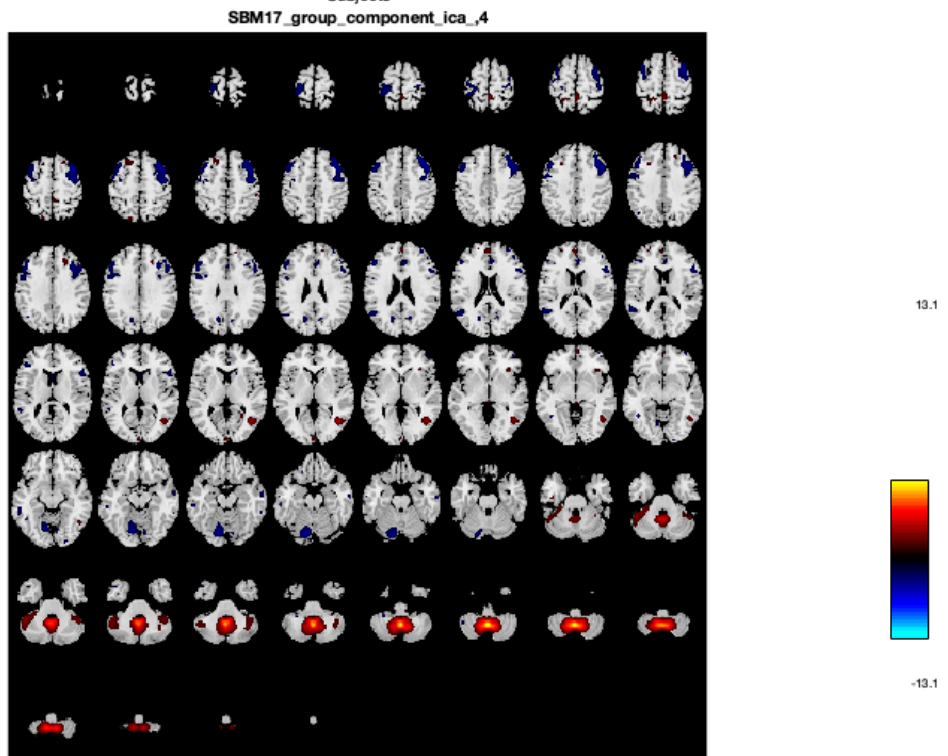
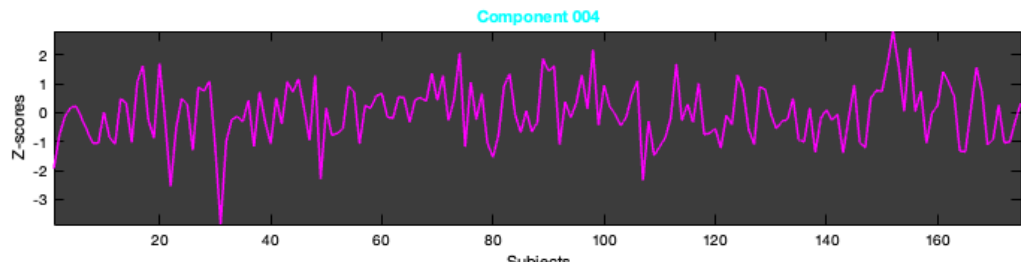
Group spatial maps and subject loading coefficients

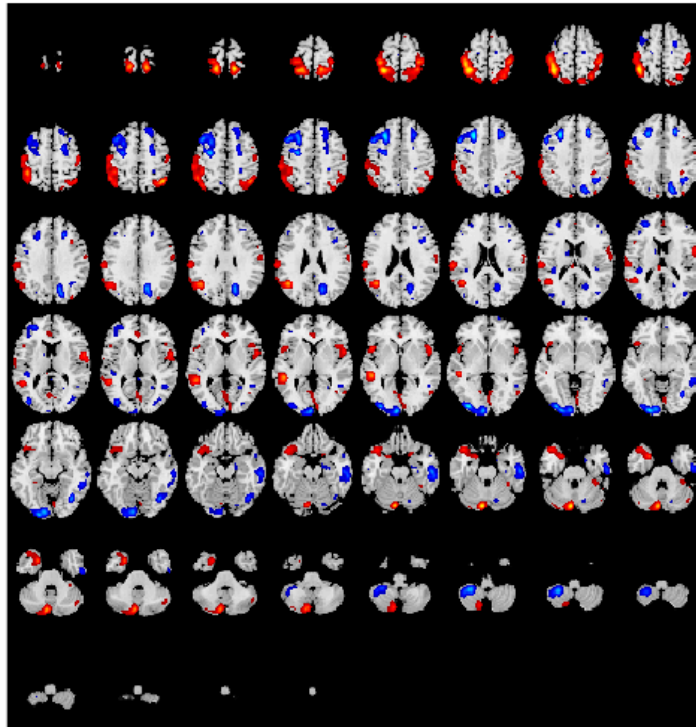
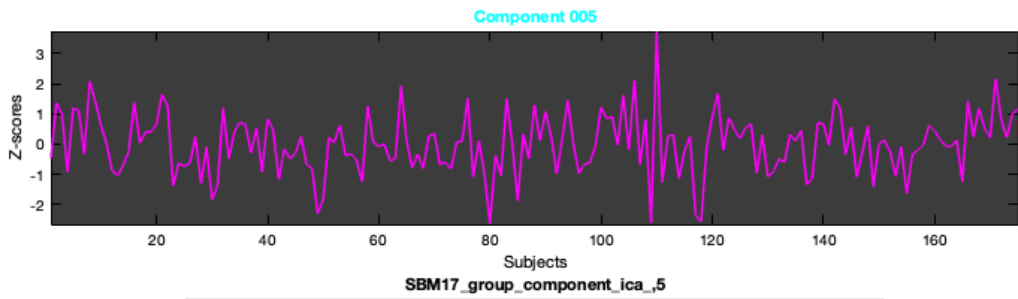
- a) Subject loading coefficients
- b) Group spatial maps

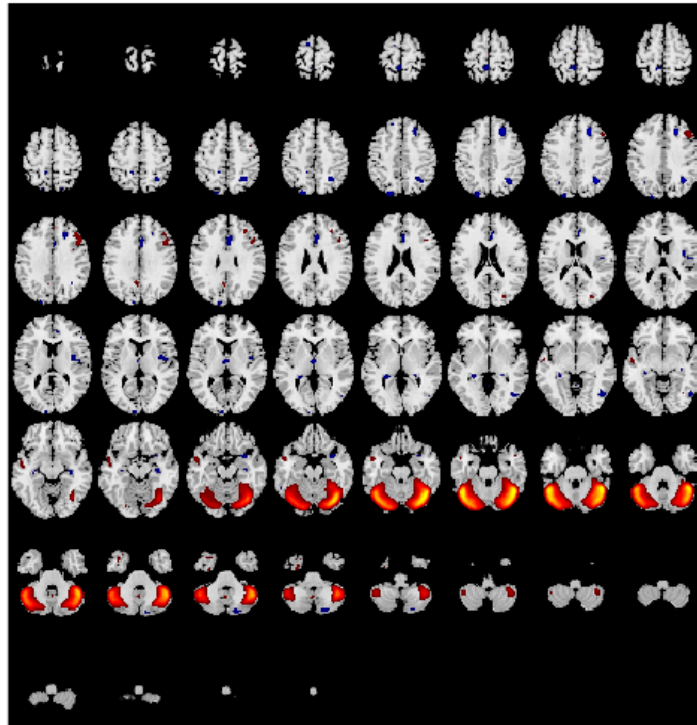
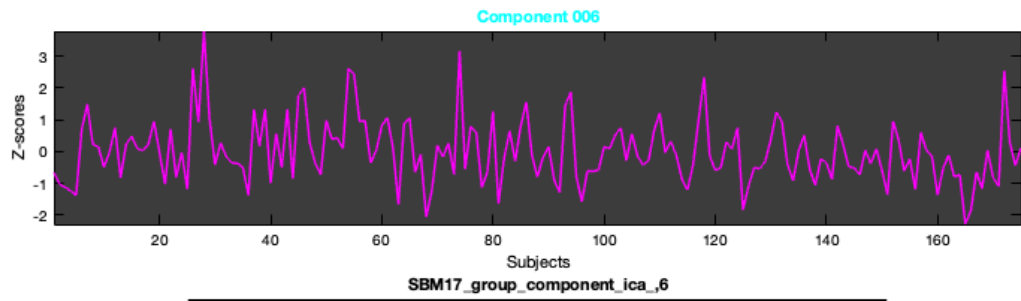


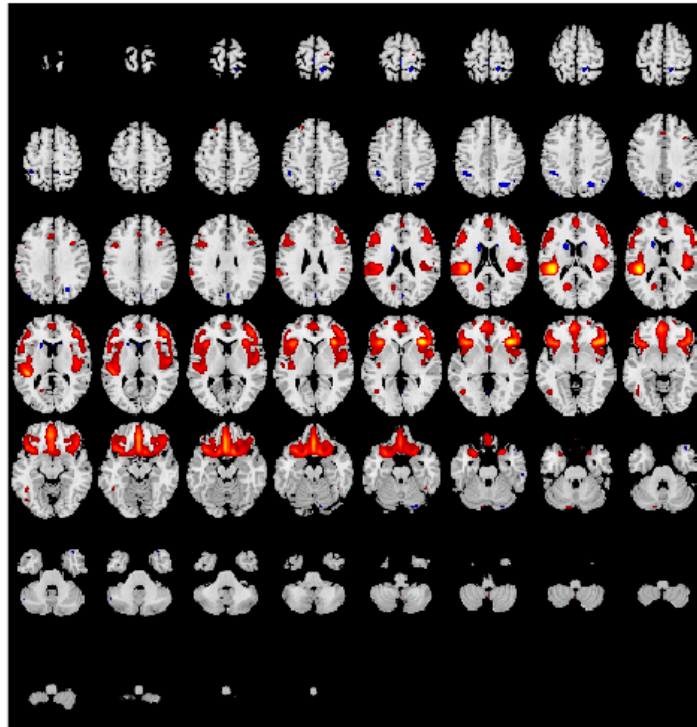
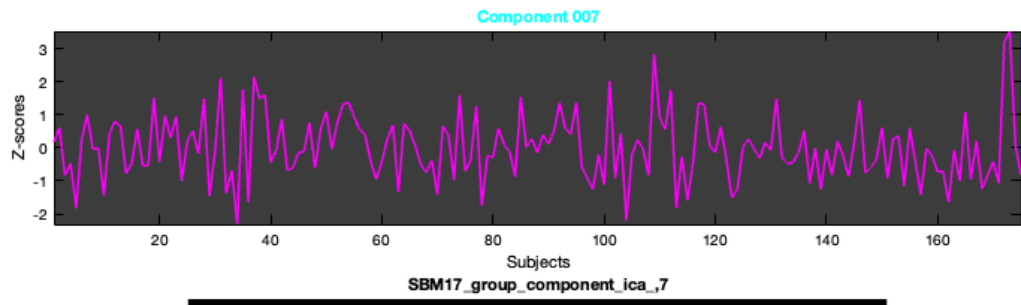








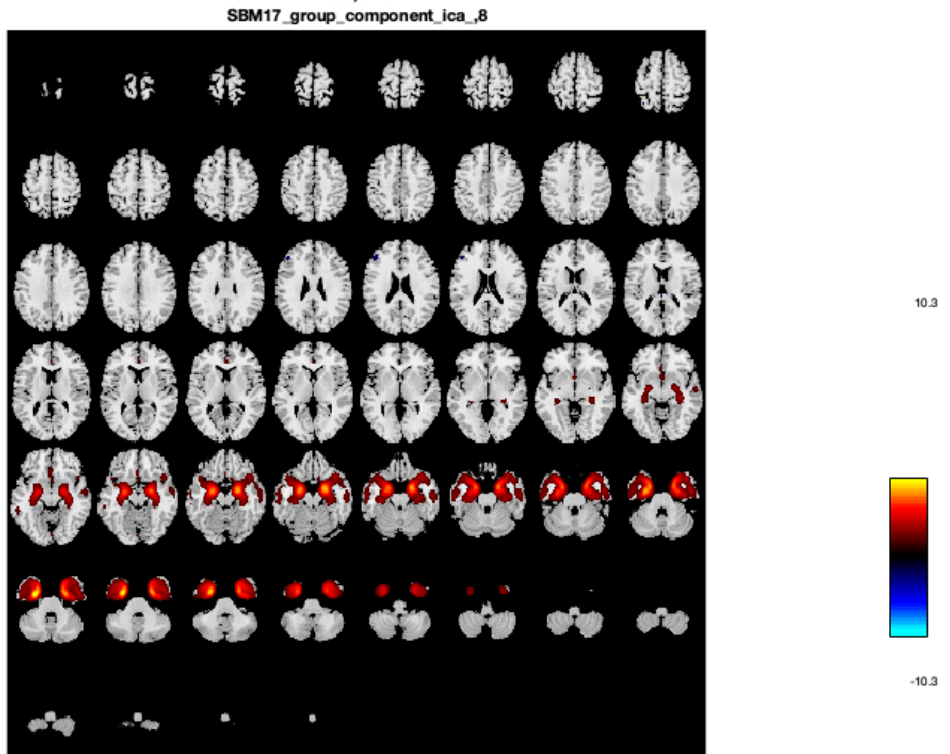
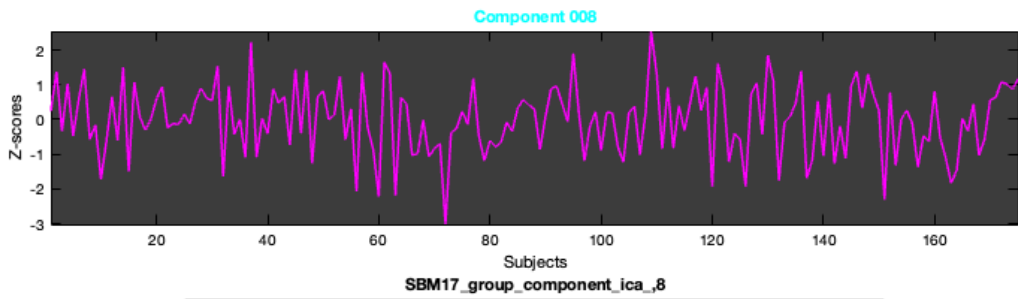


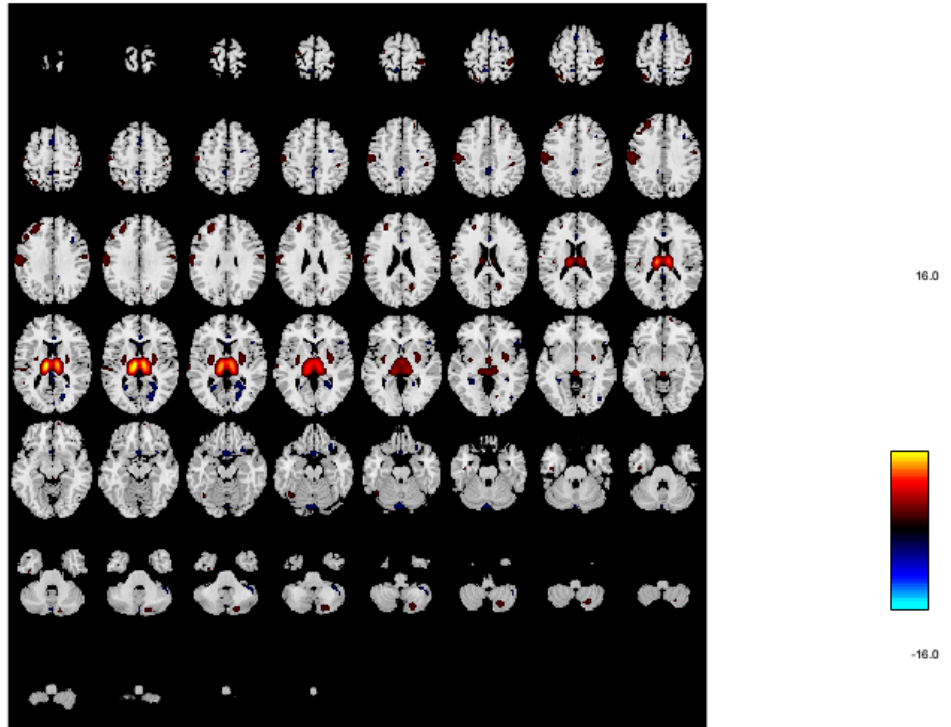
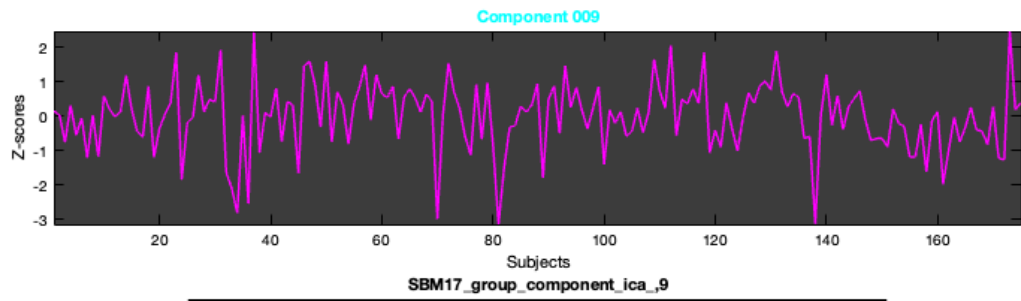


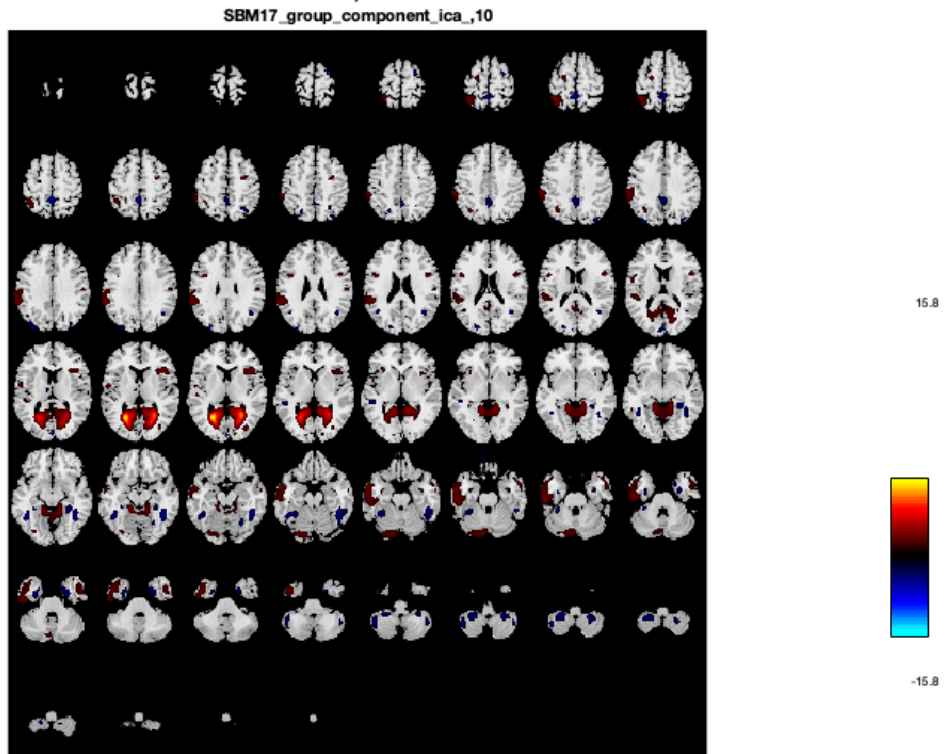
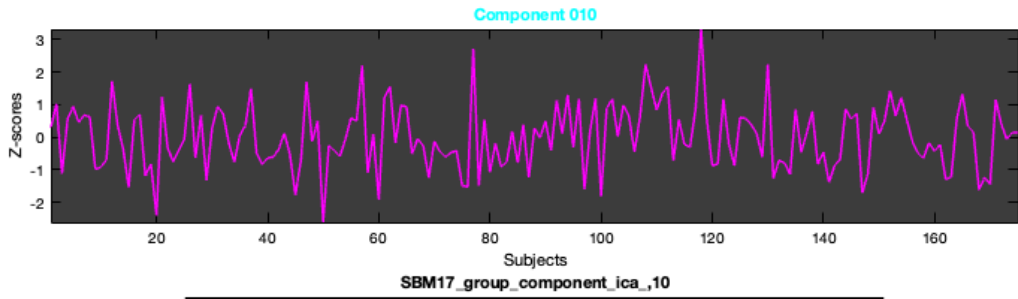
5.7

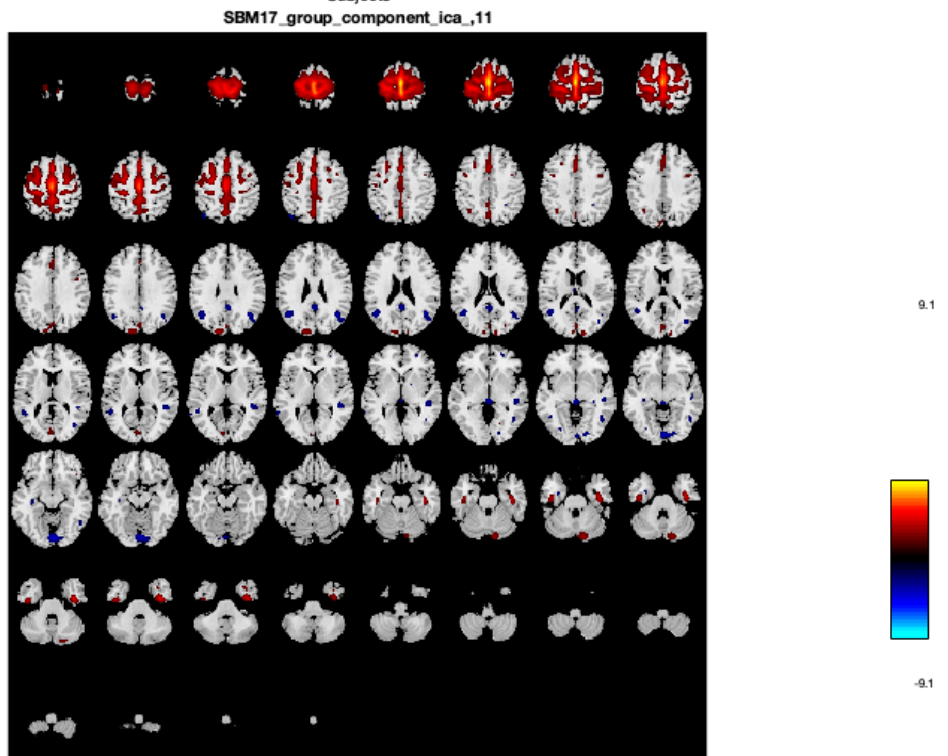
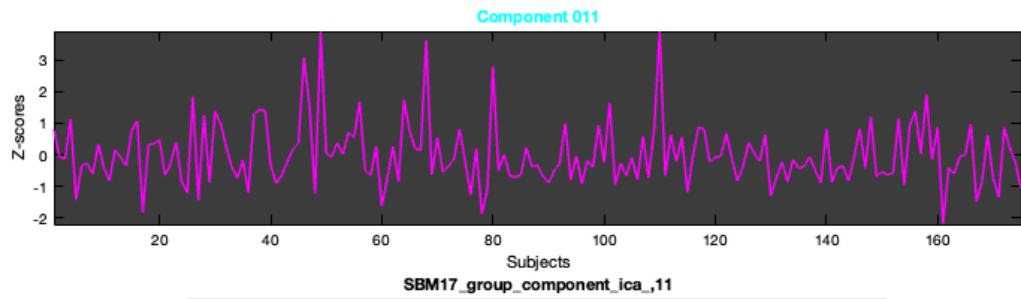


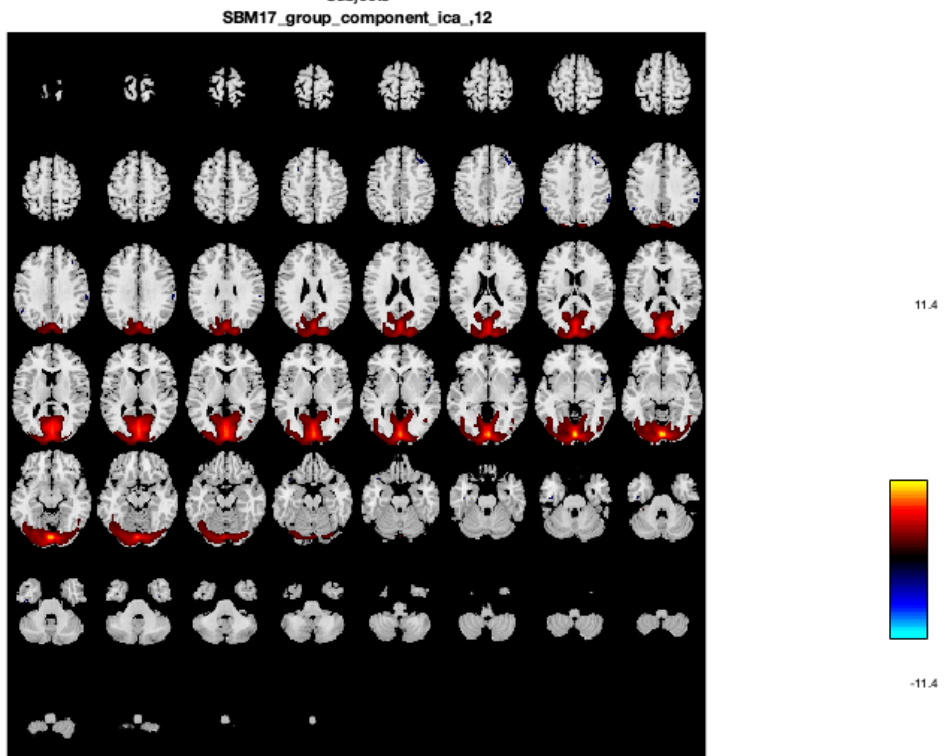
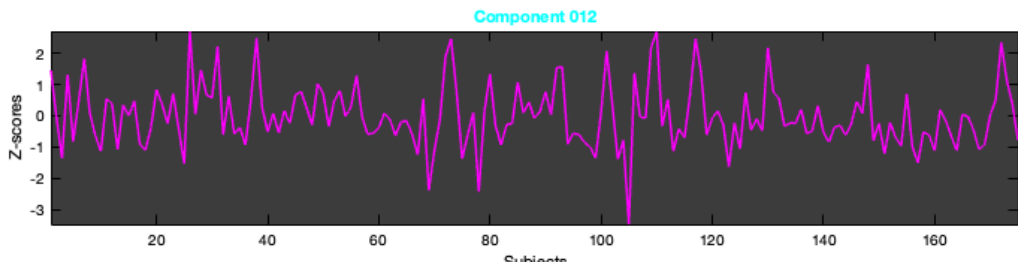
-5.7

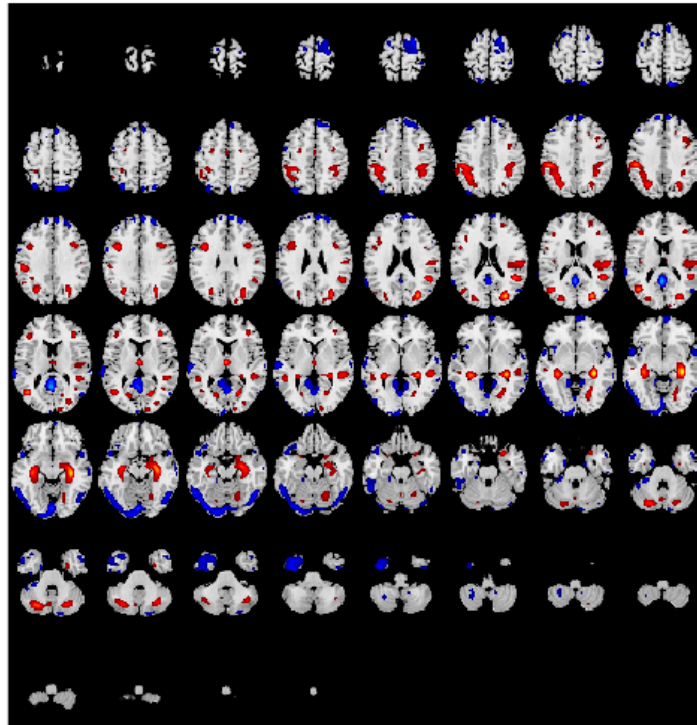
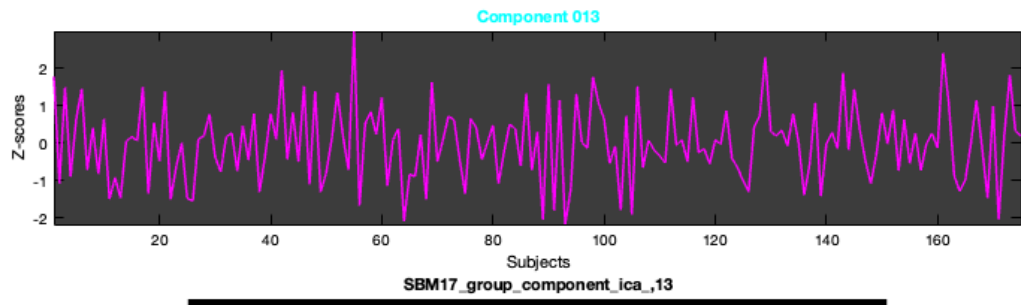


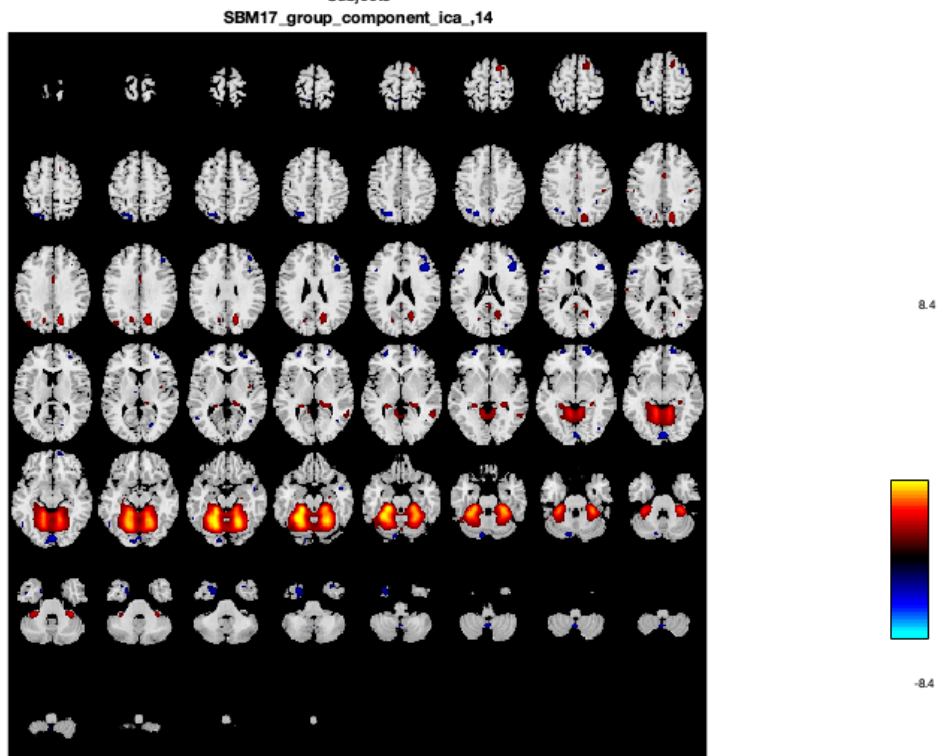
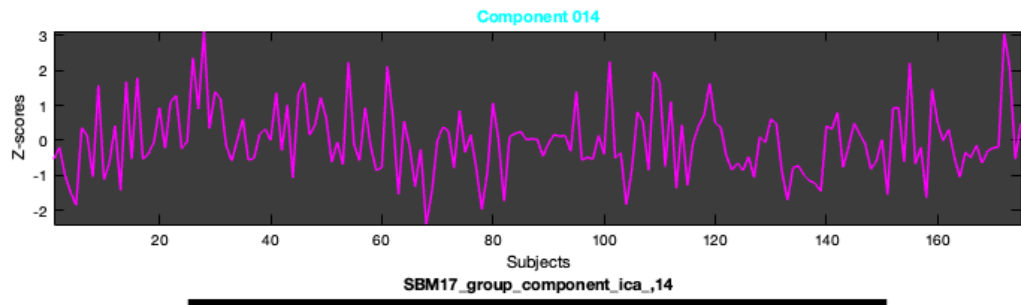


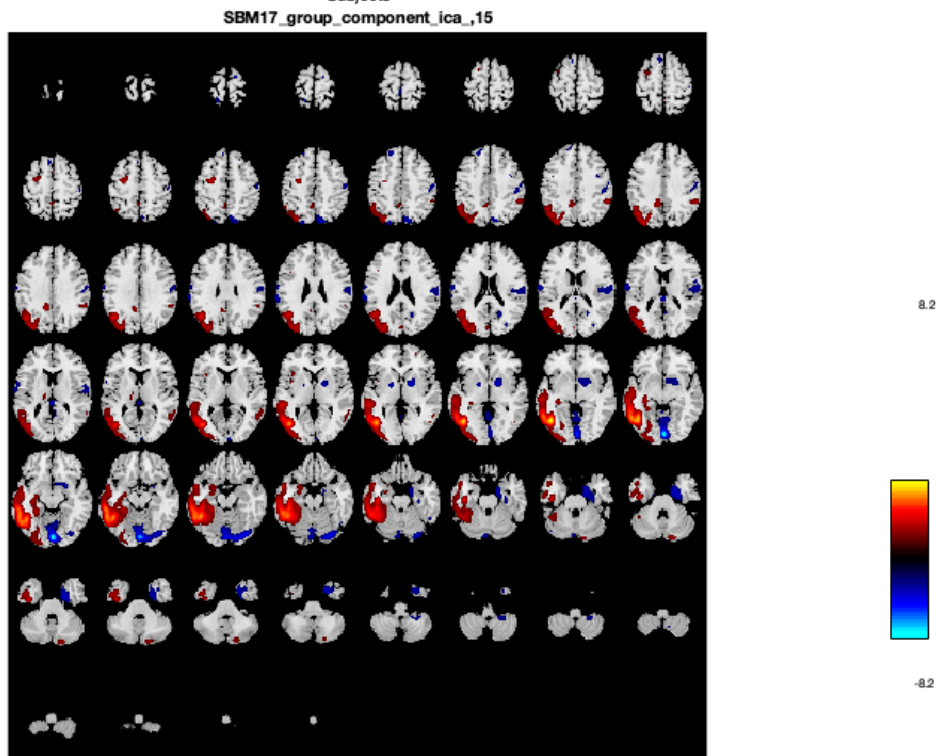
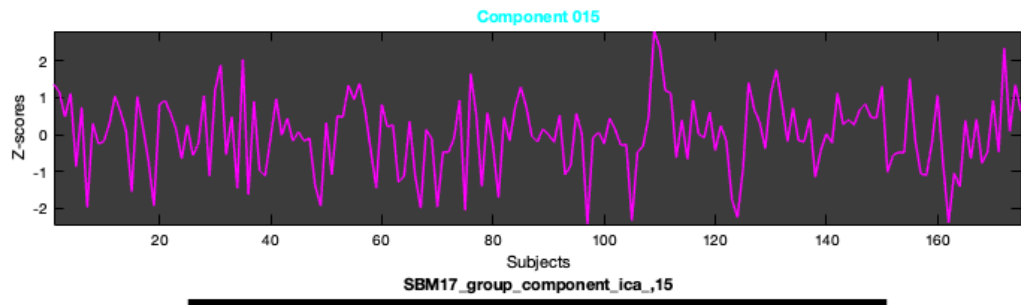


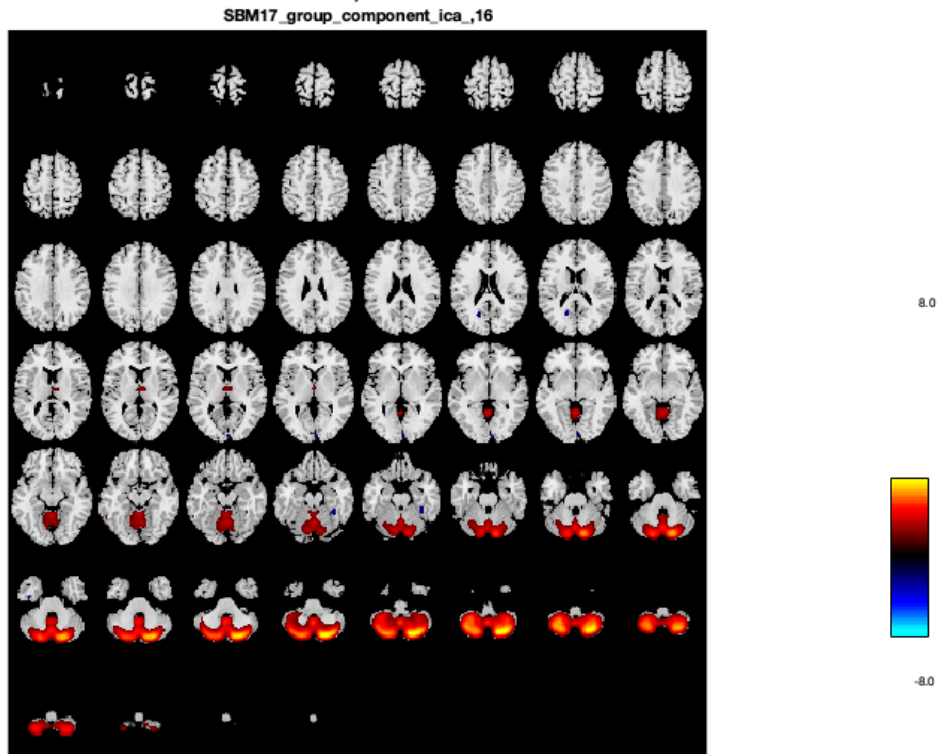
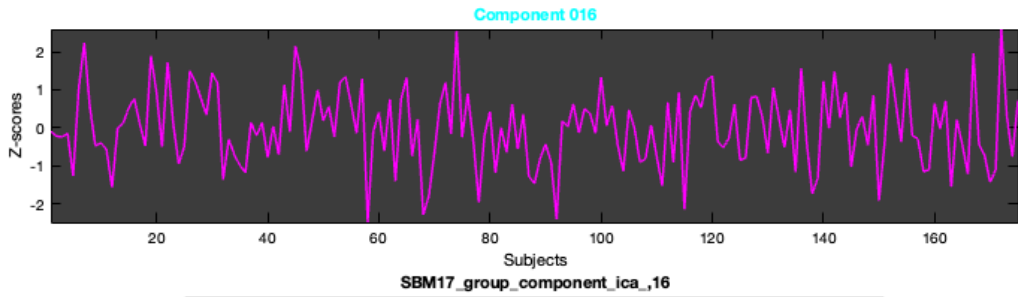


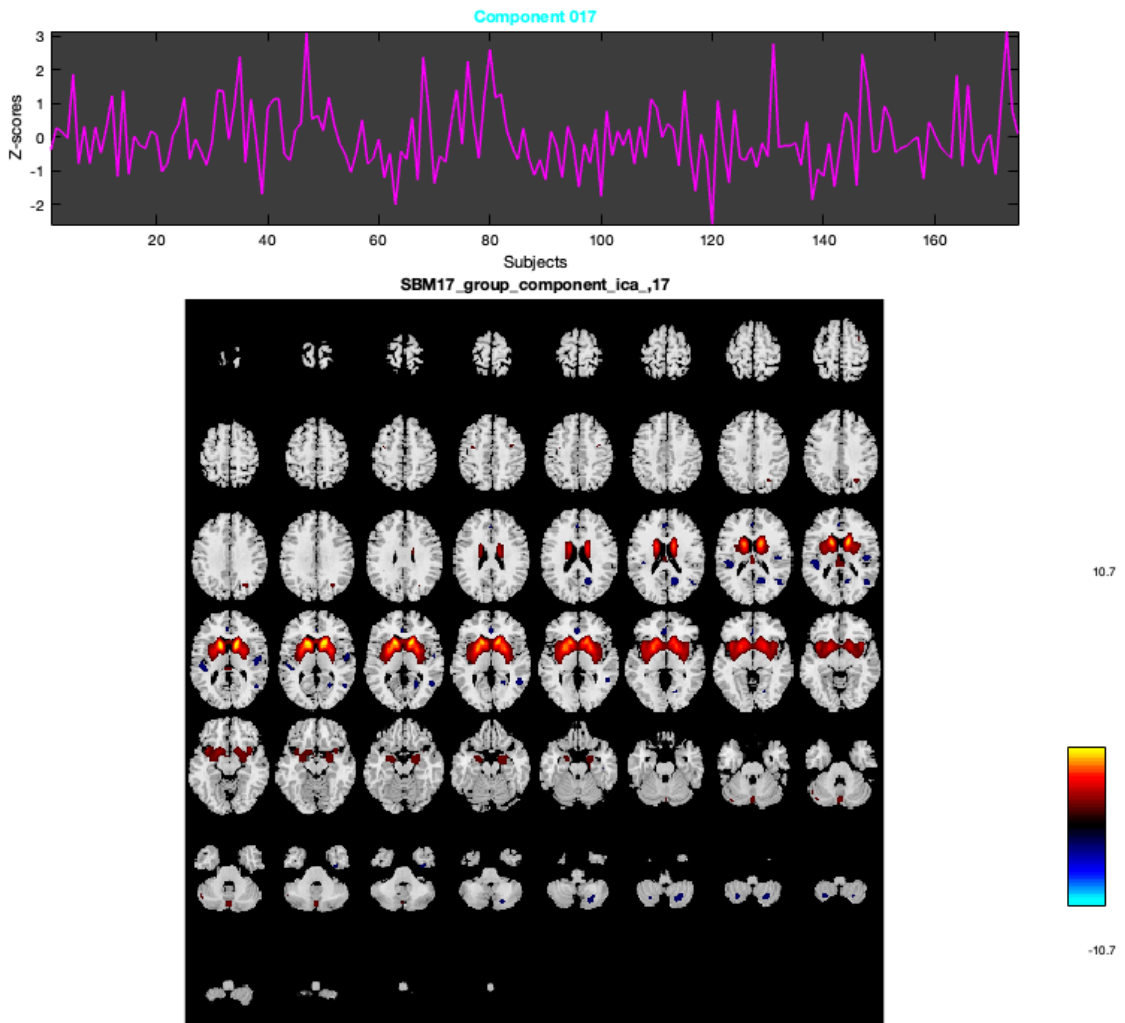












PCA components variance summary

- **Percent variance** - Percent variance is reported for each component.

<i>ComponentNumber</i>	<i>PercentVariance</i>
1	0.075218
2	0.075913
3	0.078431
4	0.081044
5	0.084658
6	0.08698
7	0.094783

8	0.099173
9	0.11207
10	0.12076
11	0.13245
12	0.1721
13	0.20042
14	0.21769
15	0.33524
16	0.42956
17	94.211

ICA components variance summary

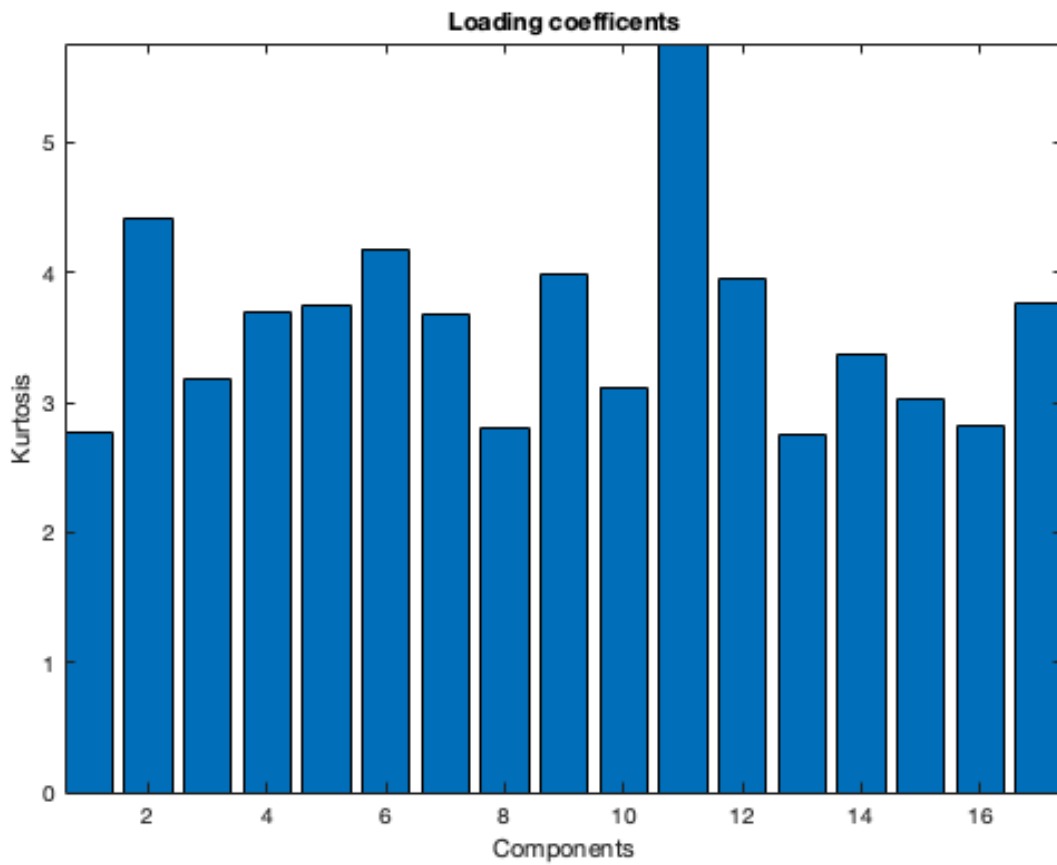
- **Percent variance** - Percent variance is reported for each component.

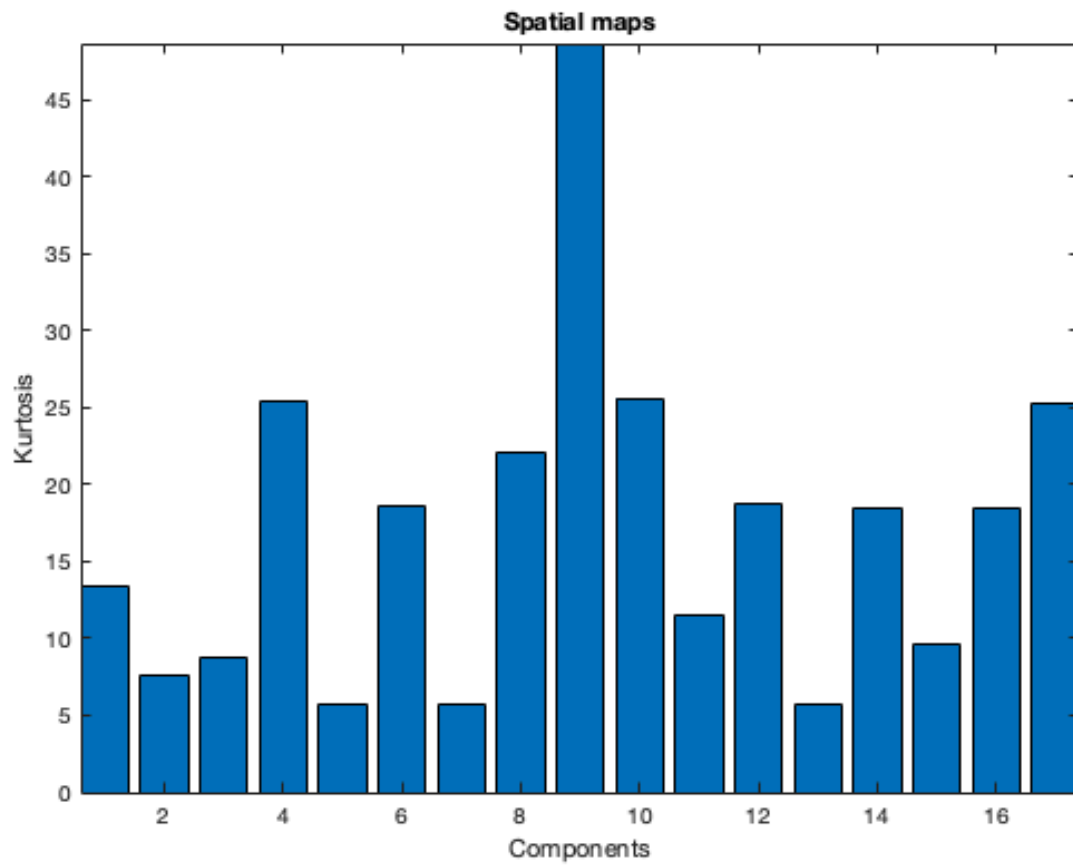
<i>ComponentNumber</i>	<i>PercentVariance</i>
_____	_____
1	5.4728
2	4.8722
3	7.5466
4	-0.22871
5	0.12599
6	5.5897
7	14.903
8	6.672
9	2.7414
10	0.74298
11	2.0388
12	5.0632
13	0.31025
14	8.5808
15	1.6487
16	10.155
17	3.4598

Kurtosis of loading coefficients and spatial maps

<i>ComponentNumber</i>	<i>Timecourses</i>	<i>SpatialMaps</i>
_____	_____	_____
1	2.7773	13.422
2	4.4152	7.5375
3	3.1827	8.759
4	3.6941	25.341
5	3.7417	5.7856
6	4.1823	18.611
7	3.6743	5.6964

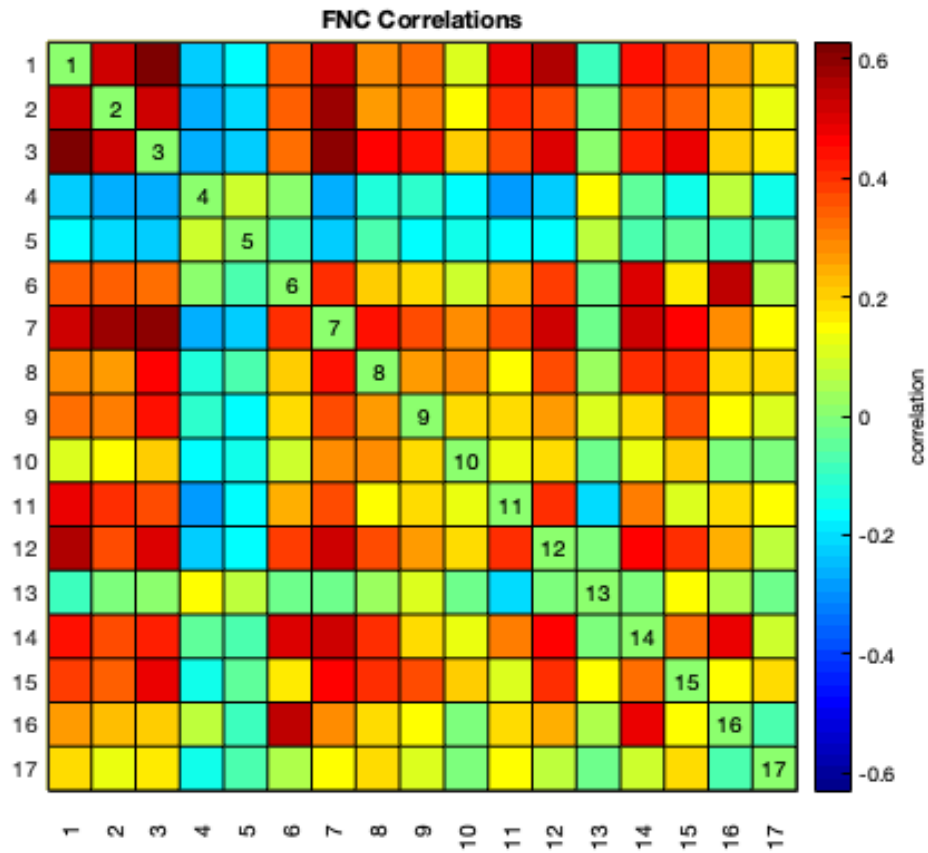
8	2.7953	22.143
9	3.9902	48.646
10	3.1202	25.61
11	5.7615	11.538
12	3.9441	18.698
13	2.7457	5.6917
14	3.3774	18.398
15	3.0209	9.5933
16	2.8211	18.479
17	3.7604	25.302





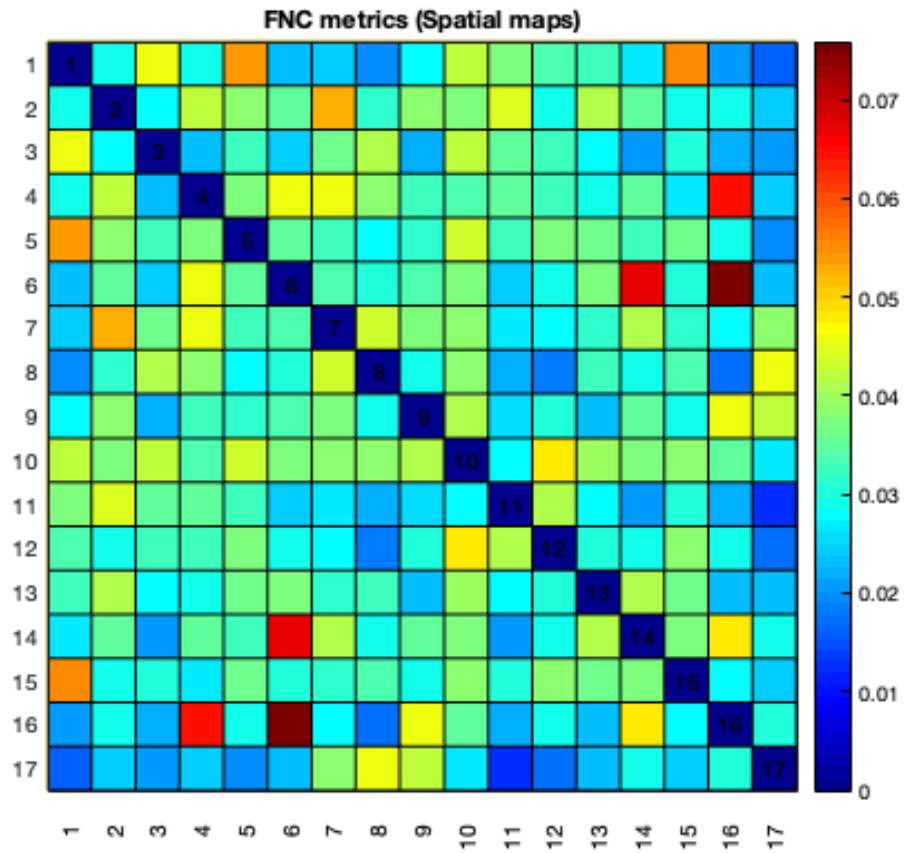
FNC correlations of subject loadings

Functional network connectivity correlations



FNC metrics of component spatial maps

Mutual information is computed between components spatially



Published with MATLAB® R2023a