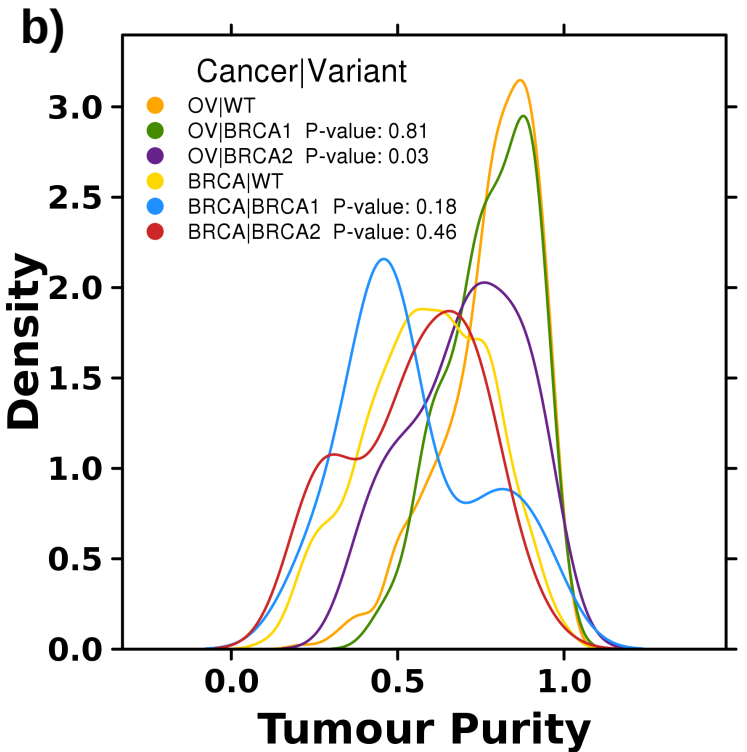
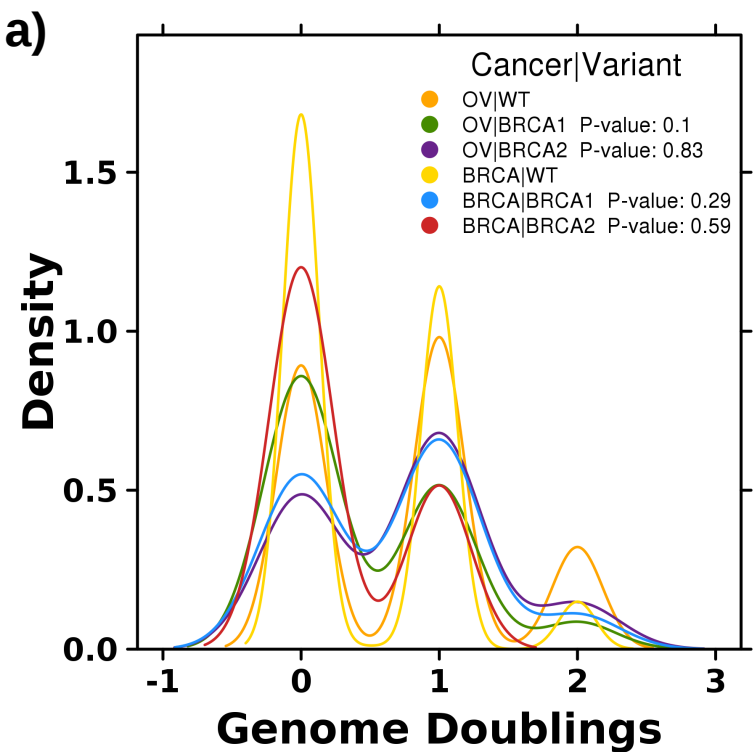
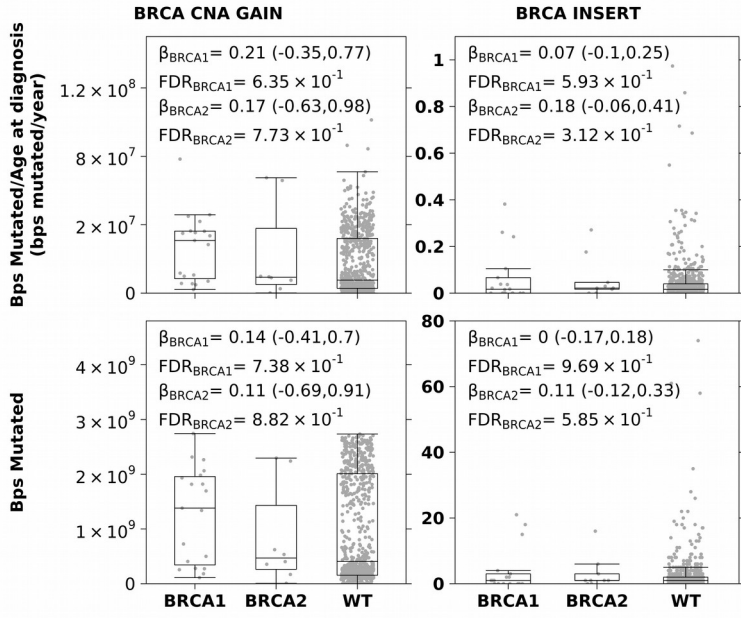


# Supplementary Figure 1

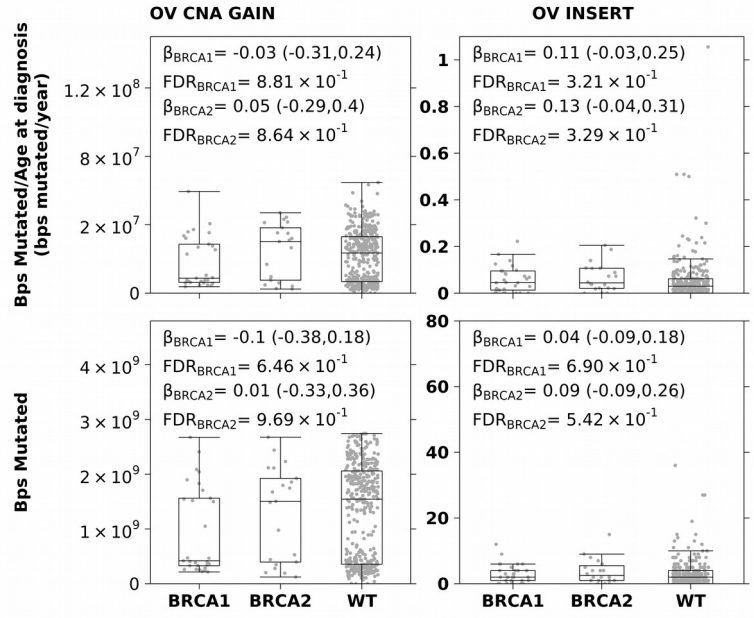


# Supplementary Figure 2

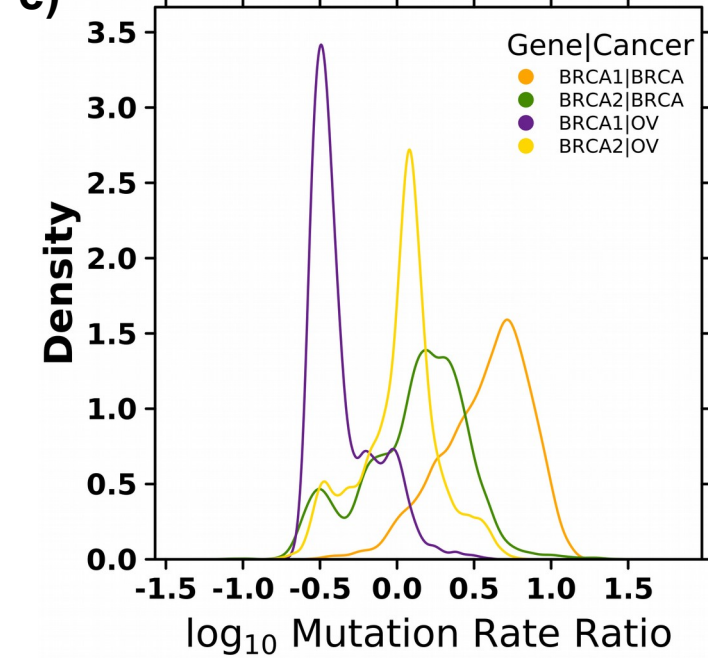
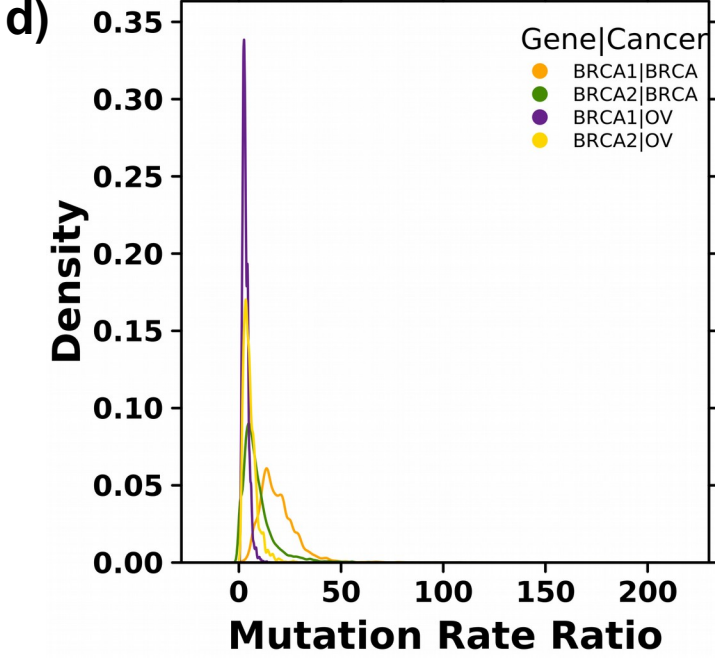
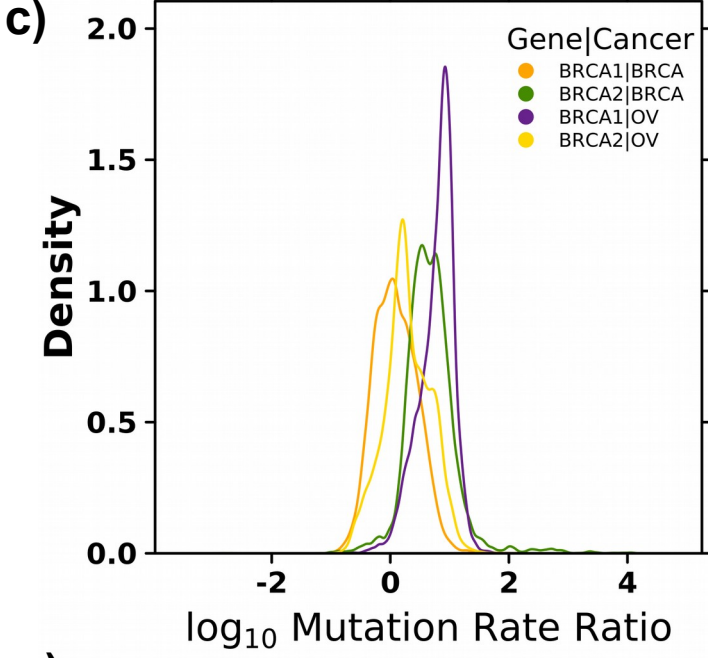
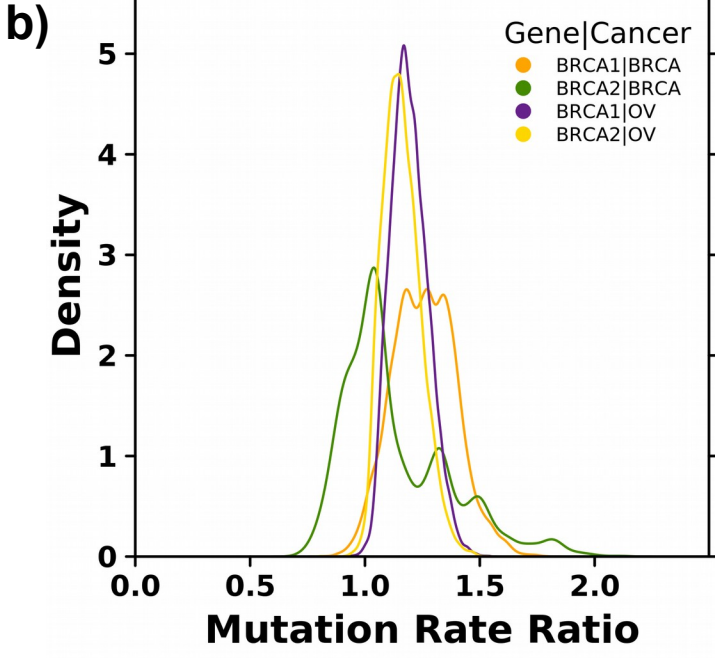
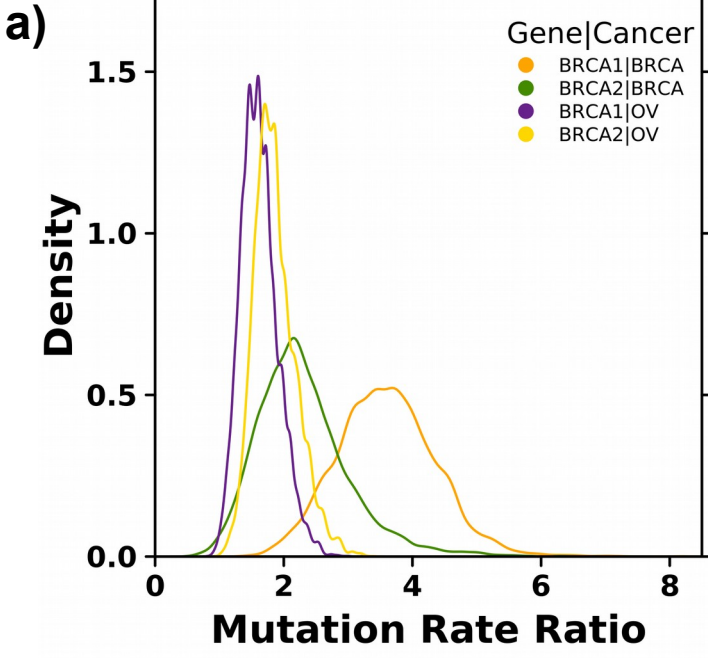
a)



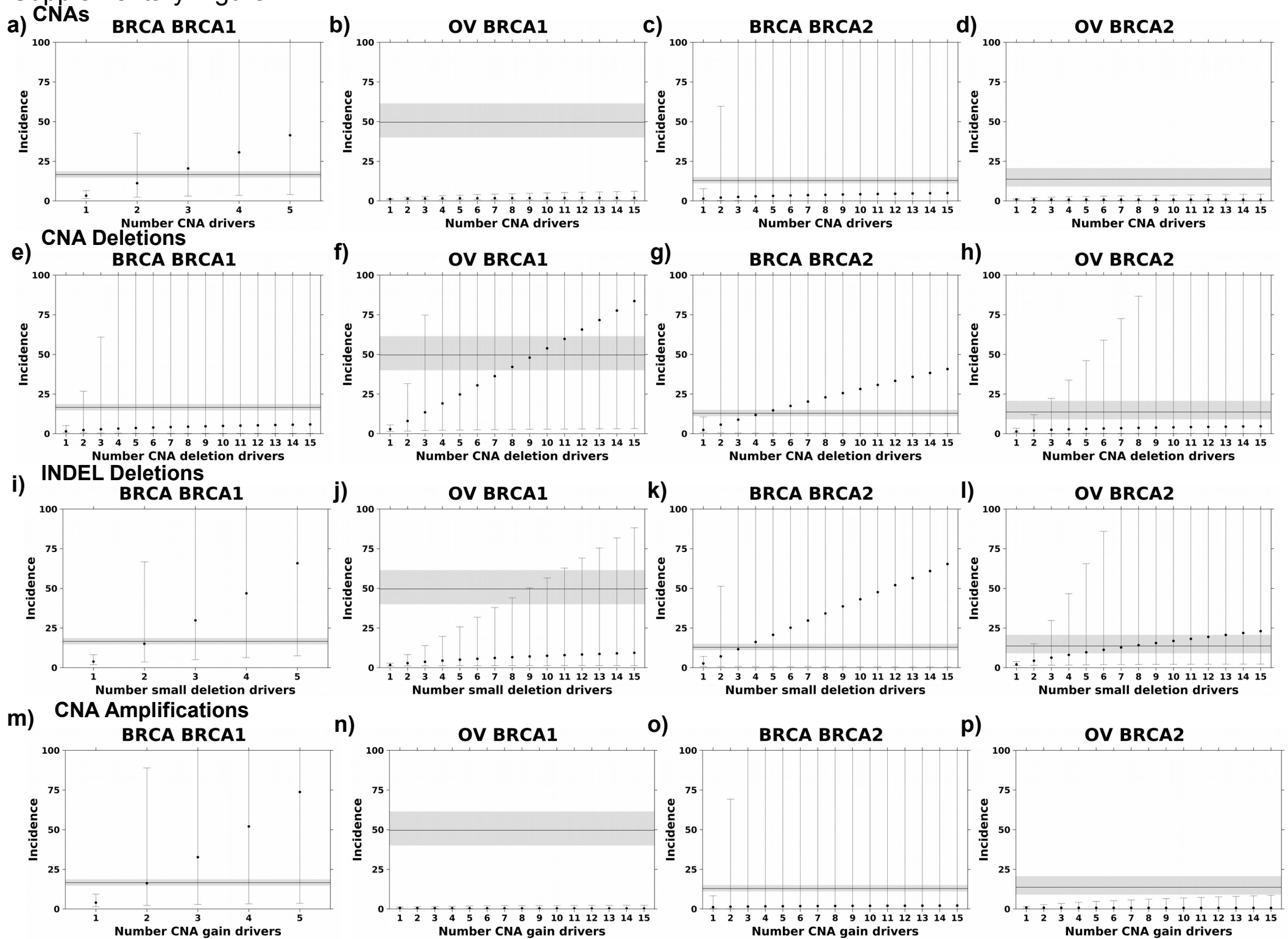
b)



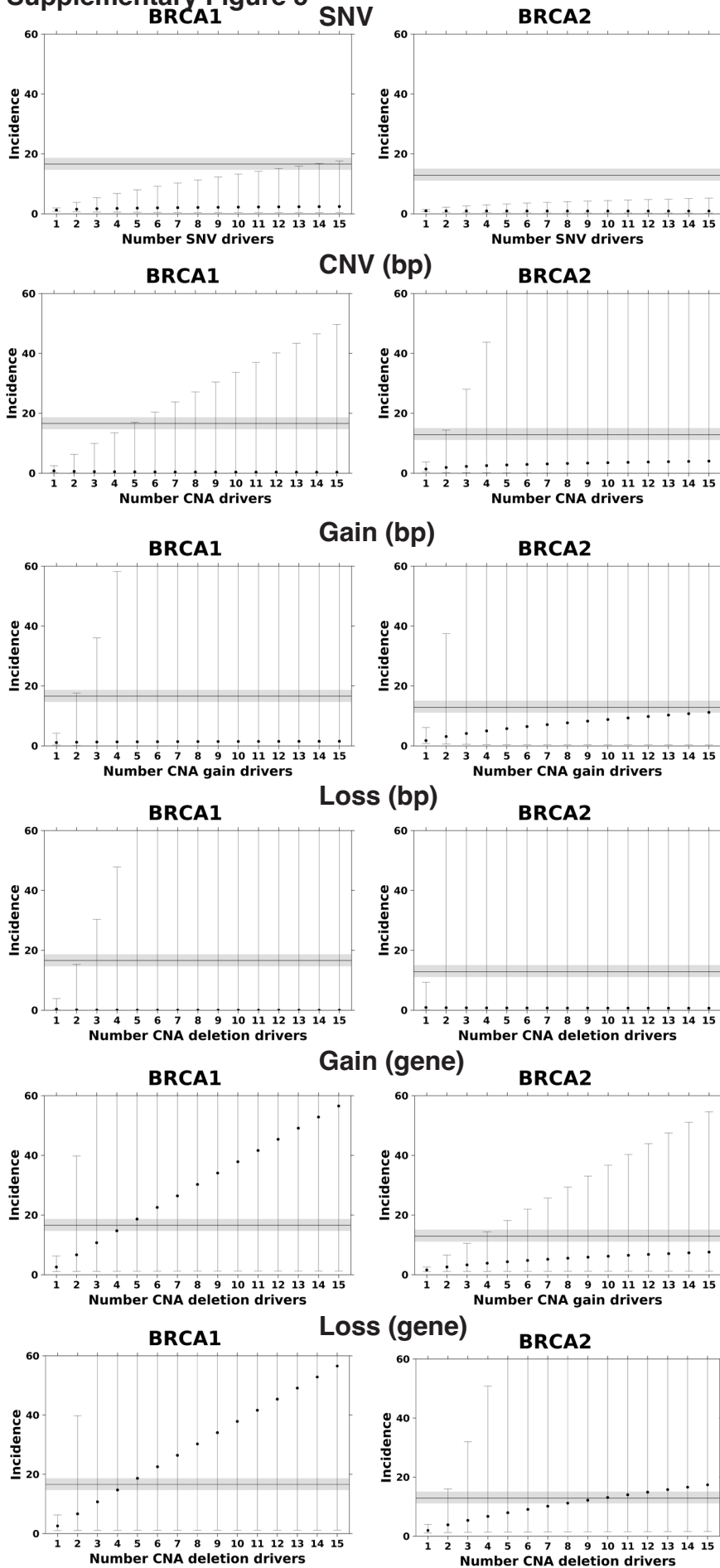
# Supplementary Figure 3



# Supplementary Figure 4

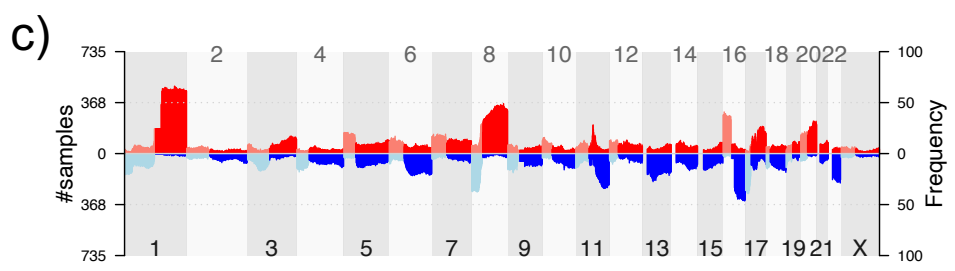
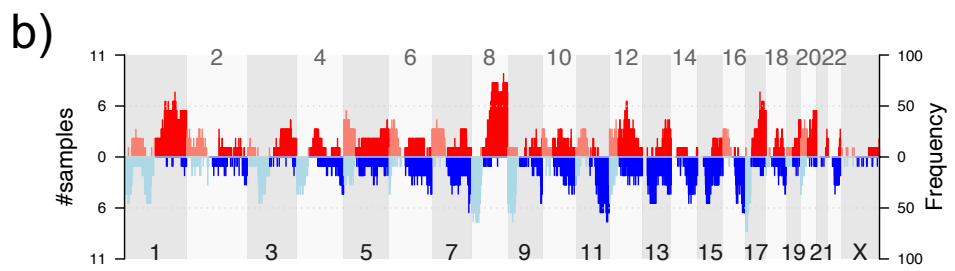
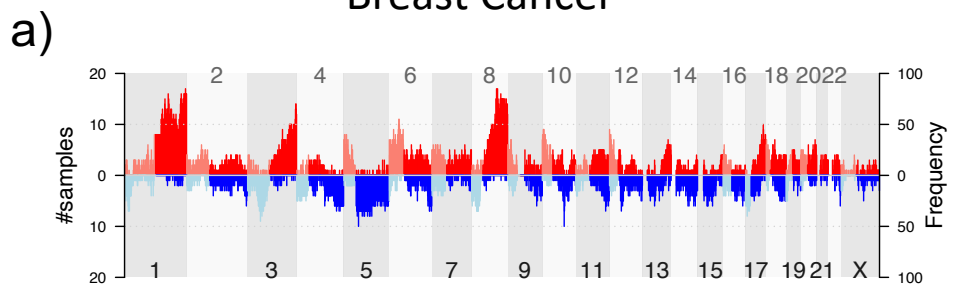


# Supplementary Figure 5

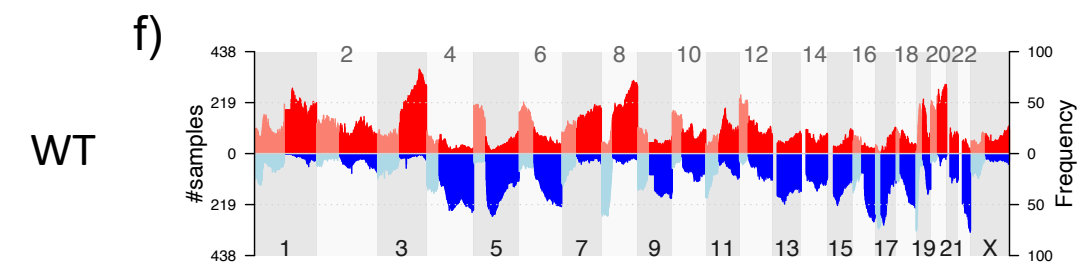
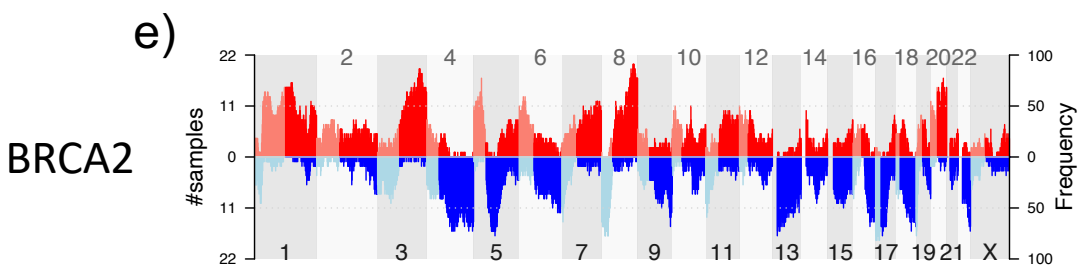
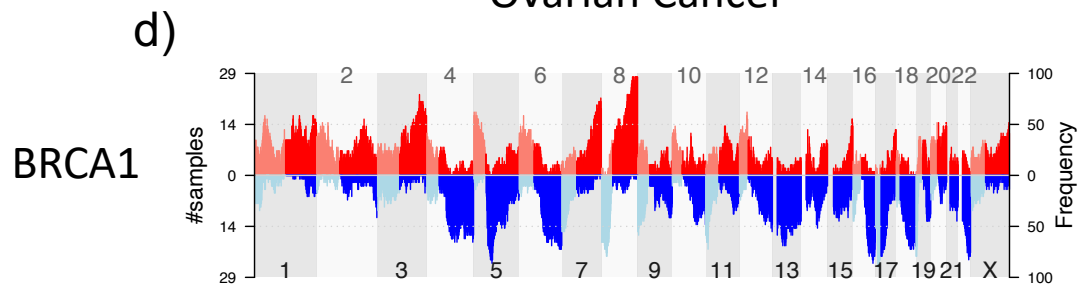


# Supplementary Figure 6

## Breast Cancer

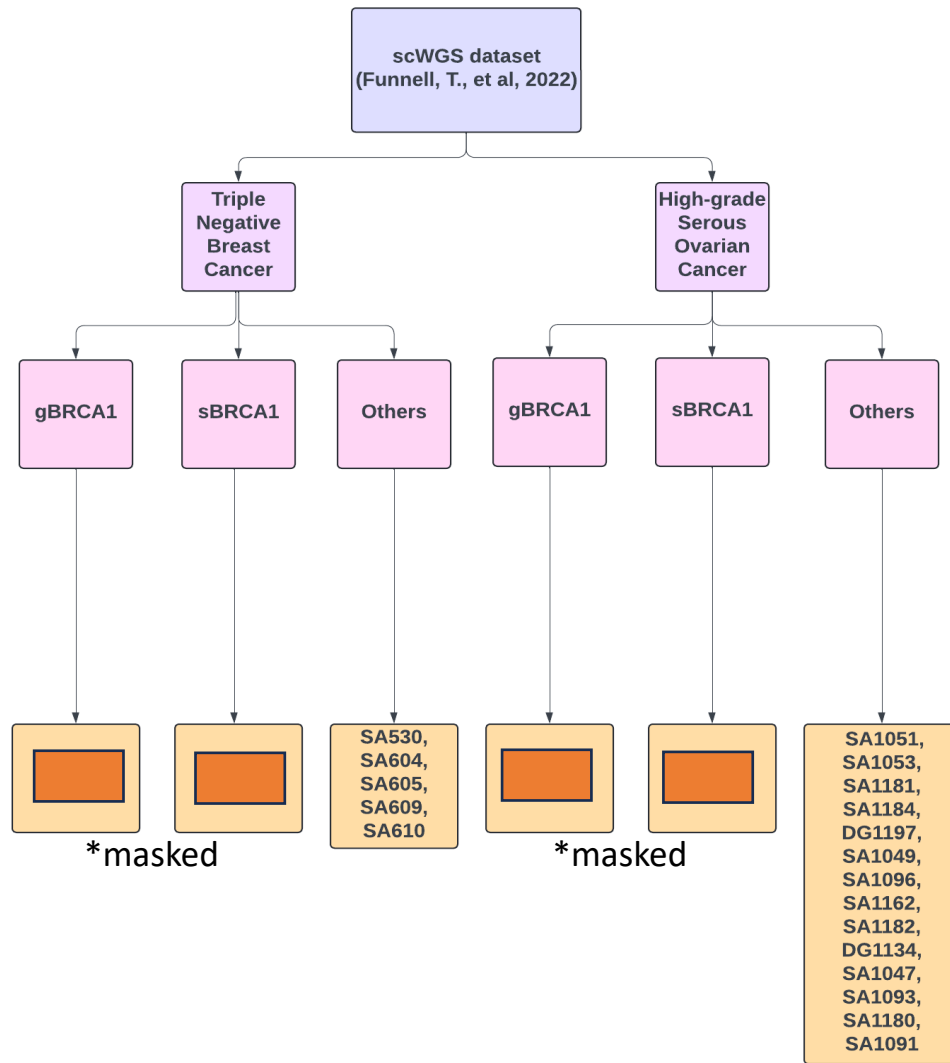


## Ovarian Cancer

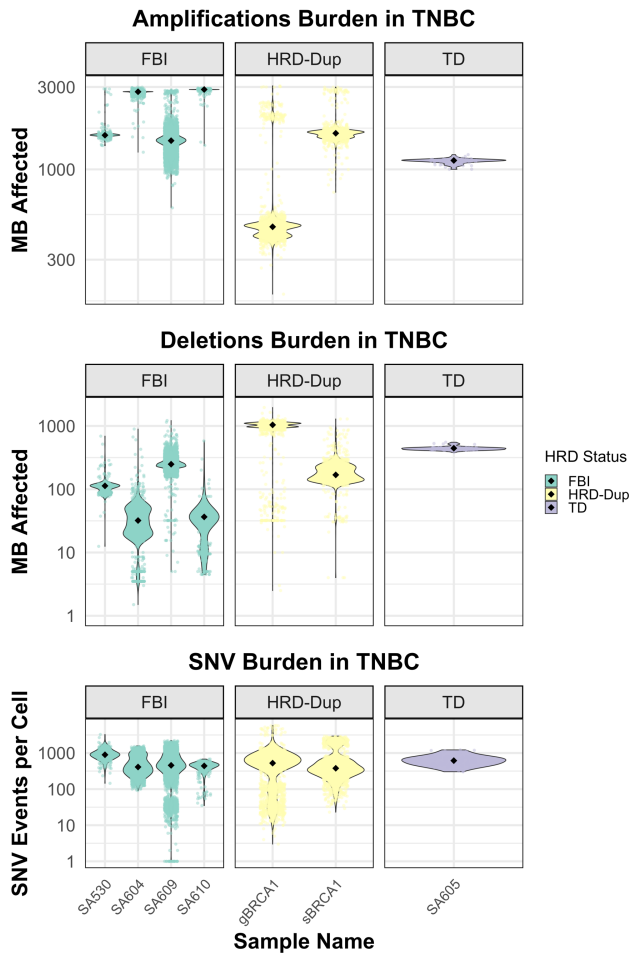


# Supplementary figure 7

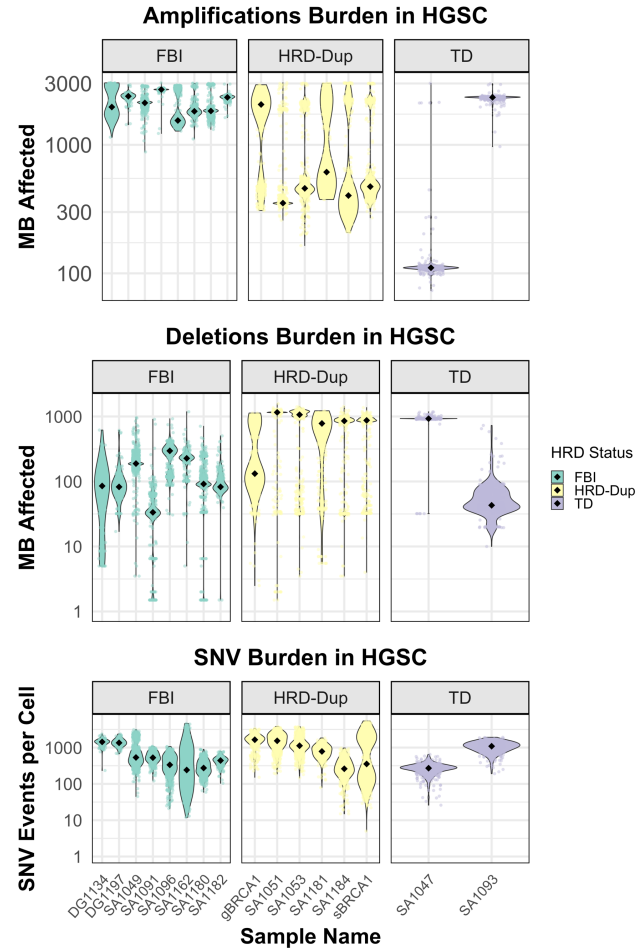
a



b

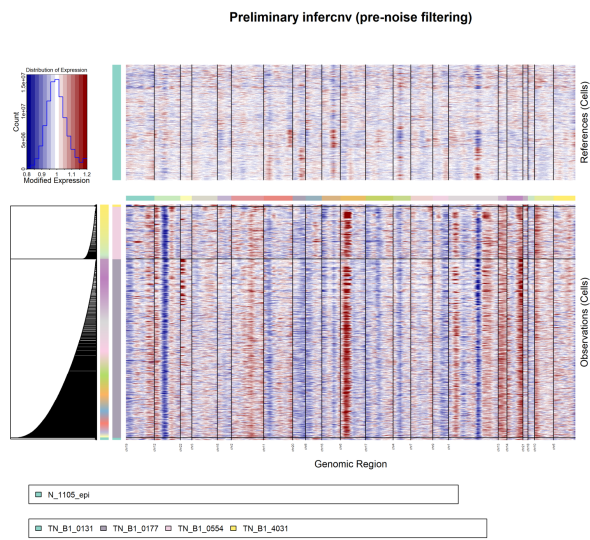


c

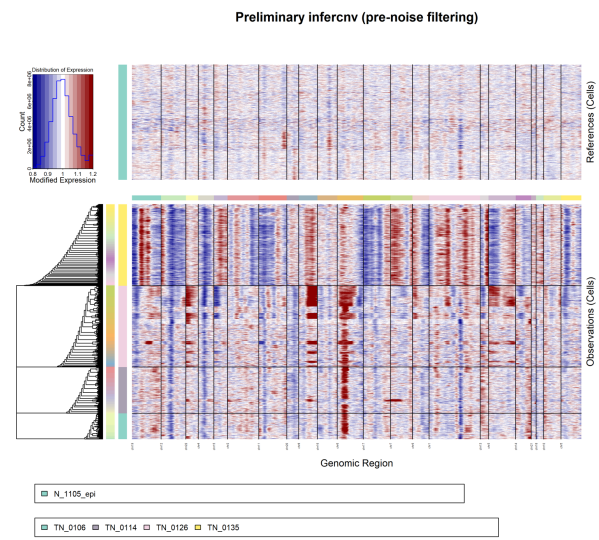


# Supplementary figure 8

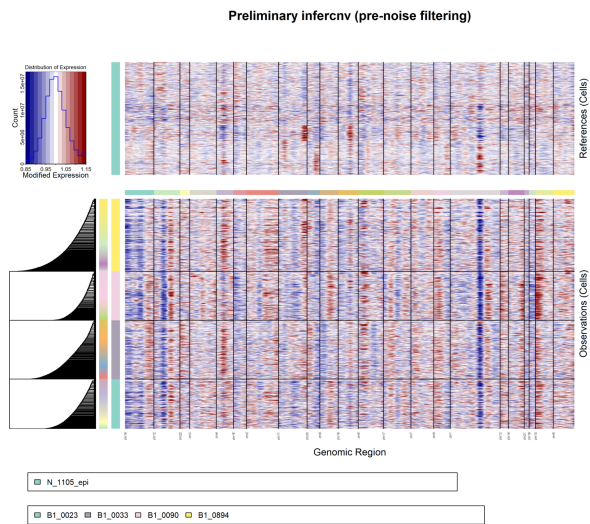
a. inferCNV heatmap of BRCA1 TNBC Samples (Normal Epithelial Reference)



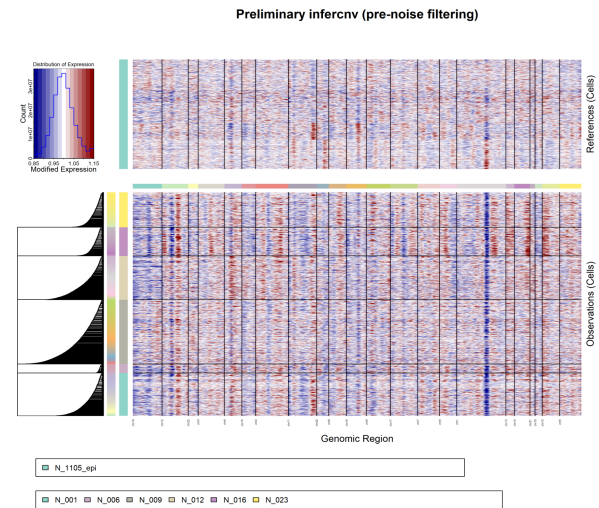
b. inferCNV heatmap of non-BRCA1 TNBC Samples (Normal Epithelial Reference)



c. inferCNV heatmap of BRCA1+/- Preneoplastic Normal Breast Tissue (Normal Epithelial Reference)



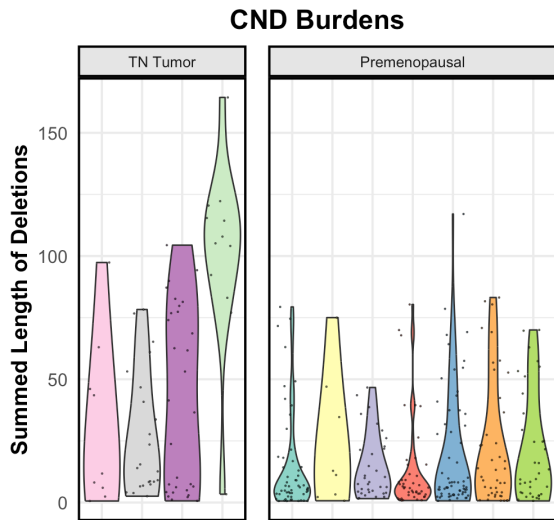
d. inferCNV heatmap of non-BRCA1 Premenopausal Normal Breast Tissue (Normal Epithelial Reference)



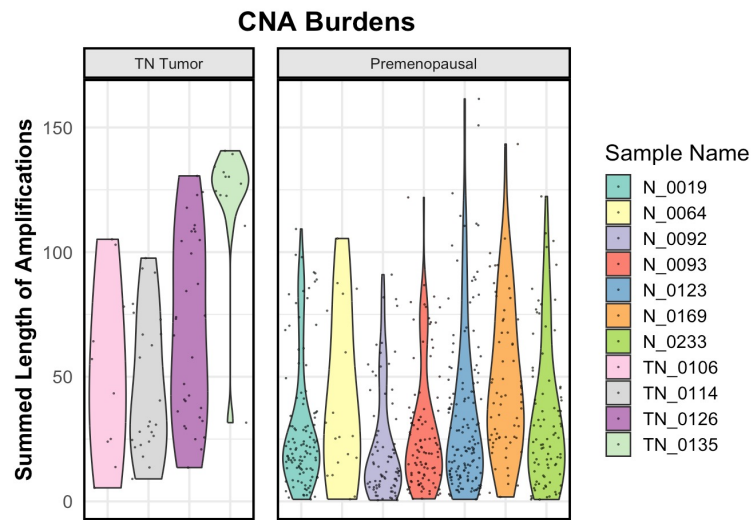


# Supplementary figure 9

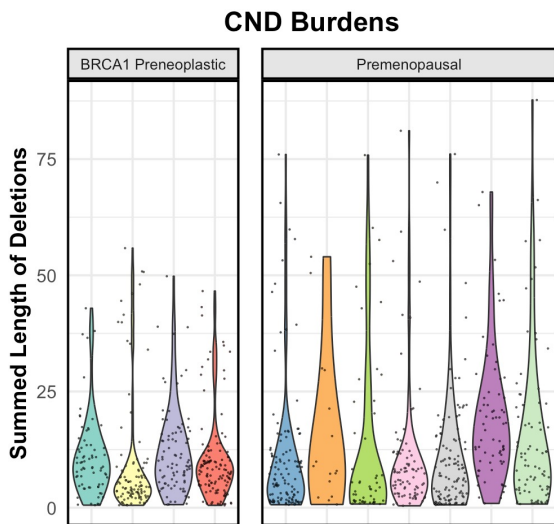
a. CND Length of non-BRCA1 TNBCs & non-BRCA1 Premenopausal Normal Breast Tissue



b. CNA Length of non-BRCA1 TNBCs & non-BRCA1 Premenopausal Normal Breast Tissue



c. CND Length of BRCA1+/- Preneoplastic Normal Breast Tissue & non-BRCA1 Premenopausal Normal Breast Tissue



d. CNA Length of BRCA1+/- Preneoplastic Normal Breast Tissue & non-BRCA1 Premenopausal Normal Breast Tissue

