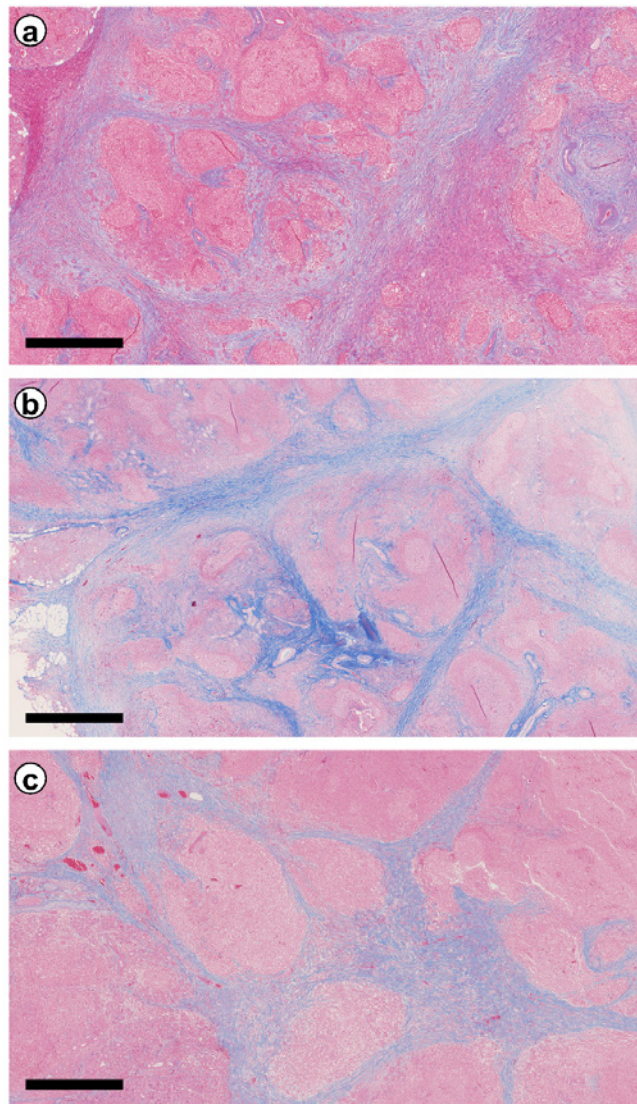
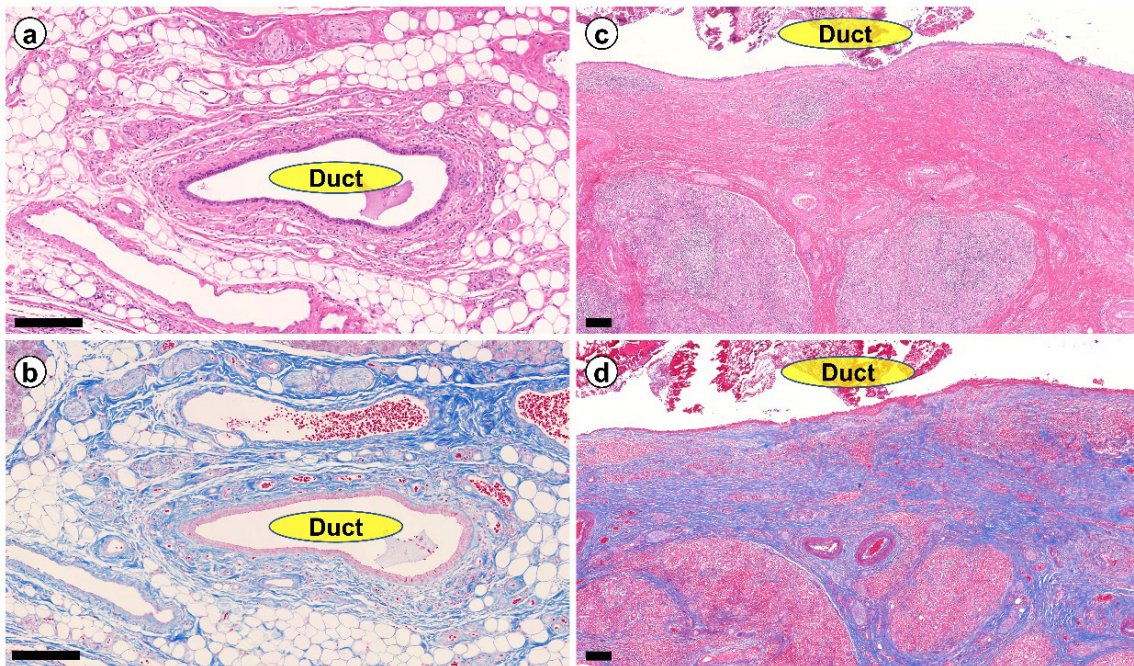


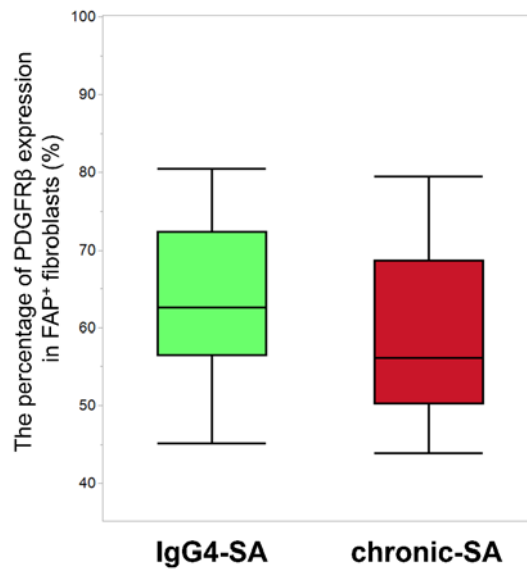
Supplementary Material



Supplementary Fig. 1. Fibrosis in IgG4-SA samples
a, b: Two cases of IgG4-SA group showed severe collagen deposition. *c:* One case showed moderate collagen deposition. Scale bars, 1 mm.



Supplementary Fig. 2. Fibrosis was localized around the dilated ducts in chronic-sialadenitis
a: The duct was not dilated in IgG4 sialadenitis (IgG4-SA). *b:* No collagen fiber development was observed around the duct in IgG4-SA. *c:* A part of the dilated duct in chronic sialadenitis (chronic-SA). Salivary stones were observed in the dilated duct. *d:* Collagen fibers developed around the dilated duct in chronic-SA. Scale bars, 200 μm .



Supplementary Fig. 3. The platelet-derived growth factor β receptor expression ratio in FAP $^+$ fibroblasts
 The platelet-derived growth factor β receptor (PDGFR β) expression rate of FAP-positive cells examined by multiplex immunofluorescence of the IgG4 sialadenitis (IgG4-SA) group was not significantly different from that of the chronic sialadenitis (chronic-SA) group.