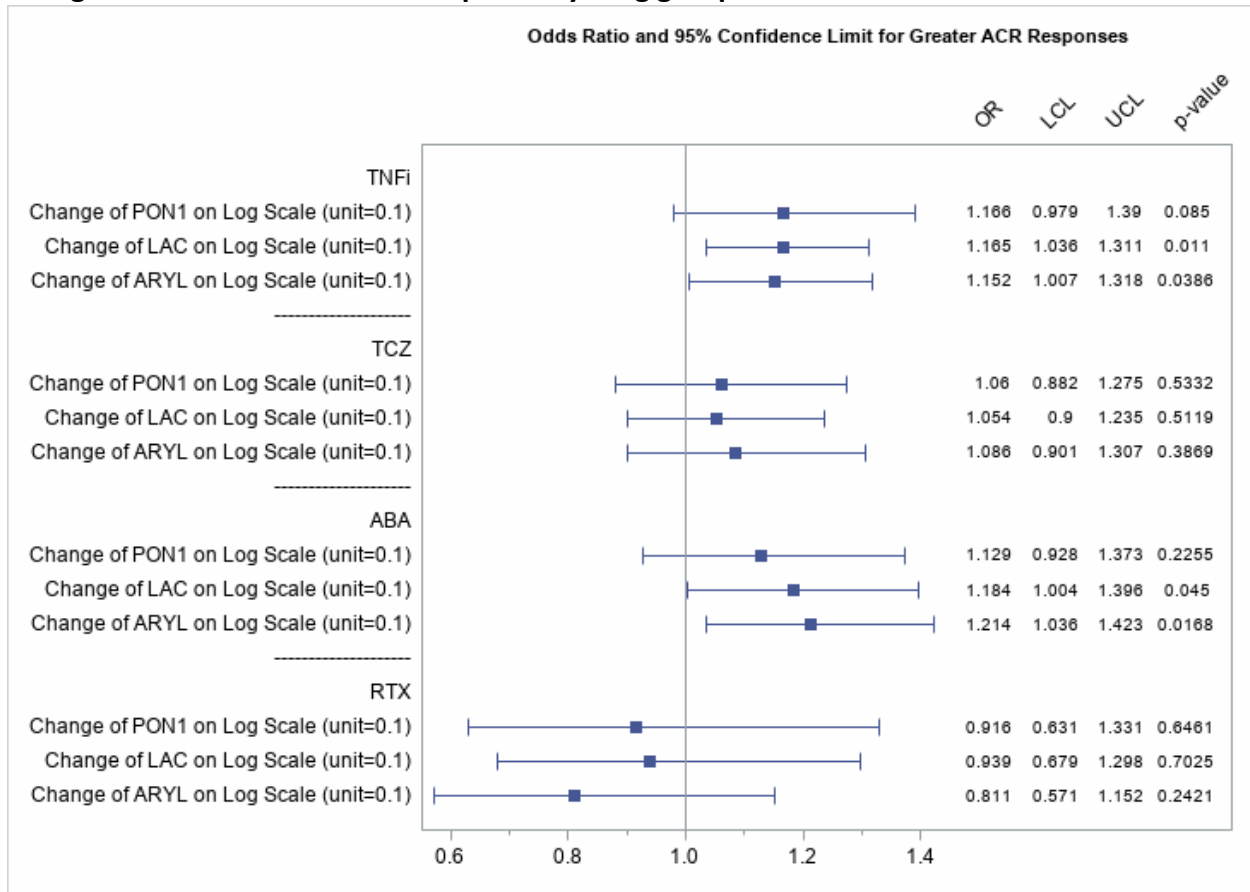


**Supplemental Figure 1. Multivariable ordinal logistic regression analysis of associations of change in PON1 with ACR-Max response by drug group.**



Model is an ordinal logistic regression for the effect of changes in PON1 activity on a composite ACR 20/50/70 response (0=non-responder, 1=ACR20 responder, 2=ACR50 responder, 3=ACR70 responder) adjusted for BMI, seropositivity, and disease duration (not shown).

PON1 values are difference in  $\log_{10}X$  from 0 to 6 months. Units are  $\text{Log}(\text{U/mL})$ .

PON1=paraoxonase; LAC=lactonase; ARYL=arylesterase; BMI=body mass index; TNFi=tumor necrosis factor inhibitor; TCZ=tocilizumab; ABA=abatacept; RTX=rituximab; OR=odds ratio; LCL=lower confidence interval (5%); UCL=upper confidence interval (95%)