

Supplementary Appendix

Efficacy and Tolerance of Brexucabtagene Autoleucel in Adults with Relapsed/Refractory B-cell Precursor Acute Lymphoblastic Leukemia: A GRAALL study from the DESCAR-T registry.

F. Rabian et al.

Table S1. List of drugs used as bridging therapy

Drug	Number of patients
Vincristine	32
Steroids	26
Methotrexate	20
Cyclophosphamide	18
Cytarabine	15
Anthracycline	13
Etoposide	9
6-mercaptopurine	8
Asparaginase	8
Venetoclax	8
Tyrosine kinase inhibitor	6
Other	4
Clofarabine	2
Azacitidine	1
Immunotherapy	
Inotuzumab ozogamicin	5
Blinatumomab	3

Figure S1. Overall survival from leukapheresis according to brexucel infusion success

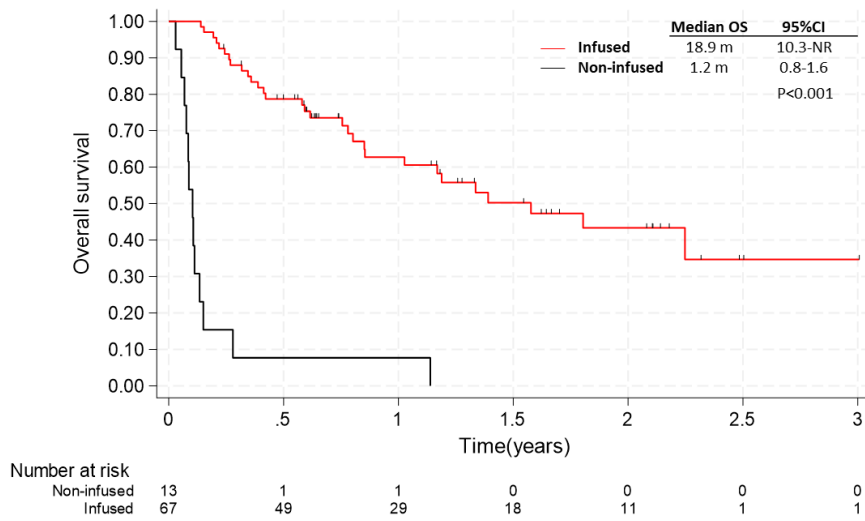


Figure S2. Cumulative incidence of failure (CIF) and of treatment-related mortality (TRM) according to prior HSCT (A,B) and time from HSCT to apheresis (C,D). CIF was defined as the time from infusion to brexu-cel failure or relapse considering TRM as a competitive event. TRM was defined as the time from infusion to death within the first month following brexu-cel infusion before evaluation or in continuous complete remission considering relapse as competing event. Subdistribution hazard ratios (SHR) from Fine-Gray model are given.

