

Supplemental Tables

Supplemental Table 1: Multivariate Analysis: All DLBCL patients

Supplemental Table 2: AutoHCT in DLBCL 0-12 months / > 12 months after diagnosis: Patient characteristics

Supplemental Table 3: Propensity-matched cohort analysis: Patient characteristics

Multivariate analysis: All patients

		PFS (n = 4809)		OS (n = 5415)		RI (n = 4812)		NRM (n = 4812)	
		HR (95% CI)	p-value	HR (95% CI)	p-value	HR (95% CI)	p-value	HR (95% CI)	p-value
Lymphoma subtype	DLBCL	1		1		1		1	
	THRLBCL	0.58 (0.41-0.82)	<i>0,002</i>	0.78 (0.54-1.12)	0,18	0.46 (0.31-0.7)	<i><0.001</i>	1.39 (0.73-2.67)	0,32
Sex patients	Male	1		1		1		1	
	Female	0.99 (0.9-1.09)	0,83	0.9 (0.8-1.01)	0,08	1.01 (0.91-1.12)	0,89	0.89 (0.68-1.15)	0,37
Age at HCT by 10 year		1.21 (1.15-1.26)	<i><0.001</i>	1.26 (1.2-1.33)	<i><0.001</i>	1.17 (1.12-1.23)	<i><0.001</i>	1.47 (1.29-1.68)	<i><0.001</i>
Disease status at HCT	CR	1		1		1		1	
	PR	1.44 (1.3-1.6)	<i><0.001</i>	1.46 (1.29-1.65)	<i><0.001</i>	1.52 (1.36-1.69)	<i><0.001</i>	1.06 (0.81-1.39)	0,67
Delay Diagnosis to HCT	>12 months	1		1		1		1	
	12 months	0.89 (0.8-0.99)	<i>0,04</i>	0.91 (0.8-1.03)	0,15	0.91 (0.81-1.02)	0,1	0.81 (0.61-1.07)	0,14
Karnofsky-Index	< 90	1		1		1		1	
	>= 90	0.81 (0.73-0.9)	<i><0.001</i>	0.72 (0.63-0.82)	<i><0.001</i>	0.85 (0.75-0.96)	<i>0,007</i>	0.64 (0.49-0.84)	<i><0.001</i>
Number of lines	2	1		1		1		1	
	>2	1.28 (1.15-1.43)	<i><0.001</i>	1.22 (1.08-1.39)	<i>0,002</i>	1.32 (1.17-1.48)	<i><0.001</i>	1.07 (0.8-1.43)	0,65

Abbreviations: THRLBCL: T-cell/histiocyte-rich large cell B-cell lymphoma, DLBCL: Diffuse large B-cell lymphoma, HCT: Hematopoietic Stem cell Transplantation, IPI: International Prognostic Index, CR: Complete remission, PR: Partial remission, HR: Hazard ratio, CI: Confidence Interval

Supplemental Table 2

Patient characteristics:
DLCBCL autoHCT
0-12 months / >12 months after diagnosis

		0-12 months N = 3533	>12 months N = 1913	<i>P-value</i>
Age patients	median (range)	59.8 (18.3-81.1)	56.3 (18.1-81.2)	< 0.0001
Sex Patients	Female	1412 (40)	762 (39.8)	0.9236
	Male	2121 (60)	1151 (60.2)	
Karnofsky Index	< 90	930 (28.3)	520 (29.3)	0.411
	>= 90	2362 (71.7)	1252 (70.7)	
	missing	241	141	
HCT Comorbidity Index	0	1936 (62.5)	1097 (65.8)	0.0607
	1 - 2	669 (21.6)	336 (20.2)	
	3 or more	493 (15.9)	233 (14)	
	missing	435	247	
Transformed disease	No	3110 (92.2)	1443 (77.7)	< 0.0001
	Yes	262 (7.8)	413 (22.3)	
	missing	161	57	
International Prognostic index (Score points)	Low risk (0-1)	449 (21.4)	185 (15.4)	< 0.0001
	Low-inter. risk (2)	567 (27)	308 (25.6)	
	High-inter. risk (3)	638 (30.3)	365 (30.3)	
	High risk (4 or 5)	449 (21.4)	346 (28.7)	
	missing	1430	709	
Number of lines	2	2596 (73.5)	1376 (71.9)	0.2192
	3 or more	937 (26.5)	537 (28.1)	
Disease status at HCT	CR	2258 (63.9)	944 (49.3)	< 0.0001
	PR	1275 (36.1)	969 (50.7)	

Abbreviations: THRLBCL: T-cell/histiocyte-rich large cell B-cell lymphoma, DLBCL: Diffuse large B-cell lymphoma, HCT: Hematopoietic Stem cell Transplantation, CR: Complete remission, PR: Partial remission

Supplemental Table 3

Patient characteristics: Propensity score matched cohorts		THRLBCL	DLBCL	<i>P-value</i>
		N = 166	N = 332	
Age patients	median (range)	48.3 (19-73)	50.5 (18-77)	0.6115
Interval diagnosis to HCT	>12 months	108 (65)	207 (62)	0.5542
	0-12 months	58 (35)	125 (38)	
Sex Patients	Female	31 (19)	59 (18)	0.8049
	Male	135 (81)	273 (82)	
Karnofsky Index	< 90	29 (18)	56 (17)	0.8662
	>= 90	137 (83)	276 (83)	
HCT Comorbidity Index	0	117 (71)	227 (68)	0.8859
	1 - 2	28 (17)	59 (18)	
	3 or more	21 (13)	46 (14)	
Transformed disease	No	147 (91)	286 (89)	0.3515
	Yes	14 (9)	37 (12)	
	missing	5	9	
International Prognostic index (Score points)	Low risk (0-1)	16 (15)	47 (23)	0.0532
	Low-inter. risk (2)	33 (31)	63 (31)	
	High-inter. risk (3)	36 (34)	43 (21)	
	High risk (4 -5)	21 (20)	52 (25)	
	missing	60	127	
Treatment lines pre HCT	2 or more	166 (100)	332 (100)	Not done
Disease status at HCT	CR	105 (63)	230 (70)	0.1768
	PR	61 (37)	102 (31)	

Abbreviations: THRLBCL: T-cell/histiocyte-rich large cell B-cell lymphoma, DLBCL: Diffuse large B-cell lymphoma, HCT: Hematopoietic Stem cell Transplantation, CR: Complete remission, PR: Partial remission

Supplemental Figures

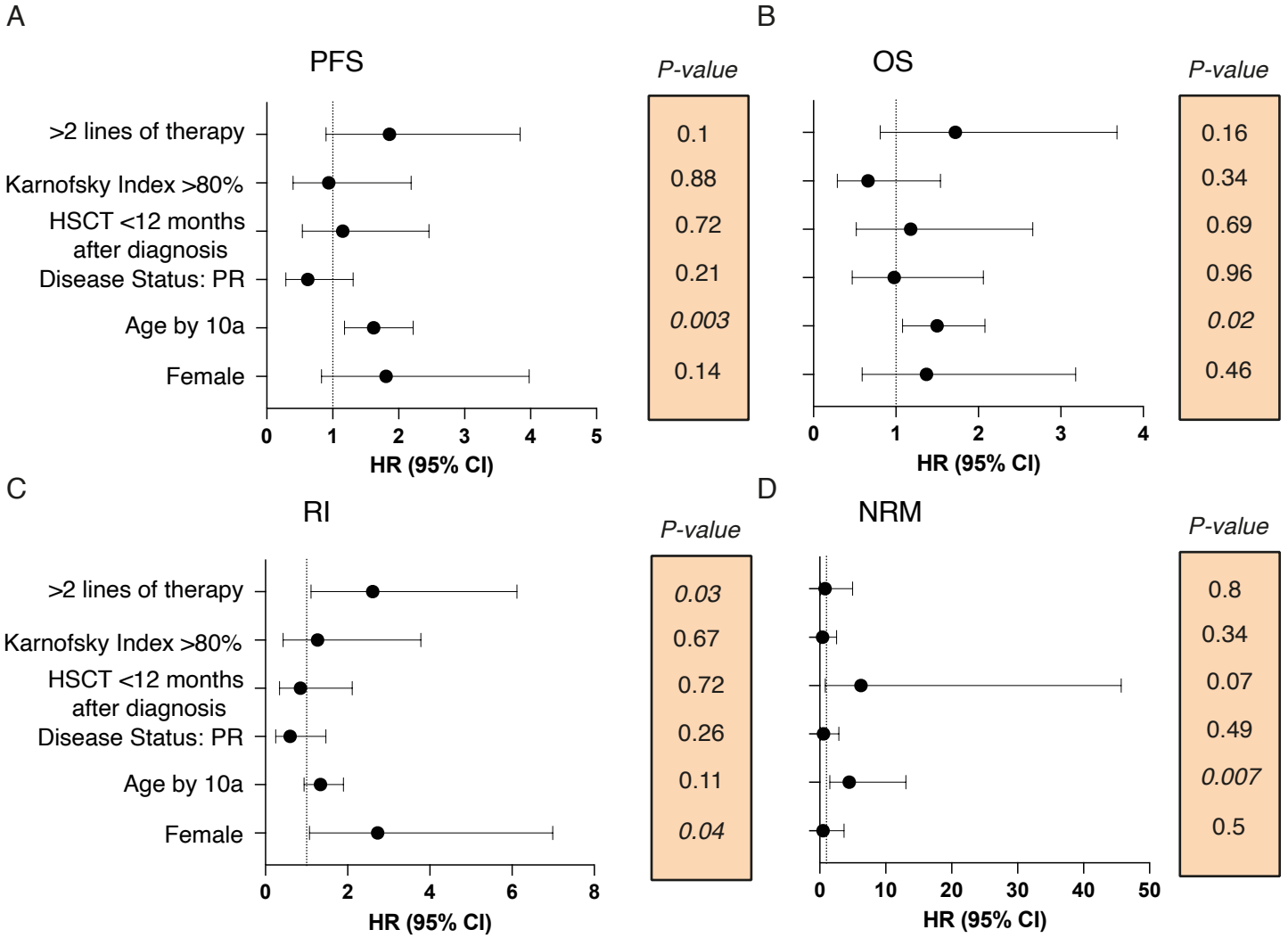
Supplemental Figure 1: Prognostic factors for THRLBCL after autoHCT

Hazard ratios with 95% Confidence intervals from multivariable regression using a Cox proportional hazards model of 5 independent variables assessed for prediction of **a)** PFS, **b)** OS, **c)** RI, **d)** NRM within THRLBCL patients undergoing autoHCT.

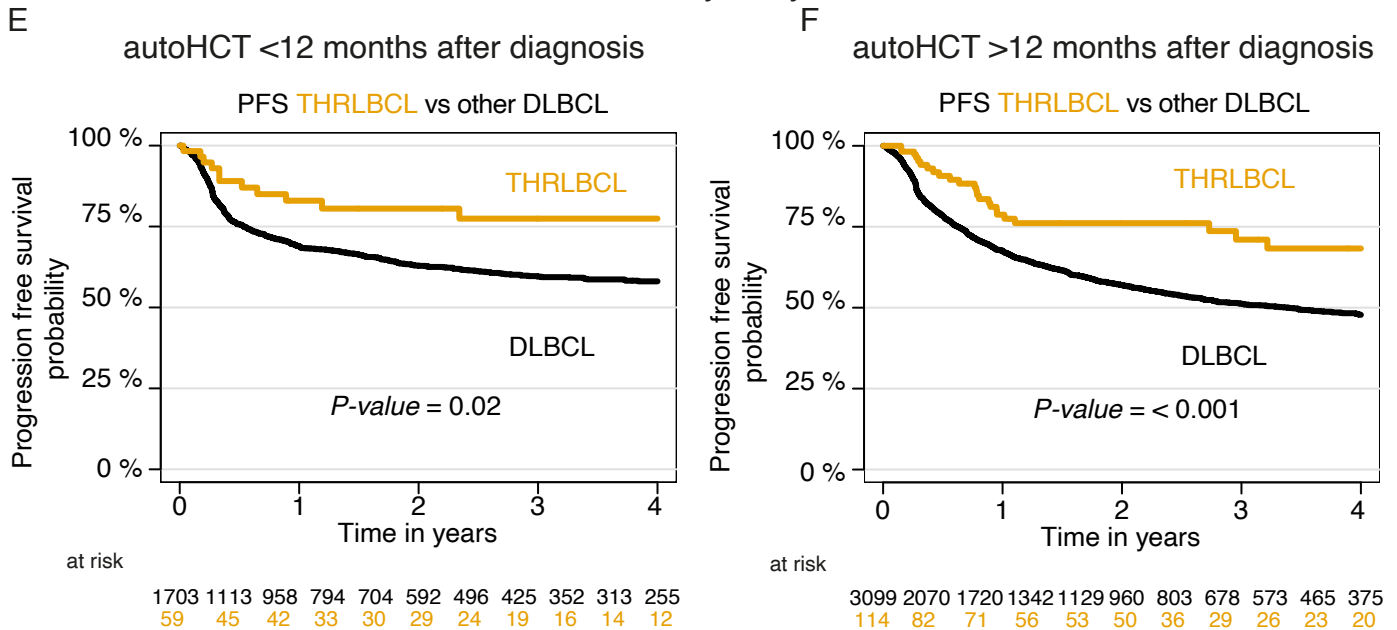
Kaplan-Meier curves from other DLBCL and THRLBCL patients depicting **e)** PFS of patients undergoing autoHCT within <12 months or, **f)** >12 months after diagnosis.

Supplemental Figure 1

Multivariate analysis of all THRLBCL patients



Outcomes by delay to auto HCT



Abbreviations: PFS: Progression free survival, OS: Overall survival, NRM: Non-Relapse mortality, RI: Relapse incidence, THRLBCL: T-cell/histiocyte-rich large cell B-cell lymphoma, DLBCL: Diffuse large B-cell lymphoma, HCT: Hematopoietic Stem cell Transplantation, HR: Hazard ratio, CI: Confidence Interval