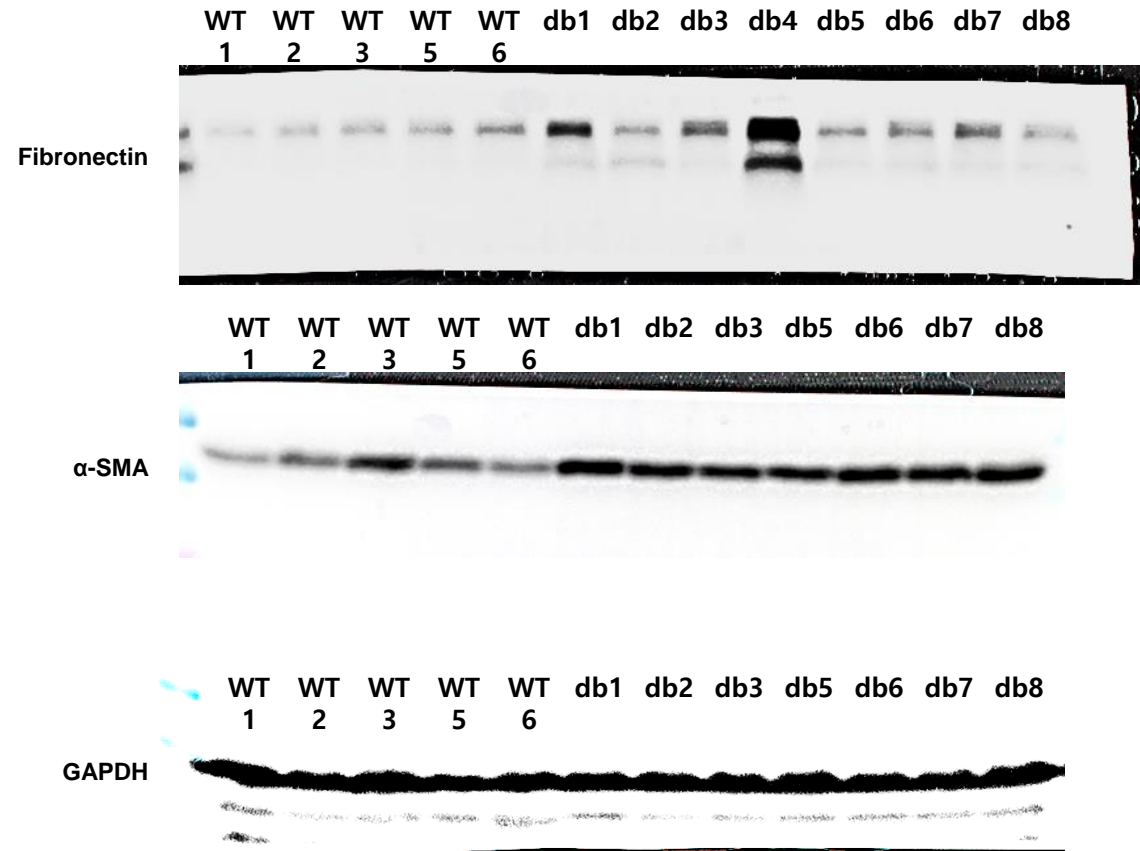
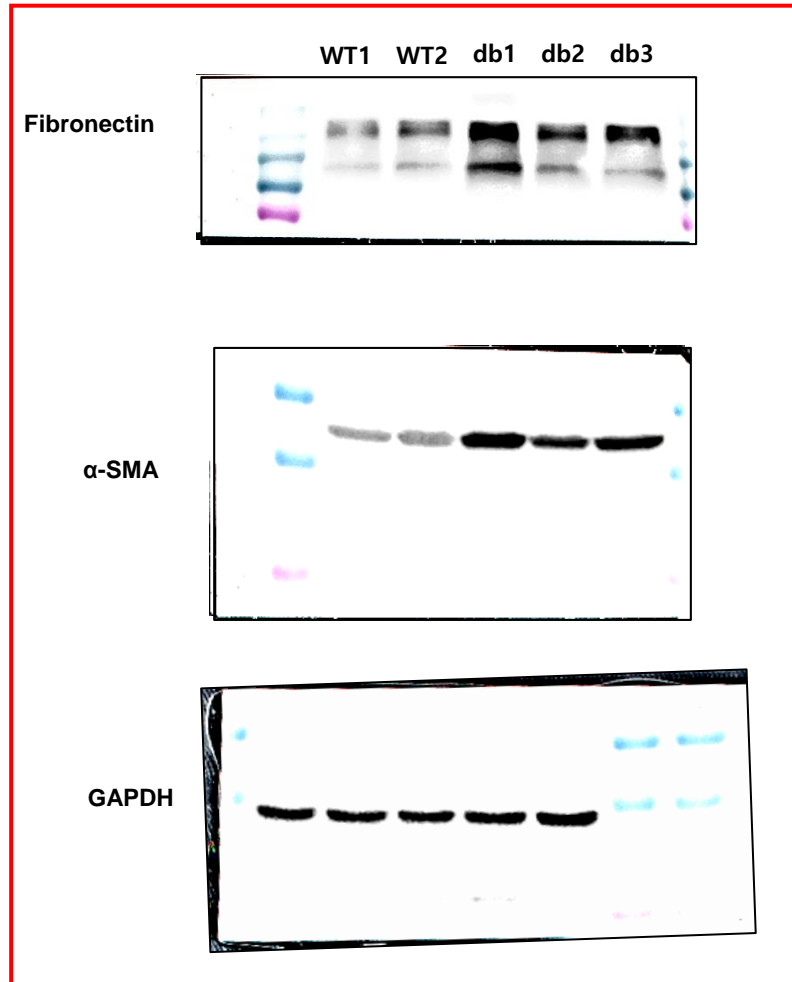


**C**

**Figure 2.** High glucose serum levels induced the progression of fibrosis in diabetic kidney tissue. (C) Fibronectin and α-SMA protein levels in db/db 20-week-old mice were determined by Western blot. n = 4–6 each group. (F) Fibronectin and α-SMA protein levels in STZ-induced diabetic models were determined by Western blot. n = 4–6 each group.

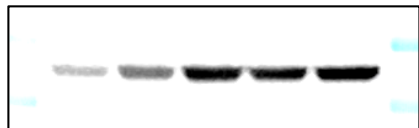
**F****STZ 8weeks**

WT 1 WT 2 STZ 1 STZ 2 STZ 3

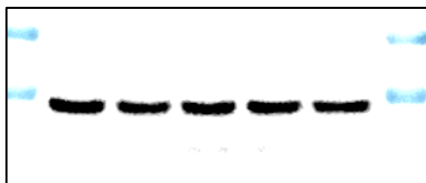
Fibronectin



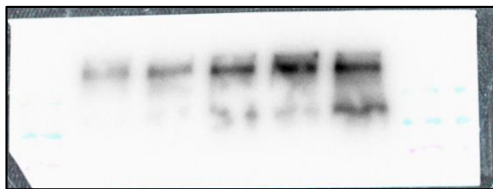
A-SMA



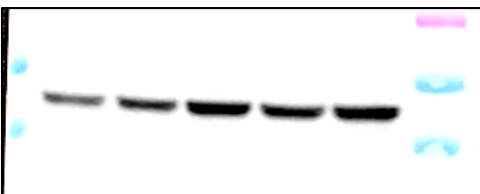
GAPDH



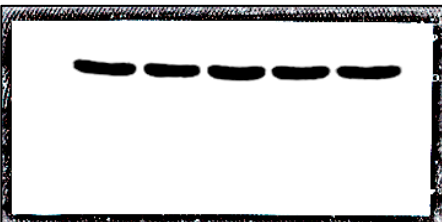
Fibronectin



A-SMA

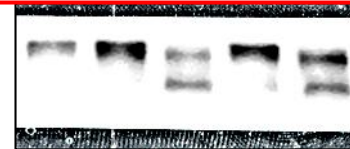


GAPDH

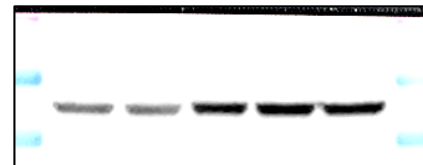
**STZ 12weeks**

WT 1 WT 2 STZ 1 STZ 2 STZ 3

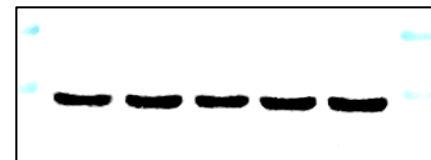
Fibronectin



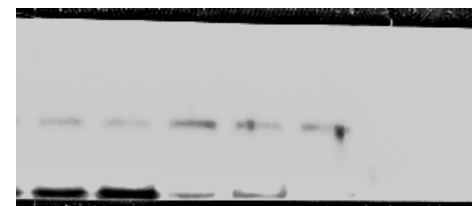
A-SMA



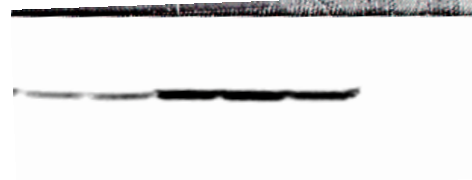
GAPDH



Fibronectin



A-SMA



GAPDH

