

## Uncropped Western Blot images

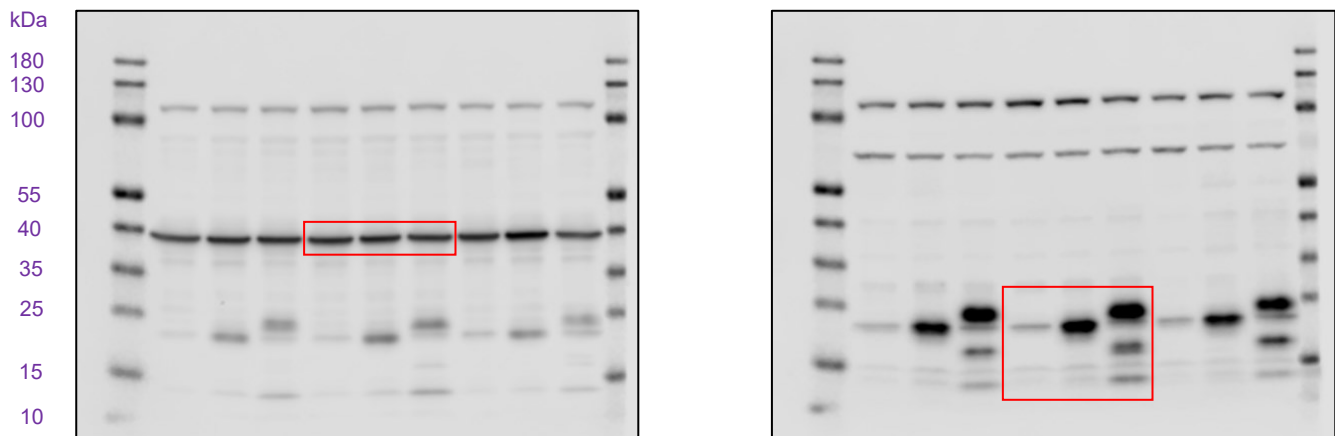
\* Blots that are placed next to each other show detections of different protein targets from the same gel.

\* The red rectangle indicates the part of the blot that is presented in the manuscript. The orange rectangle indicates the part that has been used only for quantifications.

### Main Figures:

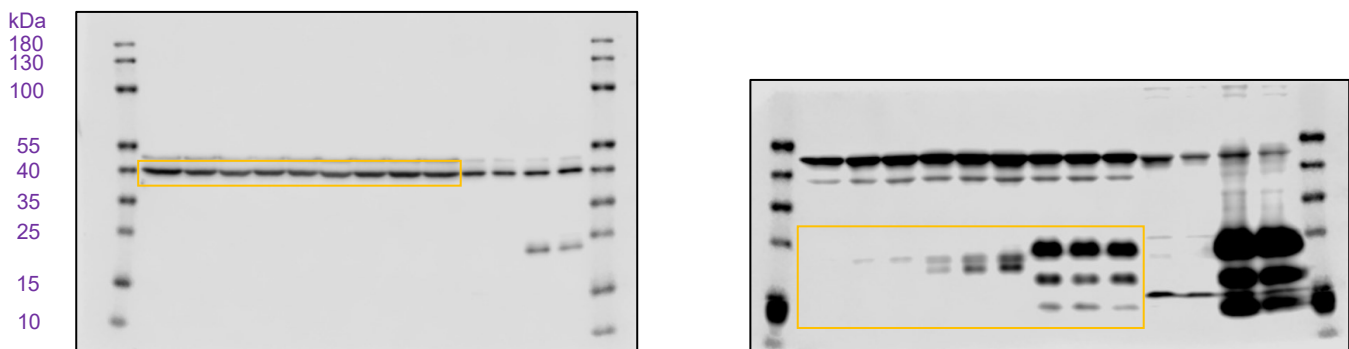
#### Full unedited gel for Fig.1 (D)

Left panel,  $\beta$ -actin (45 kDa) (1:10000, #4967, Cell Signaling). Right panel, VEGF-B (21 and 32 kDa) (1:1000, #AF590, R&D Systems).



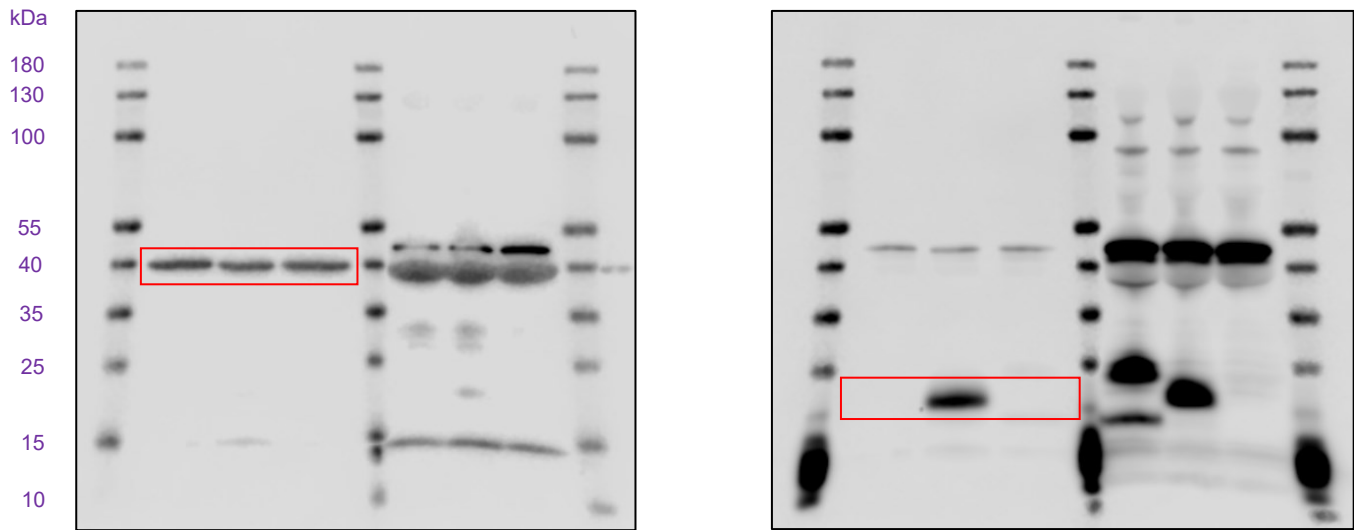
#### Full unedited gel for Fig.1 (D)

Left panel,  $\beta$ -actin (45 kDa) (1:10000, #4967, Cell Signaling). Right panel, VEGF-B (21 and 32 kDa) (1:1000, #AF590, R&D Systems).



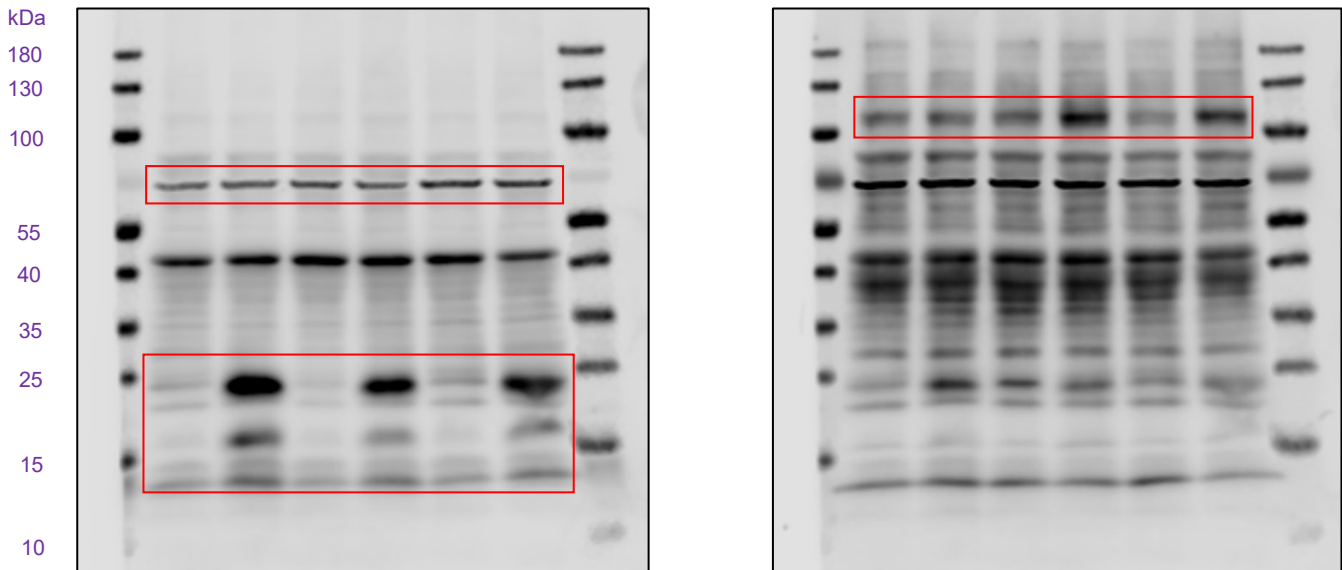
**Full unedited gel for Fig.1 (D)**

Left panel,  $\beta$ -actin (45 kDa) (1:10000, #4967, Cell Signaling). Right panel, VEGF-B (32 kDa) (1:1000, #AF590 + #AF751, R&D Systems).



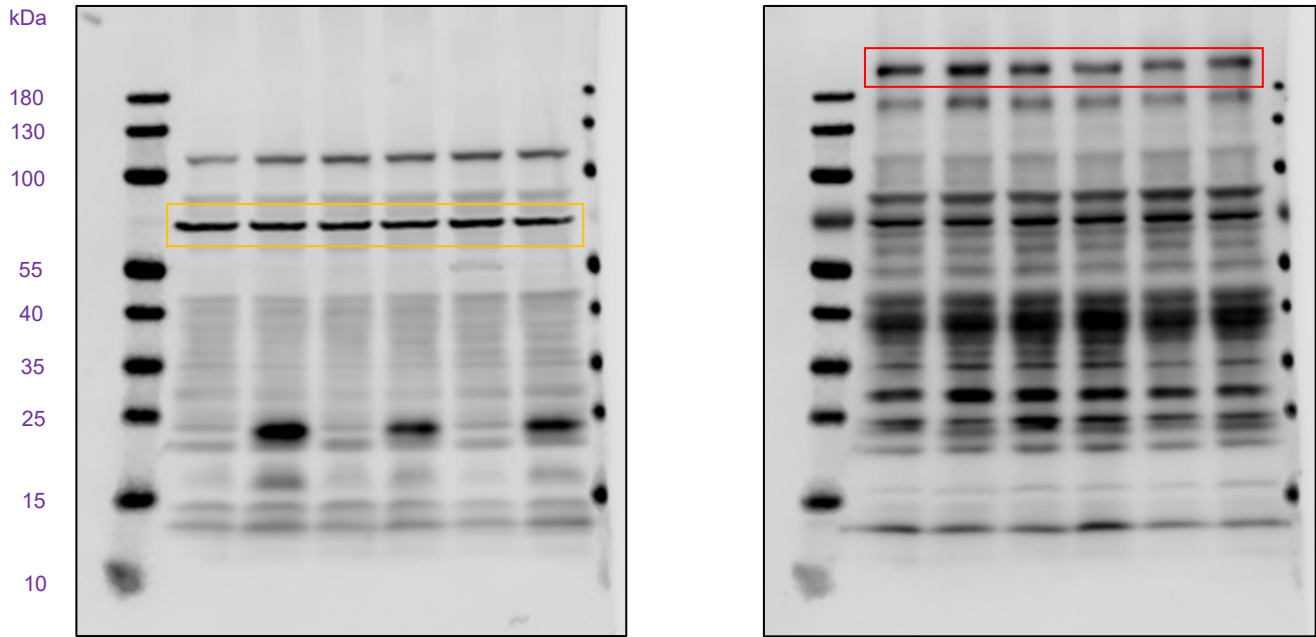
**Full unedited gel for Fig.4 (E)**

Left panel, HSC70 (70 kDa) (1:10000, #SC-7298, Santa Cruz Biotechnology) and VEGF-B (21 and 32 kDa) (1:1000, #AF751, R&D Systems). Right panel, VEGFR-1 (100 kDa) (1:1000, #AF471, R&D Systems).



**Full unedited gel for Fig.4 (E)**

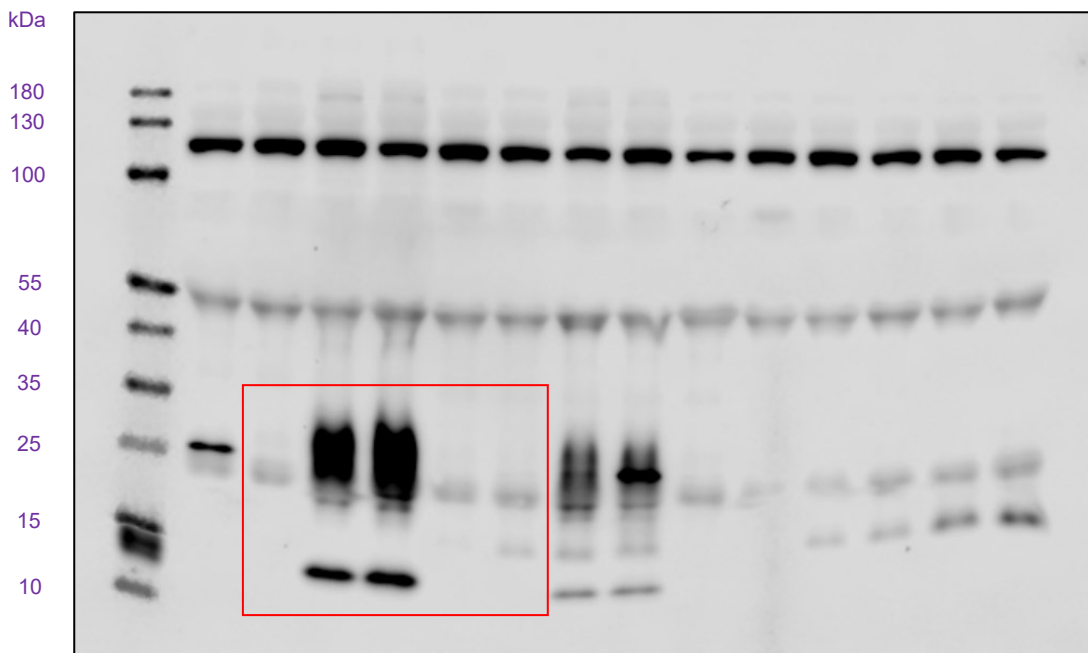
Left panel, **HSC70 (70 kDa) (1:10000, #SC-7298, Santa Cruz Biotechnology)**. Right panel, **VEGFR-2 (230 kDa) (1:1000, #AF644, R&D Systems)**.



**Supplementary results**

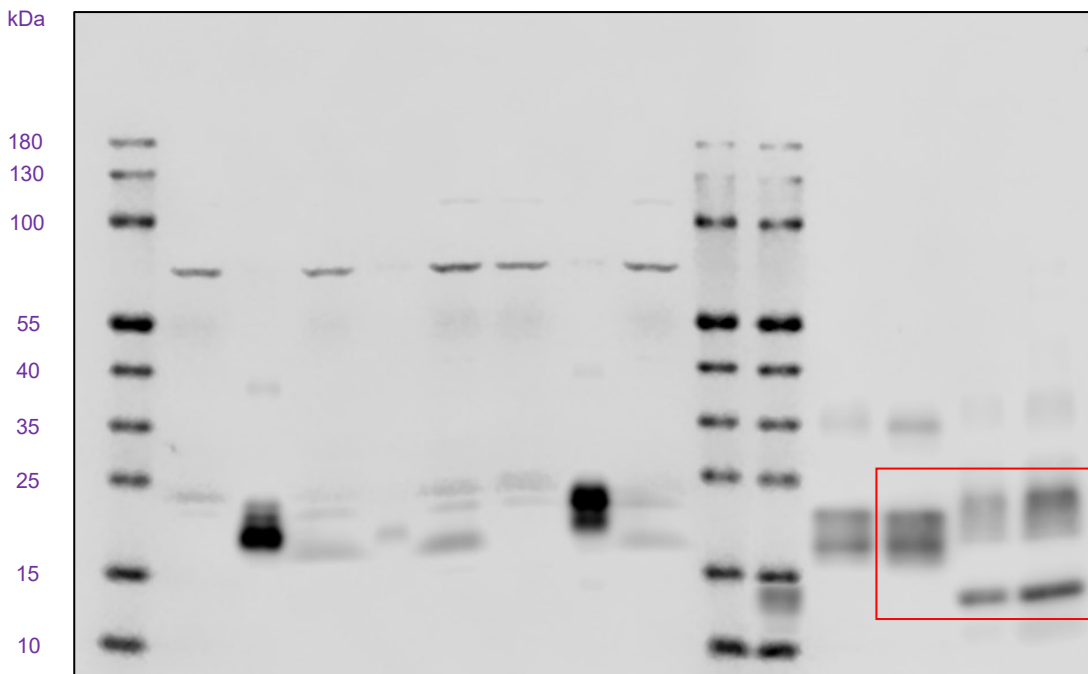
**Full unedited gel for Fig.12 (D)**

**VEGF-B (21 and 32 kDa) (1:1000, #AF590, R&D Systems).**



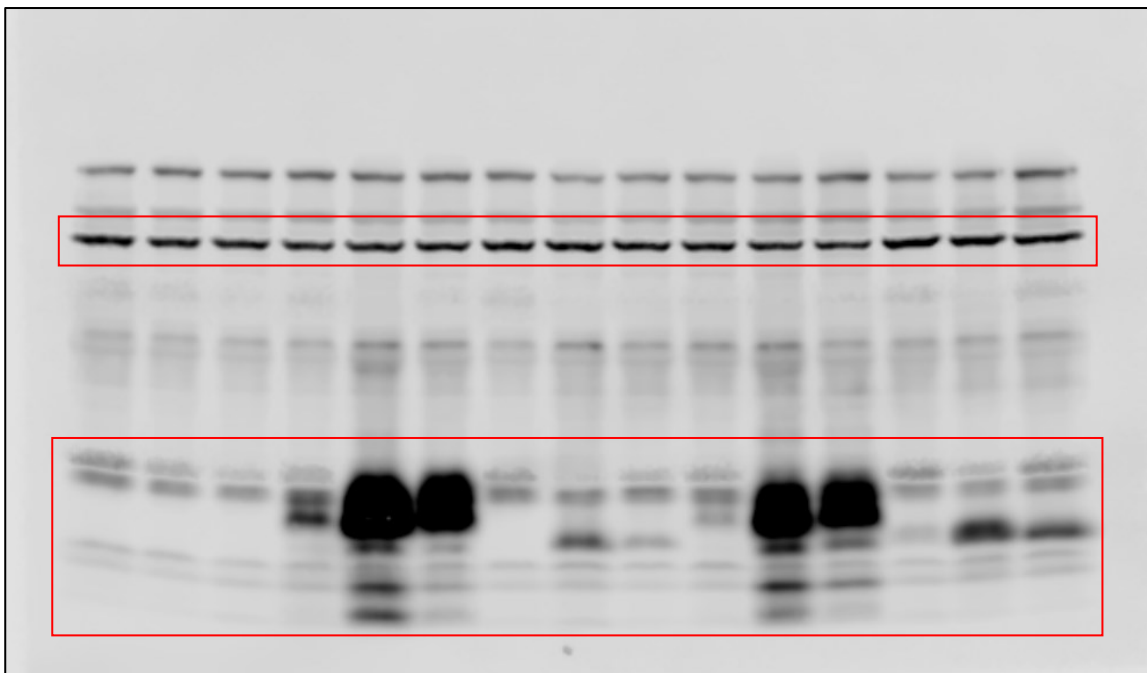
**Full unedited gel for Fig.12 (E)**

**VEGF-B (21 and 32 kDa) (1:1000, #AF590, R&D Systems).**



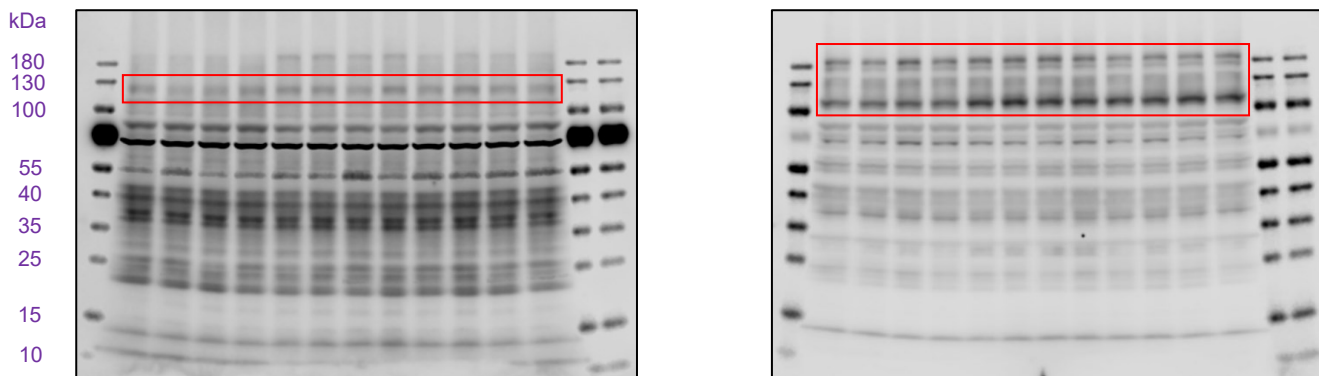
**Full unedited gel for Fig.12 (H)**

**HSC70 (70 kDa) (1:10000, #SC-7298, Santa Cruz Biotechnology) and VEGF-B (21 and 32 kDa) (1:1000, #AF590, R&D Systems).**



**Full unedited gel for Fig.14 (A)**

**Left panel, p-VEGFR-1 (Y1213) (130 kDa) (1:1000, #AF4170, R&D Systems). Right panel, VEGFR-1 (100 and 180 kDa) (1:1000, #AF471, R&D Systems).**



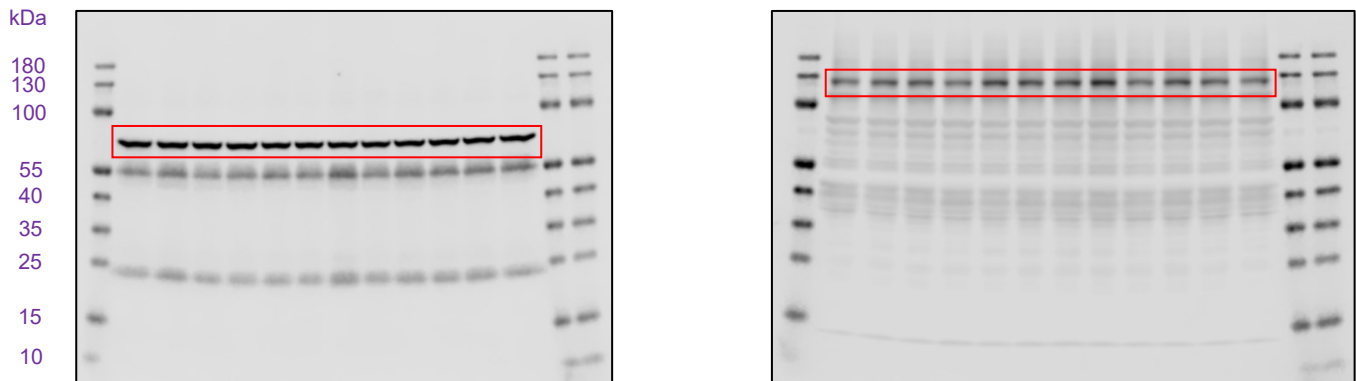
**Full unedited gel for Fig.14 (A)**

**Left panel, VEGFR-2 (150 and 230 kDa) (1:1000, #AF644, R&D Systems). Right panel, HSC70 (70 kDa) (1:10000, #SC-7298, Santa Cruz Biotechnology).**



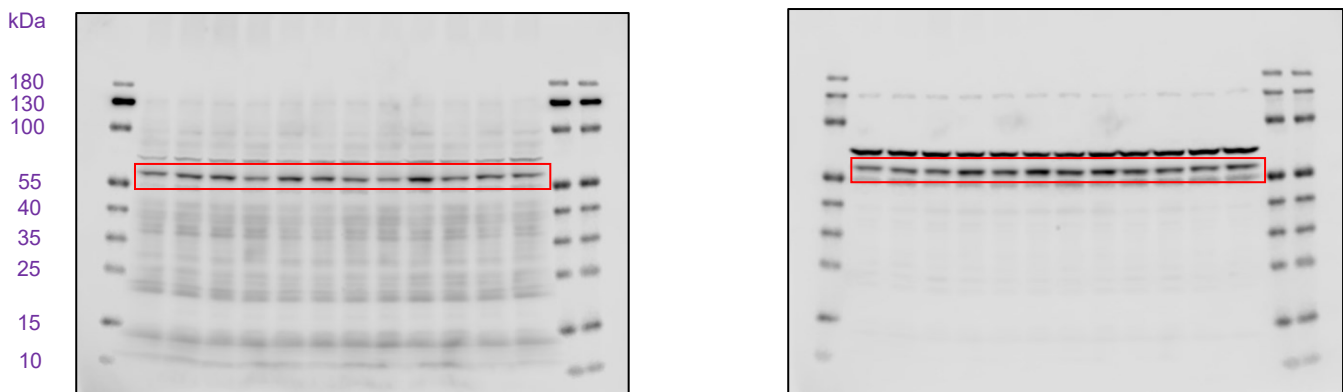
**Full unedited gel for Fig.14 (A)**

Left panel, **HSC70 (70 kDa) (1:10000, #SC-7298, Santa Cruz Biotechnology)**. Right panel, **NRP-1 (120 kDa) (1:1000, #AF566, R&D Systems)**.



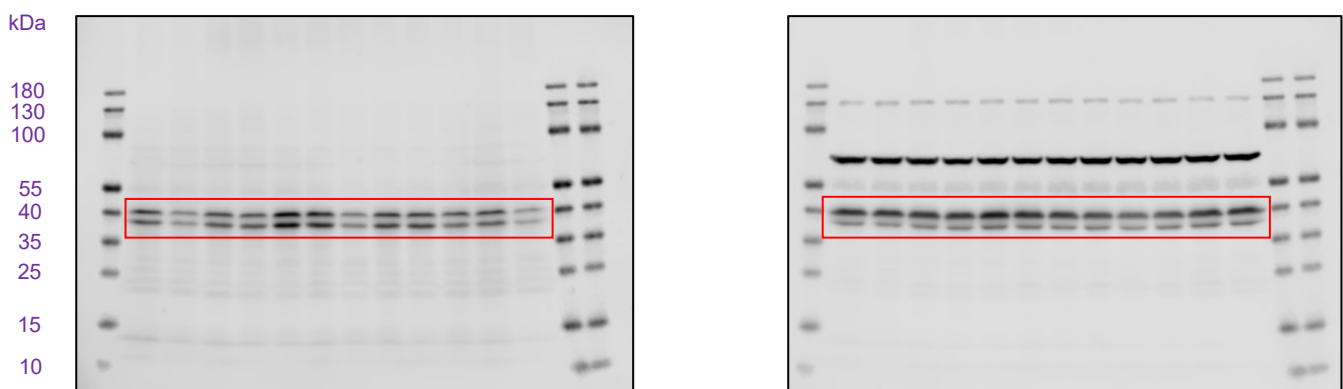
**Full unedited gel for Fig.14 (A)**

Left panel, **p-AKT (Ser473) (60 kDa) (1:1000, #9271, Cell Signaling)**. Right panel, **AKT (60 kDa) (1:1000, #9272, Cell Signaling)**.



**Full unedited gel for Fig.14 (A)**

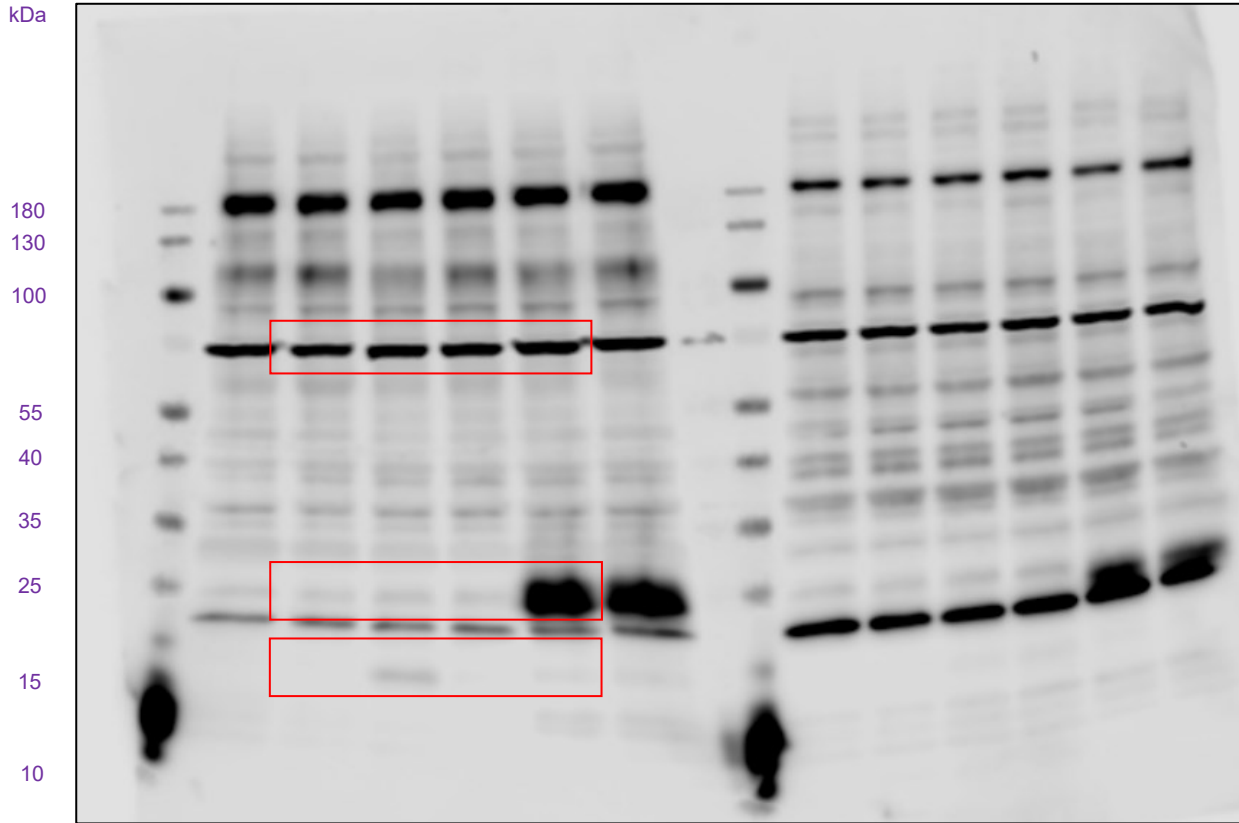
Left panel, **p-p44/42 MAPK (Erk1/2) (Thr202/Tyr204) (42 and 44 kDa) (1:1000, #9101, Cell Signaling)**. Right panel, **p44/42 MAPK (Erk1/2) (42 and 44 kDa) (1:1000, #9102, Cell Signaling)**.



**Reviewer questions**

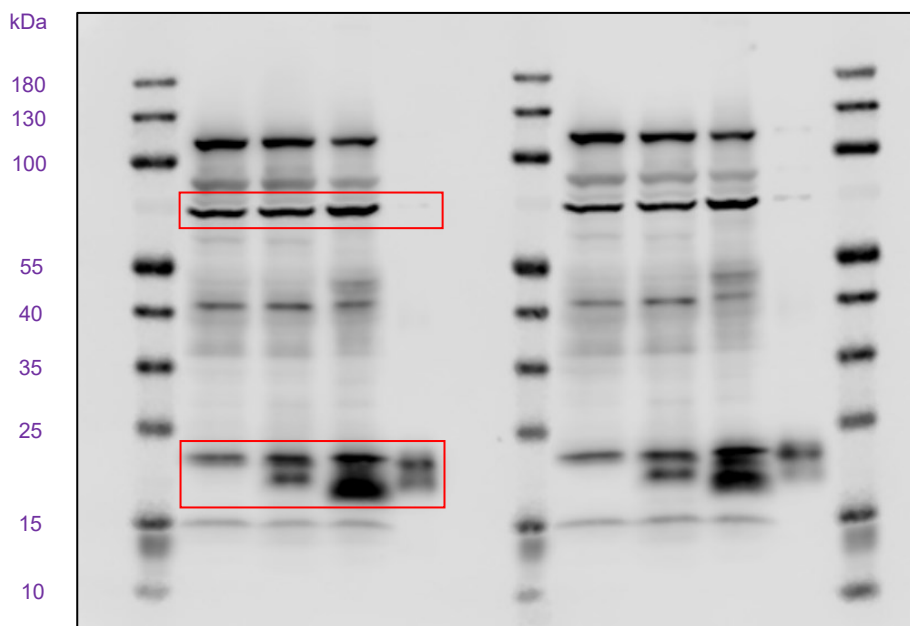
**Full unedited gel for Fig.2 (A)**

**HSC70 (70 kDa) (1:10000, #SC-7298, Santa Cruz Biotechnology) and VEGF-B (21 and 32 kDa) (1:1000, #AF751, R&D Systems).**



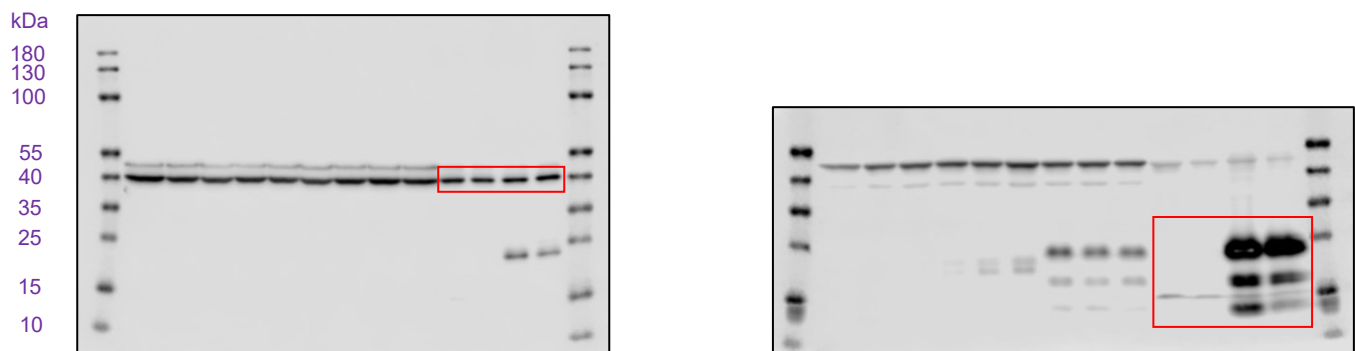
**Full unedited gel for Fig.6 (B)**

**HSC70 (70 kDa) (1:10000, #SC-7298, Santa Cruz Biotechnology) and VEGF-B (21 and 32 kDa) (1:1000, #AF590, R&D Systems).**



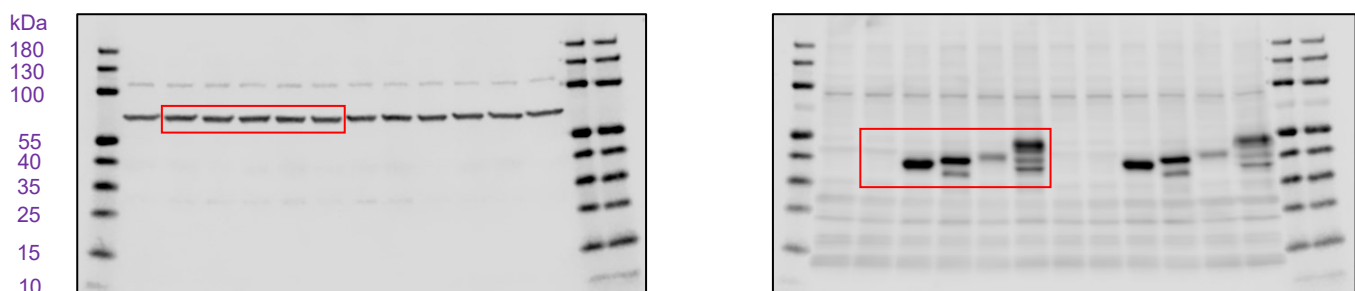
**Full unedited gel for Fig.14**

**Left panel,  $\beta$ -actin (45 kDa) (1:10000, #4967, Cell Signaling). Right panel, VEGF-B (21 and 32 kDa) (1:1000, #AF590 + #AF751, R&D Systems).**



**Full unedited gel for Fig.19 (A)**

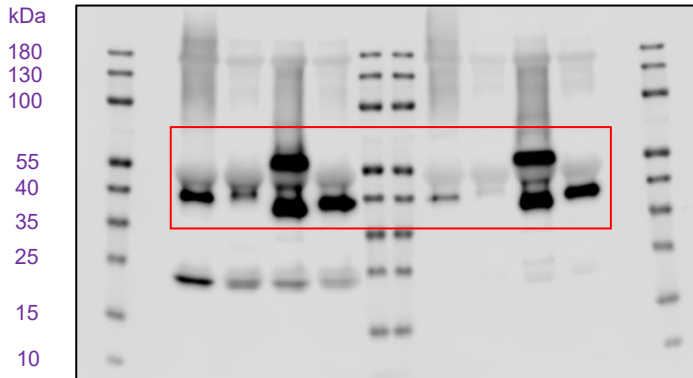
**Left panel, HSC70 (70 kDa) (1:10000, #SC-7298, Santa Cruz Biotechnology). Right panel, GFP (44, 48.9, 48.9, and 49.2 kDa) (1:1000, #ab5450, Abcam).**





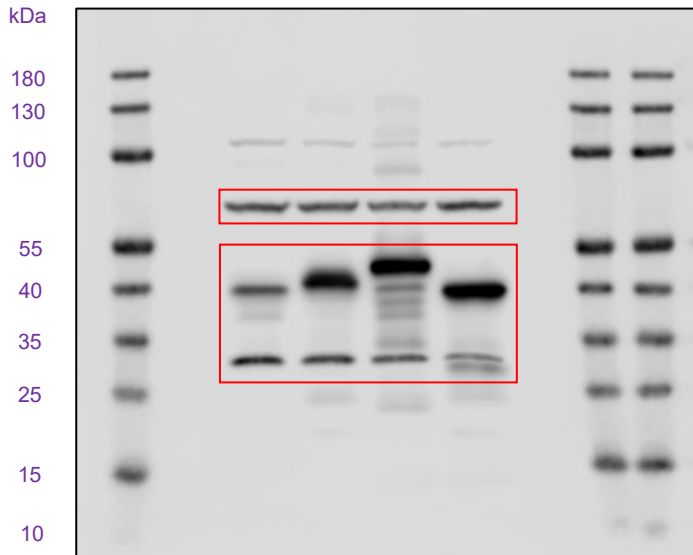
**Full unedited gel for Fig.19 (B)**

**GFP (48.9, 48.9, 49.2, and 44 kDa) (1:1000, #ab5450, Abcam).**



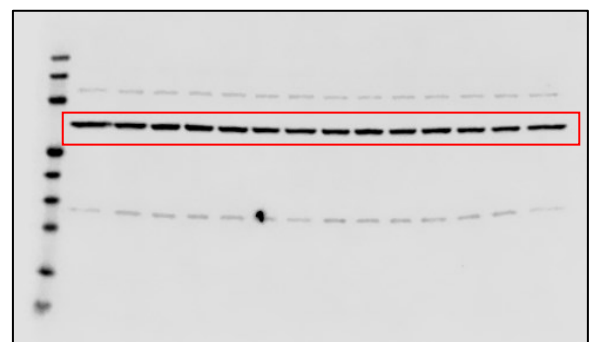
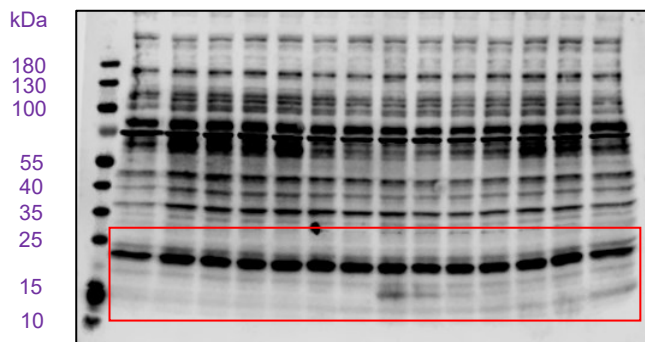
**Full unedited gel for Fig.19 (C)**

**HSC70 (70 kDa) (1:10000, #SC-7298, Santa Cruz Biotechnology) and GFP (48.9, 48.9, 49.2, and 44 kDa) (1:1000, #ab5450, Abcam).**



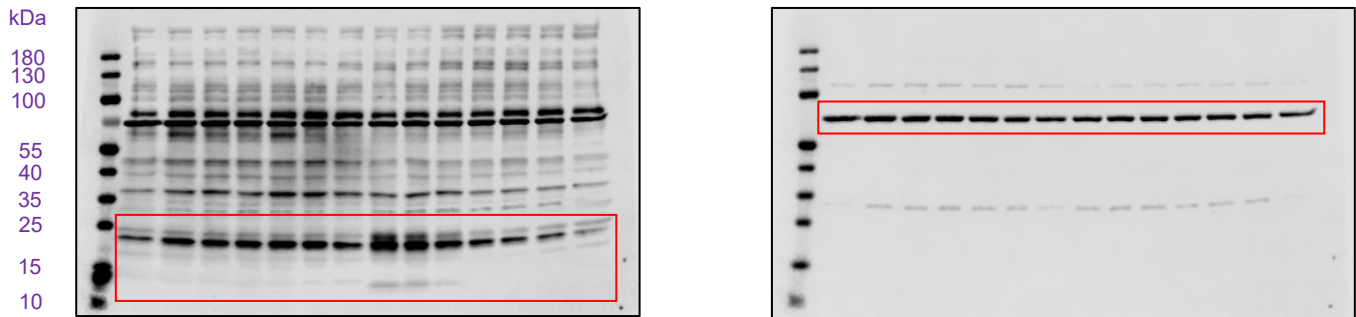
**Full unedited gel for Fig.20 (A)**

**Left panel, VEGF-B (21 kDa) (1:1000, #AF590, R&D Systems). Right panel, HSC70 (70 kDa) (1:10000, #SC-7298, Santa Cruz Biotechnology).**



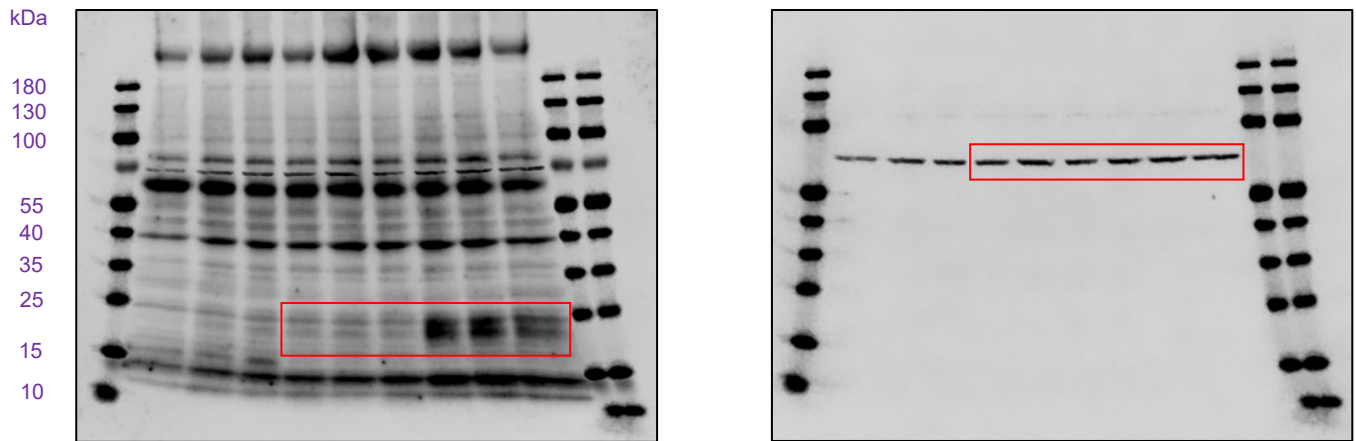
**Full unedited gel for Fig.20 (A)**

Left panel, VEGF-B (32 kDa) (1:1000, #AF590, R&D Systems). Right panel, HSC70 (70 kDa) (1:10000, #SC-7298, Santa Cruz Biotechnology).



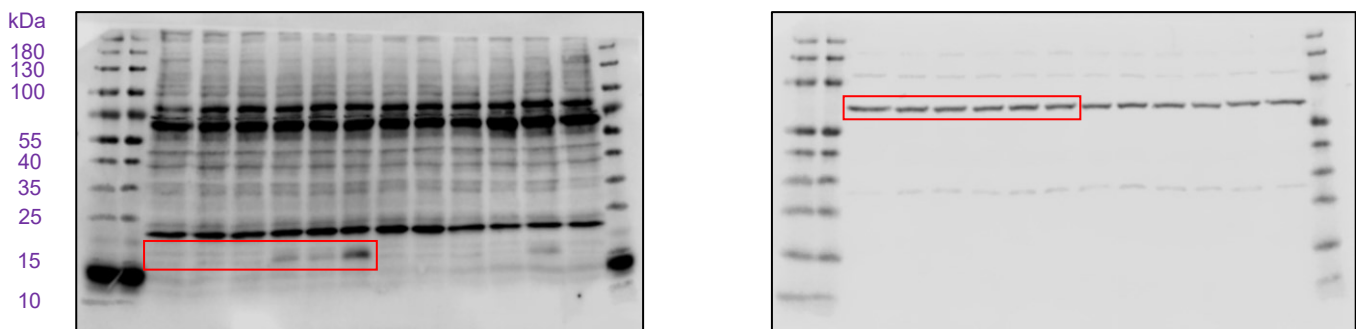
**Full unedited gel for Fig.20 (B)**

Left panel, VEGF-B (32 kDa) (1:1000, #AF590, R&D Systems). Right panel, HSC70 (70 kDa) (1:10000, #SC-7298, Santa Cruz Biotechnology).



**Full unedited gel for Fig.20 (B)**

Left panel, VEGF-B (21 kDa) (1:1000, #AF590, R&D Systems). Right panel, HSC70 (70 kDa) (1:10000, #SC-7298, Santa Cruz Biotechnology).



**Full unedited gel for Fig.24 (B)**

Left panel, NRP-1 (120 kDa) (1:1000, #AF566, R&D Systems). Right panel,  $\beta$ -actin (45 kDa) (1:10000, #4967, Cell Signaling).

