

## Supplementary Online Content

Chew EY, Clemons TE, Agrón E, et al. Ten-year follow-up of age-related macular degeneration in the Age-Related Eye Disease Study. *JAMA Ophthalmol*. Published online January 2, 2014.  
doi:10.1001/jamaophthalmol.2013.6636.

**eFigure 1.** Ten-year rates of development of central GA and neovascular AMD by baseline AMD status.

**eFigure 2.** Life-table estimates of large drusen and advanced AMD in participants with no large drusen or advanced AMD at baseline.

**eFigure 3.** Life-table estimates of advanced AMD in eyes that developed large drusen and retinal pigment epithelial abnormalities during the study.

**eFigure 4.** Life-table estimates of advanced AMD in participants with bilateral large drusen at baseline.

**eFigure 5.** Life-table estimates of advanced AMD in right eyes with large drusen at baseline according to location of large drusen and presence of retinal pigment epithelial abnormalities.

**eFigure 6.** Life-table estimates of advanced AMD in eyes with fellow eyes with and without advanced AMD.

**eFigure 7.** Life-table estimates of neovascular AMD in eyes that developed geographic atrophy, N = 911.

**eFigure 8.** Probability of advanced AMD by AREDS simple scale, N = 3806.

**eFigure 9.** Median visual acuity.

**eTable.** Drusen size for eyes with central geographic atrophy (CGA) and neovascular age-related macular degeneration (NV AMD).

This supplementary material has been provided by the authors to give readers additional information about their work.

Figure 1. Ten-year rates of development of central GA and neovascular AMD by baseline AMD status.

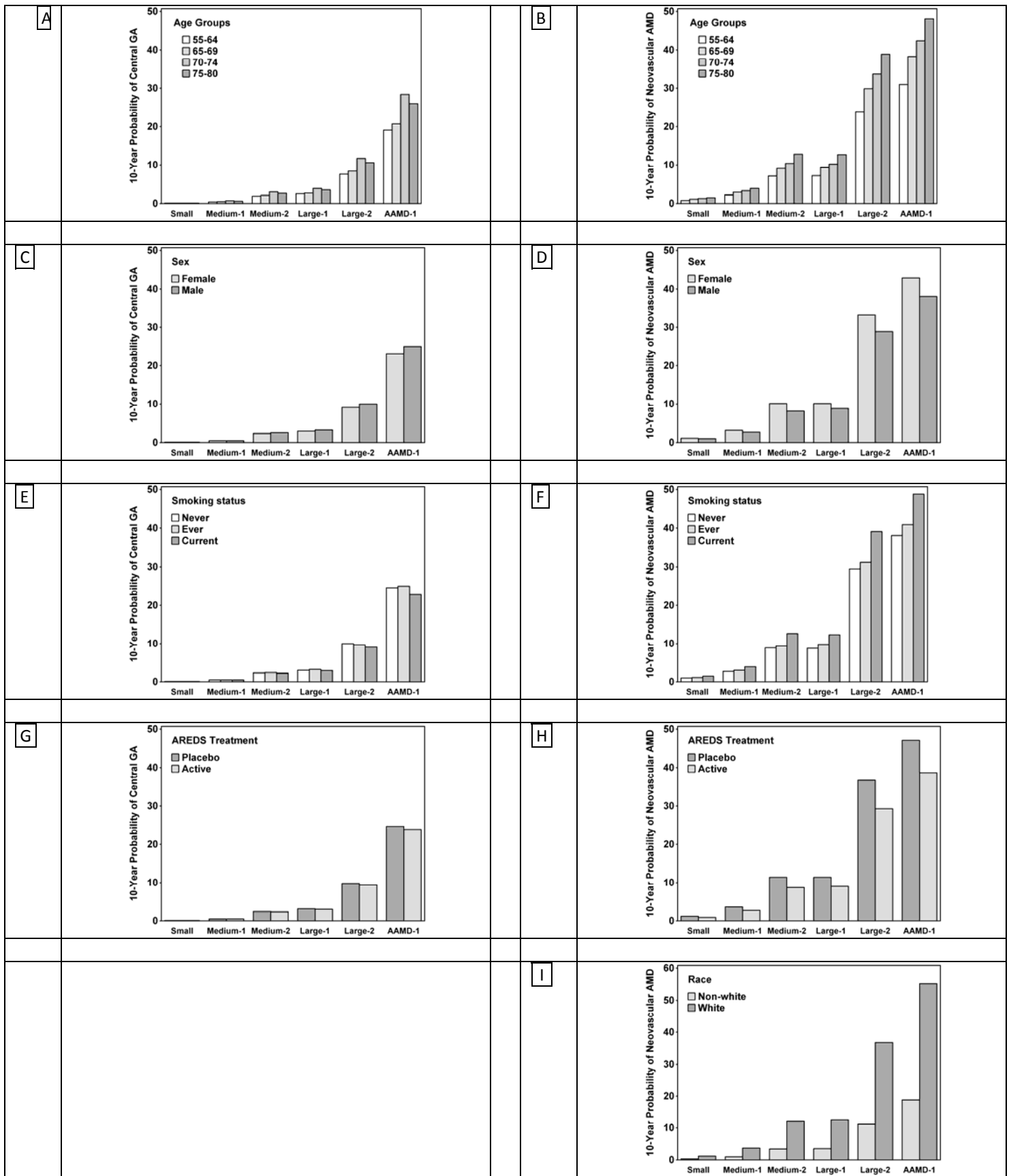


Figure 2. Life-table estimates of large drusen and advanced AMD in participants with no large drusen or advanced AMD at baseline.

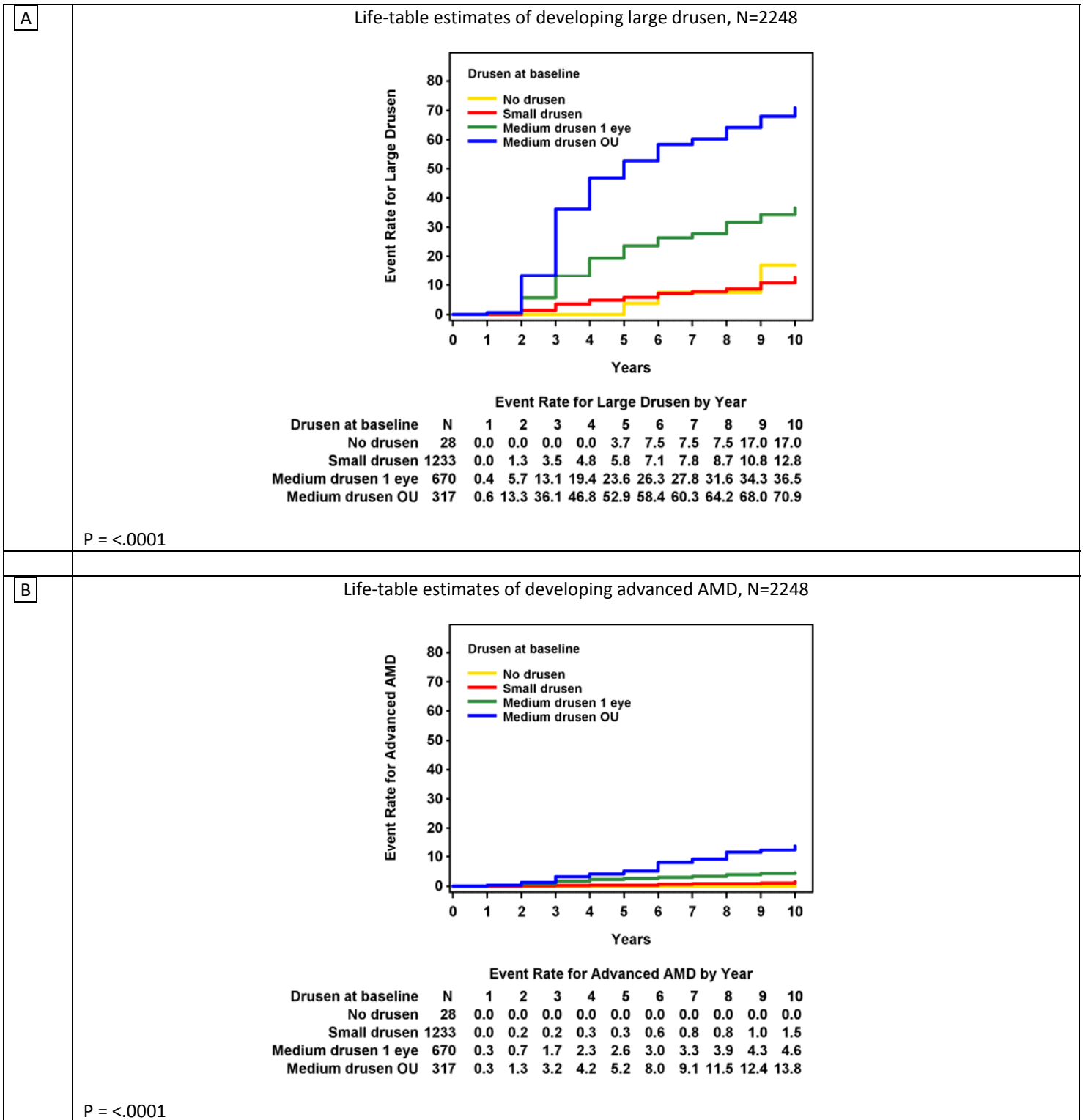


Figure 3. Life-table estimates of advanced AMD in eyes that developed large drusen and retinal pigment epithelial abnormalities during the study.

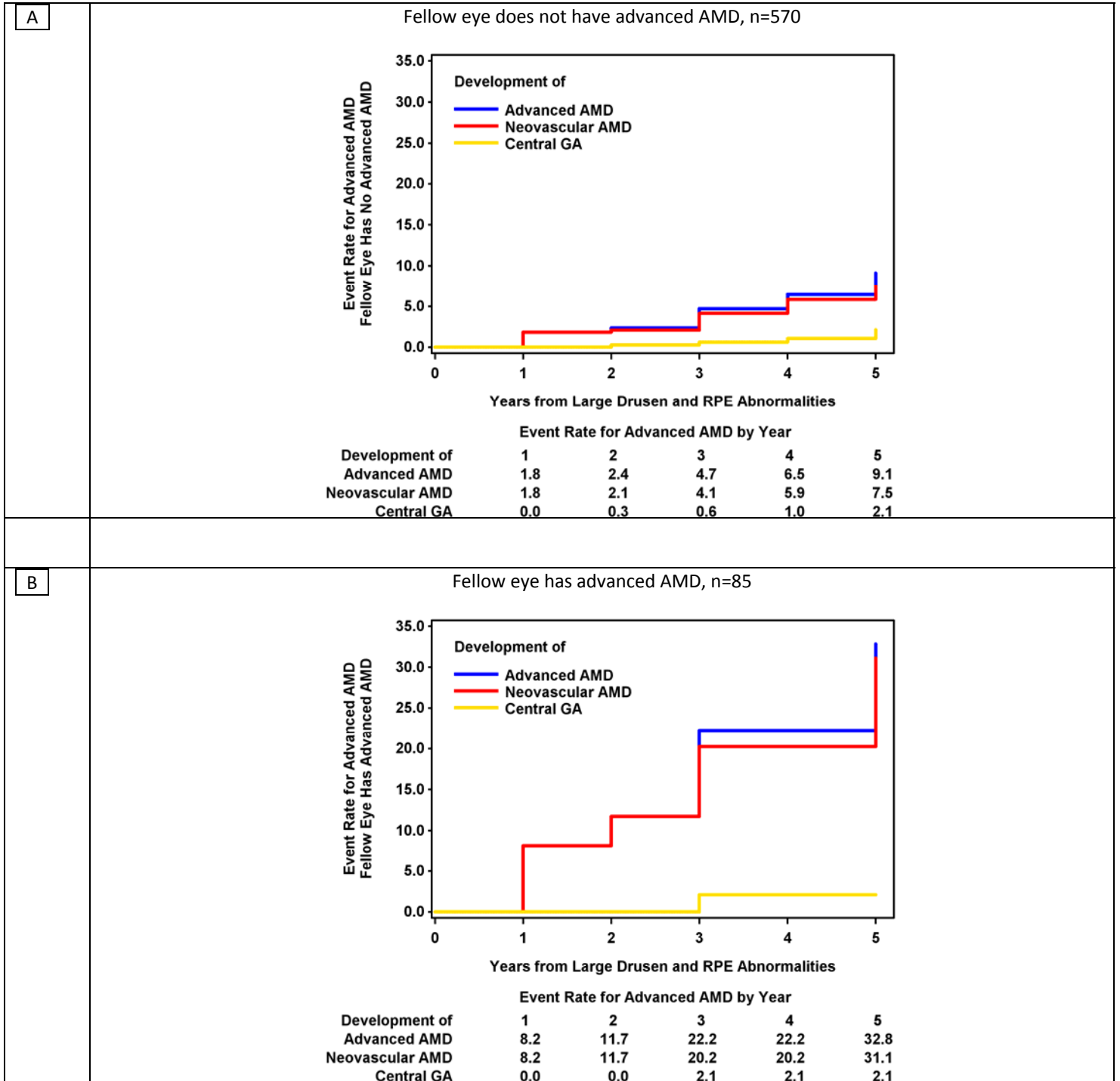


Figure 4. Life-table estimates of advanced AMD in participants with bilateral large drusen at baseline.

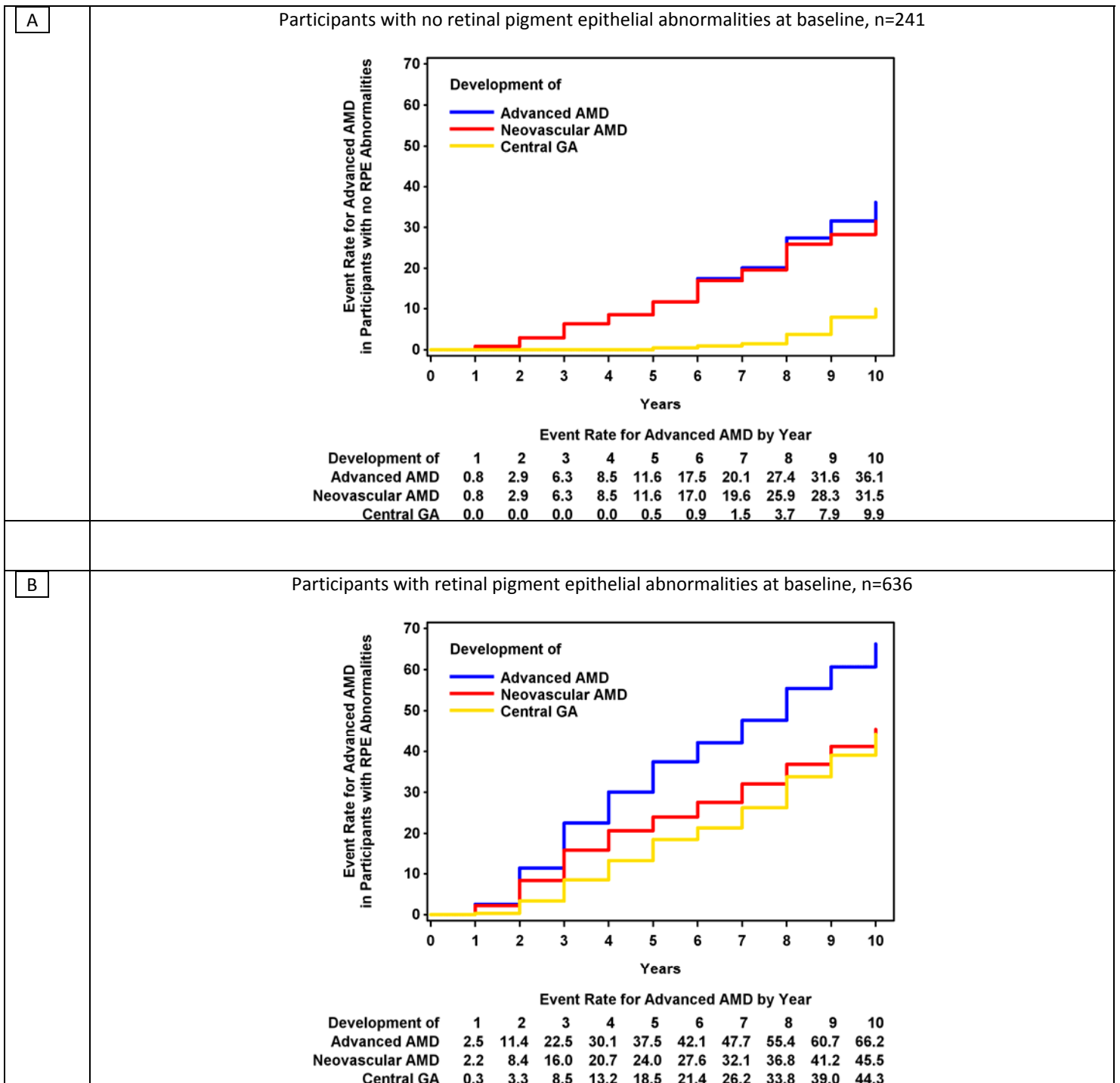


Figure 5. Life-table estimates of advanced AMD in right eyes with large drusen at baseline according to location of large drusen and presence of retinal pigment epithelial abnormalities.

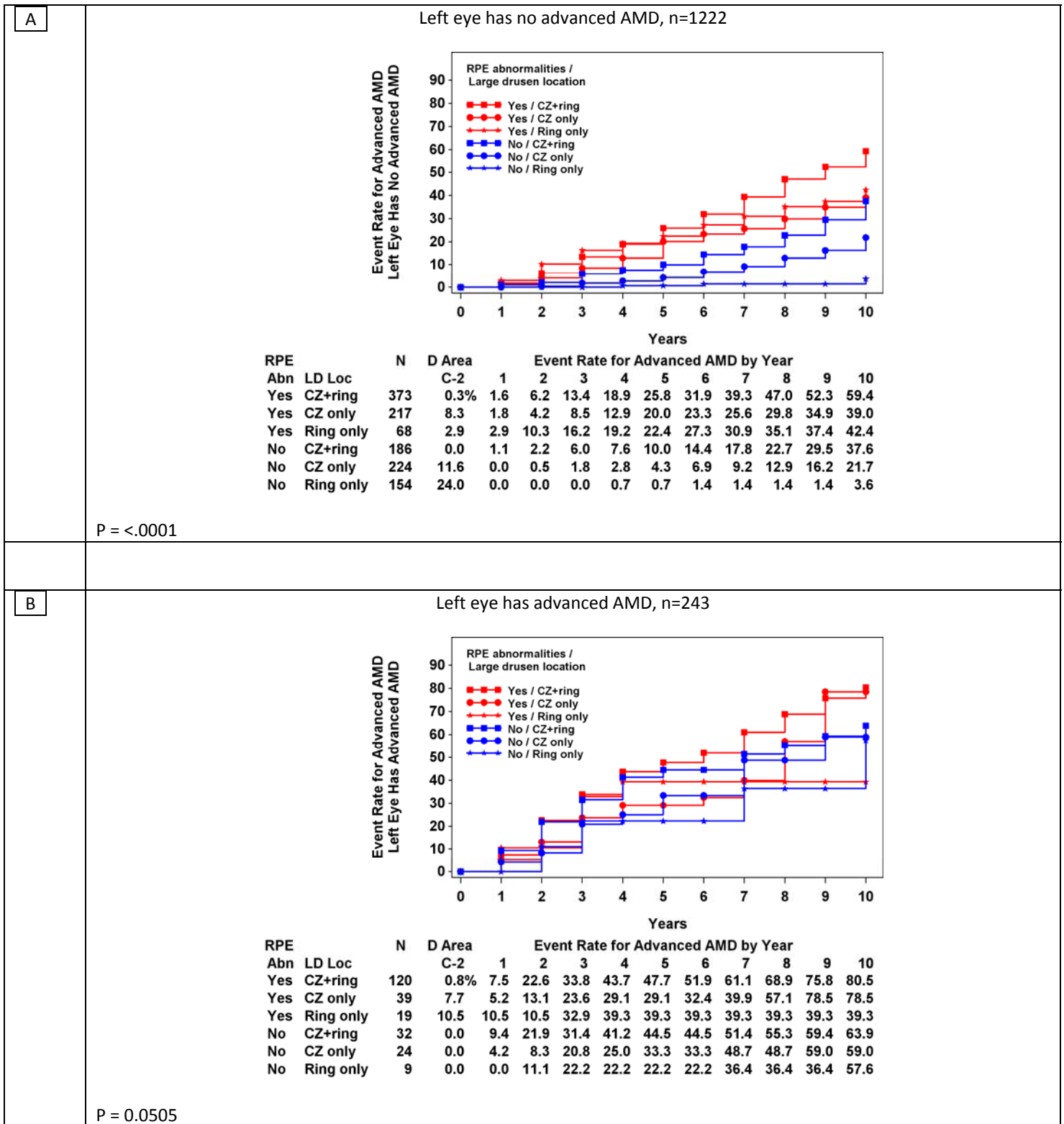


Figure 6. Life-table estimates of advanced AMD in eyes with fellow eyes with and without advanced AMD.

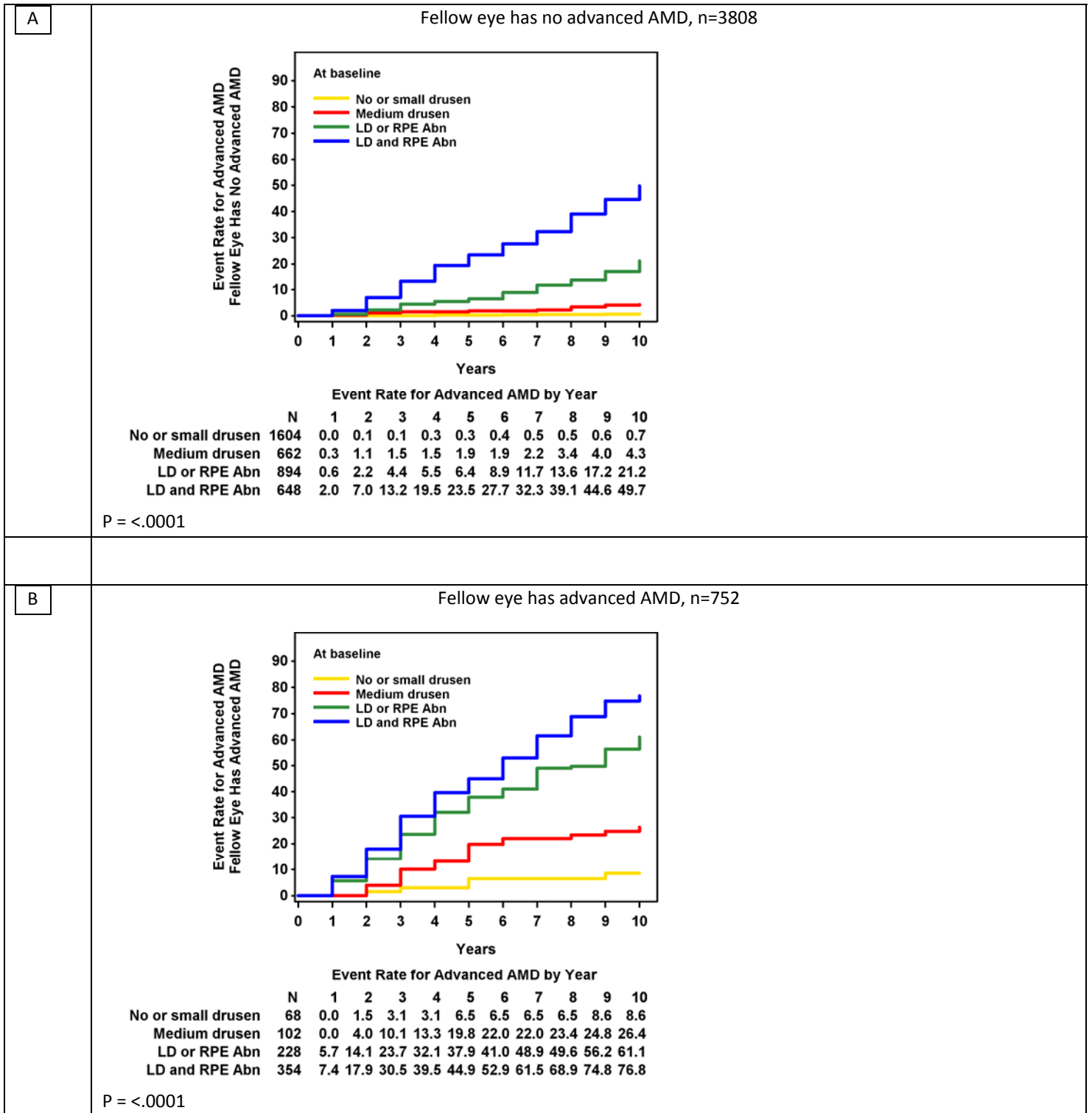


Figure 7. Life-table estimates of neovascular AMD in eyes that developed geographic atrophy, N = 911.

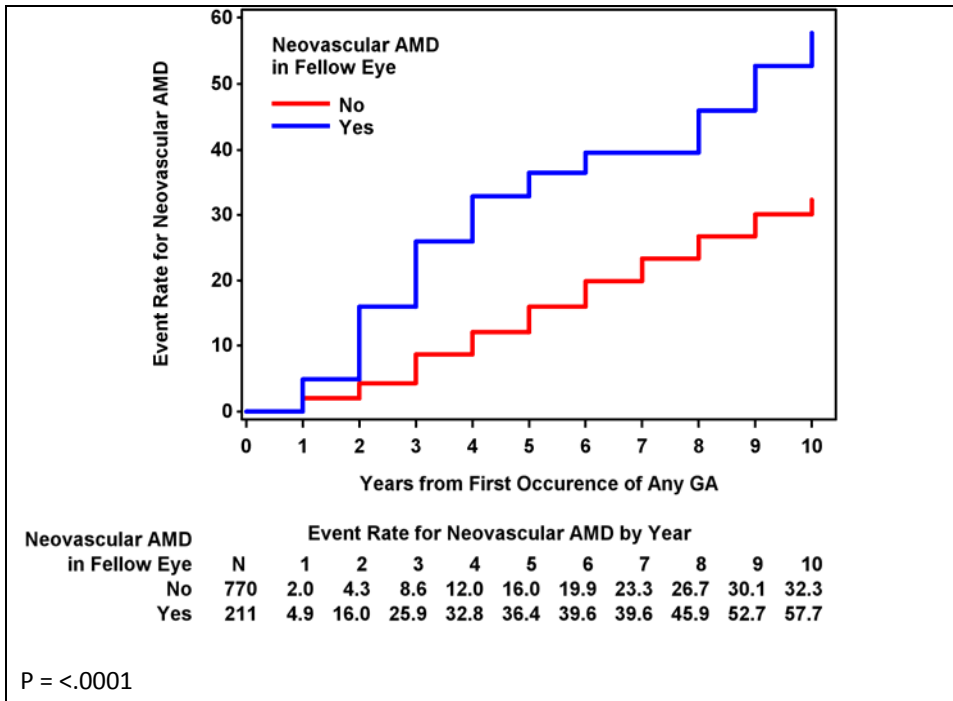




Figure 8. Probability of advanced AMD by AREDS simple scale, N = 3806.

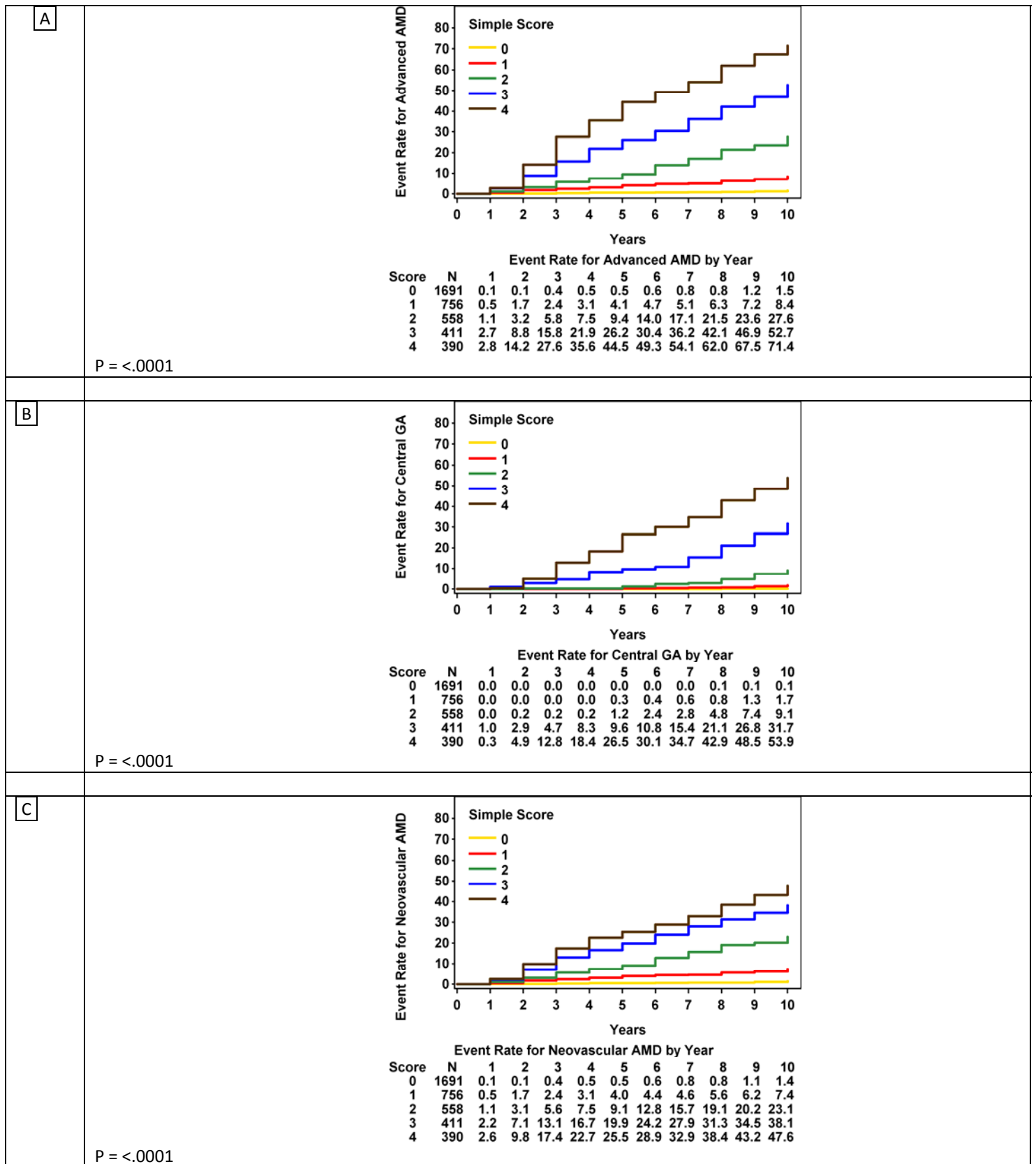
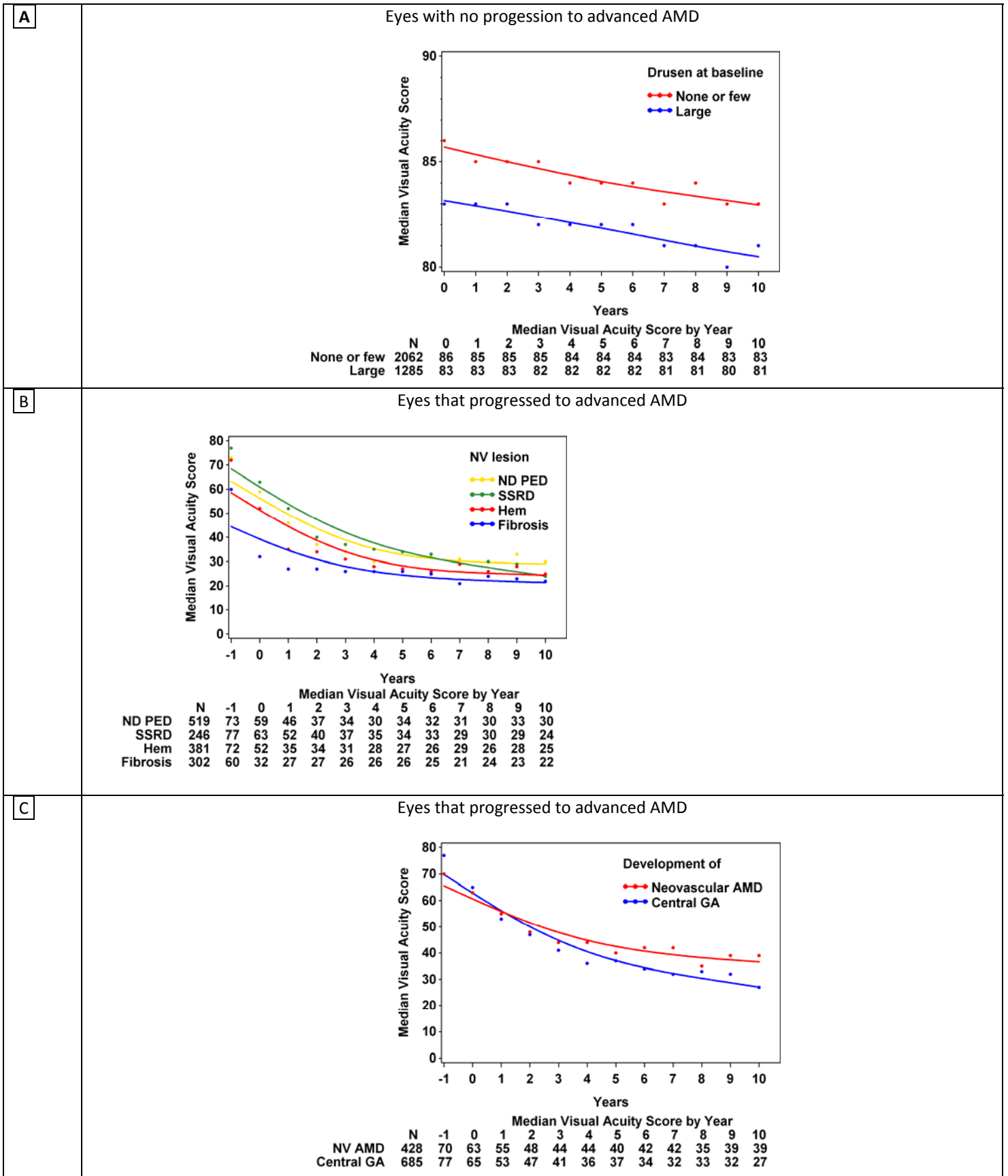


Figure 9. Median visual acuity.



**eTable. Drusen size for eyes with central geographic atrophy (CGA) and neovascular age-related macular degeneration (NV AMD).**

CGA								
		Drusen size						P
		Small	Medium-1	Medium-2	Large-1	Large-2	AAMD-1	
<b>Age</b>	55-64	0.1	0.4	1.9	2.5	7.6	19.1	
	65-69	0.1	0.5	2.1	2.7	8.4	20.7	0.590
	70-74	0.1	0.7	3.0	3.9	11.7	28.4	0.007
	75-80	0.1	0.6	2.6	3.5	10.6	26.0	0.070
<b>Sex</b>	Female	0.1	0.5	2.3	2.9	9.1	23.0	
	Male	0.1	0.5	2.5	3.2	10.0	25.0	0.580
<b>Smoking</b>	Never	0.1	0.5	2.3	3.0	10.0	24.6	
	Ever	0.1	0.5	2.4	3.2	9.7	25.0	0.480
	Current	0.1	0.5	2.2	2.9	9.1	22.8	0.570
<b>Treatment</b>	Placebo	0.1	0.5	2.4	3.1	9.8	24.7	
	Active	0.1	0.5	2.3	3.0	9.4	23.9	0.780
NV AMD								
		Drusen size						P
		Small	Medium-1	Medium-2	Large-1	Large-2	AAMD-1	
<b>Age</b>	55-64	0.8	2.2	7.1	7.2	23.9	31.0	
	65-69	1.1	2.9	9.1	9.3	29.9	38.3	0.010
	70-74	1.3	3.3	10.4	10.2	33.7	42.4	<0.001
	75-80	1.5	3.9	12.8	12.7	38.9	48.1	<0.001
<b>Sex</b>	Female	1.1	3.1	10.1	10.1	33.2	42.9	
	Male	1.0	2.6	8.1	8.8	28.9	38.1	0.005
<b>Smoking</b>	Never	1.0	2.7	8.9	8.8	29.5	38.1	
	Ever	1.1	3.0	9.4	9.8	31.2	40.9	0.040
	Current	1.5	3.9	12.6	12.3	39.1	48.8	<0.001
<b>Treatment</b>	Placebo	1.2	3.6	11.4	11.4	36.7	47.1	
	Active	0.9	2.7	8.7	9.0	29.3	38.7	<0.001
<b>Race</b>	Non-white	0.3	1.0	3.3	3.4	11.2	18.8	
	White	1.2	3.6	12.2	12.6	36.8	55.2	<0.011