

1. Pre-configured TENS treatment modules
2. Measure the galvanic response value before and after each treatment.
3. Store the data in the memory.

Figure S1. The scheme of how the galvanic response value data from the WeHeal® transcutaneous nerve stimulation (TENS) was collected from the devices to the researcher.

Measurements include BASDAI, BASFI, Schober's test, Finger to floor test (flexion), enthesitis score, cytokines, chemokines, inflammatory factors, and immunoglobulins.

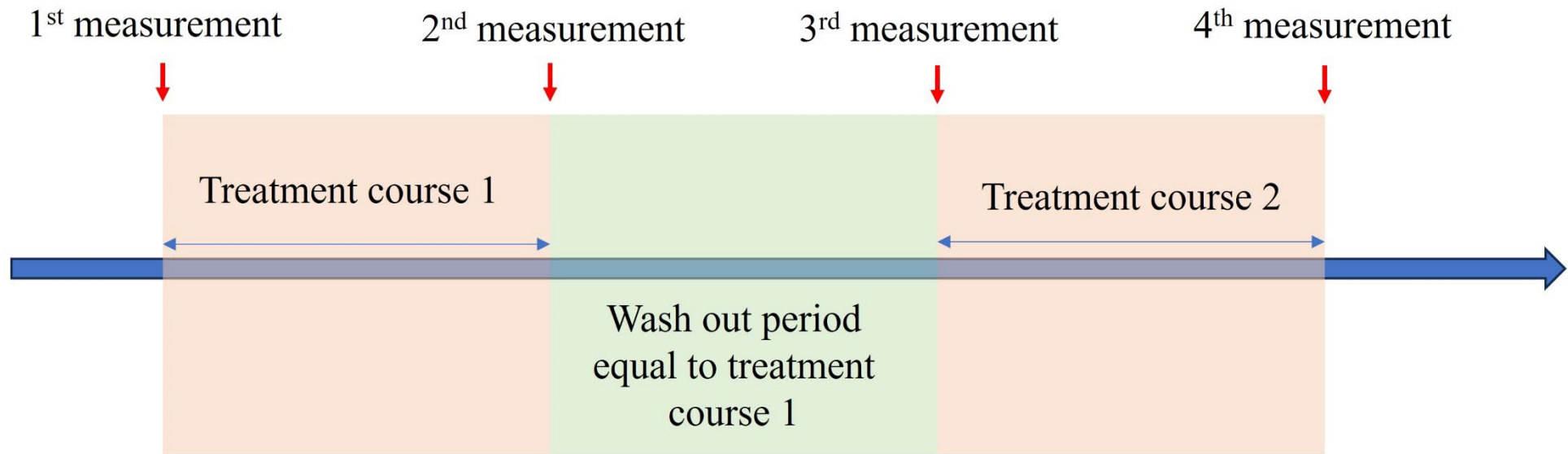


Figure S2. Cross-over study design. BASDAI, Bath Ankylosing Spondylitis Disease Activity Index; BASFI, Bath Ankylosing Spondylitis Functional Index

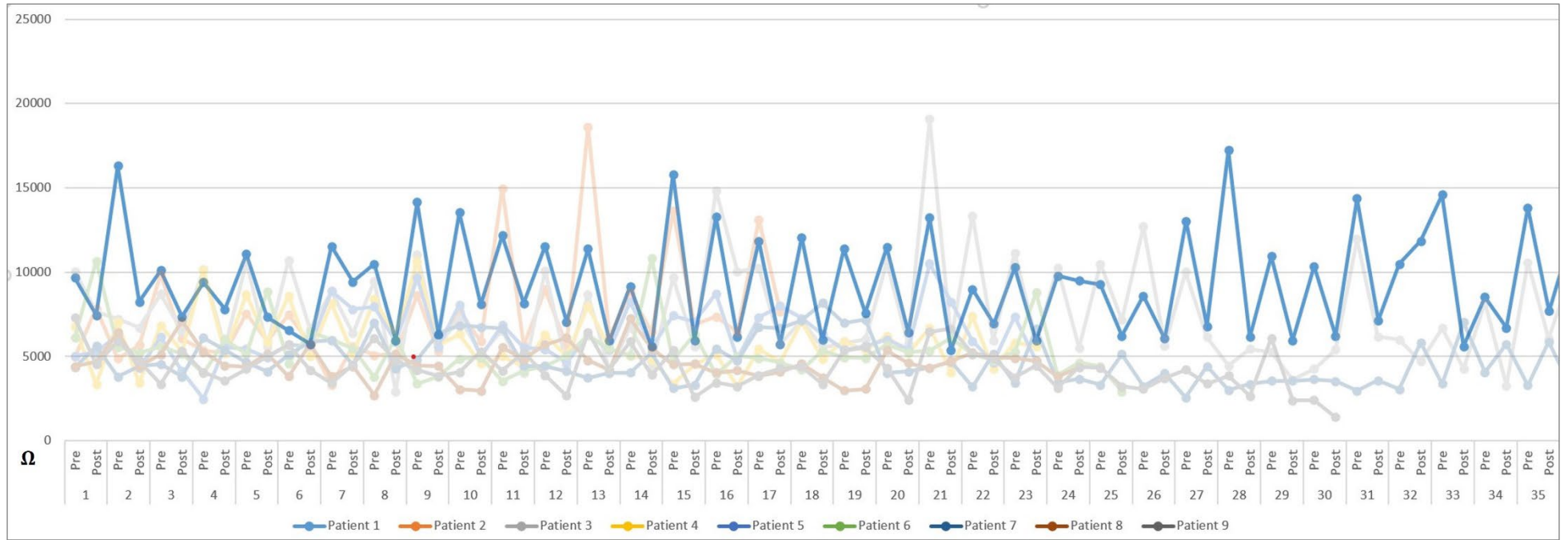


Figure S3. The results of galvanic response in pre- and post- each treatment