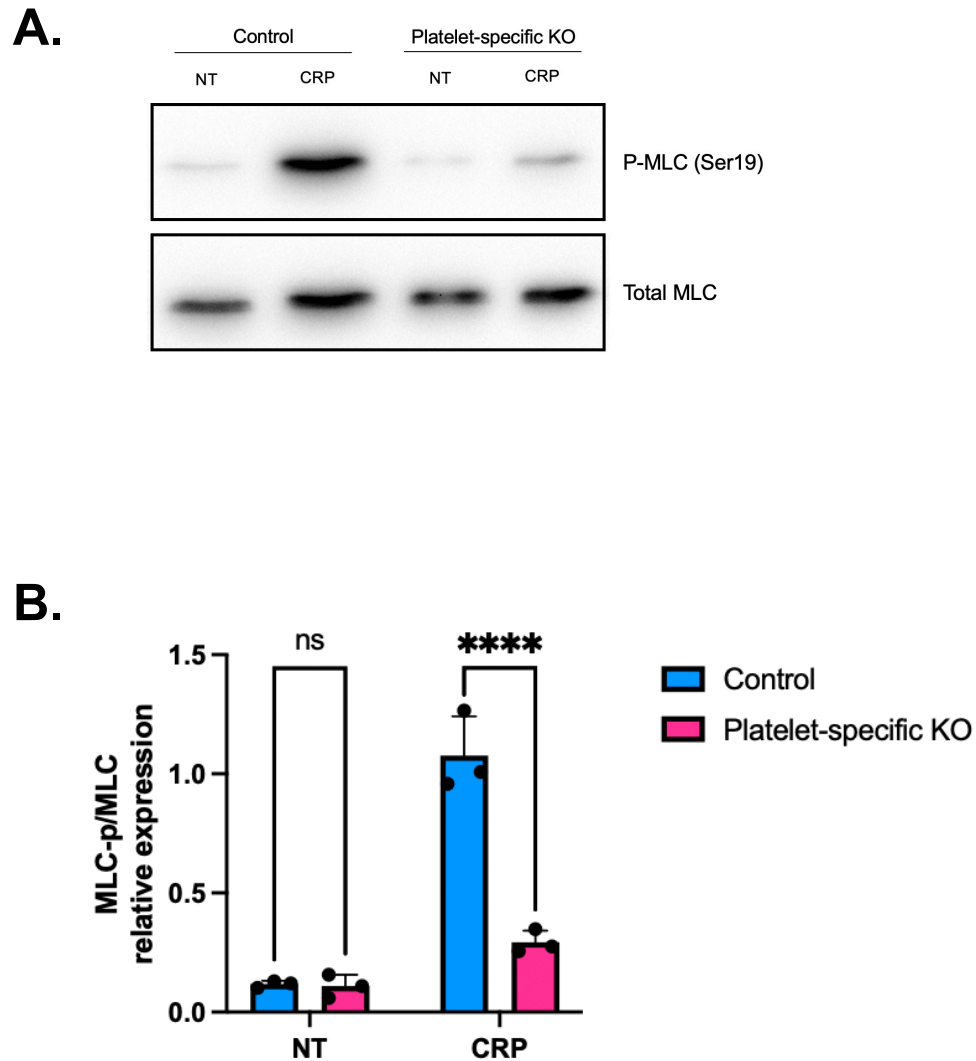


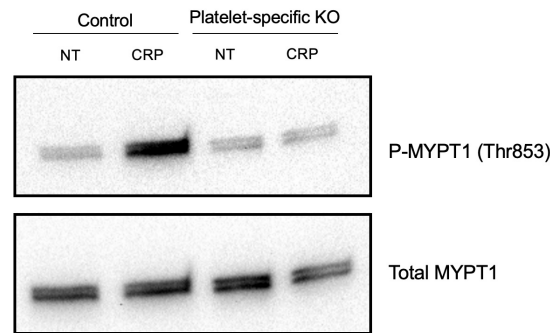
Supplemental Figure S1



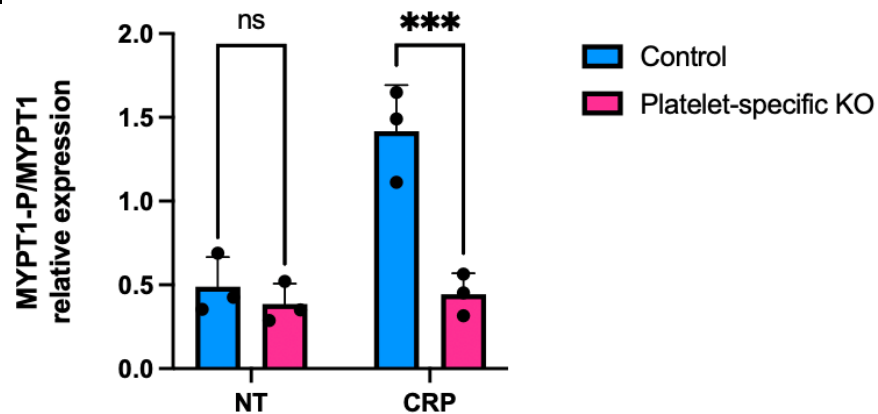
Supplemental Figure S1. A. Immunoblot depicts MLC phosphorylation at Ser19 in floxed platelets (control) and FLNA-null platelets (platelet-specific KO) after treatment with the GPVI agonist collagen-related peptide (CRP) at 1 $\mu\text{g}/\text{mL}$ for 5 minutes. Total MLC is shown as a loading control. **B.** Bar graph represents the densitometry quantification of the expression of p-MLC2 (Ser19) relative to total MLC proteins in floxed (control, blue bars) and FLNA-deficient (platelet-specific KO, pink bars) platelets in response to CRP. Data are mean \pm SEM, analyzed by two-way ANOVA and Tukey post-hoc multiple comparison tests, and represent a minimum of 3 independent experiments. ****, $p < 0.0001$, based on two-way ANOVA and Tukey post-hoc multiple comparison tests. NT=no treatment.

Supplemental Figure S2

A.



B.



Supplemental Figure S2. A. Immunoblot depicts MYPT1 phosphorylated at Thr853 in floxed platelets (control) and FLNA-null platelets (platelet-specific KO) after stimulation with the GPVI agonist collagen-related peptide (CRP) at 1 $\mu\text{g}/\text{mL}$ for 5 minutes. Total MYPT1 is shown as a loading control. **B.** Bar graph represents the densitometry quantification of the expression of p-MYPT1 (Thr853) relative to total MYPT1 in floxed platelets (control, blue bars) and FLNA-null platelets (platelet-specific KO, pink bars) in response to CRP treatment. Data are mean \pm SEM, analyzed by two-way ANOVA and Tukey post-hoc multiple comparison tests, and represent a minimum of 3 independent. ***, $p < 0.001$, based on two-way ANOVA and Tukey post-hoc multiple comparison tests. NT=no treatment.