

Supplemental Information

**Synthesis and evaluation of photoaffinity labeling reagents for identifying binding sites of sulfated neurosteroids on NMDA and GABA<sub>A</sub> receptors.**

Mingxing Qian,<sup>a</sup> Yuanjian Xu,<sup>a</sup> Hong-Jin Shu,<sup>b</sup> Zi-Wei Chen,<sup>c,d</sup> Lei Wang,<sup>ce,f</sup> Charles F.

Zorumski,<sup>bd</sup> Alex S. Evers,<sup>acd</sup> Steven Mennerick,<sup>bd</sup> Douglas F. Covey<sup>\*abcd</sup>

<sup>a</sup>*Department of Developmental Biology, Washington University in St. Louis, 660 S. Euclid Ave., St. Louis, MO, 63110, USA*

<sup>b</sup>*Department of Psychiatry, Washington University in St. Louis, 660 S. Euclid Ave., St. Louis, MO, 63110, USA*

<sup>c</sup>*Department of Anesthesiology, Washington University in St. Louis, 660 S. Euclid Ave., St. Louis, MO, 63110, USA*

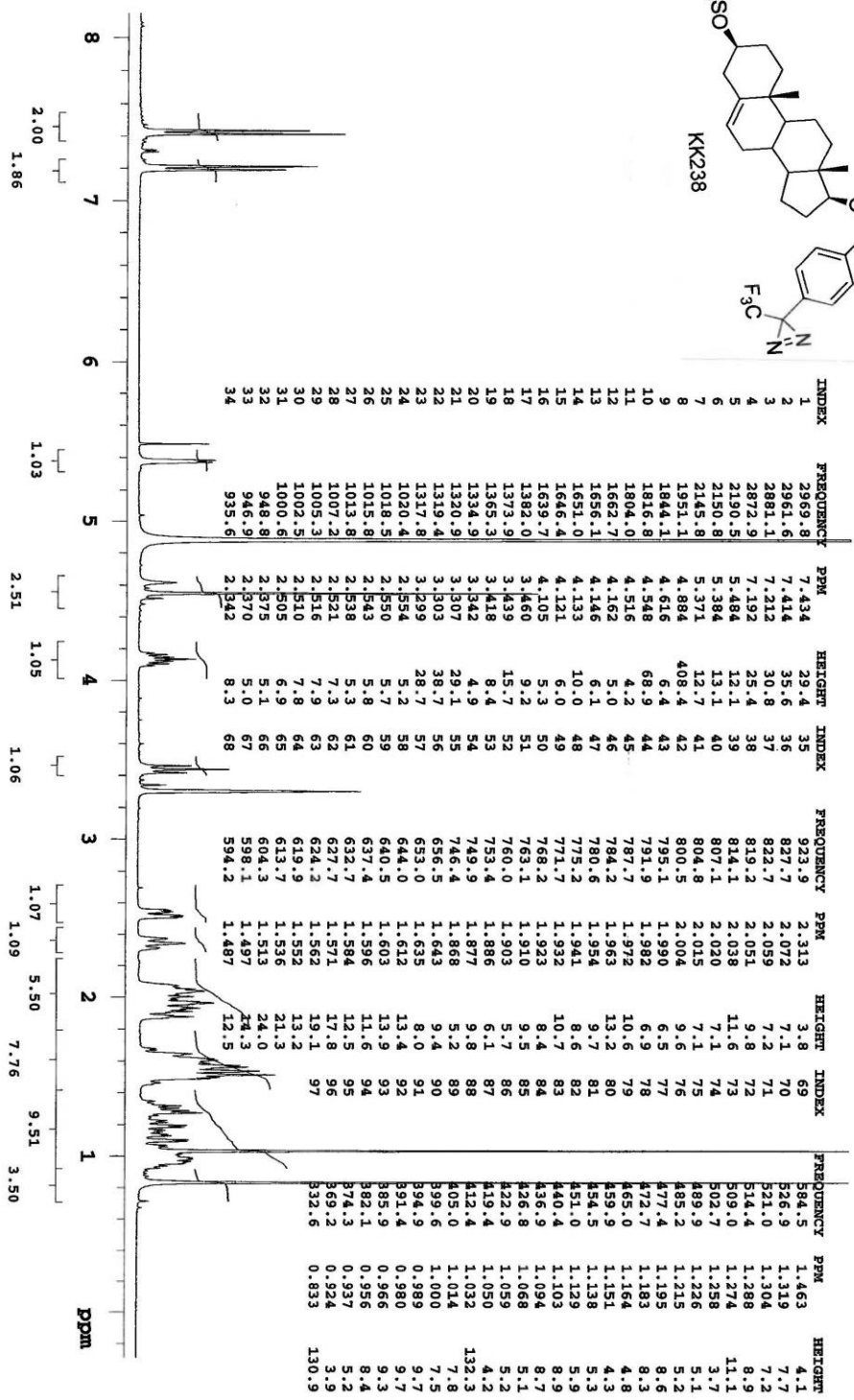
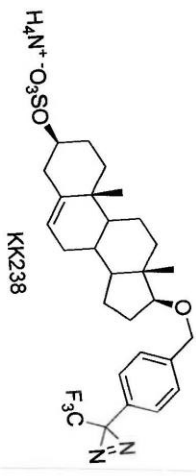
<sup>d</sup>*Taylor Family Institute for Innovative Psychiatric Research, Washington University in St. Louis, 660 S. Euclid Ave., St. Louis, MO, 63110, USA*

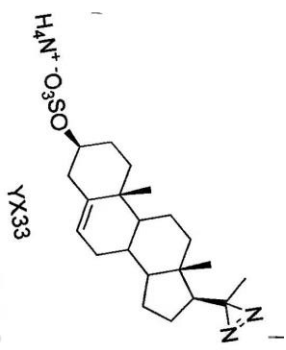
<sup>e</sup>*Department of Anesthesiology, Union Hospital, Tongji Medical College, Huazhong University of Science and Technology, Wuhan, 430022, China*

<sup>f</sup>*Key Laboratory of Anesthesiology and Resuscitation (Huazhong University of Science and Technology), Ministry of Education, China*

**Table of Contents**

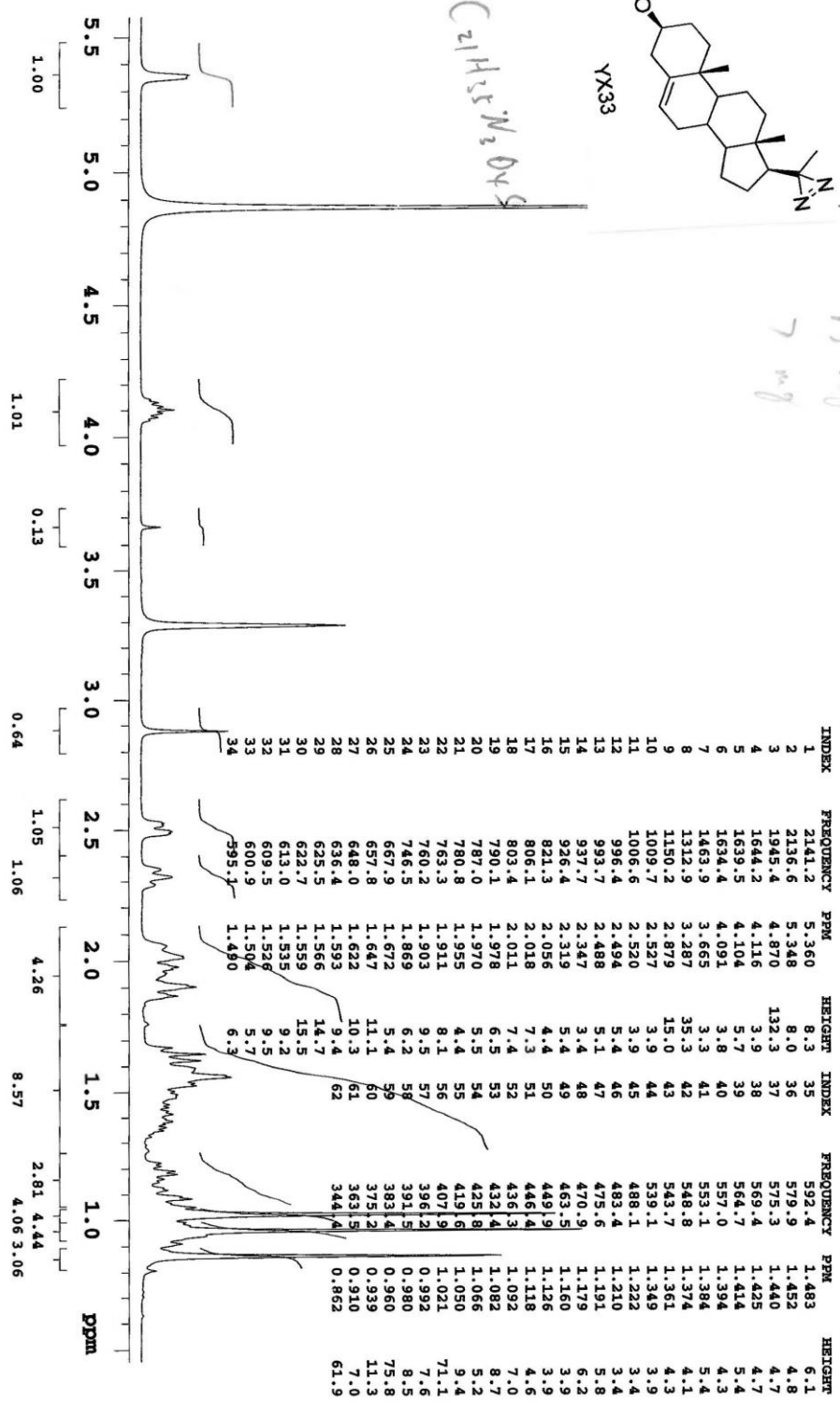
<sup>1</sup> H NMR (400 MHz) spectra for compounds <b>KK238, YX33, MQ189, MQ231, MQ234, MQ235, MQ236, MQ237, MQ271, MQ273</b> .....	S2-S11
<sup>13</sup> C NMR (100 MHz) spectra for compounds <b>KK238, YX33, MQ189, MQ231, MQ234, MQ235, MQ236, MQ237, MQ271, MQ273</b> .....	S12-S21

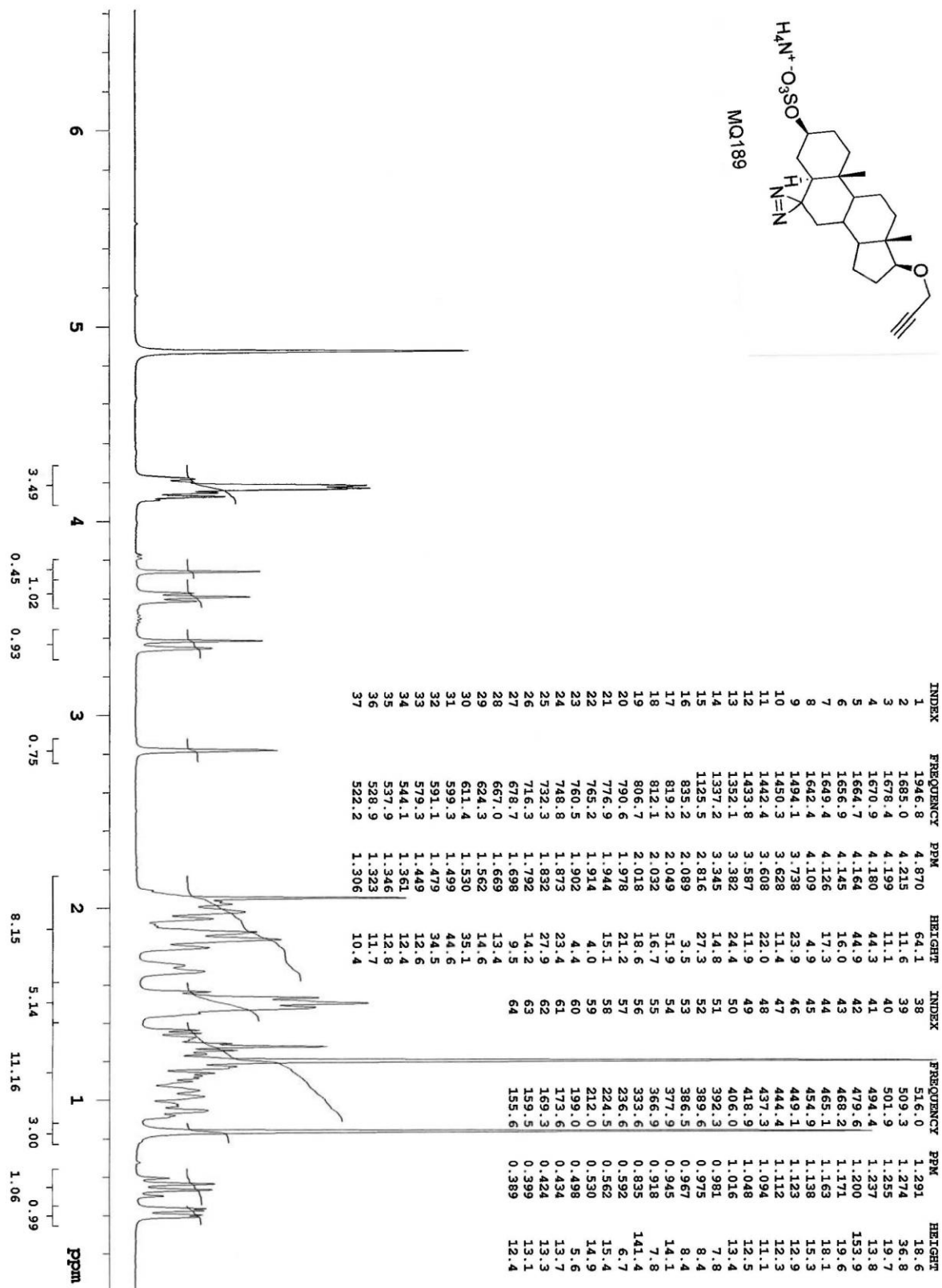
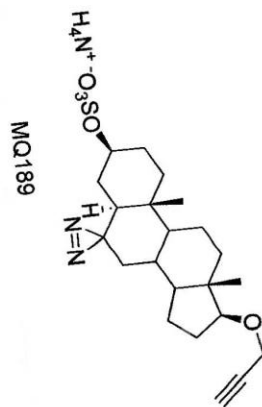


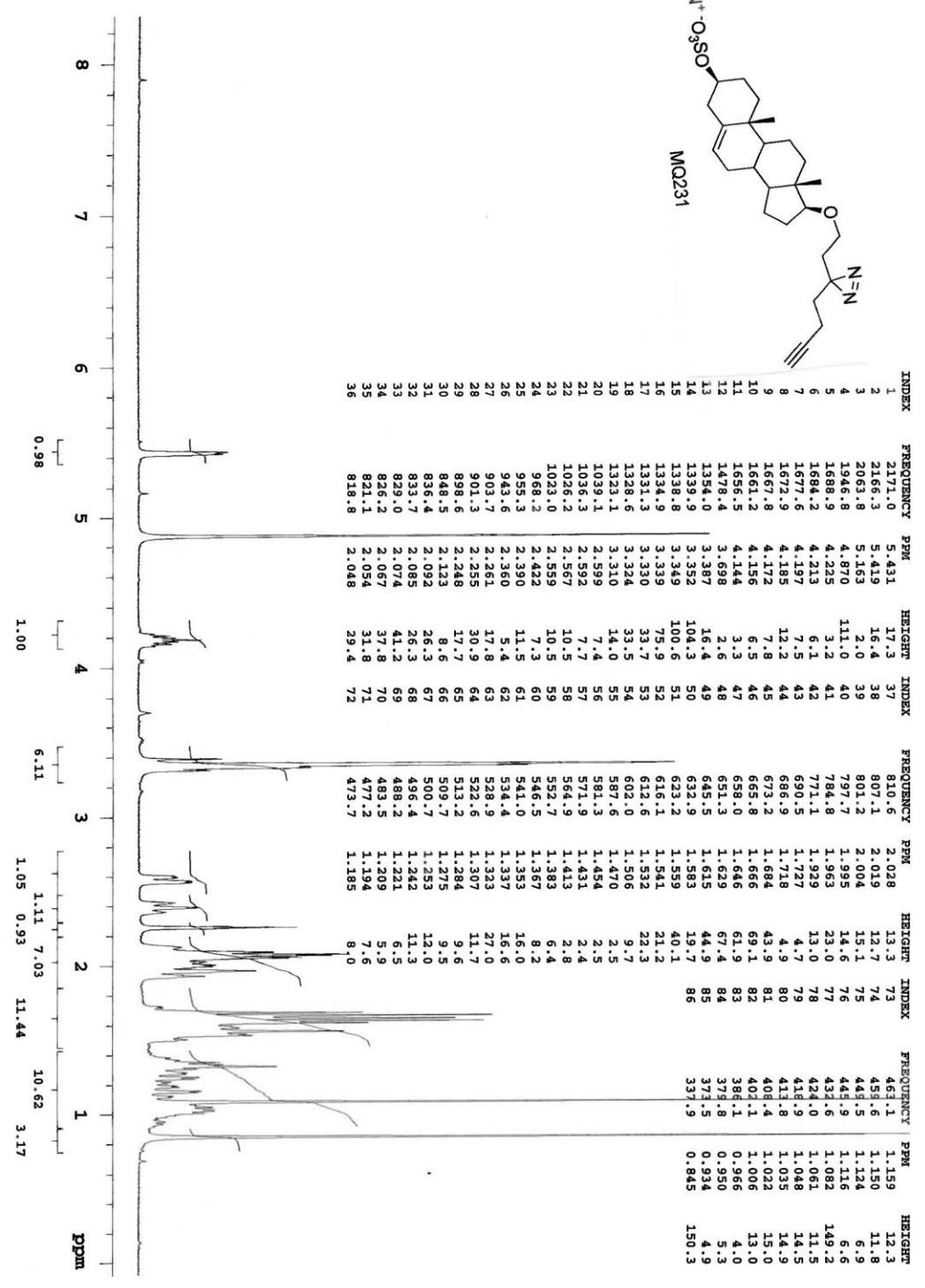
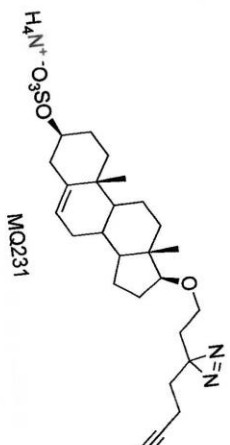


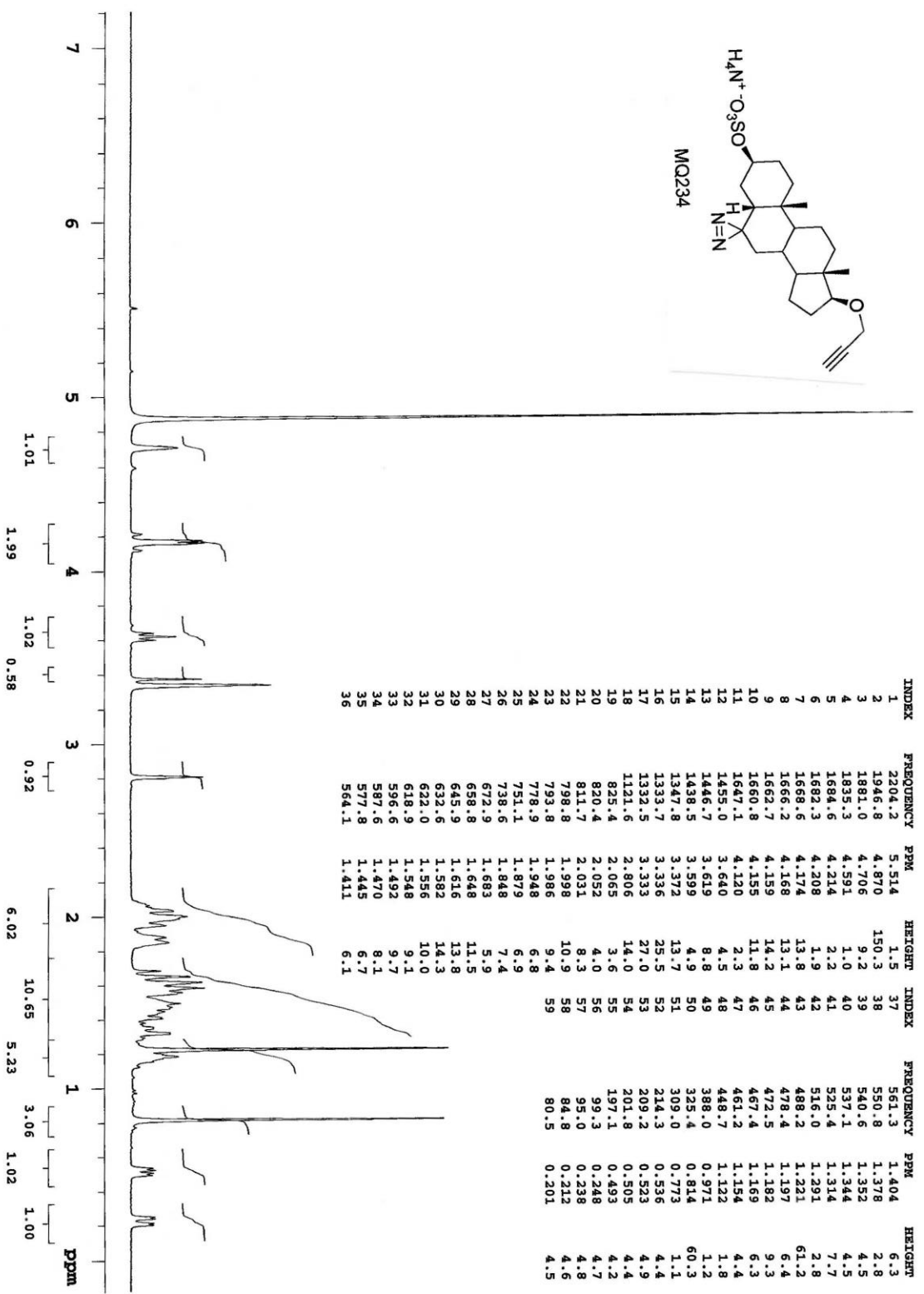
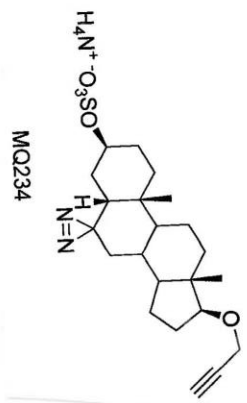
8m 7  
Cm 51

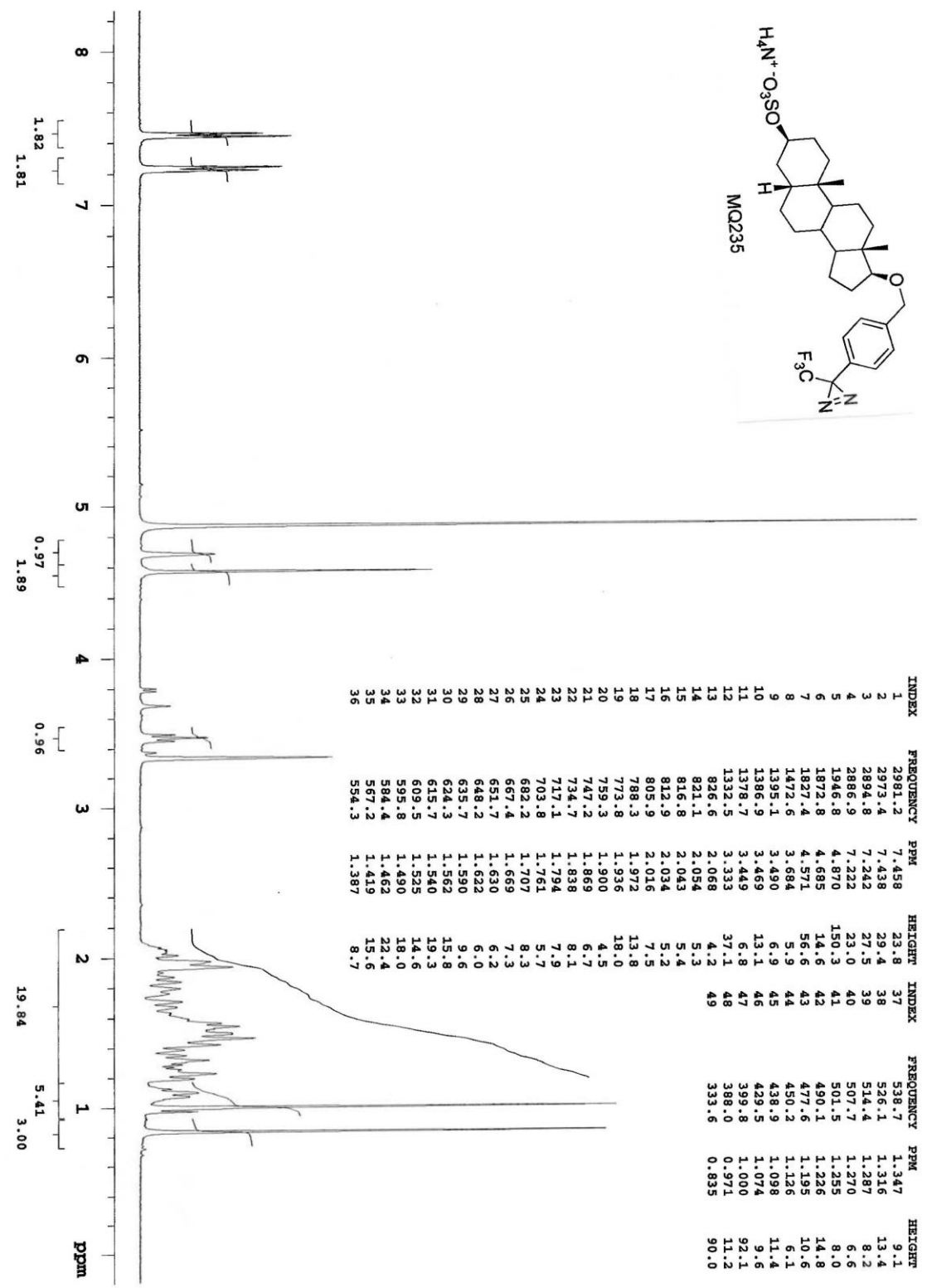
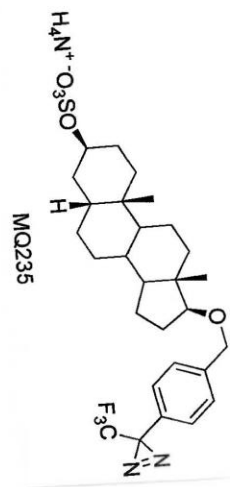
$C_{21}H_{35}N_2O_4S$

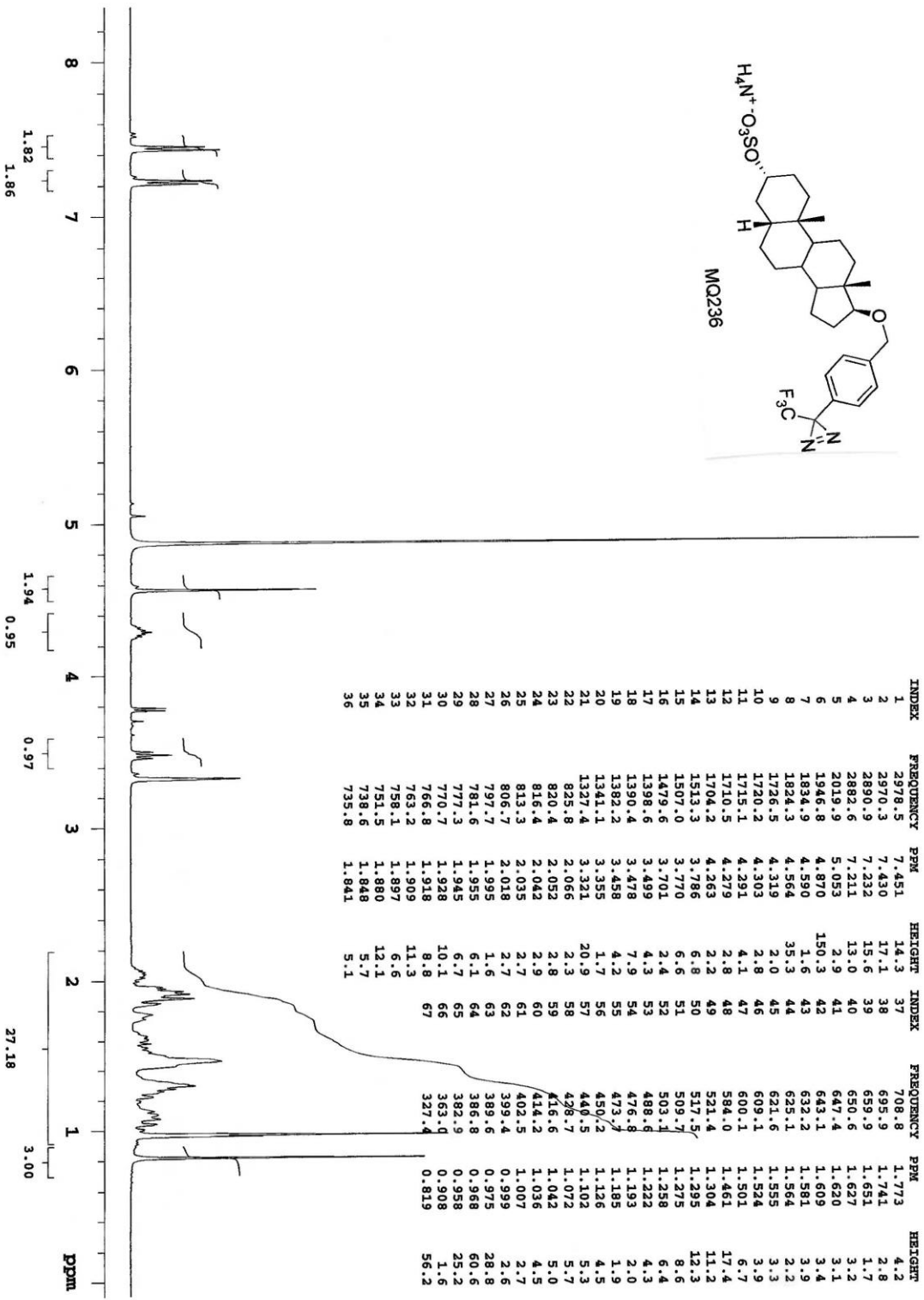
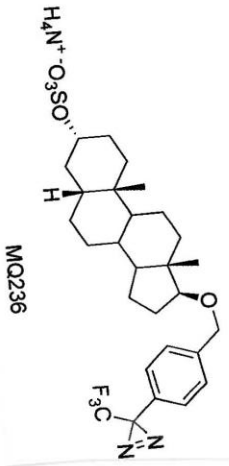




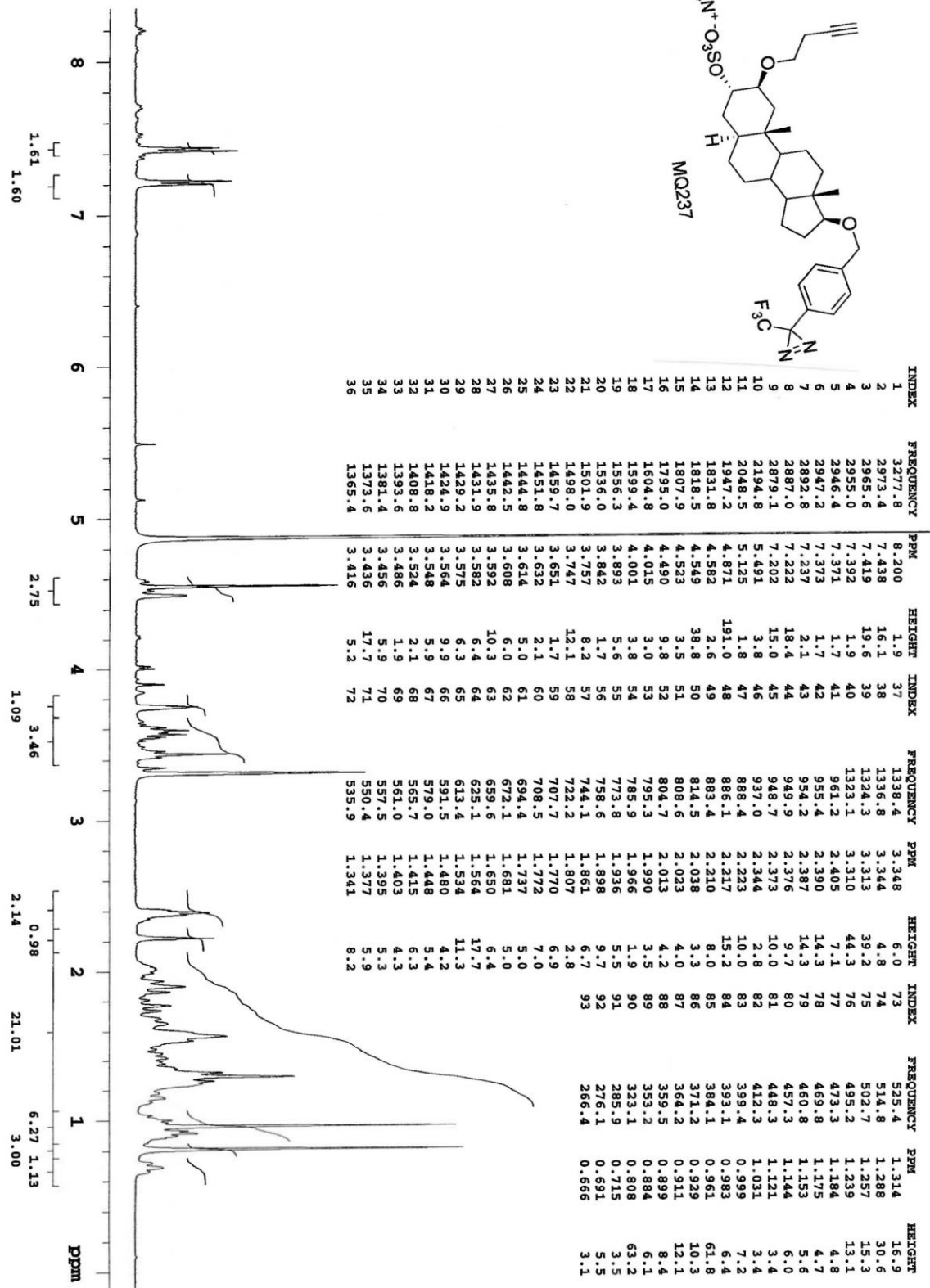
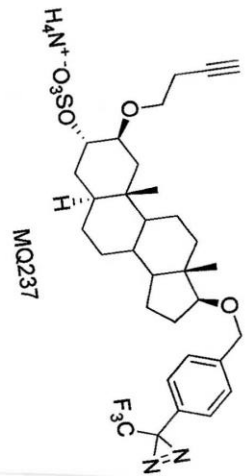




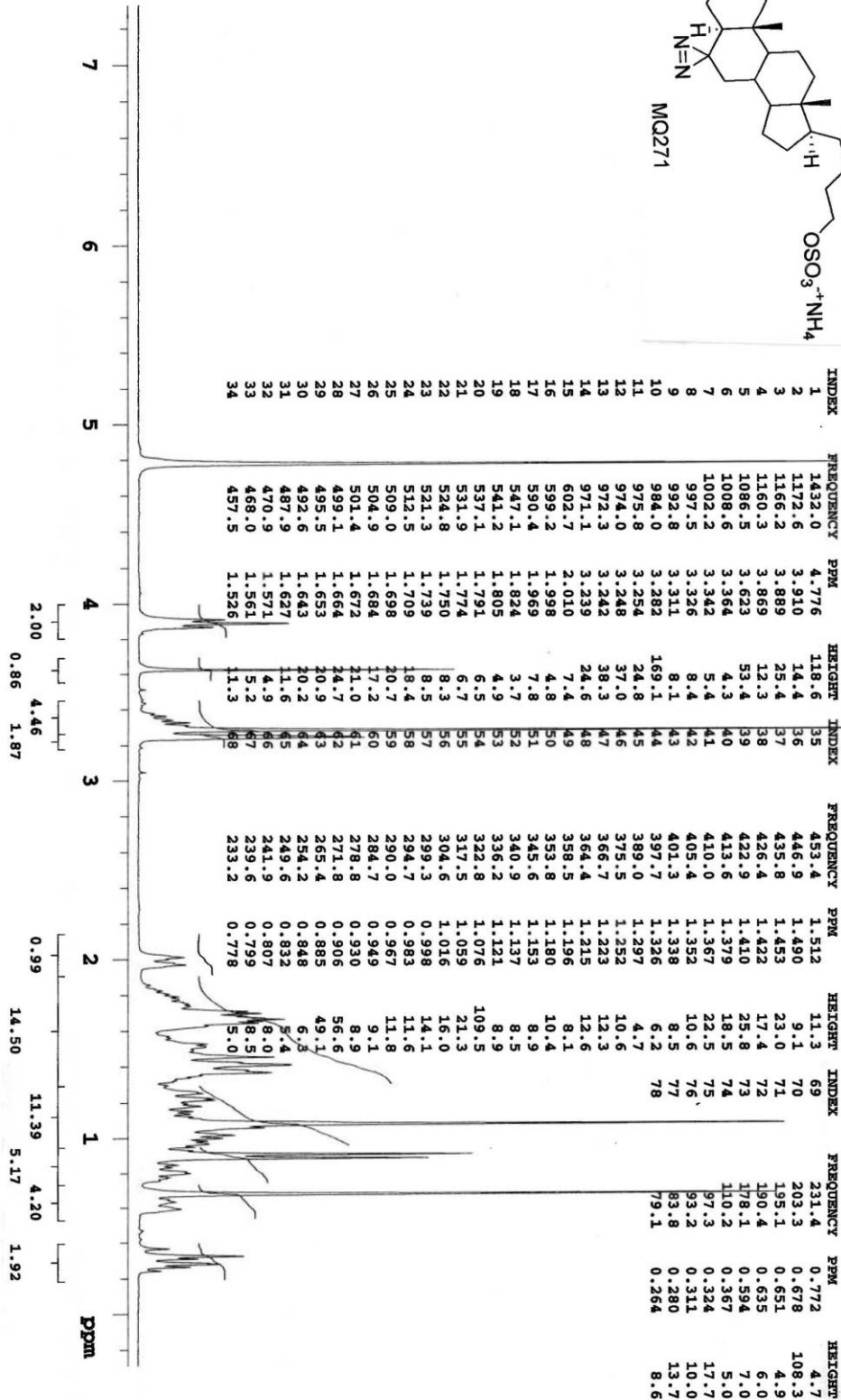
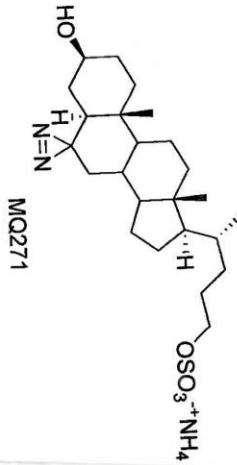


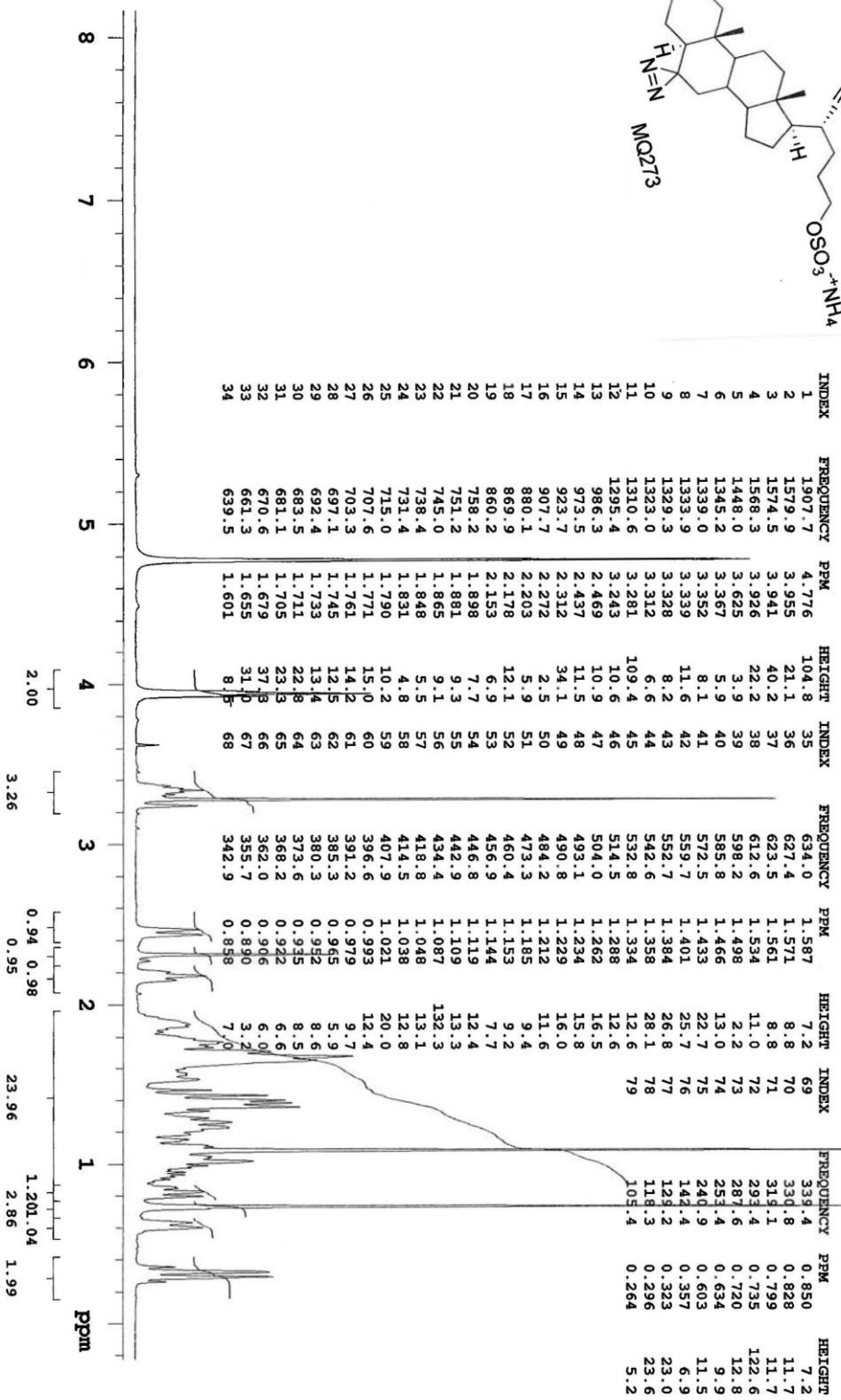
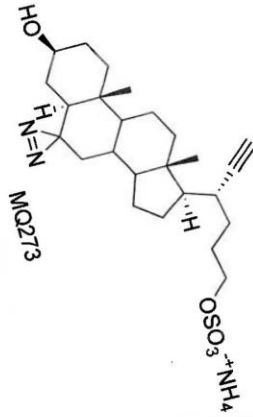


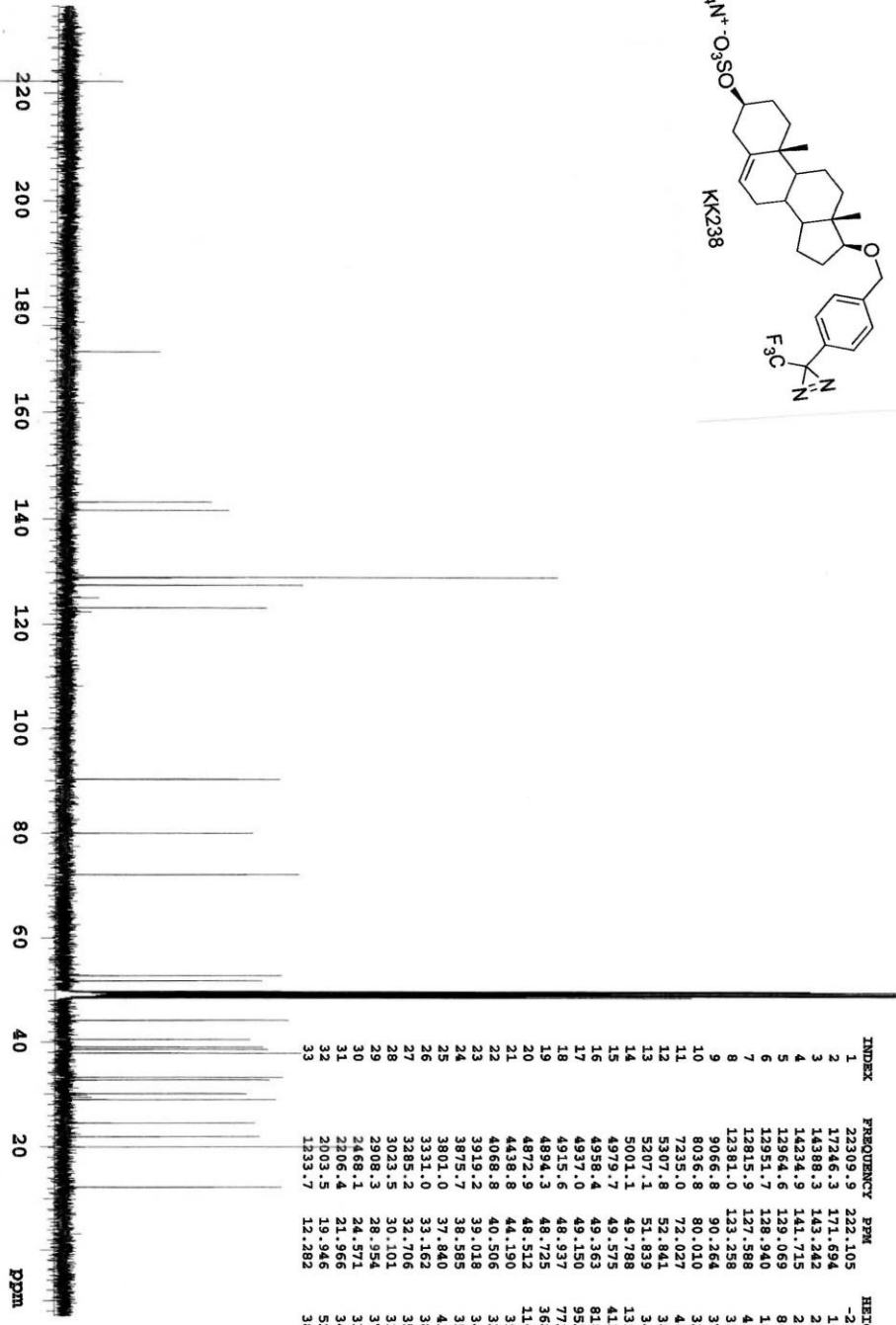
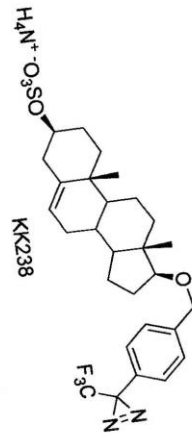


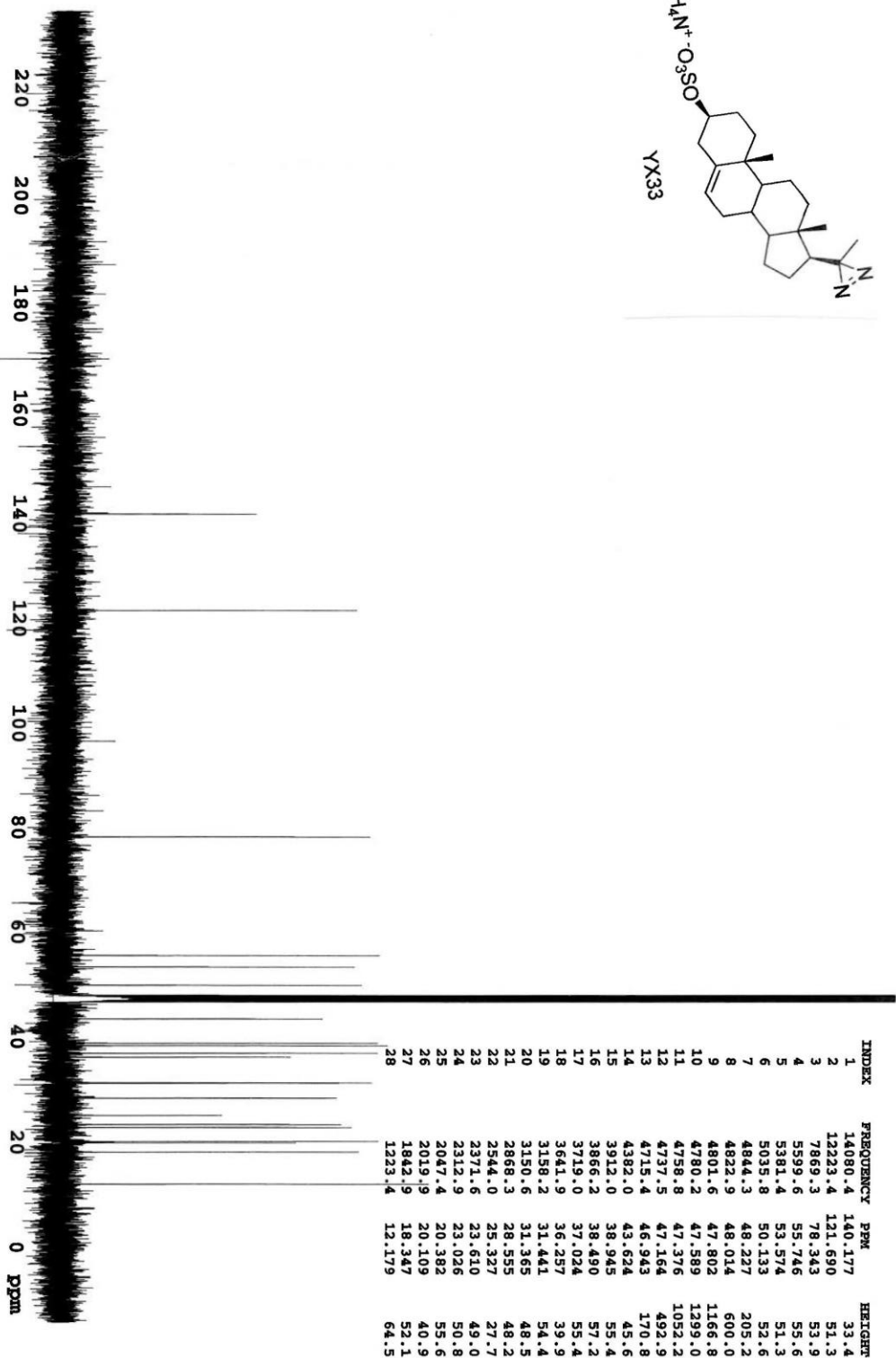
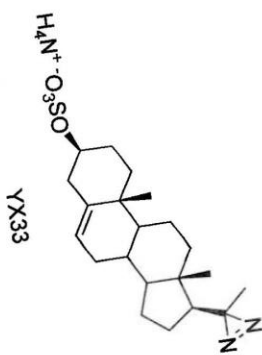


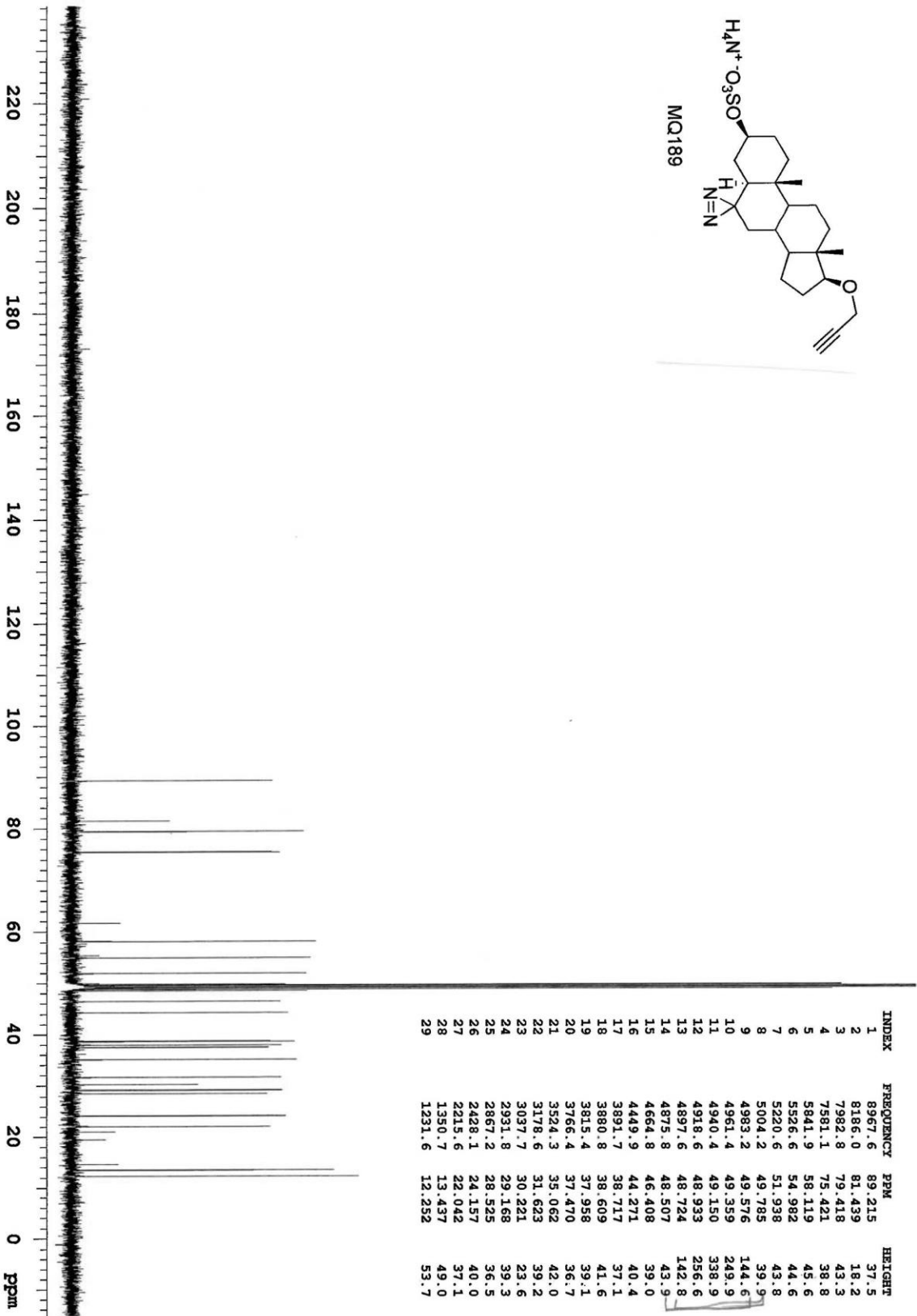
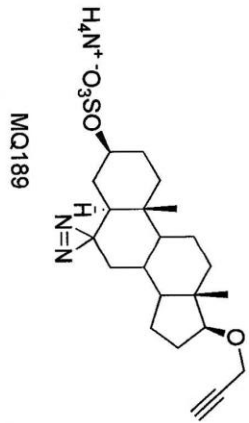
INDEX	FREQUENCY	PPM	HEIGHT	INDEX	FREQUENCY	PPM	HEIGHT	INDEX	FREQUENCY	PPM	HEIGHT
1	3277.8	8.200	1.9	37	1338.4	3.348	6.0	73	525.4	1.314	16.9
2	2973.4	7.438	16.1	38	1336.8	3.344	4.8	74	514.8	1.288	30.6
3	2965.6	7.419	19.6	39	1324.3	3.313	39.2	75	502.7	1.257	15.3
4	2955.0	7.392	1.9	40	1323.1	3.310	44.3	76	495.2	1.239	13.1
5	2946.4	7.371	1.7	41	961.2	2.405	7.1	77	473.3	1.184	4.8
6	2947.2	7.373	1.7	42	955.4	2.390	14.3	78	469.8	1.175	4.7
7	2892.8	7.237	2.1	43	954.2	2.387	14.3	79	460.8	1.155	5.6
8	2887.0	7.222	18.4	44	949.9	2.376	9.7	80	457.3	1.144	6.0
9	2879.1	7.202	15.0	45	948.7	2.373	10.0	81	448.3	1.121	3.4
10	2194.8	5.491	3.8	46	937.0	2.344	2.8	82	412.3	1.031	3.4
11	2048.5	5.125	1.8	47	888.4	2.223	10.0	83	399.4	0.999	7.2
12	1947.2	4.871	191.0	48	886.1	2.217	15.2	84	393.1	0.983	6.4
13	1831.8	4.582	2.6	49	883.4	2.210	8.0	85	384.1	0.961	61.8
14	1818.5	4.549	38.8	50	814.5	2.038	3.3	86	371.2	0.929	10.3
15	1807.9	4.523	3.5	51	808.6	2.023	4.0	87	364.2	0.911	12.1
16	1795.0	4.490	9.8	52	804.7	2.013	4.2	88	359.5	0.899	8.4
17	1604.8	4.015	3.0	53	795.3	1.990	3.5	89	353.2	0.884	6.1
18	1599.4	4.001	3.8	54	785.9	1.966	1.9	90	323.1	0.808	63.2
19	1556.3	3.893	5.6	55	773.8	1.936	5.5	91	285.9	0.715	3.5
20	1536.0	3.842	1.7	56	758.6	1.898	9.7	92	276.1	0.691	5.5
21	1501.9	3.757	8.2	57	744.1	1.861	6.7	93	266.4	0.666	3.1
22	1498.0	3.747	12.1	58	722.2	1.807	2.8				
23	1459.7	3.651	1.7	59	707.7	1.770	6.9				
24	1451.8	3.632	2.1	60	708.5	1.772	7.0				
25	1444.8	3.614	5.0	61	694.4	1.737	5.0				
26	1442.5	3.608	6.0	62	672.1	1.681	5.0				
27	1435.8	3.592	10.3	63	659.6	1.650	6.4				
28	1431.9	3.582	6.4	64	625.1	1.564	17.7				
29	1429.2	3.575	6.3	65	613.4	1.534	11.3				
30	1424.9	3.564	9.9	66	591.5	1.480	4.2				
31	1418.2	3.548	5.9	67	579.0	1.448	5.4				
32	1408.8	3.524	2.1	68	565.7	1.415	6.3				
33	1393.6	3.486	1.9	69	561.0	1.403	4.3				
34	1381.4	3.456	5.9	70	557.5	1.395	5.3				
35	1373.6	3.436	17.7	71	550.4	1.377	5.9				
36	1365.4	3.416	5.2	72	535.9	1.341	8.2				

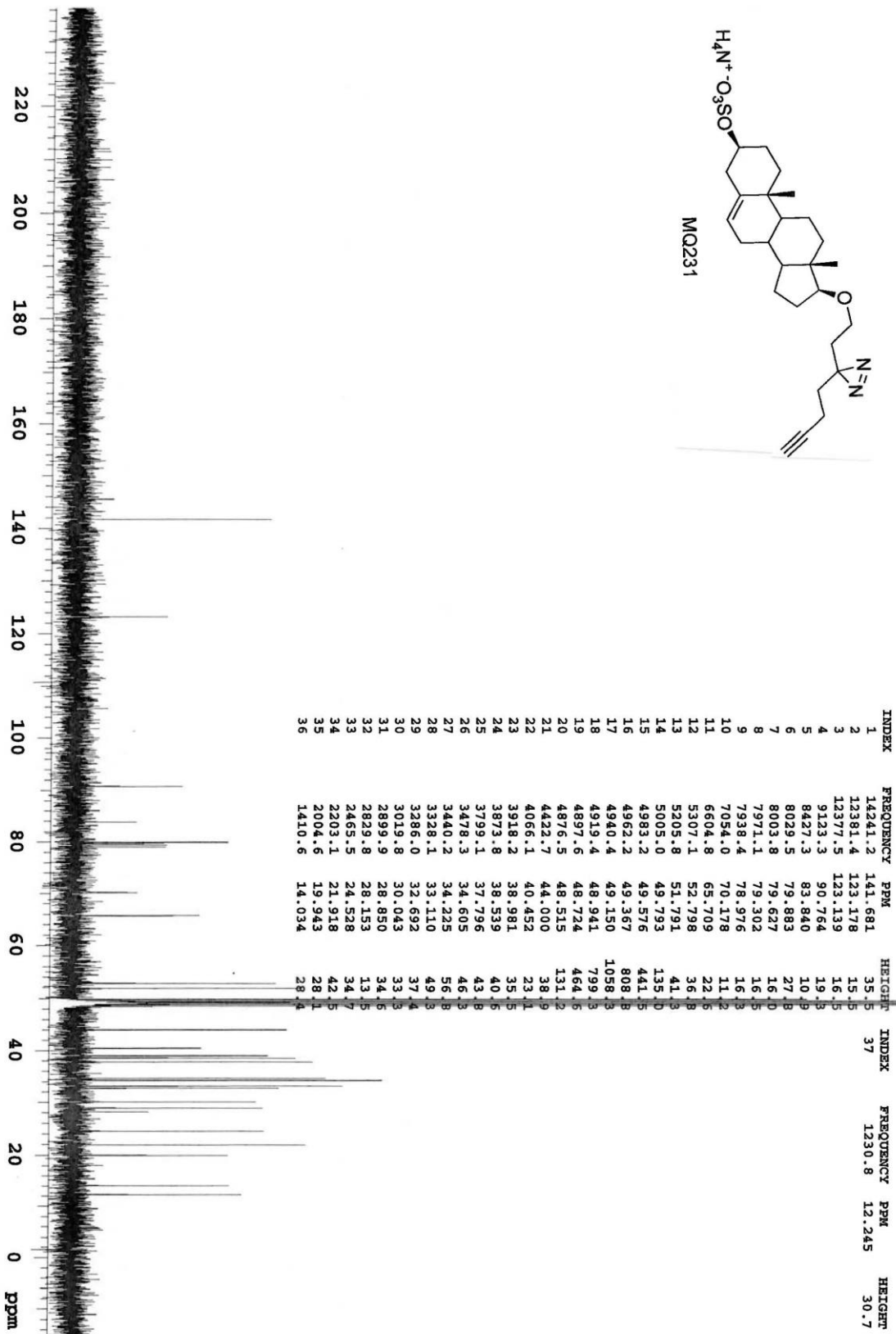
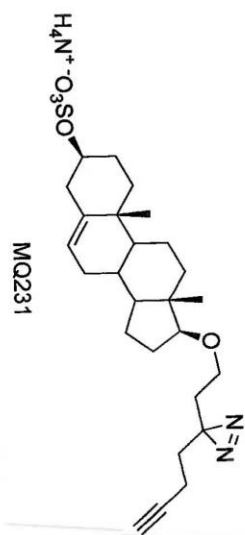


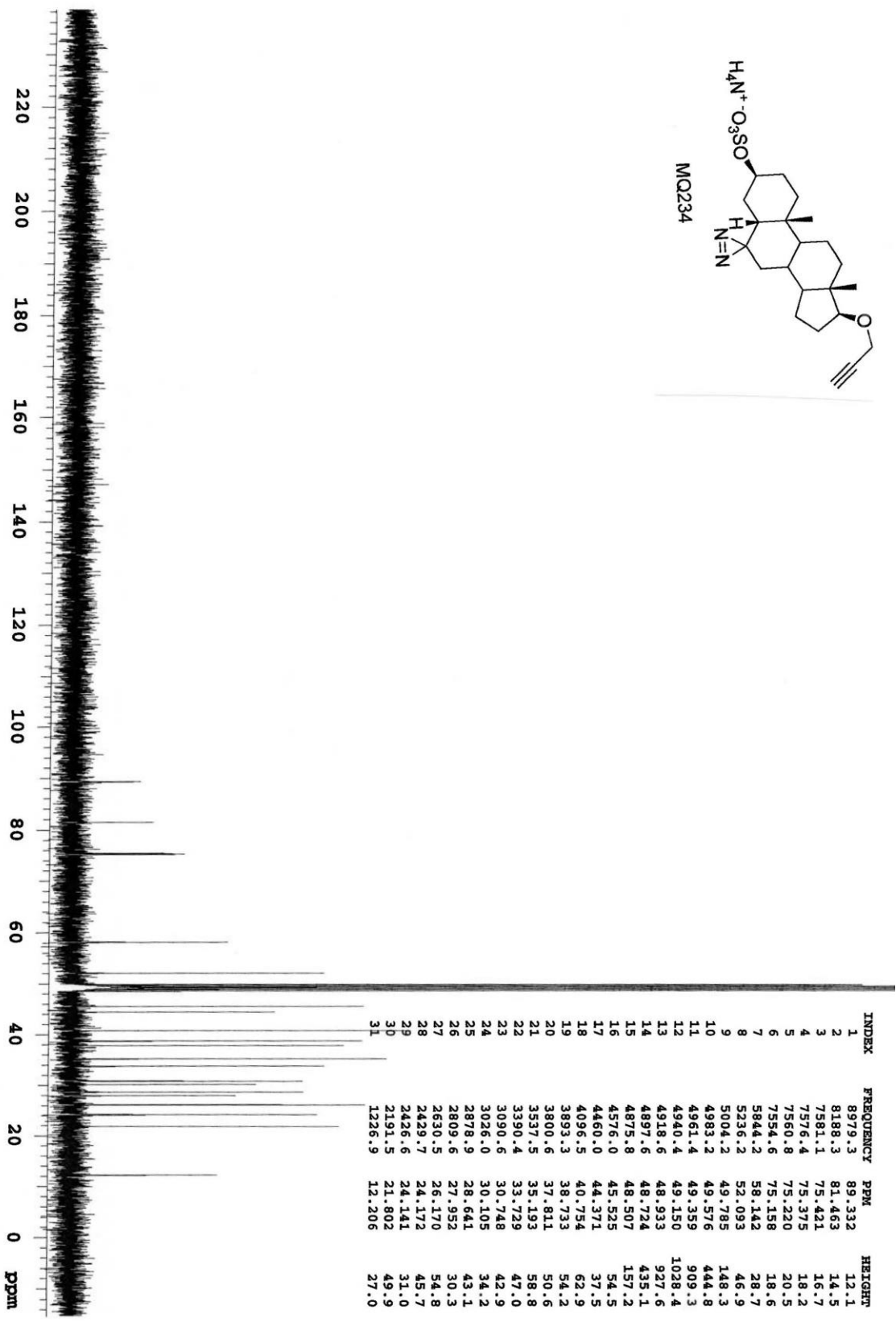
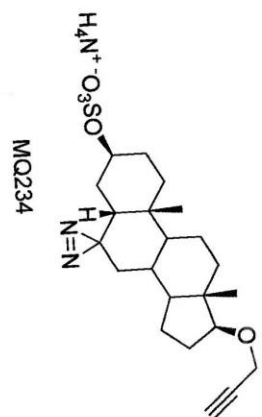




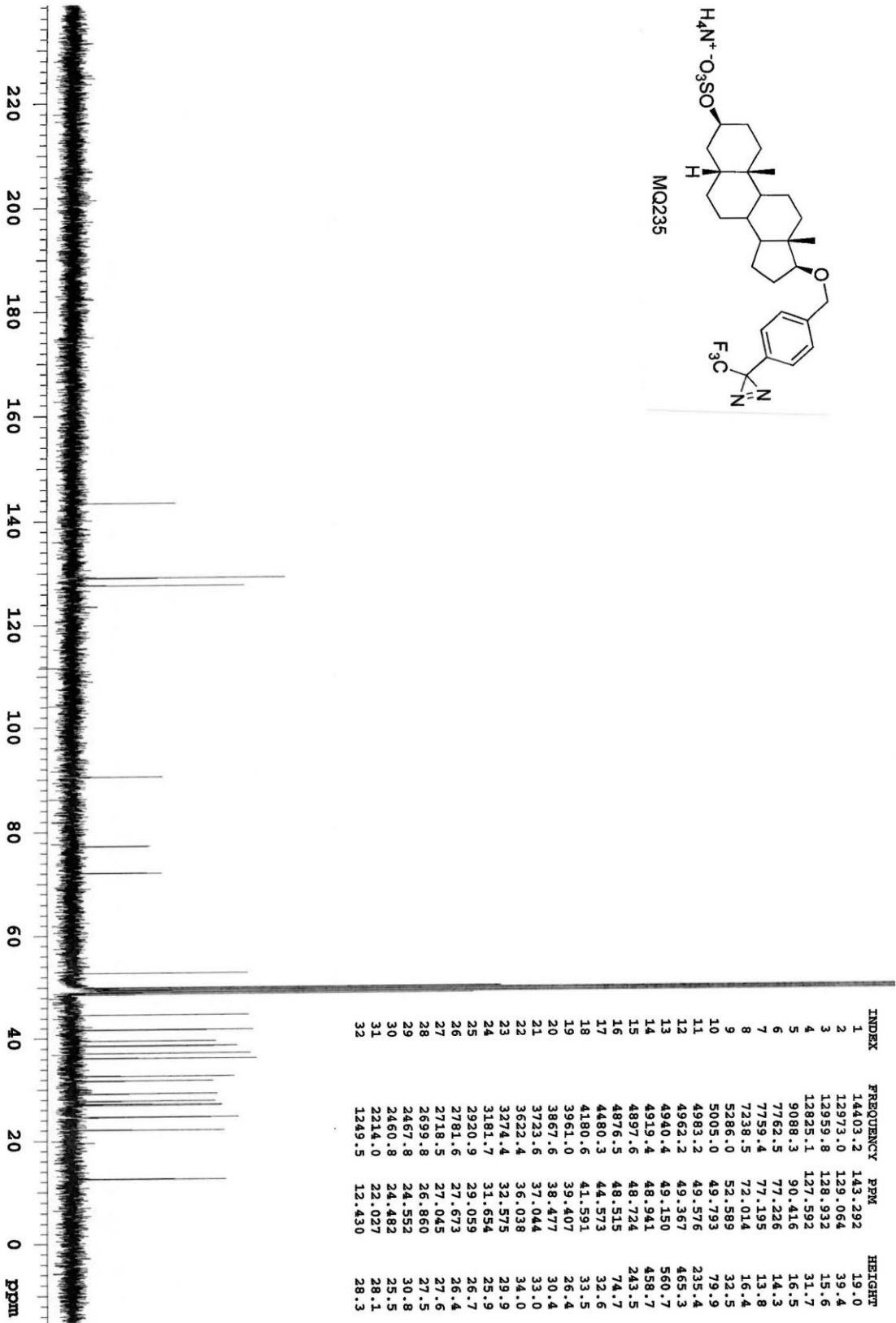
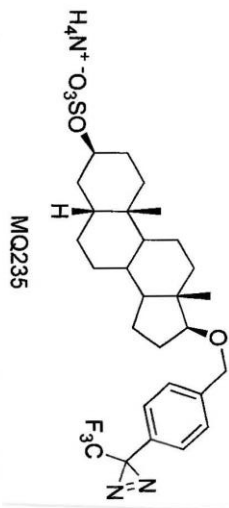












INDEX	FREQUENCY	PPM	HEIGHT
1	14403.2	143.292	19.0
2	12973.0	129.064	39.4
3	12859.8	128.932	15.6
4	12825.1	127.592	31.7
5	9088.3	90.416	16.5
6	7762.5	77.226	14.3
7	7759.4	77.195	13.8
8	7238.5	72.014	16.4
9	5286.0	52.589	32.5
10	5005.0	49.793	79.9
11	4983.2	49.576	233.4
12	4962.2	49.367	465.3
13	4940.4	49.150	560.7
14	4919.4	48.941	458.7
15	4897.6	48.724	243.5
16	4876.5	48.515	74.7
17	4480.3	44.573	32.6
18	4180.6	41.591	33.5
19	3961.0	39.407	26.4
20	3867.6	38.477	30.4
21	3723.6	37.044	33.0
22	3622.4	36.038	34.0
23	3274.4	32.575	29.9
24	3181.7	31.654	25.9
25	2920.9	29.059	26.7
26	2781.6	27.673	26.4
27	2718.5	27.045	27.6
28	2699.8	26.860	27.5
29	2467.8	24.552	30.8
30	2460.8	24.482	25.5
31	2214.0	22.027	28.1
32	1249.5	12.430	28.3

