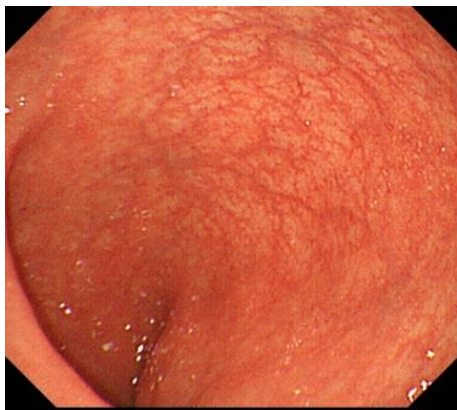
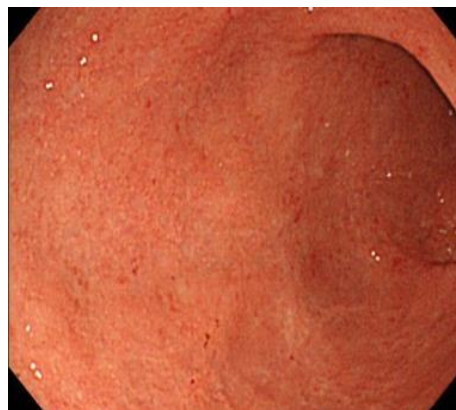


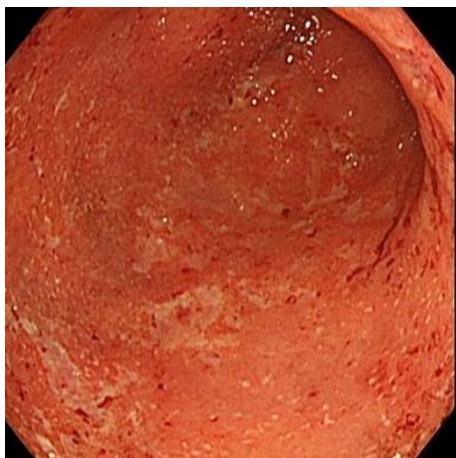
MES0



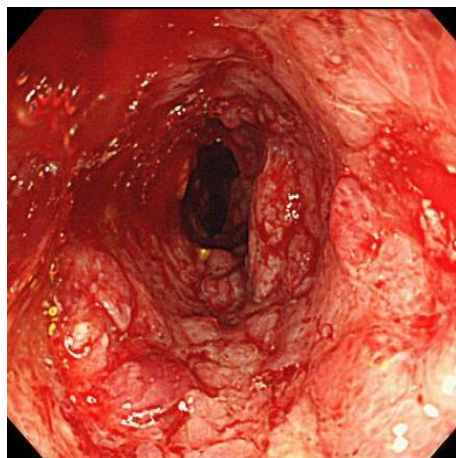
MES1



MES2

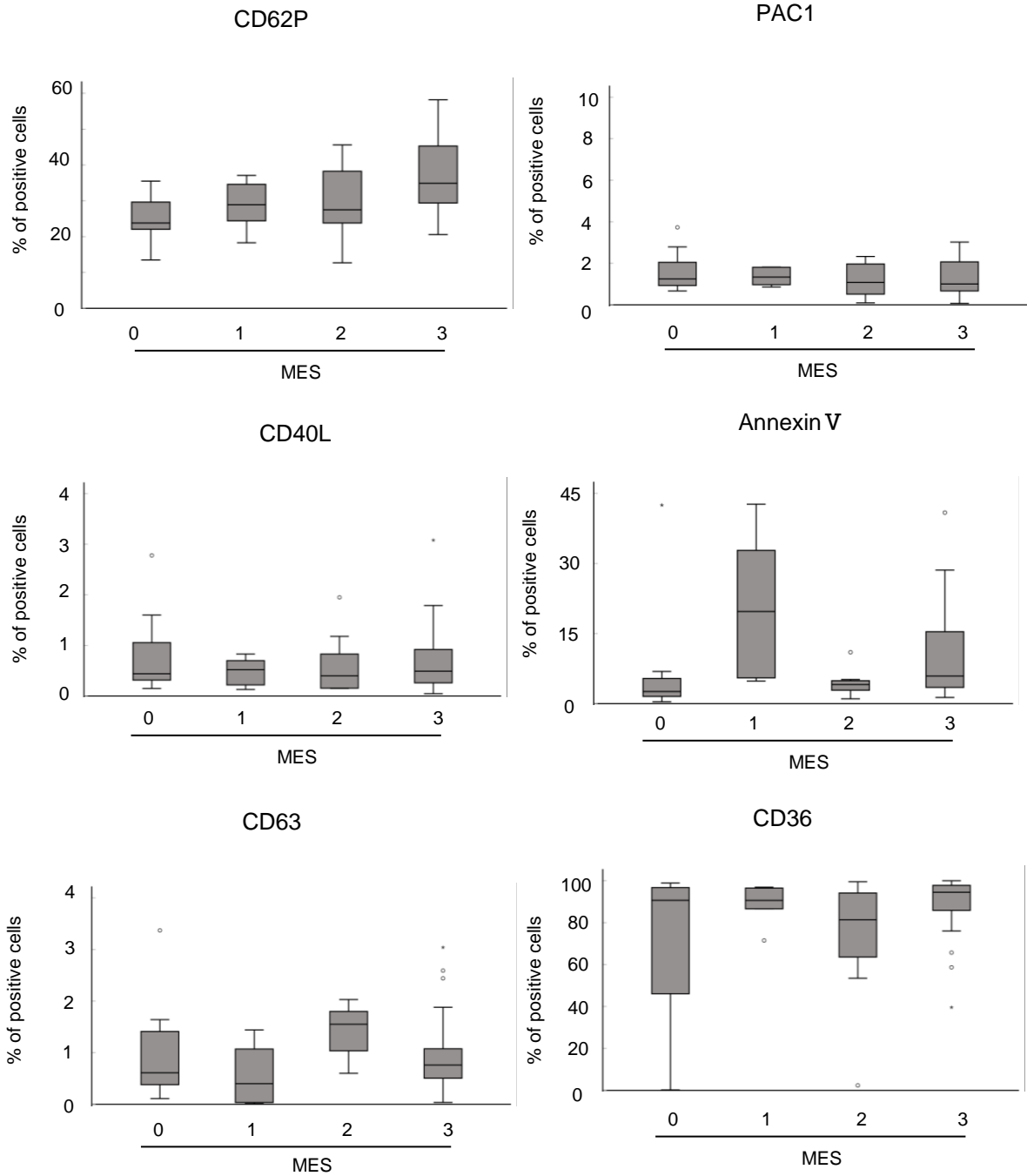


MES3

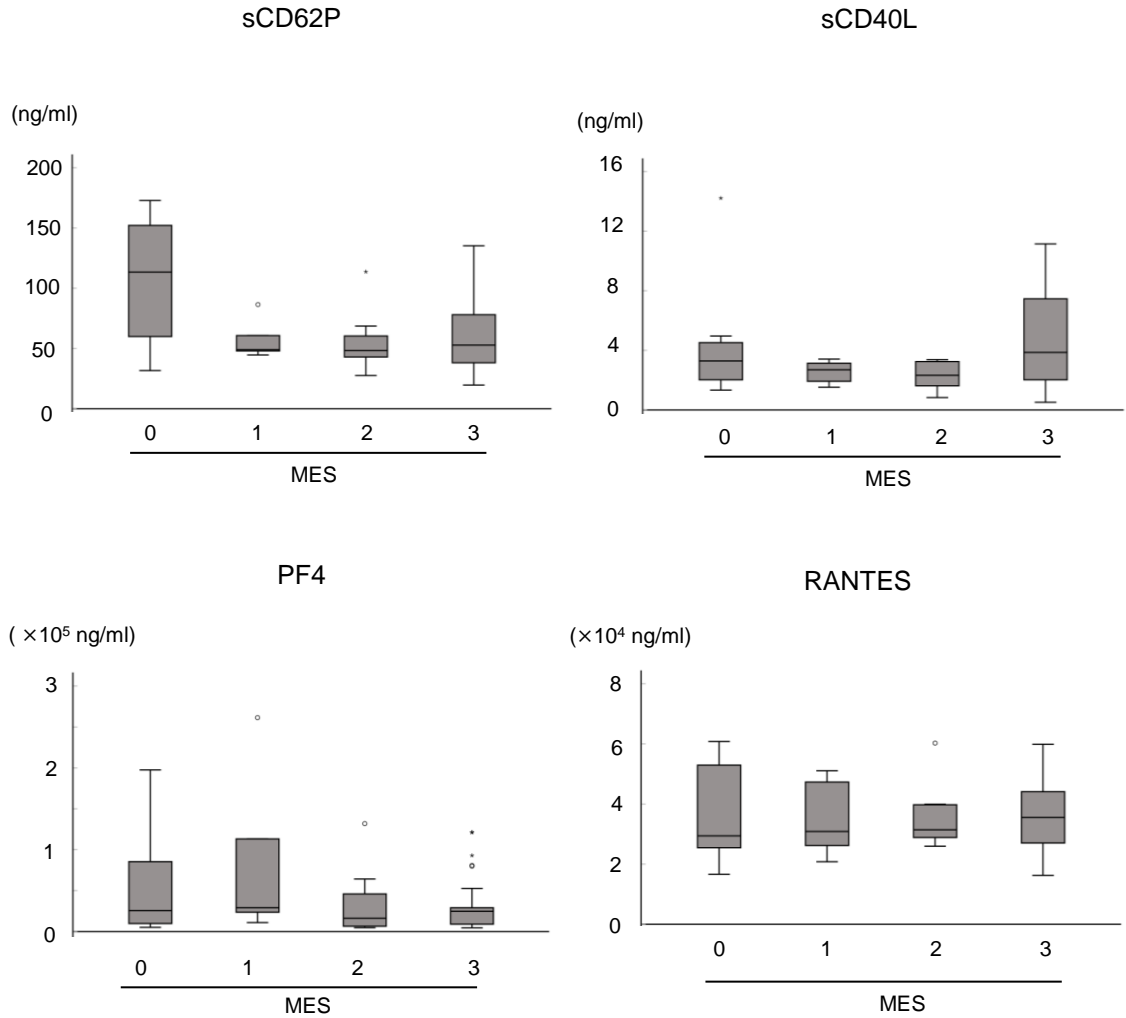


Supplementary Fig. S1. Mayo endoscopic subscore

Typical endoscopic findings in patients with Mayo endoscopic subscore (MES) of 0 (endoscopic remission), 1 (mild inflammation), 2 (moderate inflammation), and 3 (severe inflammation).



Supplementary Fig. S2. The expression of platelets activation markers in each MES
The endoscopic findings represented by MES (n=52) were compared with the expression of CD62P, CD40L, CD63, PAC1, annexin V, and CD36 in platelets collected on the day of colonoscopy.



Supplementary Fig. S3. The concentrations of platelet-derived soluble factors in each MES

The endoscopic findings represented by MES (n=52) were compared with the concentrations of sCD62P, sCD40L, PF4, and RANTES in the sera collected on the day of colonoscopy.