

Table S1. Incidence rates for females and males for each study year, separately for Localized+Regional and Distant Summary Stages

Summary Stage	Year	Incidence Rate (95% CI)	
		Female	Male
Localized or Regional	2001	34.9 (34.6-35.2)	48.1 (47.7-48.5)
	2002	34.2 (33.9-34.5)	47 (46.6-47.4)
	2003	33.3 (33-33.6)	46.1 (45.7-46.5)
	2004	32.6 (32.3-32.9)	45 (44.6-45.4)
	2005	31.8 (31.5-32.1)	43.3 (43-43.7)
	2006	31.1 (30.8-31.4)	41.4 (41-41.8)
	2007	30.2 (29.9-30.5)	40.8 (40.4-41.1)
	2008	29.3 (29.1-29.6)	39.2 (38.9-39.6)
	2009	27.9 (27.6-28.2)	37 (36.7-37.3)
	2010	26.6 (26.3-26.8)	34.9 (34.6-35.3)
	2011	25.8 (25.5-26)	34.1 (33.8-34.4)
	2012	25 (24.7-25.2)	33 (32.7-33.3)
	2013	24.4 (24.2-24.6)	32.2 (31.9-32.5)
	2014	24.5 (24.3-24.7)	32 (31.7-32.3)
	2015	24.3 (24.1-24.5)	31.8 (31.5-32.1)
	2016	24.2 (24-24.4)	30.7 (30.5-31)
	2017	23.5 (23.2-23.7)	30.3 (30.1-30.6)
	2018	23.2 (23-23.4)	29.6 (29.3-29.9)
	2019	22.7 (22.5-23)	29.6 (29.3-29.9)
	2020	19.8 (19.6-20)	25.3 (25.1-25.5)
Distant	2001	7.7 (7.5-7.8)	10.9 (10.7-11.1)
	2002	7.6 (7.5-7.8)	10.7 (10.5-10.9)
	2003	7.9 (7.8-8.1)	10.7 (10.5-10.9)
	2004	7.9 (7.8-8.1)	10.7 (10.6-10.9)
	2005	7.8 (7.7-8)	10.6 (10.4-10.7)
	2006	7.8 (7.7-8)	10.3 (10.1-10.4)
	2007	7.7 (7.5-7.8)	10.1 (9.9-10.2)
	2008	7.5 (7.4-7.7)	10.1 (9.9-10.3)
	2009	7.4 (7.2-7.5)	9.7 (9.6-9.9)
	2010	7.3 (7.2-7.4)	9.6 (9.4-9.8)
	2011	7.1 (7-7.2)	9.8 (9.6-9.9)
	2012	7.1 (7-7.2)	9.5 (9.3-9.6)
	2013	7.2 (7.1-7.4)	9.8 (9.6-9.9)
	2014	7.2 (7.1-7.3)	9.7 (9.5-9.8)
	2015	7.1 (7-7.3)	9.5 (9.4-9.7)
	2016	7 (6.9-7.1)	9.3 (9.2-9.5)
	2017	6.8 (6.6-6.9)	9.1 (9-9.3)
	2018	6.7 (6.6-6.8)	9.4 (9.3-9.6)
	2019	6.8 (6.7-6.9)	9.4 (9.2-9.5)
	2020	6.4 (6.2-6.5)	8.8 (8.6-8.9)

NOTES:

Rates are per 100,000 and age-adjusted to the 2000 US Std Population (19 age groups - Census P25-1130) standard; Confidence intervals (Tiwari 2006 mod) are 95% for rates.

Table S2. Incidence rates for racial/ethnic groups, estimated separately for Localized+Regional and Distant Summary Stages

Summary Stage	Year	Incidence Rate (95% CI)				
		AIAN	API	Hispanic	NHB	NHW
Localized or Regional	2001	30.5 (27.5-33.8)	32.5 (31.2-33.9)	32.4 (31.5-33.4)	42.3 (41.4-43.1)	41.3 (41-41.6)
	2002	31.2 (28.2-34.5)	32 (30.8-33.3)	31.3 (30.5-32.2)	42.2 (41.3-43)	40.4 (40.1-40.6)
	2003	33.3 (30.1-36.6)	30.4 (29.2-31.6)	31.2 (30.4-32.1)	42.5 (41.7-43.4)	39.3 (39-39.6)
	2004	29.9 (27-33)	30.5 (29.4-31.7)	32.2 (31.4-33)	41.8 (41-42.6)	38.4 (38.1-38.6)
	2005	29.5 (26.7-32.5)	29 (28-30.1)	30.7 (29.9-31.5)	40.4 (39.6-41.2)	37.3 (37.1-37.6)
	2006	32.3 (29.3-35.4)	29 (28-30.1)	30.4 (29.6-31.2)	39.9 (39.2-40.7)	35.9 (35.7-36.1)
	2007	32.6 (29.7-35.7)	28.2 (27.2-29.2)	29.9 (29.1-30.6)	38.8 (38-39.5)	35.2 (34.9-35.4)
	2008	29.9 (27.2-32.8)	28.2 (27.3-29.2)	29.1 (28.4-29.8)	38.3 (37.6-39)	33.9 (33.7-34.2)
	2009	29.3 (26.7-32.1)	26.4 (25.5-27.3)	28.2 (27.5-28.9)	36.5 (35.8-37.2)	32.1 (31.9-32.3)
	2010	29.4 (26.9-32.1)	25.8 (25-26.7)	26.2 (25.6-26.8)	35 (34.3-35.6)	30.4 (30.2-30.6)
	2011	29.6 (27.1-32.2)	25.5 (24.6-26.3)	25.9 (25.3-26.5)	33.5 (32.8-34.2)	29.7 (29.4-29.9)
	2012	27.9 (25.5-30.4)	24.1 (23.3-24.9)	24.6 (24-25.2)	31.9 (31.3-32.6)	29 (28.8-29.2)
	2013	28.5 (26.1-31)	23 (22.3-23.8)	24.5 (23.9-25)	31.5 (30.9-32.1)	28.3 (28-28.5)
	2014	27.4 (25.1-29.8)	22.7 (21.9-23.4)	24.6 (24-25.1)	30.8 (30.2-31.4)	28.4 (28.2-28.6)
	2015	30.5 (28.2-33)	22.3 (21.6-23.1)	24.4 (23.8-24.9)	30.5 (29.9-31.1)	28.3 (28-28.5)
	2016	30.2 (28-32.6)	22.5 (21.8-23.2)	23.6 (23.1-24.2)	28.9 (28.3-29.4)	27.9 (27.7-28.1)
	2017	28.8 (26.6-31.1)	21.9 (21.2-22.6)	23.4 (22.9-23.9)	28 (27.5-28.6)	27.4 (27.2-27.6)
	2018	27.4 (25.3-29.6)	21.2 (20.5-21.8)	23.1 (22.6-23.6)	28 (27.4-28.5)	26.8 (26.6-27.1)
	2019	25.8 (23.8-27.9)	20.7 (20.1-21.3)	22.5 (22-22.9)	27.3 (26.8-27.8)	26.8 (26.6-27)
	2020	23.2 (21.3-25.1)	17 (16.5-17.6)	19 (18.6-19.4)	23.1 (22.7-23.6)	23.4 (23.2-23.6)
Distant	2001	8.7 (7.1-10.5)	7 (6.4-7.6)	7.7 (7.3-8.2)	12.2 (11.8-12.7)	8.9 (8.8-9)
	2002	7.5 (6.1-9.2)	7.4 (6.8-8)	7.7 (7.3-8.1)	12.7 (12.3-13.2)	8.7 (8.6-8.8)
	2003	7.5 (6.1-9.1)	7.2 (6.6-7.8)	7.9 (7.5-8.3)	12.9 (12.4-13.3)	8.9 (8.8-9)
	2004	8 (6.6-9.7)	6.6 (6.1-7.2)	7.9 (7.5-8.3)	13.1 (12.6-13.5)	9 (8.8-9.1)
	2005	8.3 (6.8-9.9)	7.3 (6.8-7.9)	8 (7.6-8.4)	13.2 (12.8-13.7)	8.7 (8.6-8.9)
	2006	7.5 (6.2-9)	6.8 (6.3-7.3)	8.4 (8-8.8)	12.8 (12.3-13.2)	8.6 (8.5-8.7)
	2007	9 (7.6-10.7)	6.8 (6.3-7.3)	7.6 (7.3-8)	12.6 (12.2-13)	8.5 (8.4-8.6)
	2008	8.9 (7.4-10.5)	6.7 (6.2-7.2)	7.7 (7.4-8.1)	12.3 (11.9-12.7)	8.5 (8.4-8.6)
	2009	8.7 (7.4-10.3)	6.7 (6.2-7.2)	7.5 (7.1-7.8)	12.2 (11.8-12.6)	8.2 (8.1-8.3)
	2010	9.1 (7.7-10.6)	6.7 (6.3-7.2)	7.2 (6.8-7.5)	11.6 (11.2-12)	8.2 (8.1-8.3)
	2011	8.3 (7-9.8)	6.3 (5.8-6.7)	7.6 (7.2-7.9)	11.3 (10.9-11.7)	8.2 (8.1-8.3)
	2012	8.4 (7.1-9.8)	5.8 (5.4-6.2)	7.3 (7-7.6)	11.7 (11.3-12)	8 (7.9-8.1)
	2013	9.2 (7.9-10.6)	6.3 (5.9-6.7)	7.3 (7-7.6)	11.7 (11.3-12)	8.3 (8.1-8.4)
	2014	9.3 (8-10.7)	6.5 (6.1-6.9)	7.3 (7-7.6)	11.6 (11.2-11.9)	8.2 (8.1-8.3)
	2015	9.1 (7.9-10.5)	6 (5.6-6.3)	7.3 (7-7.6)	11 (10.7-11.4)	8.2 (8.1-8.3)
	2016	10.4 (9.1-11.8)	5.9 (5.6-6.3)	7.3 (7-7.5)	11.1 (10.8-11.5)	7.9 (7.8-8)
	2017	9.8 (8.6-11.2)	5.6 (5.2-5.9)	7.3 (7.1-7.6)	10.4 (10.1-10.7)	7.8 (7.7-7.9)
	2018	8.4 (7.3-9.6)	5.6 (5.3-6)	7.1 (6.8-7.3)	10.5 (10.2-10.9)	8 (7.8-8.1)
	2019	8.6 (7.5-9.9)	6.1 (5.8-6.5)	7.1 (6.9-7.4)	10.6 (10.3-10.9)	8 (7.8-8.1)
	2020	8.5 (7.4-9.8)	5.7 (5.4-6)	6.6 (6.4-6.8)	9.5 (9.2-9.8)	7.5 (7.4-7.6)

NOTES:

Rates are per 100,000 and age-adjusted to the 2000 US Std Population (19 age groups - Census P25-1130) standard; Confidence intervals (Tiwari 2006 mod) are 95% for rates.

Figure S1. Trends in Localized or Regional and Distant summary stage CRC incidence rates, separately for females and males. Rates are per 100,000 and age-adjusted to the 2000 US Std Population (19 age groups - Census P25-1130) standard. Estimates were obtained from the results of the meta-regression linear models analyses.

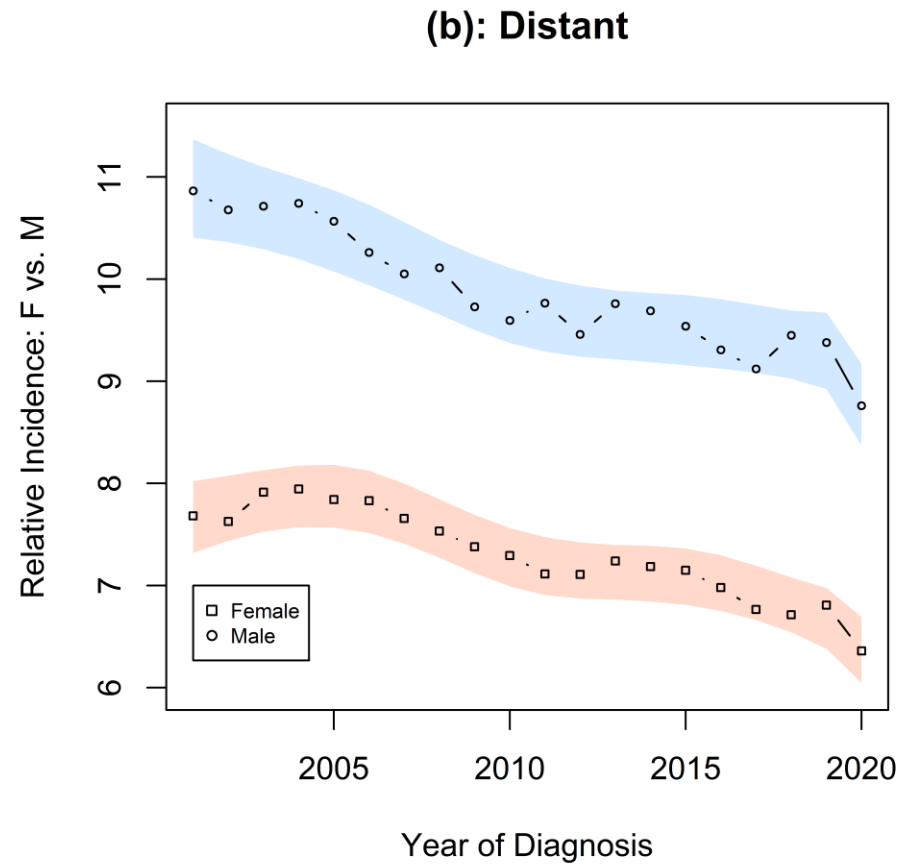
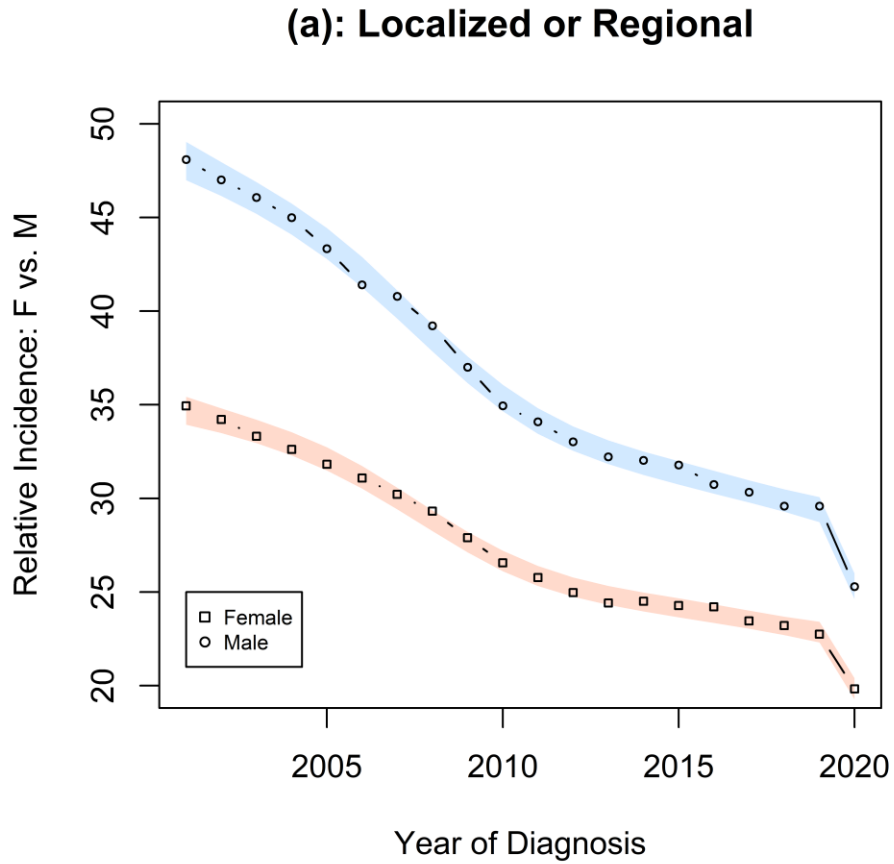


Figure S2. Trends in Localized or Regional and Distant summary stage CRC incidence rates, separately for different racial/ethnic groups. Rates are per 100,000 and age-adjusted to the 2000 US Std Population (19 age groups - Census P25-1130) standard. Estimates were obtained from the results of the meta-regression linear models analyses.

