

Figure S1. Study sample selection flowchart. The process of participant selection for the study, delineating the path to inclusion in exposed group (A) and control group (B).

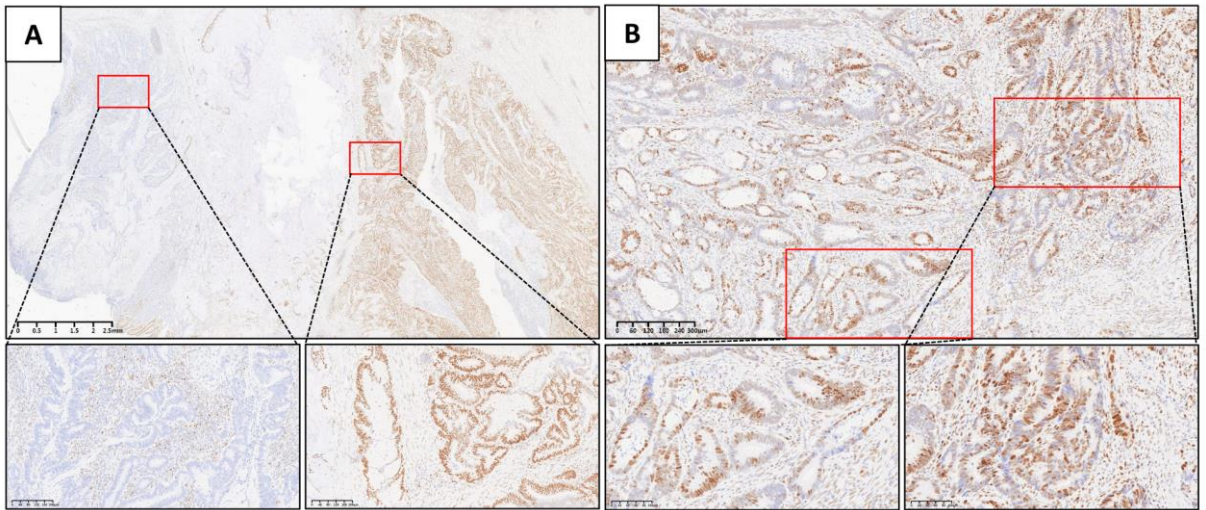


Figure S2. Heterogeneity in MSH6 expression. (A) Representative case demonstrating intra-tumoral heterogeneity of MSH6 expression in different regions of the same tumor. (B) Representative case showing cellular-level heterogeneity of MSH6 expression within the same glandular structure.