

Starvation-induced metabolic rewiring affects mTORC1 composition *in vivo*

Kaade, Edgar¹; Mausbach, Simone¹; Erps, Nina²; Sylvester, Marc^{1,3}; Shakeri, Farhad^{4,5}; Jachimowicz, Ron D.^{2,6,7}; Gieselmann, Volkmar¹; Thelen, Melanie^{1,2,6*}

¹ Institute for Biochemistry and Molecular Biology, Medical Faculty, Rheinische Friedrich-Wilhelms-University of Bonn, 53115 Bonn, Germany

² Max-Planck Institute for Biology of Ageing, 50931 Cologne, Germany

³ Core Facility Analytical Proteomics, Medical Faculty, Rheinische Friedrich-Wilhelms-University of Bonn, 53115 Bonn, Germany

⁴ Institute for Medical Biometry, Informatics and Epidemiology, Medical Faculty, University of Bonn, Venusberg-Campus 1, 53127 Bonn, Germany

⁵ Institute for Genomic Statistics and Bioinformatics, Medical Faculty, University of Bonn, Venusberg-Campus 1, 53127 Bonn, Germany

⁶ Department I of Internal Medicine, Center for Integrated Oncology Aachen Bonn Cologne Duesseldorf (CIO ABCD), University of Cologne, Cologne, Germany

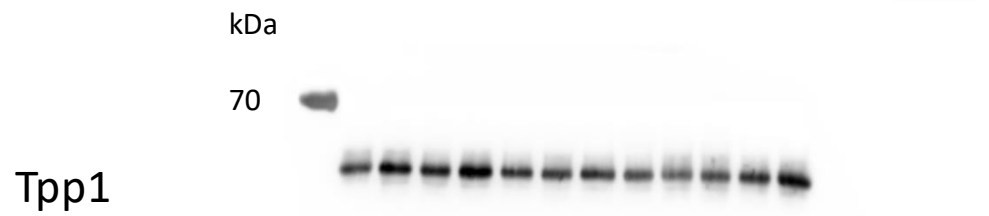
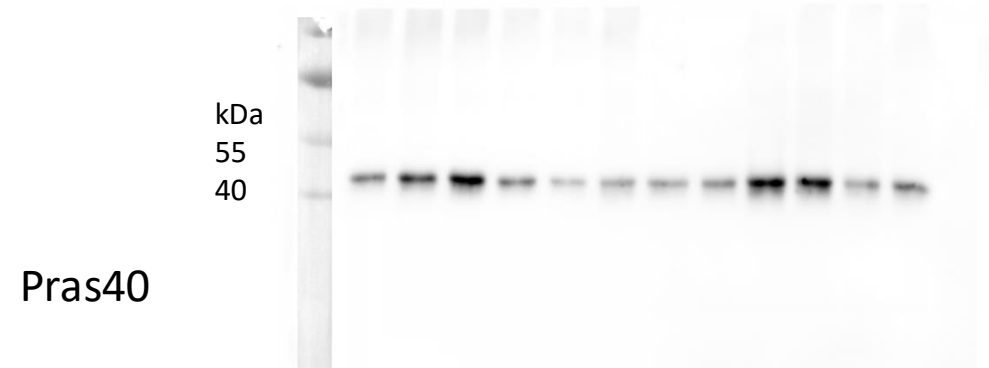
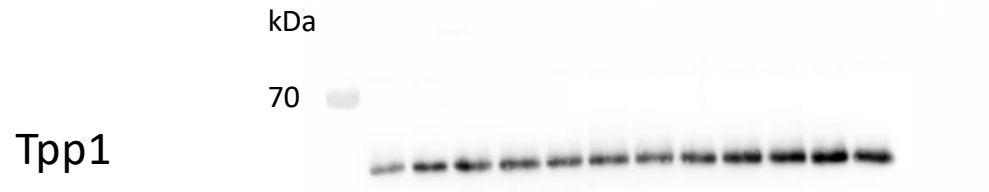
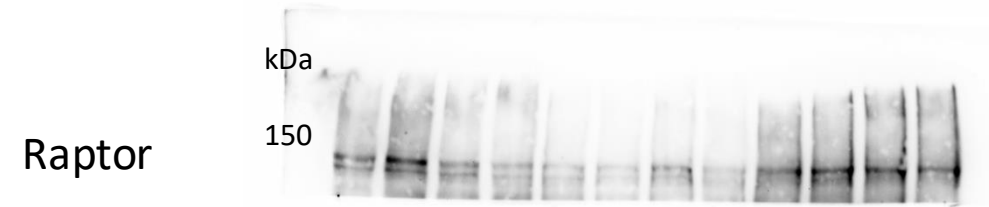
⁷ Cologne Excellence Cluster on Cellular Stress Response in Aging-Associated Diseases, University of Cologne, Cologne, Germany

Supplementary Information – Western Blot full data

All Western Blot were developed with Fusion Chemiluminescence developer (Vilber, France). Shown are mostly merged pictures of blot and size marker picture. Size of nearest marker band is indicated.

Figure 3

tritosomes



liver lysate

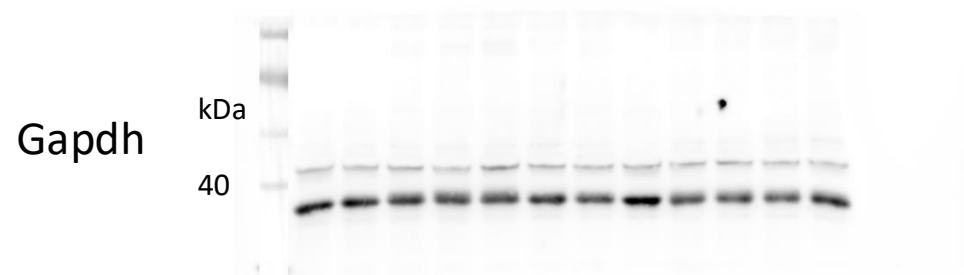
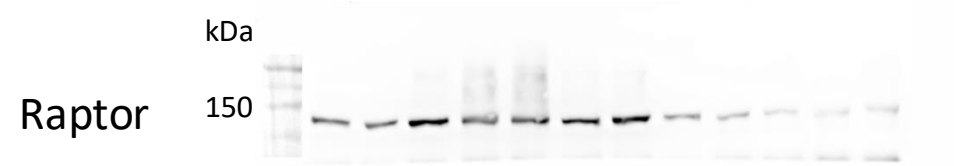
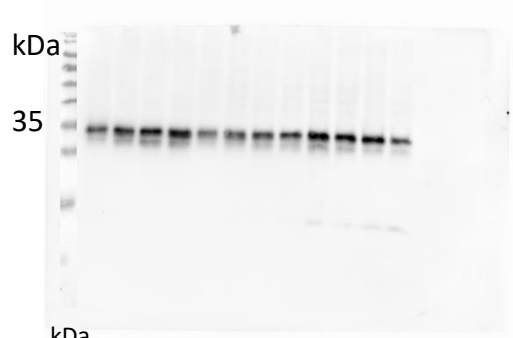


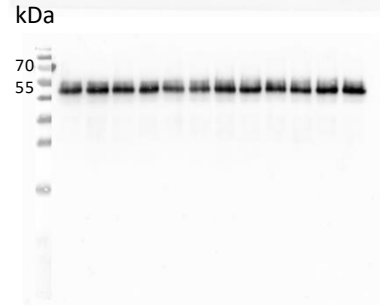
Figure 3

tritosomes

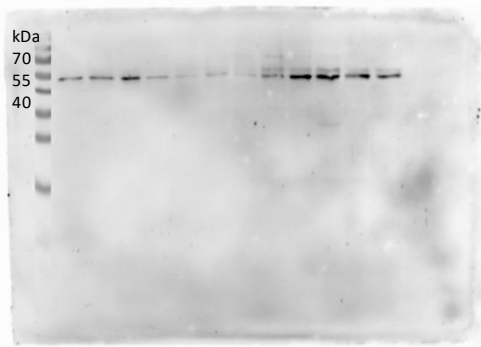
RagA



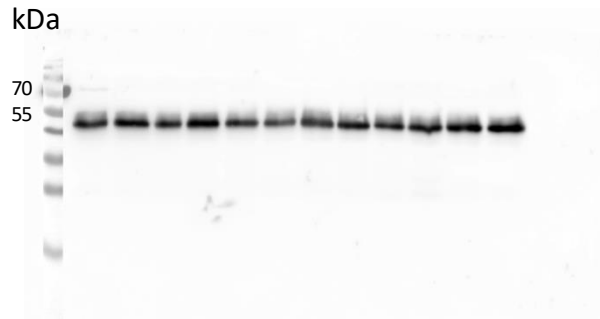
Tpl1



RagC

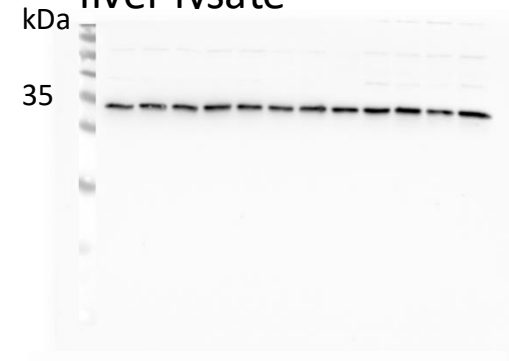


Tpl1

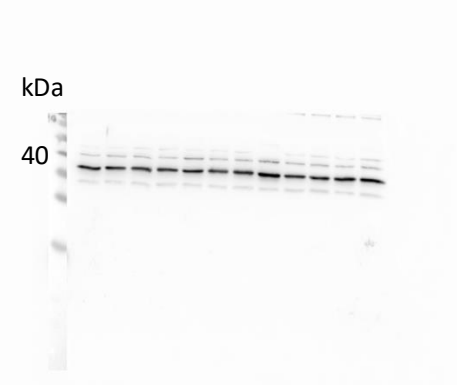


liver lysate

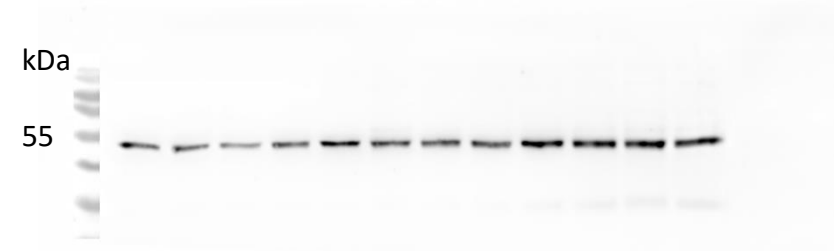
RagA



Gapdh



RagC



Gapdh



Figure 3

tritosomes

liver lysate

Lamtor 1

Lamtor 1

Tpp1

Gapdh

Lamtor 2

Lamtor 2

Tpp1

Gapdh

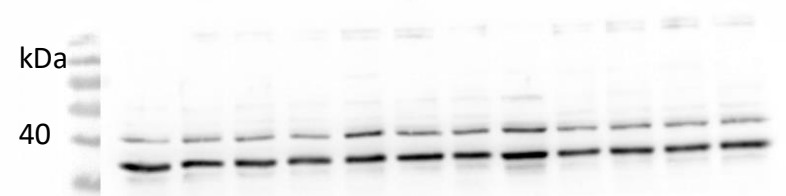
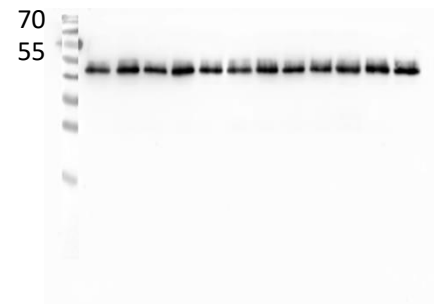
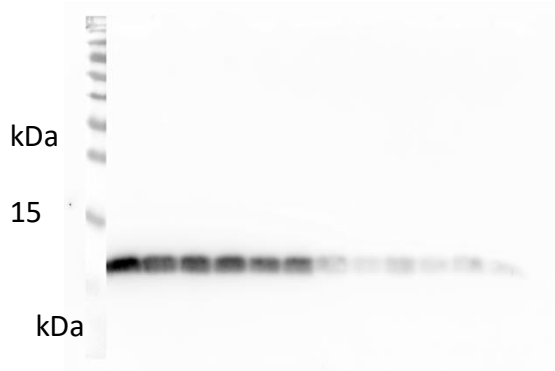
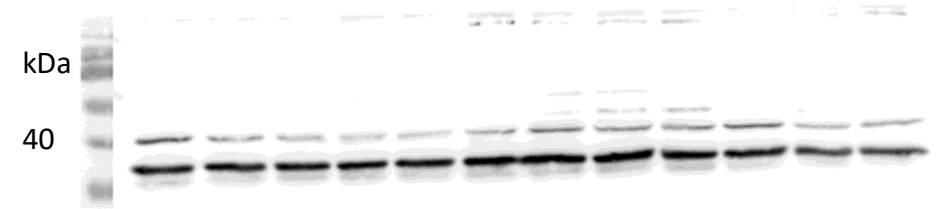
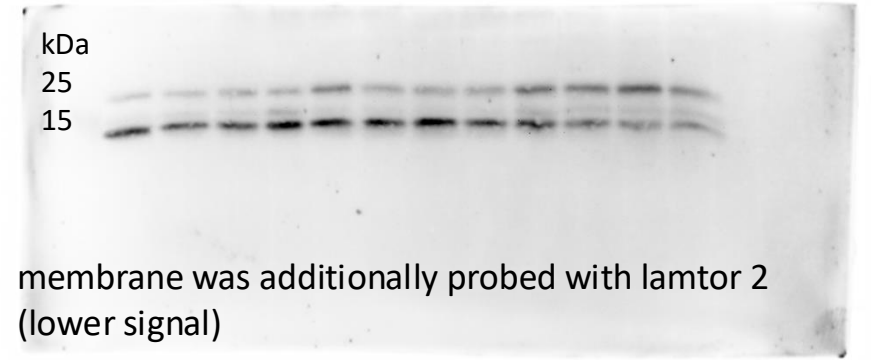


Figure 3

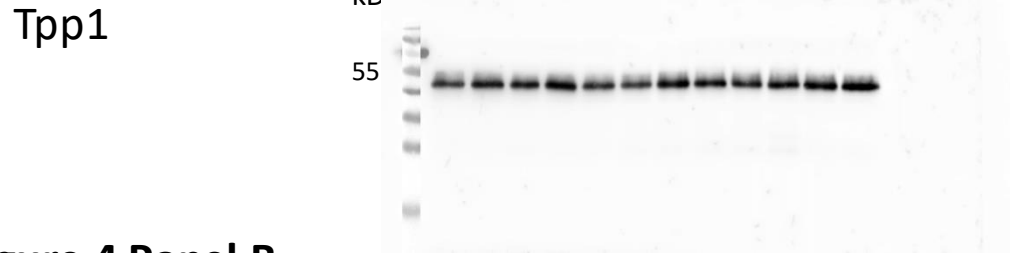
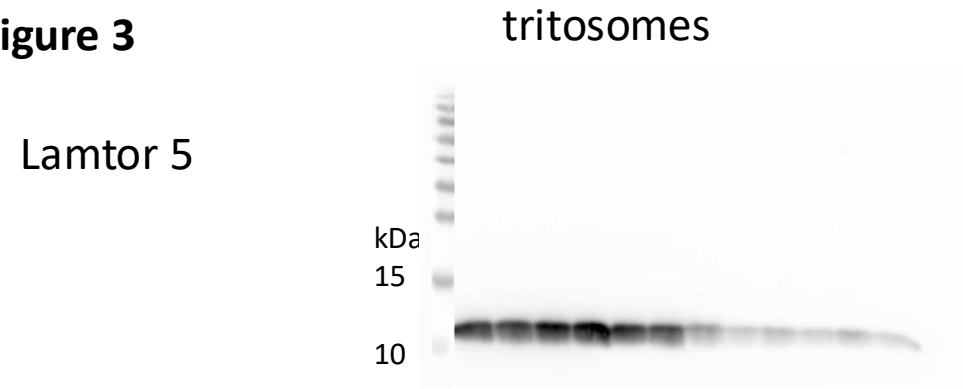


Figure 4 Panel B

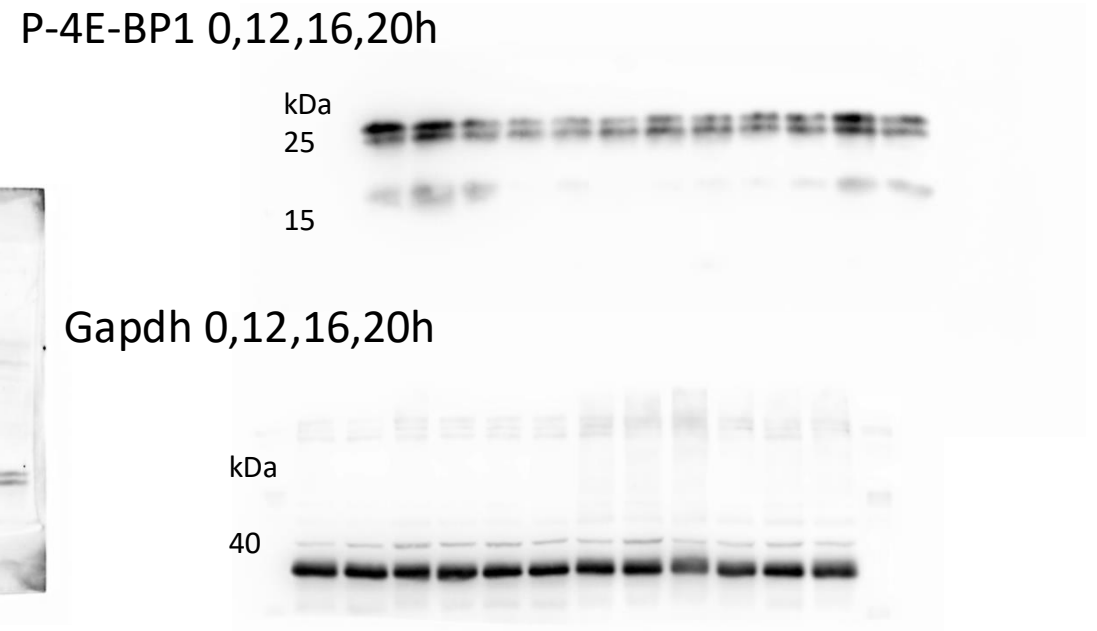
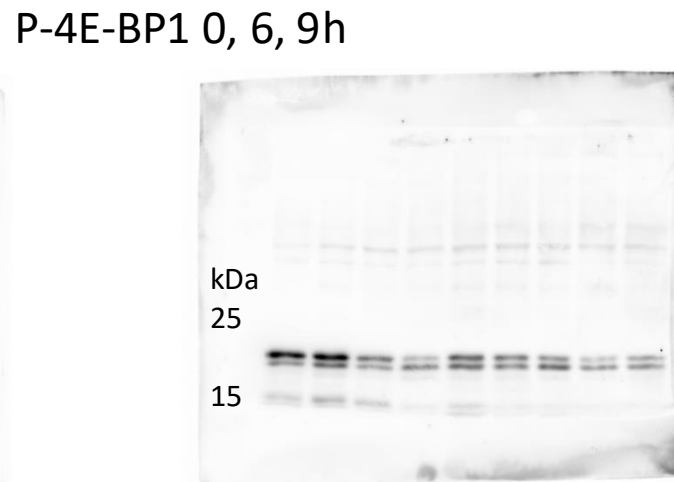
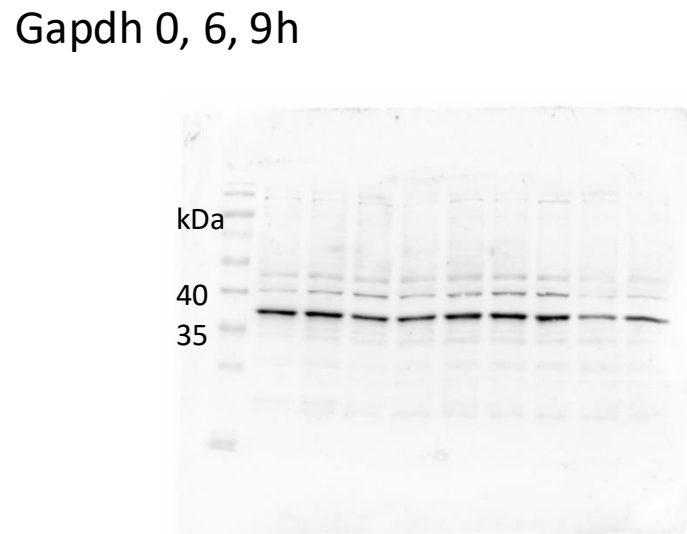
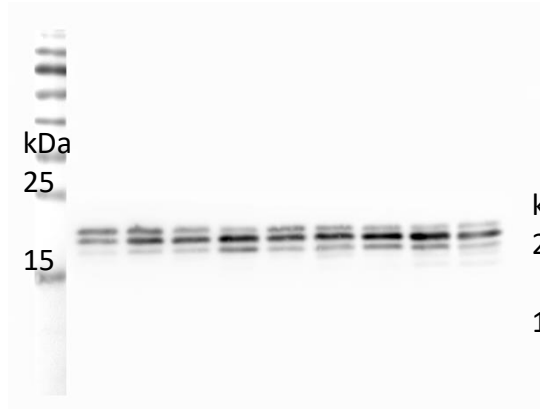
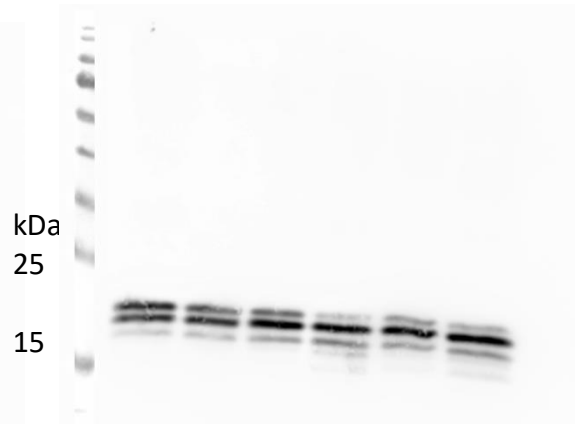


Figure 4 Panel B

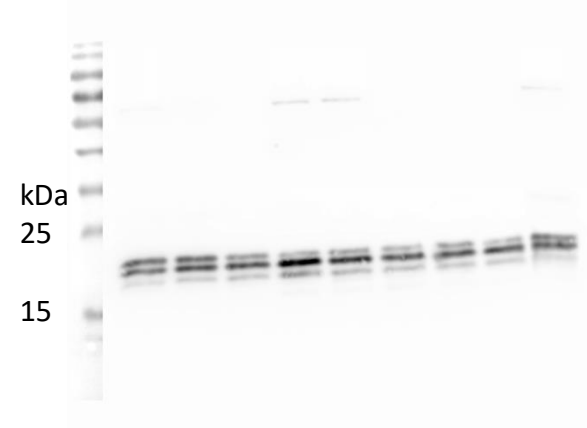
4E-BP1 0,6,9 h



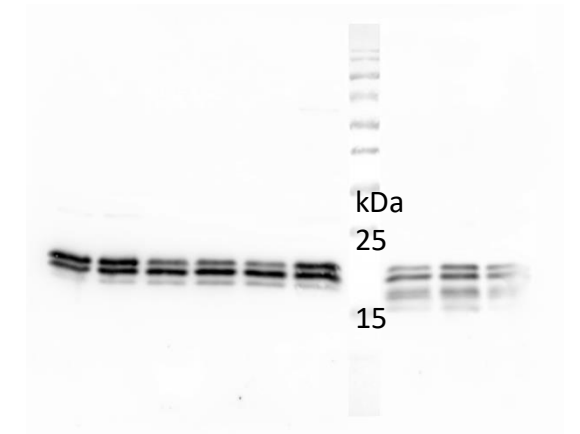
4E-BP1 0,12 h



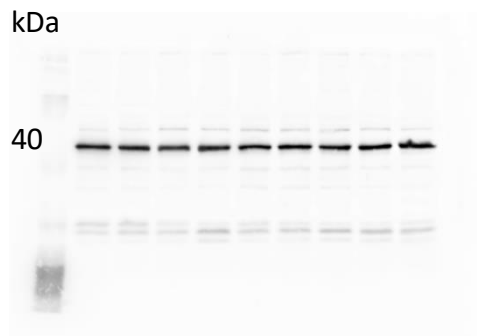
4E-BP1 0,16 h



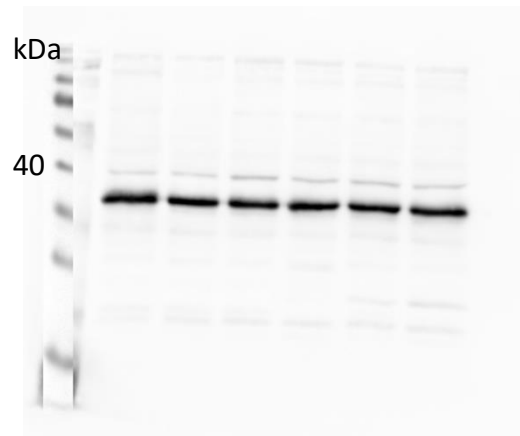
4E-BP1 0,20 h



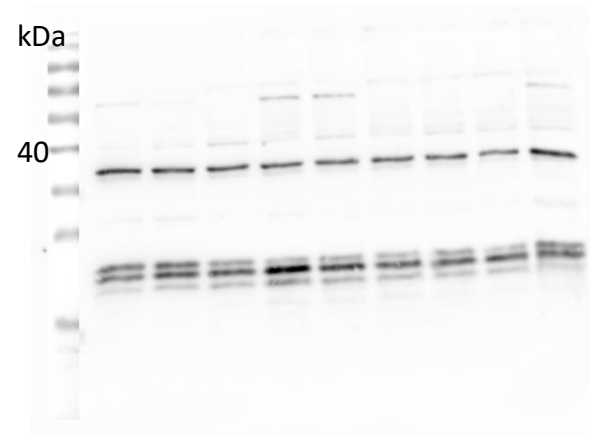
Gapdh 0, 6, 9, 12 h



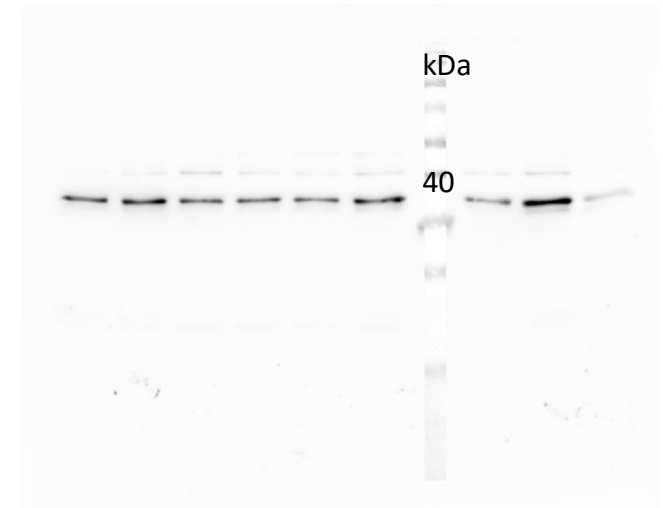
Gapdh 0,16,20 h



Gapdh 0,16 h



Gapdh 0, 20h

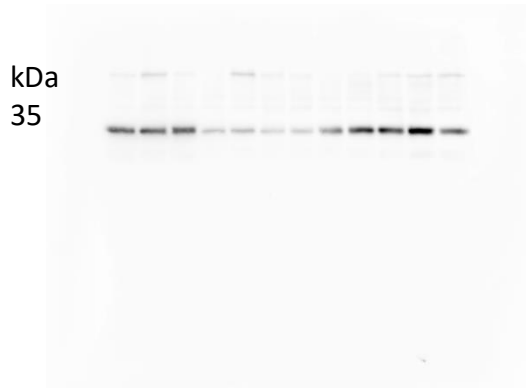


Last three lanes of blot are additional samples not displayed in this publication

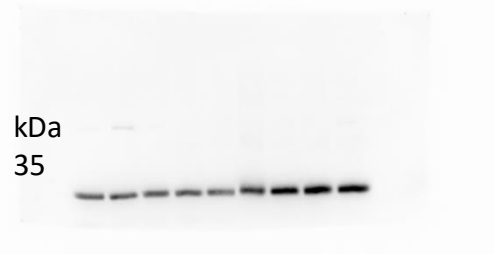
Last three lanes of blot are additional samples not displayed in this publication

Figure 4 Panel B

P-S6 0, 6, 9, 12 h



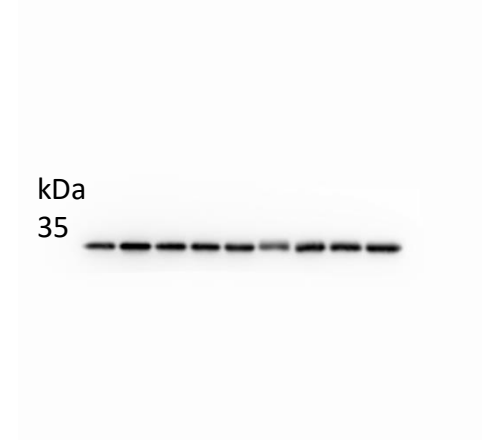
P-S6 0, 16, 20 h



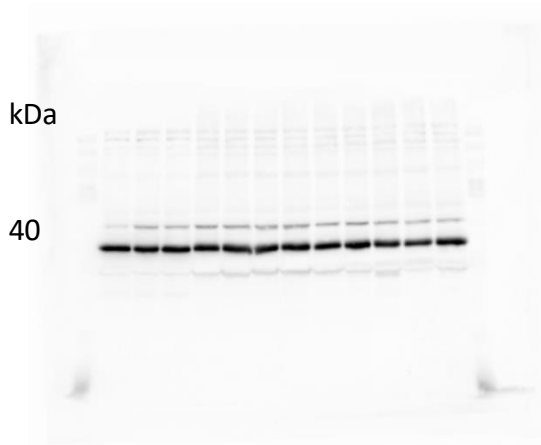
S6 0, 6, 9, 12 h



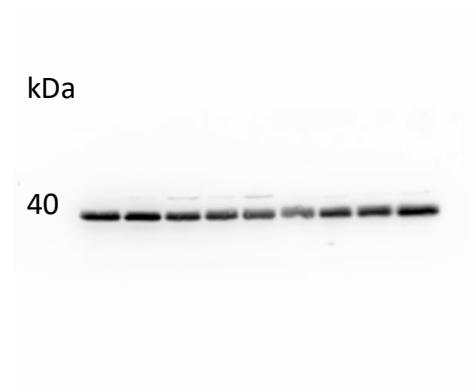
S6 0, 16, 20 h



Gapdh 0, 6, 9, 12 h



Gapdh 0, 16, 20 h



Gapdh 0, 16 h



Gapdh 0, 20h

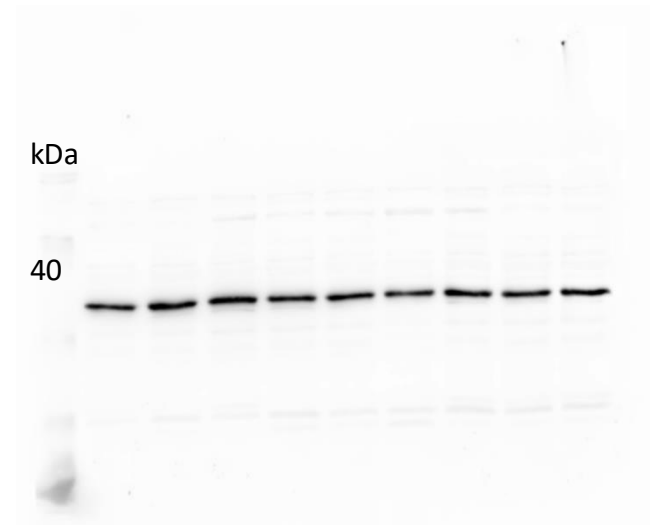


Figure 4 Panel B

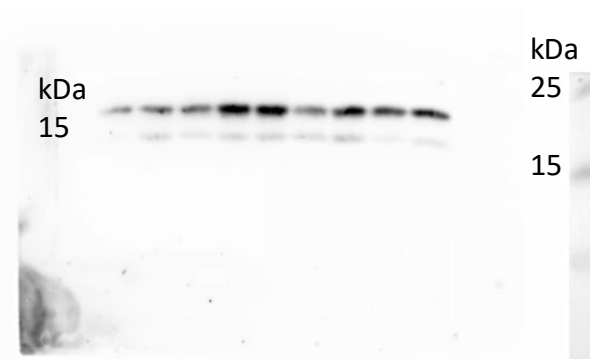
Figure 4 Panel C

Lc3-B 0, 6, 9, 12 h

Lc3-B 0, 16, 20 h

P-4E-BP1 0, 6, 9, 12 h

P-4E-BP1 0, 16, 20 h



Gapdh 0, 6, 9, 12 h

Gapdh 0, 16, 20 h

Gapdh 0, 6, 9, 12 h

Gapdh 0, 16, 20 h

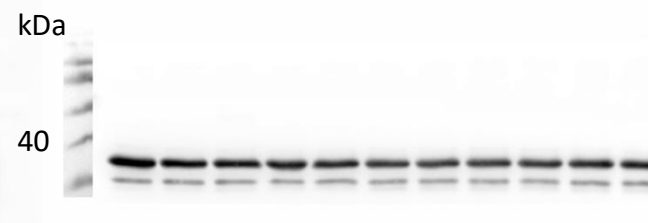
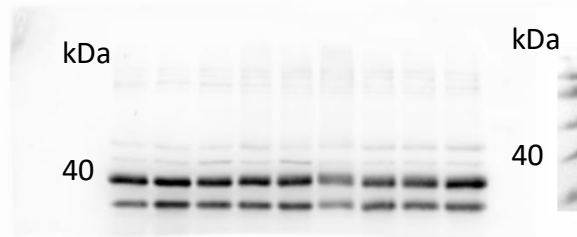
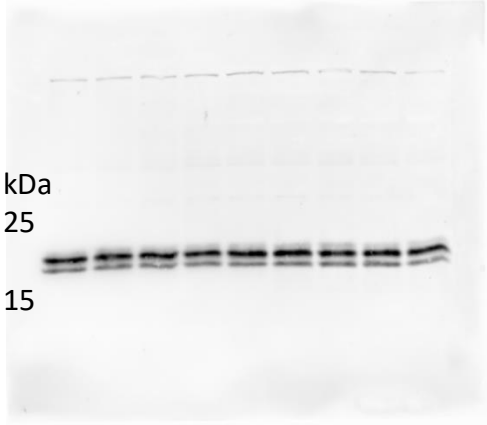
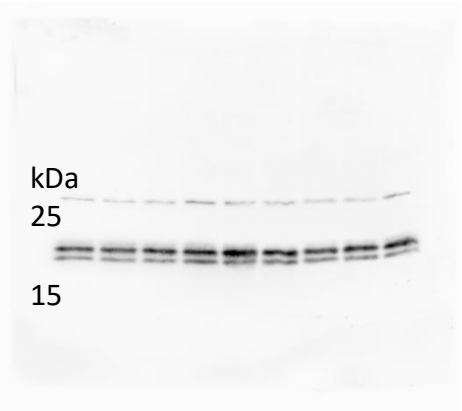


Figure 4 Panel C

4E-BP1 0, 6, 9 h



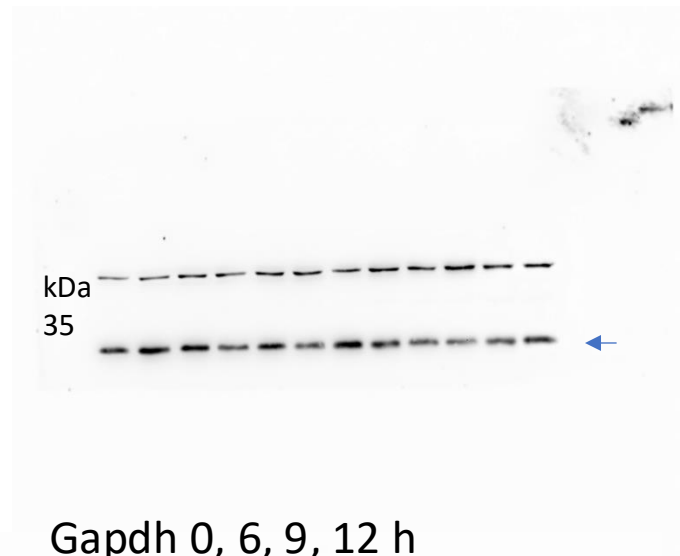
4E-BP1 0, 12 h



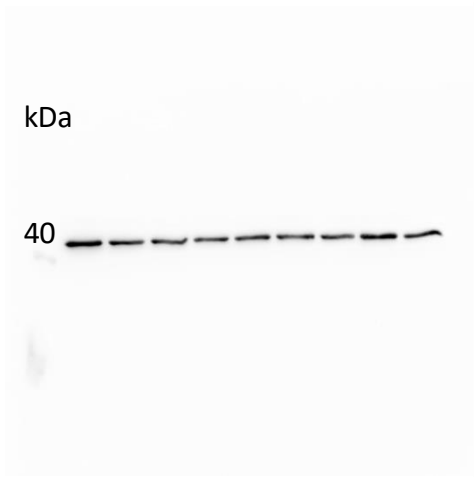
4E-BP1 0, 16, 20 h



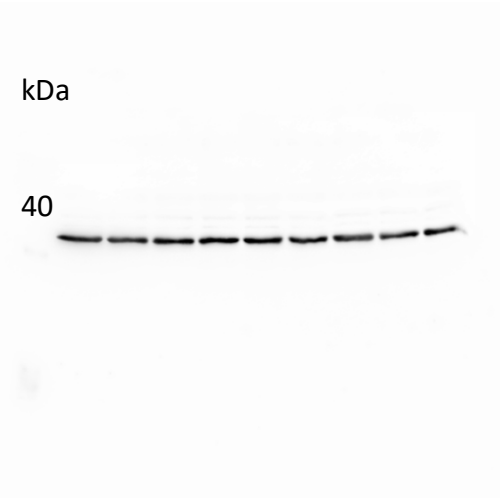
P-S6 0, 6, 9, 12 h



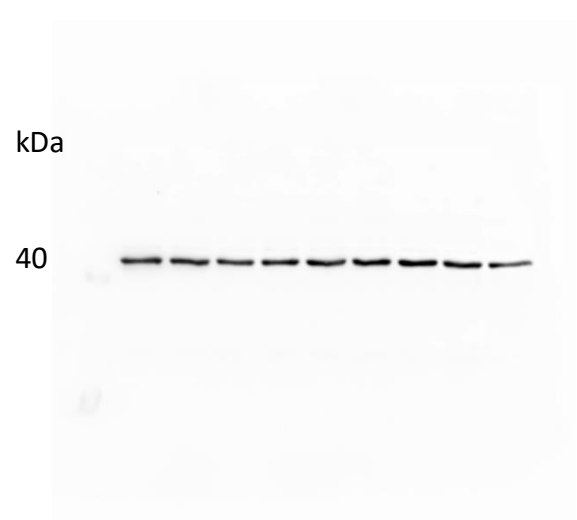
Gapdh 0, 6, 9 h



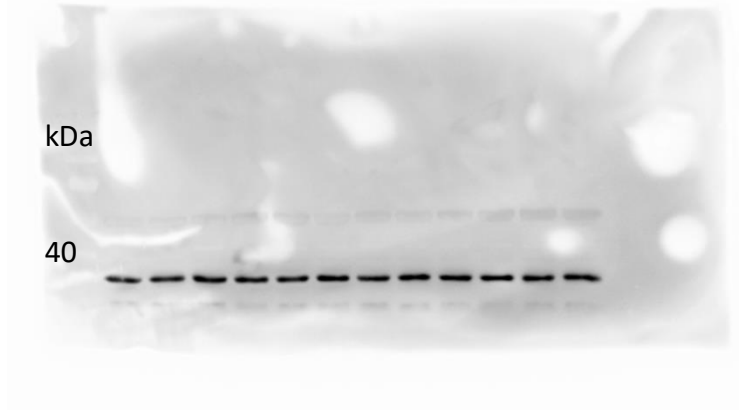
Gapdh 0, 16, 20 h



Gapdh 0, 6, 9, 12 h



Gapdh 0, 6, 9, 12 h

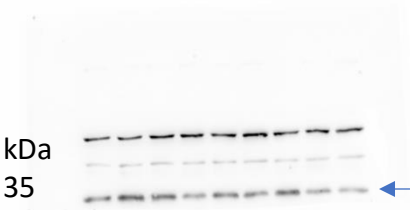


Last three lanes of blot are additional samples not displayed in this publication

Blot with several target exposures, p-S6 band marked with arrow

Figure 4 Panel C

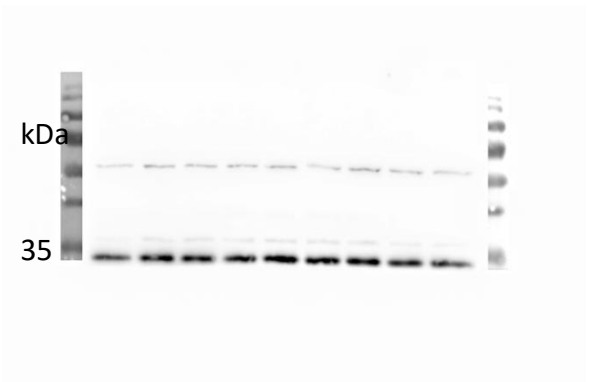
P-S6 0, 16,20 h



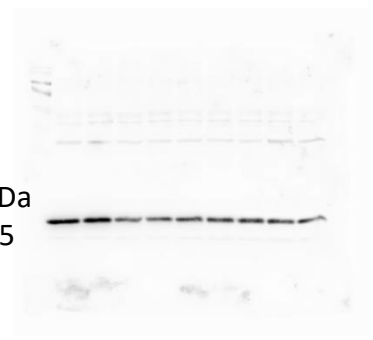
S6 0, 6, 9, 12 h



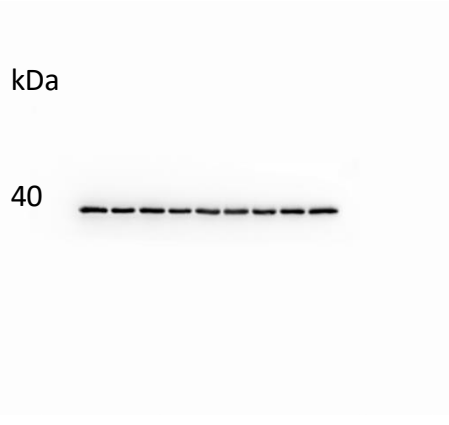
S6 0, 16,20 h



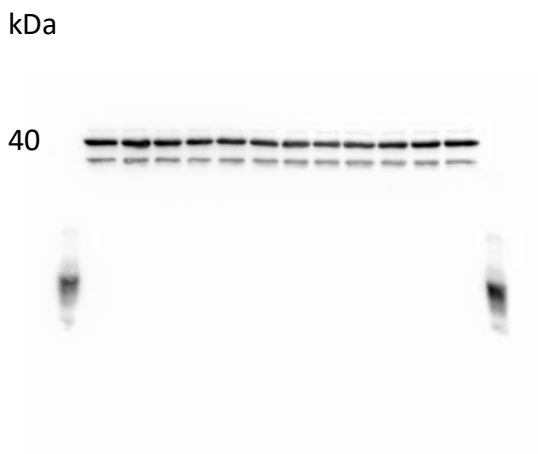
Lc3-B 0, 6, 9 h



Gapdh 0, 16,20 h



Gapdh 0, 6, 9, 12 h



Gapdh 0,16,20 h



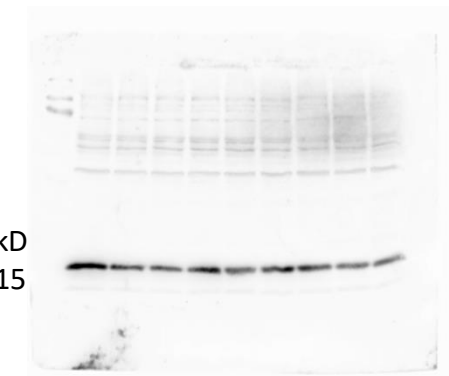
Gapdh 0, 6, 9, 12 h



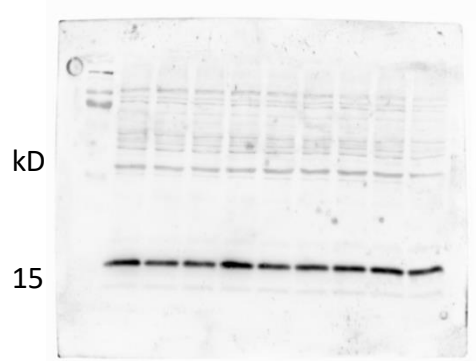
Blot with several target exposures, p-S6 band marked with arrow

Figure 4 Panel C

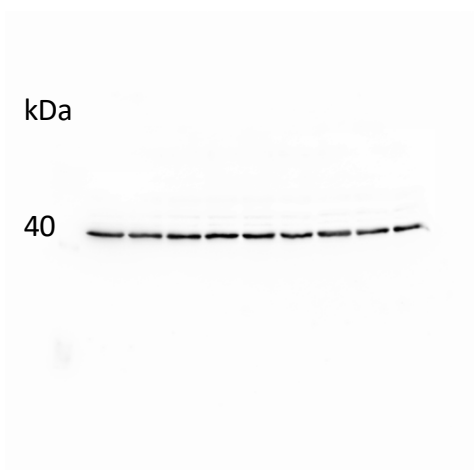
Lc3-B 0, 12 h



Lc3-B 0, 16, 20 h



Gapdh 0, 12 h



Gapdh 0, 16, 20 h

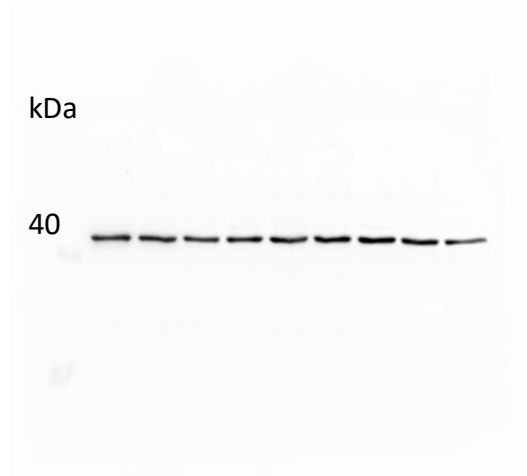
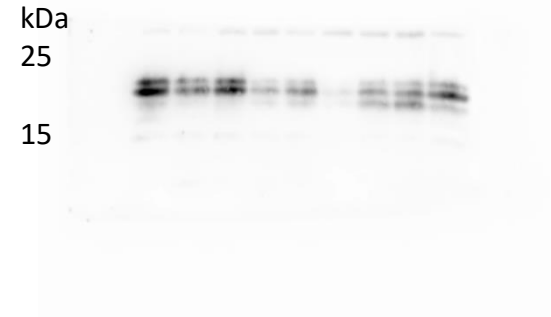


Figure 4 Panel D

P-4E-BP1 0,6,9,12 h



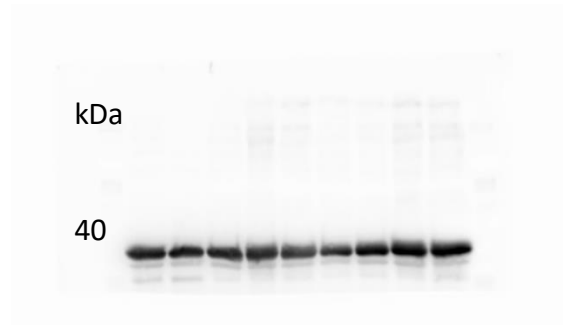
P-4E-BP1 0,16,20 h



Gapdh 0, 6, 9, 12 h



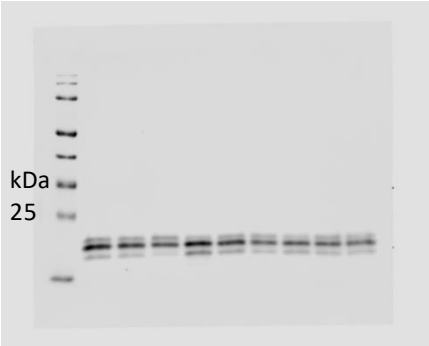
Gapdh 0, 16, 20 h



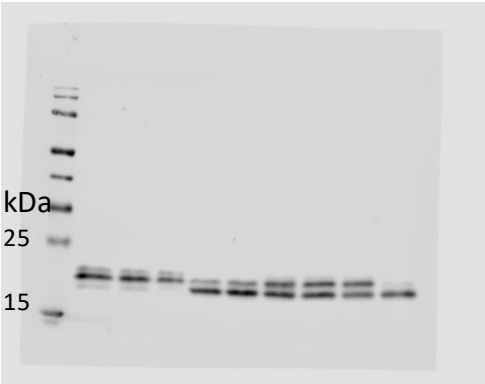
Last three lanes of blot are additional samples not displayed in this publication

Figure 4 Panel D

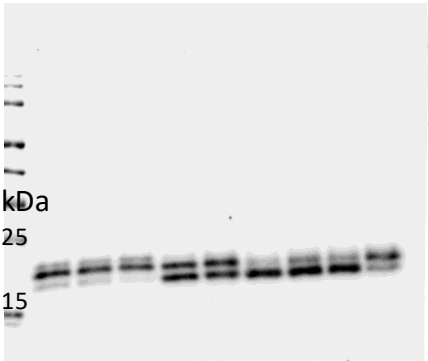
4E-BP1 0,6,9 h



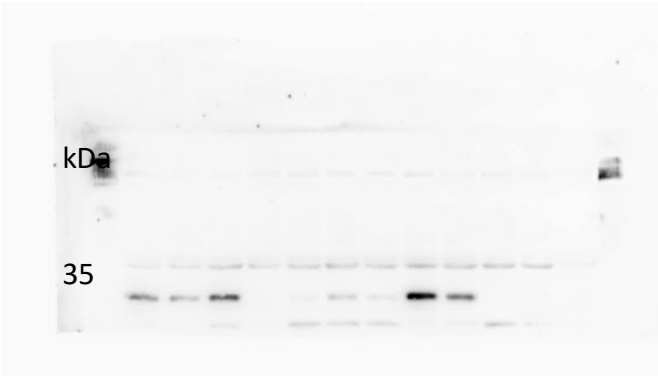
4E-BP1 0, 12 h



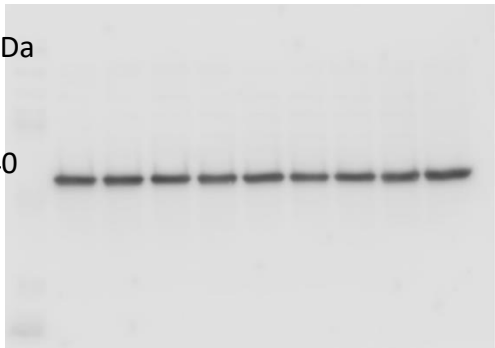
4E-BP1 0,16,20 h



P-S6 0, 6, 9, 12 h



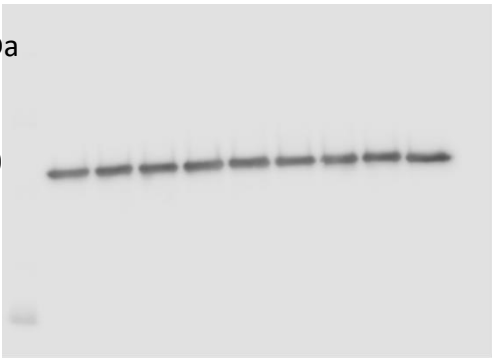
Gapdh 0,6,9 h



Gapdh 0, 12 h



Gapdh 0, 16,20 h



Gapdh 0,6,9,12 h

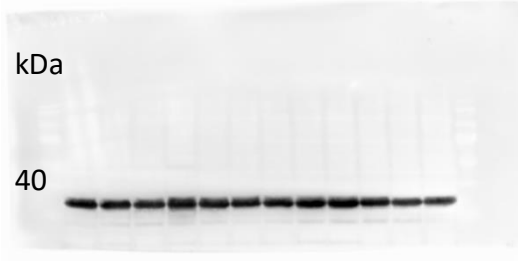
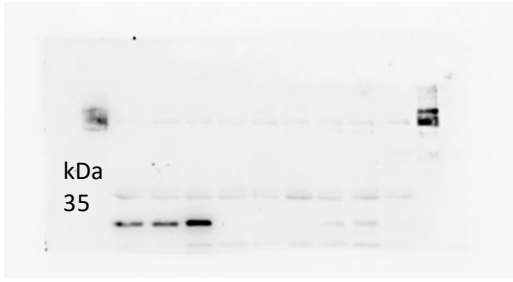


Figure 4 Panel D

P-S6 0, 16,20 h



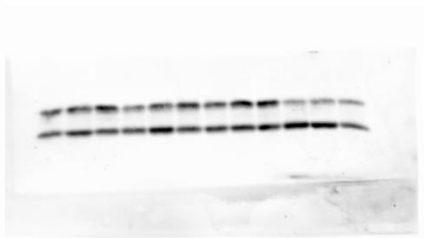
S6 0, 6,9,12 h



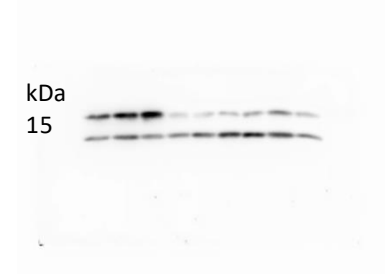
S6 0, 16,20 h



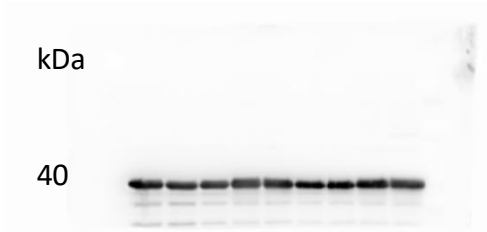
Lc3-B 0, 6, 9, 12 h



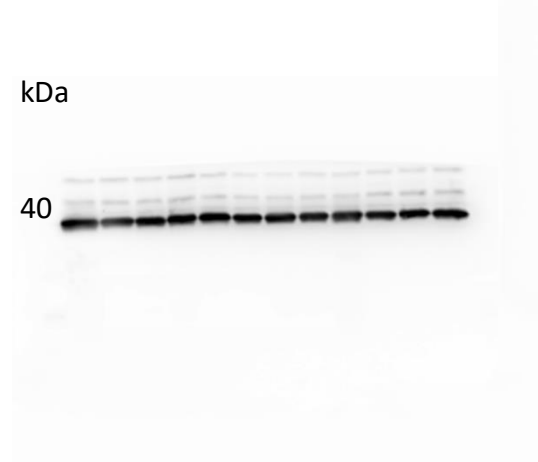
Lc3-B 0, 16, 20h



Gapdh 0,16,20 h



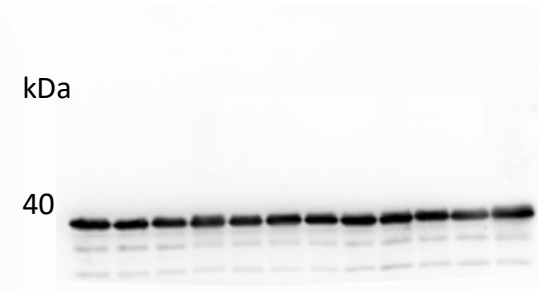
Gapdh 0,6,9, 12 h



Gapdh 0, 16,20 h



Gapdh 0,6,9, 12 h



Gapdh 0, 16,20 h

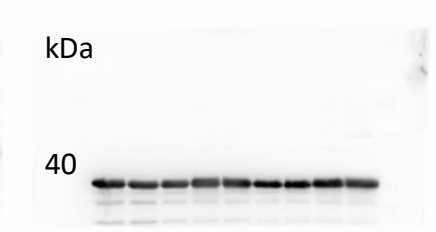


Figure 5 Panel A

tritosomes

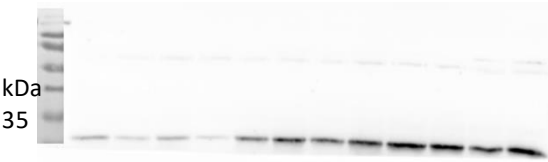
whole liver

Psma7

Psmb5

Psma7

Psmb5



Tpp1

Tpp1

Gapdh

Gapdh

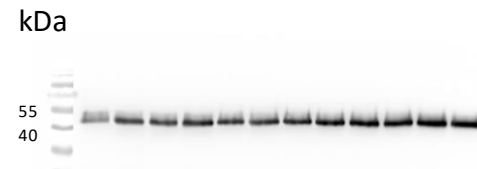


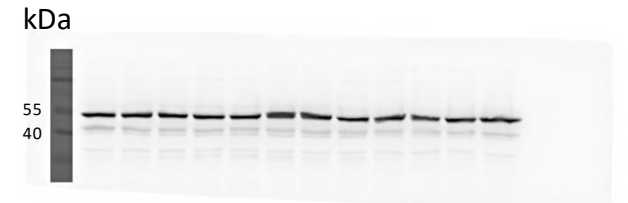
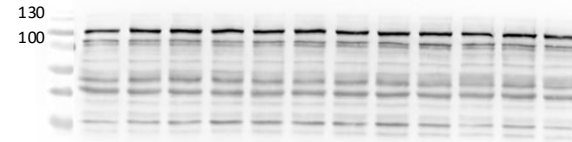
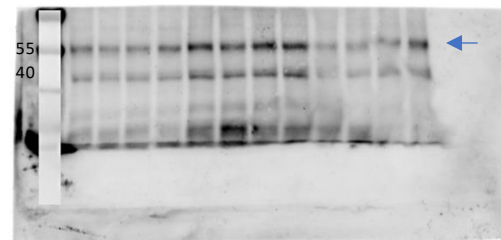
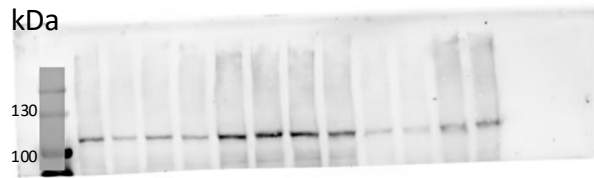
Figure 5 Panel B

Lonp2

Nudt12

Lonp2

Nudt12

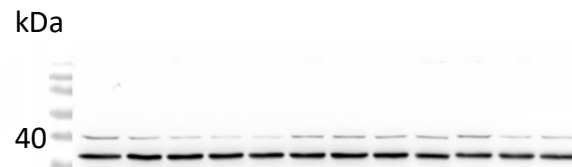
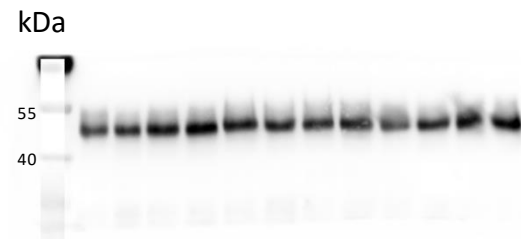
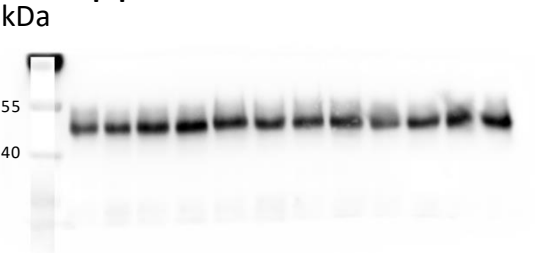


Tpp1

Tpp1

Gapdh

Gapdh



Note: Lonp2 and Nudt 12 were probed on the same membrane. Nudt marked by arrow due to previous signals.

Figure 5 Panel C

tritosomes

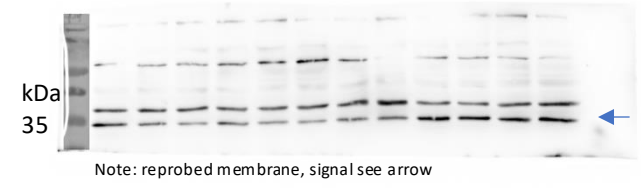
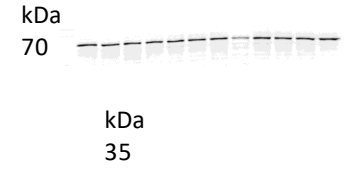
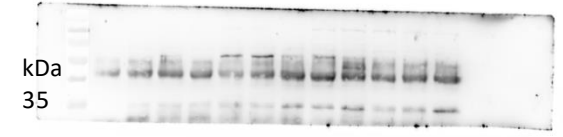
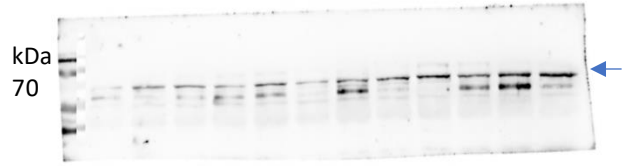
whole liver

Cpt2

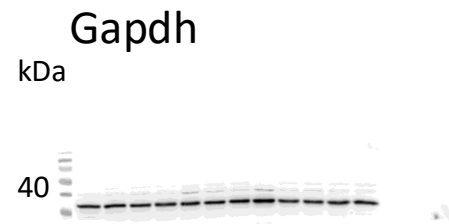
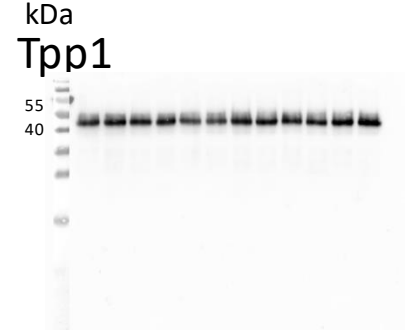
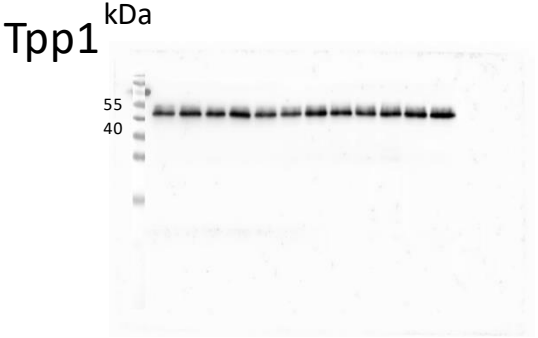
Vdac1

Cpt2

Vdac1



Note: reprobed membrane, upper signal is loading ocontrol

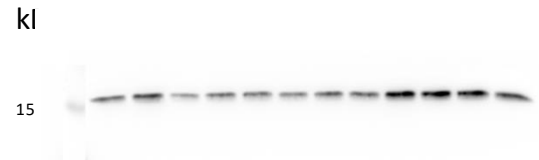
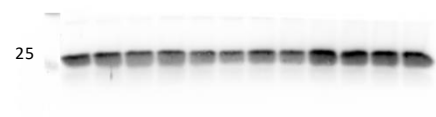
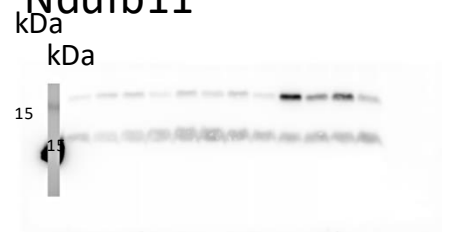
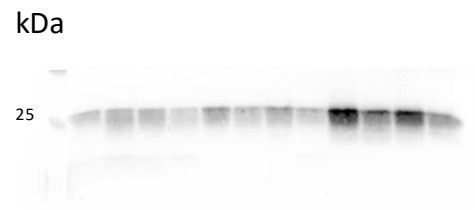


Ndufb7

Ndufb11

Ndufb7

Ndufb11

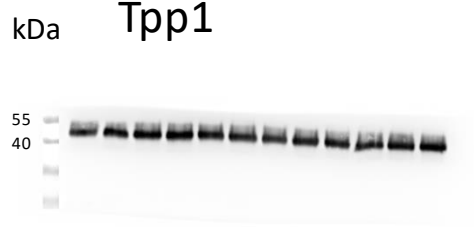


Tpp1

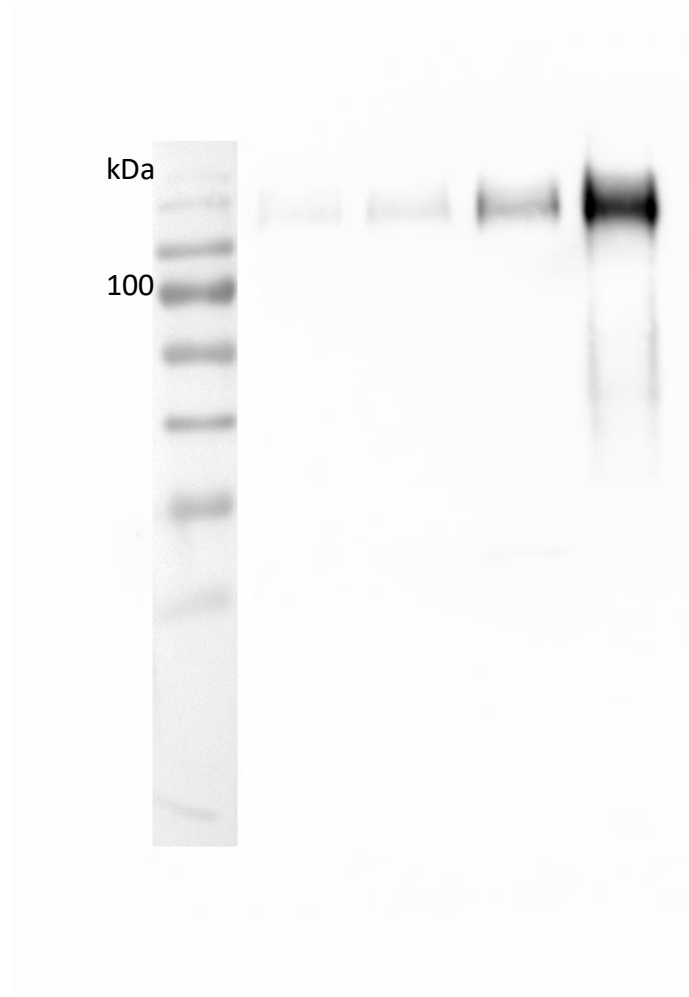
Tpp1

Gapdh

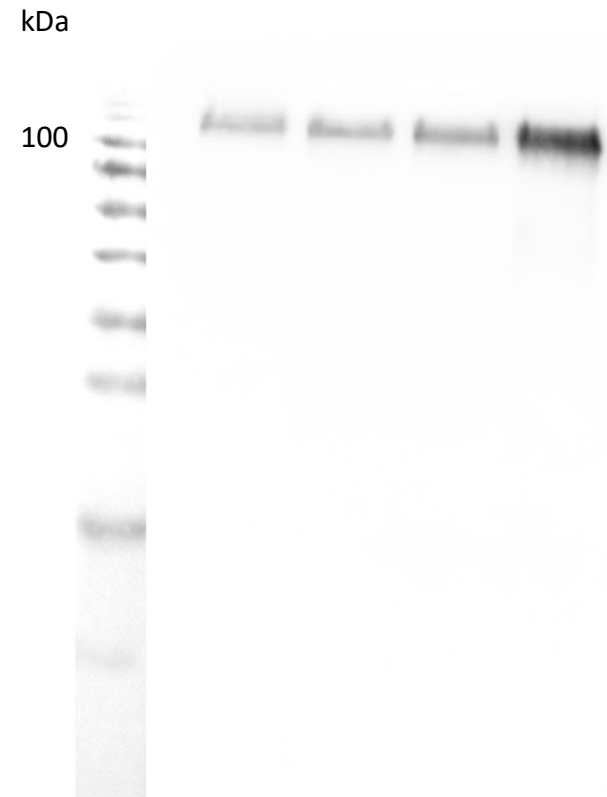
Gapdh



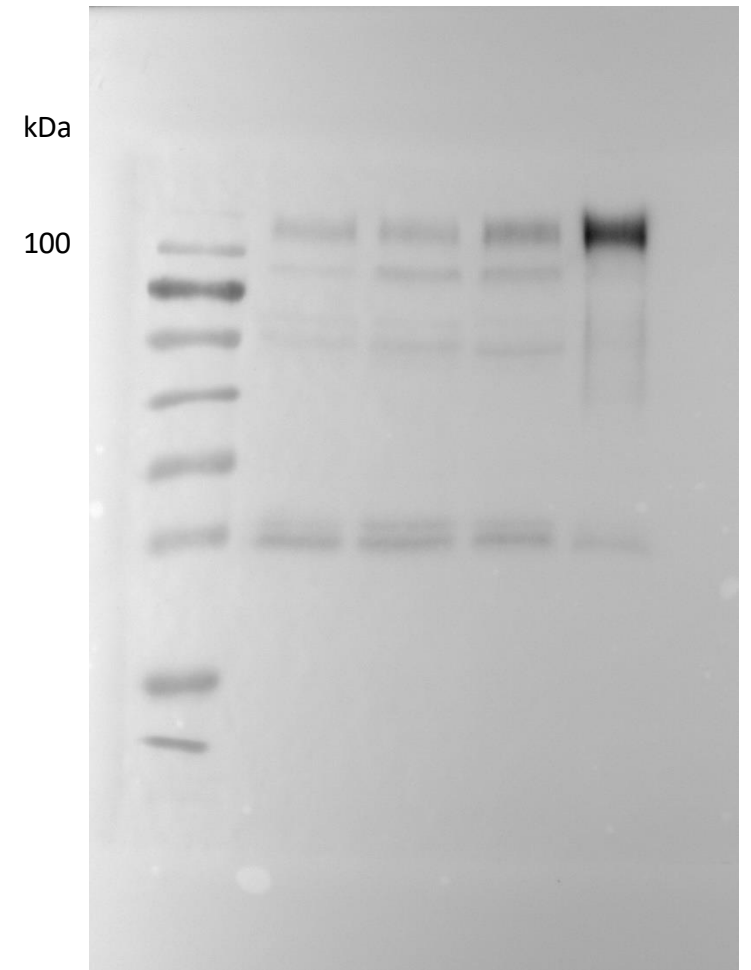
Supplementary Figure 1



Lamp 1 0h



Lamp1 6h



Lamp 1 24 h