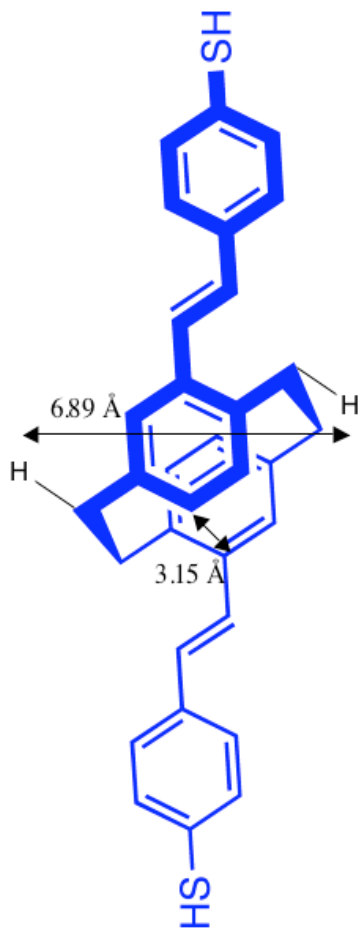


$$\begin{aligned} \text{Molecular width} &= 6.44 \text{ \AA} + (2 * 1.0 \text{ \AA}) \\ &= 8.44 \text{ \AA} \end{aligned}$$

$$\text{Molecular thickness} = 2 * 1.77 \text{ \AA} = 3.54 \text{ \AA}$$

$$\begin{aligned} \text{Molecular area} &= 8.44 \text{ \AA} * 3.54 \text{ \AA} \\ &= \mathbf{30 \text{ \AA}^2} \end{aligned}$$



$$\begin{aligned} \text{Molecular width} &= 6.89 \text{ \AA} + (2 * 1.2 \text{ \AA}) \\ &= 9.29 \text{ \AA} \end{aligned}$$

$$\begin{aligned} \text{Molecular thickness} &= 3.15 \text{ \AA} + (2 * 1.77 \text{ \AA}) \\ &= 6.69 \text{ \AA} \end{aligned}$$

$$\begin{aligned} \text{Molecular area} &= 9.29 \text{ \AA} * 6.69 \text{ \AA} \\ &= \mathbf{62 \text{ \AA}^2} \end{aligned}$$