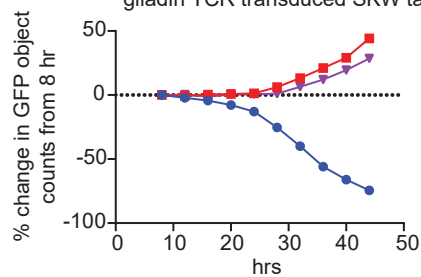


A.

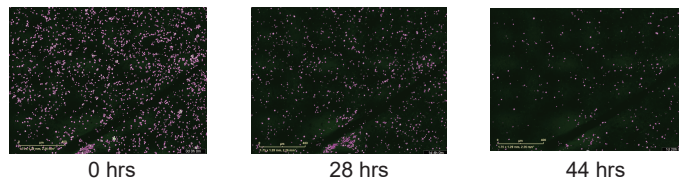
CD8 Treg killing of
gliadin TCR transduced SKW targets



- CD8 Treg enriched with gliadin TCR transduced SKW targets
- Non-CD8 Tregs with gliadin TCR transduced SKW targets
- ▲ Gliadin TCR transduced SKW targets only

B.

CD8 Treg enriched with activated gliadin TCR transduced SKW targets



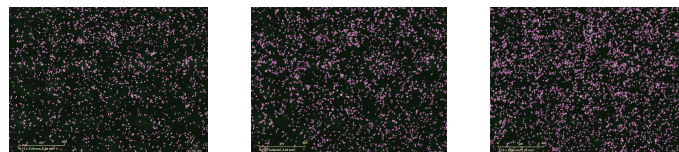
0 hrs

28 hrs

44 hrs

C.

Non-CD8 Tregs with activated gliadin TCR transduced SKW



0 hrs

28 hrs

44 hrs