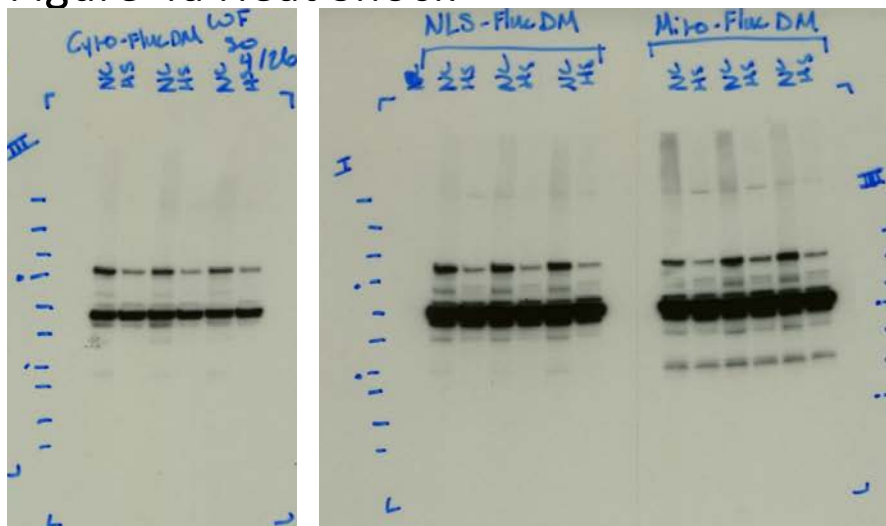


Full Blot Scans by Figure

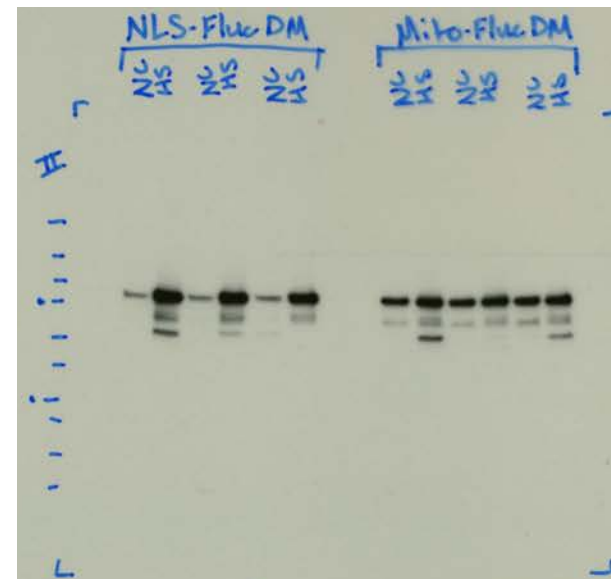
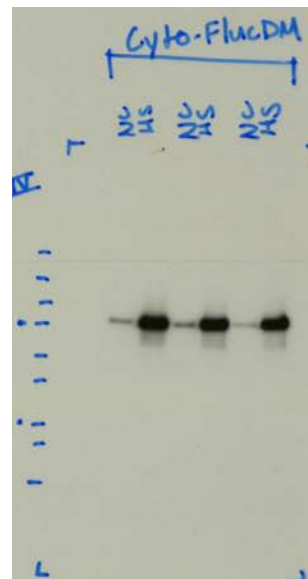
Curley et al.

Transgenic sensors reveal compartment-specific effects of endocrine signaling and aggregation-prone proteins on subcellular proteostasis during aging

Figure 4a Heat Shock

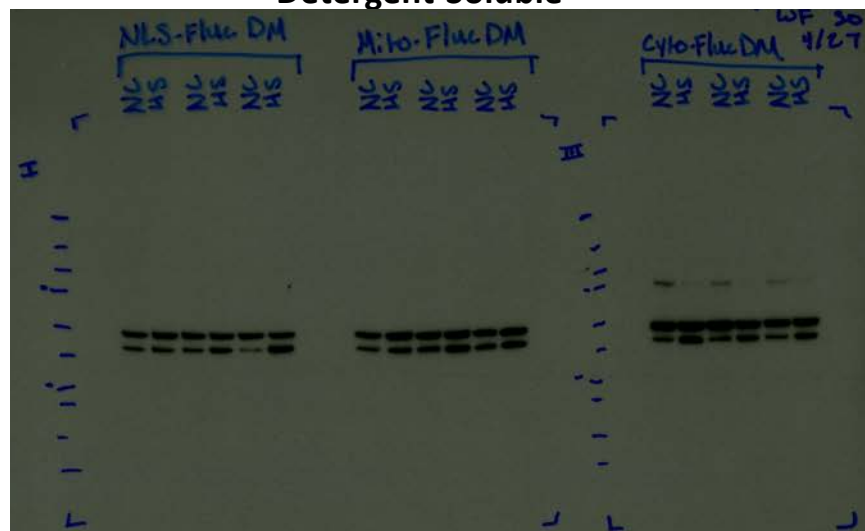


Anti-GFP



Detergent-Soluble

Detergent-Insoluble



Anti-Beta Actin

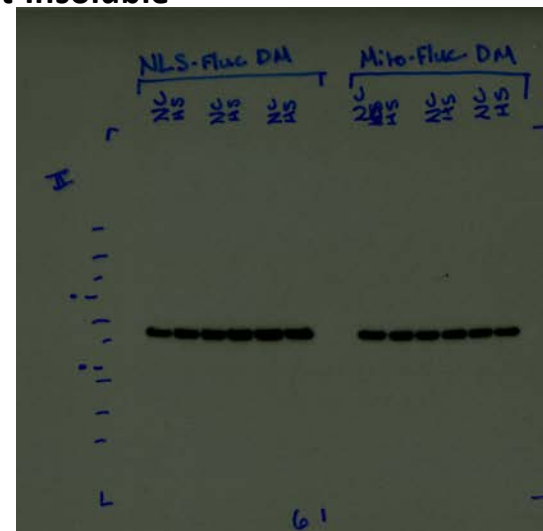
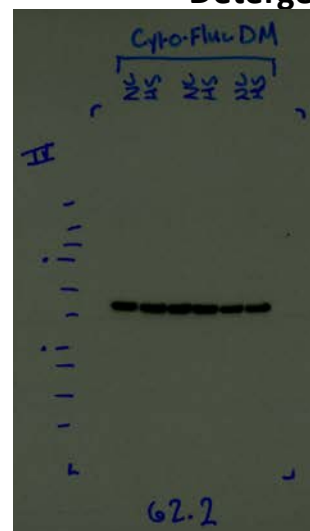
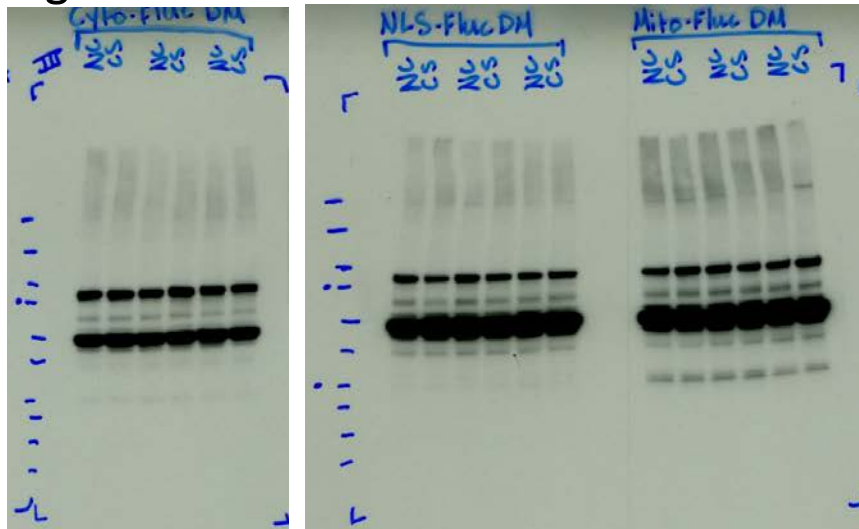
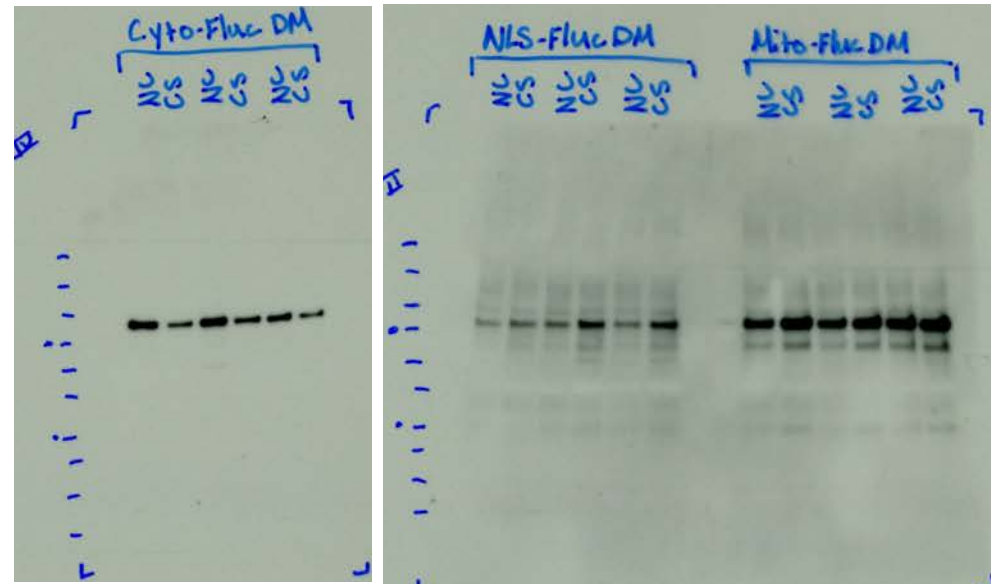


Figure 4b Cold Shock

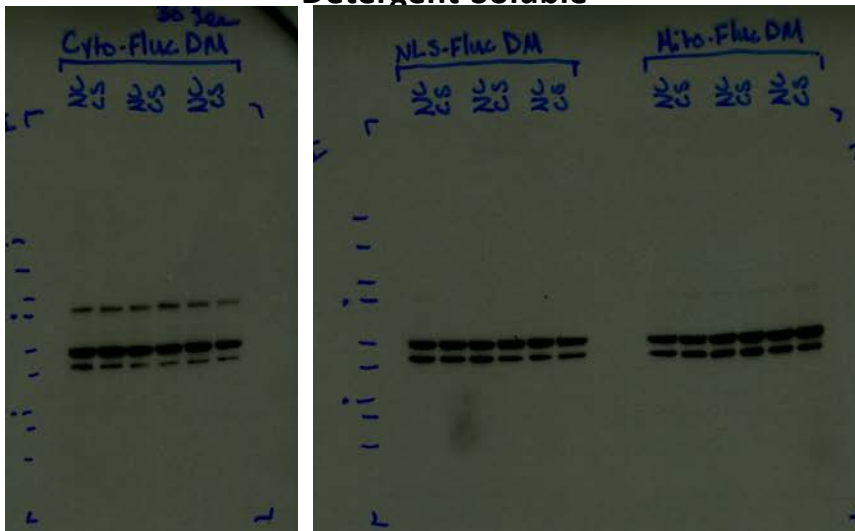


Anti-GFP



Detergent-Soluble

Detergent-Insoluble



Anti-Beta Actin

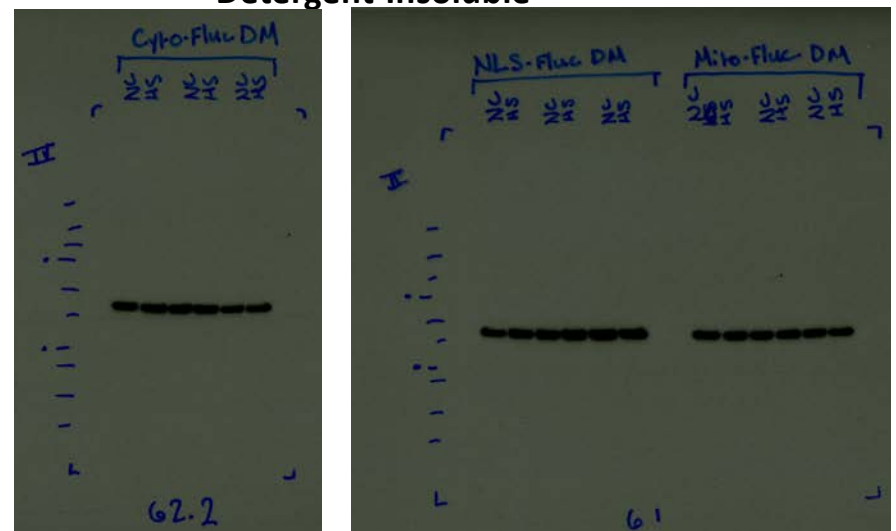


Figure 5a, 5b, 5c detergent-soluble Fluc Akh Whole Flies

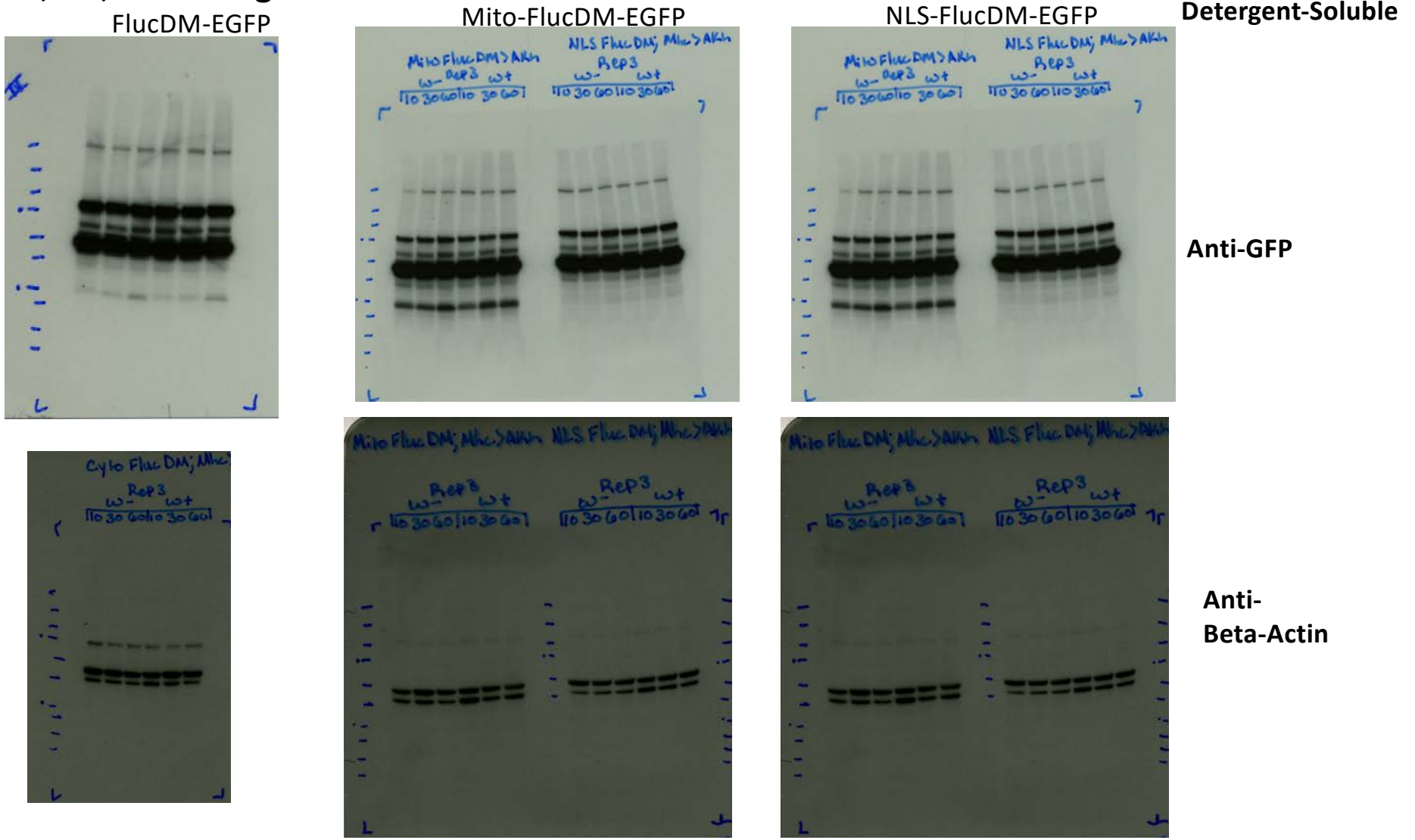


Figure 5a, 5b, 5c detergent-insoluble Fluc Akh Whole Flies

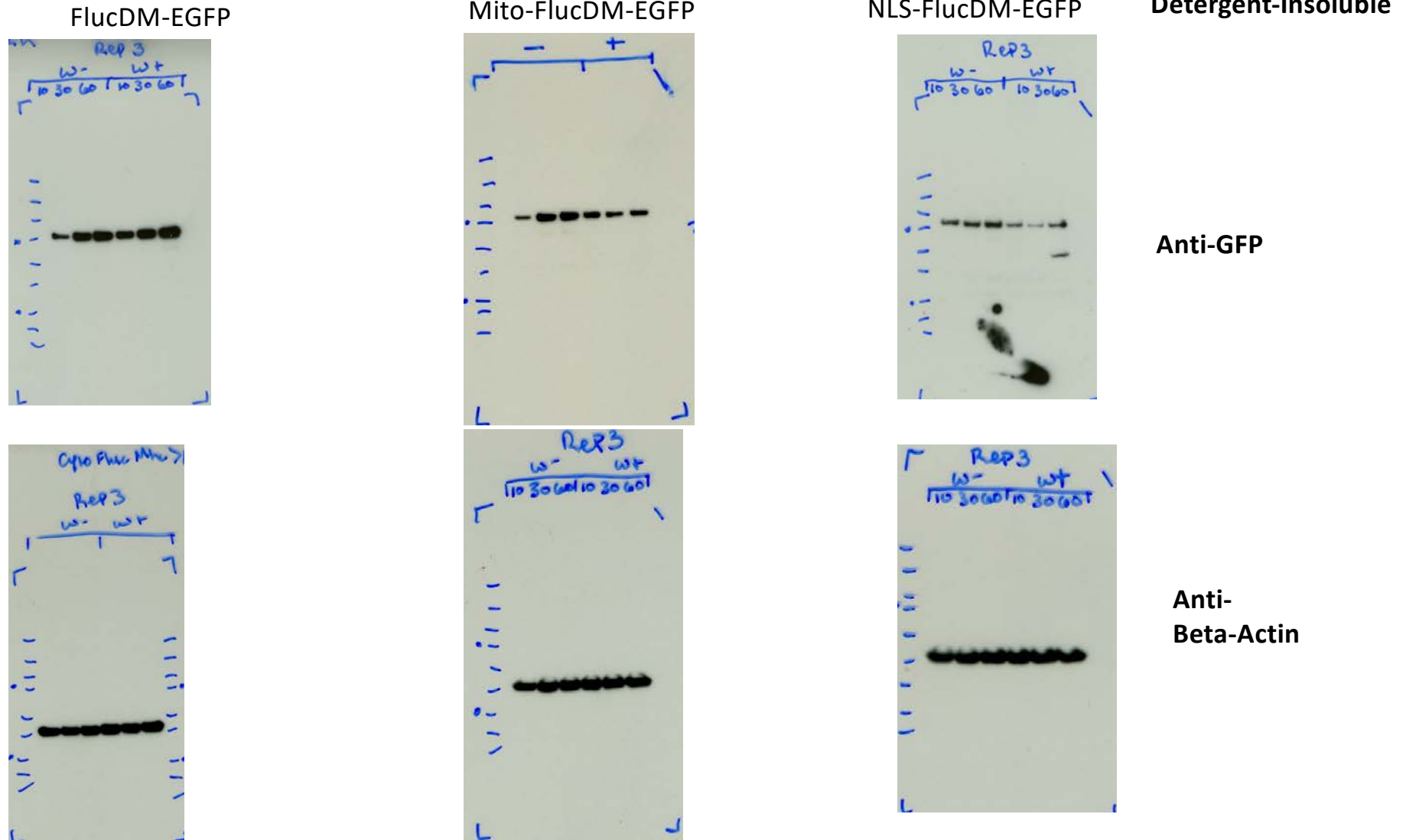
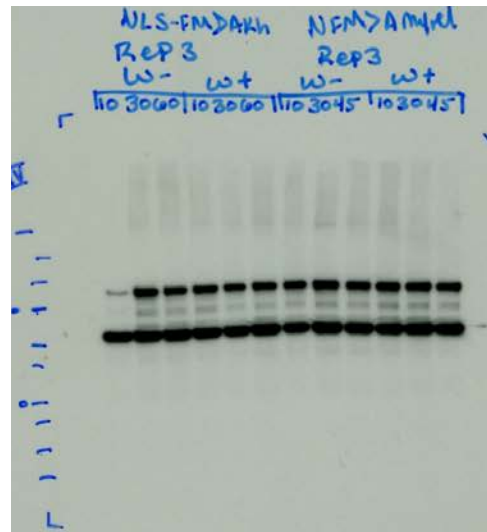
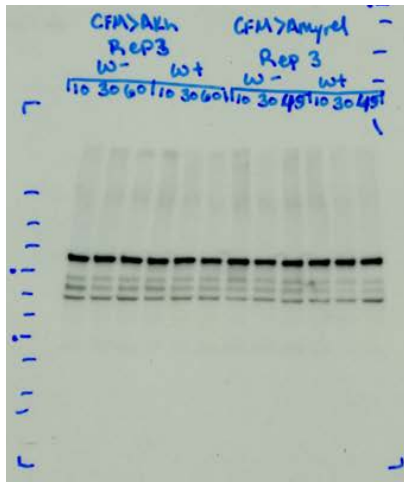
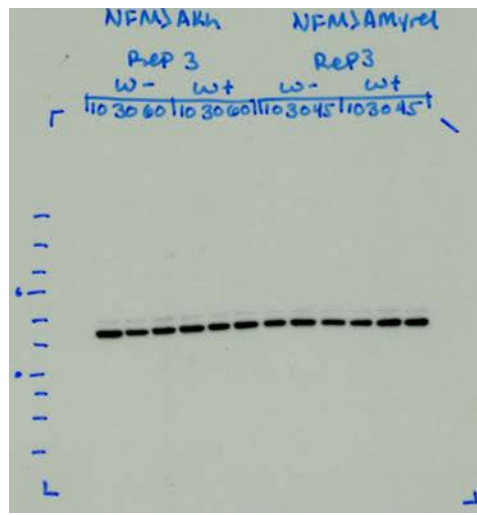
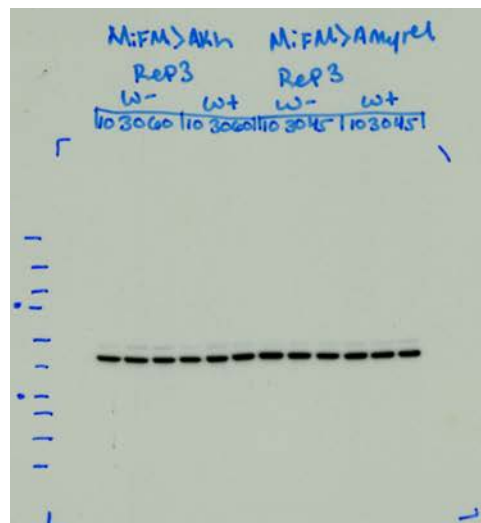
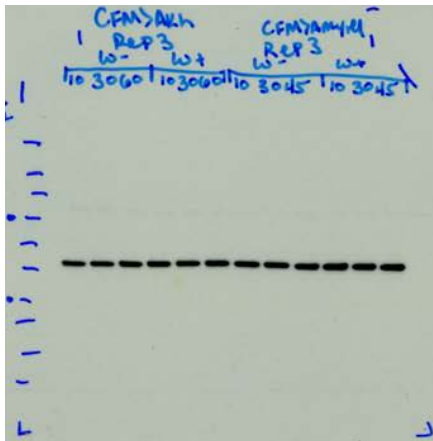


Figure 5d, 5e, 5f detergent-soluble Fluc Amyrel Heads
 FlucDM-EGFP Mito-FlucDM-EGFP NLS-FlucDM-EGFP

Detergent-Soluble



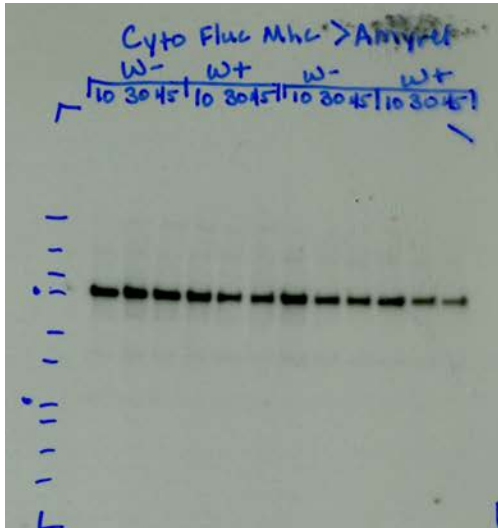
Anti-GFP



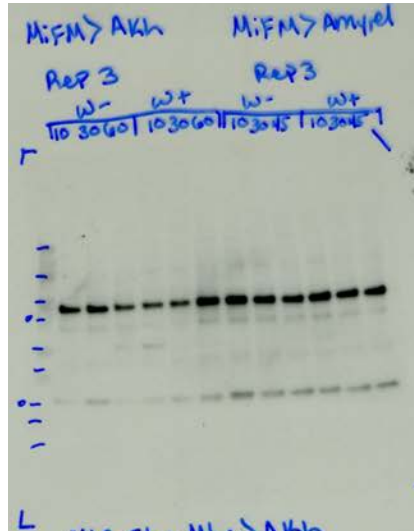
Anti-Beta-Actin

Figure 5d, 5e, 5f detergent-insoluble Fluc Amyrel Heads

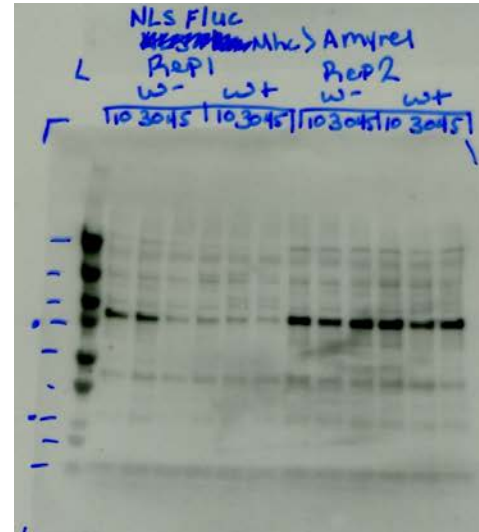
FlucDM-EGFP



Mito-FlucDM-EGFP

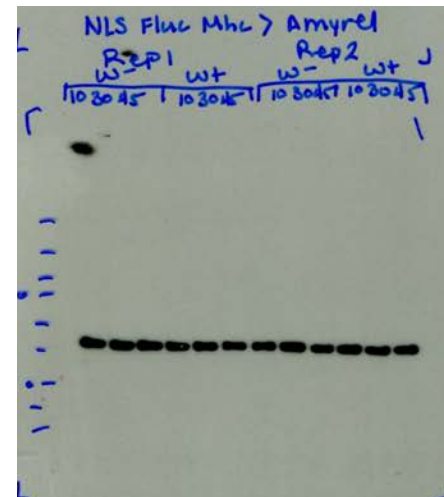
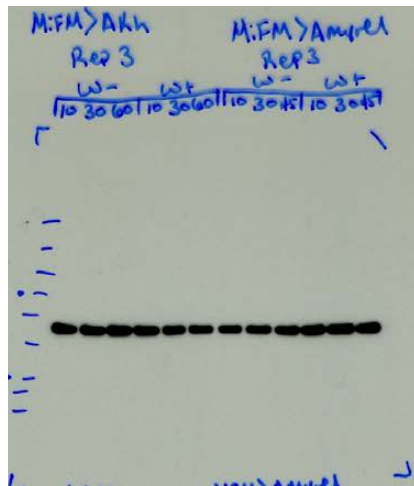
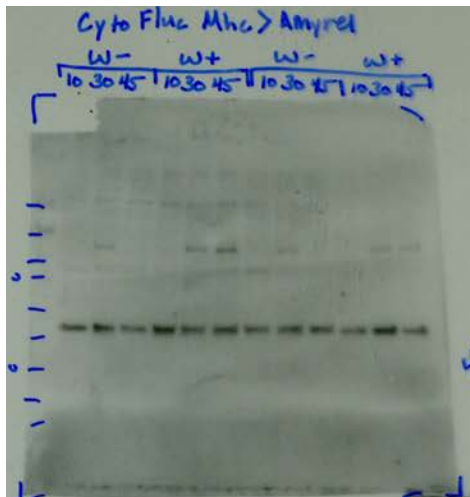


NLS-FlucDM-EGFP



Detergent-Insoluble

Anti-GFP



Anti-Beta-Actin

Figure 6a, 6b, 6c detergent-soluble FTD Poly Q

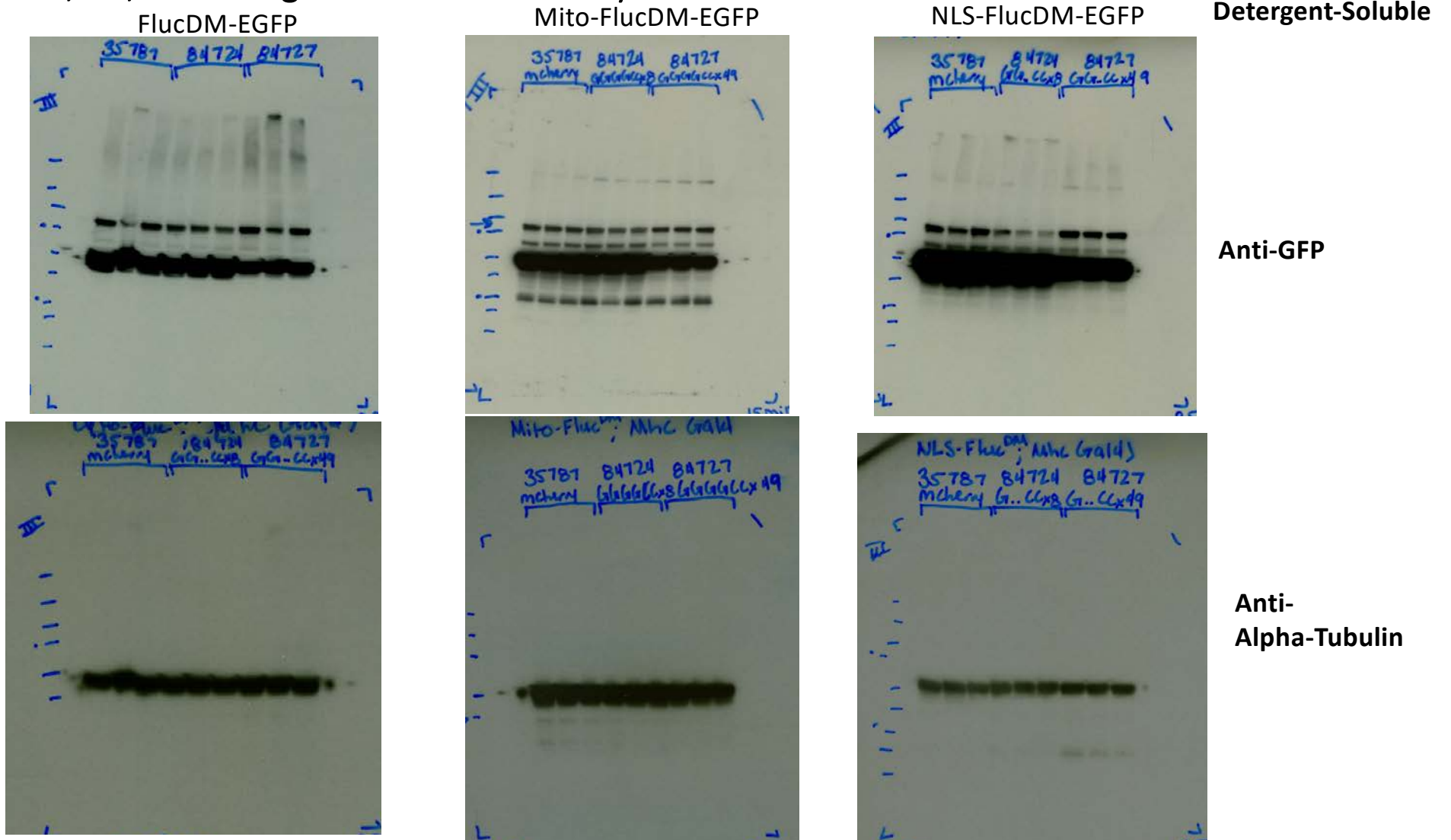


Figure 6a, 6b, 6c detergent-insoluble FTD Poly Q

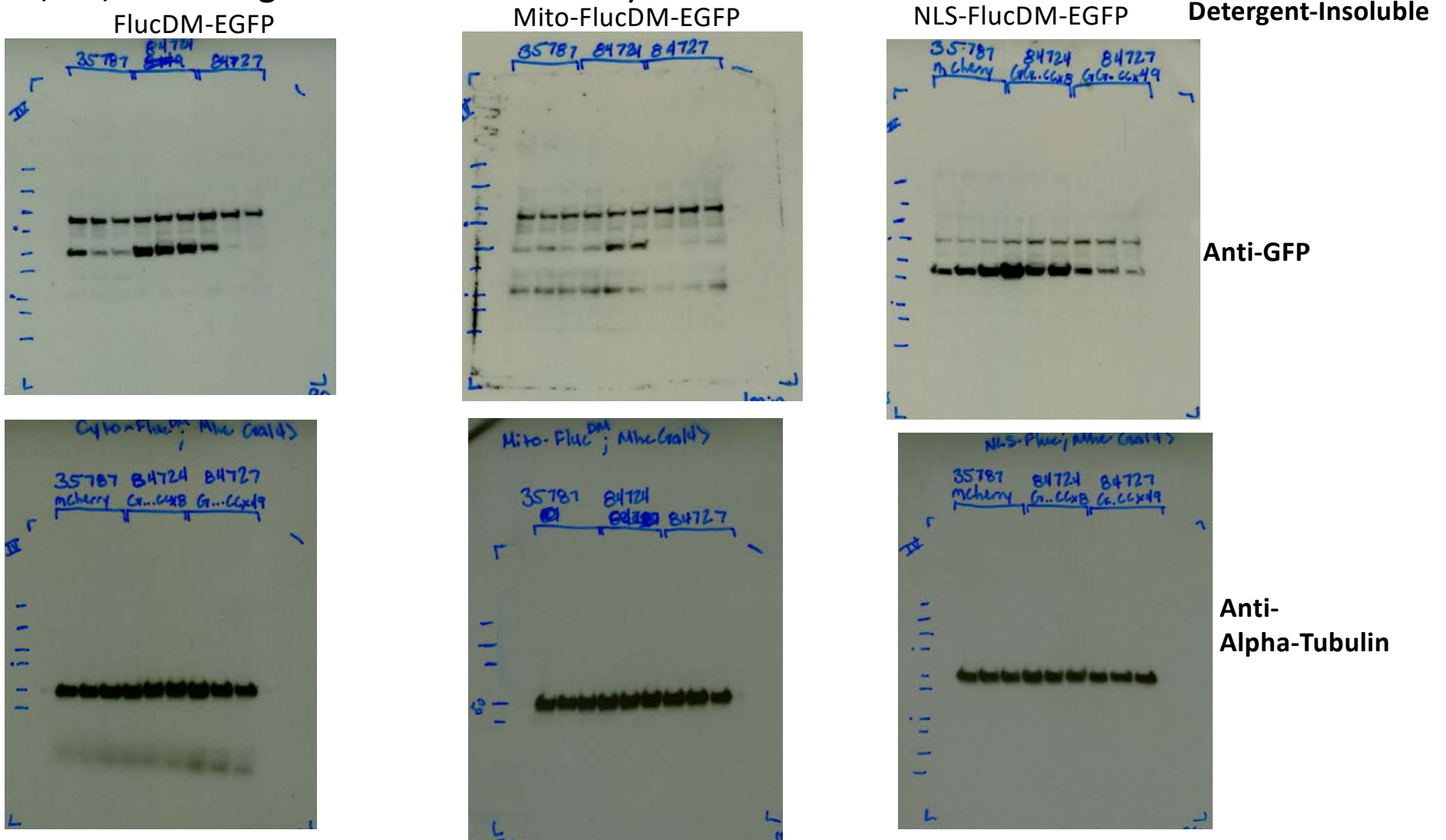


Figure 6d, 6e, 6f detergent-soluble hAtxn3 PolyQ

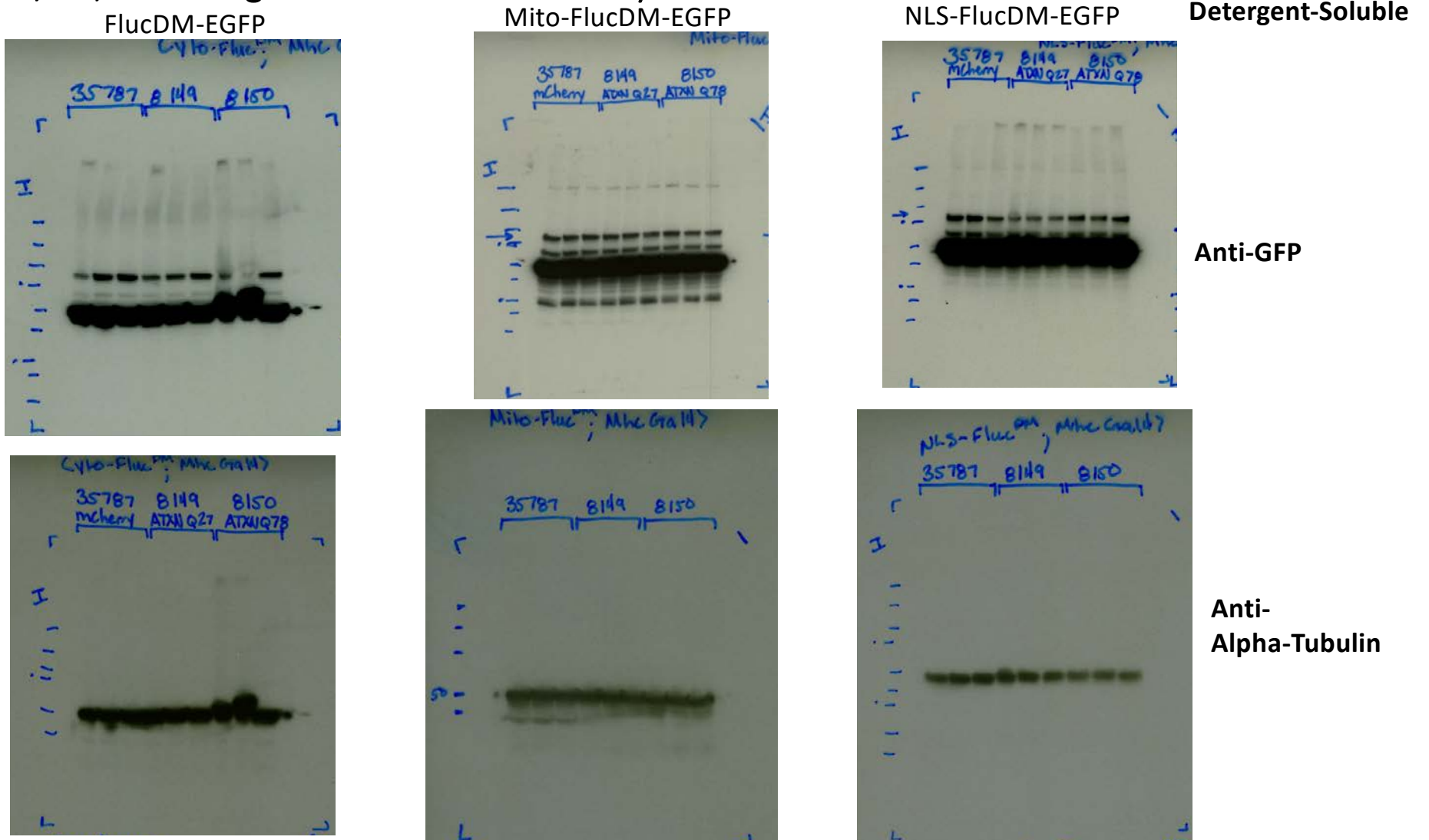
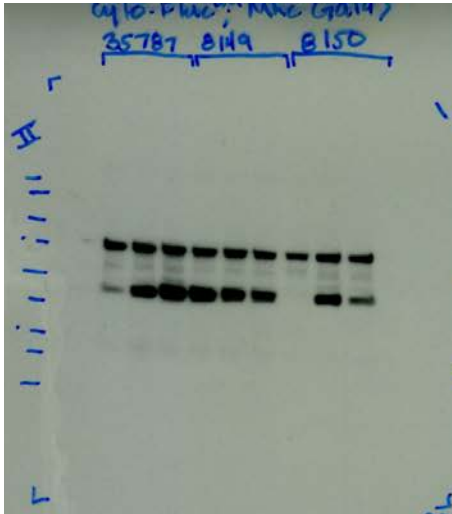
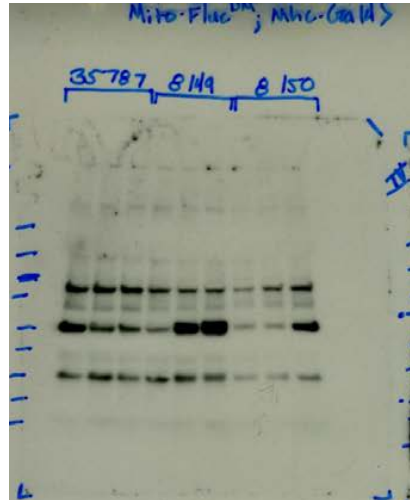


Figure 6d, 6e, 6f detergent-insoluble hAtxn3 PolyQ

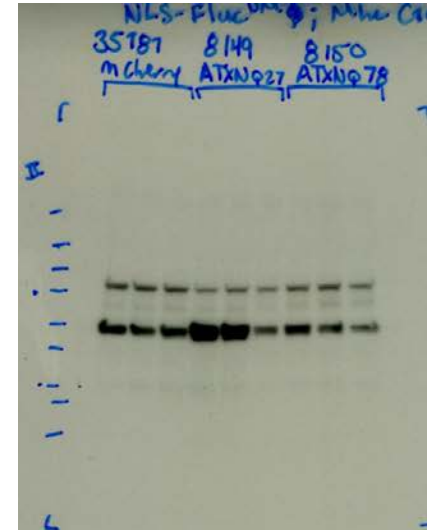
FlucDM-EGFP



Mito-FlucDM-EGFP

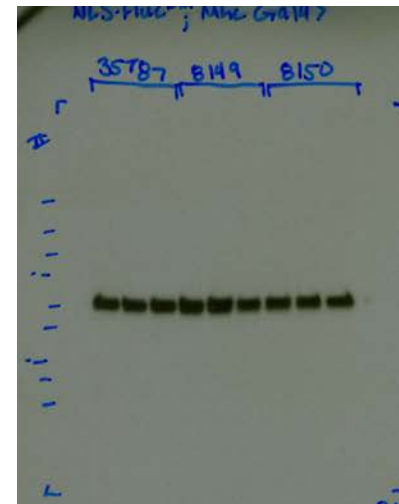
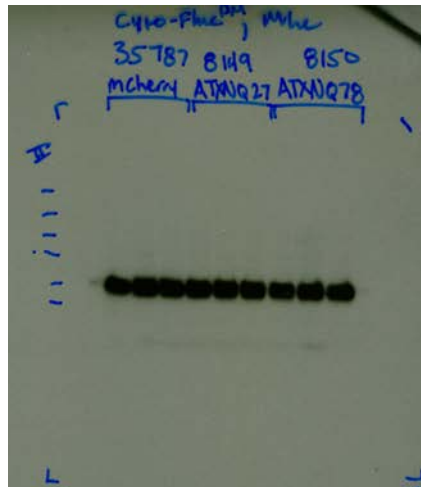


NLS-FlucDM-EGFP



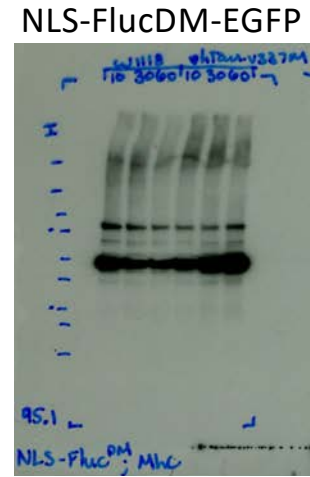
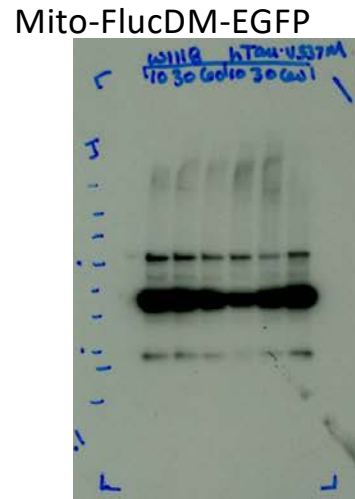
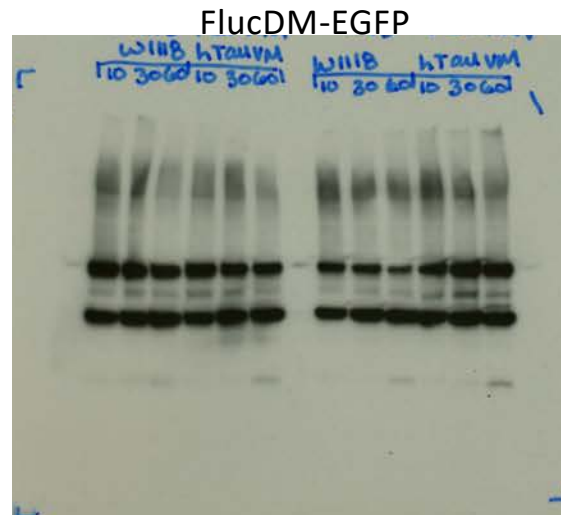
Detergent-Insoluble

Anti-GFP



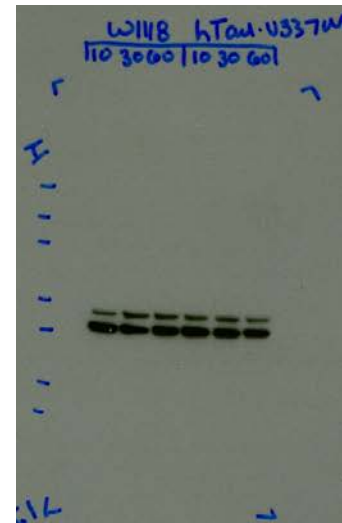
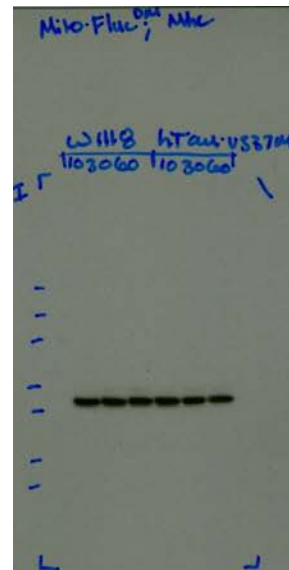
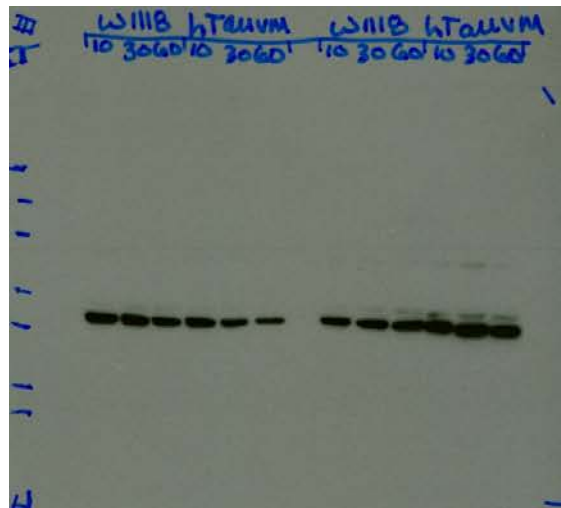
Anti-
Alpha-Tubulin

Figure 7a, 7b, 7c detergent-soluble hTau Heads



Detergent-Soluble

Anti-GFP



Anti-
Beta-Actin

Figure 7a, 7b, 7c detergent-insoluble hTau Heads

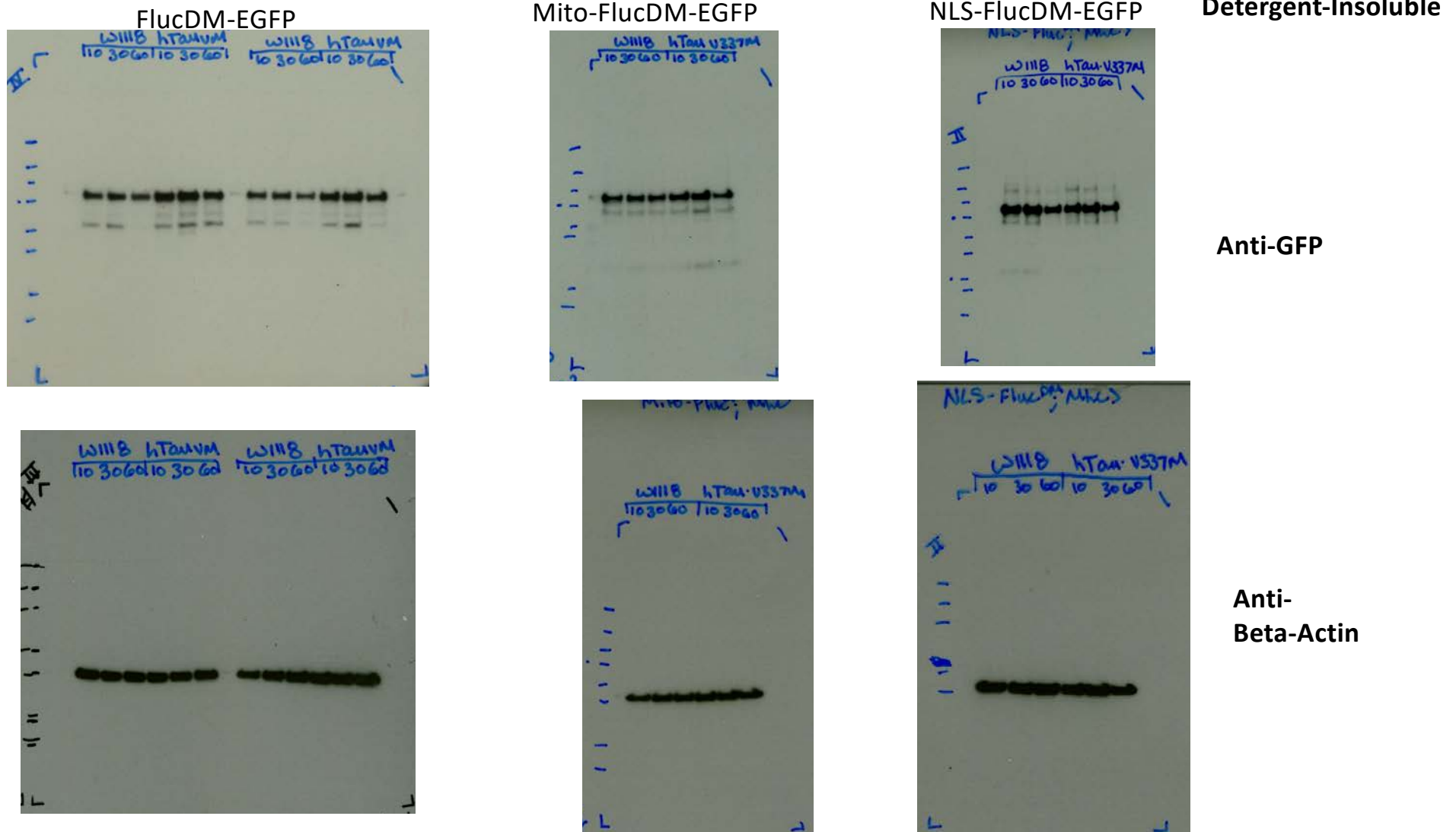


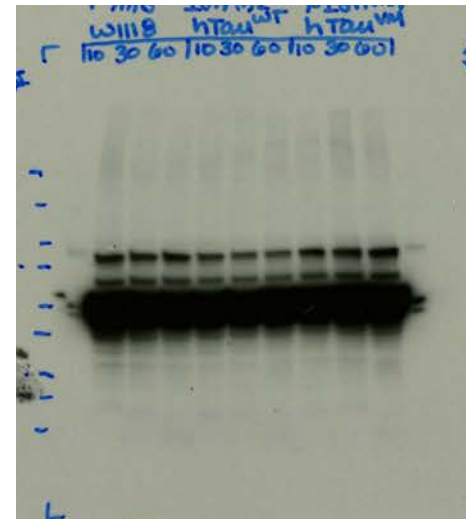
Figure 7d, 7e, 7f detergent-soluble hTau thoraces

FlucDM-EGFP

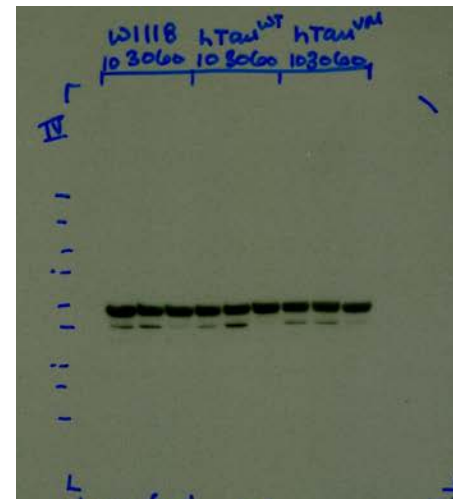
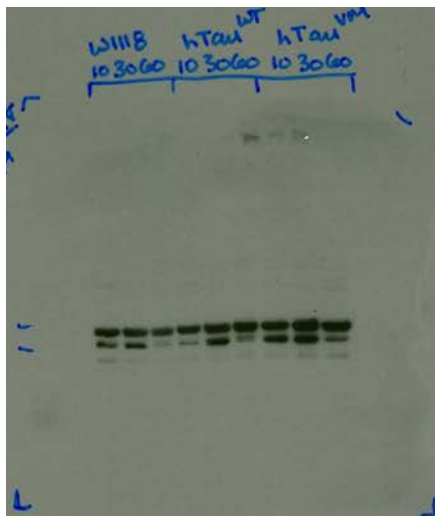
Mito-FlucDM-EGFP

NLS-FlucDM-EGFP

Detergent-Soluble



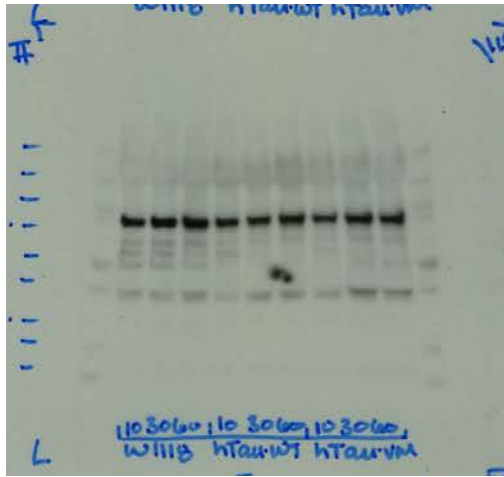
Anti-GFP



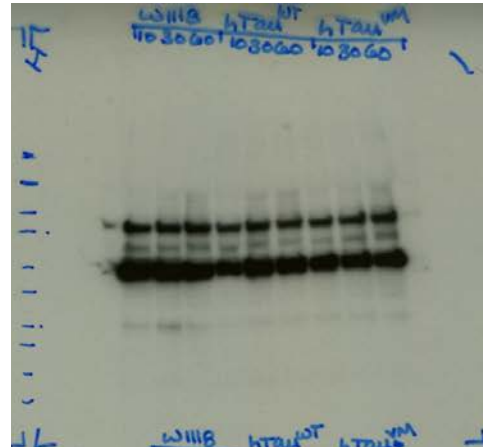
Anti-
Beta-Actin

Figure 7d, 7e, 7f detergent-insoluble hTau thoraces

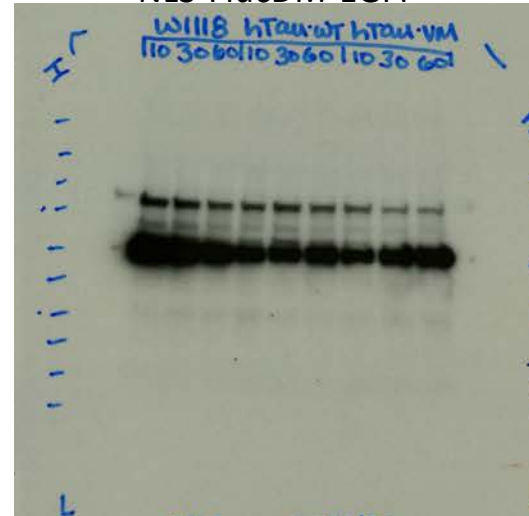
FlucDM-EGFP



Mito-FlucDM-EGFP

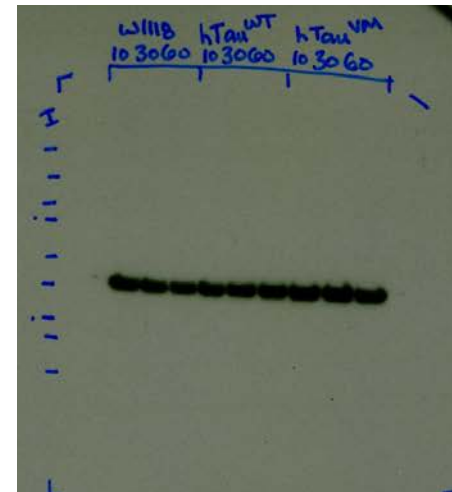
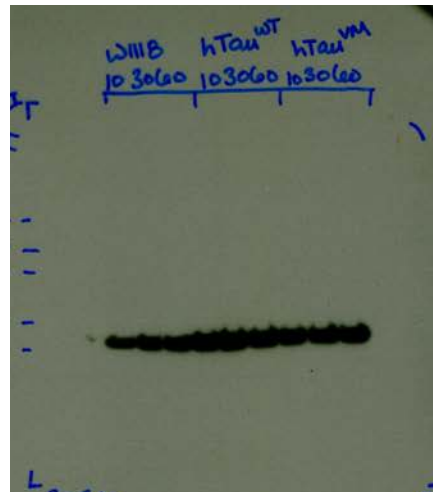
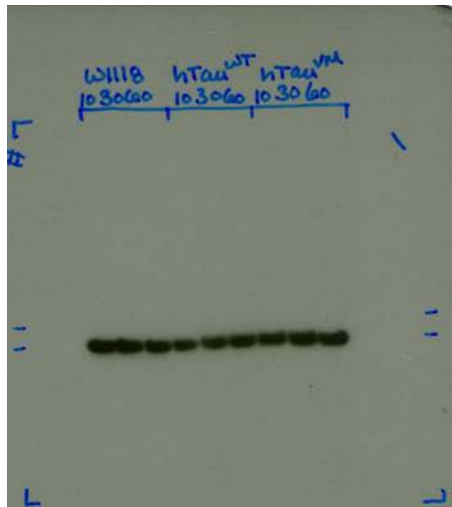


NLS-FlucDM-EGFP



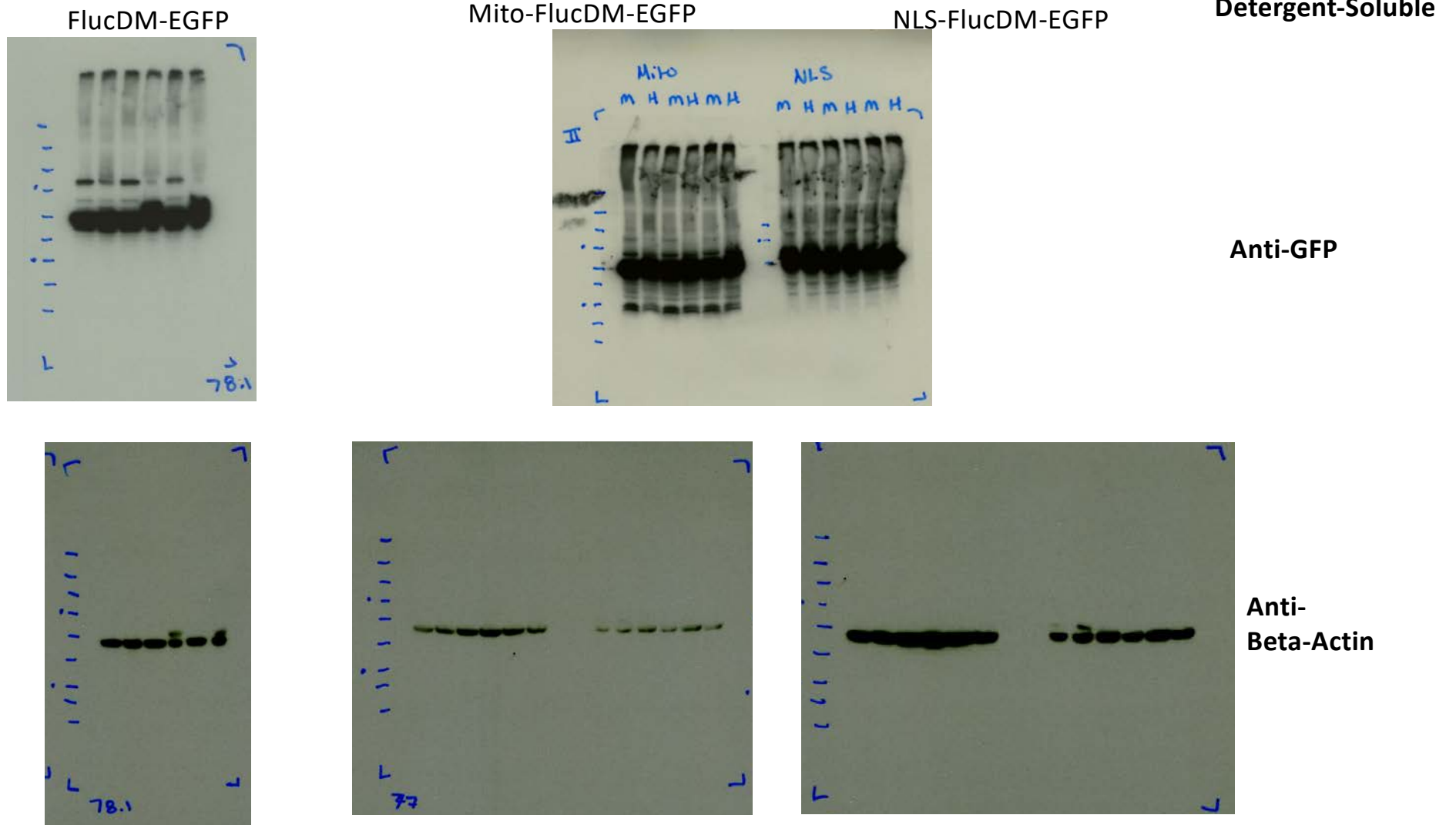
Detergent-Insoluble

Anti-GFP



Anti-
Beta-Actin

Supplementary Figure 1 HSP70 Knockdown

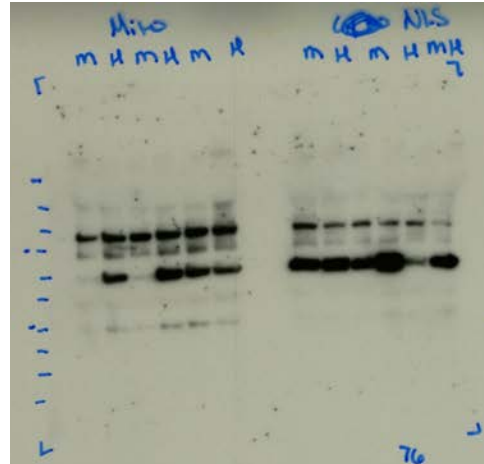


Supplementary Figure 1 HSP70 Knockdown

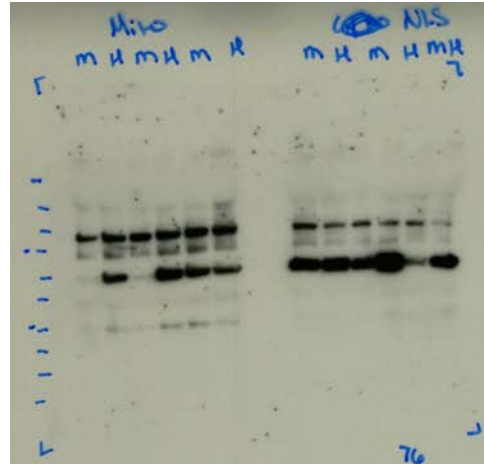
FlucDM-EGFP



Mito-FlucDM-EGFP

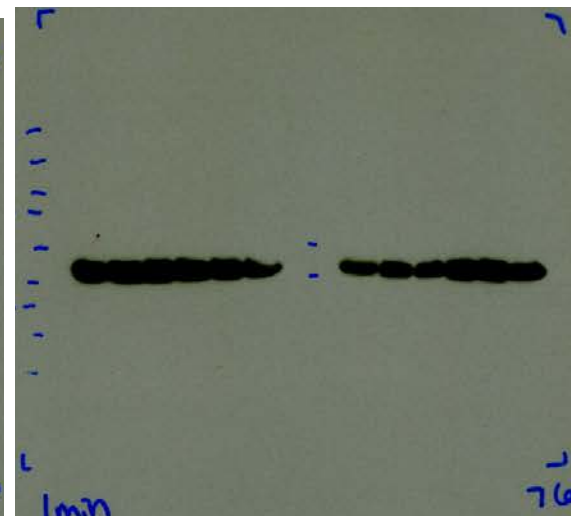
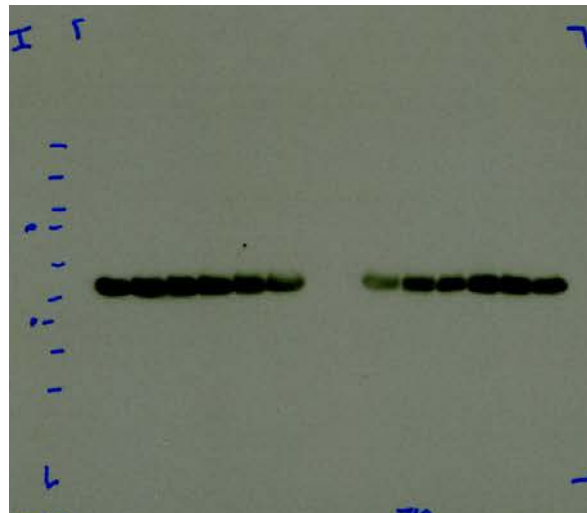
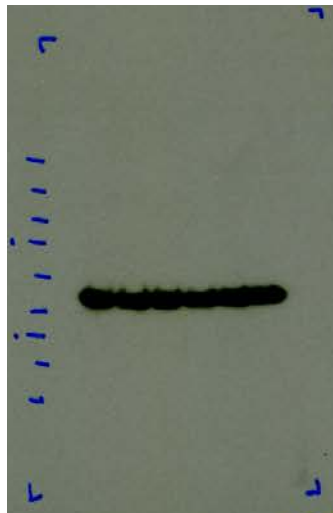


NLS-FlucDM-EGFP



Detergent-Insoluble

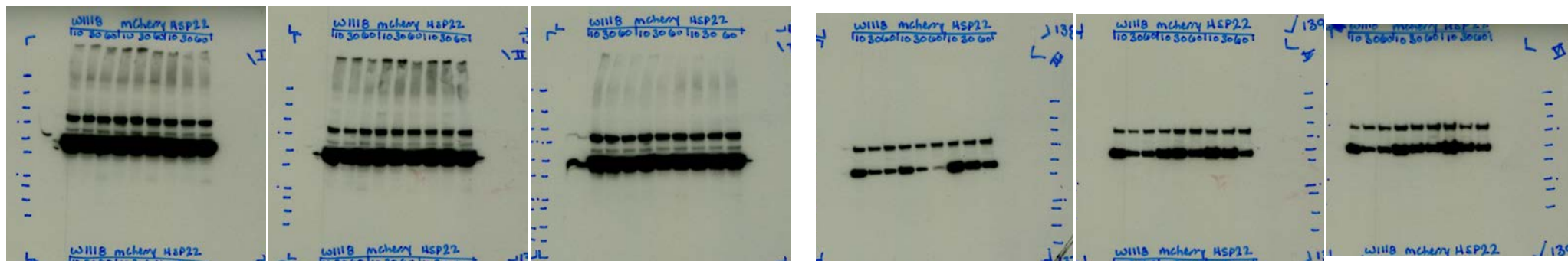
Anti-GFP



Anti-Beta-Actin

Supplementary Figure 2: FlucDM-EGFP HSP22

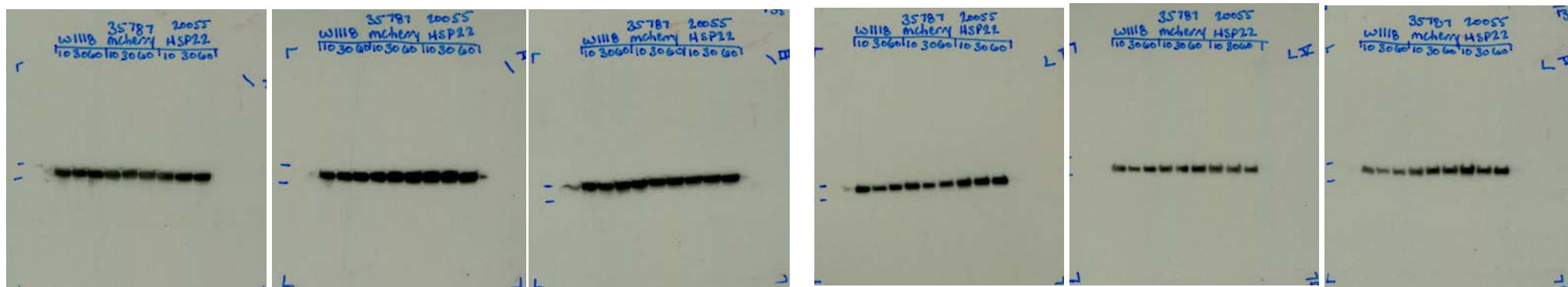
Anti-GFP



Detergent-Soluble

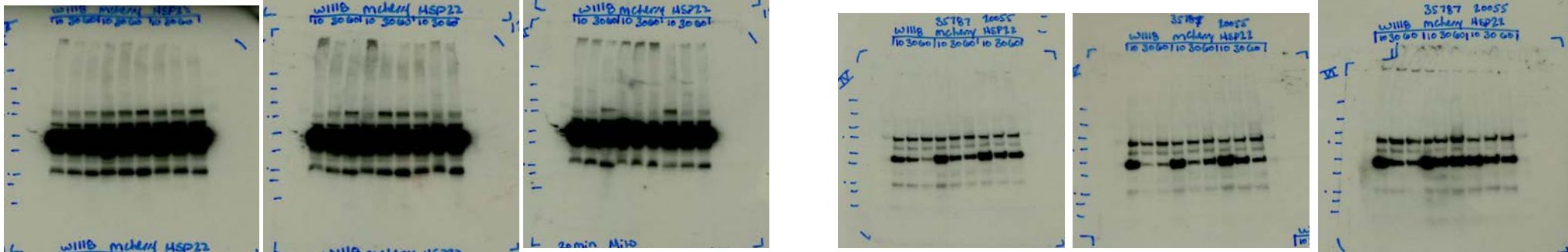
Anti-Alpha Tubulin

Detergent-Insoluble



Supplementary Figure 2: mito-FlucDM-EGFP HSP22

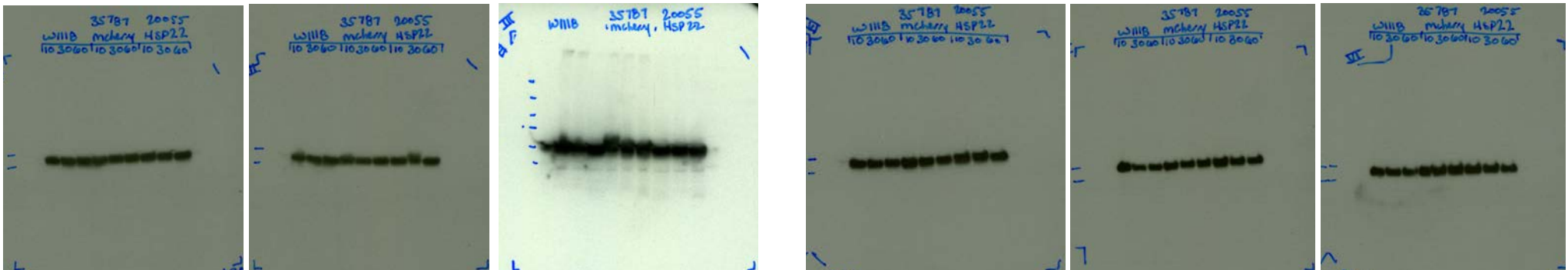
Anti-GFP



Detergent-Soluble

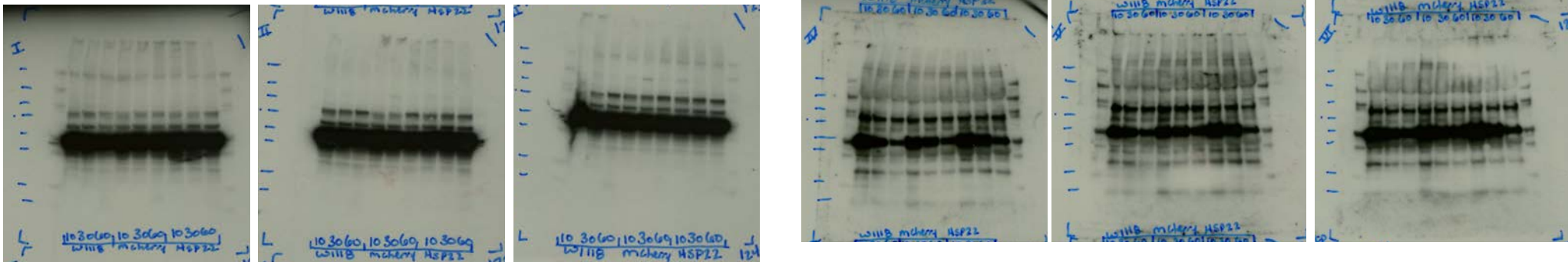
Anti-Alpha-Tubulin

Detergent-Insoluble



Supplementary Figure 2: NLS-FlucDM-EGFP HSP22

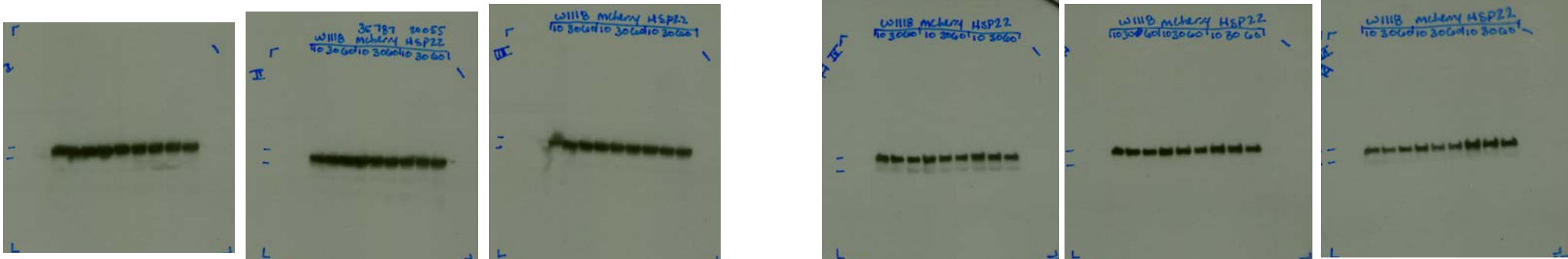
Anti-GFP



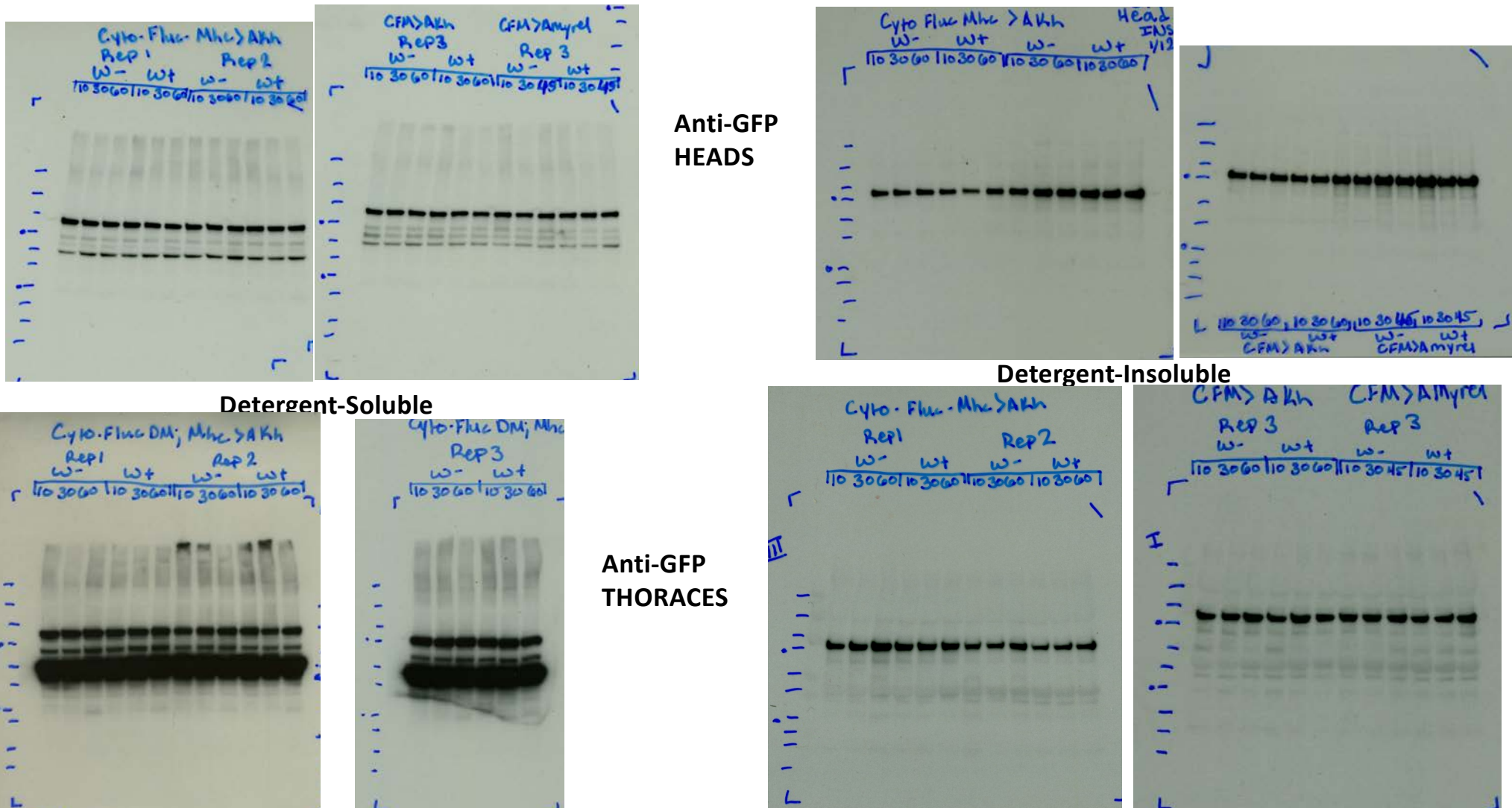
Detergent-Soluble

Anti-Alpha-Tubulin

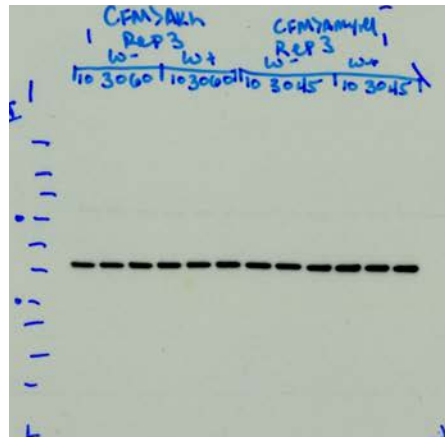
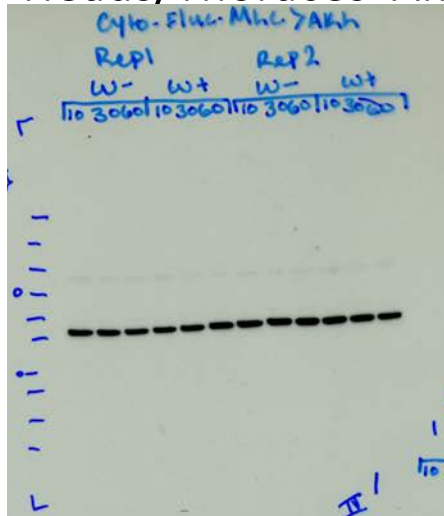
Detergent-Insoluble



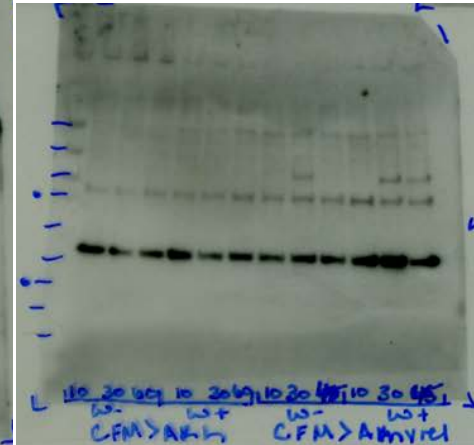
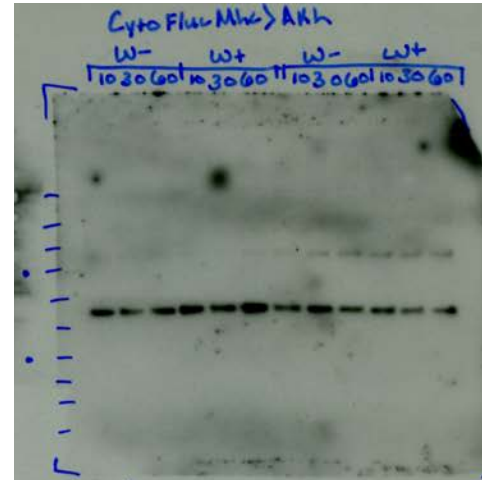
Supplementary Figure 3: Additional Blots Used in Quantification FlucDM-EGFP Akh Heads/Thoraces Anti-GFP



Supplementary Figure 3: Additional Blots Used in Quantification FlucDM-EGFP Akh Heads/Thoraces Anti-Beta Actin

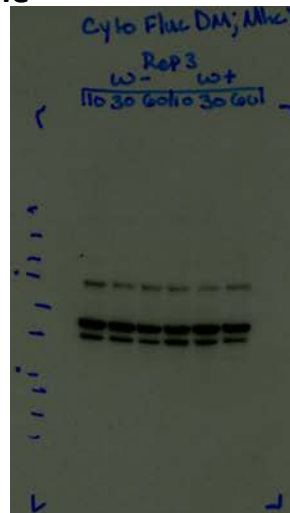
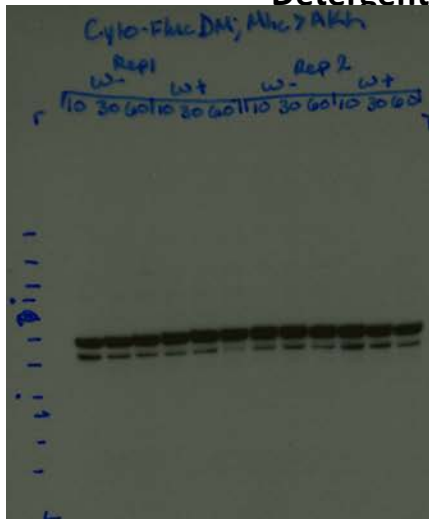


Anti-Beta Actin HEADS

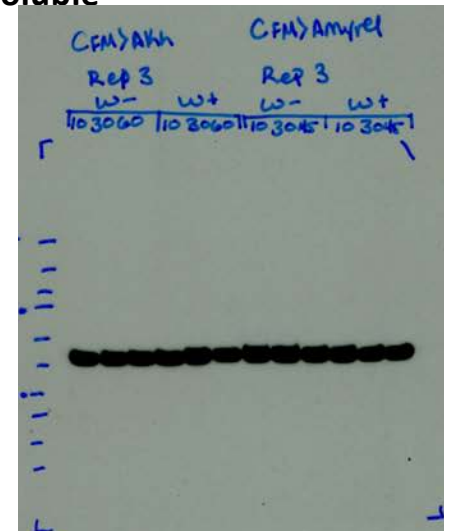
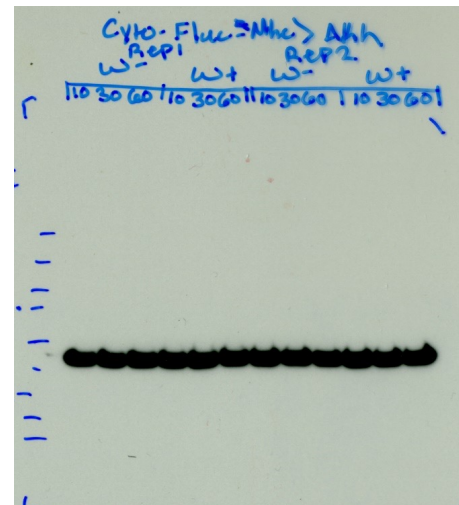


Detergent-Soluble

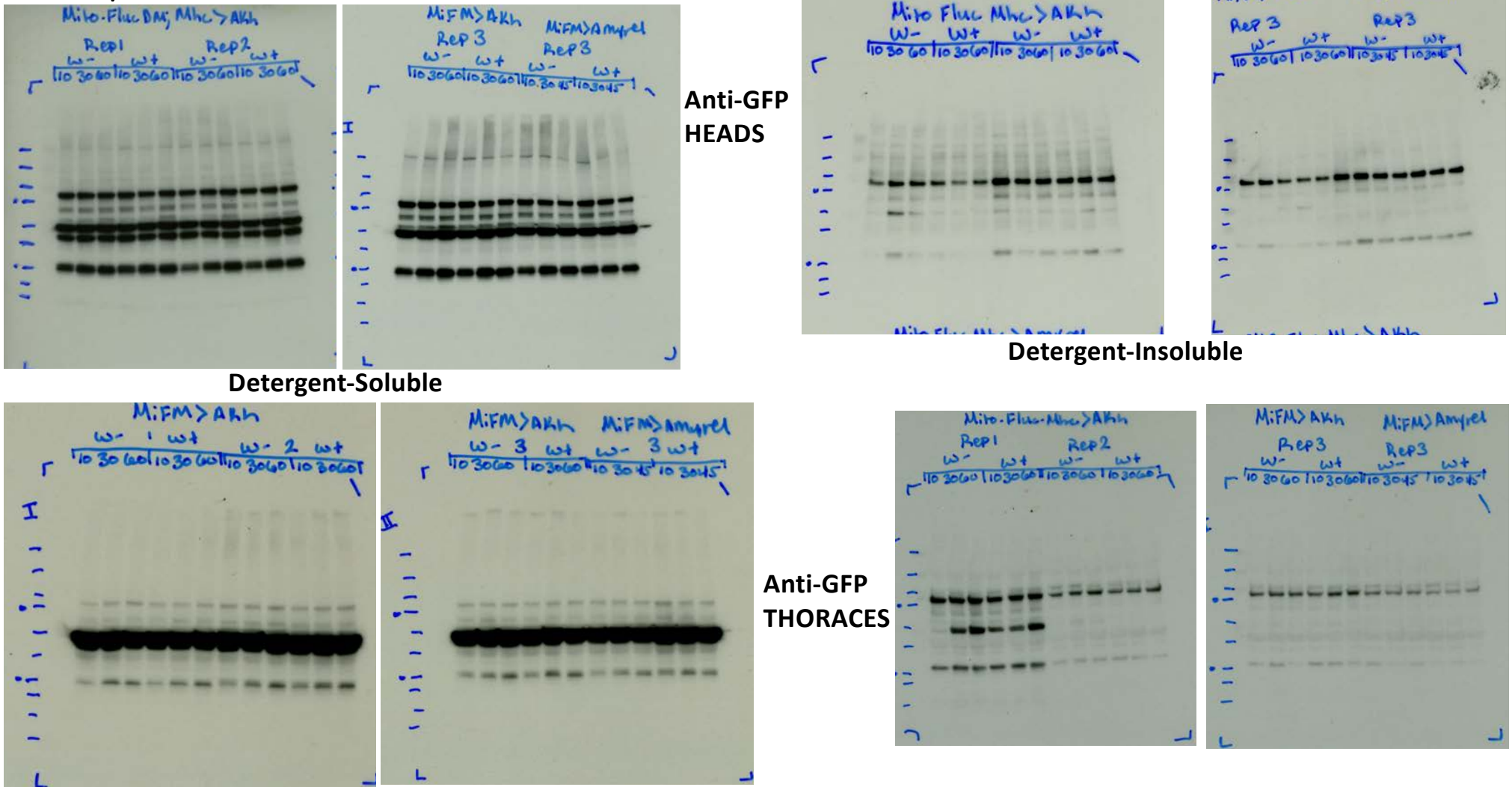
Detergent-Insoluble



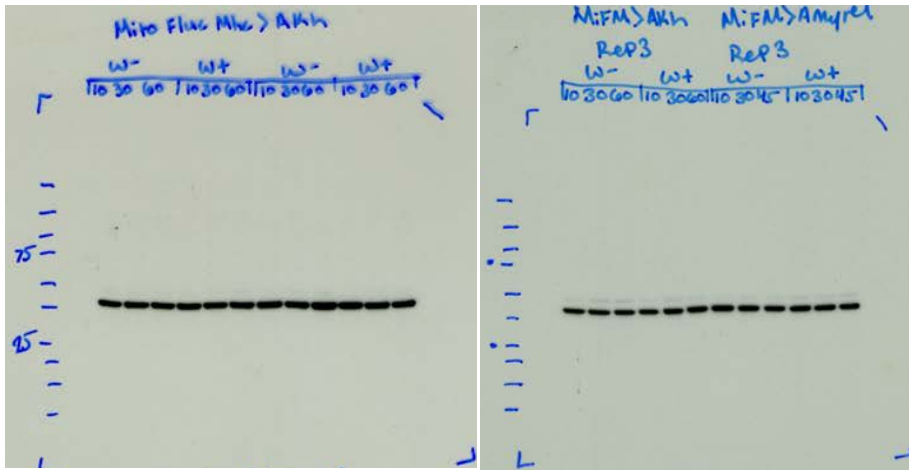
Anti-Beta Actin THORACES



Supplementary Figure 3: Additional Blots Used in Quantification mito-FlucDM-EGFP Akh Heads/Thoraces Anti-GFP

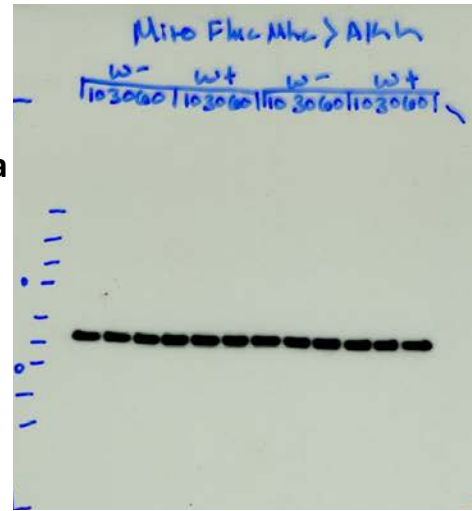


Supplementary Figure 3: Additional Blots Used in Quantification mito-FlucDM-EGFP Akh Heads/Thoraces Anti-Beta Actin

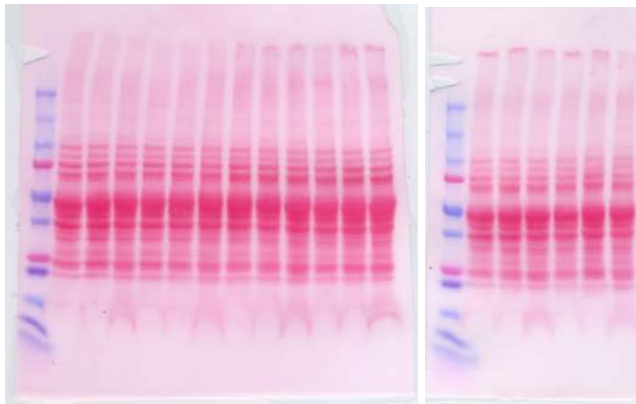
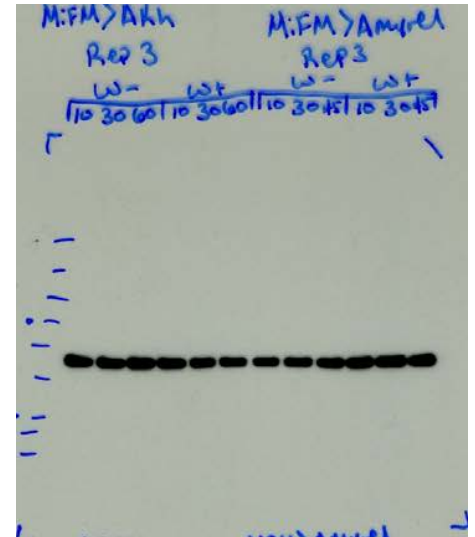


Detergent-Soluble

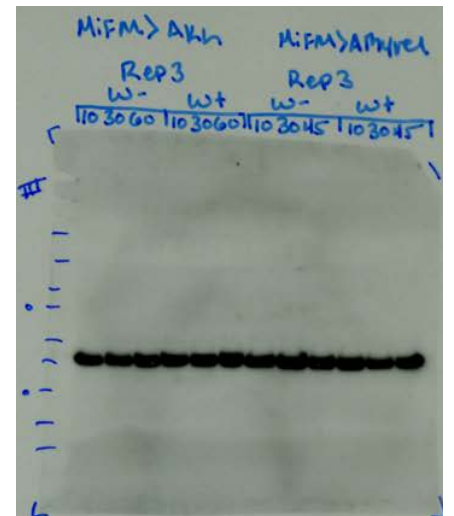
Anti-Beta Actin HEADS



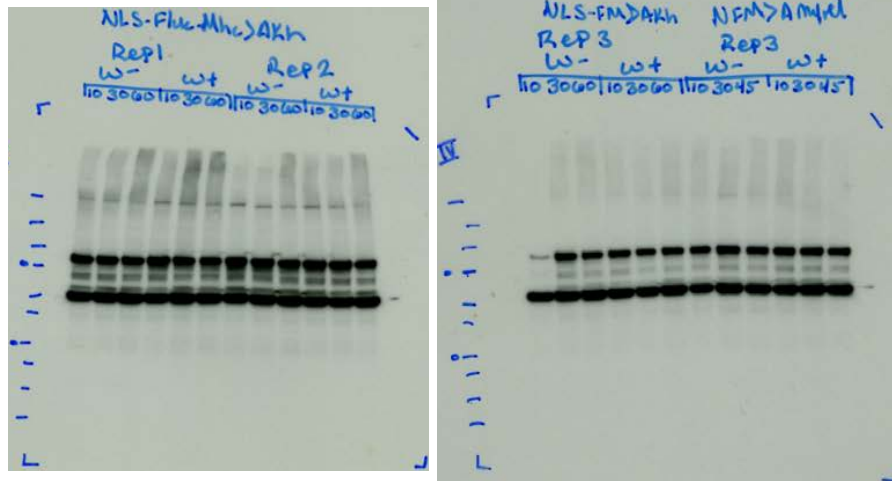
Detergent-Insoluble



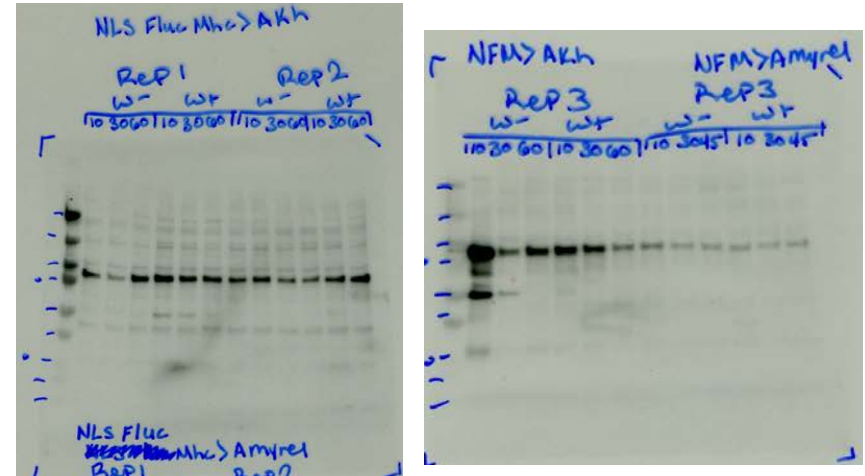
Anti-Beta Actin THORACES



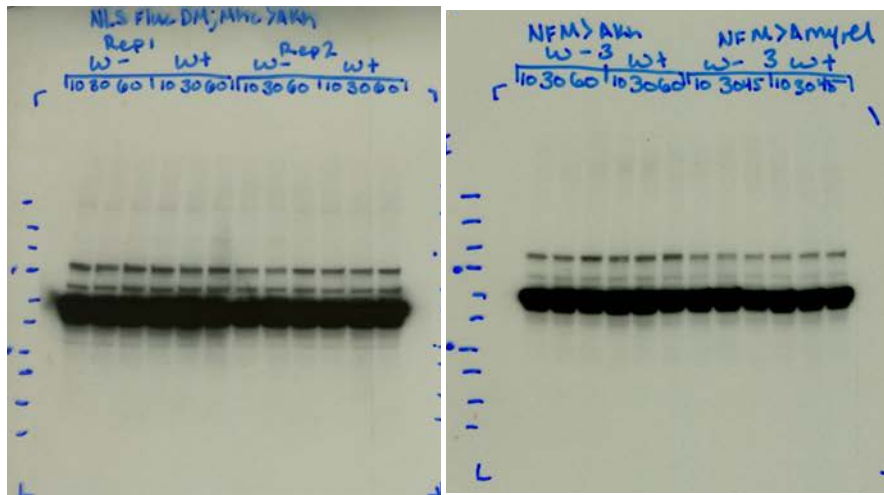
Supplementary Figure 3: Additional Blots Used in Quantification NLS-FlucDM-EGFP Akh Heads/Thoraces Anti-GFP



Detergent-Soluble



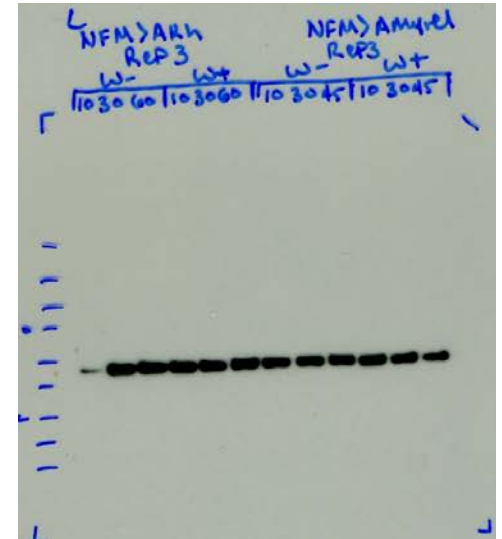
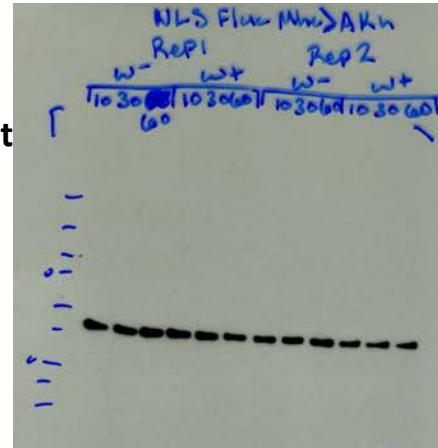
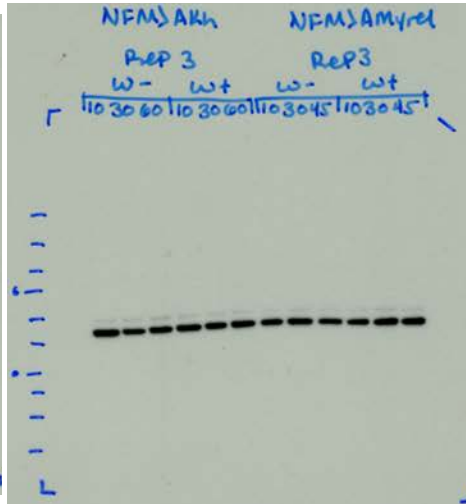
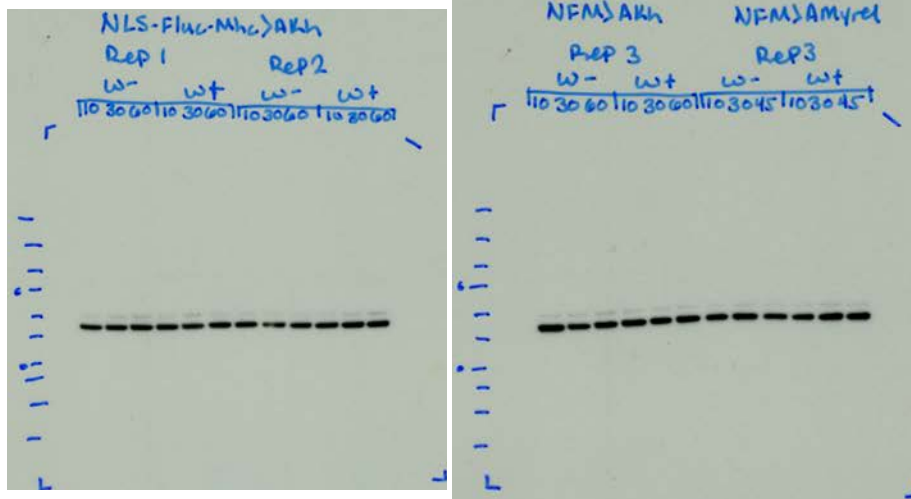
Detergent-Insoluble



Anti-GFP THORACES

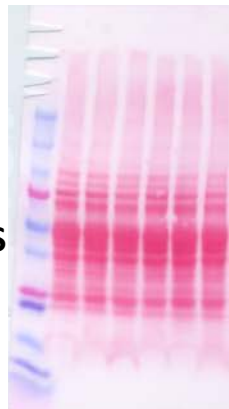
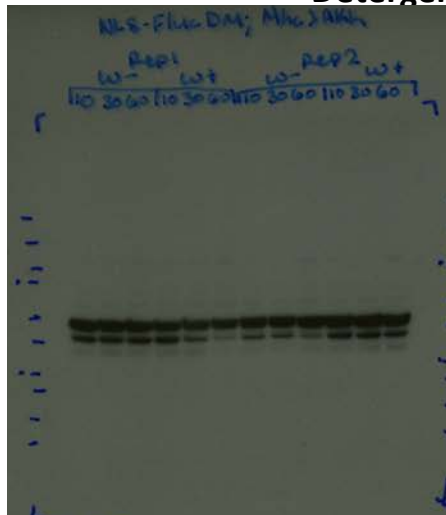


Supplementary Figure 3: Additional Blots Used in Quantification NLS-FlucDM-EGFP Akh Heads/Thoraces Anti-Beta Actin



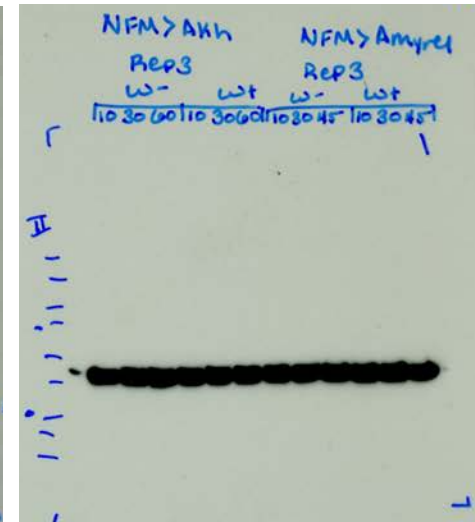
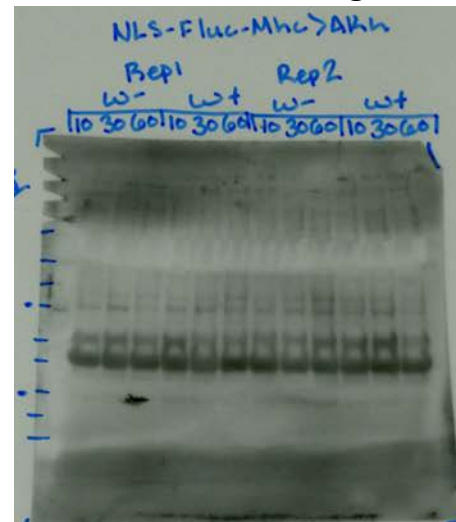
Anti-Beta Actin HEADS

Detergent-Soluble

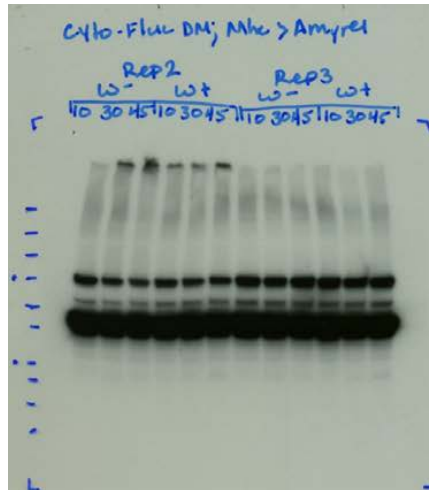
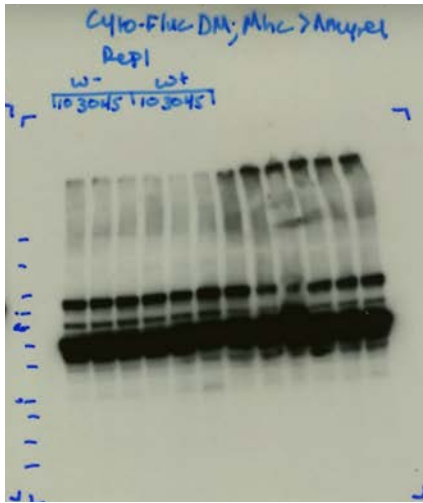


Anti-Beta Actin THORACES

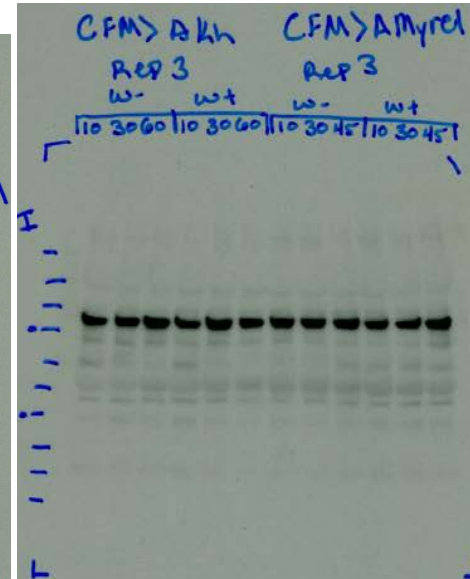
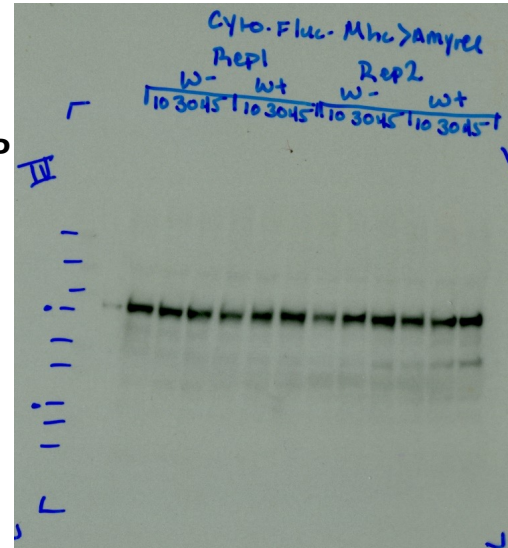
Detergent-Insoluble



Blots Used in Quantitation for Supplementary Figure 5: FlucDM-EGFP Amyrel Thoraces

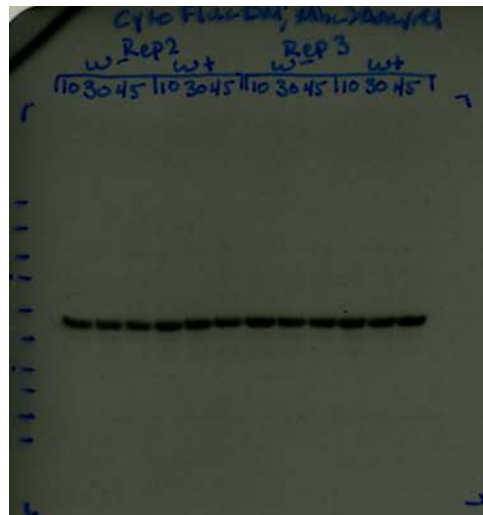
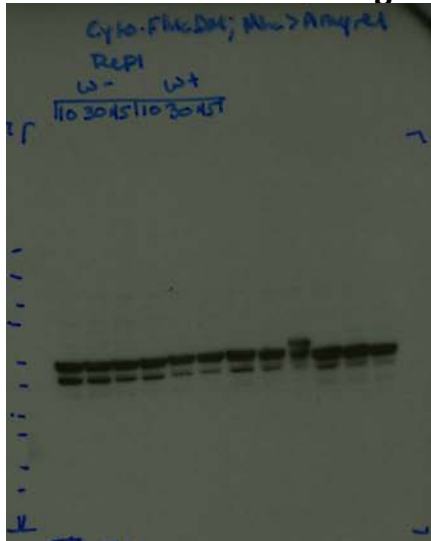


Anti-GFP

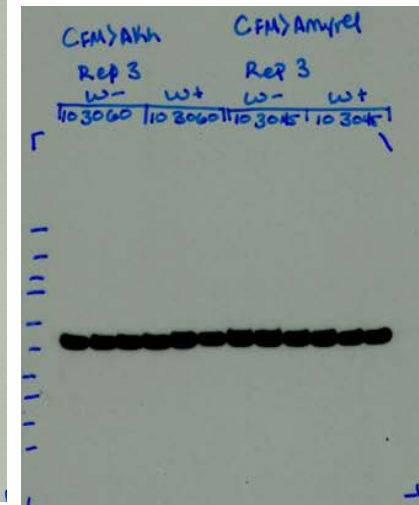
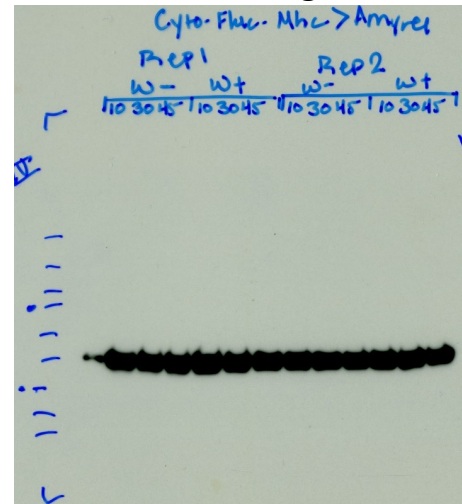


Detergent-Soluble

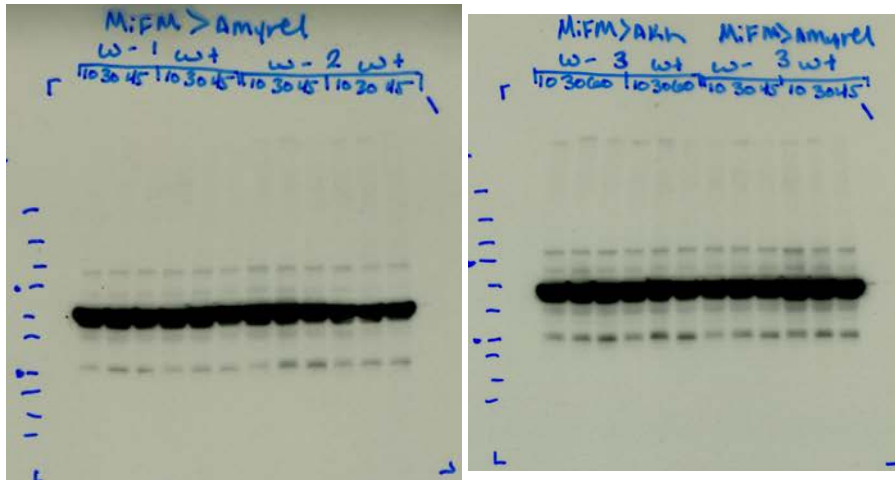
Detergent-Insoluble



Anti-Beta Actin

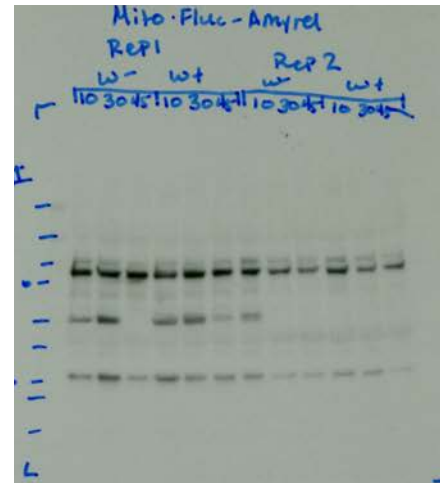


Blots Used in Quantitation for Supplementary Figure 5: mito-FlucDM-EGFP Amyrel Thoraces

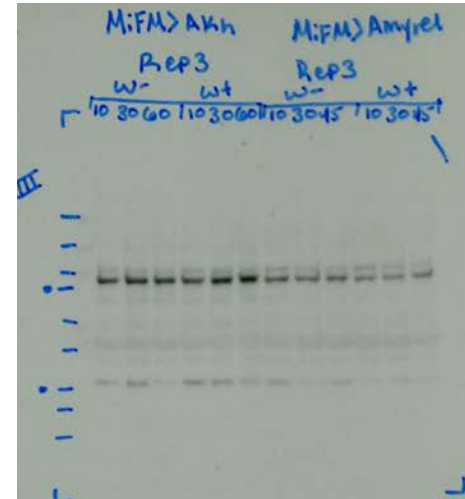


Detergent-Soluble

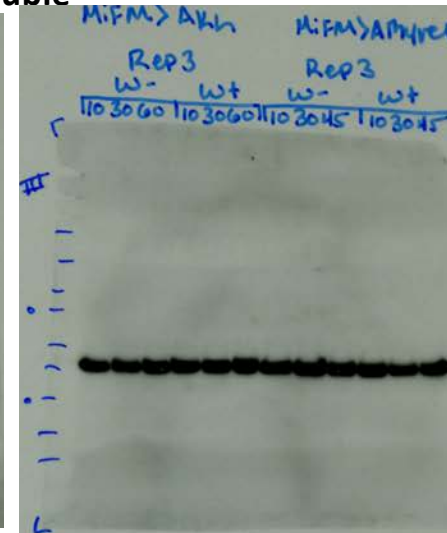
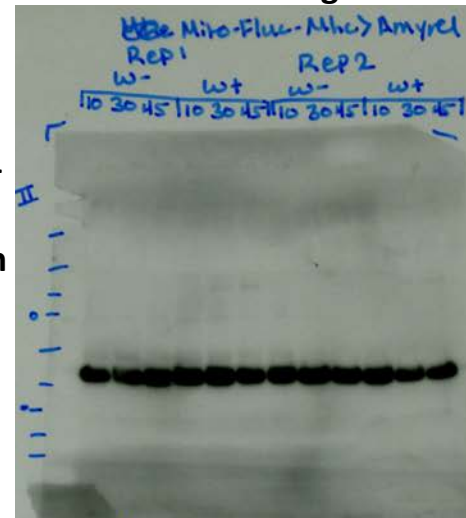
Anti-GFP



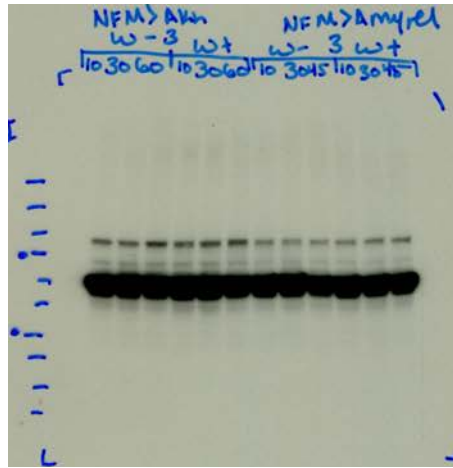
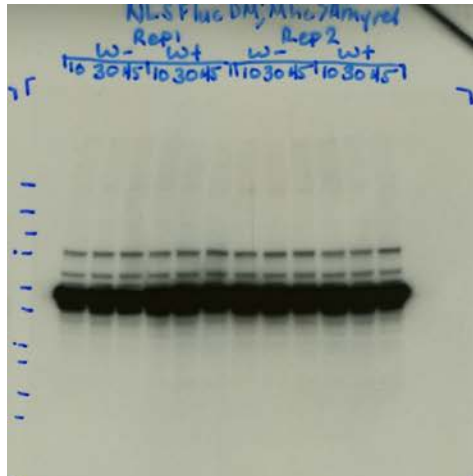
Detergent-Insoluble



Anti-Beta Actin

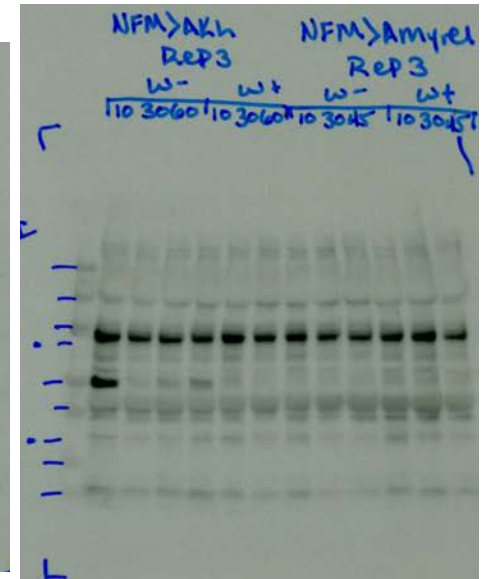
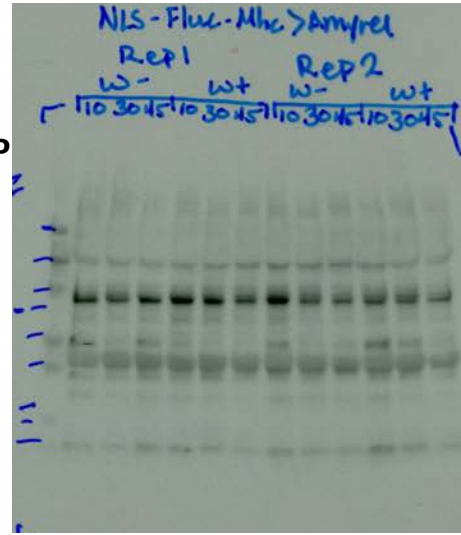


Blots Used in Quantitation for Supplementary Figure 5:
NLS-FlucDM-EGFP Amyrel Thoraces

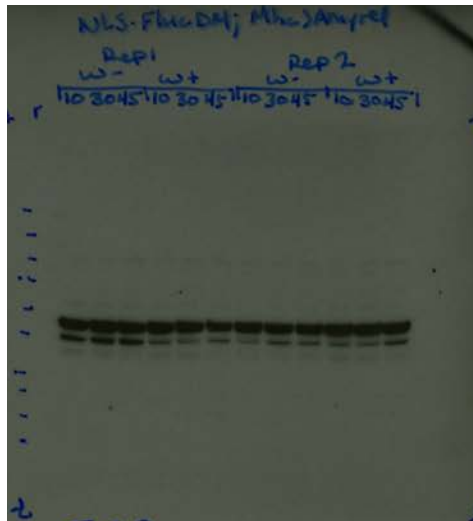


Anti-GFP

Detergent-Soluble



Detergent-Insoluble



Anti-
Beta
Actin

