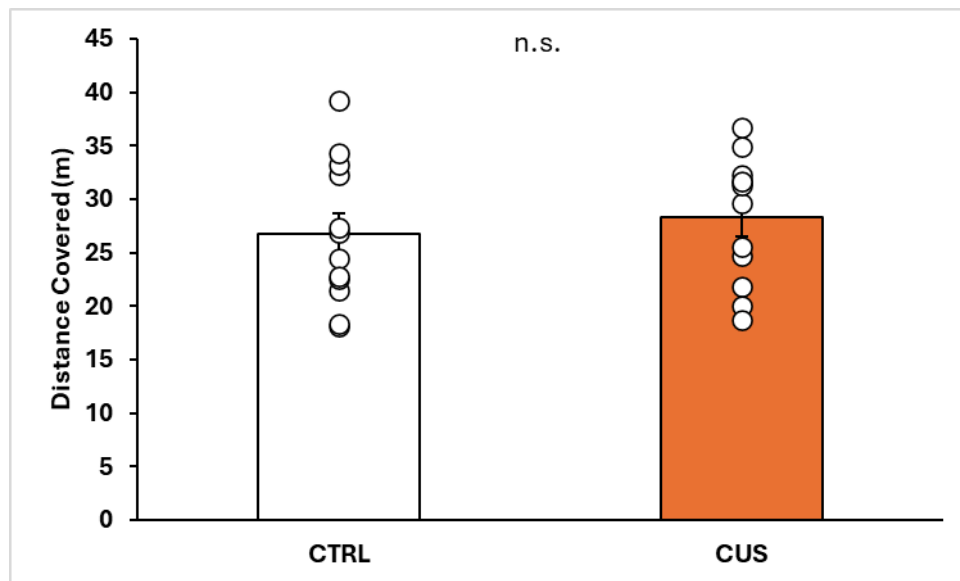


## Supplementary Materials

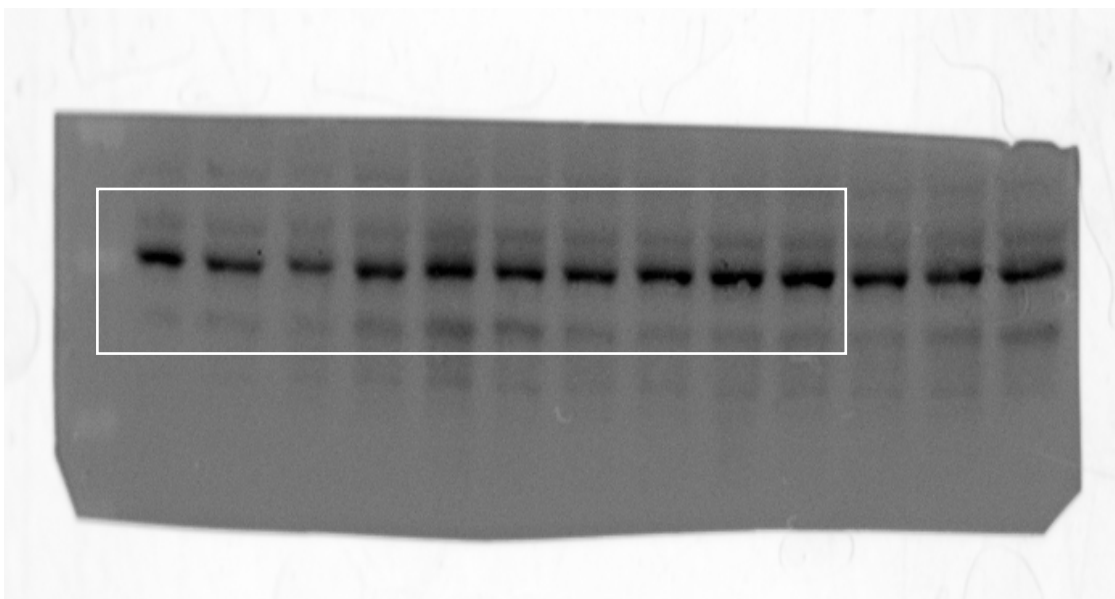


**Supplementary Figure 1. Evaluation of locomotor activity in control mice and CUS-exposed mice.** No differences were observed in locomotor activity between control mice and CUS-exposed mice (n=12 each condition). Student's *t* test. Each dot represents one animal sample. All data are reported as mean  $\pm$  s.e.m. n.s. not significant.

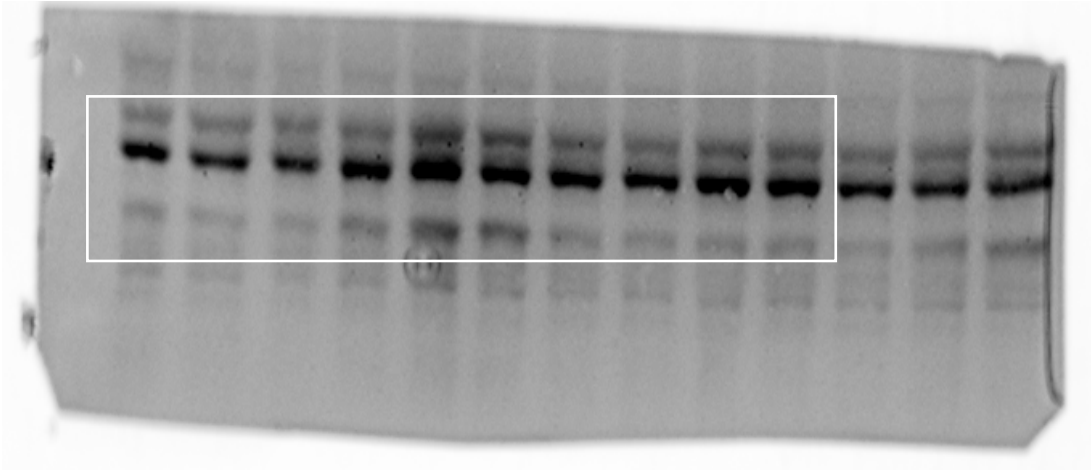
**Uncropped gels: samples beyond the white squares are unrelated to the experiment.**

**Figure 1**

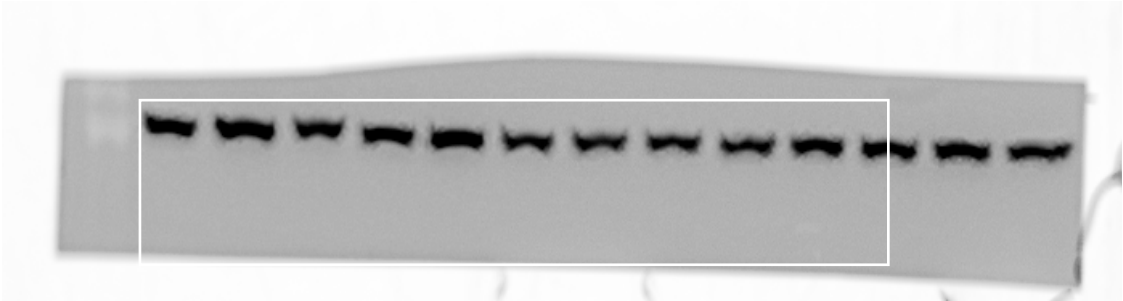
WB ventral hippocampus



pERK

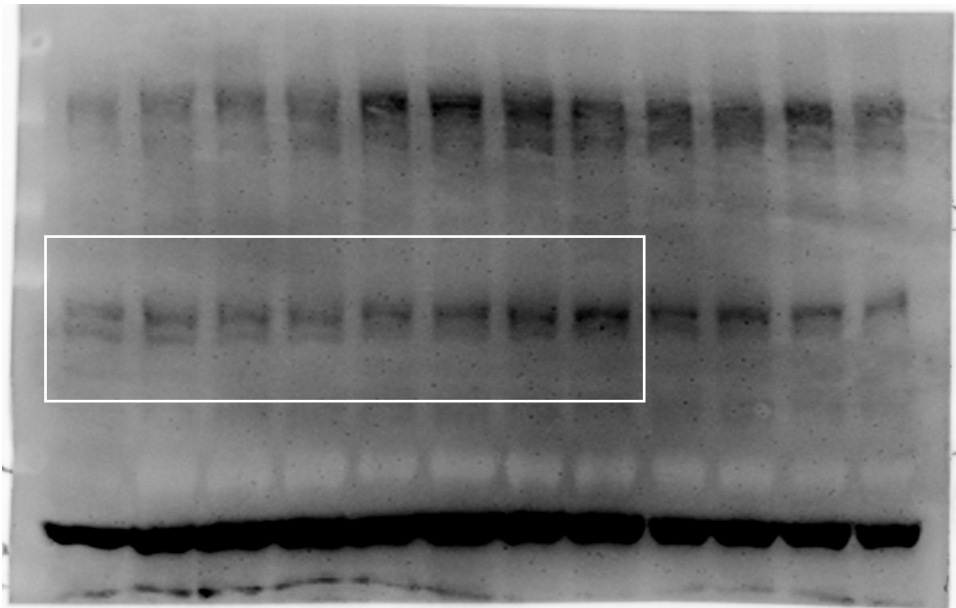


ERK

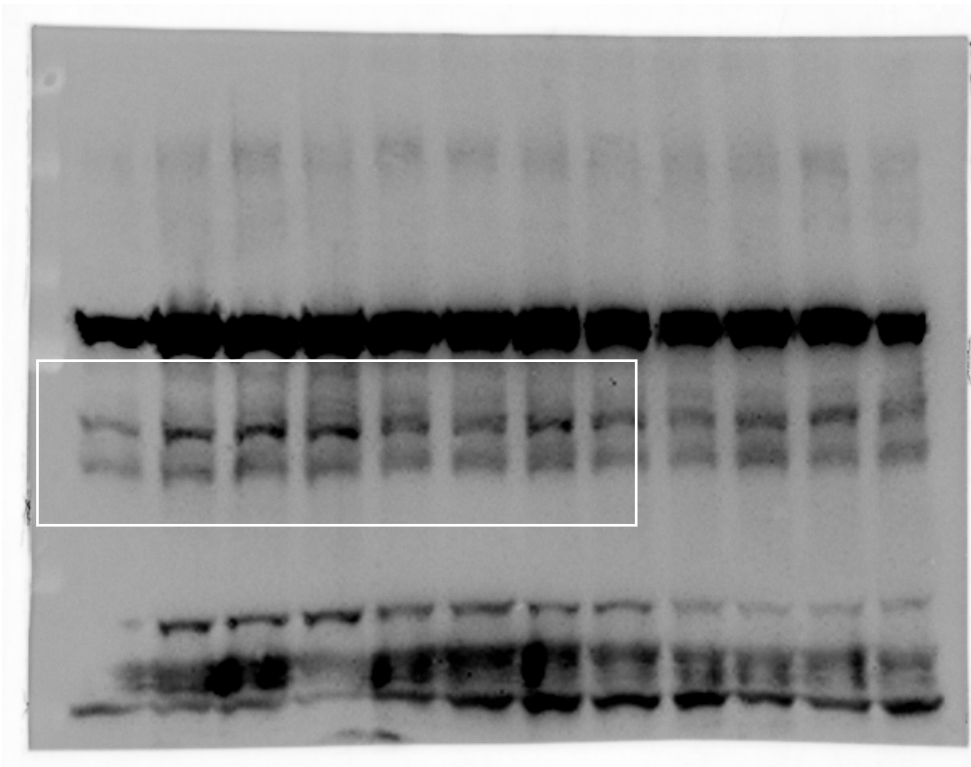


Hsp90

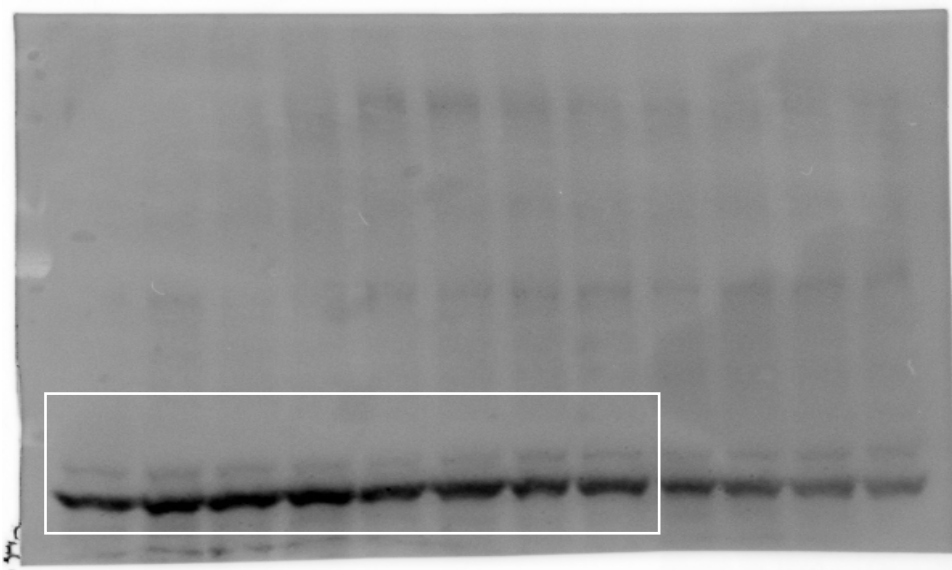
WB prefrontal cortex



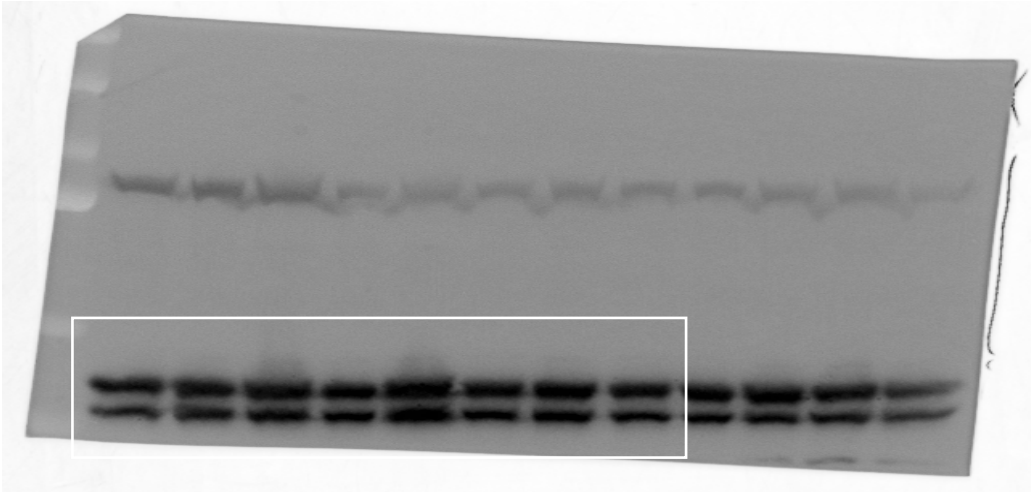
pNf-kB



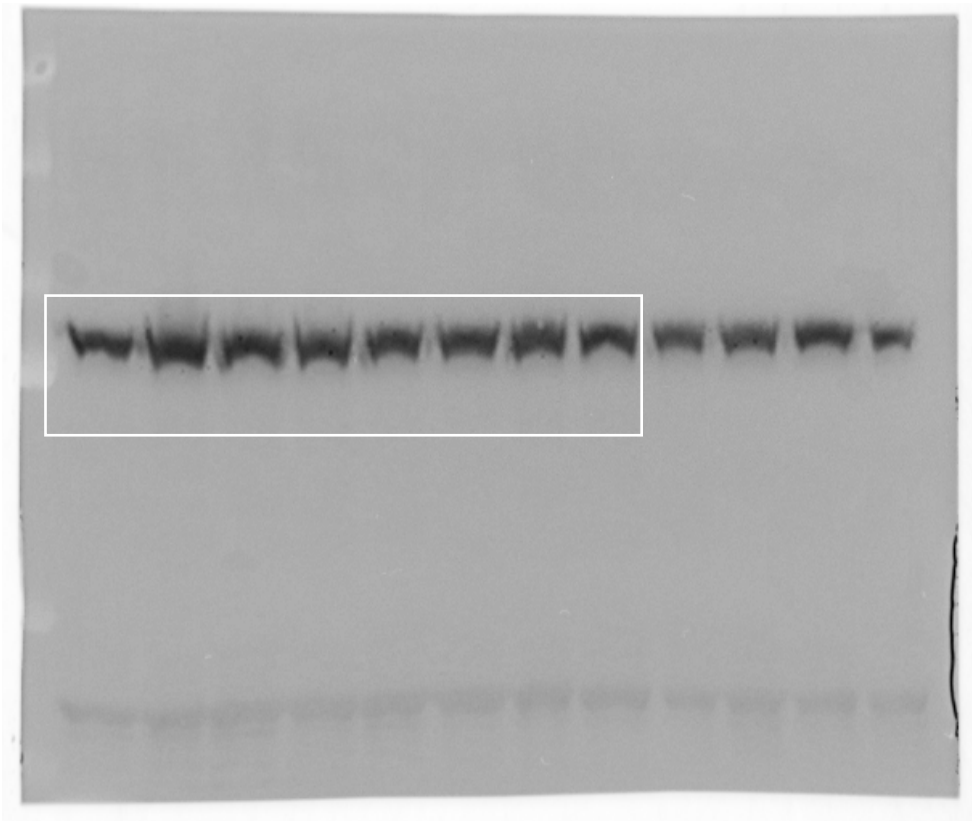
Nf-kB



pERK

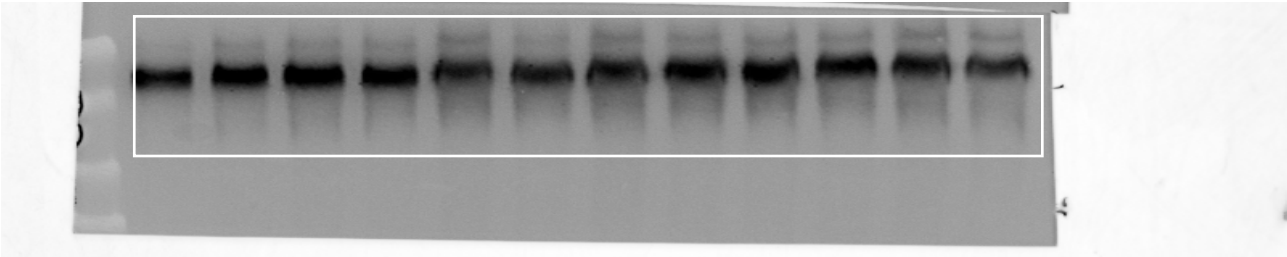


ERK

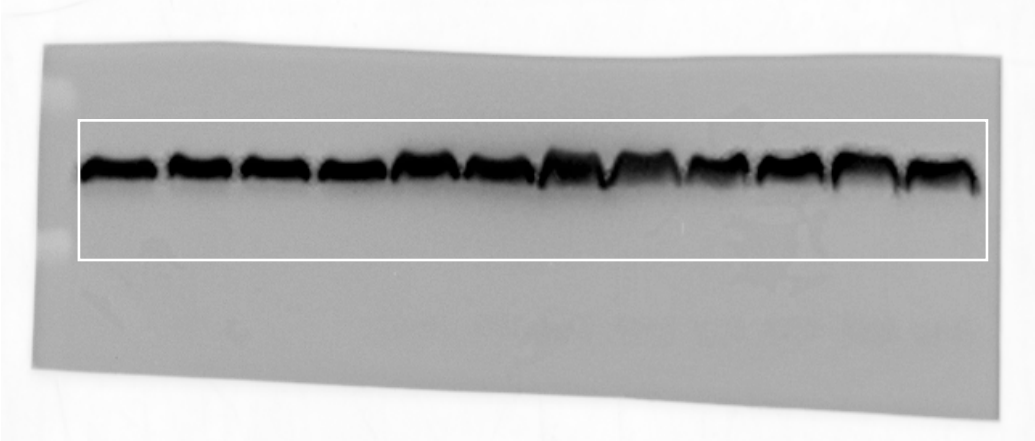


Hsp90

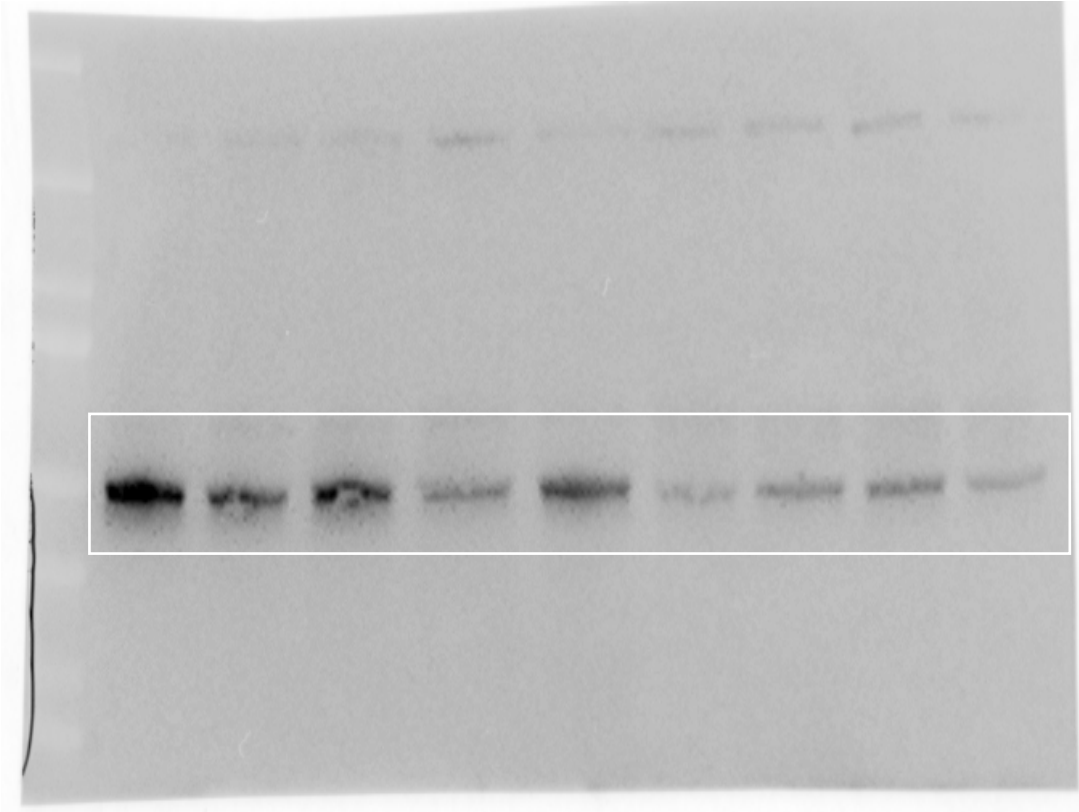
Figure 5



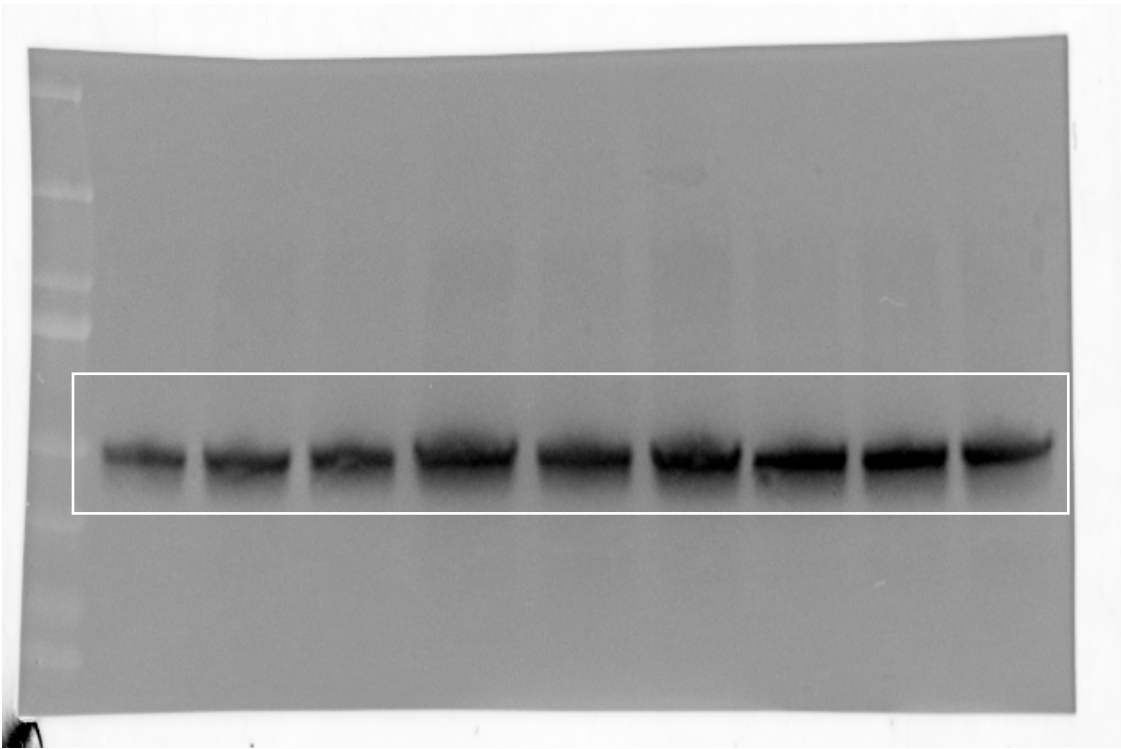
PSD-95



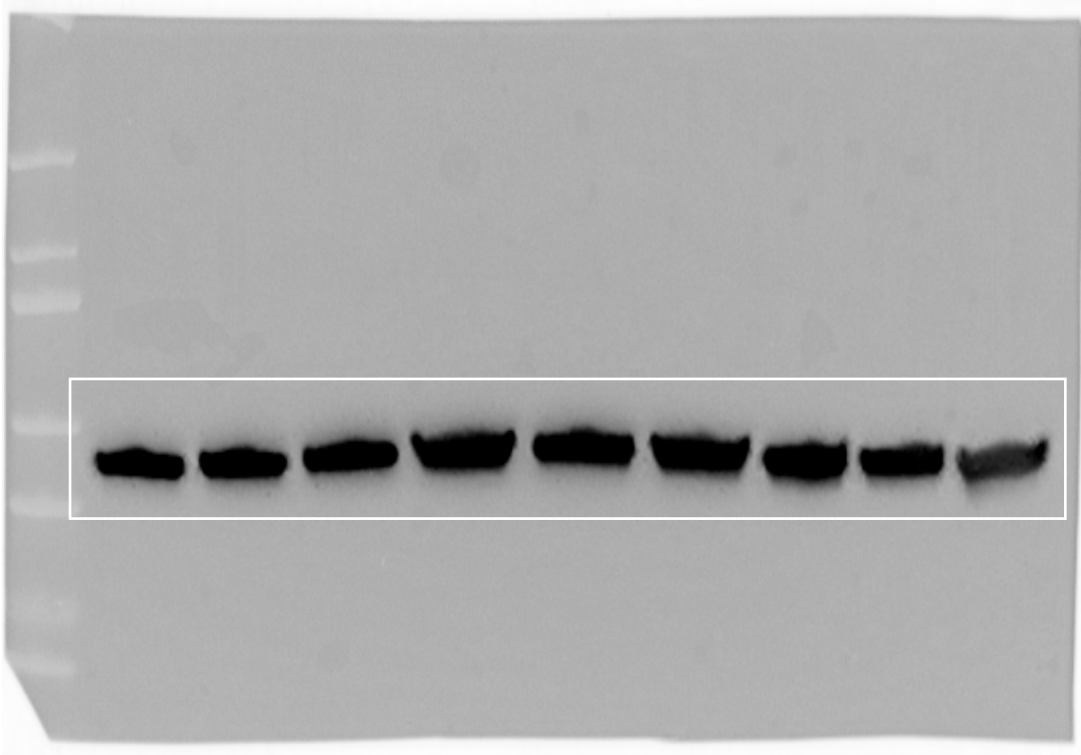
Actin



pGSK3β



GSK3 $\beta$



Actin