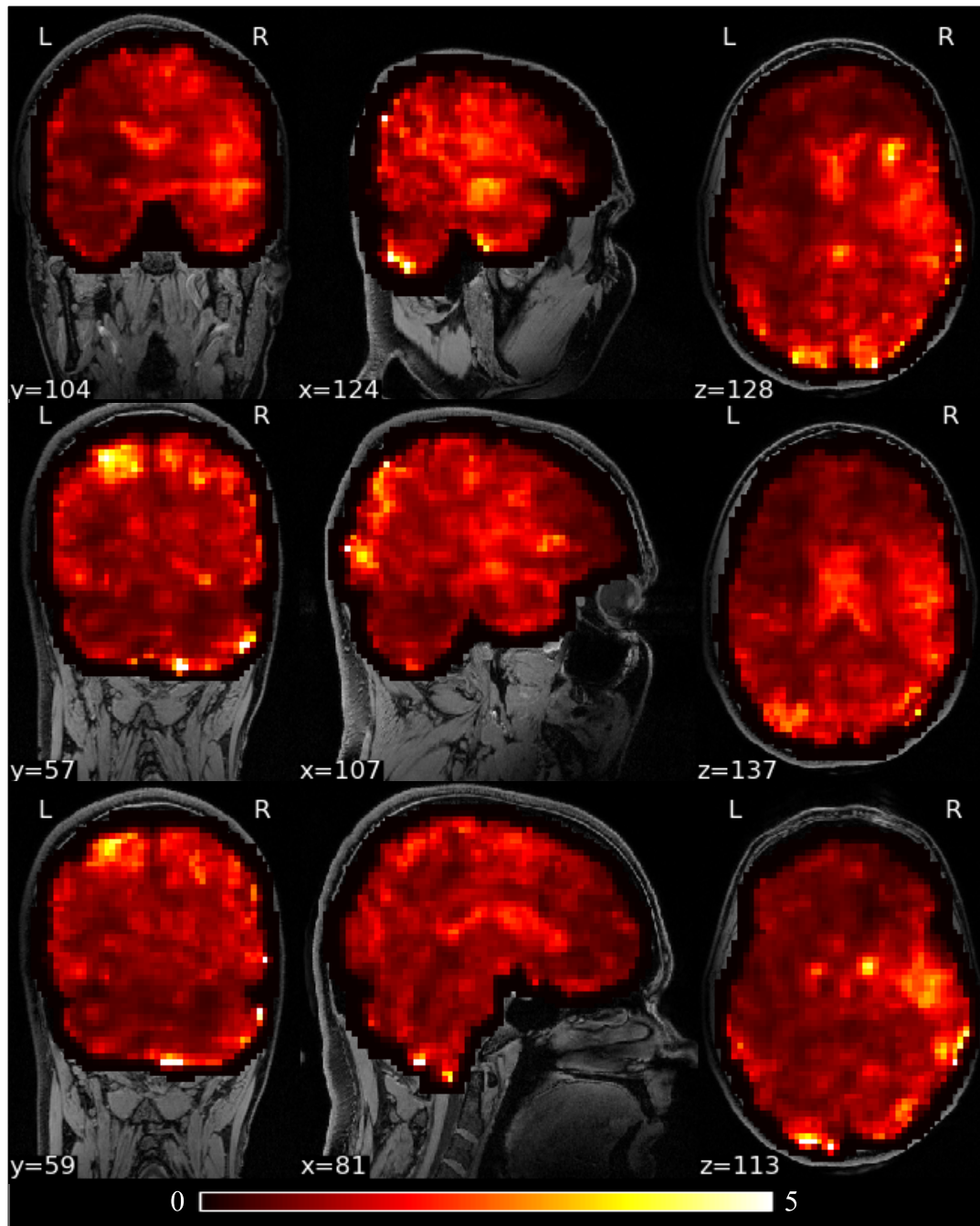
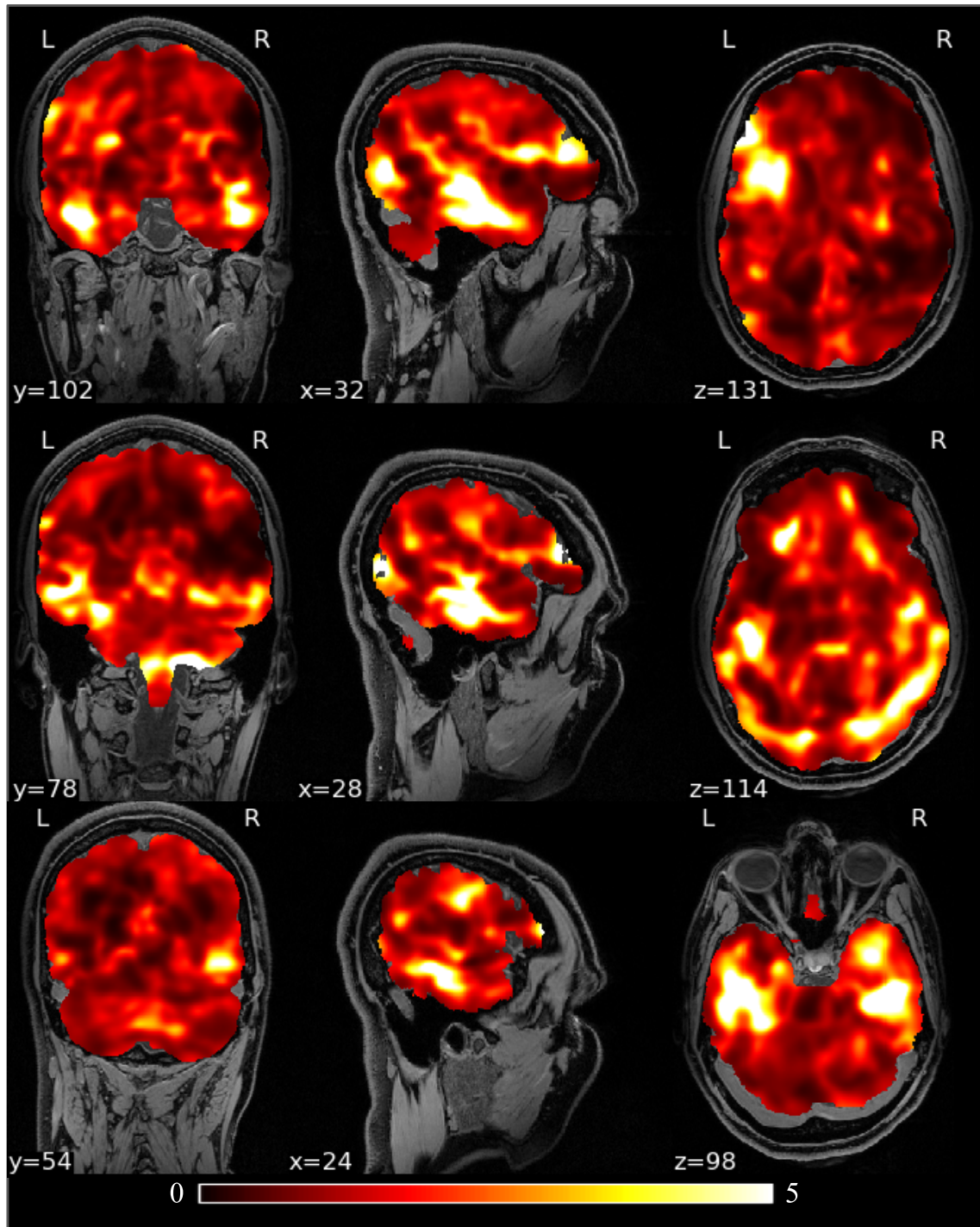


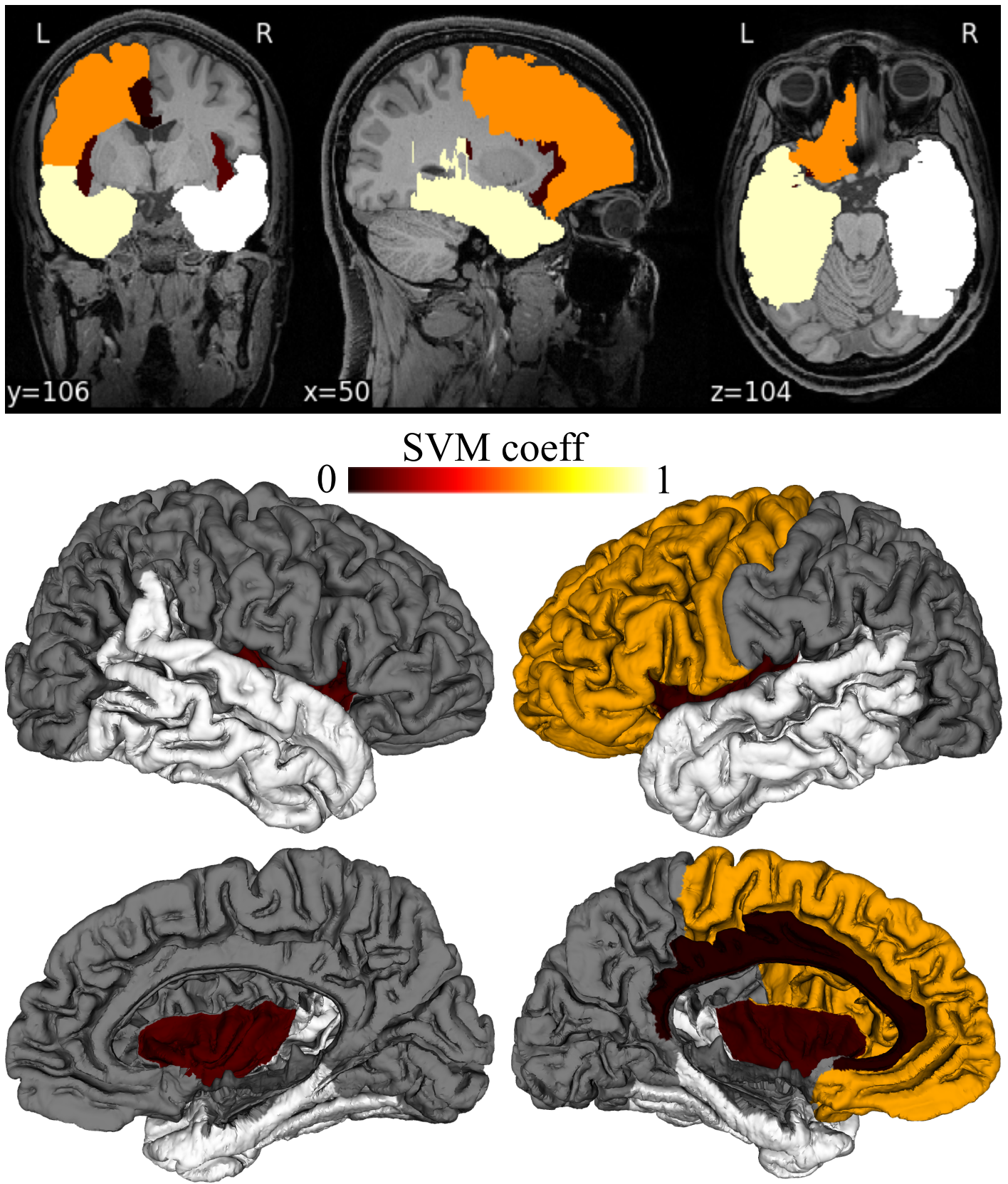
## Supplemental Material



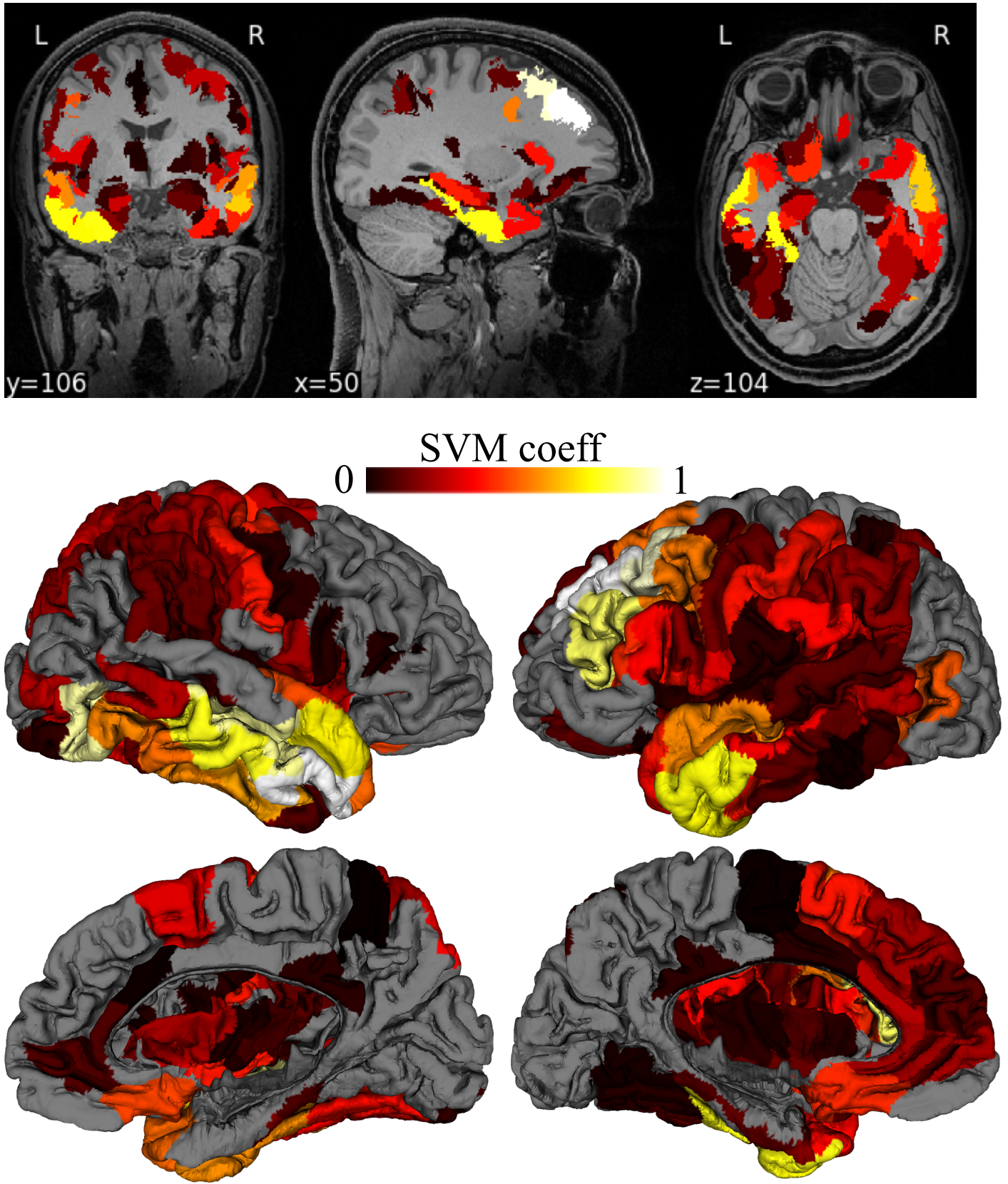
**FIGURE S1** Voxel-based PTE vs. non-PTE group comparison of lesion maps overlaid on the USCBrain atlas. The color code depicts f-values, shown in a region where  $p\text{-value} < 0.05$ , resulting from the F-test (with permutations). Prominent significant clusters are located in the left temporal lobe, bilateral occipital lobe, cerebellum, and right parietal lobe.



**FIGURE S2** Differences in ALFF between the PTE and non-PTE groups. The results are color-coded f-statistic thresholded by FDR corrected p-values ( $p < 0.05$ ) derived using a permutation test. Significant clusters are visible in the left temporal lobe, bilateral occipital lobes, cerebellum, and right parietal lobe. The higher F-values in lesion compared to ALFF comparisons show that lesion could be a stronger marker of PTE compared to functional changes at an early stage after TBI.



**FIGURE S3** The feature importance map is shown as color-coded ROIs overlaid on the USCBrain atlas. Both cortical surface and volumetric ROIs are shown.



**FIGURE S4** The feature importance map is shown as color-coded ROIs overlaid on the Brainnetome atlas. Both cortical surface and volumetric ROIs are shown.