

Cell Reports, Volume 43

Supplemental information

**PD-L1 restrains PD-1⁺Nrp1^{lo} Treg cells
to suppress inflammation-driven
colorectal tumorigenesis**

Dakota B. Poschel, John D. Klement, Alyssa D. Merting, Chunwan Lu, Yang Zhao, Dafeng Yang, Wei Xiao, Huabin Zhu, Ponnala Rajeshwari, Michael Toscano, Kimya Jones, Amanda Barrett, Roni J. Bollag, Padraic G. Fallon, Huidong Shi, and Kebin Liu

Supplemental Data

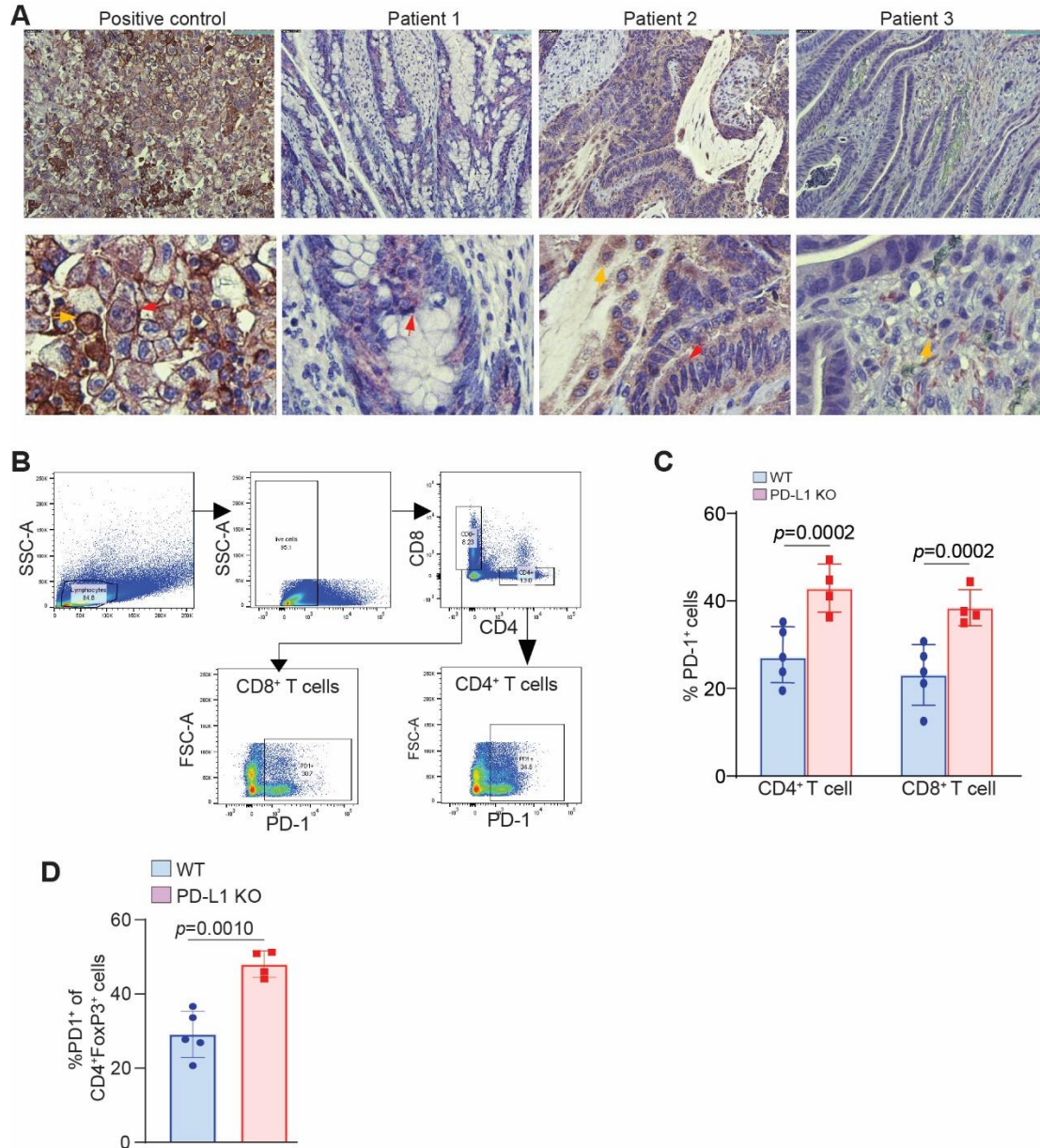


Figure S1. Loss of host PD-L1 results in PD-1⁺ T cell expansion in colorectal tumor-bearing mice. Related to Figure 2. A. Immunohistochemical staining of human colon tumor tissues from three patients. Human adrenal tumor tissues were stained as PD-L1 positive control. Shown are low magnification (top, scale bar=100 μ M) and zoomed (bottom) images. The images in the bottom panel are zoomed images of part of the respective images of in the top panel. The yellow arrow indicates leukocytes, and the red arrow indicates tumor cells. **B.** Spleen cells of WT and

Figure S2. Major cell clustering of AOM-DSS-induced colorectal cancer. Related to Figure 3. A. Heatmap of the cell cluster signature genes. **B.** Violin plots of the indicated genes in each cell cluster.

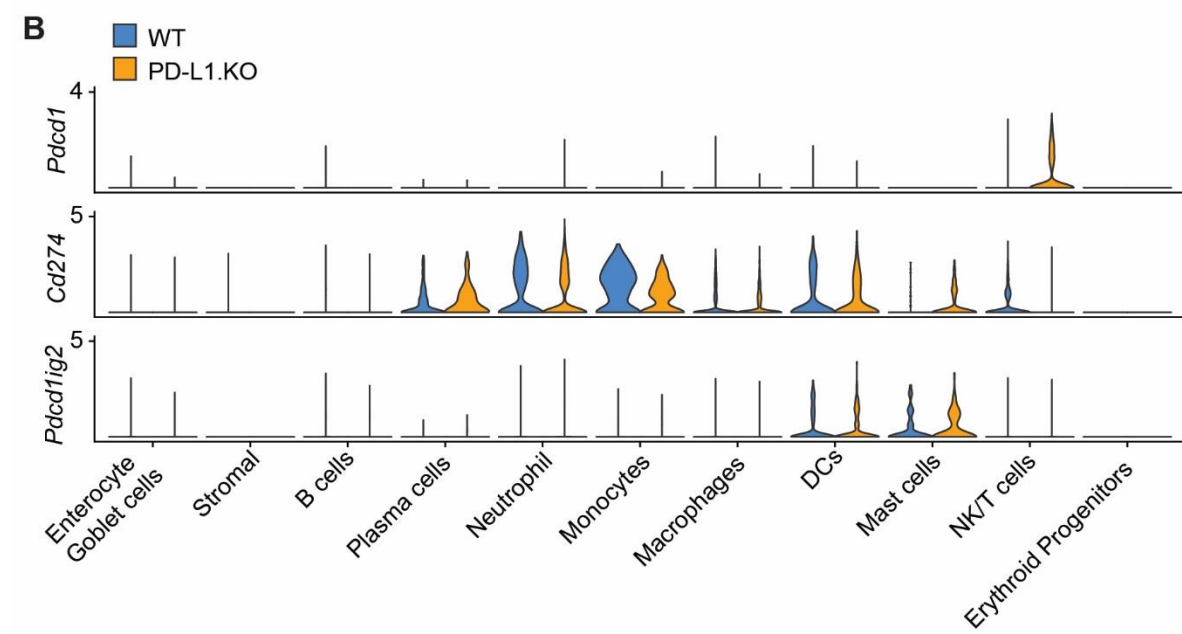
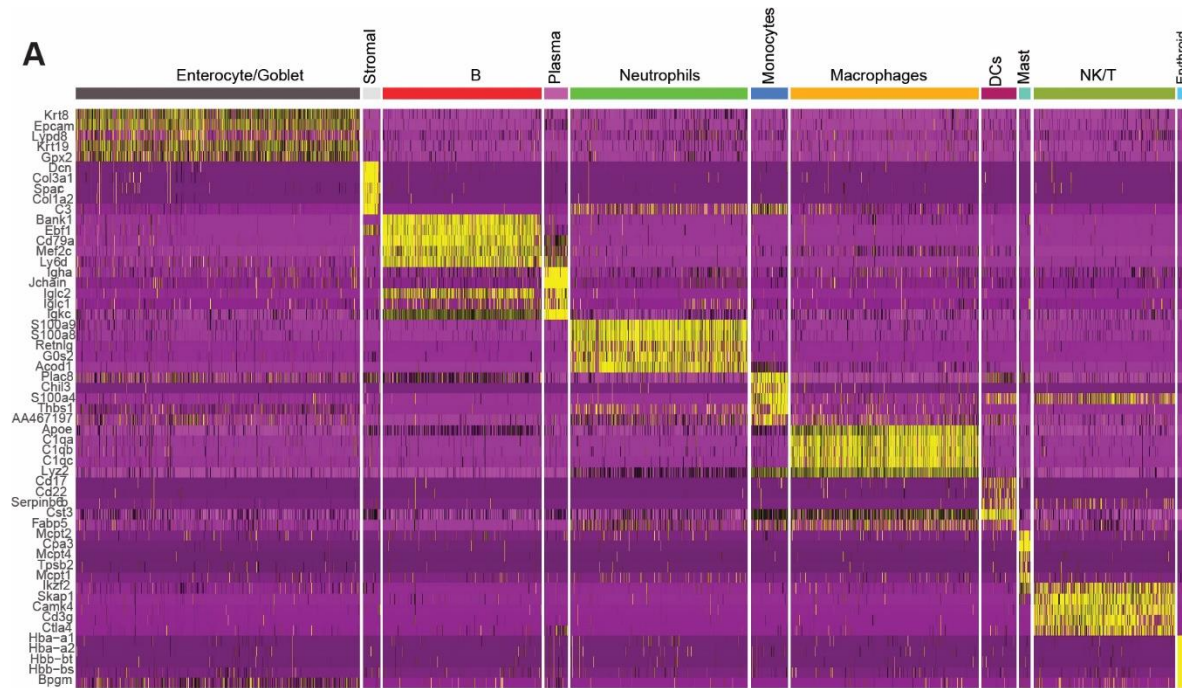


Figure S3. Immune cell clustering of AOM-DSS-induced colorectal tumor. Related to Figure 3. A. Immune cell clustering of AOM-DSS-induced colorectal tumor. **B.** Violin plots of the indicated genes in each cell cluster.

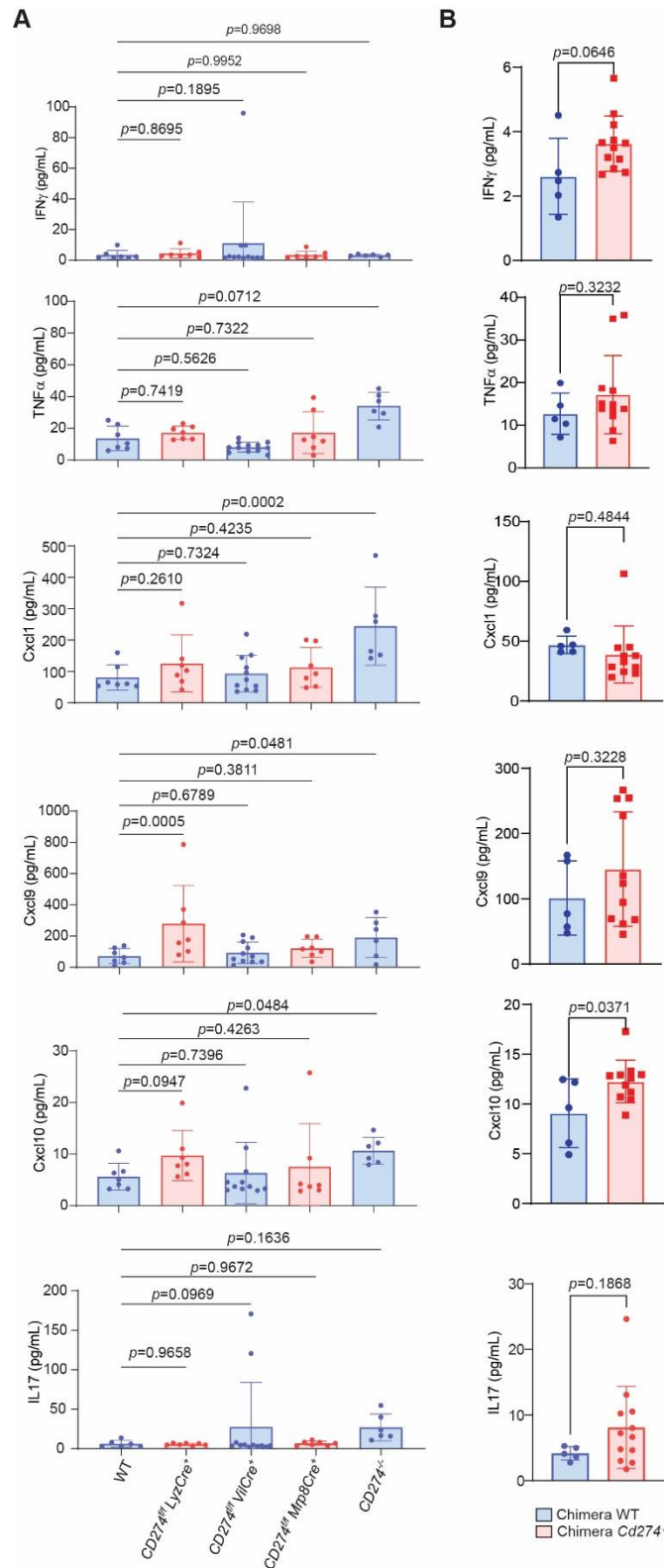


Figure S4. Cytokine profiles in WT and PD-L1 KO tumor-bearing mice. Related to Figure 5. Serum was collected from WT and PD-L1 KO tumor-bearing mice and analyzed for the indicated cytokines in WT and PD-L1 KO mice (A), and WT and PD-L1 KO chimera mice (B).

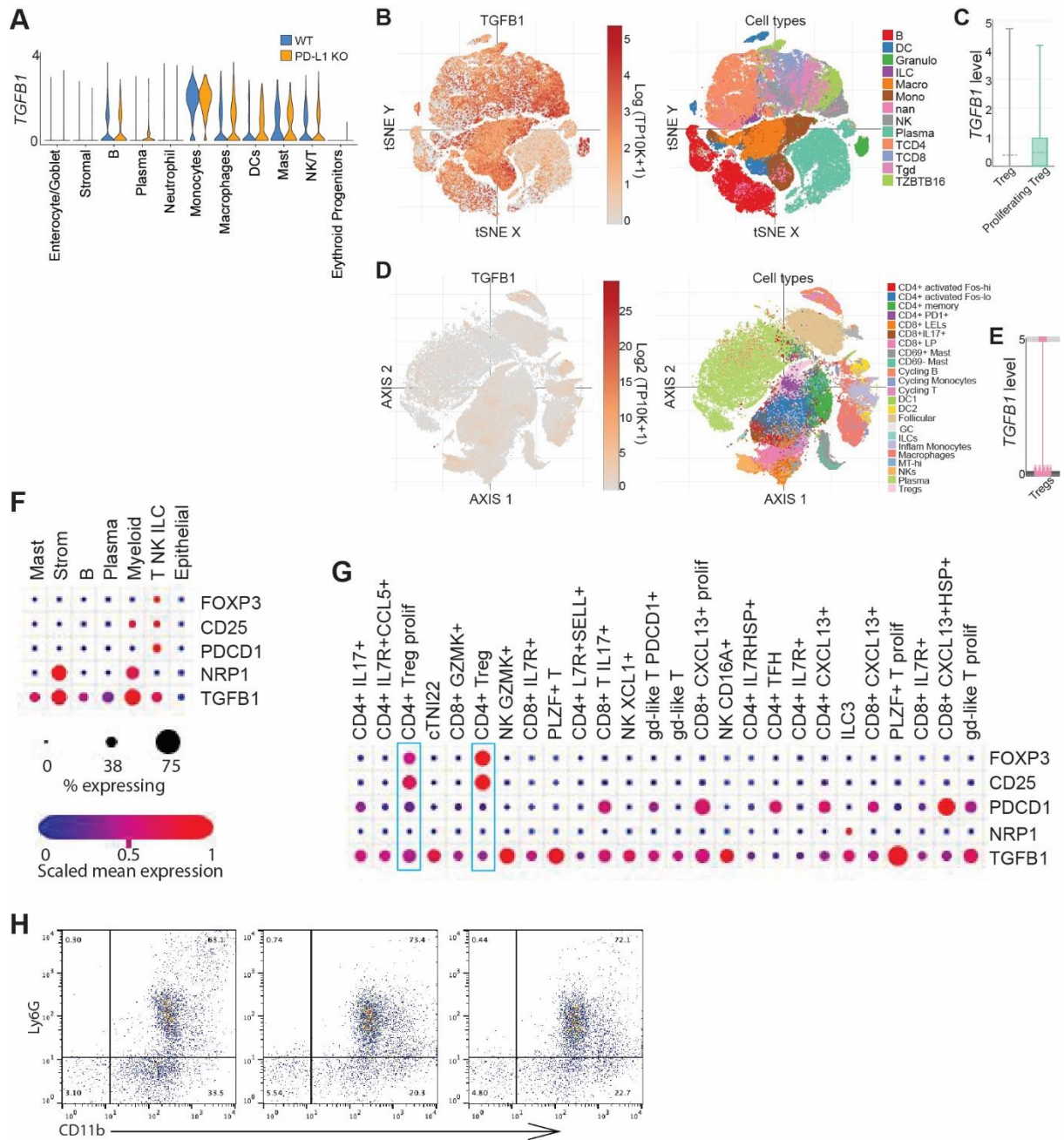


Figure S5. Human Treg cells express TGFβ. Related to Figure 4. **A.** Violin plot of *Tgfβ1* transcripts in the indicated cell populations in colorectal tumor from WT and PD-L1 KO mice. **B.** UMAP plots of *TGFβ1* transcripts (left panel) and immune cells (right) of human colon tumor. Human colorectal cancer dataset were retrieved from the single cell portal (GEO:GSE178341). **C.** Box plot of *TGFβ1* transcript level in the indicated cell subpopulation. **D.** UMAP projection of *TGFβ1* (left) and immune cell subpopulation (right) of human colon tumor. **E.** Box plot of *TGFβ1* transcript level in Treg cells. **F&G** Human colon tumor scRNA-seq datasets (GEO accession: GSE178341) were analyzed for expression of the indicated genes in major cell types (F) and T cell subpopulations (G). The correlations are shown in dot plots. **H.** Neutrophils were isolated from tumor tissues of tumor-bearing mice. Shown is purity of neutrophils from three tumor-bearing mice.