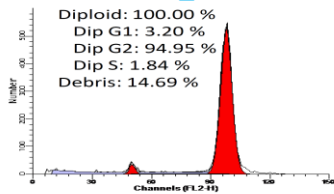
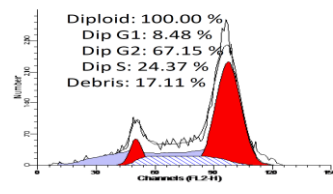
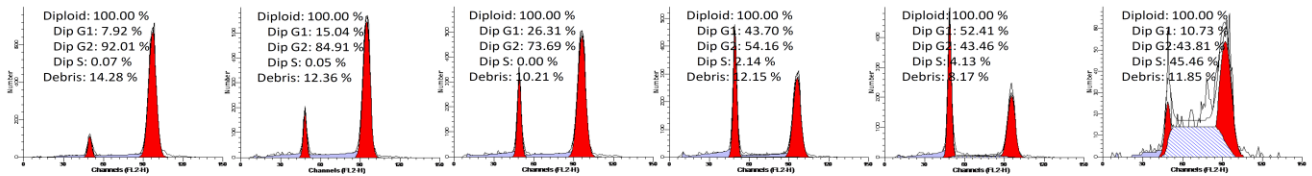
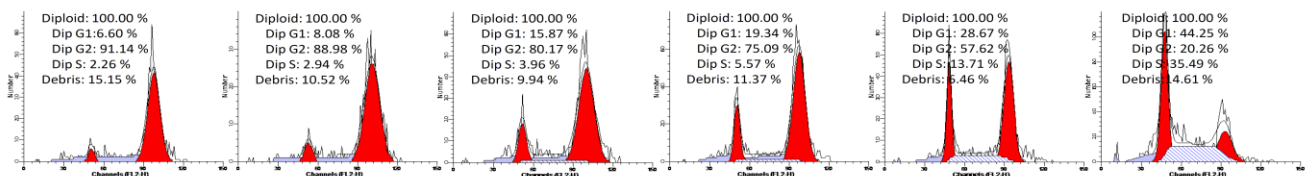
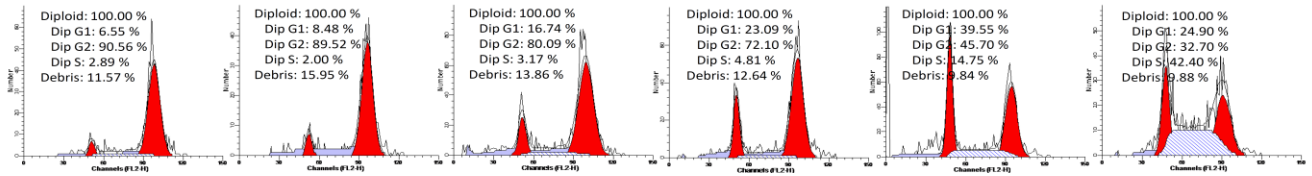
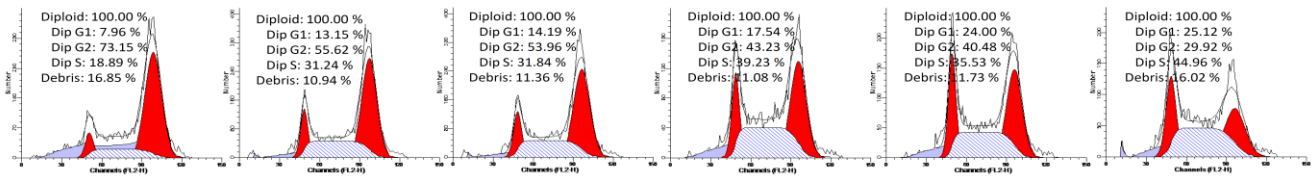
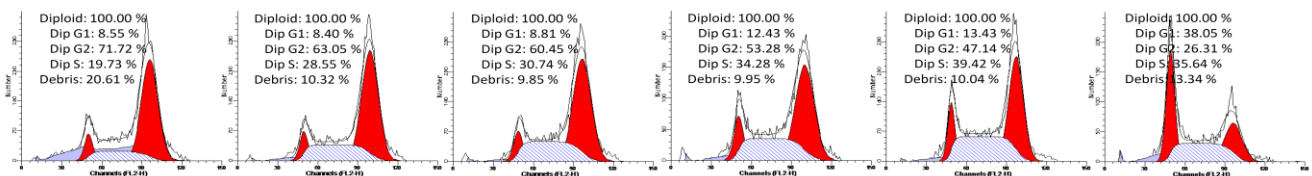
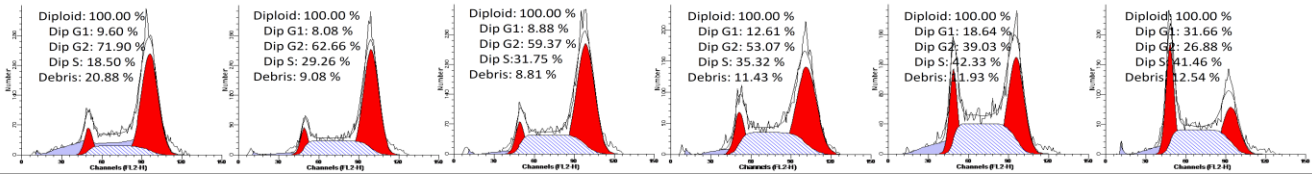


A**MA-1****Nocodazole_24H****OCI-Ly3****Nocodazole_24H****B****Serum free 2H_control****0.5H_control****1H_control****3H_control****6H_control****24H_control****MA-1****HP infect 2H_Serum free****HP_0.5H****HP_1H****HP_3H****HP_6H****HP_24H****HP+CsA 2H_Serum free****HP+CsA_0.5H****HP+CsA_1H****HP+CsA_3H****HP+CsA_6H****HP+CsA_24H****Serum free 2H_control****0.5H_control****1H_control****3H_control****6H_control****24H_control****OCI-Ly3****HP infect 2H_Serum free****HP_0.5H****HP_1H****HP_3H****HP_6H****HP_24H****HP+CsA 2H_Serum free****HP+CsA_0.5H****HP+CsA_1H****HP+CsA_3H****HP+CsA_6H****HP+CsA_24H**

Supplementary Fig. S3. (A) The MA-1 cells and OCI-Ly3 cells were synchronized with nocodazole, resulting in most cells being arrested at the G2 phase and serving as controls. (B) Flow cytometric analysis of cell cycle distribution in MA-1 cells (upper panel) and OCI-Ly3 cells (lower panel) co-cultured with or without the HP strain, and the HP strain and cyclosporine A (CsA).