

S1_raw-images

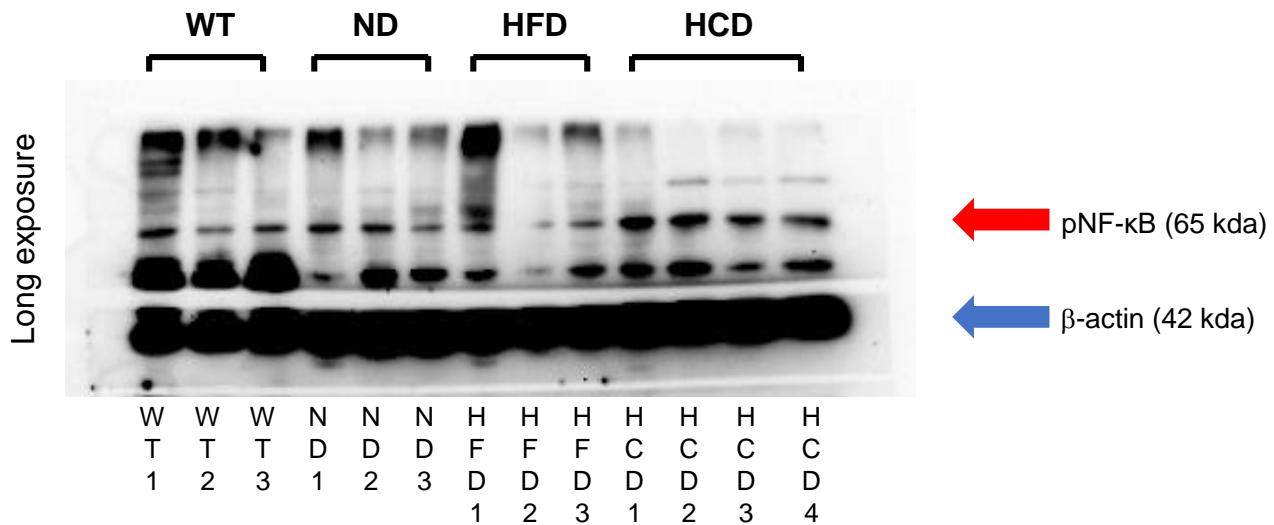
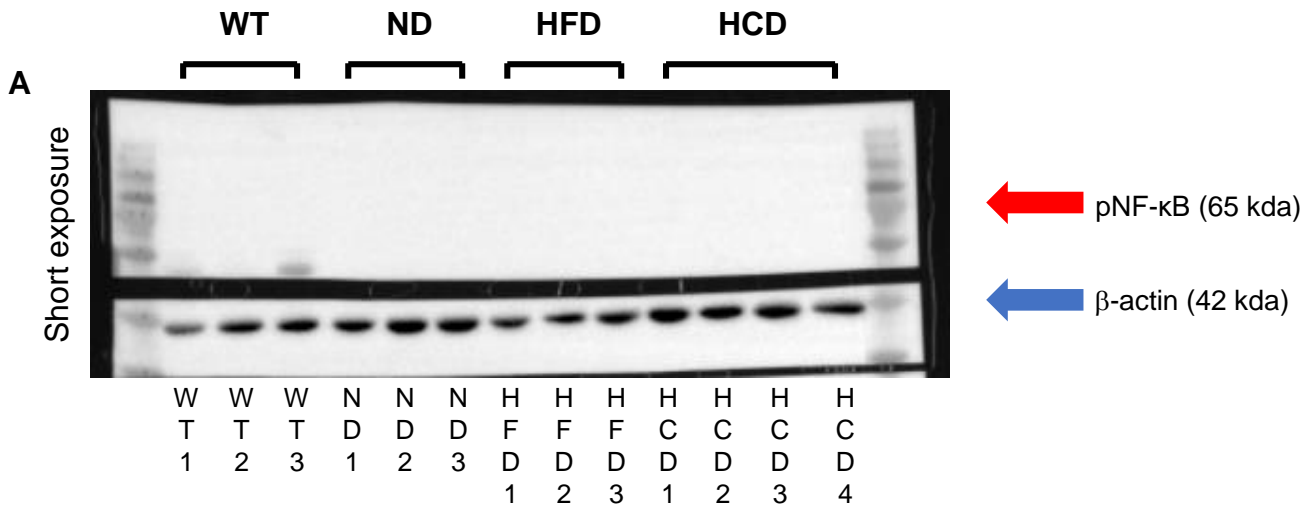
Development of a novel complex inflammatory bowel disease mouse model: reproducing human inflammatory bowel disease etiologies in mice

Sun-Min Seo¹, Na-Won Kim¹, Eun-Seon Yoo¹, Ji-Hun Lee¹, Ah-Reum Kang¹, Han-Bi Jeong¹, Won-Yong Shim¹, Dong-Hyun Kim¹, Young-Jun Park¹, Kieun Bae², Kyong-Ah Yoon², Yang-Kyu Choi^{1*}

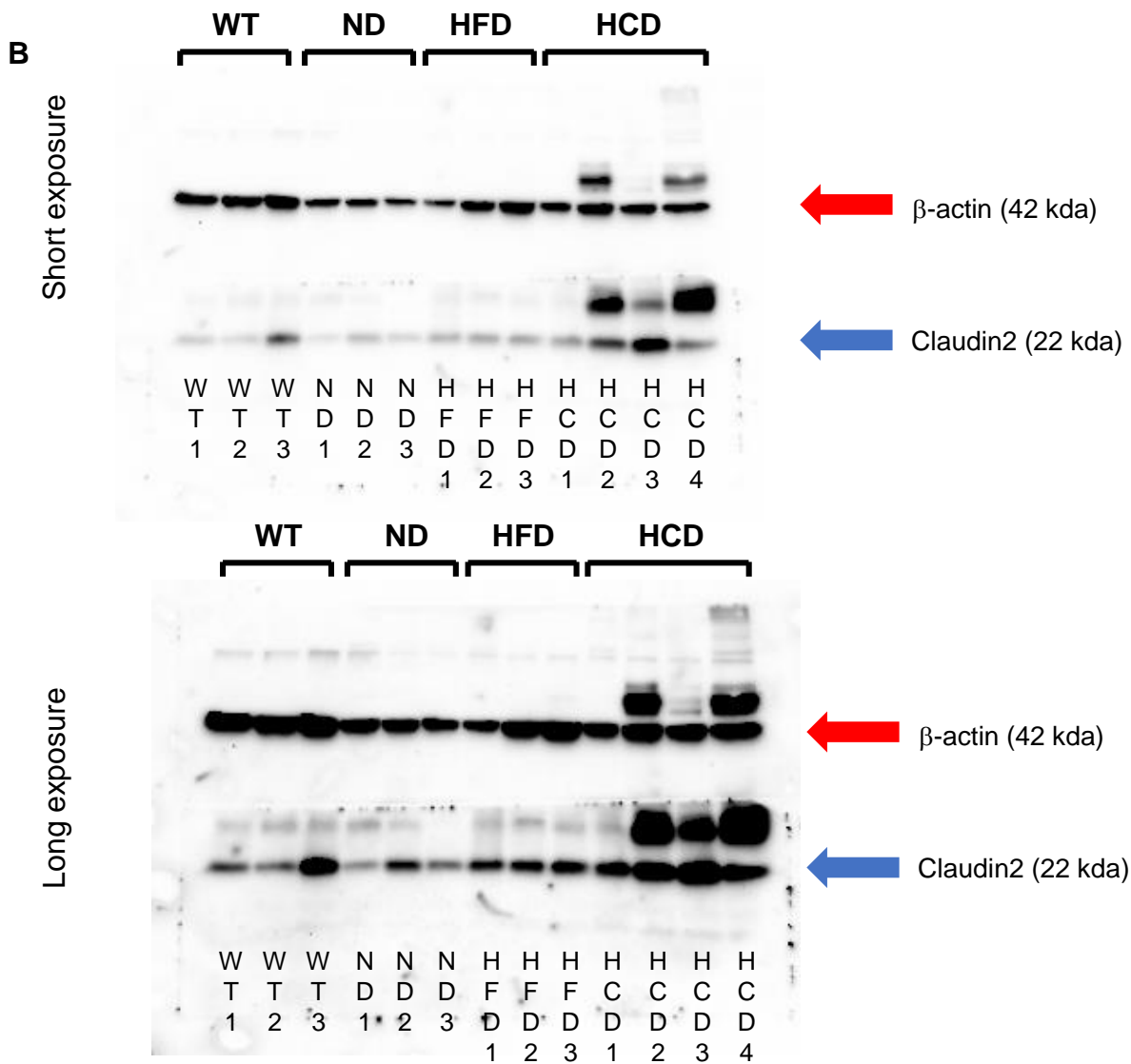
¹ Department of Laboratory Animal Medicine, College of Veterinary Medicine, Konkuk University, Seoul, Republic of Korea

² Department of Veterinary Biochemistry, College of Veterinary Medicine, Konkuk University, Seoul, Republic of Korea

*Corresponding author: yangkyc@konkuk.ac.kr (YKC)



Uncropped images of blot presented in Fig 6A



Uncropped images of blot presented in Fig 6B