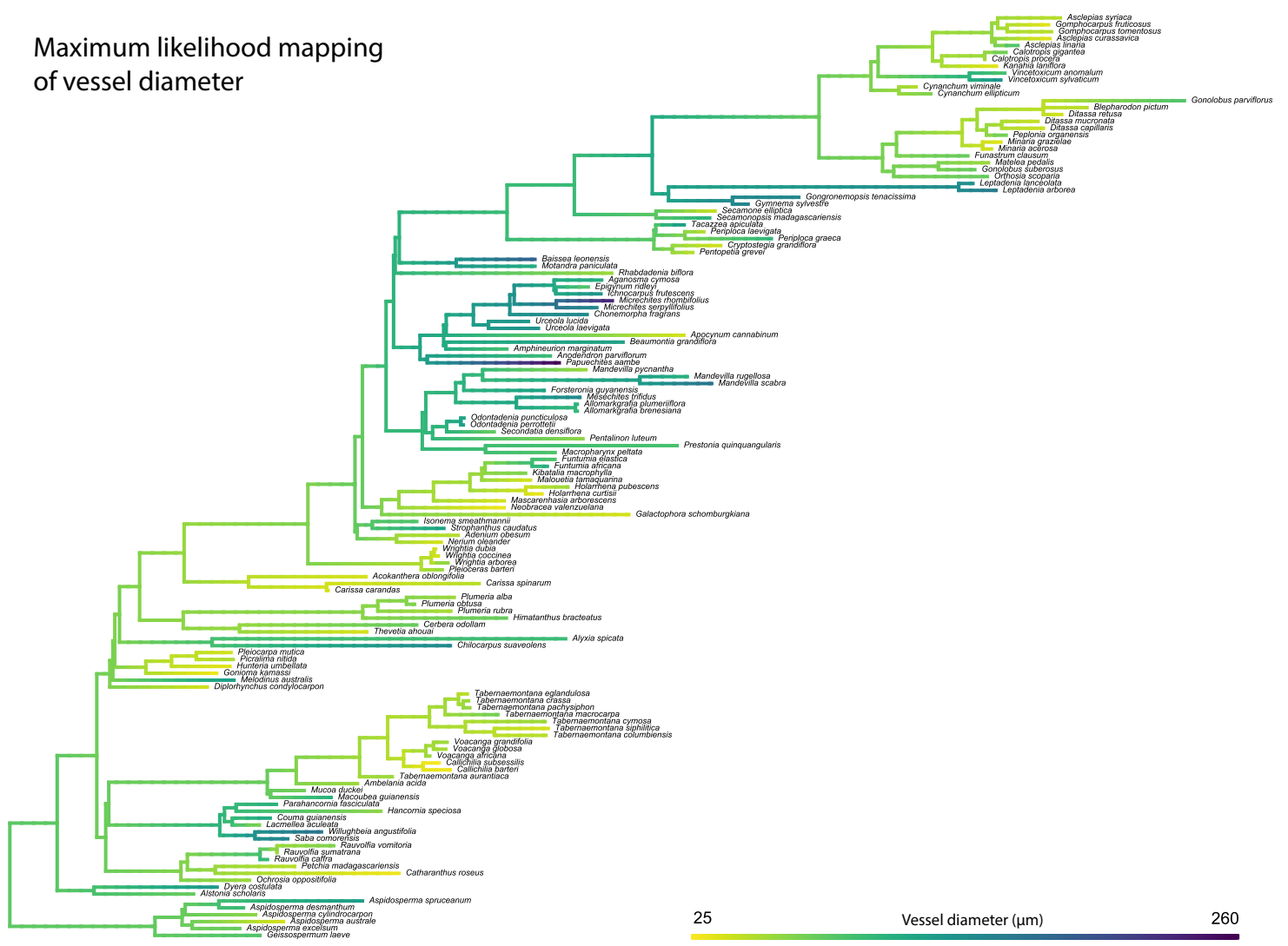


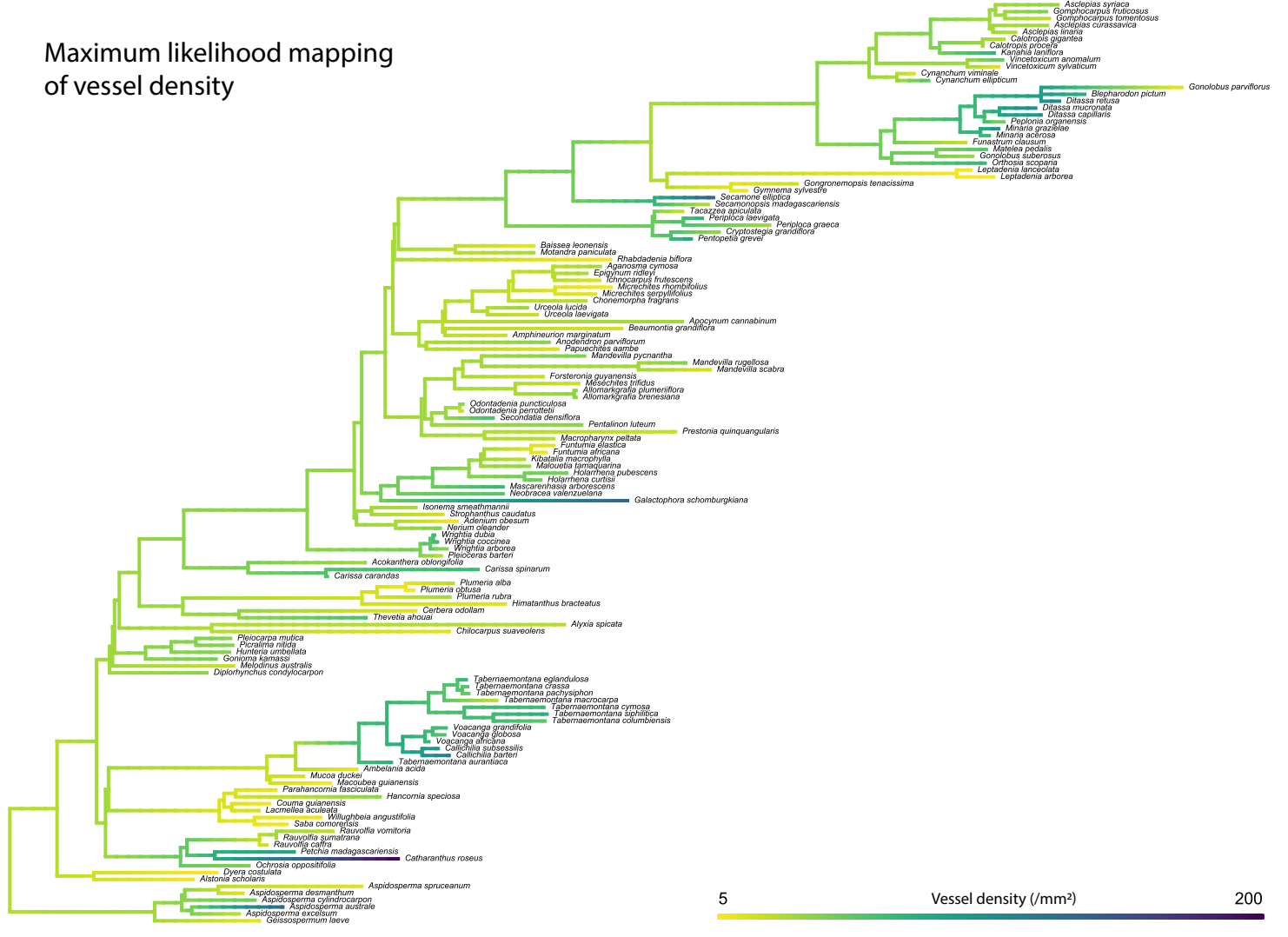
Beckers et al.—American Journal of Botany 2024—Appendix S5. visualization of ancestral state reconstructions with species names as tip labels and reconstructions not included in the main text.

Maximum likelihood mapping of vessel diameter



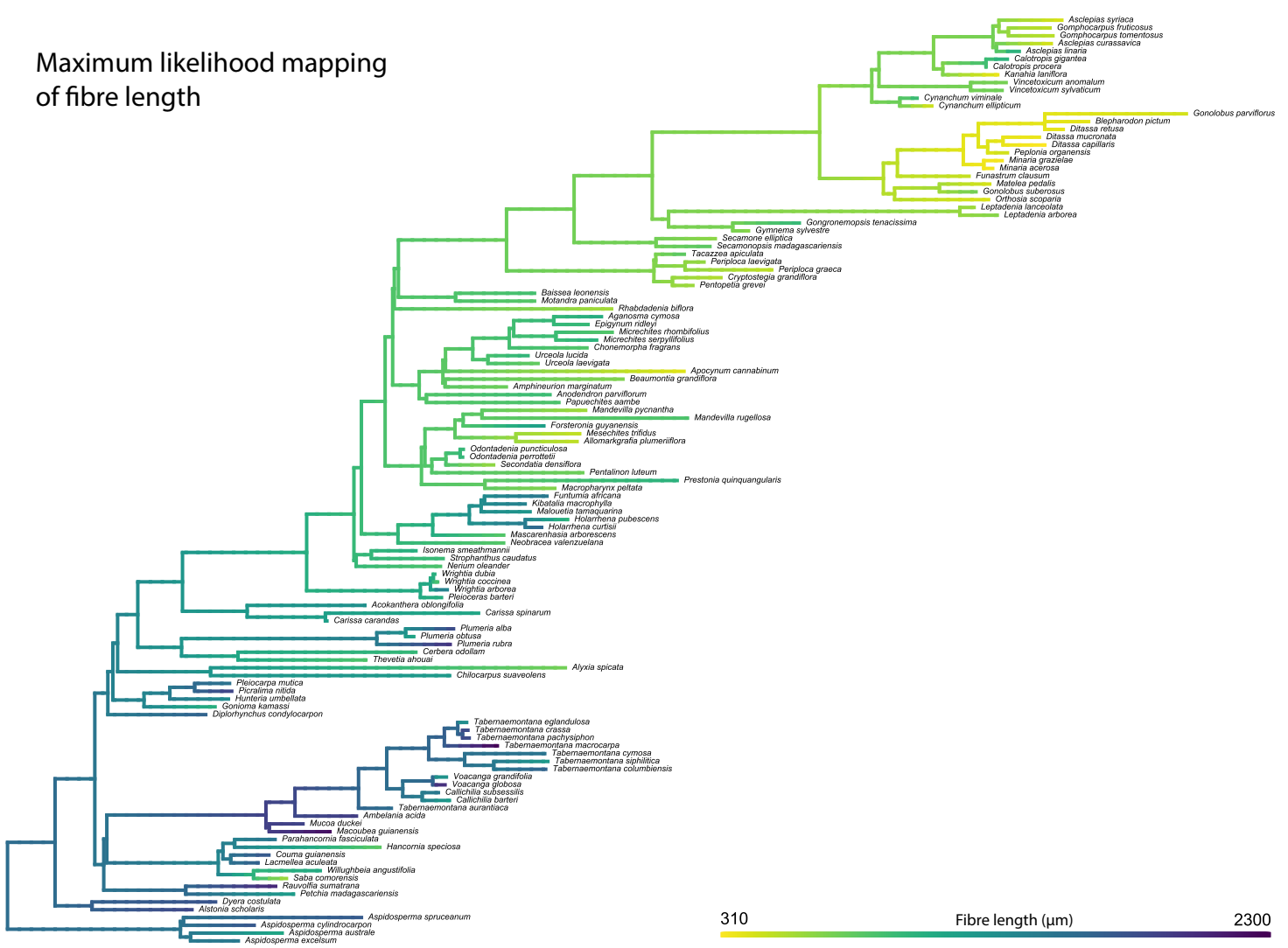
25 Vessel diameter (μm) 260

Maximum likelihood mapping of vessel density

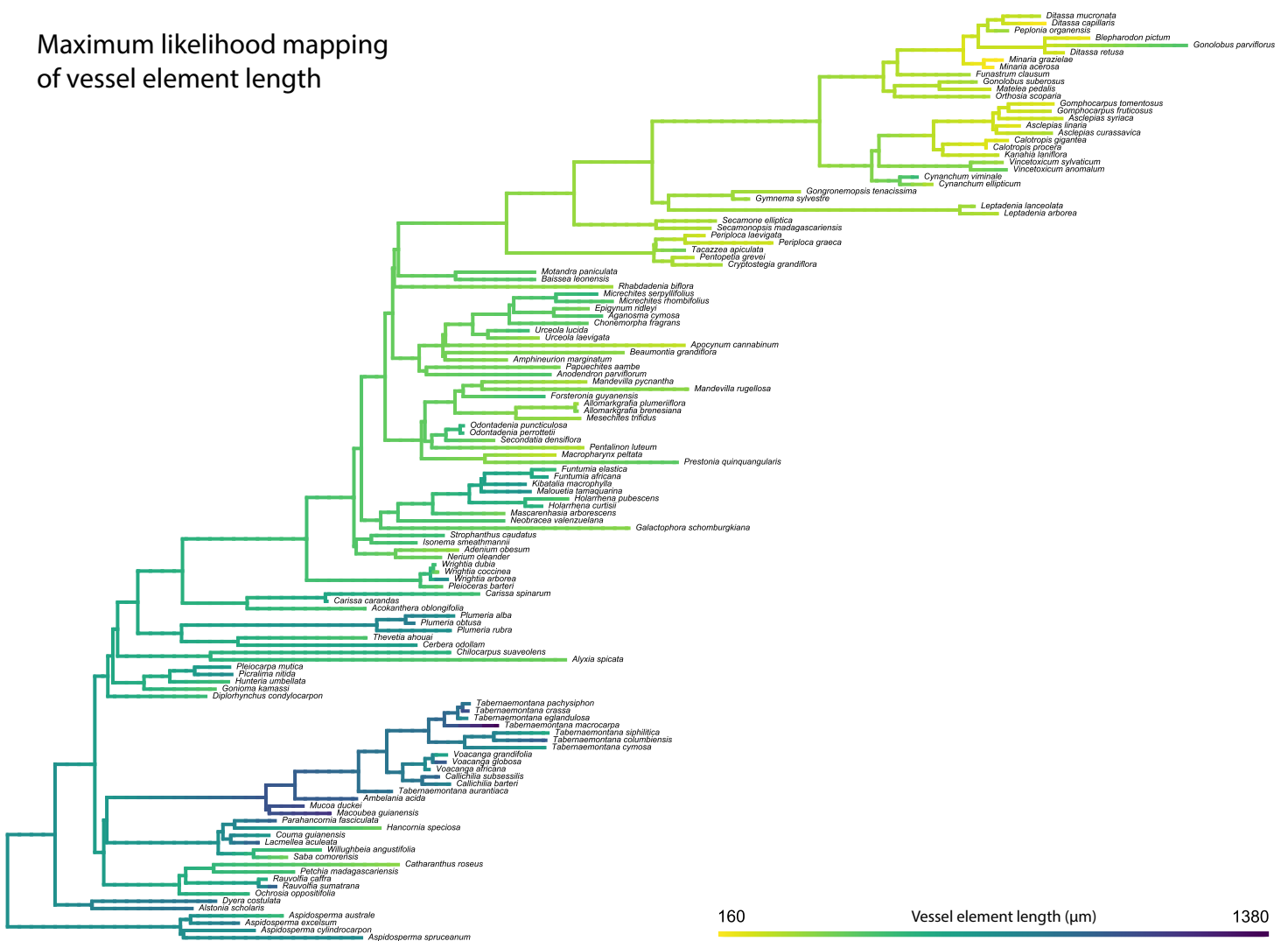


5 Vessel density (/mm²) 200

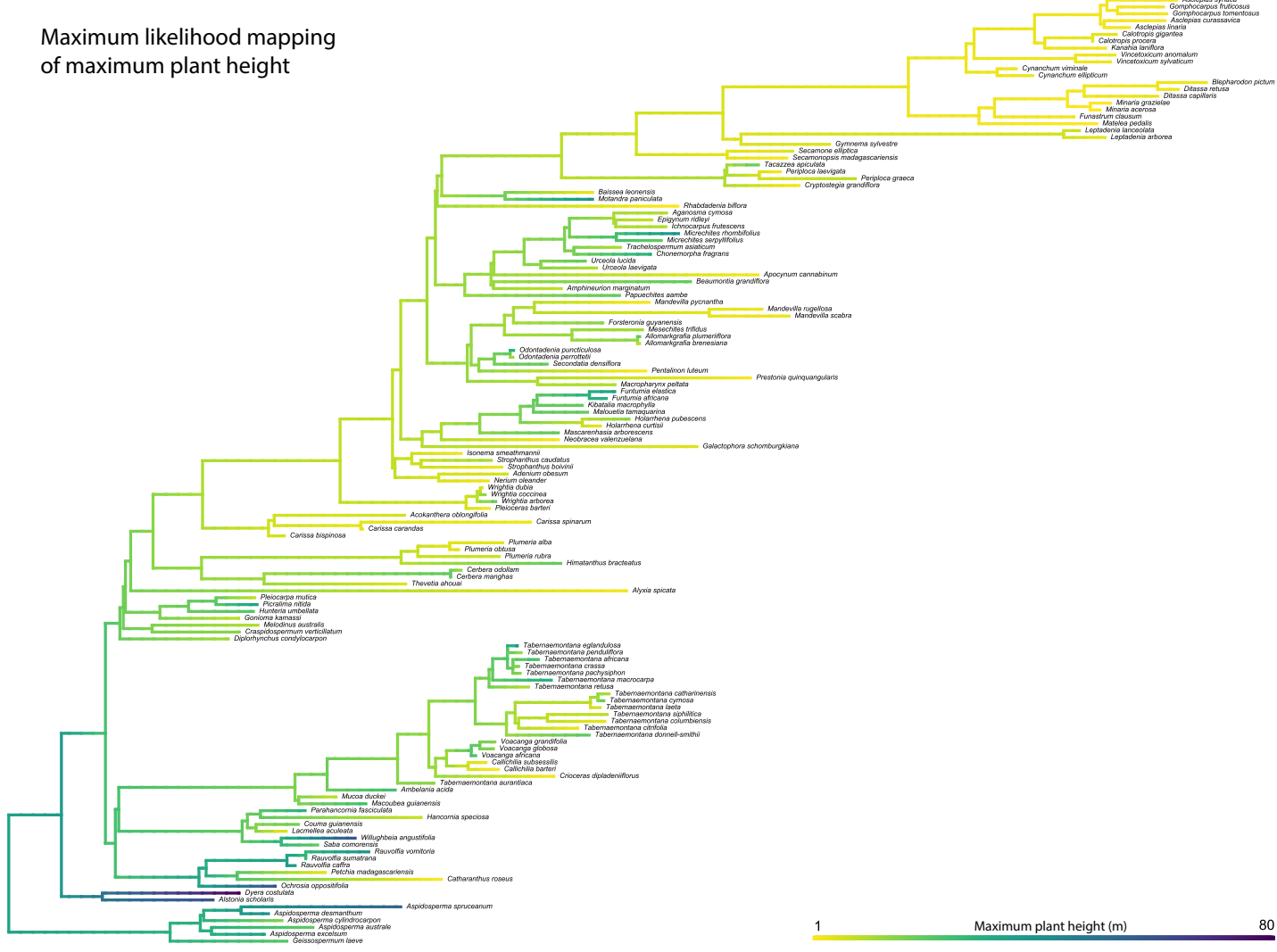
Maximum likelihood mapping of fibre length



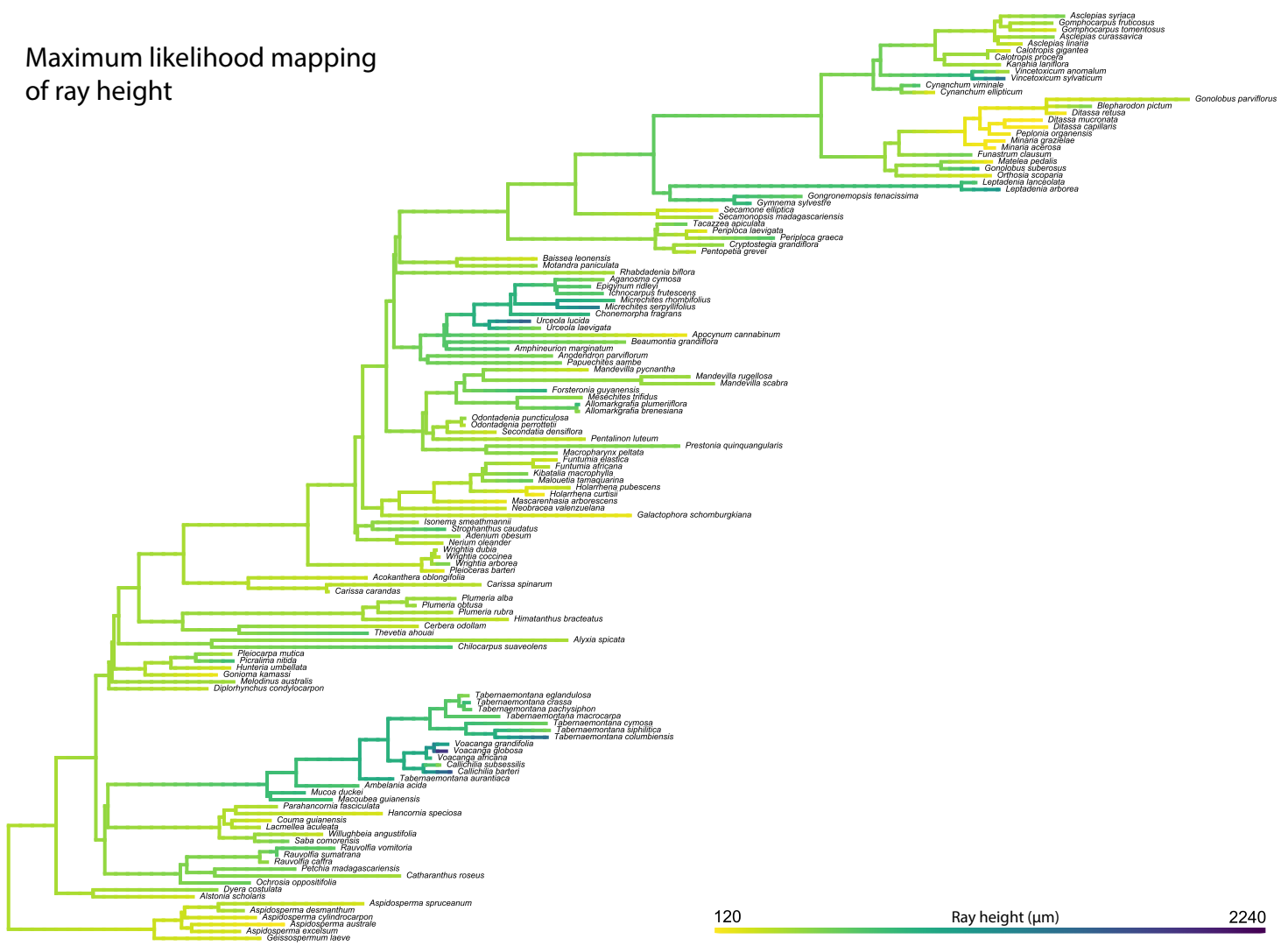
Maximum likelihood mapping of vessel element length



Maximum likelihood mapping of maximum plant height

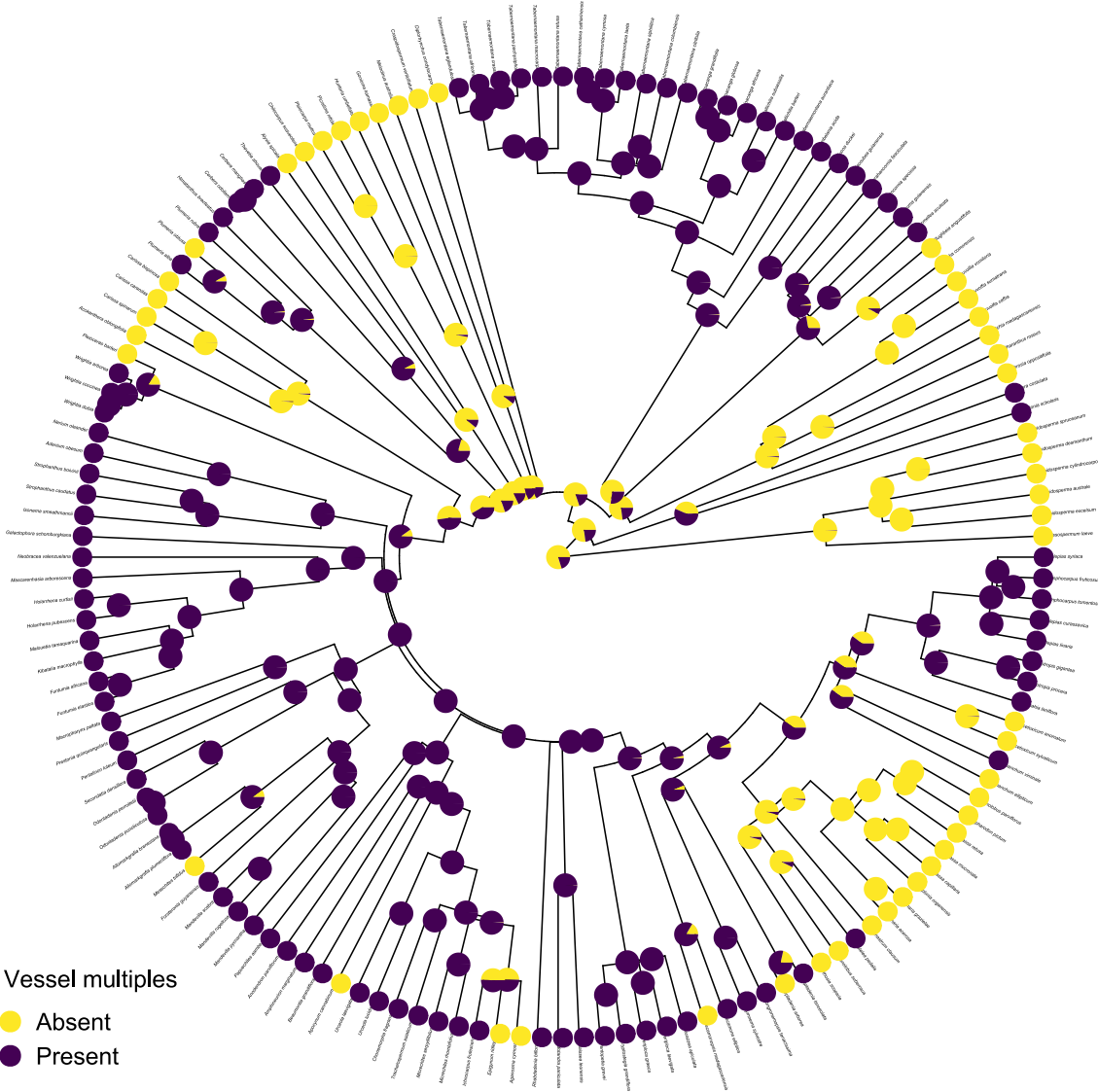
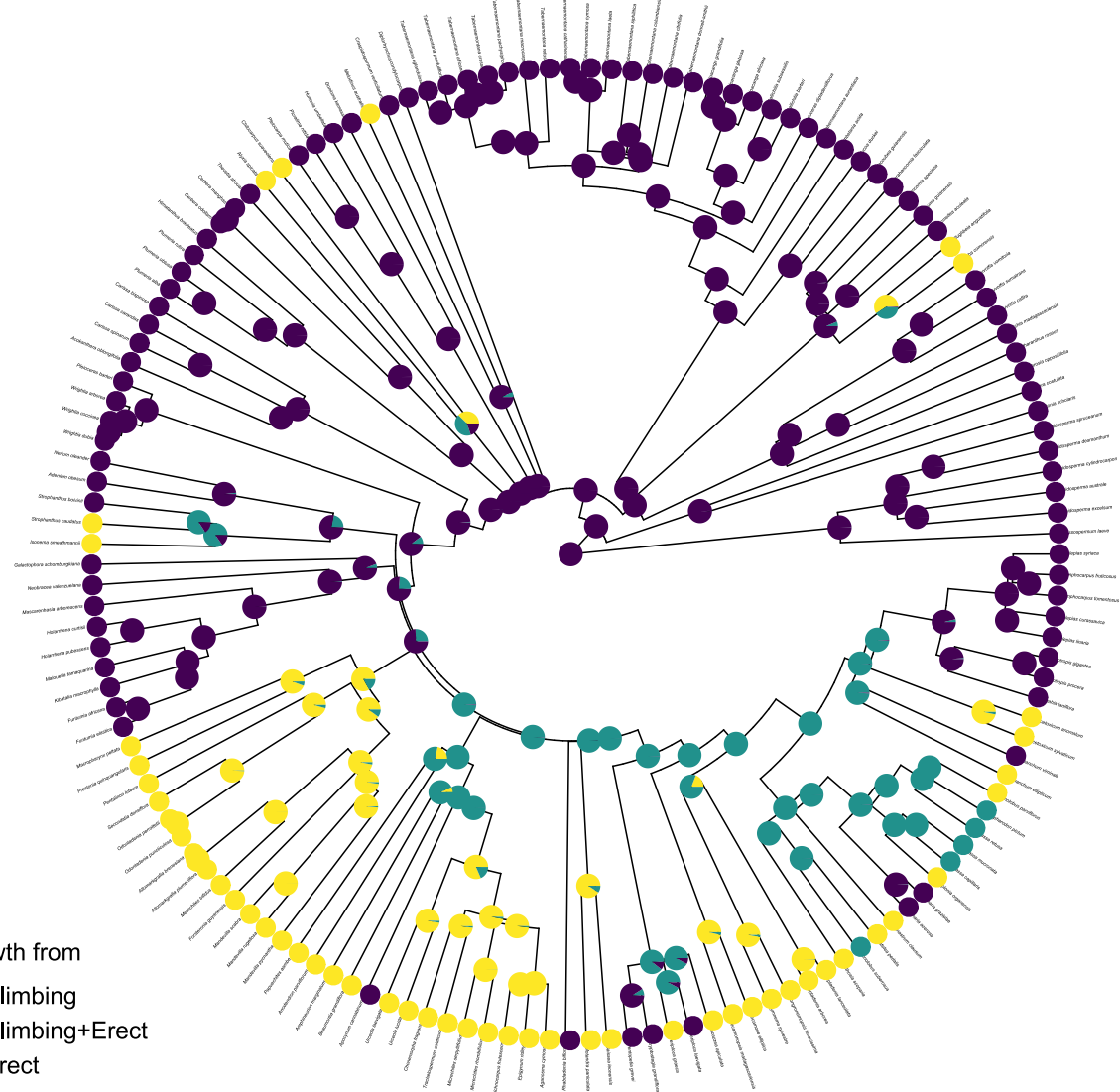


Maximum likelihood mapping of ray height



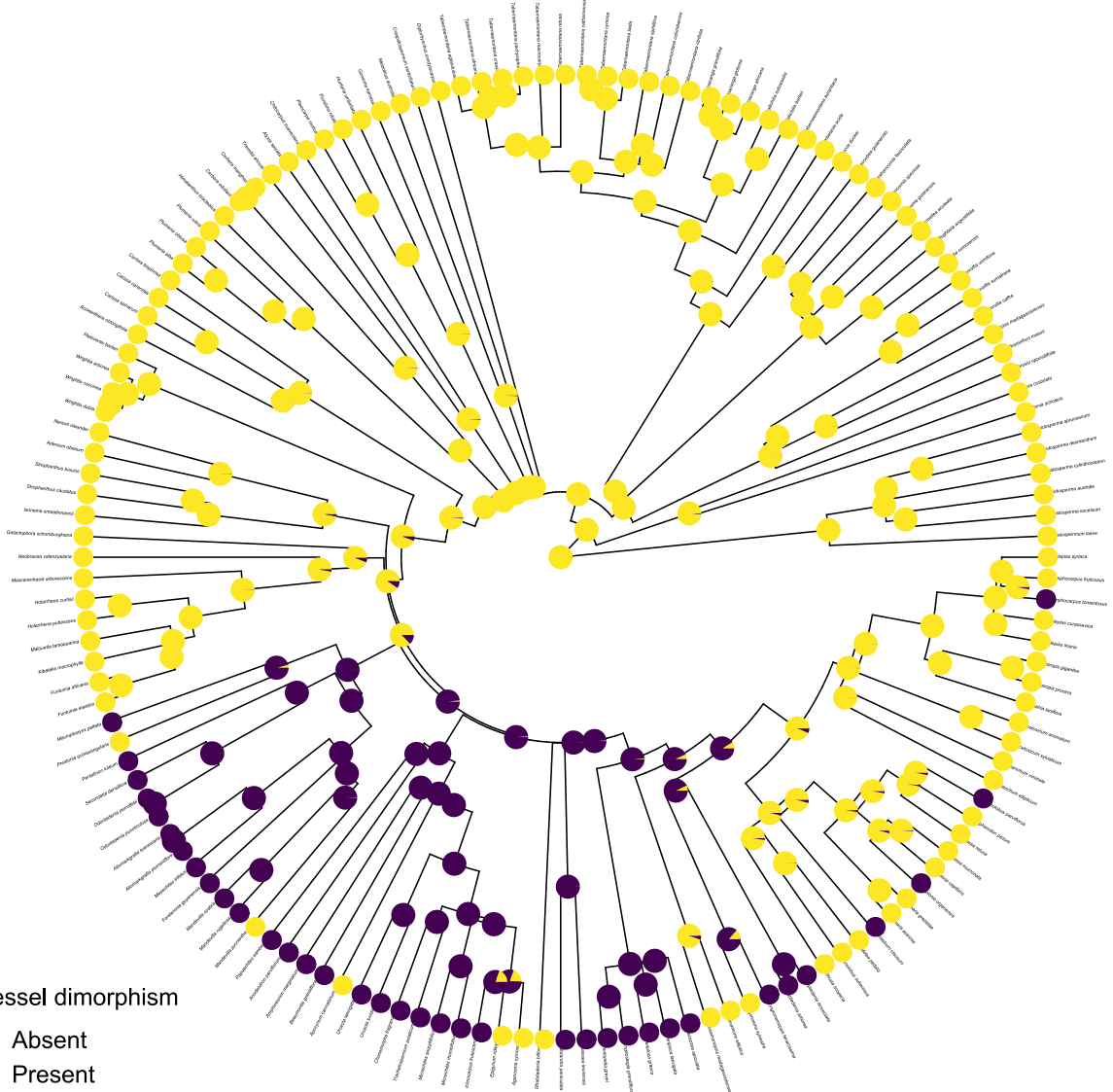
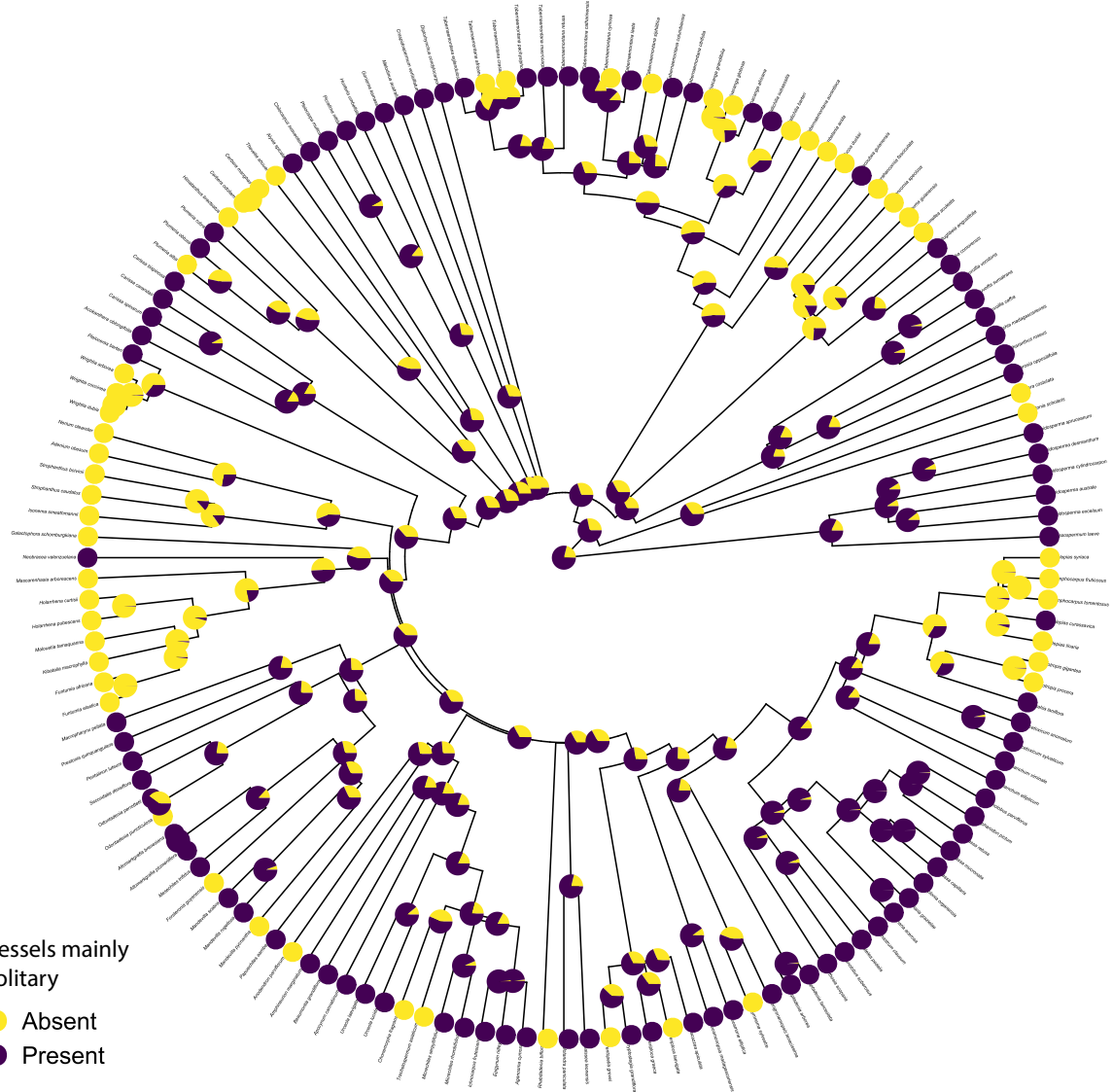
Growth from

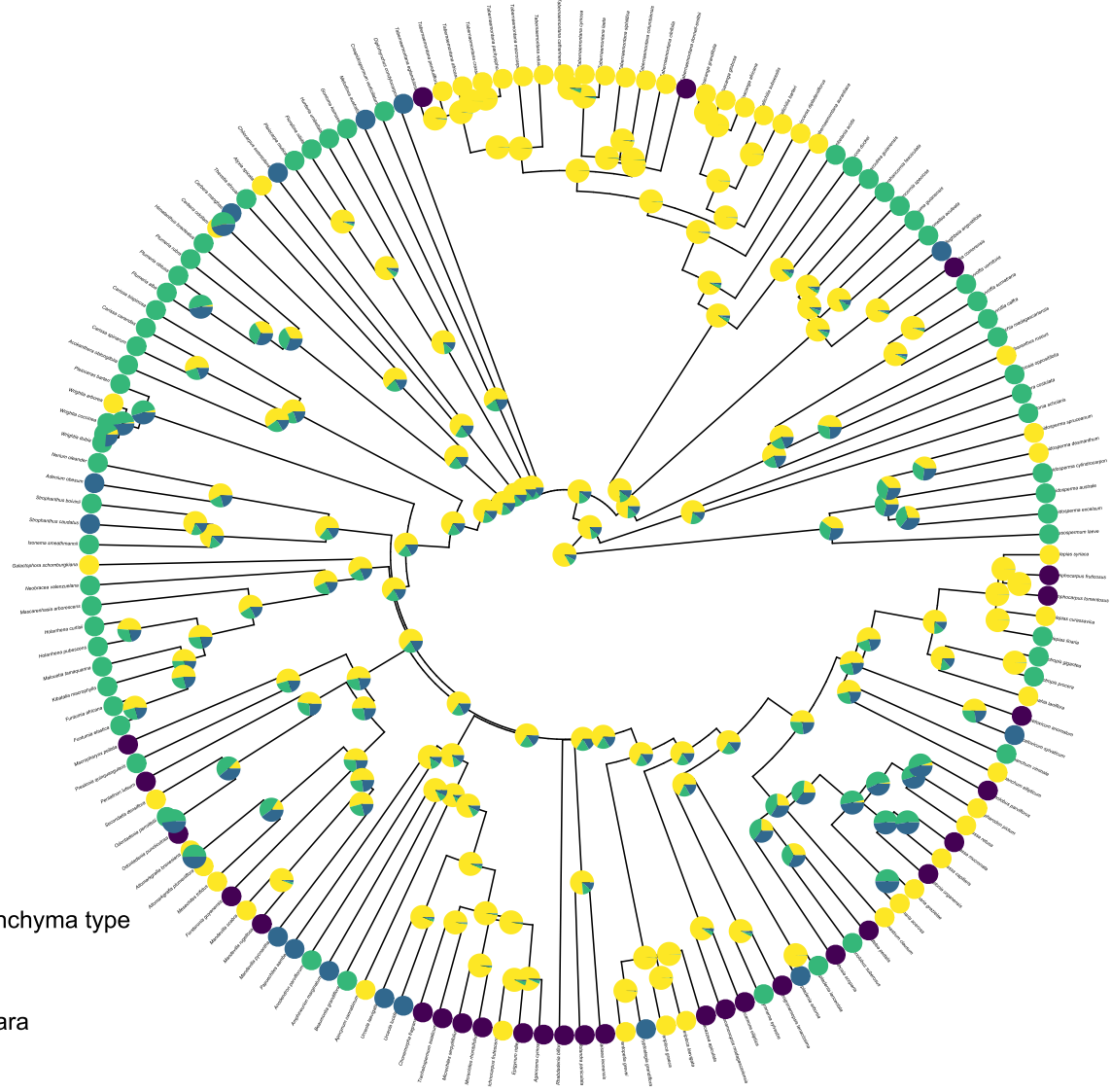
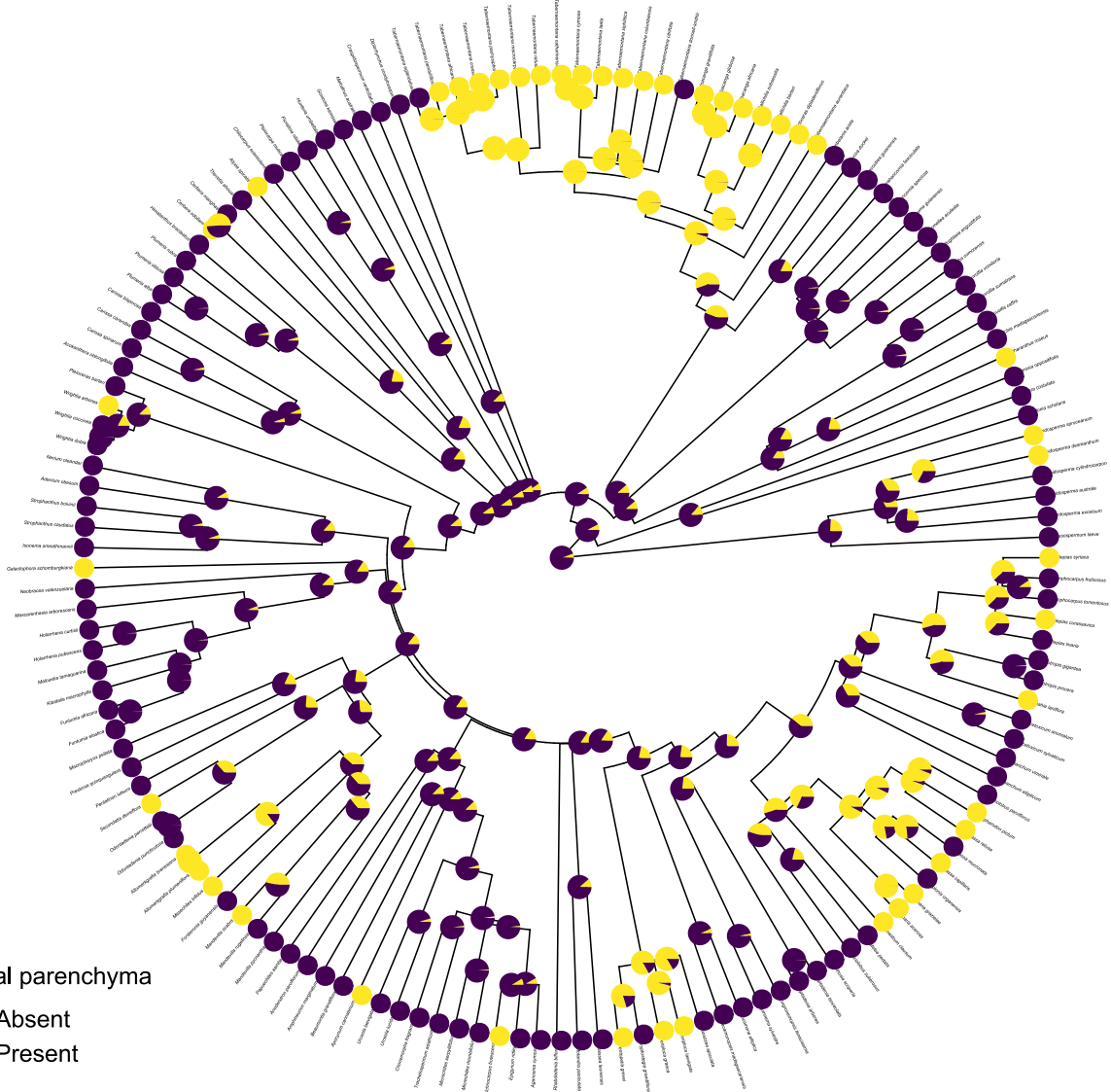
- Climbing
- Climbing+Erect
- Erect

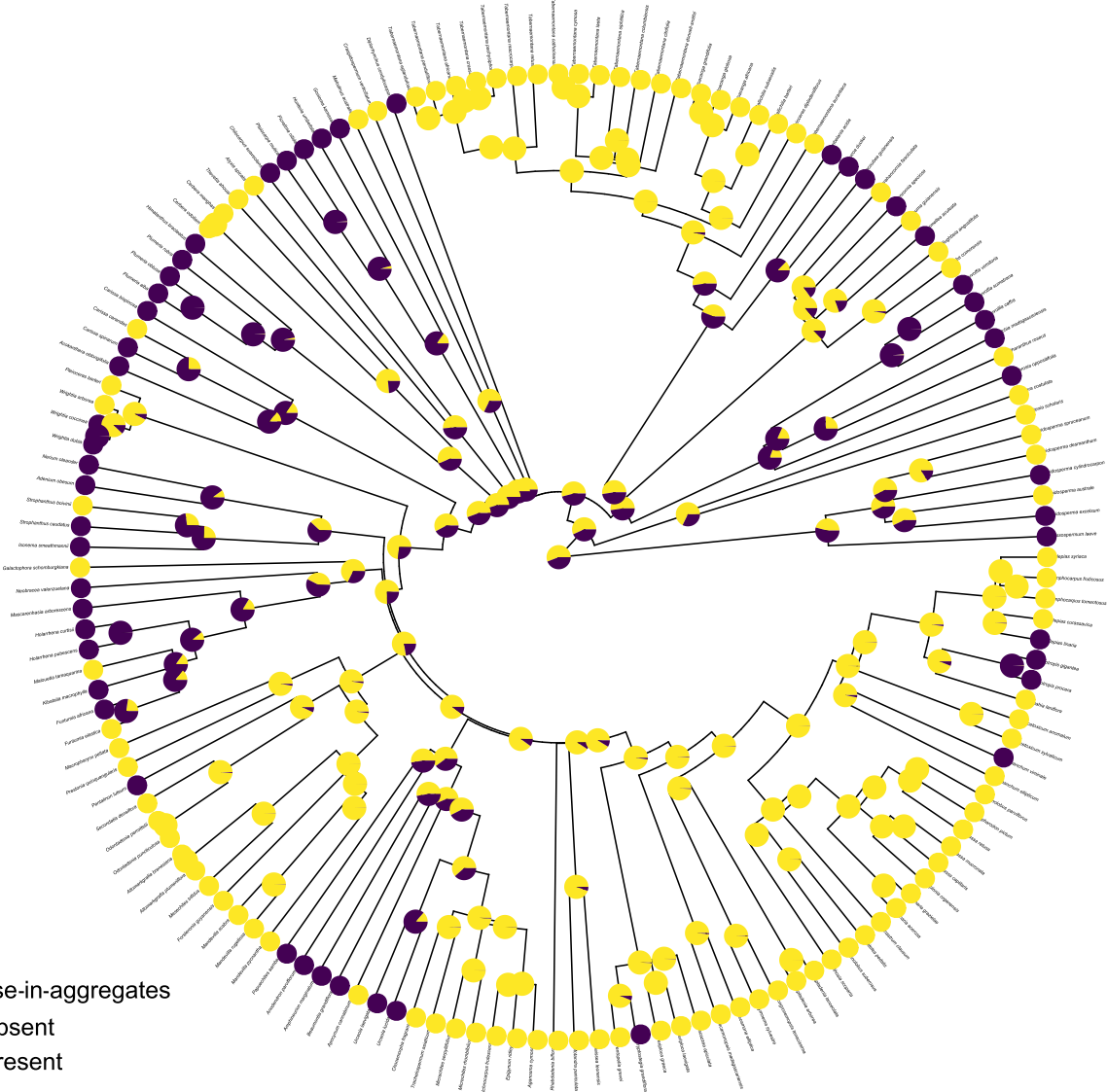
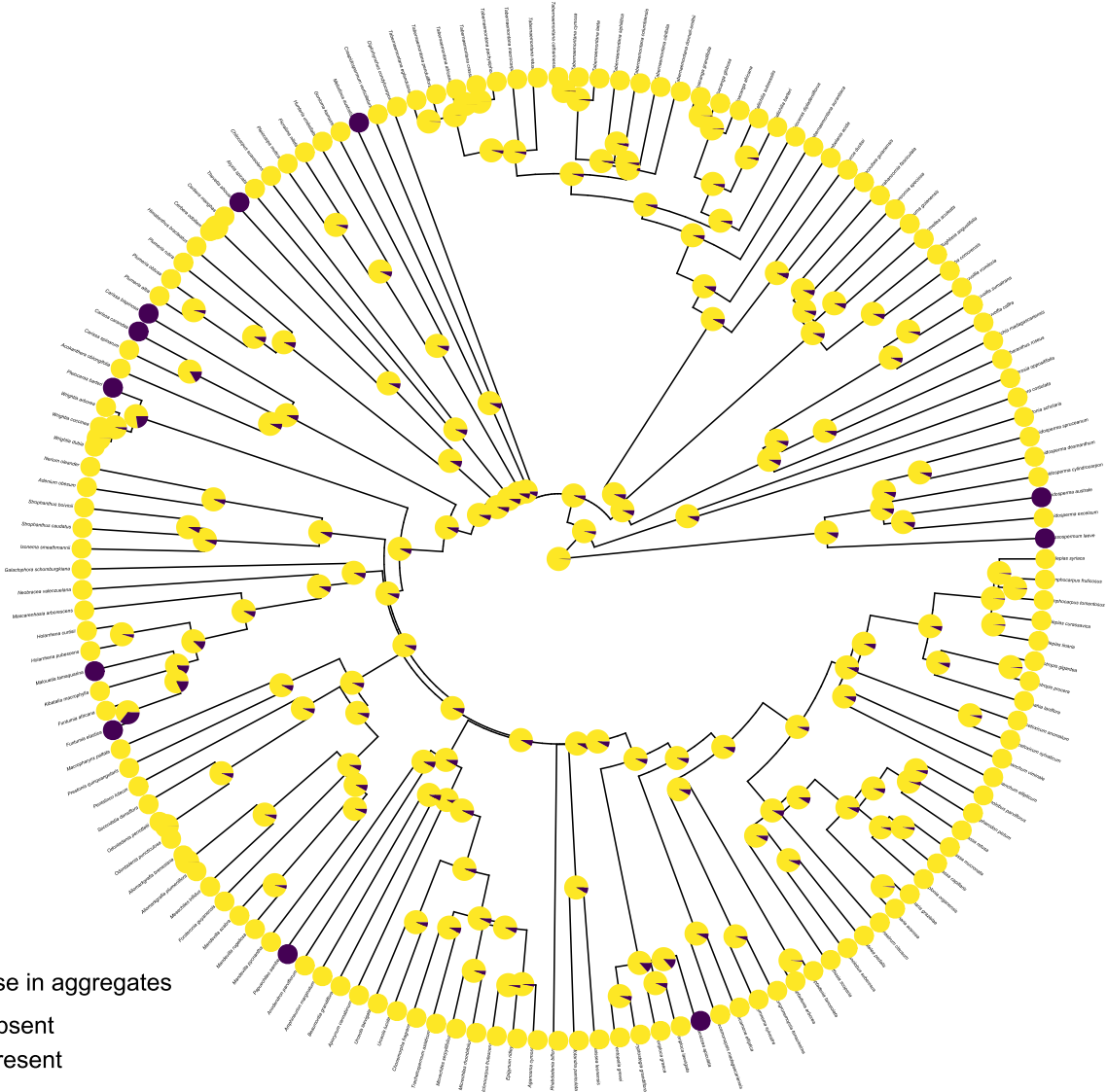


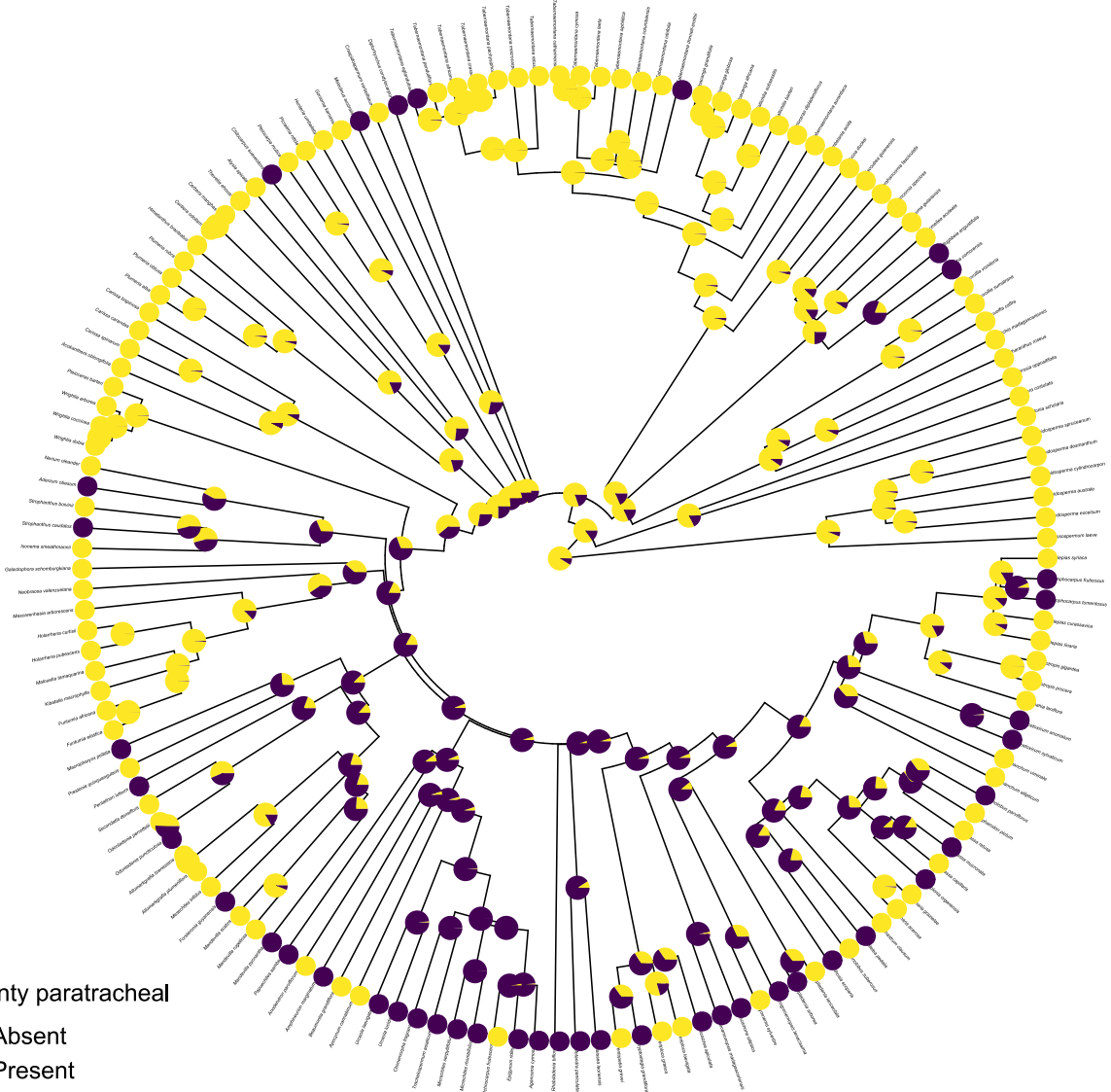
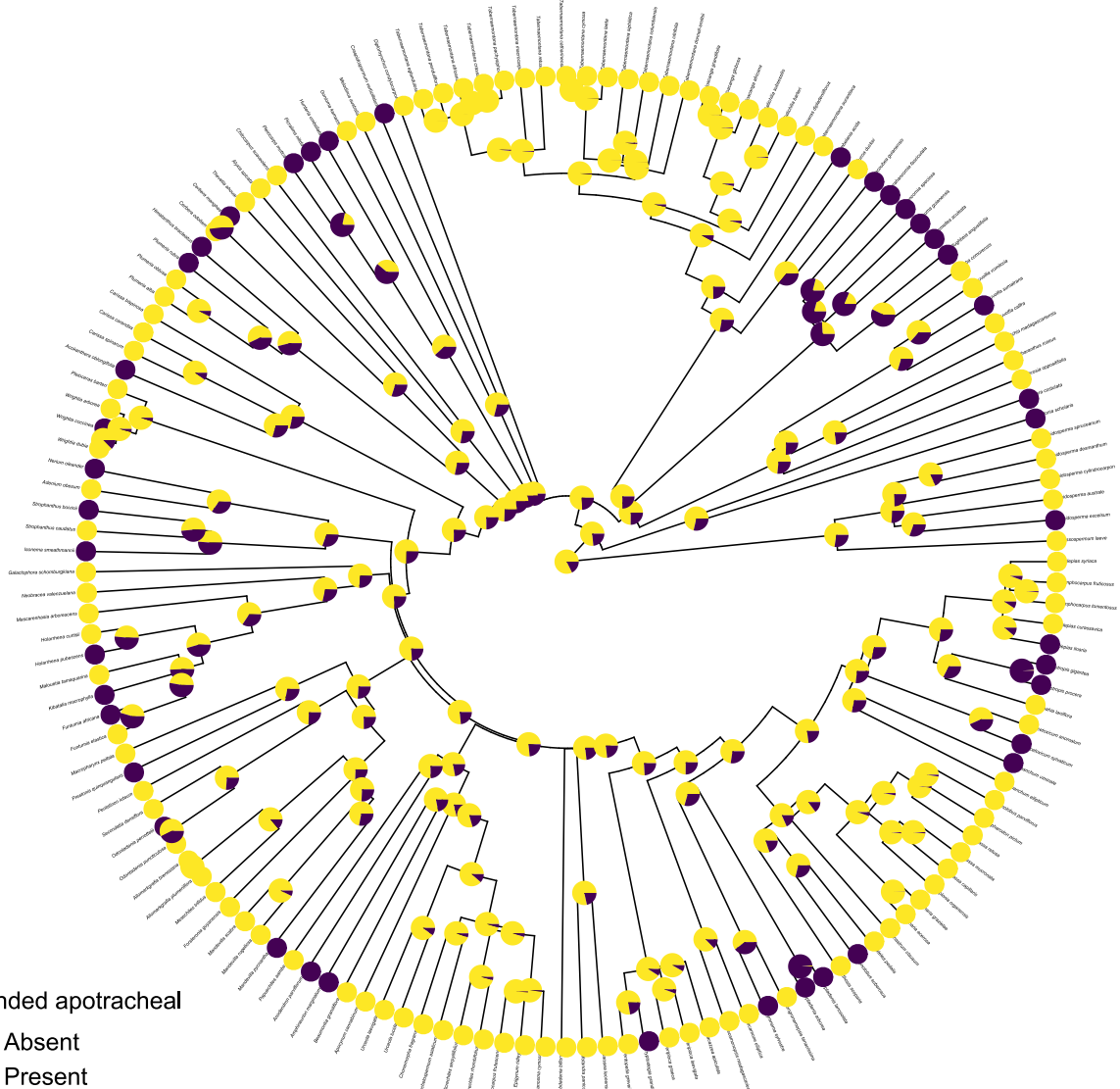
Vessel multiples

- Absent
- Present



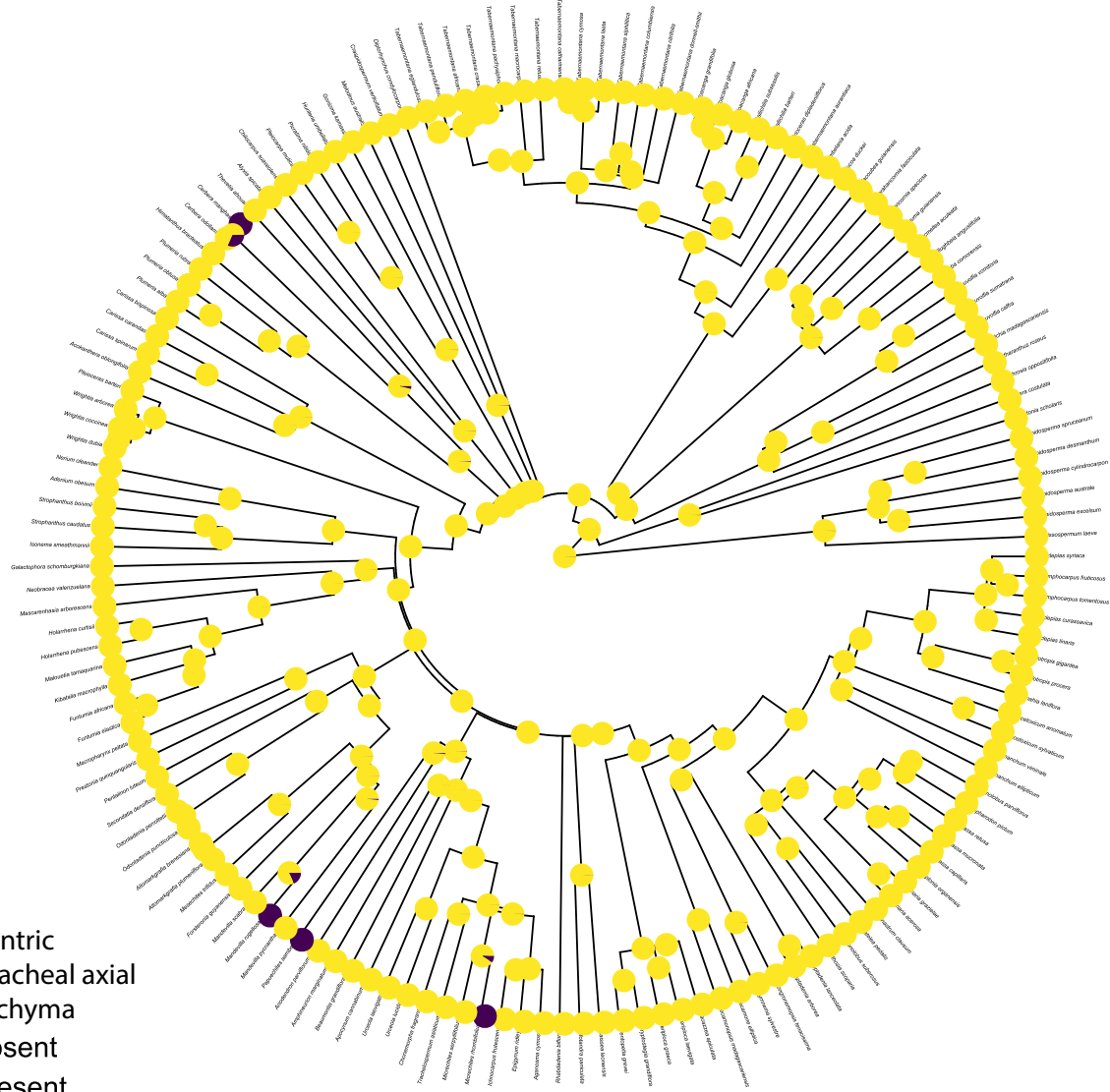






Vasicentric
paratracheal axial
parenchyma

- Absent
- Present



Fibre cell
wall thickness

- Thick
- Thin
- ThinThick

