

Figure S6

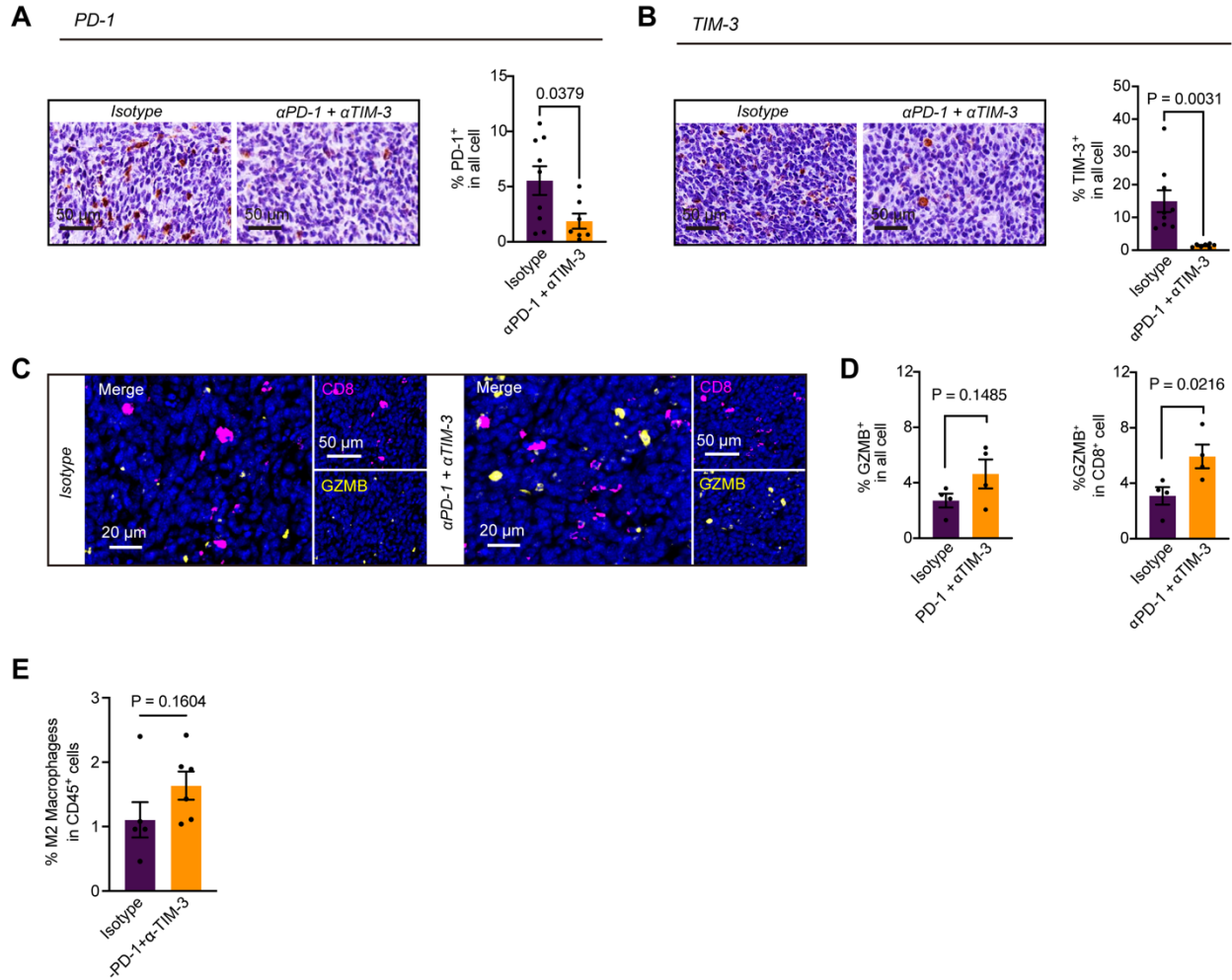


Figure S6

Immune cell status changes after α PD-1 + α TIM-3 treatment. **A**, Representative immunohistochemistry and quantification for PD-1 protein expression levels in CT26 tumors treated with isotype or α PD-1 + α TIM-3. Data are presented as mean \pm s.e.m, and determined by two-tailed unpaired t-test. **B**, Representative immunohistochemistry and quantification for TIM-3 protein expression levels in CT26 tumors treated with isotype or α PD-1 + α TIM-3. Data are presented as mean \pm s.e.m, and determined by two-tailed unpaired t-test. **C**, Representative image of multiplex immunofluorescence staining (CD8, red; GZMB, yellow) in isotype or α PD-1 + α TIM-3 treatment tumor. **D**, mIHC quantification of GZMB⁺ cells, GZMB⁺ T cells as a percentage of all cells or CD8⁺ cells. Data are presented as mean \pm s.e.m, and determined by two-tailed unpaired t-test. **E**, M2 macrophages are shown as a percentage of CD45⁺ cells. The data are presented as the mean \pm s.e.m, and were analyzed by two-tailed unpaired t-tests.