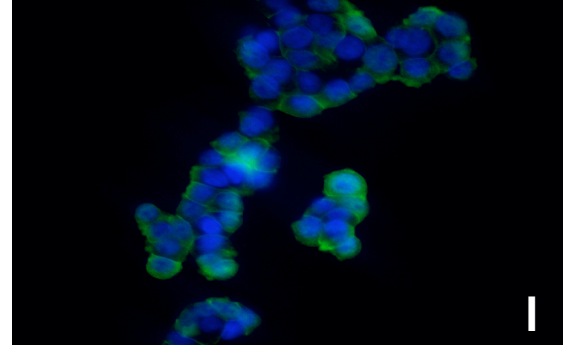
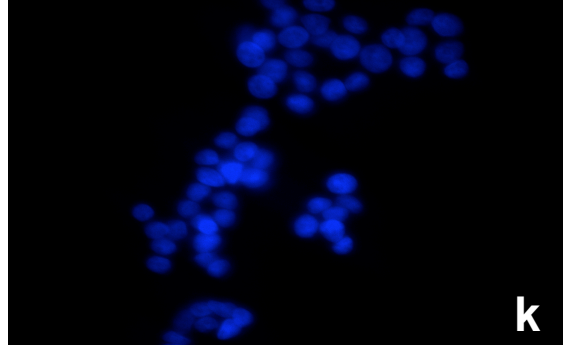
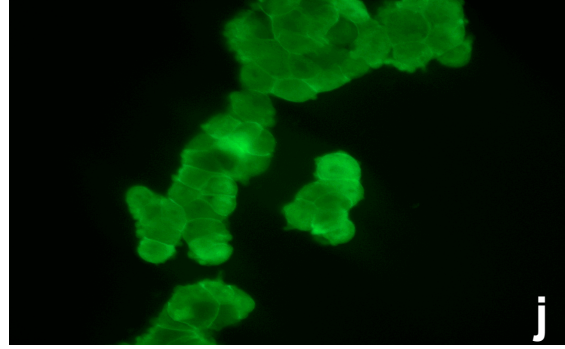
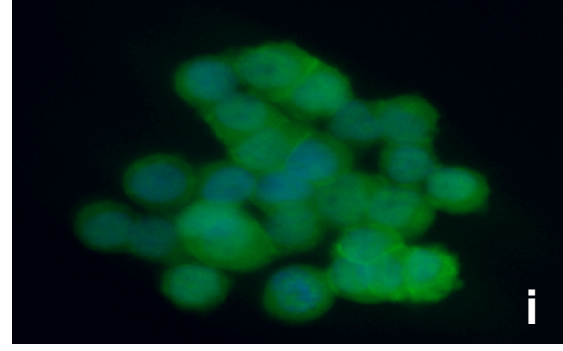
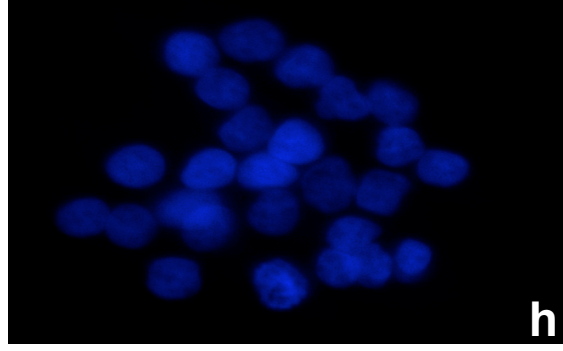
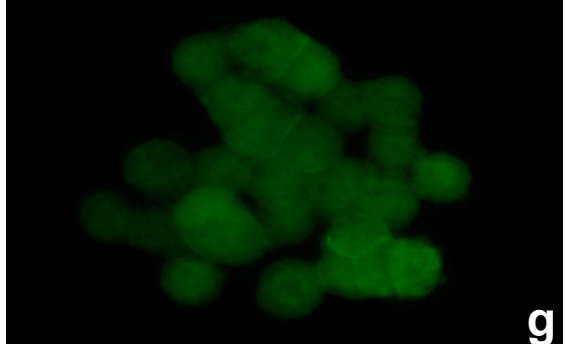


Supplementary Figure 1: Represents total RNA extracted from cell lines used for analysis of claudin-1 protein expression and subjected to semi-quantitative RT-PCR analysis using primers against human claudin-1. Primers for actin were used in the same reaction as internal control for amplification.

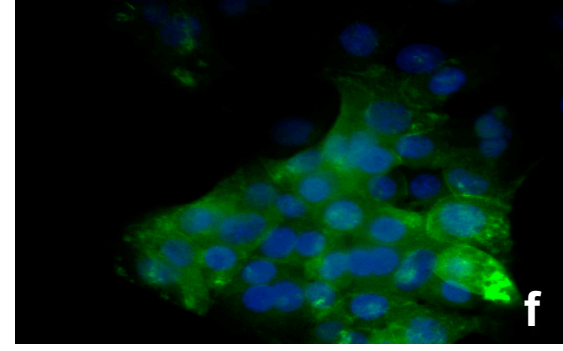
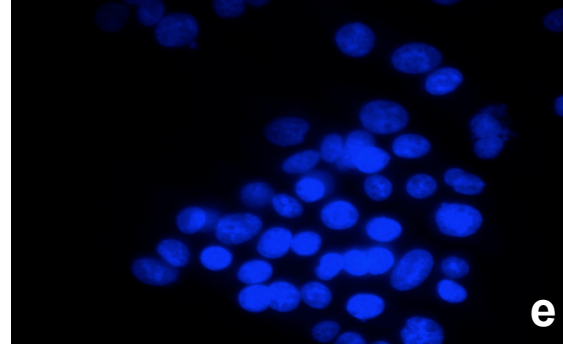
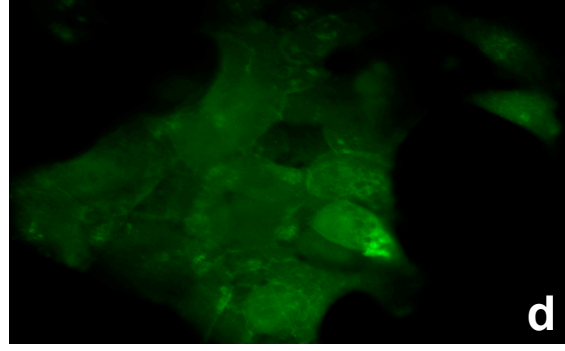
SW620^{siRNA}



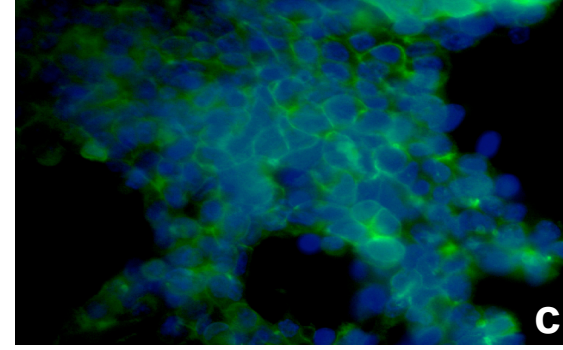
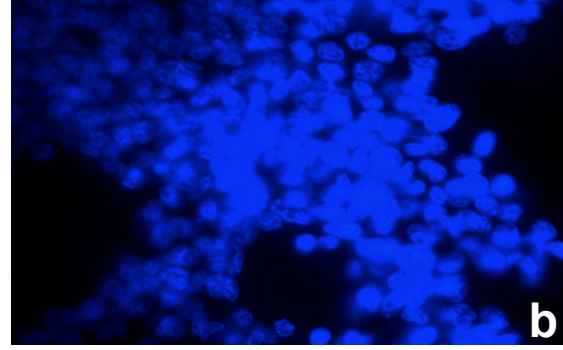
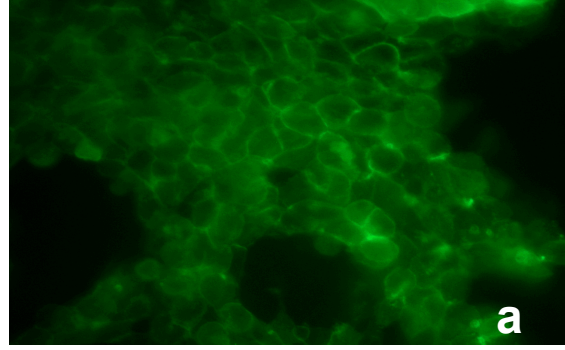
SW620^{Control}



SW480^{claudin-1}



SW480^{Control}



Supplementary Figure 2: Demonstrates co-localization of β -catenin (green) with DAPI (blue), which is confirmed by overlay (purple) in SW480^{control}, SW480^{claudin-1}, SW620^{control} and SW620^{siRNA} cells.