

Figure 1 - DNA gel to assess *Qpc* recombination by genomic PCR

Figure 1A

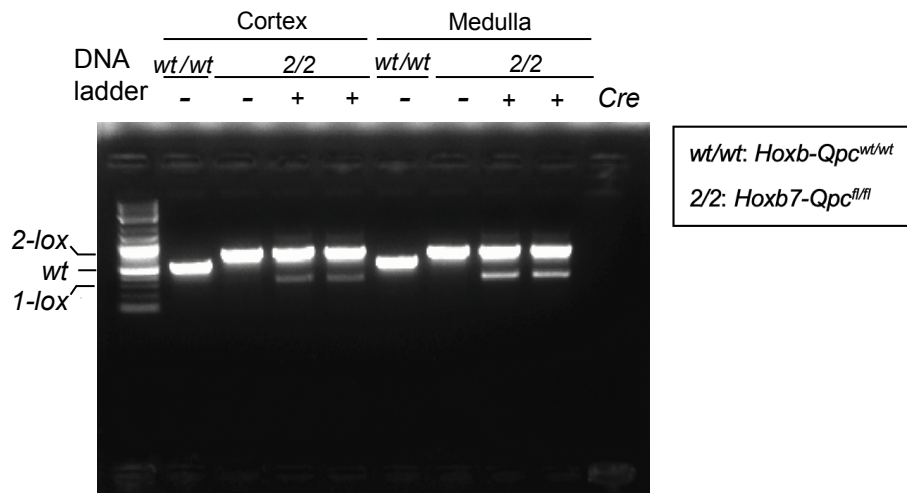


Figure 3 - Whole kidney lysates used to assess total AQP2

Figure 3A

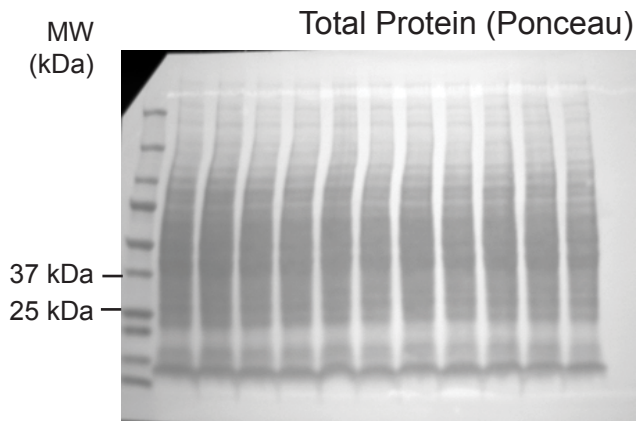
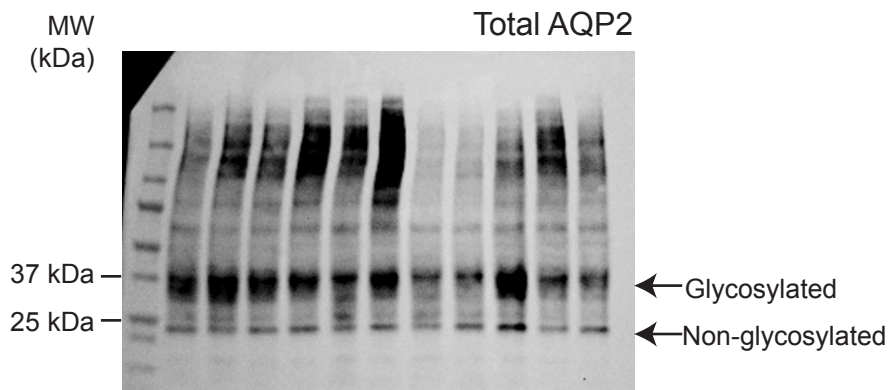


Figure 5 - IMCD cell lysates treated with antimycin A and/or SBI

Figure 5B, Panel 1

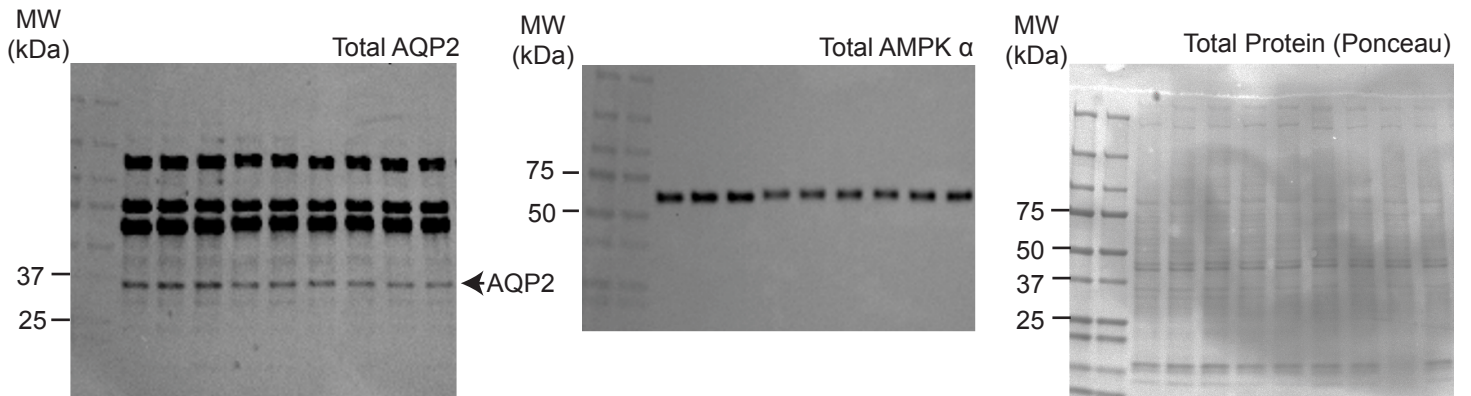


Figure 5B, Panel 2

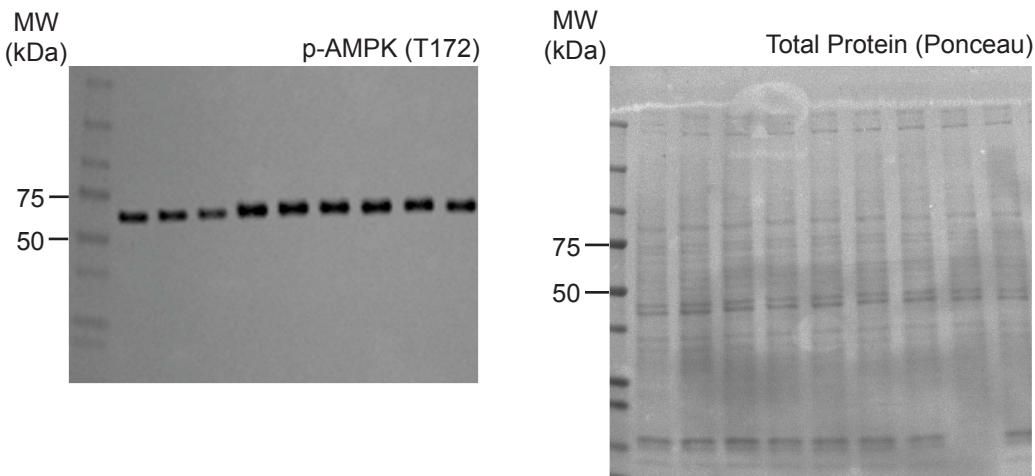


Figure 5C

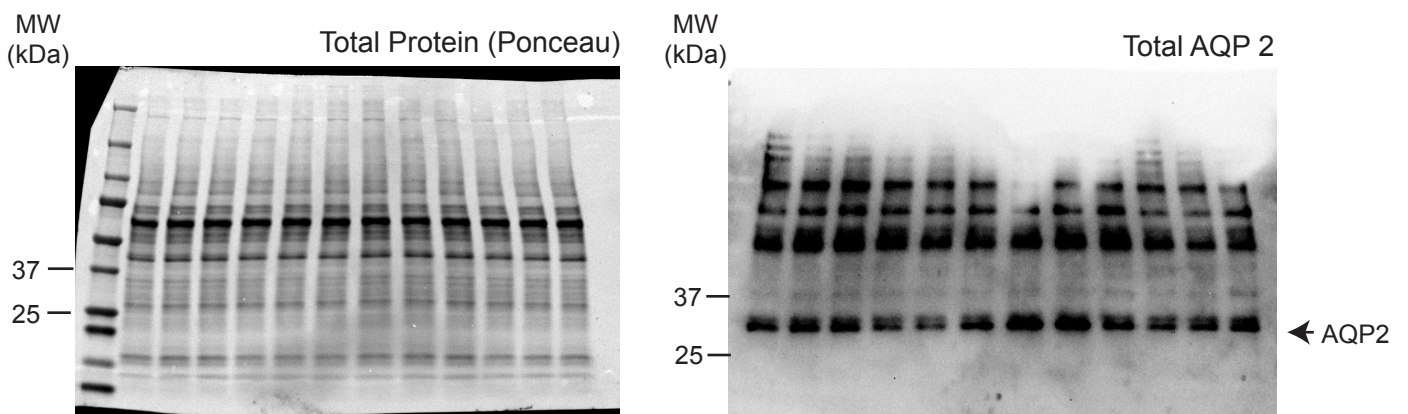


Figure 6 - Whole kidney lysates used to assess total AMPK α and p-AMPK (T172)

Figure 6A

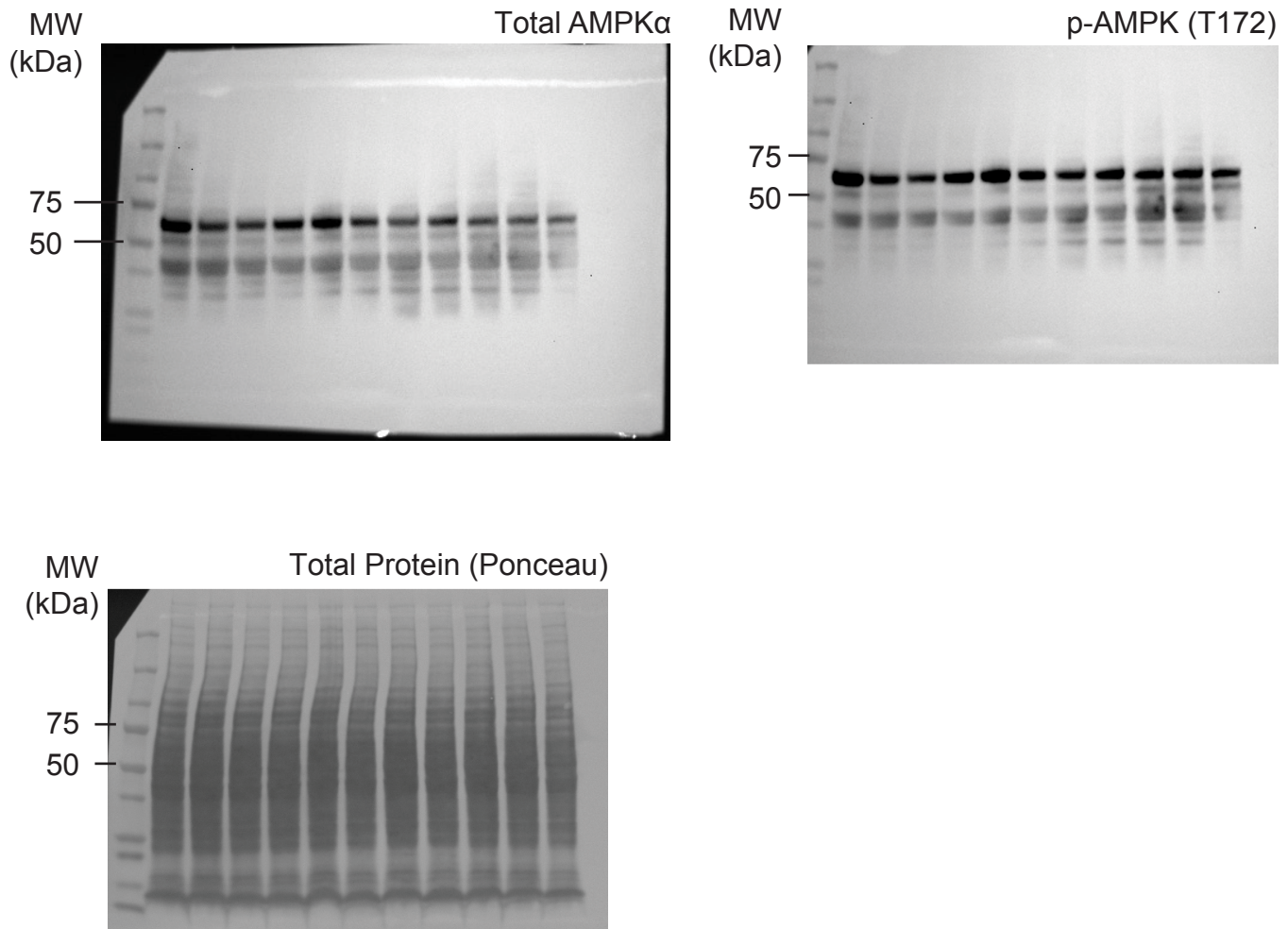
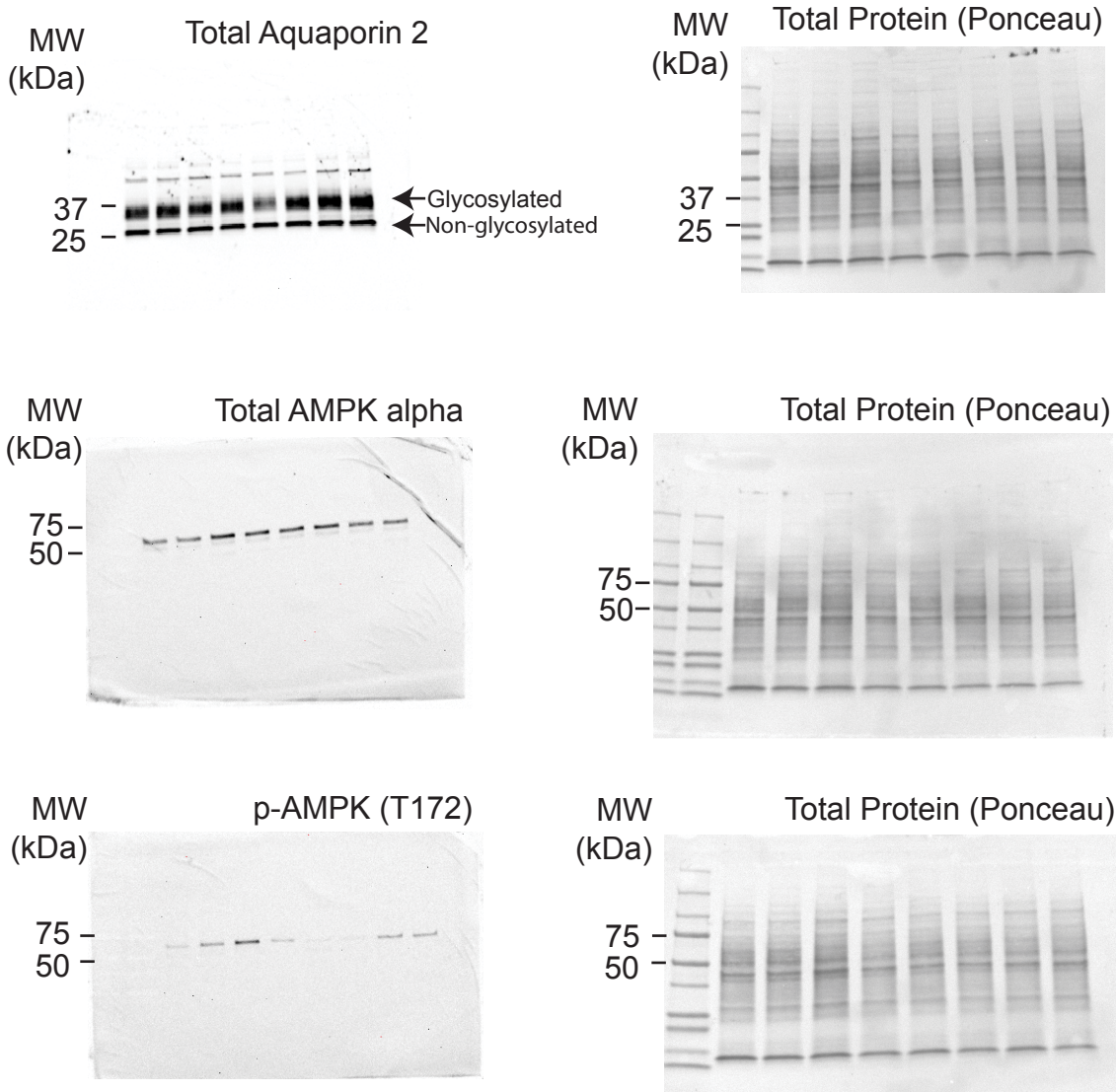
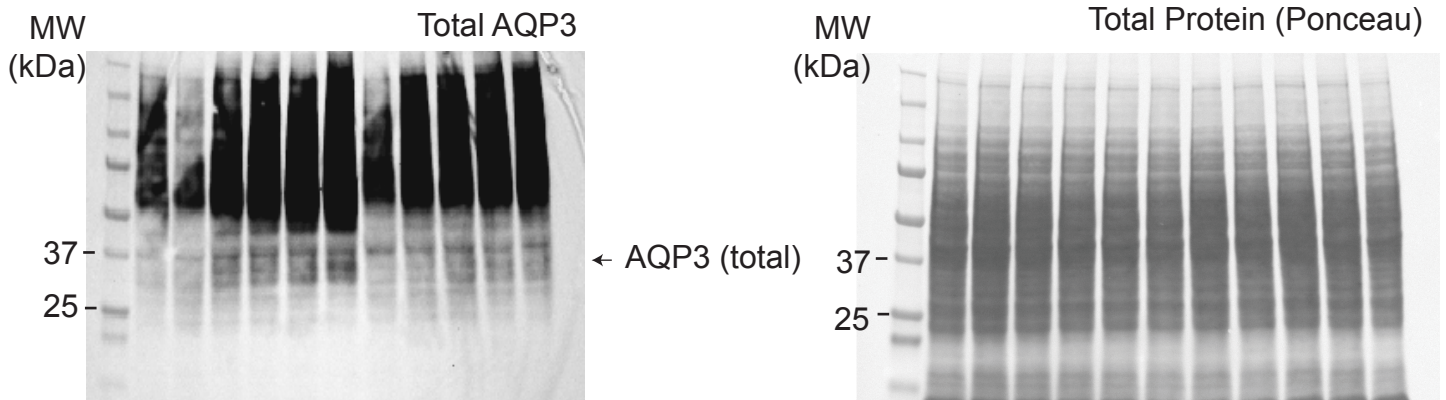


Figure 7 - Whole kidney lysates used to assess total Aqp2, AMPK, and p-AMPK (T172) post SBI treatment

Figure 7B



Supplementary Figure S3 - Whole kidney lysates used to assess total AQP3



Supplementary Figure S4 - Whole kidney lysates used to assess total Na⁺/K⁺ ATPase α 1

