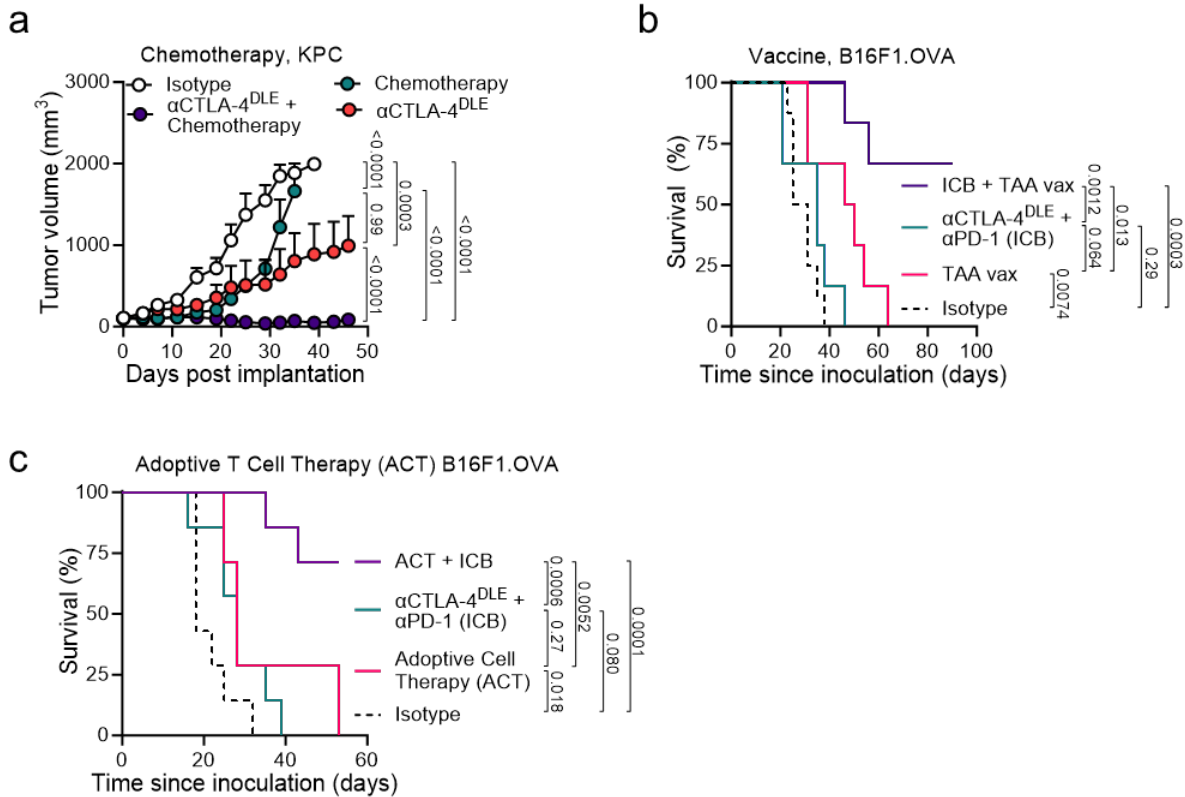


1 **Supplementary Figure S6**



2

3 **Supplementary Figure S6. αCTLA-4^{DLE} promotes broad combination activity in diverse**

4 **tumor-bearing mouse models. (a)** Tumor growth of C57BL/6 mice bearing subcutaneous KPC

5 tumors (n=10-15 mice/group) treated with αCTLA-4^{DLE} or isotype alone or in combination with

6 gemcitabine, cisplatin, and nab-paclitaxel. **(b)** C57BL/6 mice bearing B16F1.OVA tumors treated

7 with αCTLA-4^{DLE} and αPD-1 (ICB), and/or HSC70-OVA-TRP2 vaccine plus QS21 and CpG (TAA

8 vax). **(c)** C57BL/6 mice bearing subcutaneous B16F1.OVA tumors treated with OVA-specific CD8

9 T cells (ACT), ICB, or isotype antibody. Data analyzed by mixed-effects models with matched

10 data followed by Tukey's multiple comparisons test **(a)** or pairwise log-rank test **(b, c)**.