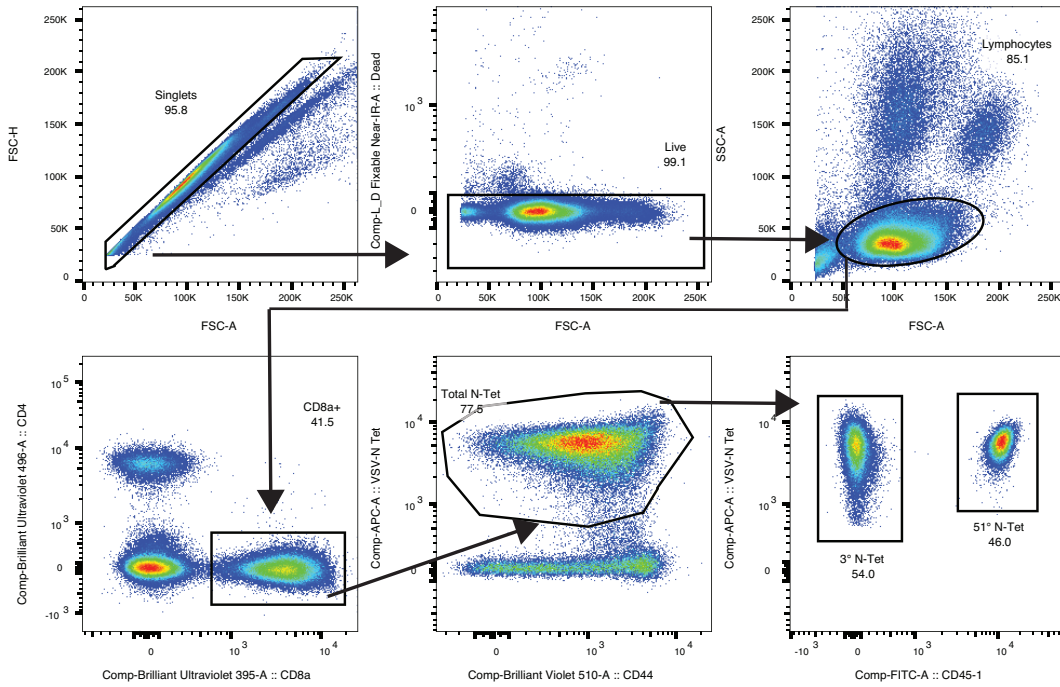

Supplementary information

**Functional T cells are capable of
supernumerary cell division and longevity**

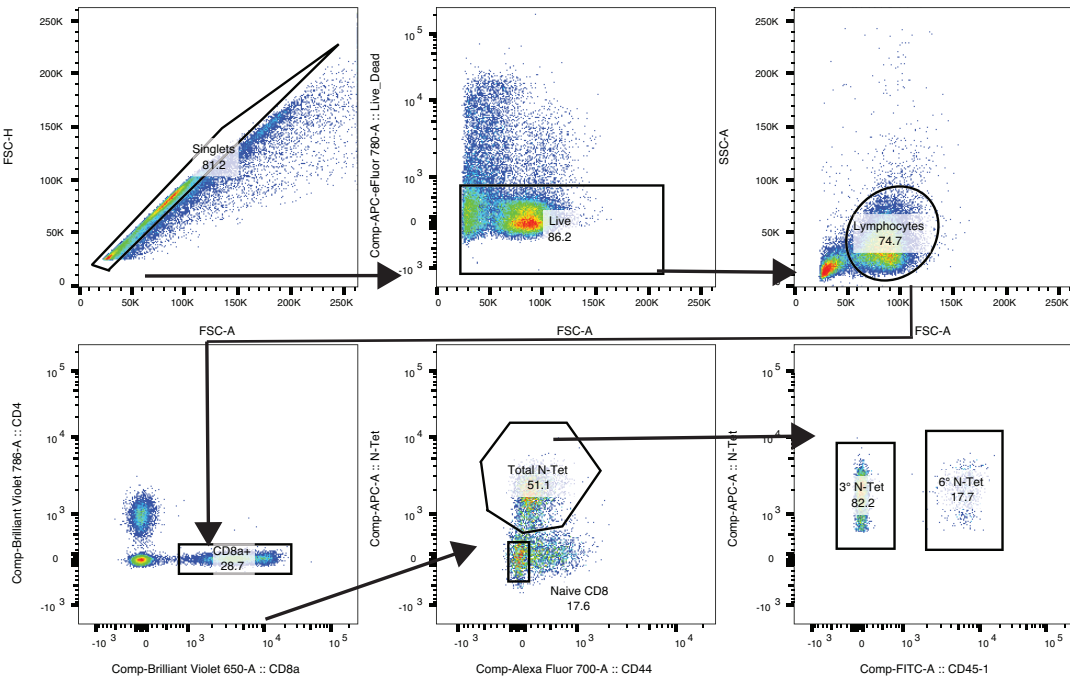
In the format provided by the
authors and unedited

Figure 1 Gating Schemes

Example gating used in Fig 1a, b



Example gating used in Fig 1c



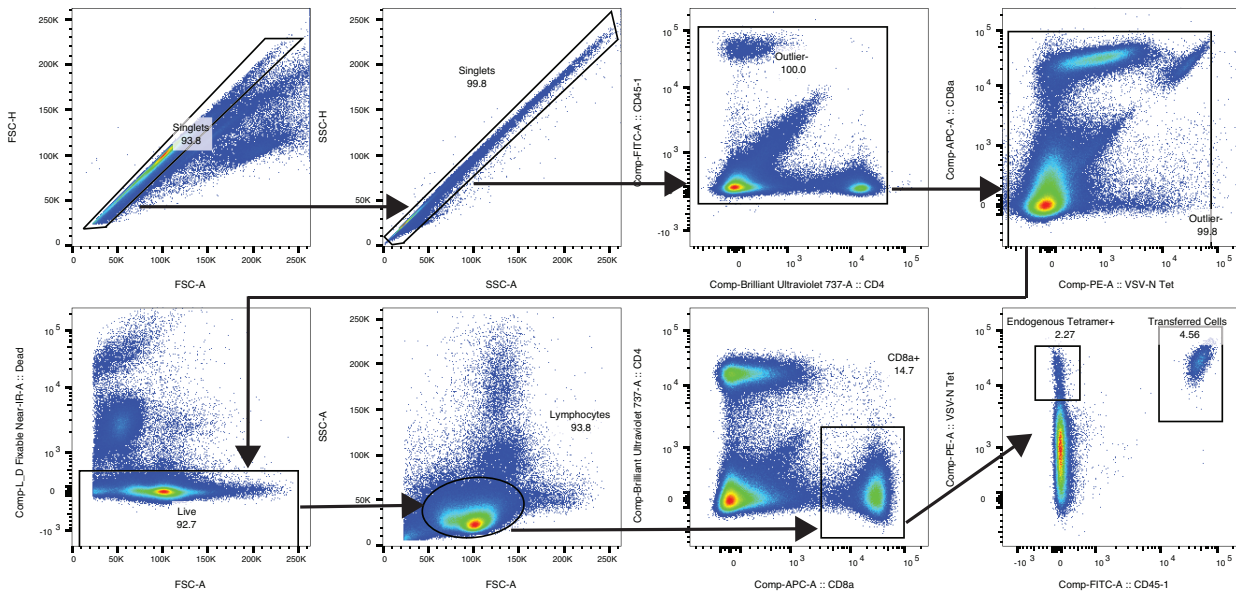
Supplementary fig. 1: Example of gating strategies to detect endogenous and transferred CD45.1+ tetramer+ cells in fig. 1

Figure 1a: 60+ Day Boosting							
Days post 4 ⁺	number of mice	Days post 4 ⁺	number of mice	Days post 4 ⁺	number of mice		
0	4	590	4	1749	10	2688	10
8	4	619	4	1757	10	2708	10
15	4	762	4	1809	10	2710	10
29	4	771	4	1820	9	2719	10
36	4	778	4	1856	9	2739	10
50	4	799	4	1876	9	2771	10
64	4	828	4	1878	10	2779	10
71	4	842	4	1885	10	2836	8
85	4	864	4	1913	10	2845	8
99	4	899	4	1939	10	2898	8
113	4	918	3	1956	10	2901	15
128	4	925	3	1976	10	2908	15
135	3	941	3	2009	10	2935	15
146	3	948	3	2017	10	2961	15
191	5	988	3	2037	10	2971	15
198	5	1016	3	2059	10	3051	15
205	5	1025	3	2087	10	3039	15
226	5	1039	3	2095	10	3092	15
240	5	1081	3	2149	10	3098	10
254	5	1102	3	2157	10	3105	10
261	5	1108	3	2180	10	3159	9
267	5	1151	3	2220	10	3167	9
275	5	1158	5	2228	10	3220	9
289	5	1165	5	2283	10	3227	9
317	5	1218	5	2297	10	3282	9
324	5	1394	5	2305	10	3284	10
331	5	1403	5	2312	10	3291	10
352	5	1448	5	2359	10	3346	10
379	5	1455	5	2372	10	3354	10
380	5	1471	3	2430	10	3408	12
387	5	1476	3	2438	10	3416	9
394	5	1485	3	2491	10	3471	9
419	5	1532	3	2507	10		
444	5	1577	3	2514	10		
450	5	1593	3	2521	10		
457	5	1631	3	2548	10		
477	5	1648	3	2568	10		
505	5	1659	3	2576	10		
513	5	1668	10	2596	10		
520	5	1675	10	2610	10		
541	5	1682	10	2638	10		
583	4	1716	10	2646	10		

Figure 1b: 28-34 Day Boosting					
Days post 4 ⁺	number of mice	Days post 4 ⁺	number of mice	Days post 4 ⁺	number of mice
0	5	556	5	1099	9
8	5	566	5	1107	9
28	5	587	5	1128	9
36	5	595	5	1136	9
56	5	615	5	1156	9
64	5	617	10	1158	5
86	5	629	10	1164	5
88	5	644	10	1185	5
97	5	651	10	1195	5
114	5	673	10	1217	4
125	5	681	10	1224	5
143	5	701	10	1247	5
154	5	703	10	1250	5
171	5	710	10	1256	5
175	5	730	10	1280	5
182	5	740	10	1288	5
204	5	762	10	1308	5
211	5	770	10	1316	5
234	5	791	10	1337	5
244	5	792	10	1339	5
265	5	799	9	1346	10
268	10	825	9	1367	10
275	10	833	9	1375	10
295	10	857	9	1395	10
303	10	866	9	1406	10
323	10	888	9	1423	10
331	10	890	10		
351	10	897	10		
353	5	918	10		
360	5	926	10		
381	5	947	10		
391	5	958	10		
413	5	979	10		
421	5	980	10		
441	5	986	7		
443	5	1009	7		
454	5	1016	7		
470	5	1038	7		
499	5	1046	7		
505	5	1065	7		
528	5	1071	10		
535	5	1078	9		

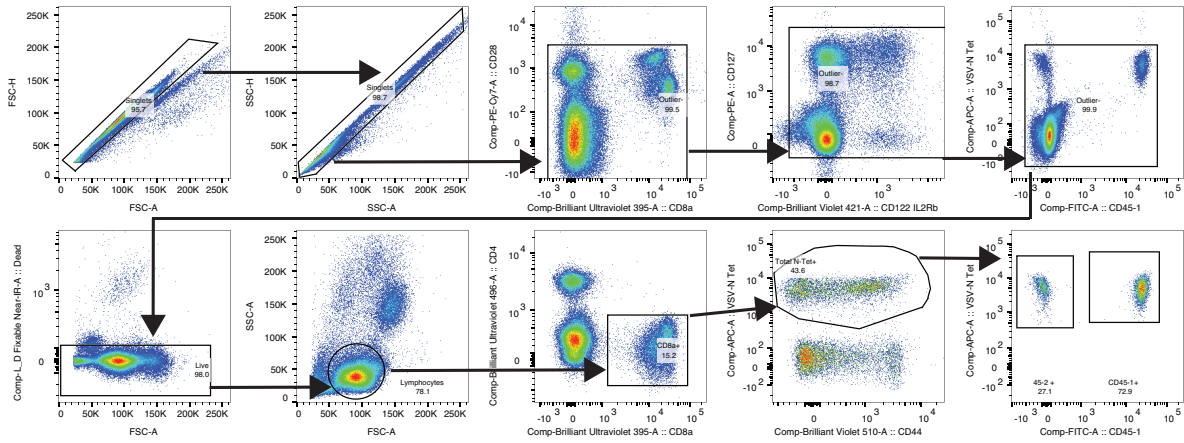
Supplementary table 1: The number of mice at each time point in fig. 1a (60+ day boosting) and fig. 1b (28-34 day boosting).

Figure 2b Gating Scheme

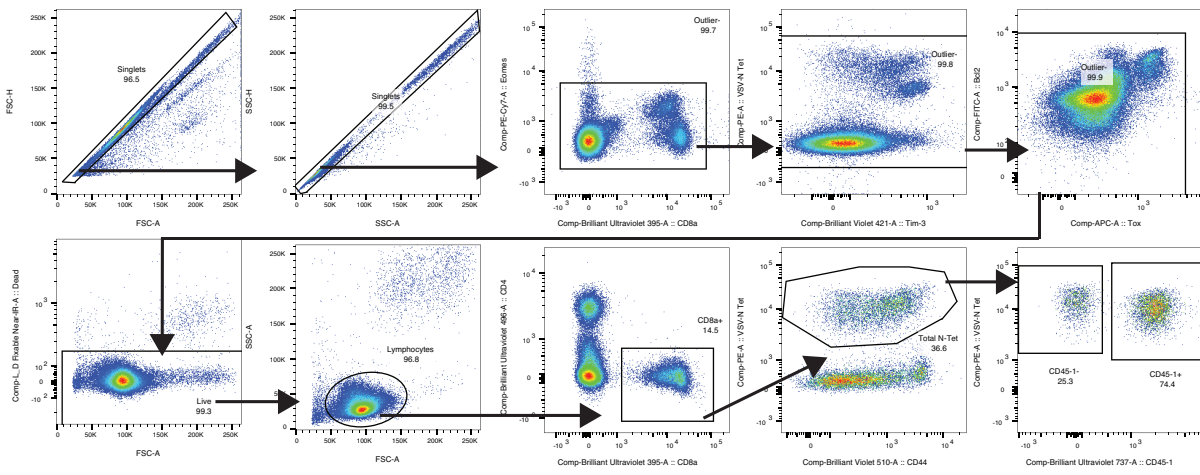


Supplementary fig. 2: Gating scheme for cells shown in fig. 2b.

Figure 3 Gating Schemes
Extracellular only stain



Extracellular and intracellular stain



Supplementary fig. 3: Gating schemes for cells in fig. 3

Figure 4 Gating Schemes

Figure 4a gating scheme

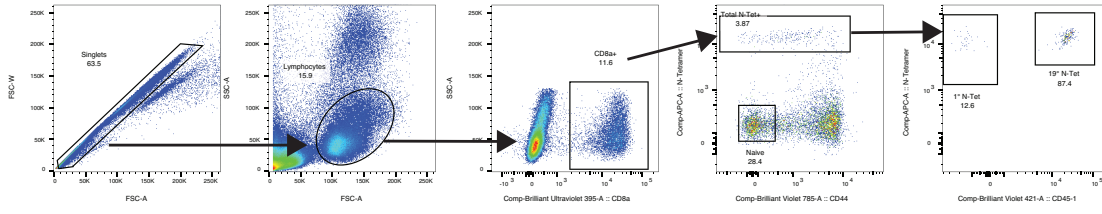


Figure 4e gating scheme

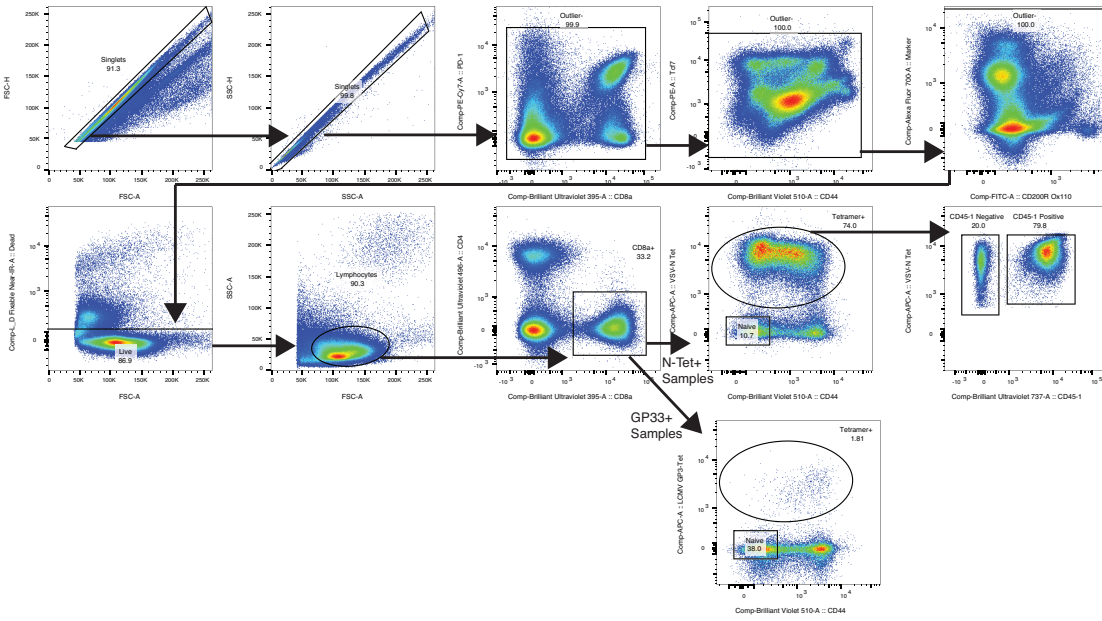
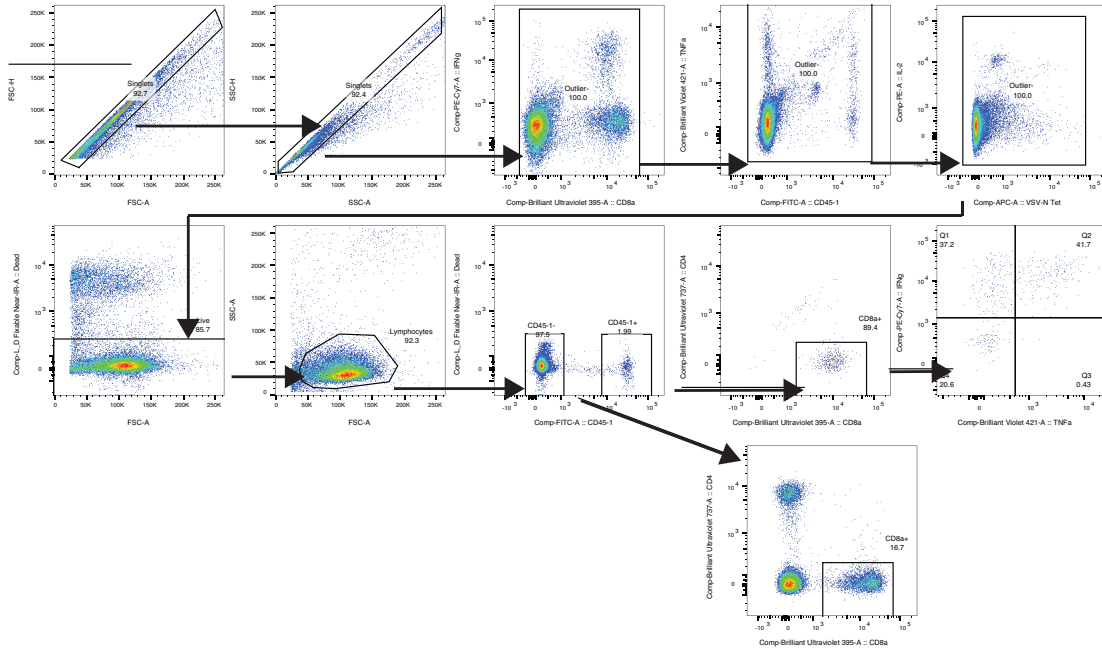


Figure 4g gating scheme



Supplementary fig. 4: Gating schemes for cells in fig. 4.