

0 2 4 8 14 26 weeks

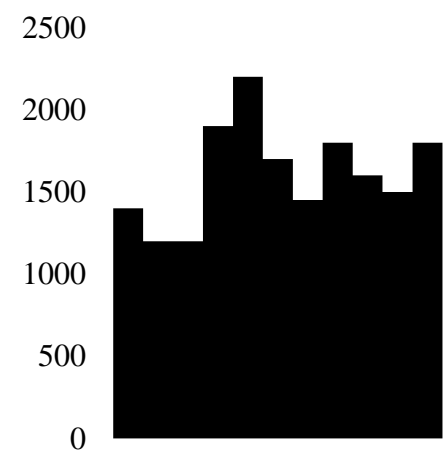
Discontinuation of supplement →

Discharge from hospital (day 13)

**Kidney biopsy
acute proximal tubular injury**

1200 mg/day 2400 mg/day 1200 mg/day
Potassium chloride

Urine output (mL/day)



Creatinine (mg/dL)	3.0	1.98	1.53	1.61	1.56	1.34
Bicarbonate (mEq/L)	13.6	22.1	21.9	25.1	25.4	NA
Potassium (mEq/L)	2.4	2.3	3.3	4.2	4.1	4.0
Phosphorus (mg/dL)	2.4	1.4	2.0	3.1	3.7	3.5
Uric acid (mg/dL)	2.4	1.9	2.1	2.5	3.3	3.7
Urinary protein (g/gCr)	2.41	1.58	1.49	0.8	0.37	0.16
Urinary glucose	3+	2+	1+	-	-	-
Urinary β_2 -MG (μ g/L)	50,857	80,162	99,539	49,140	16,187	4,570