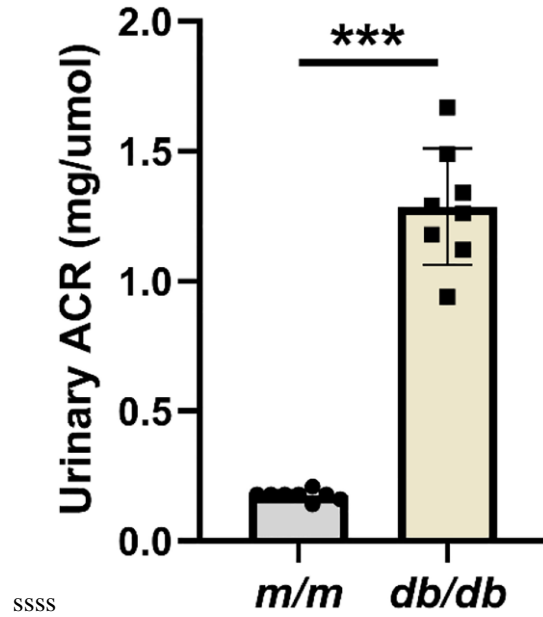
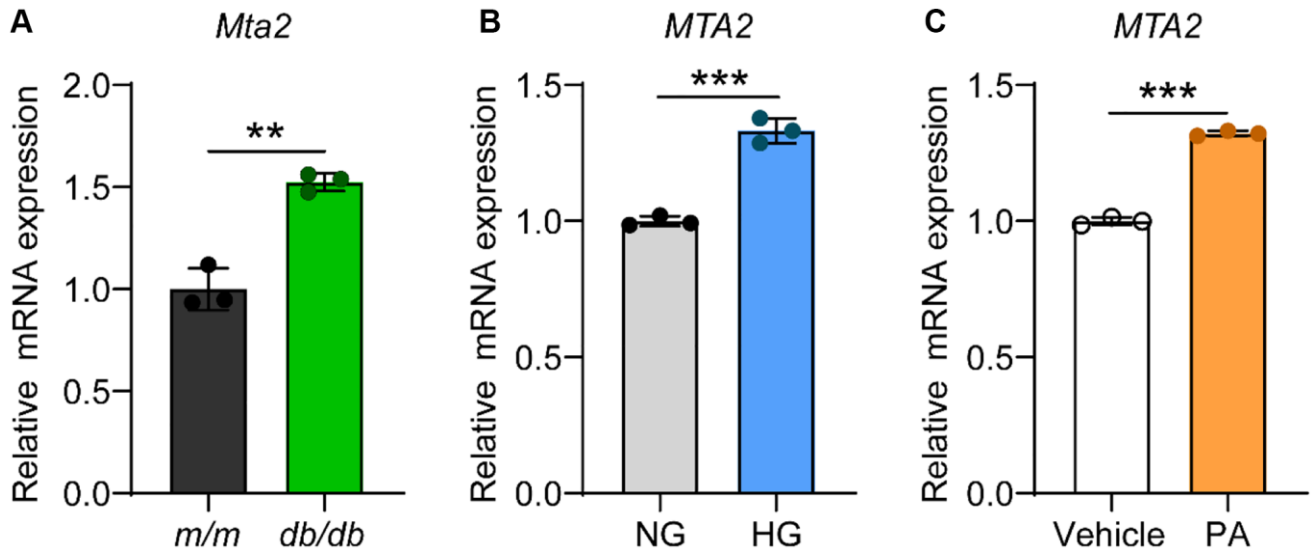


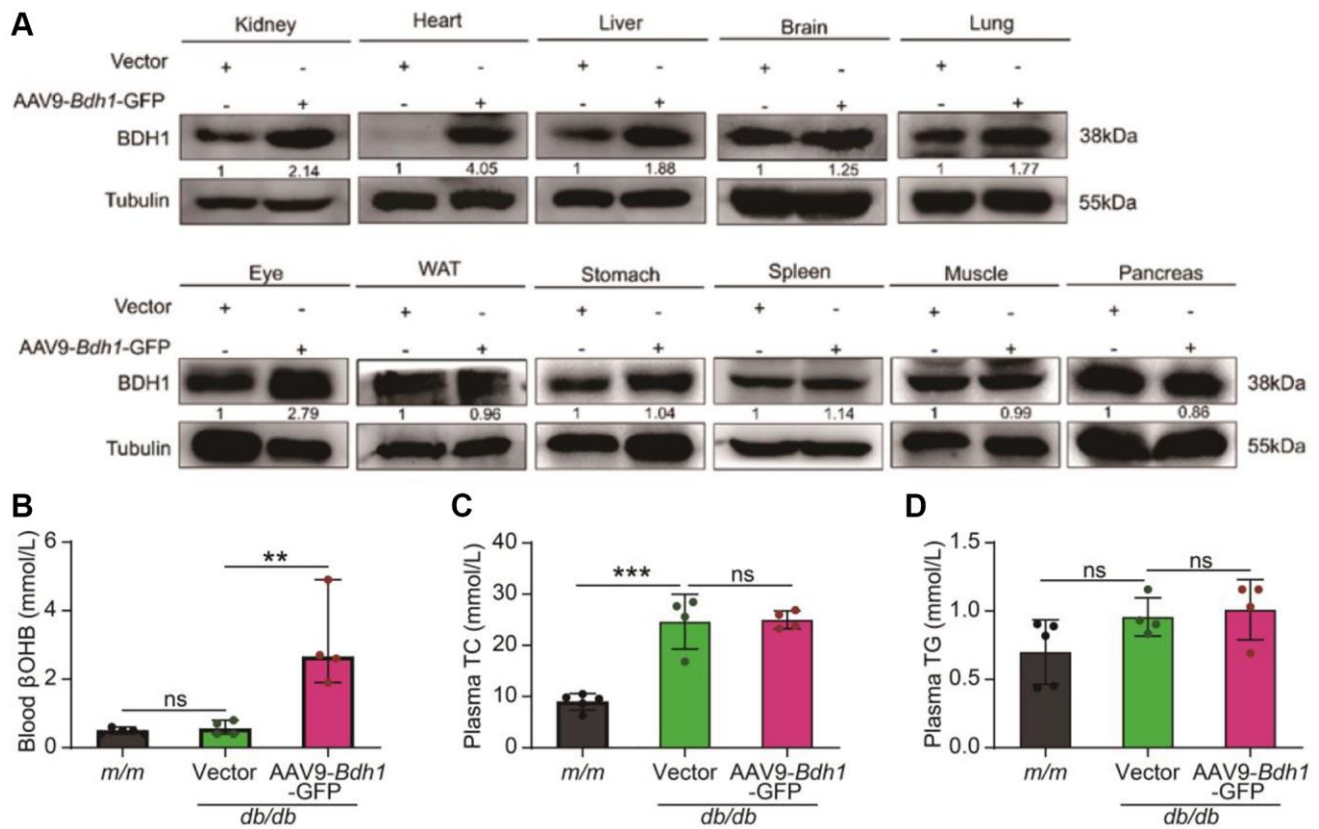
SUPPLEMENTARY FIGURES



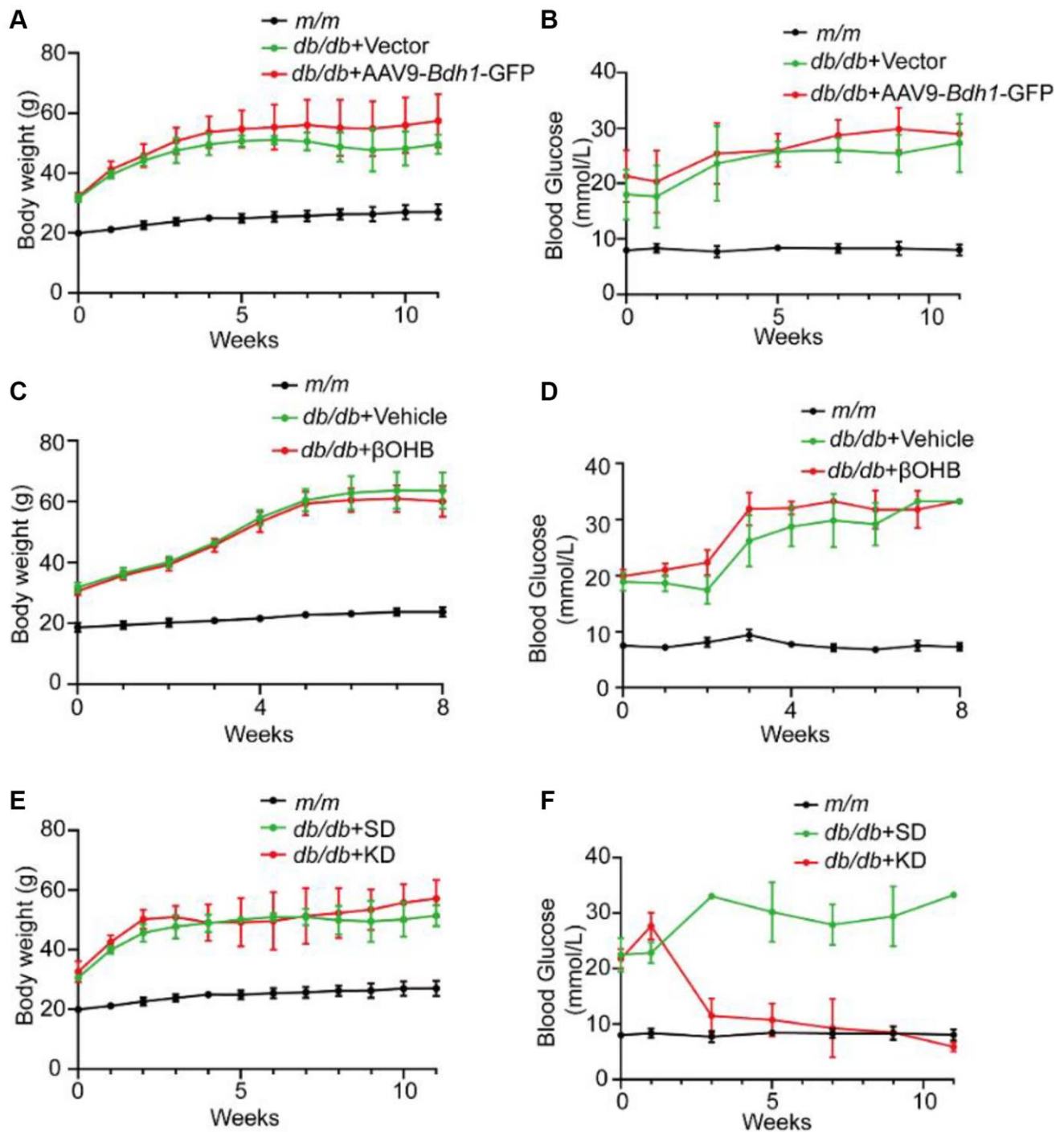
Supplementary Figure 1. Urinary ACR in *m/m* and *db/db* group (*n* = 8 in per group). Abbreviation: ACR: albumin-to-creatinine ratio. ****P* < 0.001.



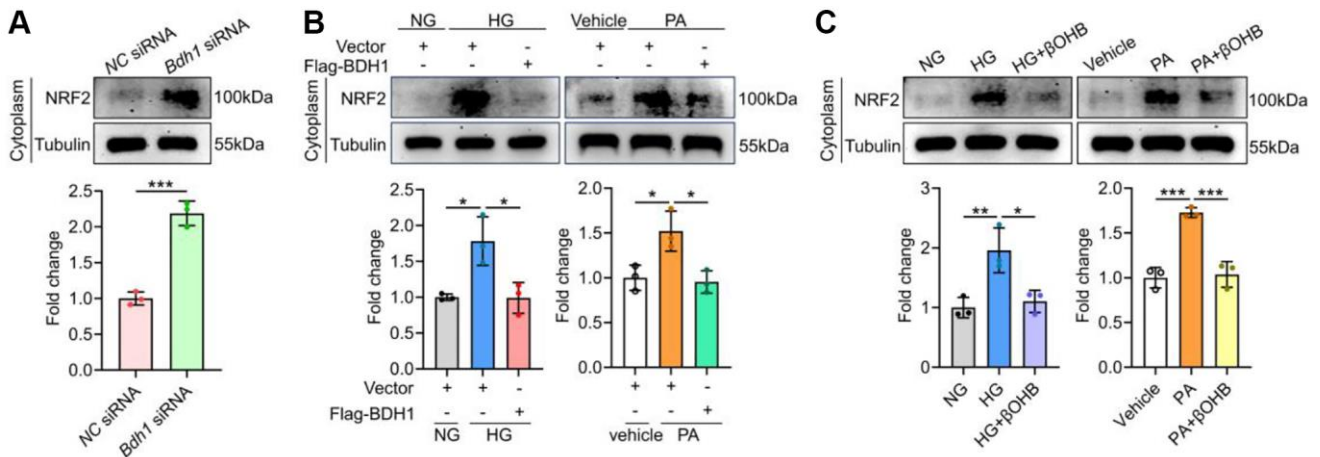
Supplementary Figure 2. qRT-PCR analysis showing the mRNA level of *Mta2* in the kidneys (A) of *m/m* and *db/db* mice (*n* = 3 per group) and HK-2 cells treated with HG (B) or PA (C). All results are representative of three independent experiments. Values are presented as mean ± standard deviation. ***P* < 0.01; ****P* < 0.001.



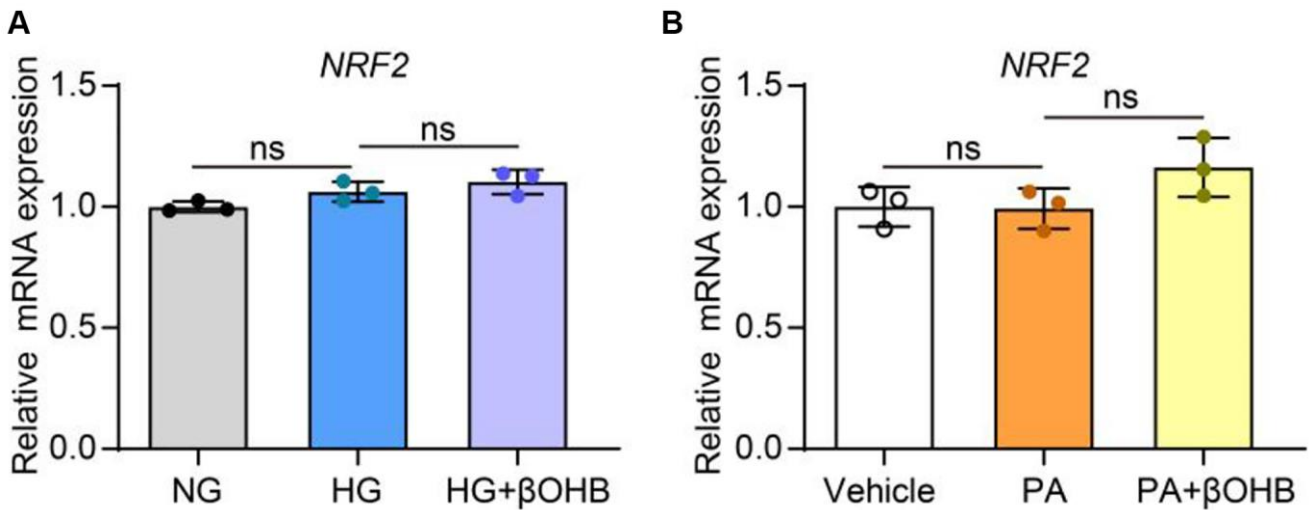
Supplementary Figure 3. (A) BDH1 protein expression levels after AAV9-Bdh1-GFP injection in all major organs in the mice body were detected. (B) Blood level of β OHB in mice from the indicated groups ($n = 5$ in *m/m* group, $n = 4$ in vector, and AAV-Bdh1-GFP injected *db/db* group). (C) Plasma TC in mice from the indicated groups ($n = 5$ in *m/m* group, $n = 4$ in vector, and AAV-Bdh1-GFP injected *db/db* group). (D) Plasma TG in mice from the indicated groups ($n = 5$ in *m/m* group, $n = 4$ in vector, and AAV-Bdh1-GFP injected *db/db* group). Abbreviations: BDH1: β -hydroxybutyrate dehydrogenase 1; TC: total cholesterol; TG: total triglyceride. ** $P < 0.01$; *** $P < 0.001$; Abbreviation: ns: no significance.



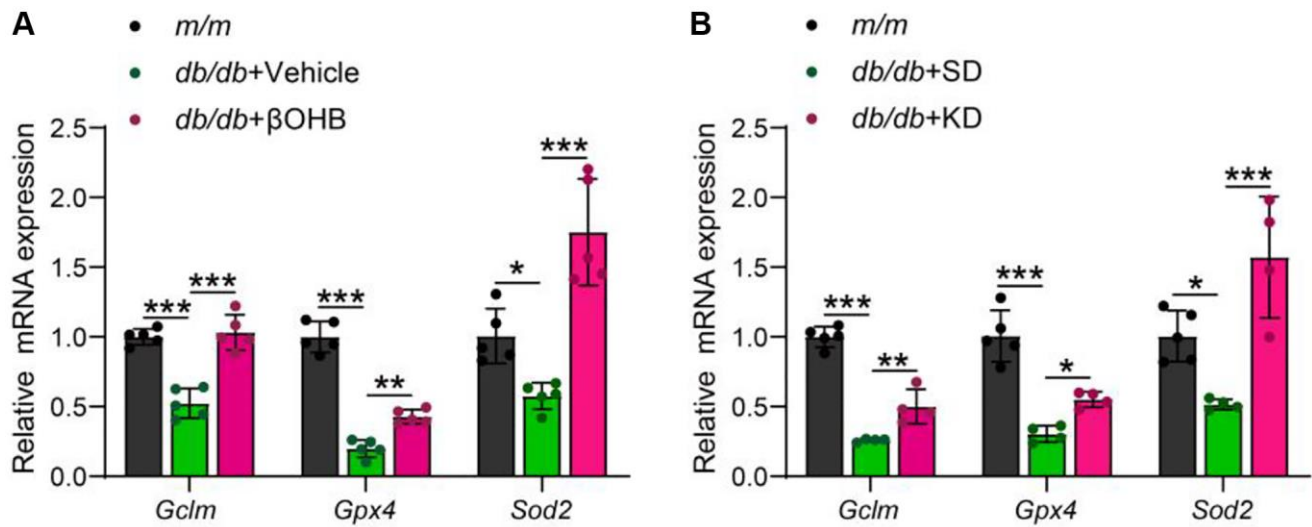
Supplementary Figure 4. Body weight (A) and fasted blood glucose (B) of mice in the indicated groups ($n = 5$ in *m/m* group, $n = 4$ in vector, and AAV-*Bdh1*-GFP injected *db/db* group). Body weight (C) and fasted blood glucose (D) of mice in the indicated groups ($n = 5$ per group). Body weight (E) and fasted blood glucose (F) of mice in the indicated groups ($n = 5$ in *m/m* group; $n = 4$ in SD and KD groups).



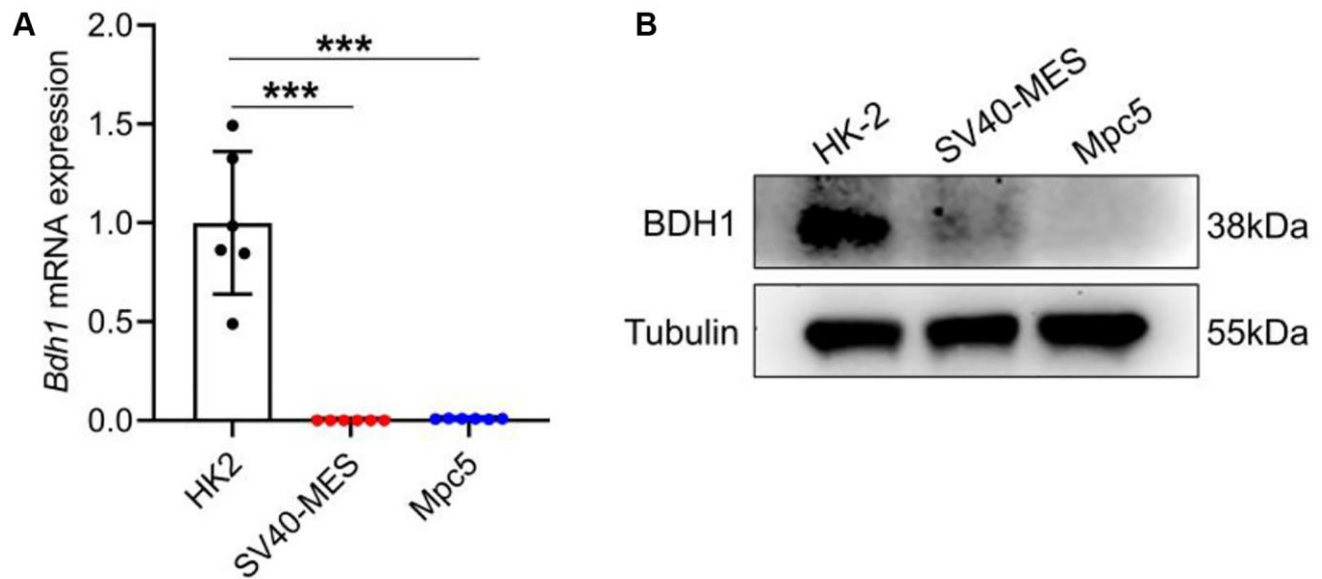
Supplementary Figure 5. (A) Representative WB image showing the protein level of NRF2 protein in the cytoplasm of HK-2 cells transfected with NC siRNA or *Bdh1* siRNA. (B) Representative WB images showing the protein level of NRF2 in the cytoplasm of BDH1-overexpressed HK-2 cells treated with HG or PA. (C) Representative WB images showing the protein level of NRF2 in the cytoplasm of β OHB-supplemented HK-2 cells treated with HG or PA. All results are representative of three independent experiments. Values are presented as mean \pm standard deviation. Abbreviations: BDH1: β -hydroxybutyrate dehydrogenase 1; β OHB: β -hydroxybutyrate; WB: western blot; HG: high glucose; PA: palmitic acid. * $P < 0.05$; ** $P < 0.01$; *** $P < 0.001$.



Supplementary Figure 6. qRT-PCR analysis showing the *NRF2* mRNA levels of β OHB-supplemented HK-2 cells treated with HG (A) or PA (B). All results are representative of three independent experiments. Values are presented as mean \pm standard deviation. Abbreviation: ns: no significance.



Supplementary Figure 7. qRT-PCR analysis showing the mRNA levels of *Gclm*, *Gpx4*, and *Sod2* in mice kidneys. (A) The mRNA levels of *Gclm*, *Gpx4*, and *Sod2* in the kidneys of *m/m* group ($n = 5$), *db/db* + Vehicle ($n = 4$), and *db/db* + βOHB group ($n = 4$). (B) The mRNA levels of *Gclm*, *Gpx4*, and *Sod2* in the kidneys of *m/m* group ($n = 5$), *db/db* + SD ($n = 4$), and *db/db* + KD group ($n = 4$). All results are representative of three independent experiments. Values are presented as mean ± standard deviation. Abbreviations: βOHB: β-hydroxybutyrate; SD: standard diet; KD: ketogenic diet. * $P < 0.05$; ** $P < 0.01$; *** $P < 0.001$.



Supplementary Figure 8. (A) qRT-PCR analysis showing the mRNA level of *Bdh1* in HK-2 cells, SV40-MES cells, and Mpc5 cells. **(B)** WB analysis showing the protein level of BDH1 in HK-2 cells, SV40-MES cells, and Mpc5 cells. *** $P < 0.001$.