

iScience, Volume 27

Supplemental information

**Trade-offs among human, animal, and environmental
health hinder the uniform
progress of global One Health**

**Ya Tian, Junze Zhang, Zonghan Li, Kai Wu, Min Cao, Jian Lin, Prajal Pradhan, Shengjie
Lai, Jia Meng, Bojie Fu, Min Chen, and Hui Lin**

SUPPLEMENTARY INFORMATION

Table S3. The number of countries categorized into three score-level configurations for human, animal, and environmental health from 2000 to 2020, Related to Figure 1

Table S4. The average degree and average weighted degree of One Health targets in the synergy networks, Related to Figure 4

Table S5. The average degree and average weighted degree of One Health targets in the trade-off networks, Related to Figure 4

Figure S1. Global scores and their score growth maps of human health, animal health, environmental health, and One Health index, Related to Figure 1

Figure S2. Global spatial configurations of score levels (Table S3) for human health, animal health, environmental health, and One Health index from 2000 to 2020, Related to Figure 1

Figure S3. Differences in the proportion of synergies and trade-offs between and within human, animal, and environmental health at the national scale, Related to Figure 2

Figure S4. Correlation between the One Health index and the proportions of synergies (S) or trade-offs (T) within and between human, animal, and environmental health in countries worldwide in 2000, respectively, at three levels of the OH index, Related to Figure 3

Figure S5. Correlation between the One Health index and the proportions of synergies (S) or trade-offs (T) within and between human, animal, and environmental health in countries worldwide in 2005, respectively, at three levels of the OH index, Related to Figure 3

Figure S6. Correlation between the One Health index and the proportions of synergies (S) or trade-offs (T) within and between human, animal, and environmental health in countries worldwide in 2010, respectively, at three levels of the OH index, Related to Figure 3

Figure S7. Correlation between the One Health (OH) index and the proportions of synergies (S) or trade-offs (T) within and between human, animal, and environmental health in countries worldwide in 2015, respectively, at three levels of the OH index, Related to Figure 3

Figure S8. Correlation between the One Health index and the proportions of synergies (S) or trade-offs (T) within and between human, animal, and environmental health in countries around the world from 2000 to 2020, Related to Figure 3

Figure S9. Detected the proportion of synergies and trade-offs between different One Health targets and within the same OH target, from 2000 to 2020, Related to Figure 4

Figure S10. Flowchart for One Health assessment and evaluation of synergies and trade-offs among human, animal, and environmental health on global and national scales, Related to STAR Methods

Supplementary Tables

Table S3. The number of countries categorized into three score-level configurations for human, animal, and environmental health from 2000 to 2020, Related to Figure 1.

Type	Human health(h)	Animal health(a)	Environmental health(e)	2000	2005	2010	2015	2020
I	L _h	L _a	L _e	15	14	10	11	9
II	L _h	L _a	M _e	14	12	5	4	5
III	L _h	L _a	H _e	0	0	0	0	0
IV	L _h	M _a	L _e	8	6	11	6	8
V	L _h	M _a	M _e	13	14	12	13	9
VI	L _h	M _a	H _e	0	0	0	0	0
VII	L _h	H _a	L _e	0	0	0	0	0
VIII	L _h	H _a	M _e	0	0	0	0	0
IX	L _h	H _a	H _e	0	0	0	0	0
X	M _h	L _a	L _e	11	6	10	11	12
XI	M _h	L _a	M _e	24	18	16	16	16
XII	M _h	L _a	H _e	1	0	0	0	0
XIII	M _h	M _a	L _e	7	8	10	14	17
XIV	M _h	M _a	M _e	34	43	39	30	28
XV	M _h	M _a	H _e	0	0	0	0	0
XVI	M _h	H _a	L _e	2	0	1	0	1
XVII	M _h	H _a	M _e	7	8	6	5	4
XVIII	M _h	H _a	H _e	0	0	0	0	0
XIX	H _h	L _a	L _e	0	0	0	0	0
XX	H _h	L _a	M _e	0	1	3	5	3
XXI	H _h	L _a	H _e	0	0	0	0	0
XXII	H _h	M _a	L _e	2	2	3	2	2
XXIII	H _h	M _a	M _e	5	7	12	20	17
XXIV	H _h	M _a	H _e	0	0	0	0	0
XXV	H _h	H _a	L _e	0	0	0	0	0
XXVI	H _h	H _a	M _e	2	6	10	11	17
XXVII	H _h	H _a	H _e	0	0	0	0	0

Note: The classification criteria for the human health (h), animal health(a), and environmental health(e) scores are as follows: Those with scores ≥ 80 as performing well (H), those with scores ≤ 60 as facing substantial challenges (L), and those with scores between 60 and 80 as performing moderately (M). These configurations present both score levels and health dimensions.

Table S4. The average degree and average weighted degree of One Health targets in the synergy networks, Related to Figure 4.

Ranking	One Health target	Average Degree	Average Degree	Weighted Degree
1	H1	17		1122.39
2	H3	16		1090.45
3	H2	17		1036.66
4	A3	17		946.64
5	E5	17		943.38
6	H6	16		892.37
7	E1	16		877.66
8	H8	13		860.22
9	H4	13		790.01
10	E4	16		744.91
11	H7	16		737.07
12	E3	14		732.73
13	A2	14		720.19
14	E2	16		636.53
15	A4	12		396.06
16	H5	4		313.85

Note: The descriptions of the One Health indicators refer to Table S1.

Table S5. The average degree and average weighted degree of One Health targets in the trade-off networks, Related to Figure 4.

Ranking	One Health target	Average Degree	Average Degree	Weighted Degree
1	E2	16		810.86
2	H7	16		743.01
3	A4	12		737.30
4	E4	16		721.25
5	E5	17		673.11
6	E1	16		647.02
7	E3	14		586.19
8	A3	17		581.21
9	H6	16		577.55
10	H2	17		564.04
11	A2	14		526.18
12	H3	16		509.55
13	H1	17		493.07
14	H4	13		443.92
15	H8	13		379.50
16	H5	4		75.53

Note: The descriptions of the One Health indicators refer to Table S1.

Supplementary Figures

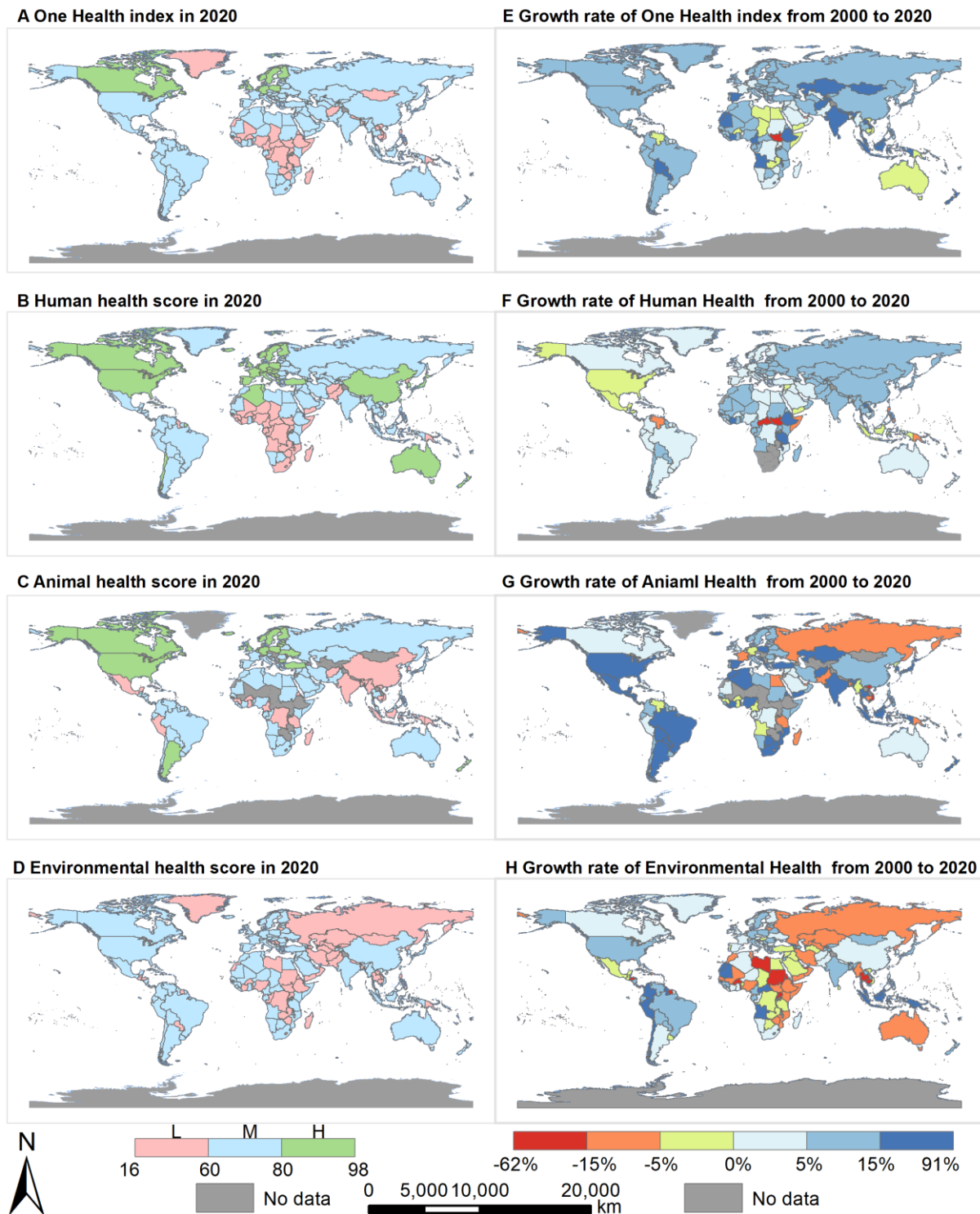


Figure S1. Global scores and their score growth maps of human health, animal health, environmental health, and One Health index, Related to Figure 1.

(A-D) Global score map of human health, animal health, environmental health, and One Health index in 2020. (E-H) Score growth rate of the One Health index, human health, animal health, and environmental health from 2000 to 2020.

The three levels include countries with scores ≥ 80 as performing well (H), those with scores ≤ 60 as facing substantial challenges (L), and with scores ranging from 60 to 80 as performing moderately (M).

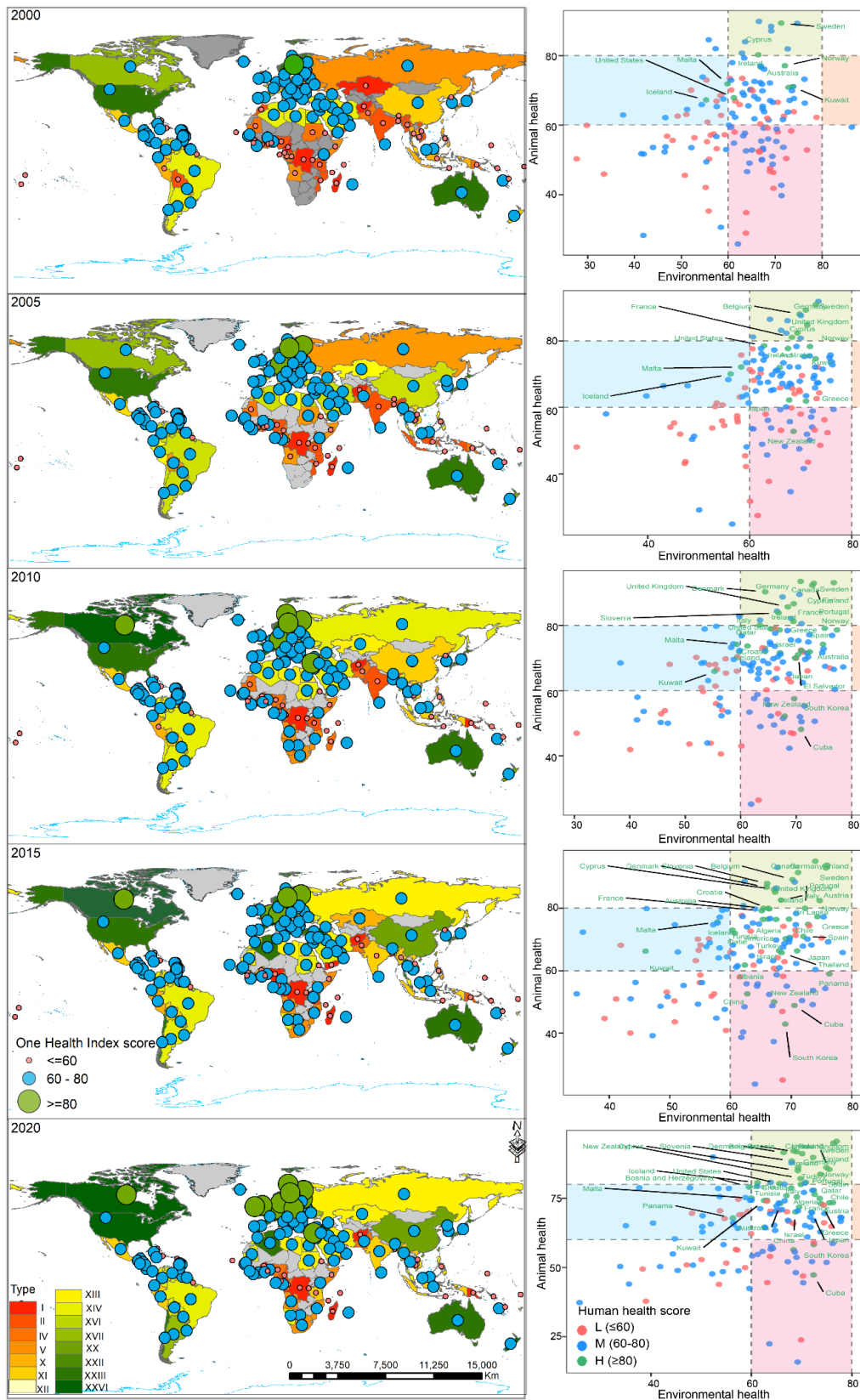


Figure S2. Global spatial configurations of score levels (Table S3) for human health, animal health, environmental health, and One Health index from 2000 to 2020, Related to Figure 1. Scatter plots show the human, animal, and environmental health scores in global countries from 2000 to 2020.

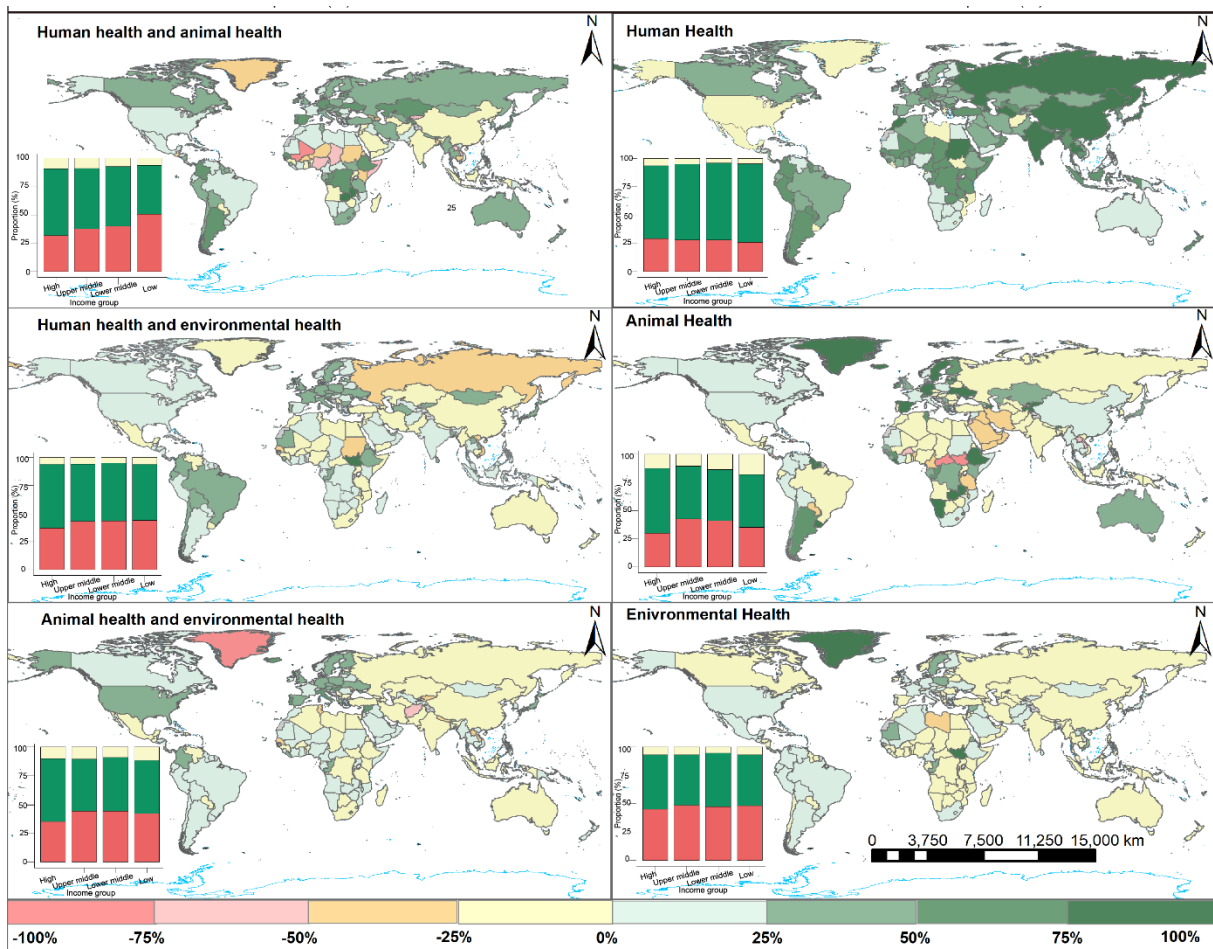


Figure S3. Differences in the proportion of synergies and trade-offs between and within human, animal, and environmental health at the national scale, Related to Figure 2.

The bar chart represents the proportion of countries with different income levels in various relationship configurations of three health dimensions, both within and between dimensions. The green colour indicates countries with a higher proportion of synergies than trade-offs, while the orange or red colour indicates the opposite. The darker the colour, the greater the difference.

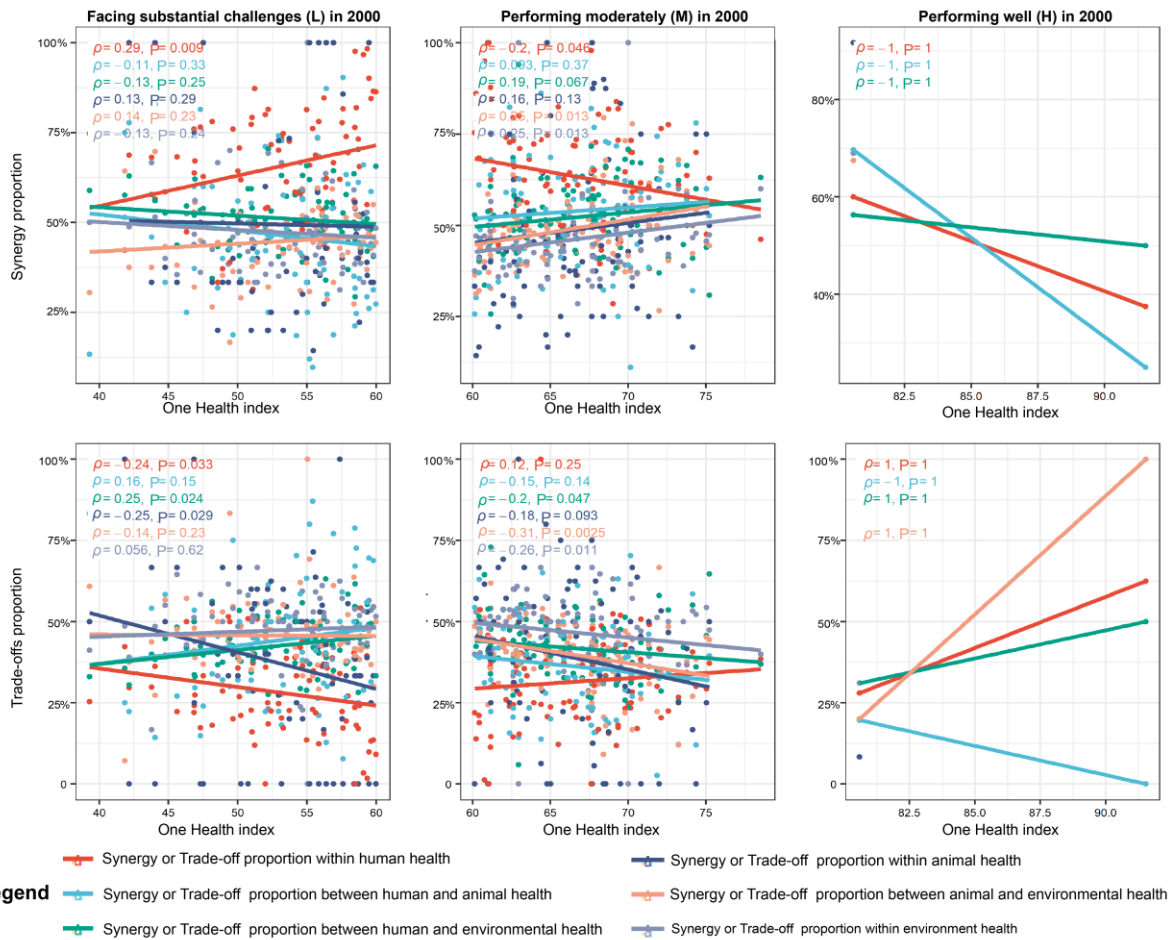


Figure S4. Correlation between the One Health index and the proportions of synergies (S) or trade-offs (T) within and between human, animal, and environmental health in countries worldwide in 2000, respectively, at three levels of the OH index, Related to Figure 3.

The three levels include countries with scores ≥ 80 as performing well (H), those with scores ≤ 60 as facing substantial challenges (L), and those with scores between 60 and 80 as performing moderately (M) on the One Health index.

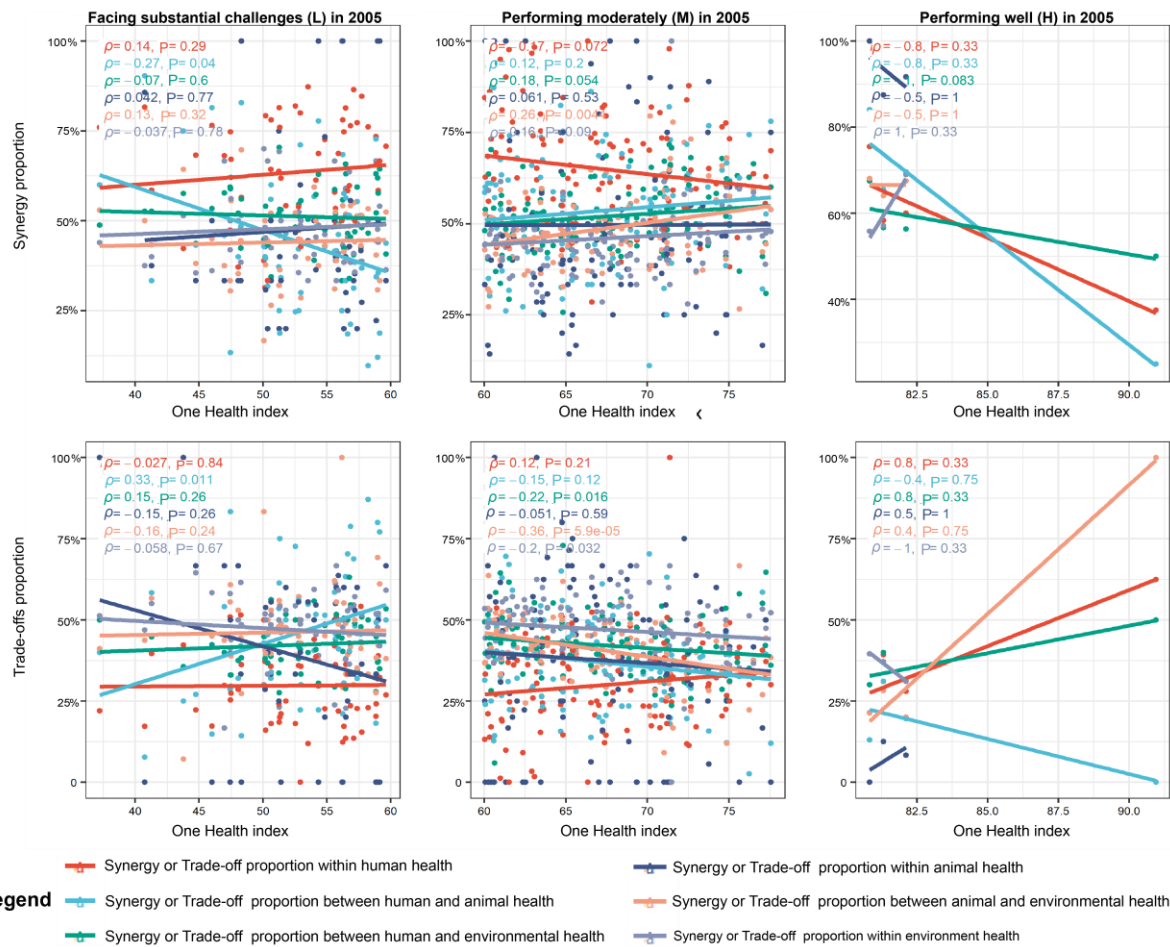


Figure S5. Correlation between the One Health index and the proportions of synergies (S) or trade-offs (T) within and between human, animal, and environmental health in countries worldwide in 2005, respectively, at three levels of the OH index, Related to Figure 3.

The three levels include countries with scores ≥ 80 as performing well (H), those with scores ≤ 60 as facing substantial challenges (L), and those with scores between 60 and 80 as performing moderately (M) on the One Health index.

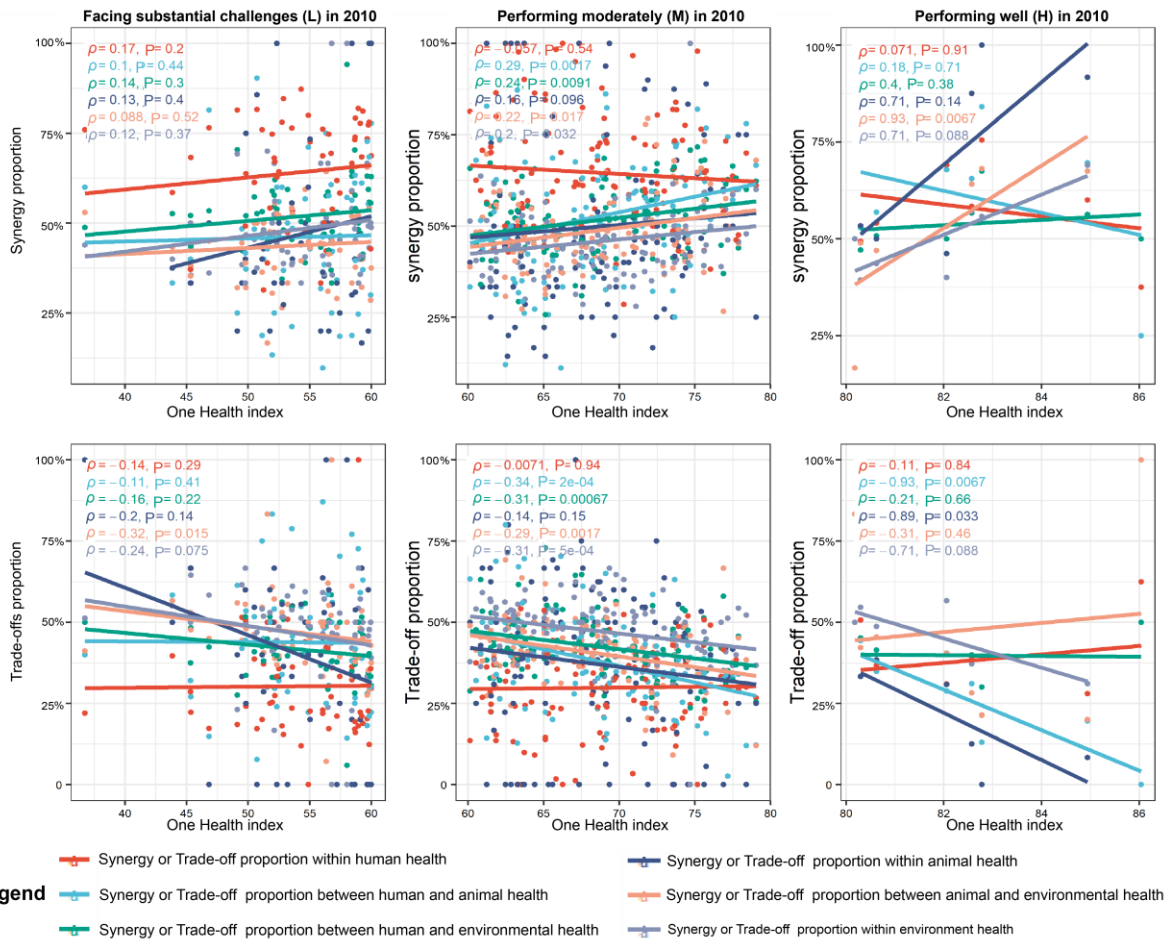


Figure S6. Correlation between the One Health index and the proportions of synergies (S) or trade-offs (T) within and between human, animal, and environmental health in countries worldwide in 2010, respectively, at three levels of the OH index, Related to Figure 3.

The three levels include countries with scores ≥ 80 as performing well (H), those with scores ≤ 60 as facing substantial challenges (L), and those with scores between 60 and 80 as performing moderately (M) on the OH index.

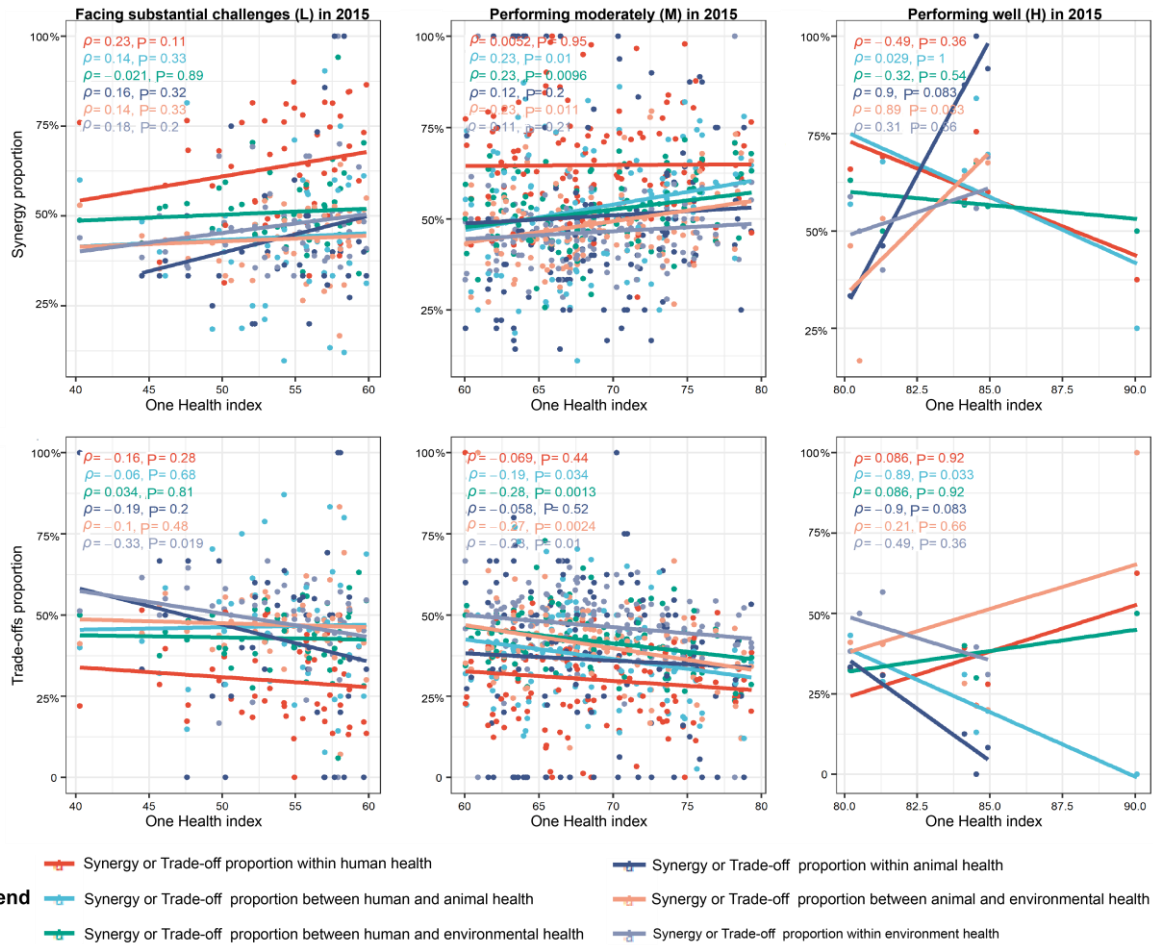


Figure S7. Correlation between the One Health (OH) index and the proportions of synergies (S) or trade-offs (T) within and between human, animal, and environmental health in countries worldwide in 2015, respectively, at three levels of the OH index, Related to Figure 3.

The three levels include countries with scores ≥ 80 as performing well (H), those with scores ≤ 60 as facing substantial challenges (L), and those with scores between 60 and 80 as performing moderately (M) on the OH index.

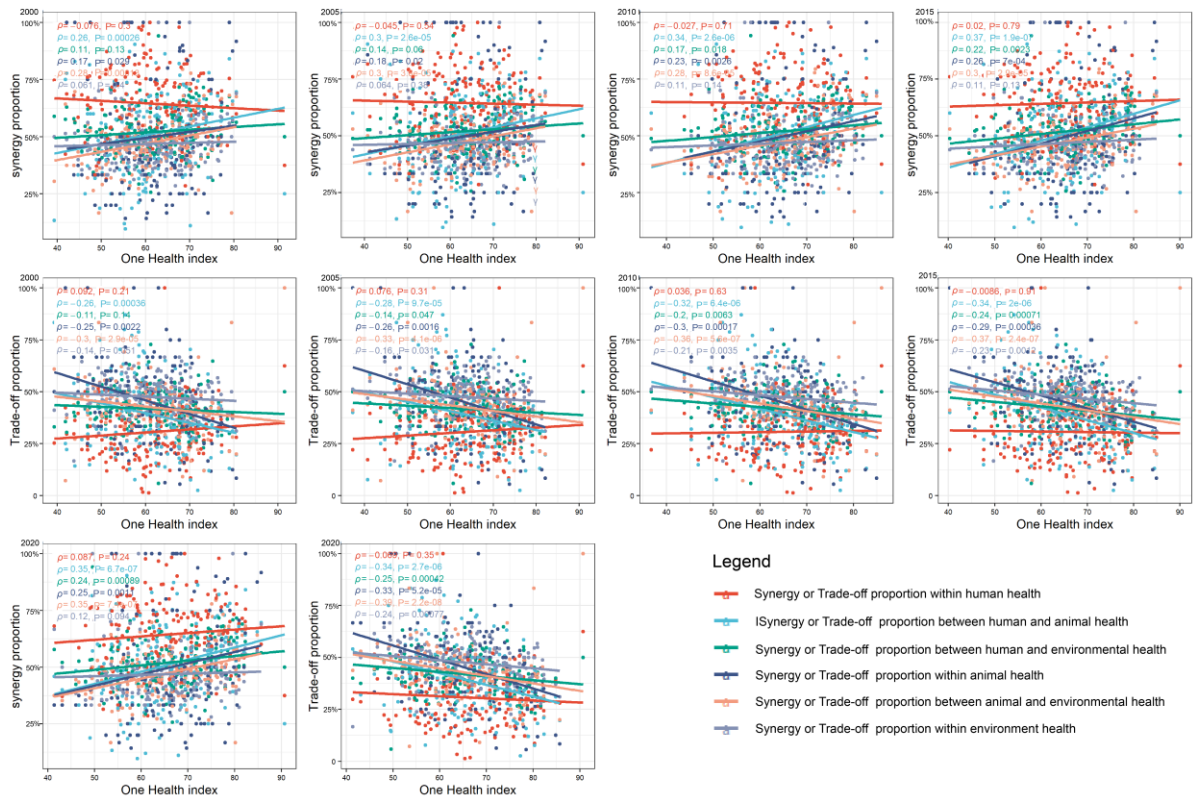


Figure S8. Correlation between the One Health index and the proportions of synergies (S) or trade-offs (T) within and between human, animal, and environmental health in countries around the world from 2000 to 2020, Related to Figure 3.

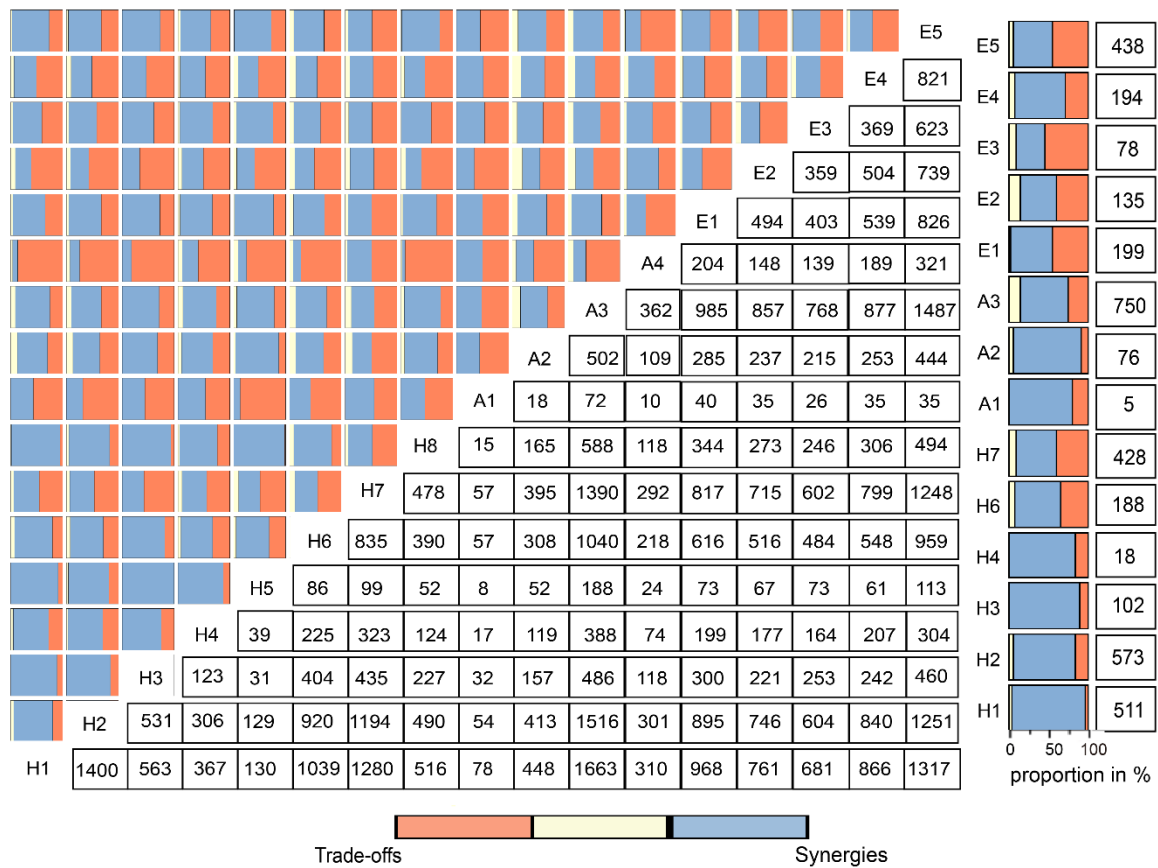


Figure S9. Detected the proportion of synergies and trade-offs between different One Health targets and within the same OH target, from 2000 to 2020, Related to Figure 4.

The OH targets with only one indicator or those that did not pass significance tests are not displayed ($P > 0.05$). The colour bars represent relationships between One Health indicators: synergies, non-classified, and trade-offs. The number in the boxes represents the number of data pairs used for the analysis.

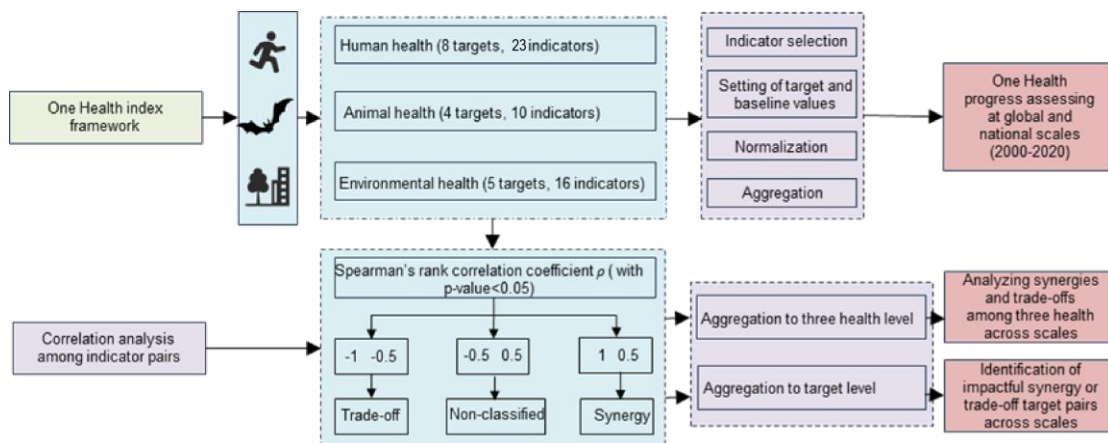


Figure S10. Flowchart for One Health assessment and evaluation of synergies and trade-offs among human, animal, and environmental health on global and national scales, Related to STAR Methods.