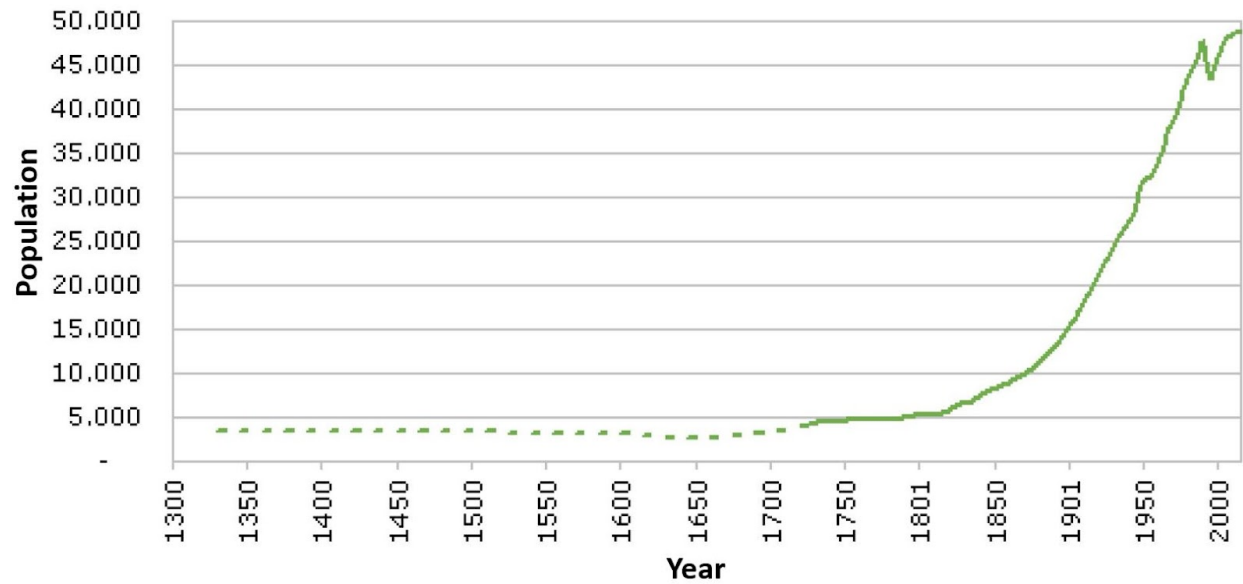


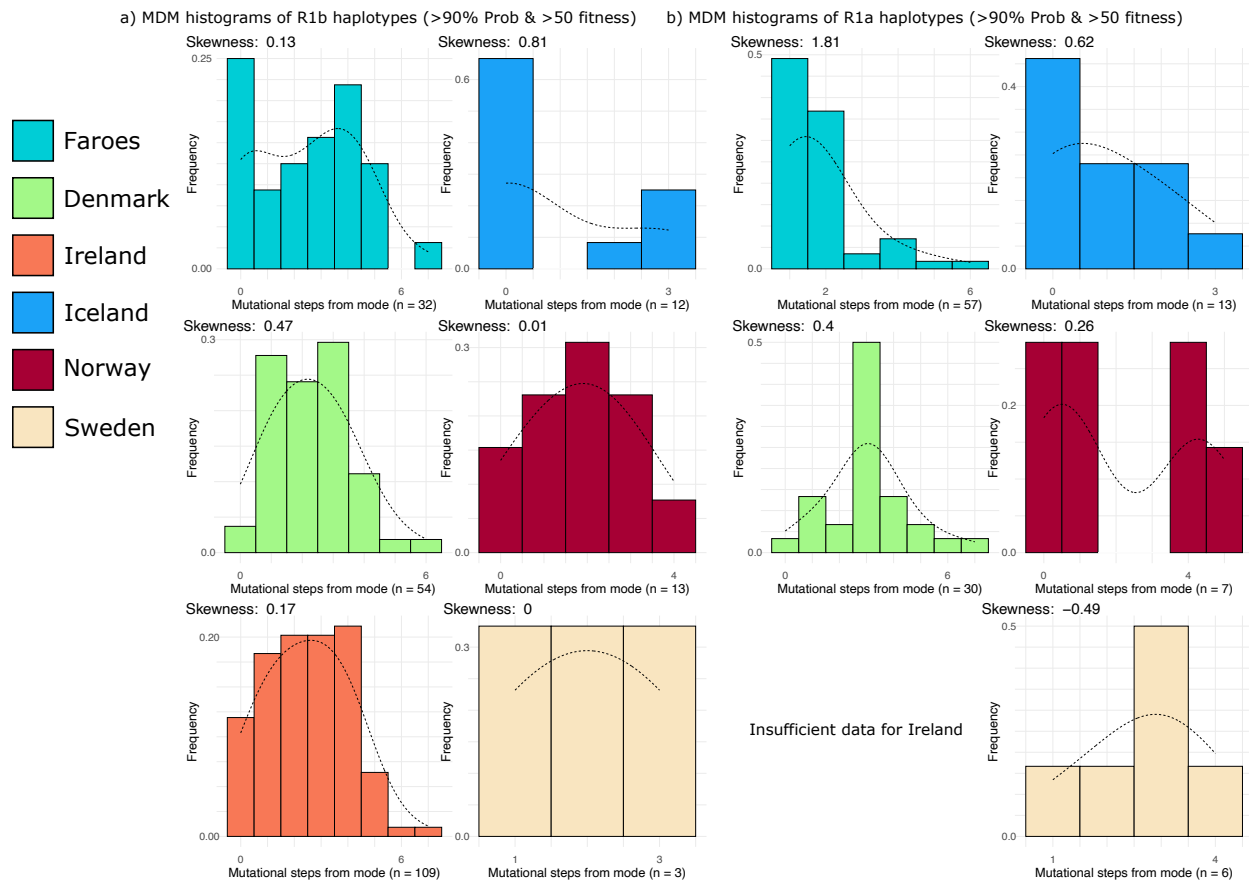
Early founder effects have determined paternal population structure in the Faroe Islands

Allison E. Mann, Eyðfinn Magnussen, Christopher R. Tillquist

Supplementary Figures

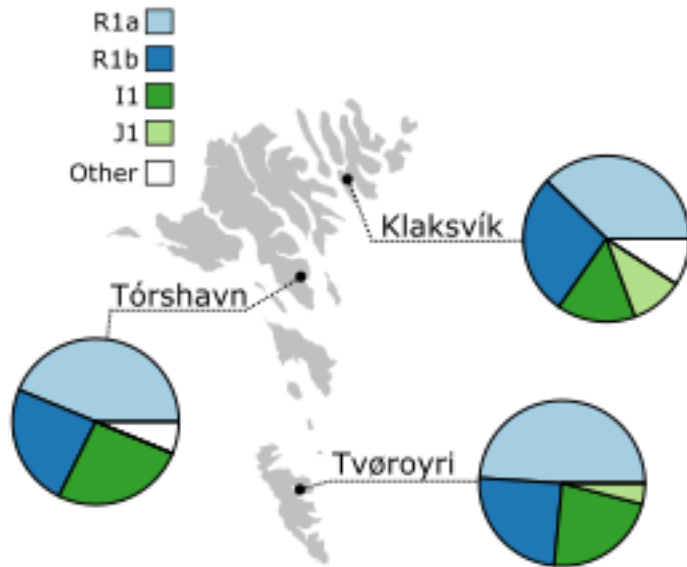


Supplementary Figure 1: Population growth of the Faroese human population during 700 years, from 1330 to 2015. Data from Strøm 2017.



Supplementary Figure 2: MDM histograms using strict haplogroup prediction. a)

Population specific MDM histograms of haplotypes assigned to haplogroup R1b that passed strict haplogroup assignment (Probability > 90%, Fitness score > 50). b) Population specific MDM histograms of haplotypes assigned to haplogroup R1a that passed strict haplogroup assignment (Probability > 90%, Fitness score > 50).



Supplementary Figure 3: Haplogroup frequency by location in the Faroes. Haplogroups with less than 10% total frequency at any location collapsed into “other”.