

Inpatient ABI Rehab Intake Process

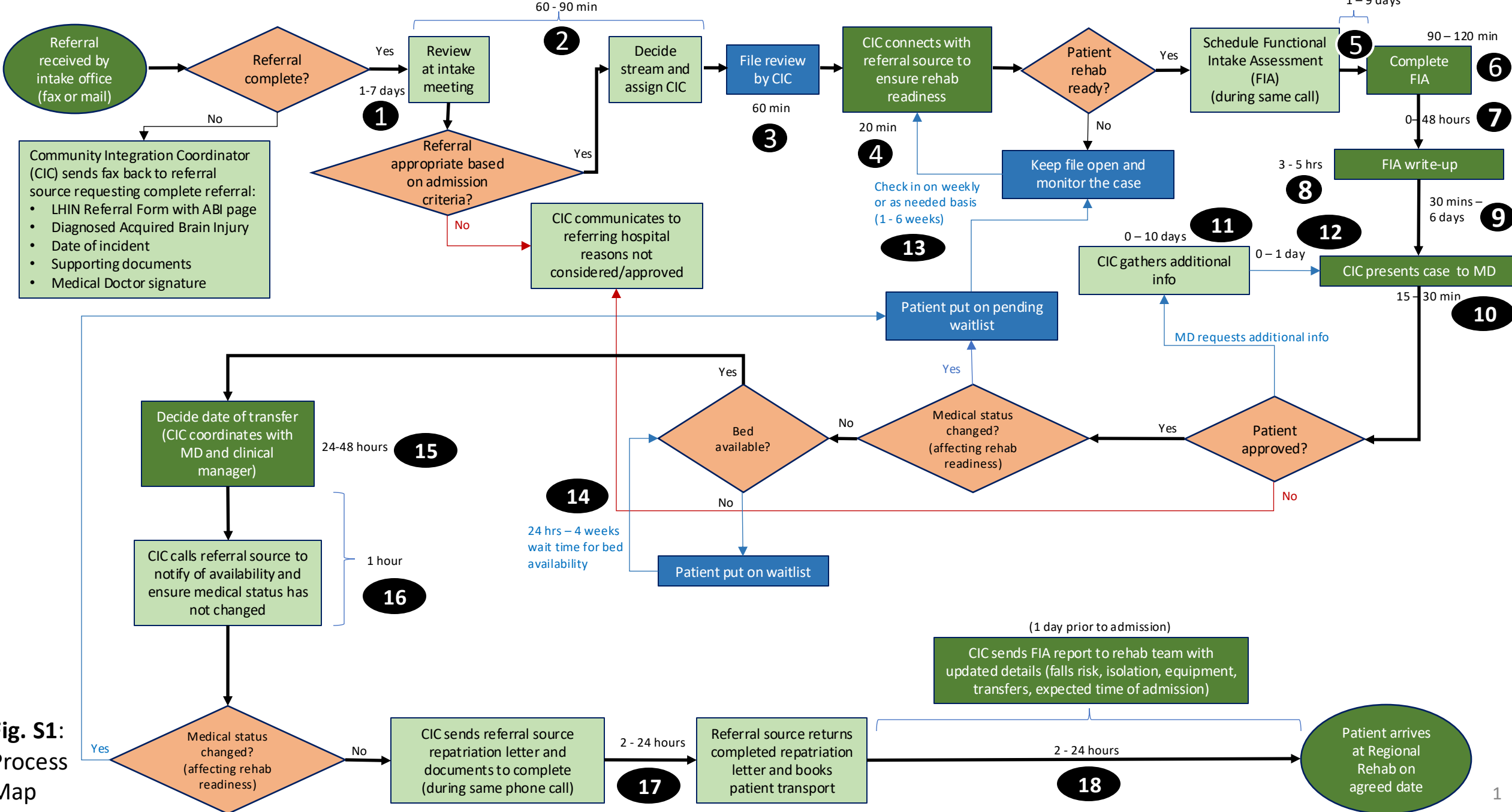
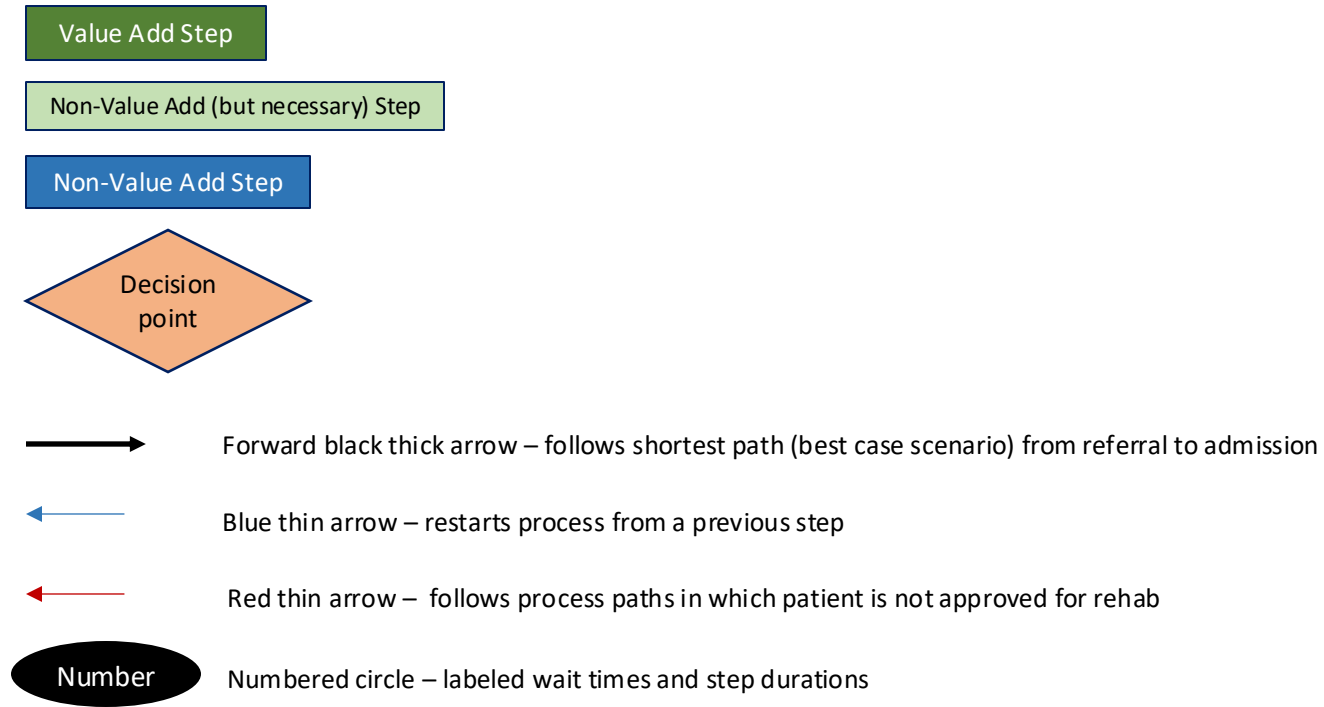


Fig. S1:
Process
Map

Legend for Figure S1 (ABI Intake Process Map)



Please note: decision points and steps not labeled with a duration occur immediately after the previous step

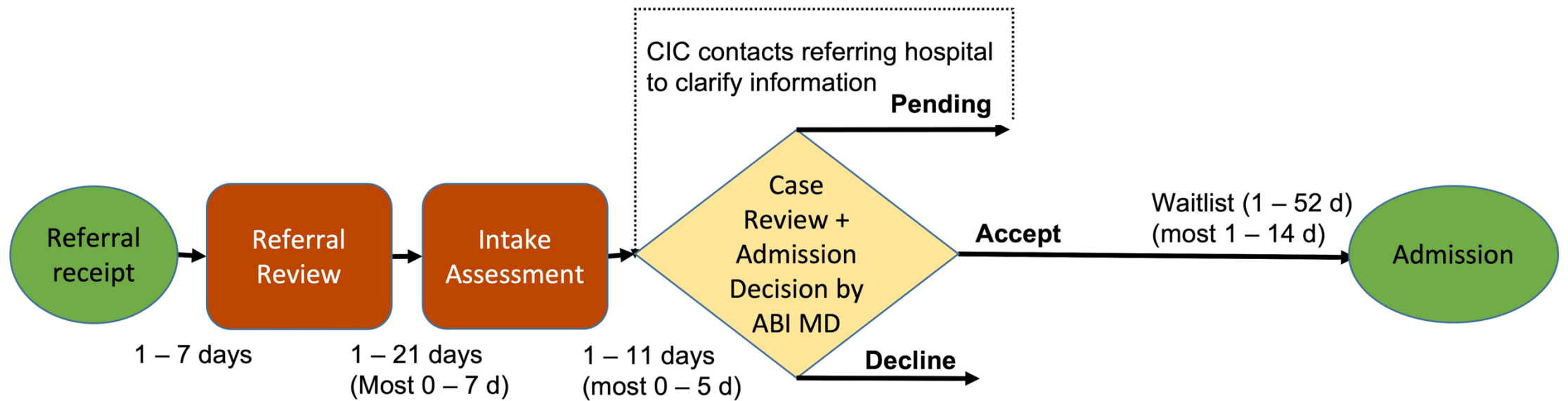


Figure S2: Simplified diagram of ABI referral and intake process.

CIC = Community Intervention Coordinator (intake coordinator); MD = physician; d = days

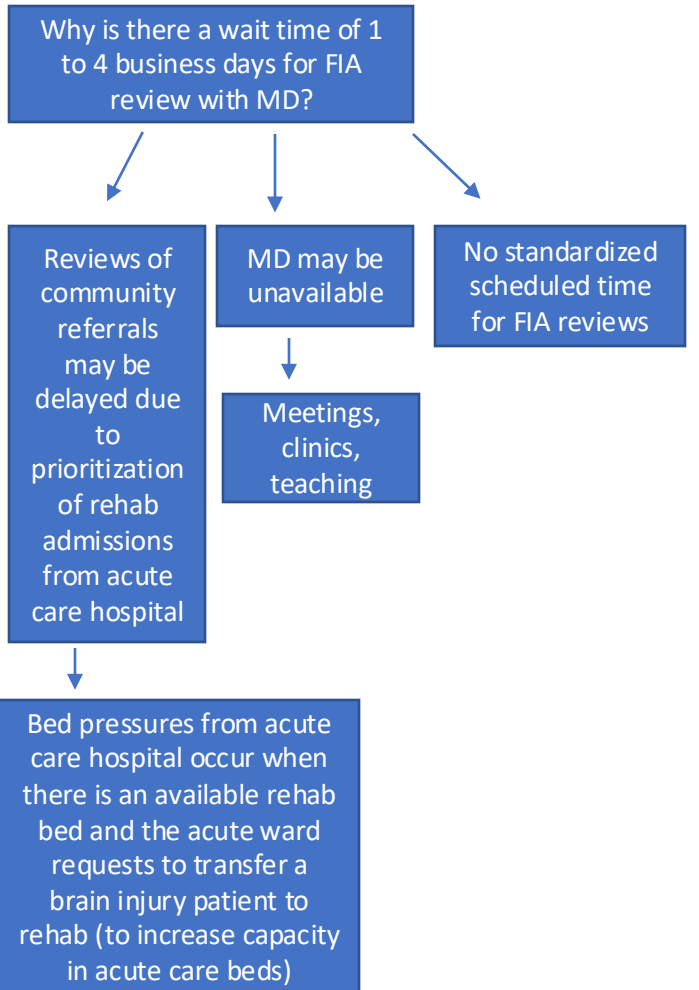
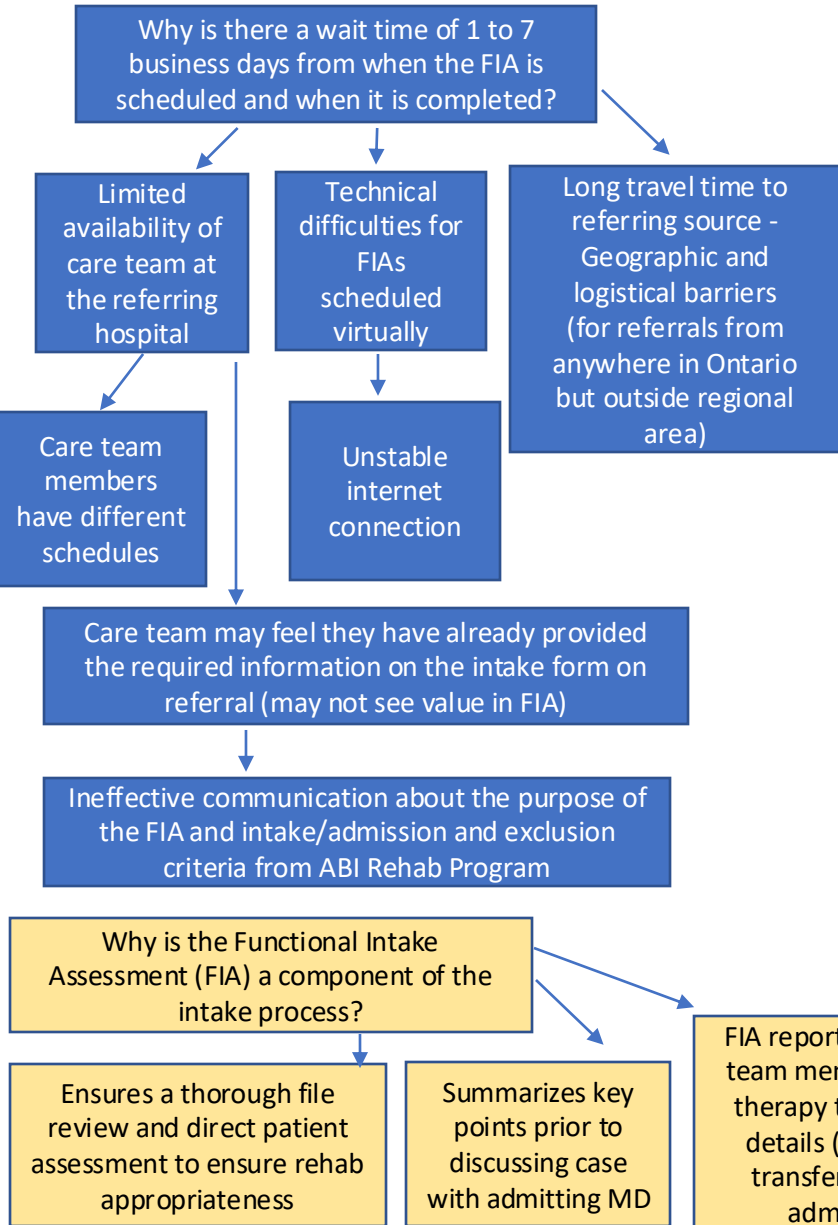
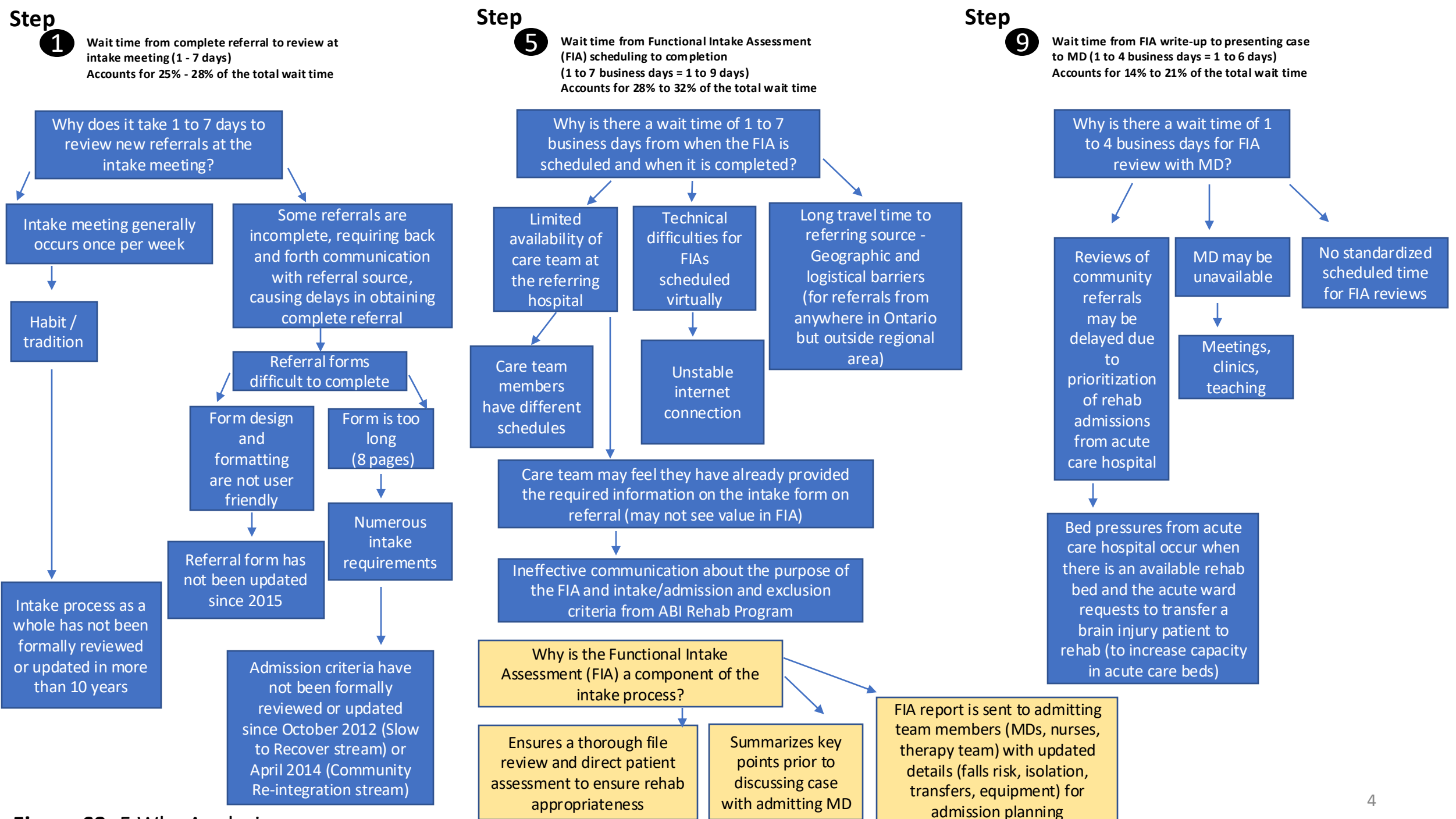


Figure S3: 5 Why Analysis