



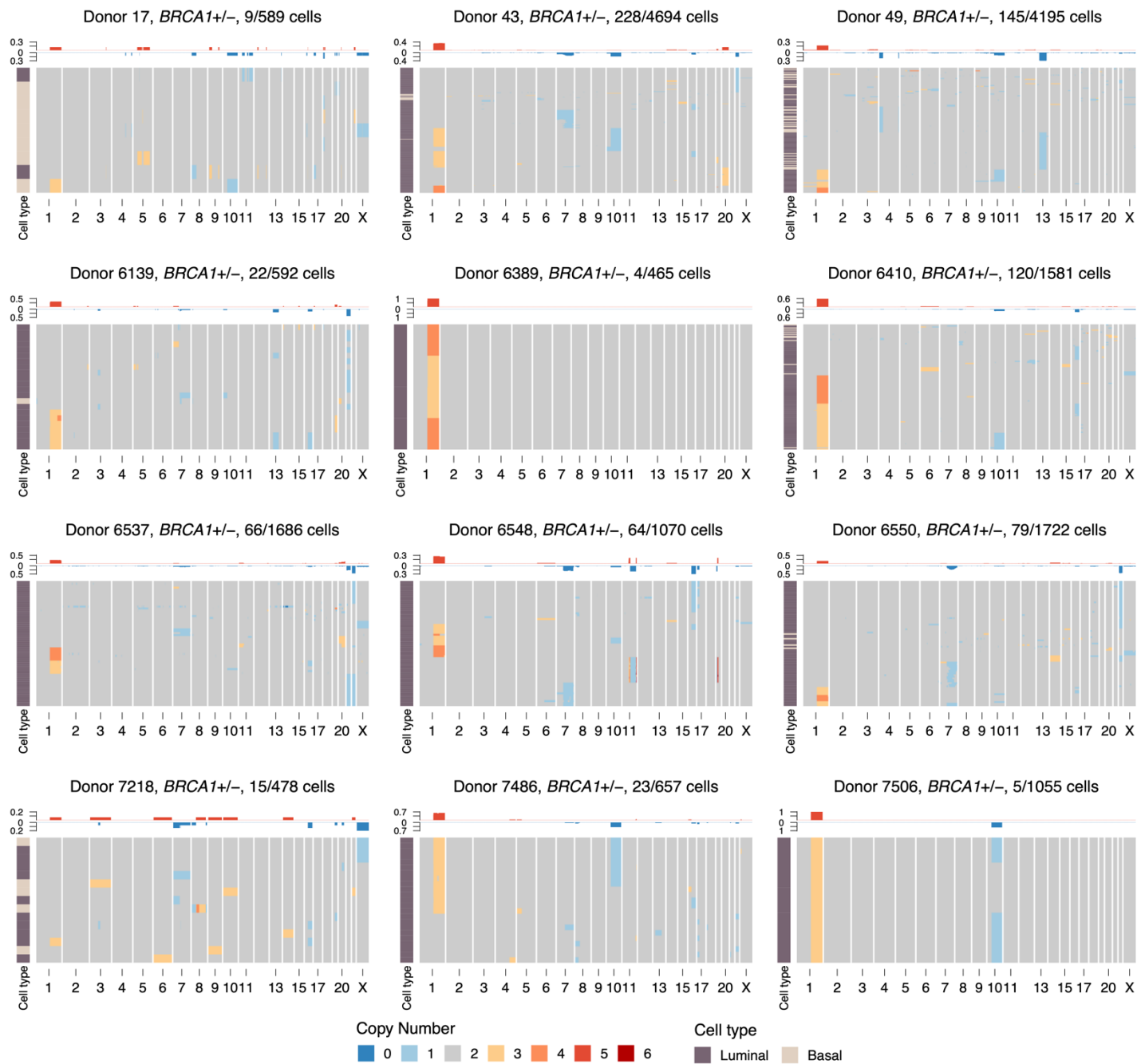
---

# **Luminal breast epithelial cells of *BRCA1* or *BRCA2* mutation carriers and noncarriers harbor common breast cancer copy number alterations**

---

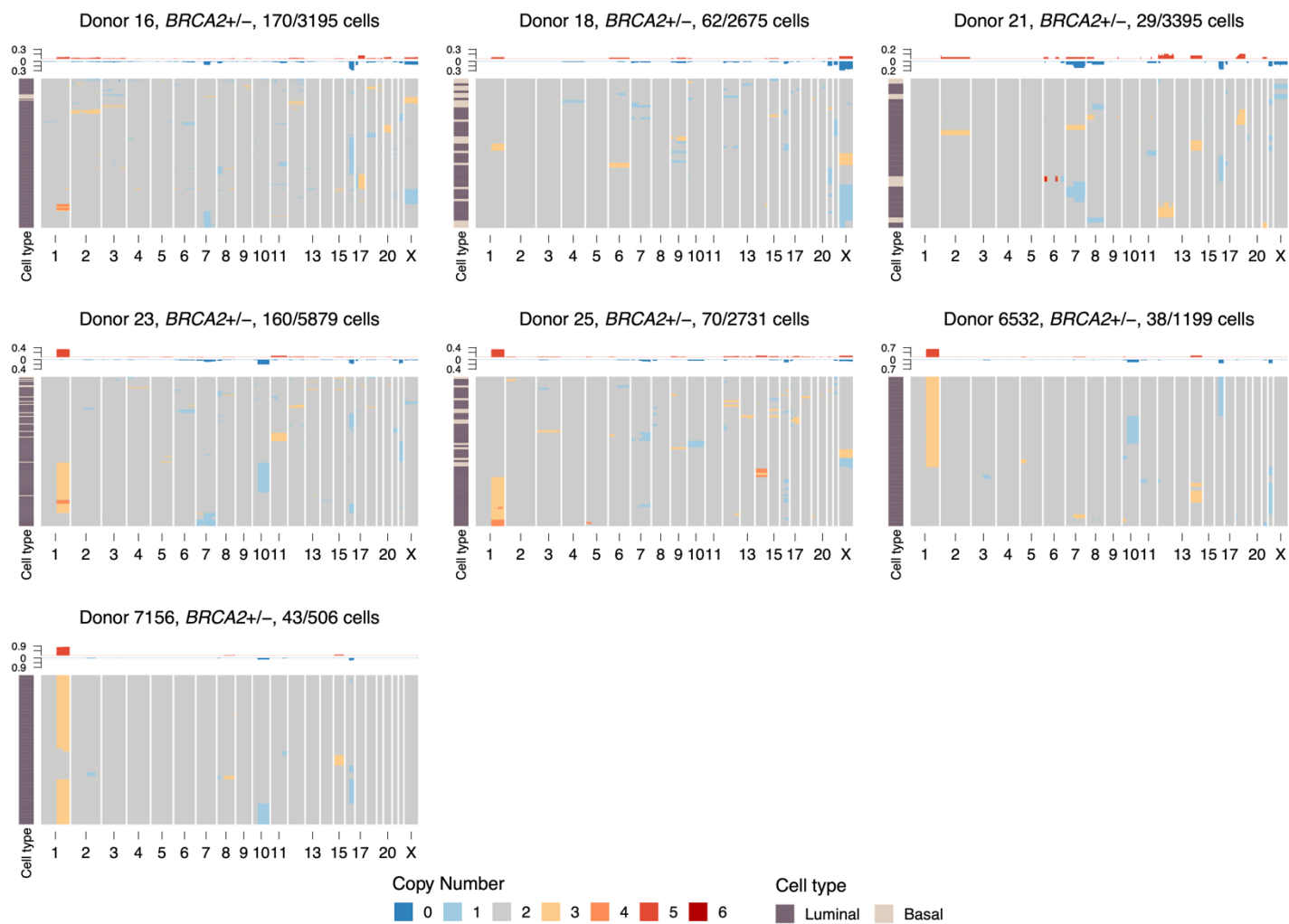
In the format provided by the authors and unedited

---



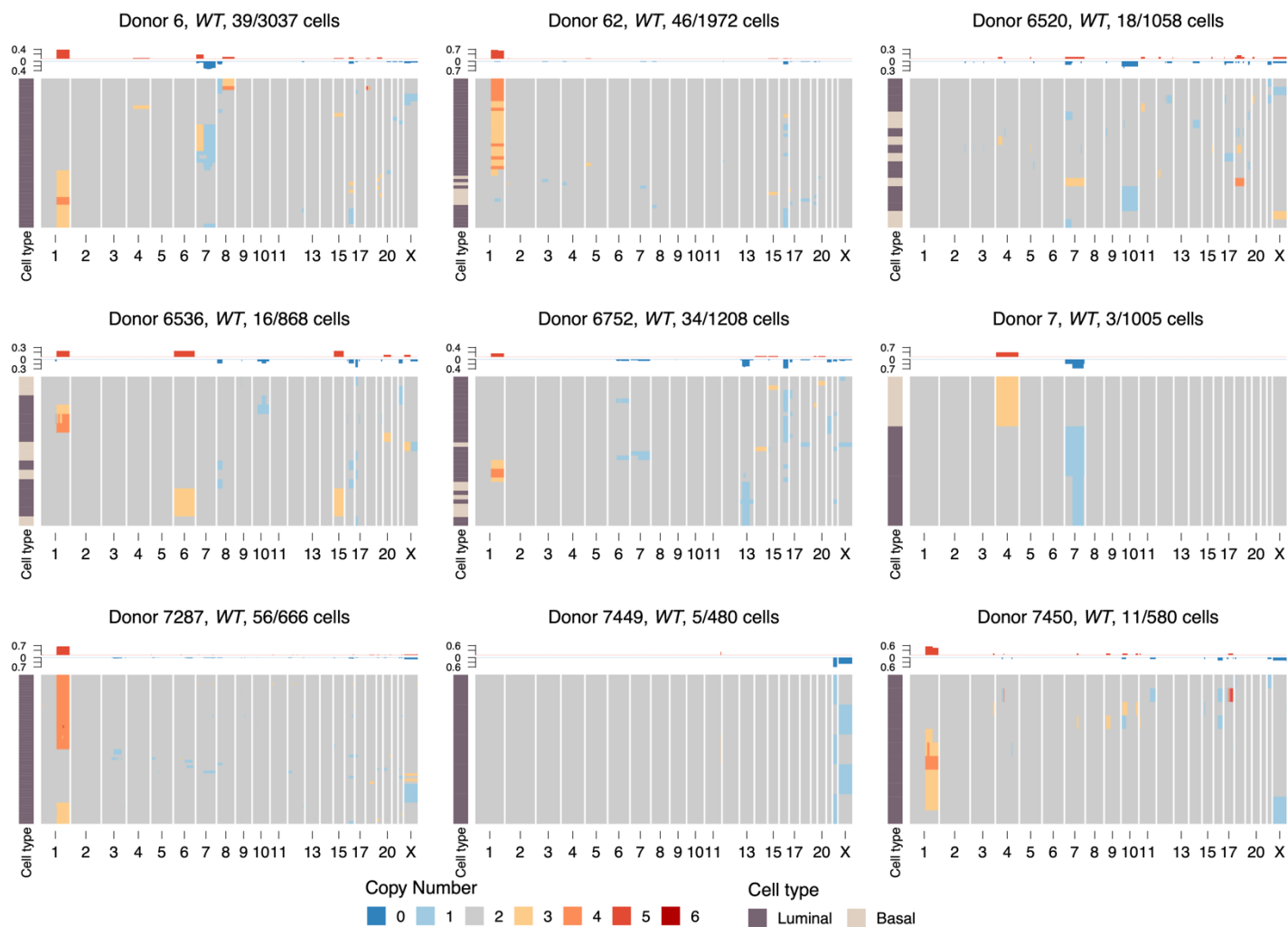
### Supplementary Figure 1 Heatmaps for all *BRCA1*<sup>+/-</sup> donors

Heatmap of aneuploid cells from *BRCA1* donors. Title shows donor name, genotype and number of aneuploid cells out of total number of cells. Above each heatmap is the frequency of gains and losses across the genome, left hand side track annotates the two cell types (basal and luminal).



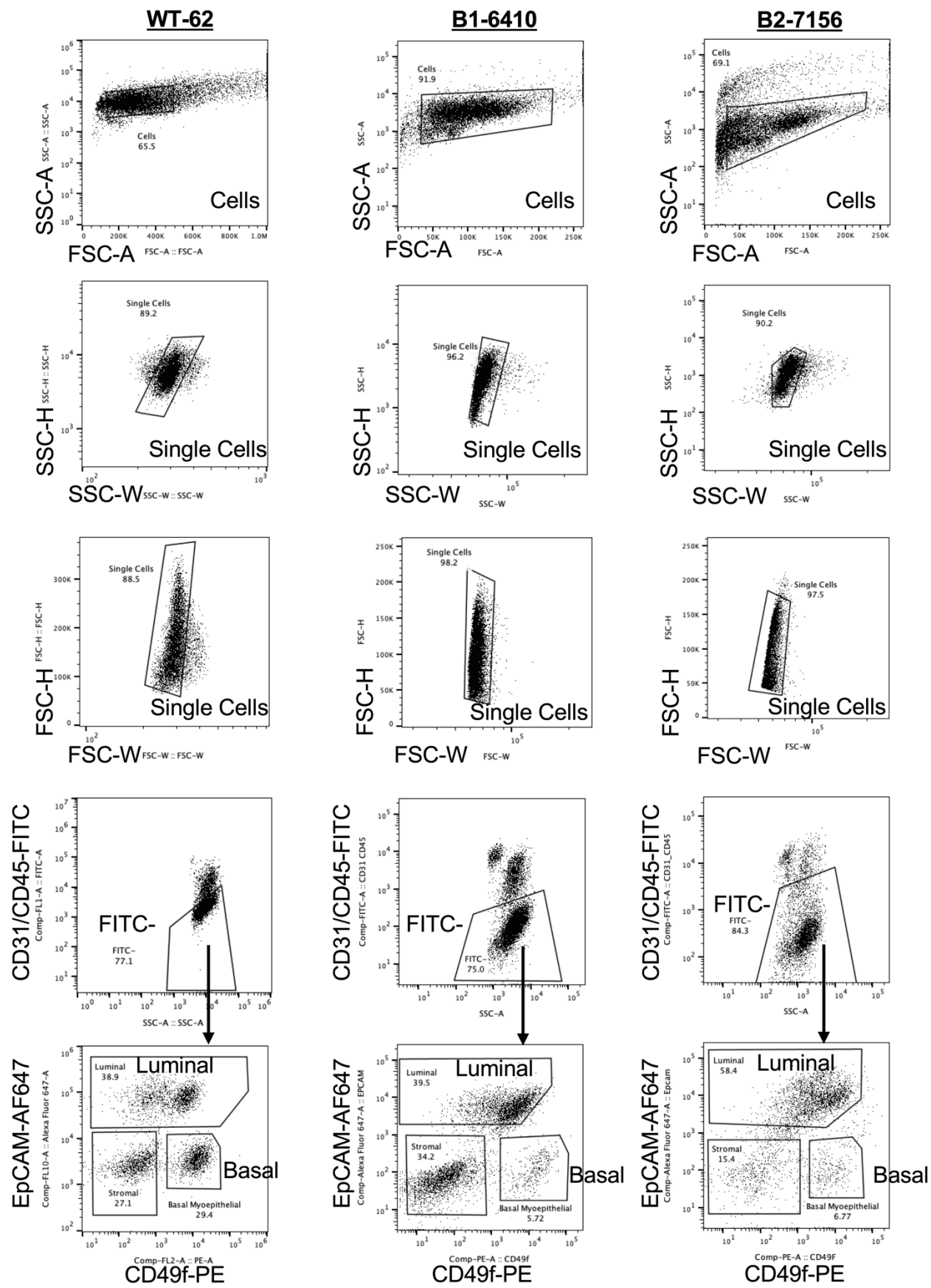
**Supplementary Figure 2 Heatmaps for all *BRCA2*+/- donors**

Heatmap of aneuploid cells from *BRCA2* donors. Title shows donor name, genotype and number of aneuploid cells out of total number of cells. Above each heatmap is the frequency of gains and losses across the genome, left hand side track annotates the two cell types (basal and luminal).



**Supplementary Figure 3 Heatmaps for all WT donors**

Heatmap of aneuploid cells from WT donors. Title shows donor name, genotype and number of aneuploid cells out of total number of cells. Above each heatmap is the frequency of gains and losses across the genome, left hand side track annotates the two cell types (basal and luminal).



**Supplementary Figure 4**

Gating strategies used for cell sorting. Representative FACS plots of (a) WT-62, (b) B1-6410 and (c) B2-7156 sorting strategy to obtain luminal epithelial cells (CD31<sup>+</sup>CD45<sup>+</sup>EpCAM<sup>+</sup>/CD49f<sup>-</sup> or CD49f<sup>+</sup>) and basal myoepithelial cells (CD31<sup>-</sup>CD45<sup>-</sup>EpCAM<sup>low</sup>/CD49f<sup>+</sup>) for scDNAseq analyses presented in Figs 1, 2, 3 and 4.