

Supplementary Materials for

The adenine nucleotide translocase family underlies cardiac ischemia-reperfusion injury through the mitochondrial permeability pore independently of cyclophilin D

Pooja Patel *et al.*

Corresponding author: Jason Karch, jason.karch@bcm.edu

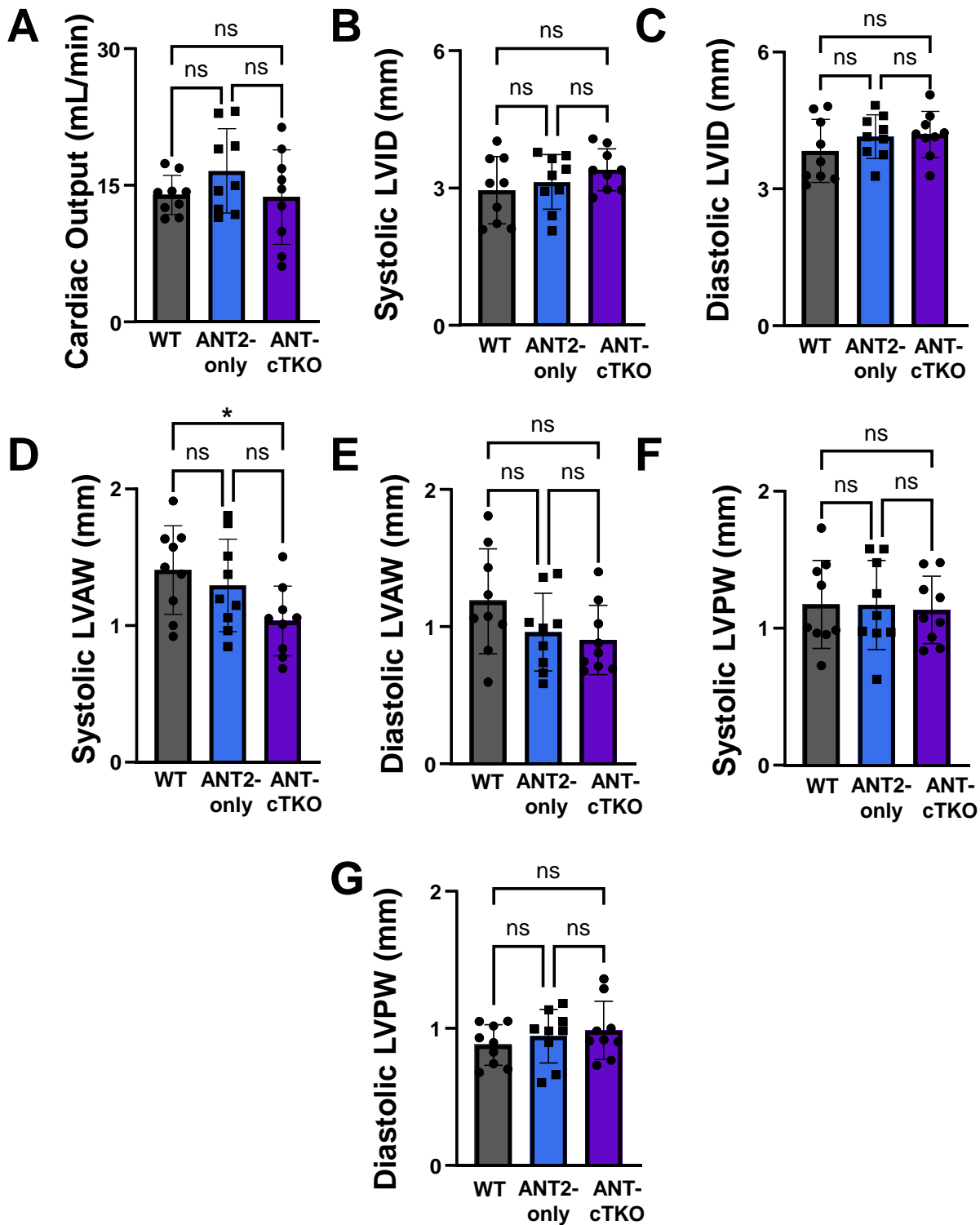
Sci. Adv. **10**, eadp7444 (2024)
DOI: 10.1126/sciadv.adp7444

This PDF file includes:

Figs. S1 to S4

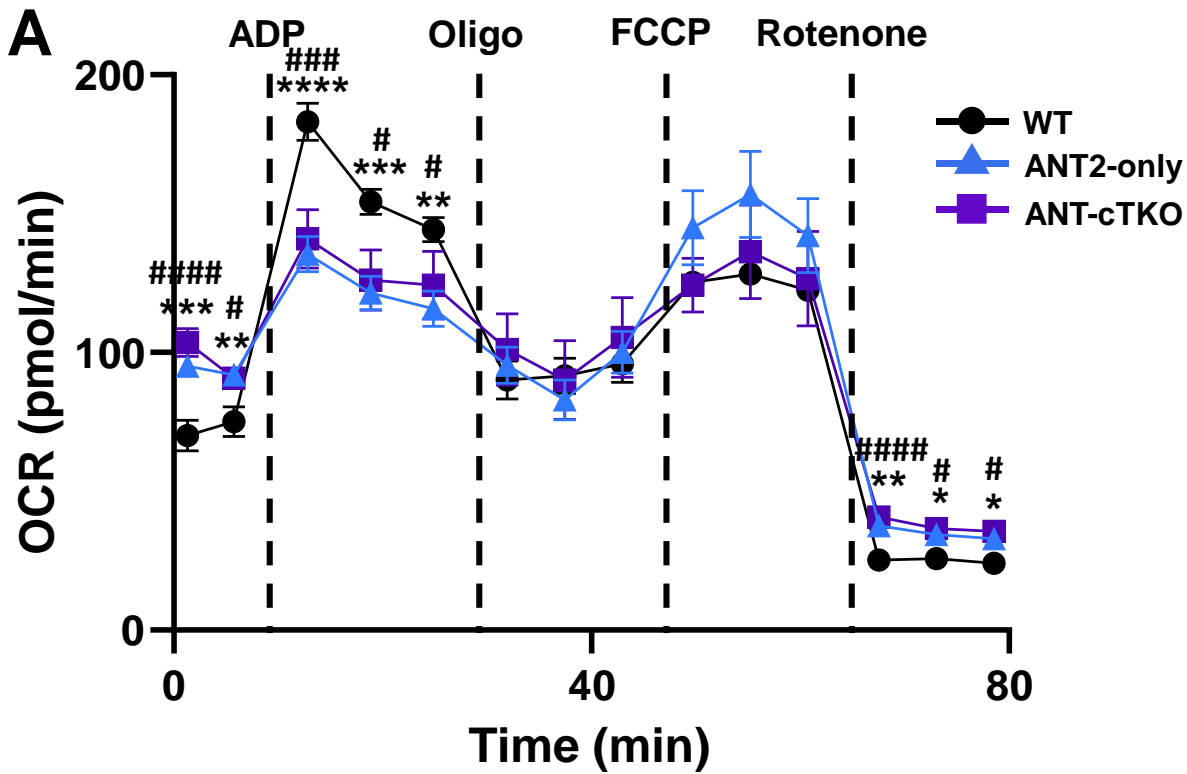
Supplementary Materials

Supplementary Figure 1



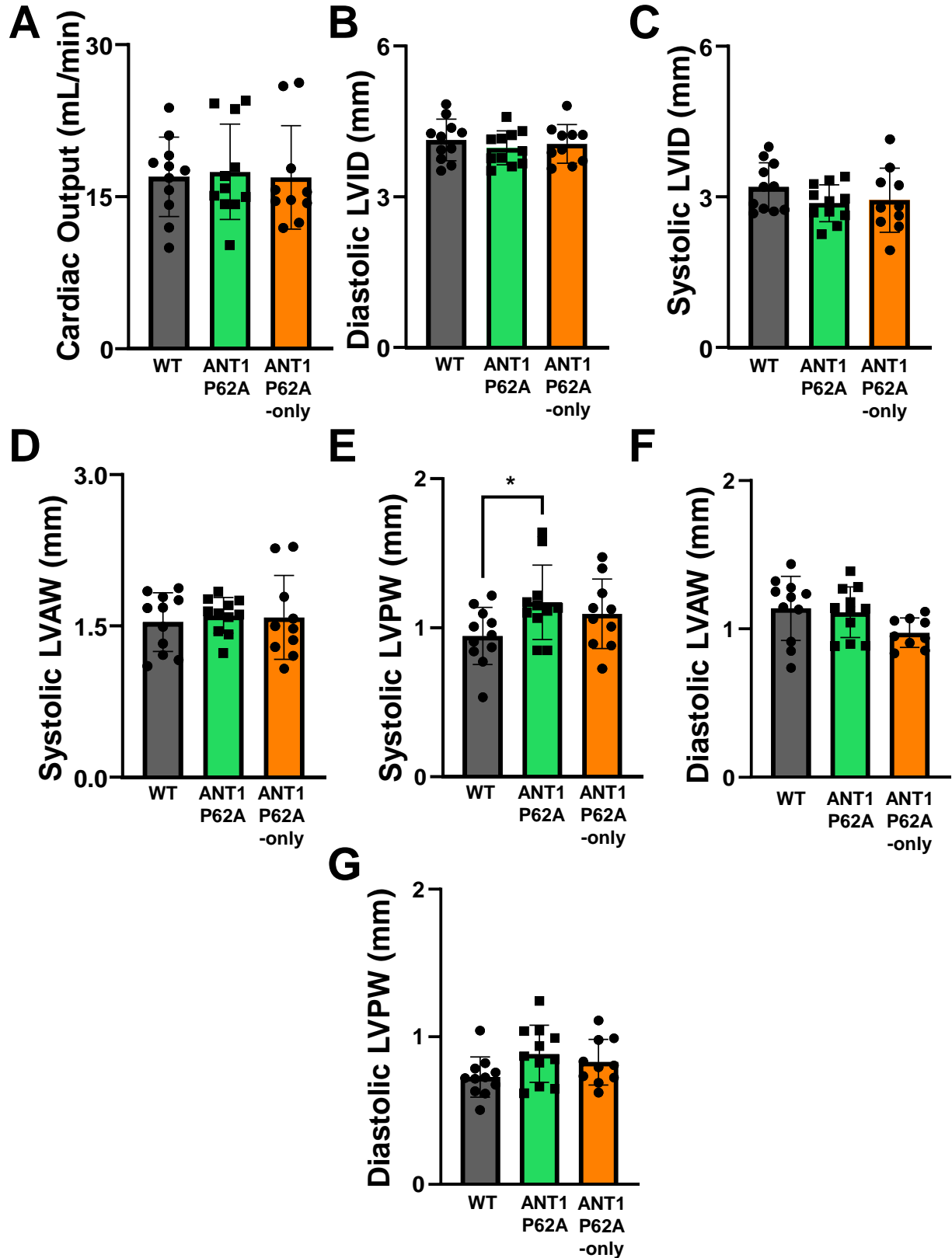
Supplementary Figure 1: ANT-cTKO hearts are similar in function and dimension in comparison to ANT2-only hearts and WT hearts. (A-G) Echocardiographic analysis of WT (grey), ANT2-only (blue) and ANT-cTKO (purple). All mice were 3 months of age.

Supplementary Figure 2



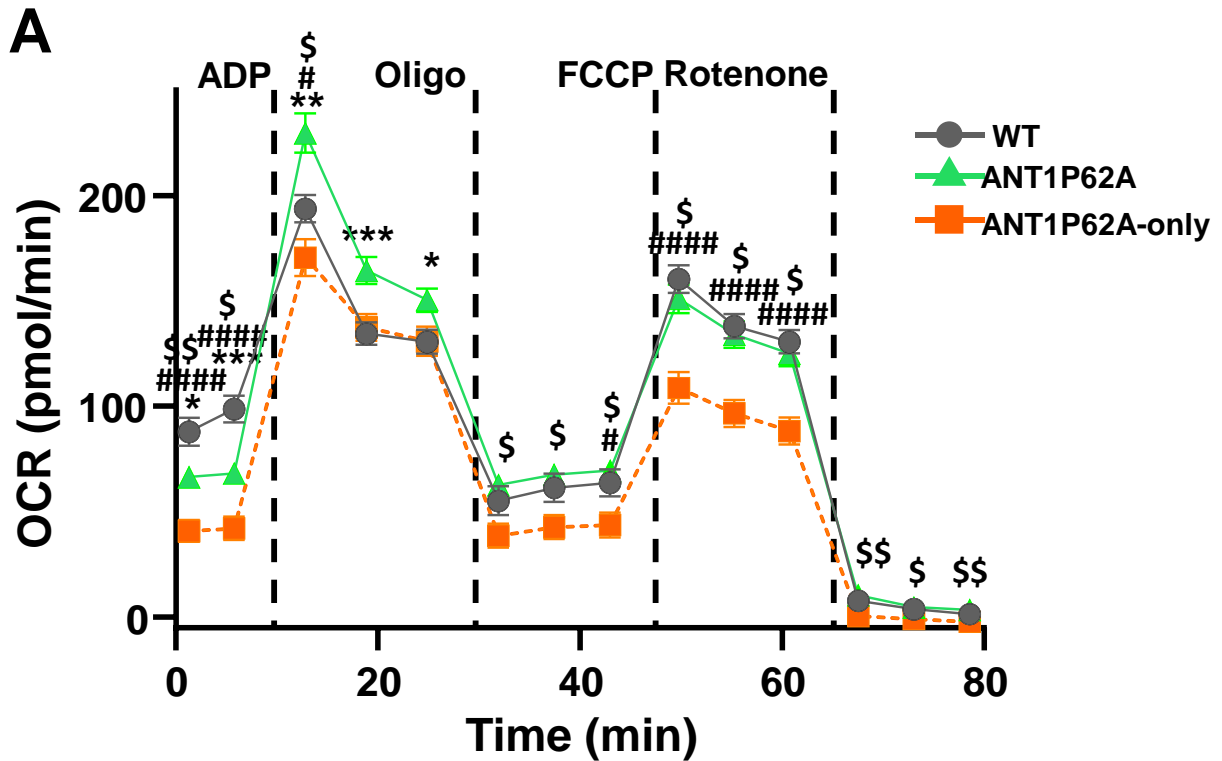
Supplementary Figure 2: ANT-cTKO cardiac mitochondria have decreased response to ADP. (A) Mitochondrial stress test performed on 3.5-month-old WT (black), ANT2-only (blue) and ANT cTKO (purple) heart mitochondria. Oxygen consumption rate (OCR) was measured during sequential treatments of 500 μ M ADP, 10 μ M oligomycin, 5 μ M FCCP, and 1 μ M rotenone. * $p \leq 0.05$, ** $p \leq 0.001$, *** $p \leq 0.0001$, **** $p \leq 0.00001$ comparison between WT and ANT2-only. # $p \leq 0.05$, ### $p \leq 0.0001$, #### $p \leq 0.00001$ comparison between WT and ANT cTKO.

Supplementary Figure 3



Supplemental Figure 3: ANT1P62A expressing hearts and ANT1P62A-only expressing hearts are similar in function and dimension as WT hearts. (A-G) Echocardiographic analysis of 3-month-old WT (dark grey, n=12), ANT1P62A (green, n=12) and ANT1P62A-only mice (orange, n=10). *p<0.05.

Supplementary Figure 4



Supplemental Figure 4: ANT1P62A-only expressing mitochondria have reduced OCR and maximal respiratory capacity. (A) Mitochondrial stress test performed on 3-month-old WT (grey), ANT1P62A (green) and ANT1P62A-only (orange) heart mitochondria. Oxygen consumption rate (OCR) was measured during sequential treatments of 500 μ M ADP, 10 μ M oligomycin, 5 μ M FCCP, and 1 μ M rotenone. * $p \leq 0.05$, ** $p \leq 0.001$, *** $p \leq 0.0001$ comparison between WT and ANT1P62A. # $p \leq 0.05$, #### $p \leq 0.00001$ comparison between WT and ANT1P62A-only. \$ $p \leq 0.05$, \$\$ $p \leq 0.001$ comparison between ANT1P62A and ANT1P62A-only.