

Source Data 1_related to Main Fig.4a

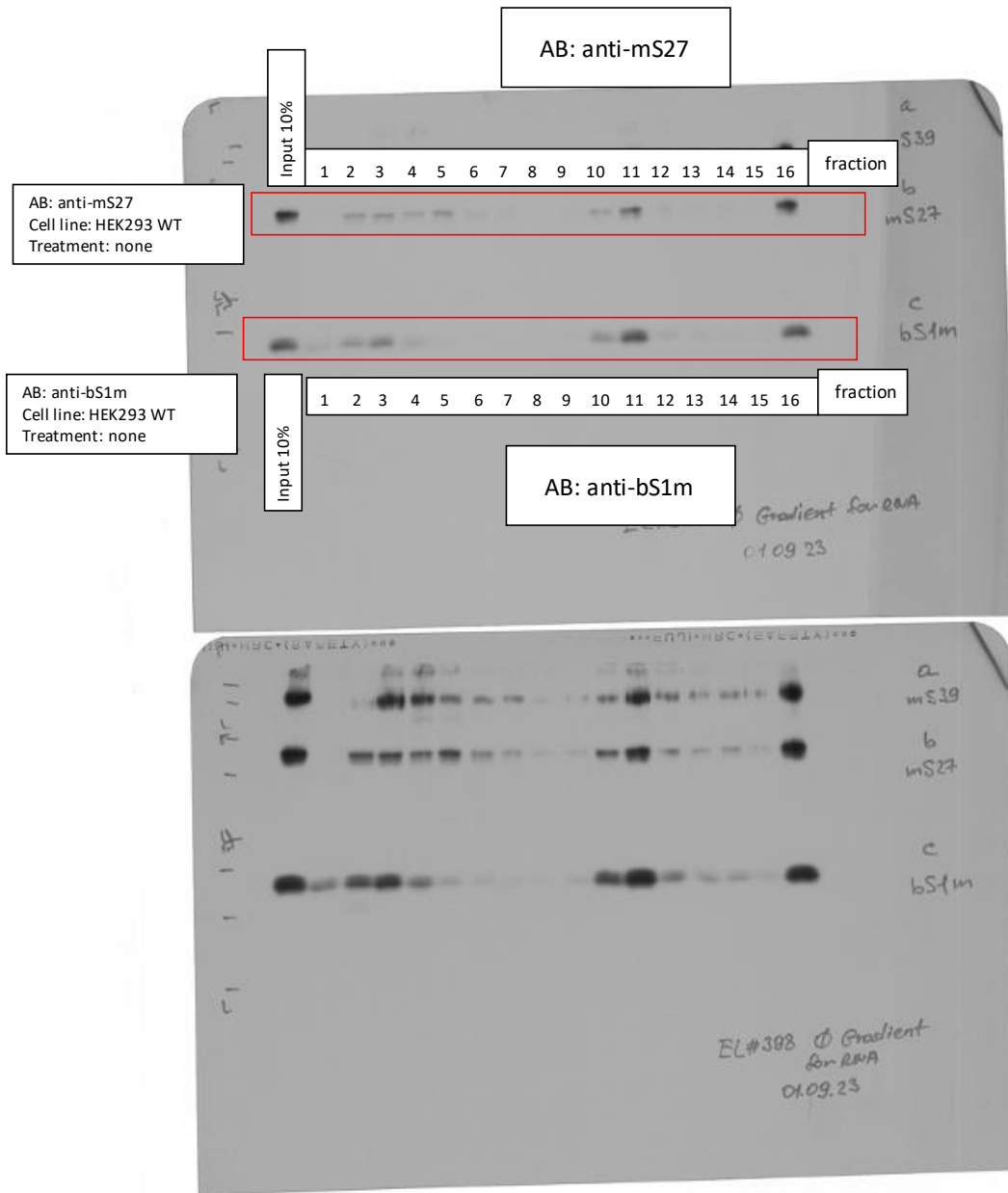
EL#398 WT Gradient + RNA isolation

Rotor: SW41 Ti

Gradient: Sucrose 5-30%

Speed: 158.000xg

Time: 15h



Source Data 1_related to Main Fig.4a

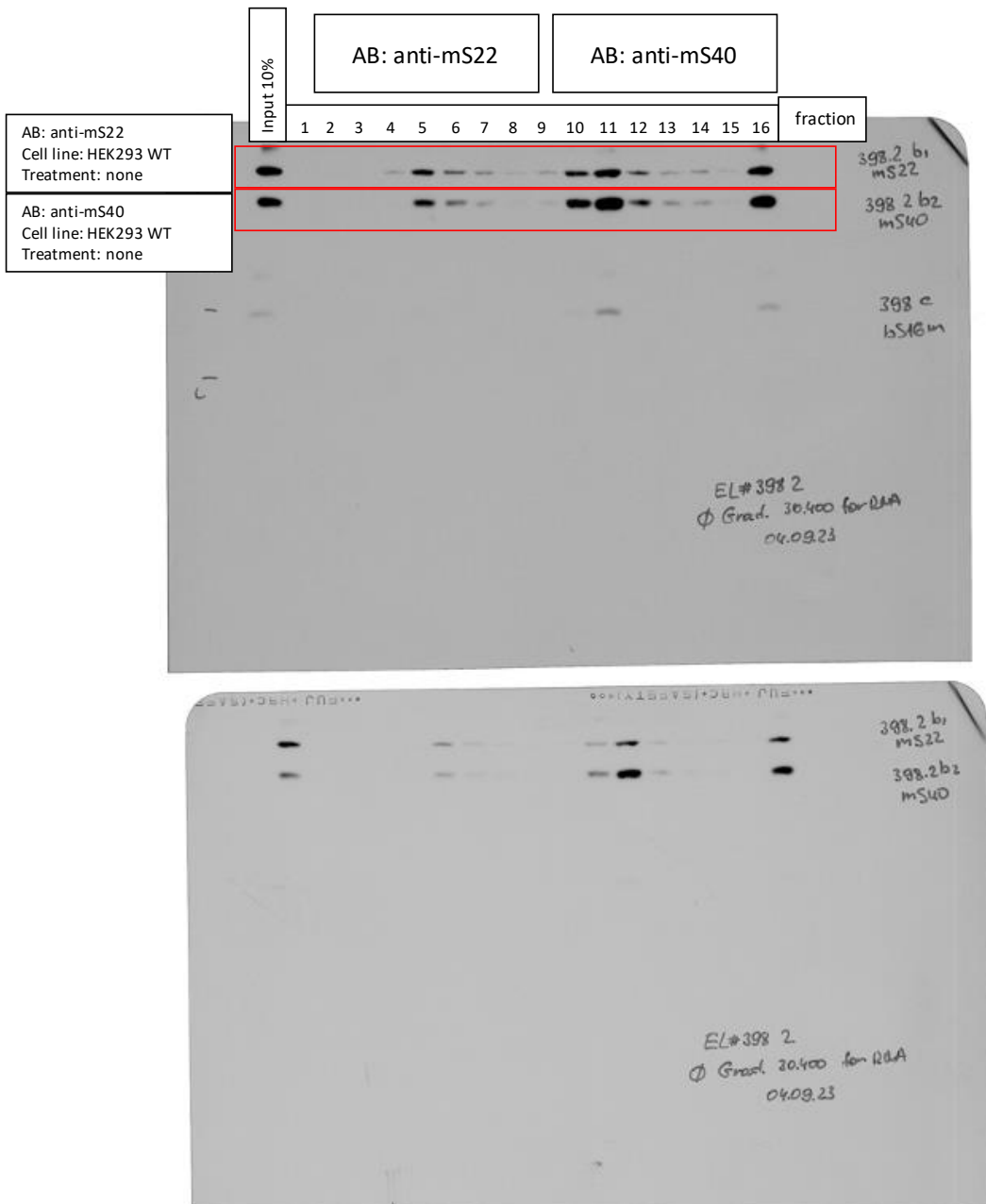
EL#398 WT Gradient + RNA isolation

Rotor: SW41 Ti

Gradient: Sucrose 5-30%

Speed: 158.000xg

Time: 15h



Source Data 1_related to Main Fig.4a

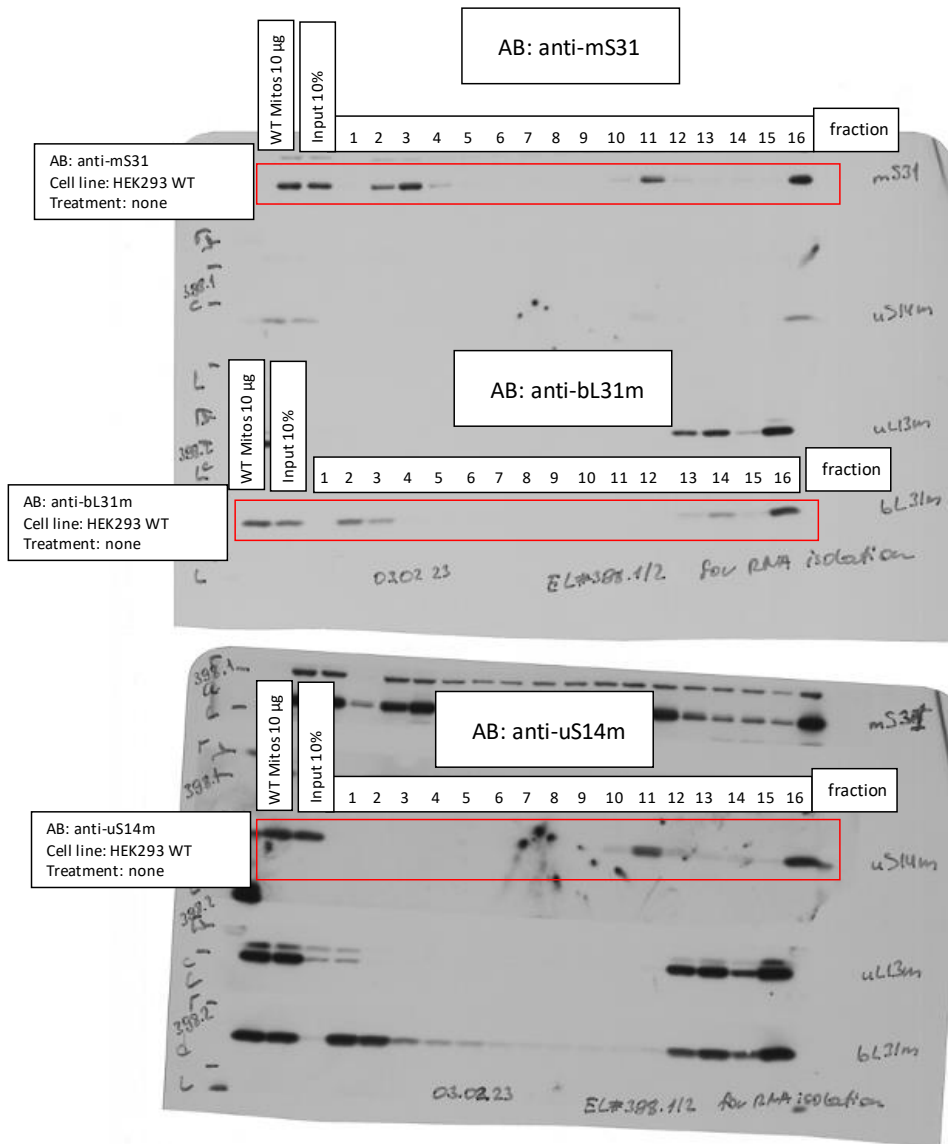
EL#398 WT Gradient + RNA isolation

Rotor: SW41 Ti

Gradient: Sucrose 5-30%

Speed: 158.000xg

Time: 15h



Source Data 1_related to Main Fig.4a

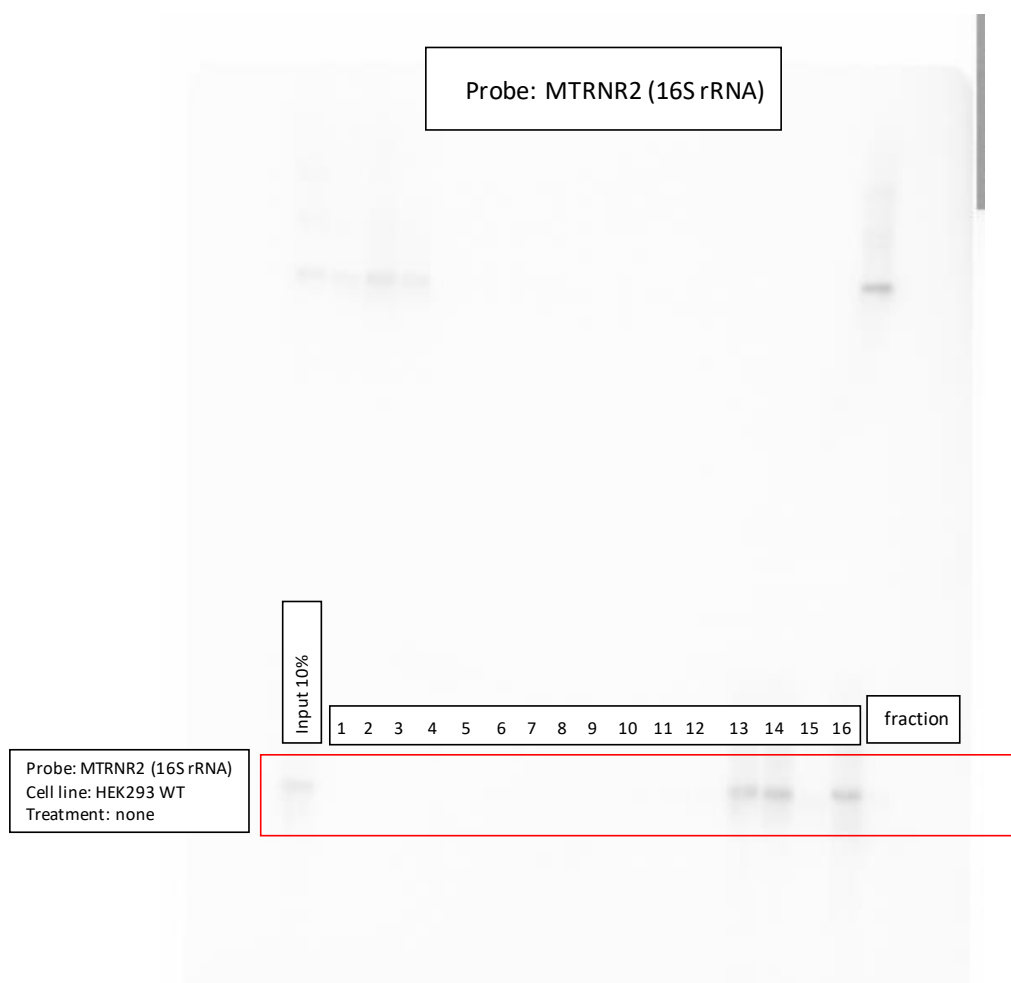
EL#398 WT Gradient + RNA isolation

Rotor: SW41 Ti

Gradient: Sucrose 5-30%

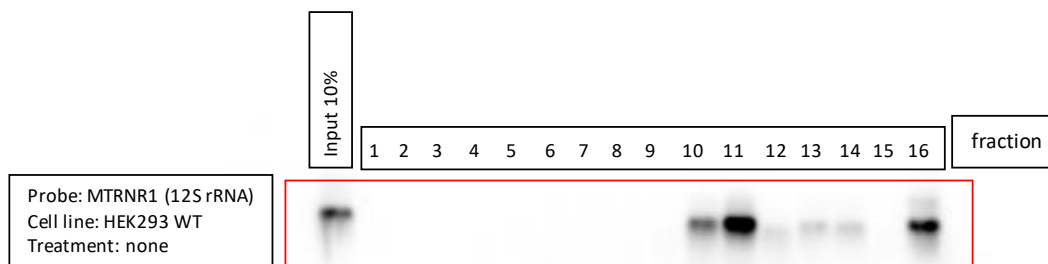
Speed: 158.000xg

Time: 15h



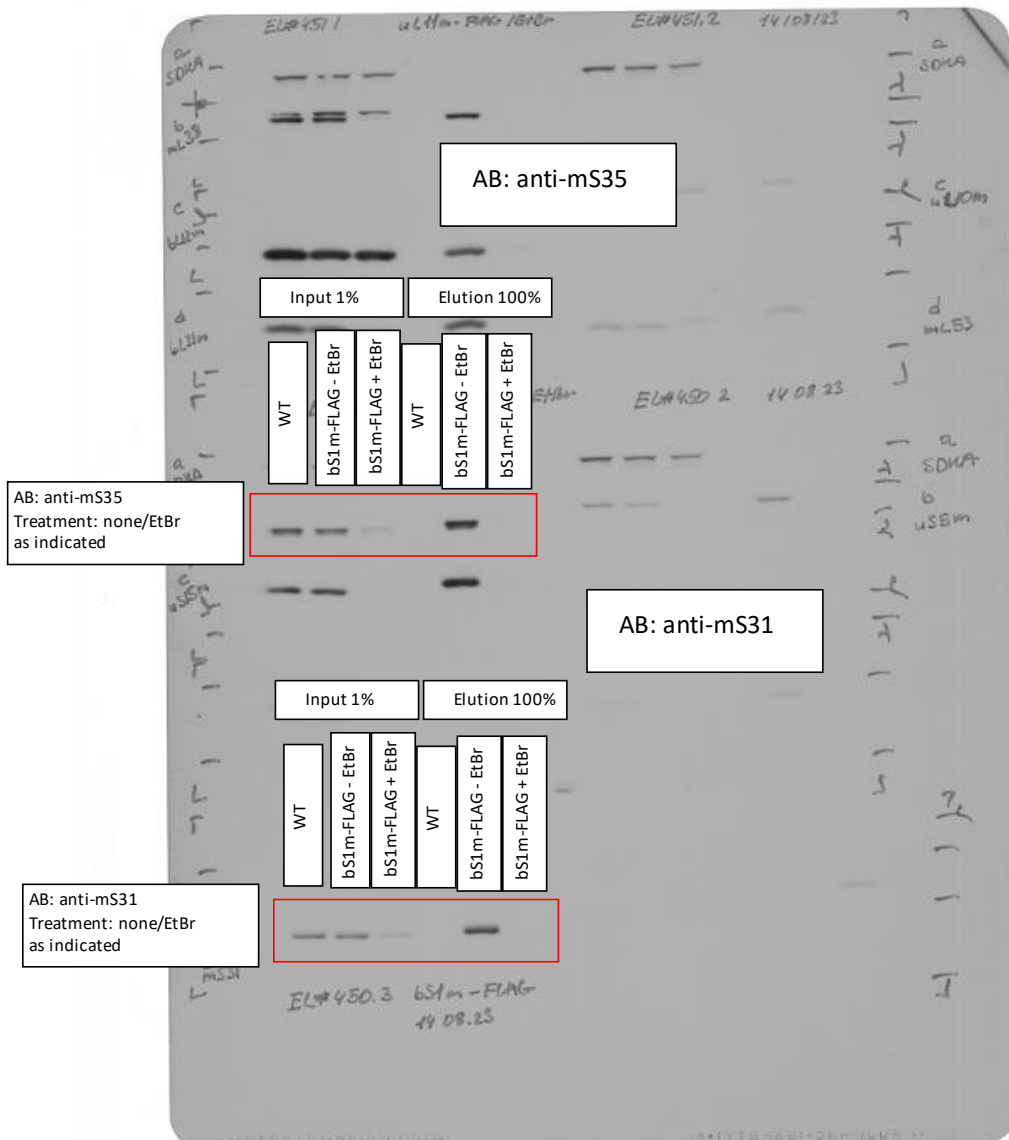
Source Data 1_related to Main Fig.4a
EL#398 WT Gradient + RNA isolation
Rotor: SW41 Ti
Gradient: Sucrose 5-30%
Speed: 158.000xg
Time: 15h

Probe: MTRNR1 (12S rRNA)



Source Data 1_related to Main Fig.4d
EL#450 bS1m-FLAG IP + EtBr treatment

Rotor: N/A
Gradient: N/A
Speed: N/A
Time: N/A



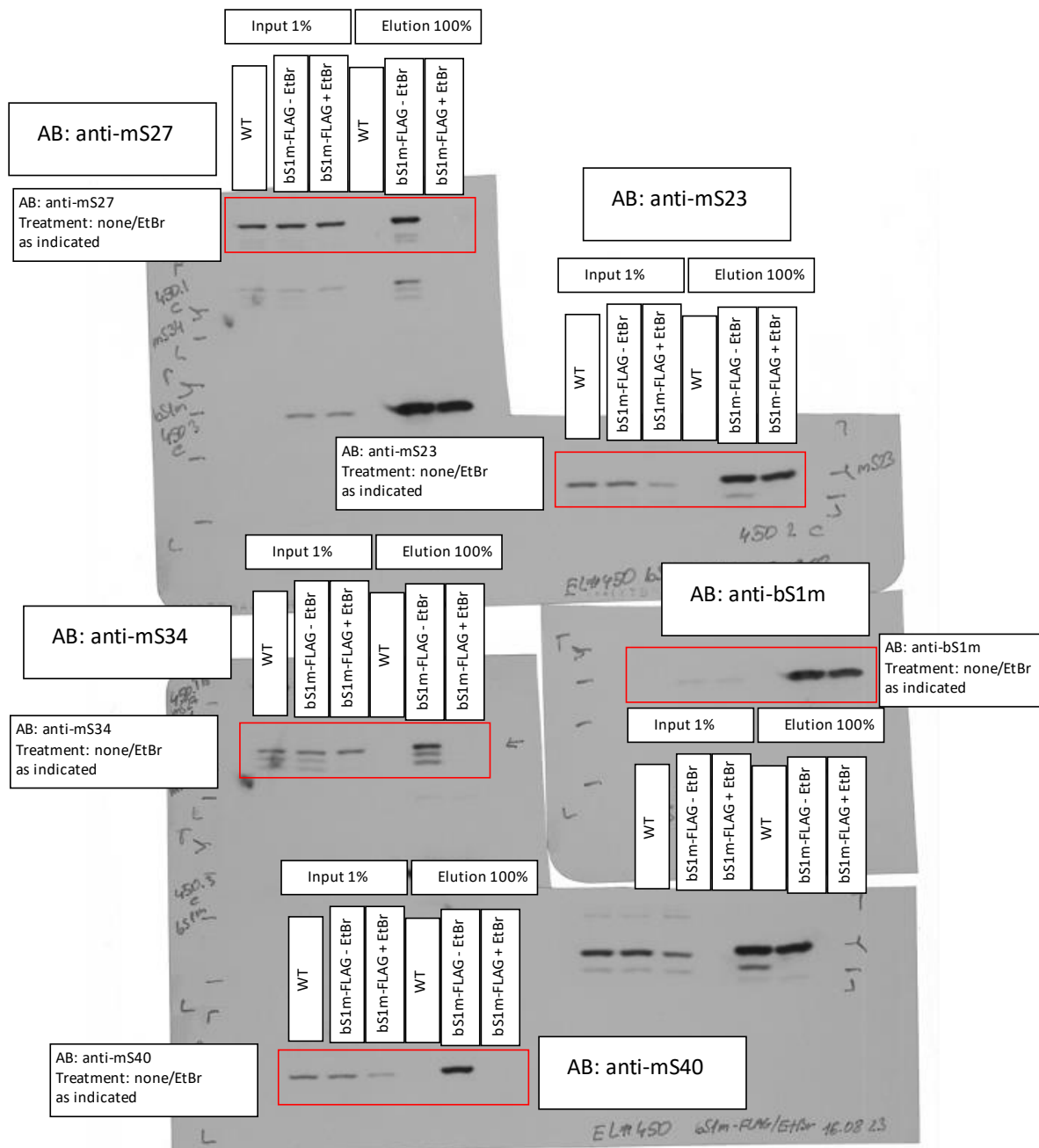
Source Data 1_related to Main Fig.4d
 EL#450 bS1m-FLAG IP + EtBr treatment

Rotor: N/A

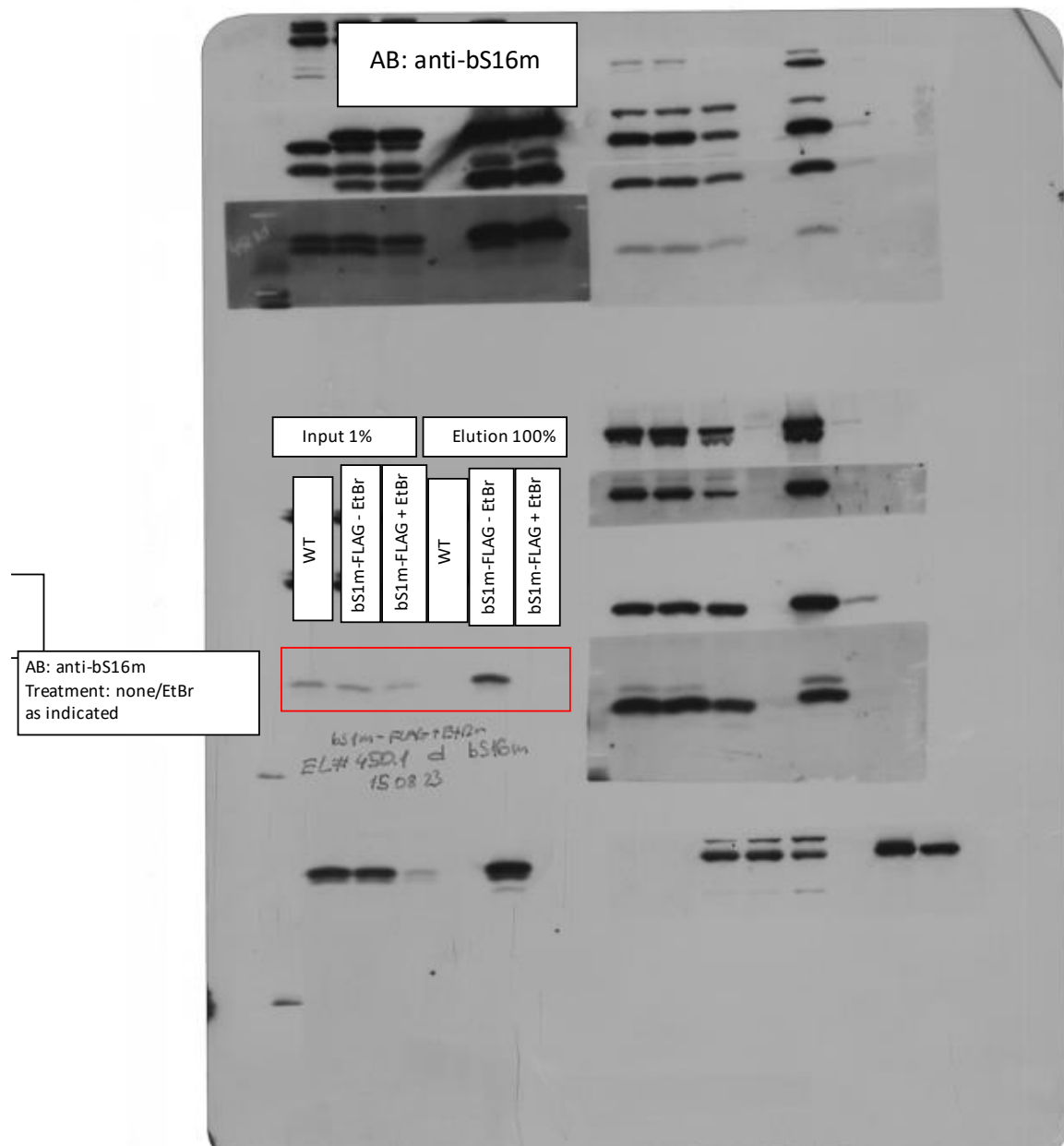
Gradient: N/A

Speed: N/A

Time: N/A

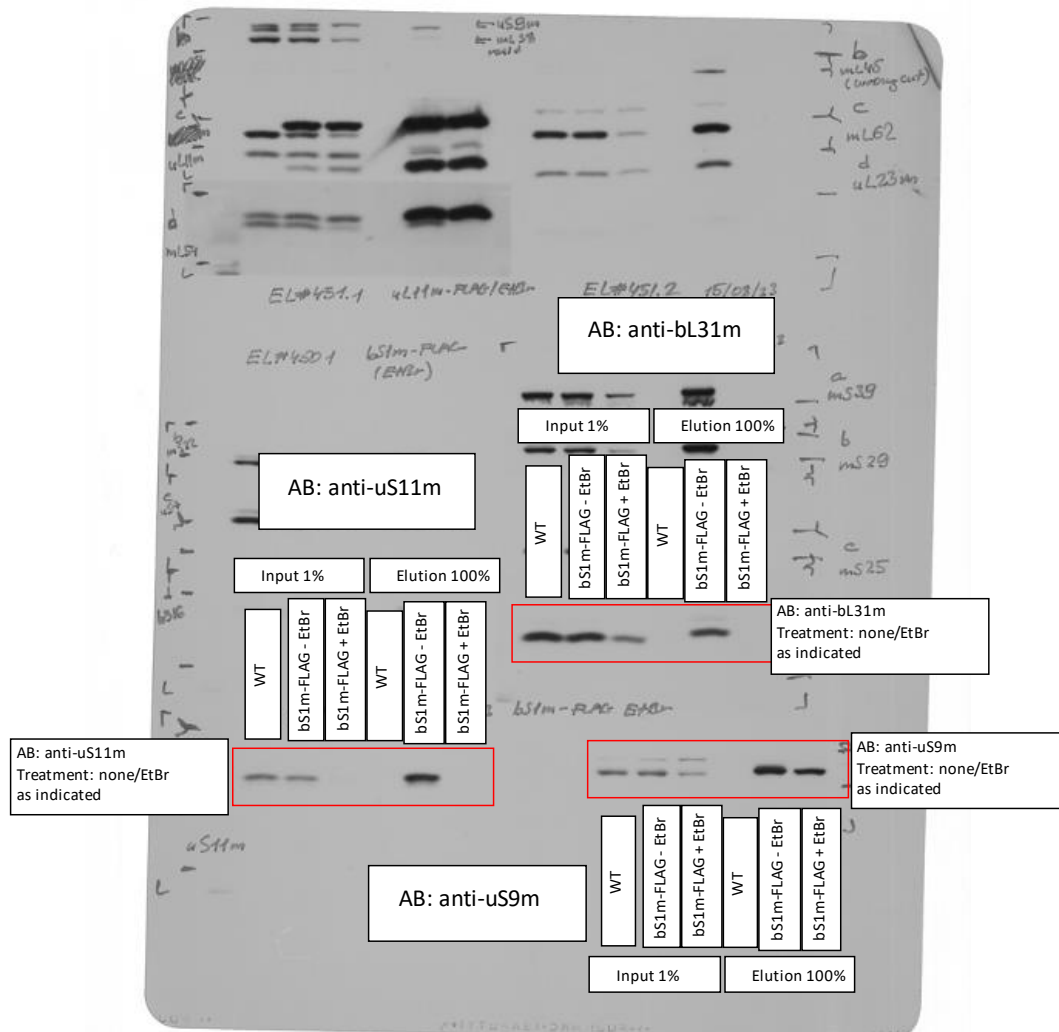


Source Data 1_related to Main Fig.4d
EL#450 bS1m-FLAG IP + EtBr treatment
Rotor: N/A
Gradient: N/A
Speed: N/A
Time: N/A



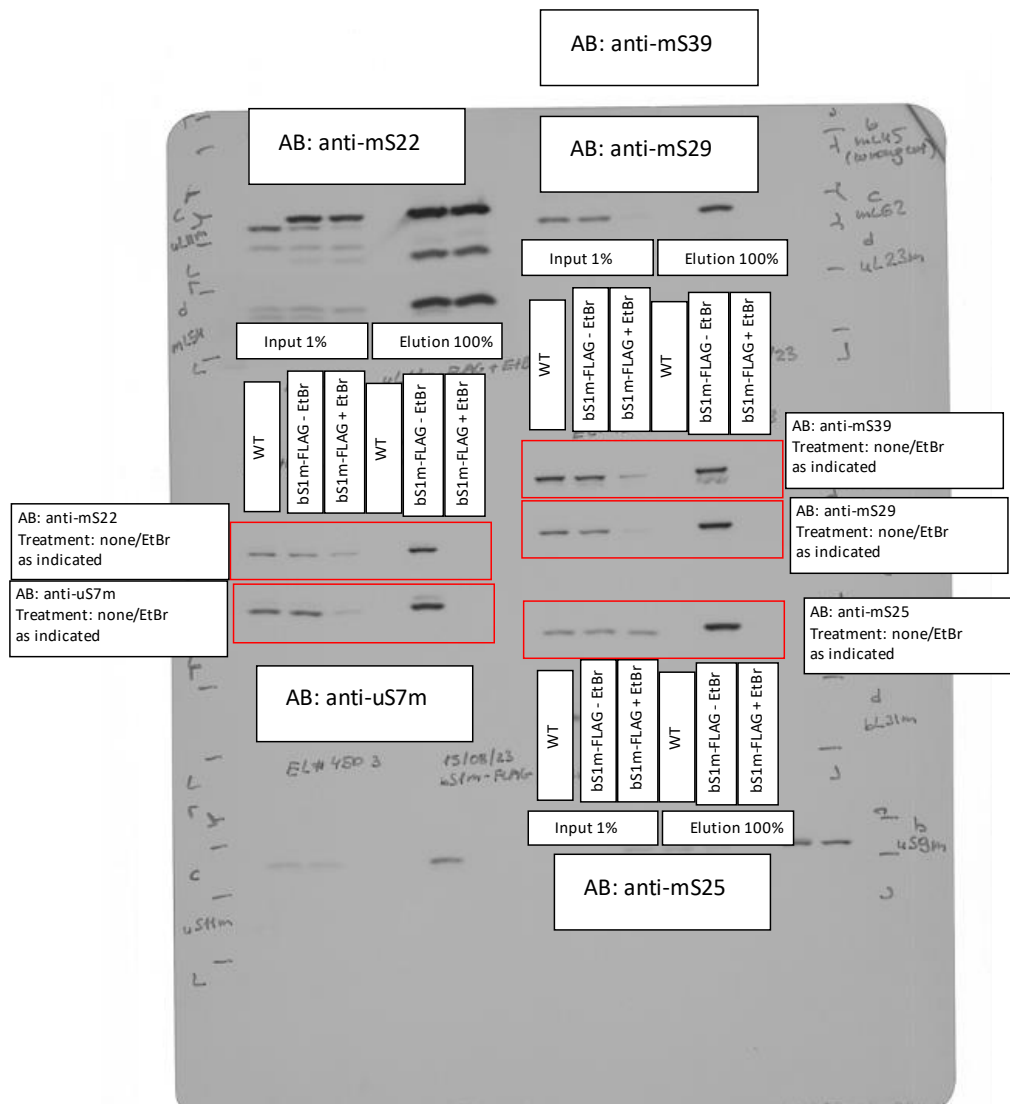
Source Data 1_related to Main Fig.4d
 EL#450 bS1m-FLAG IP + EtBr treatment

Rotor: N/A
 Gradient: N/A
 Speed: N/A
 Time: N/A



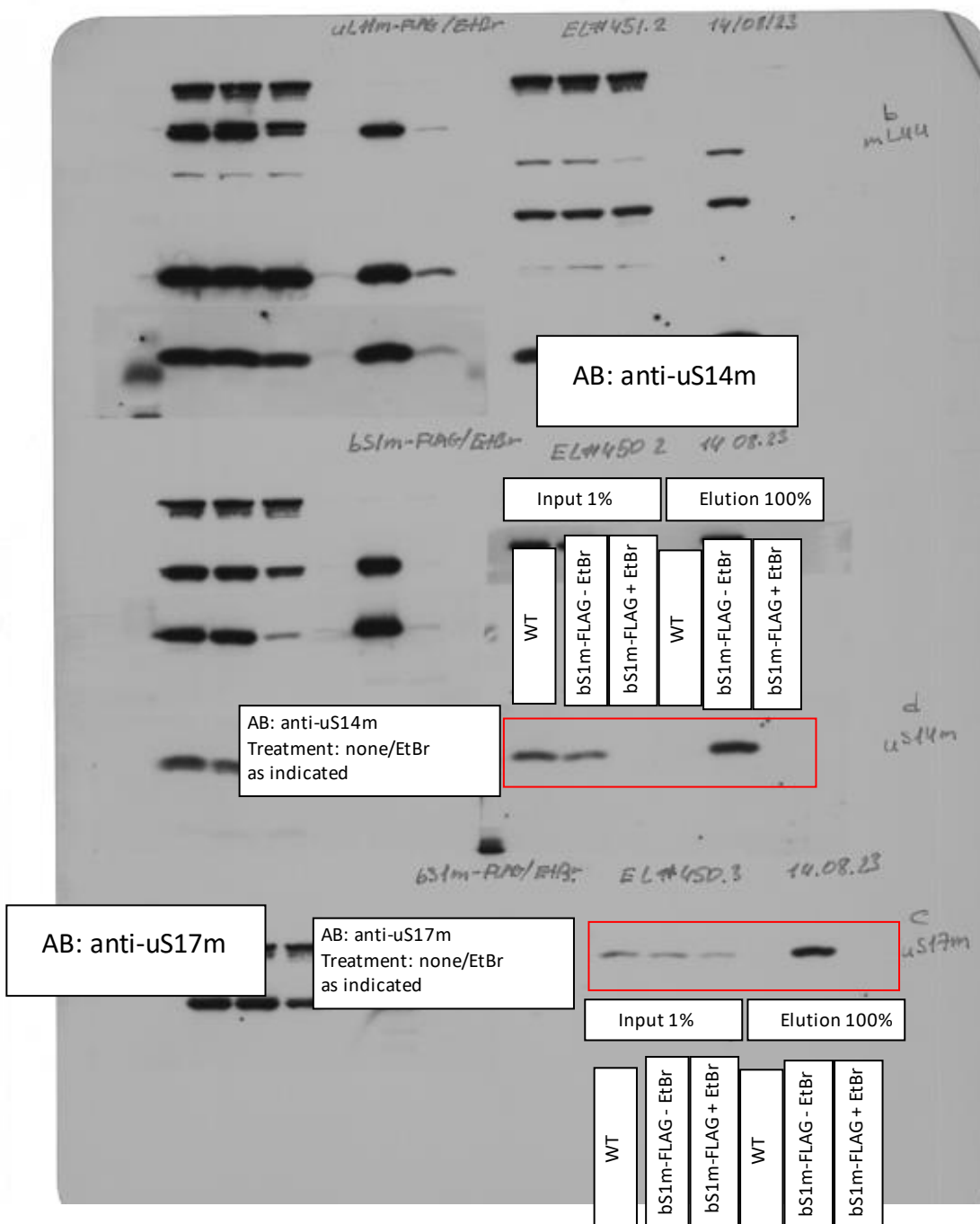
Source Data 1_related to Main Fig.4d
 EL#450 bS1m-FLAG IP + EtBr treatment

Rotor: N/A
 Gradient: N/A
 Speed: N/A
 Time: N/A



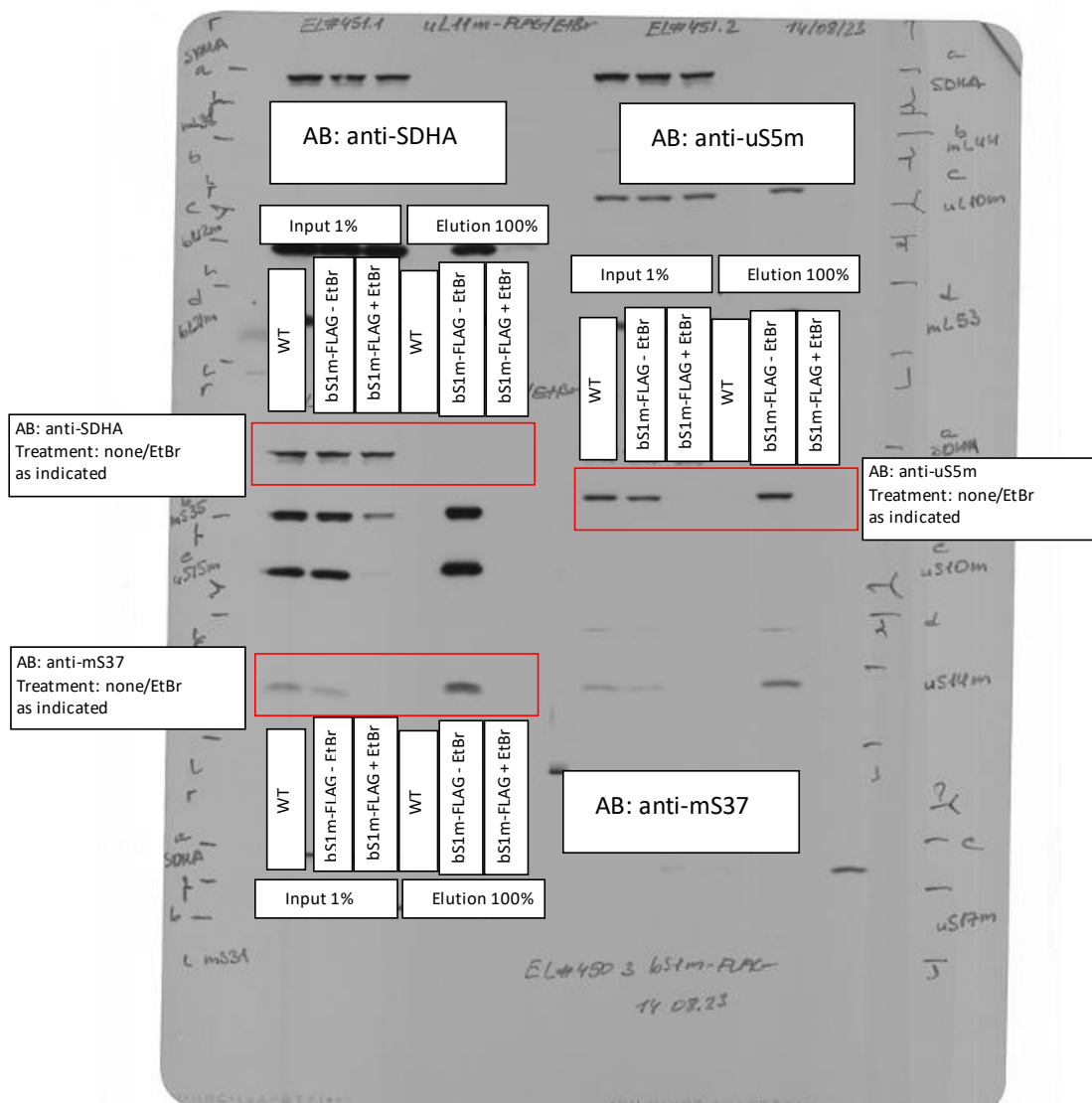
Source Data 1_related to Main Fig.4d
 EL#450 bS1m-FLAG IP + EtBr treatment

Rotor: N/A
 Gradient: N/A
 Speed: N/A
 Time: N/A



Source Data 1_related to Main Fig.4d
 EL#450 bS1m-FLAG IP + EtBr treatment

Rotor: N/A
 Gradient: N/A
 Speed: N/A
 Time: N/A



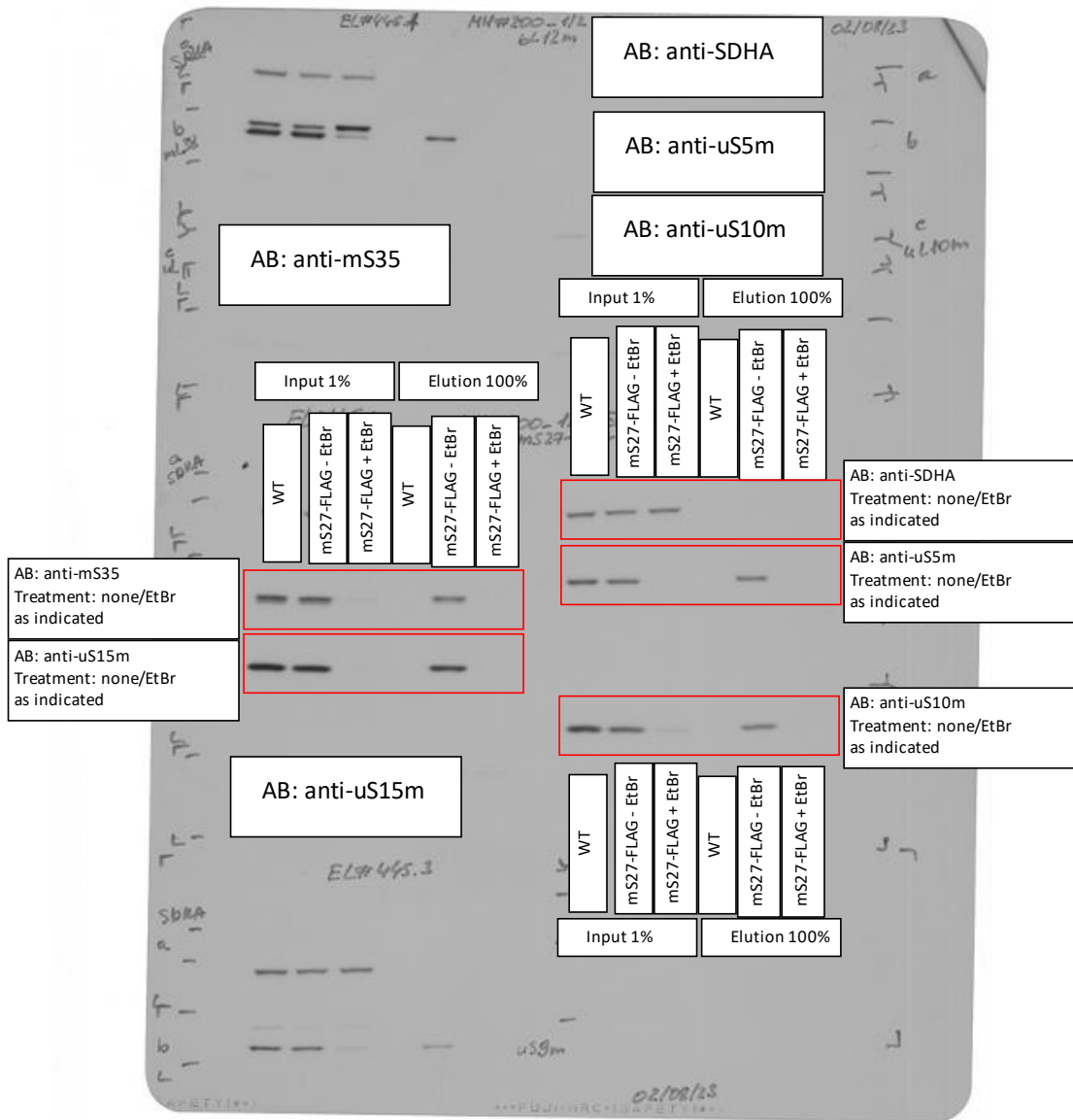
Source Data 1_related to Main Fig.4e
 EL#445 mS27-FLAG IP + EtBr treatment

Rotor: N/A

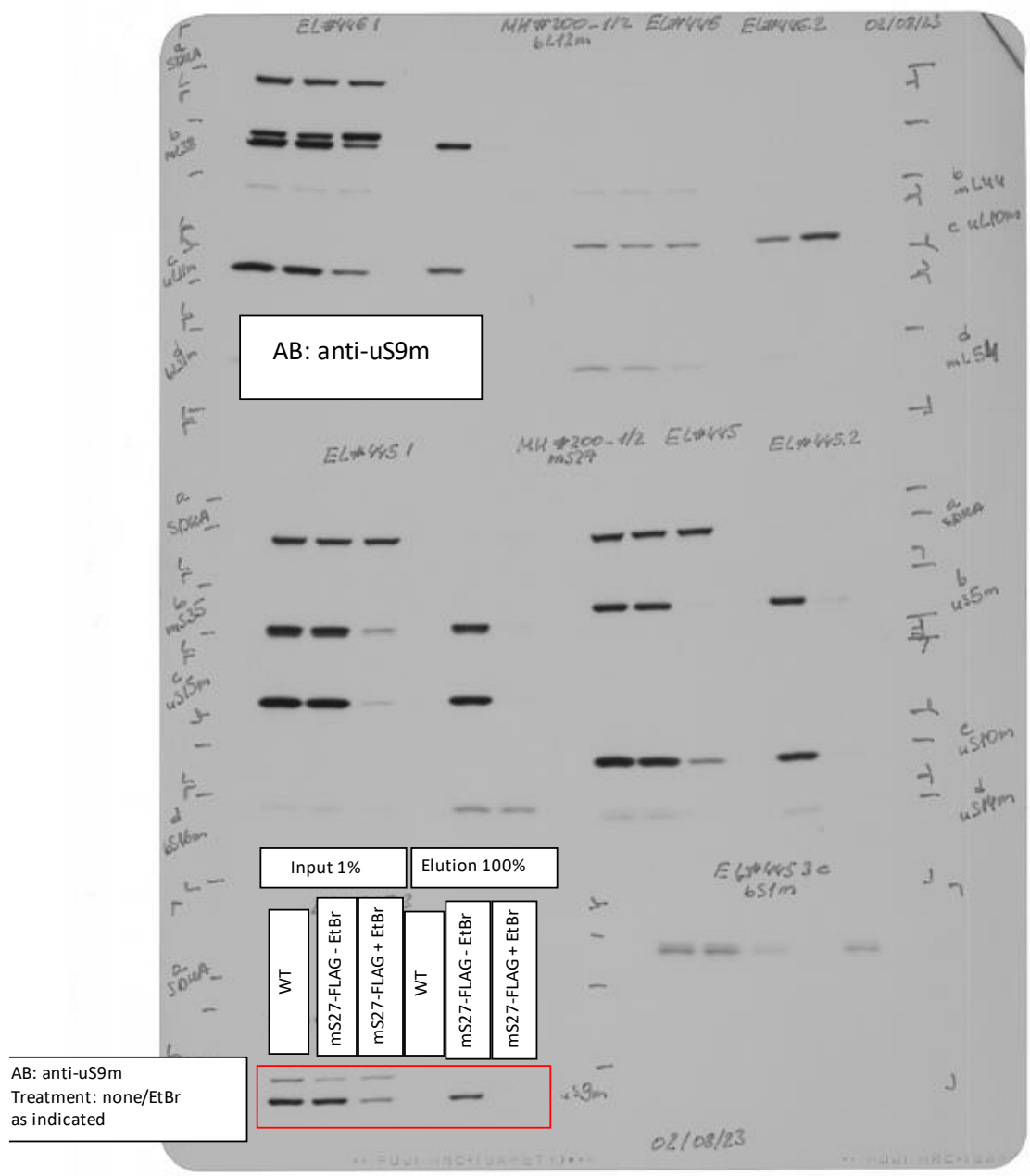
Gradient: N/A

Speed: N/A

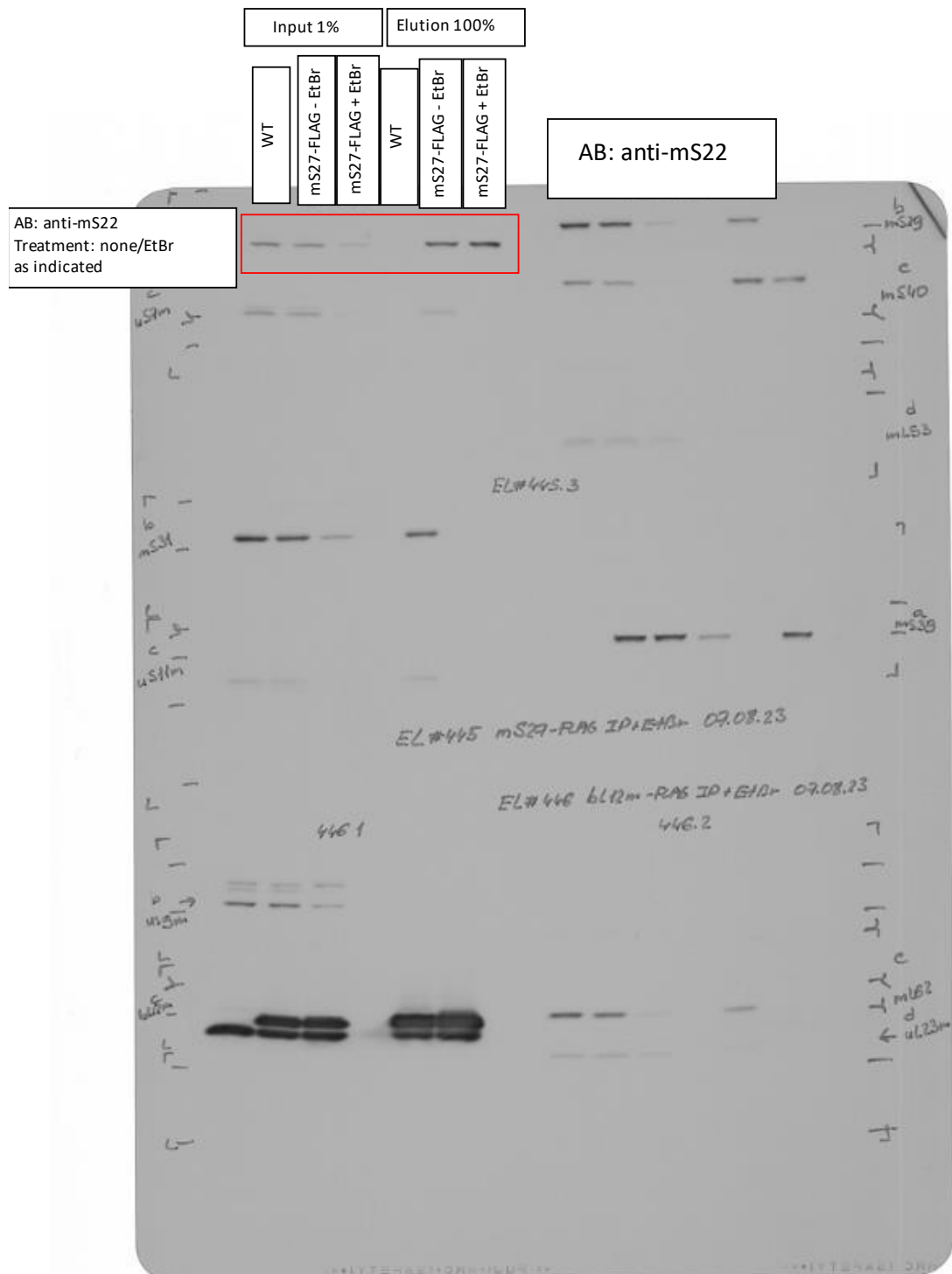
Time: N/A



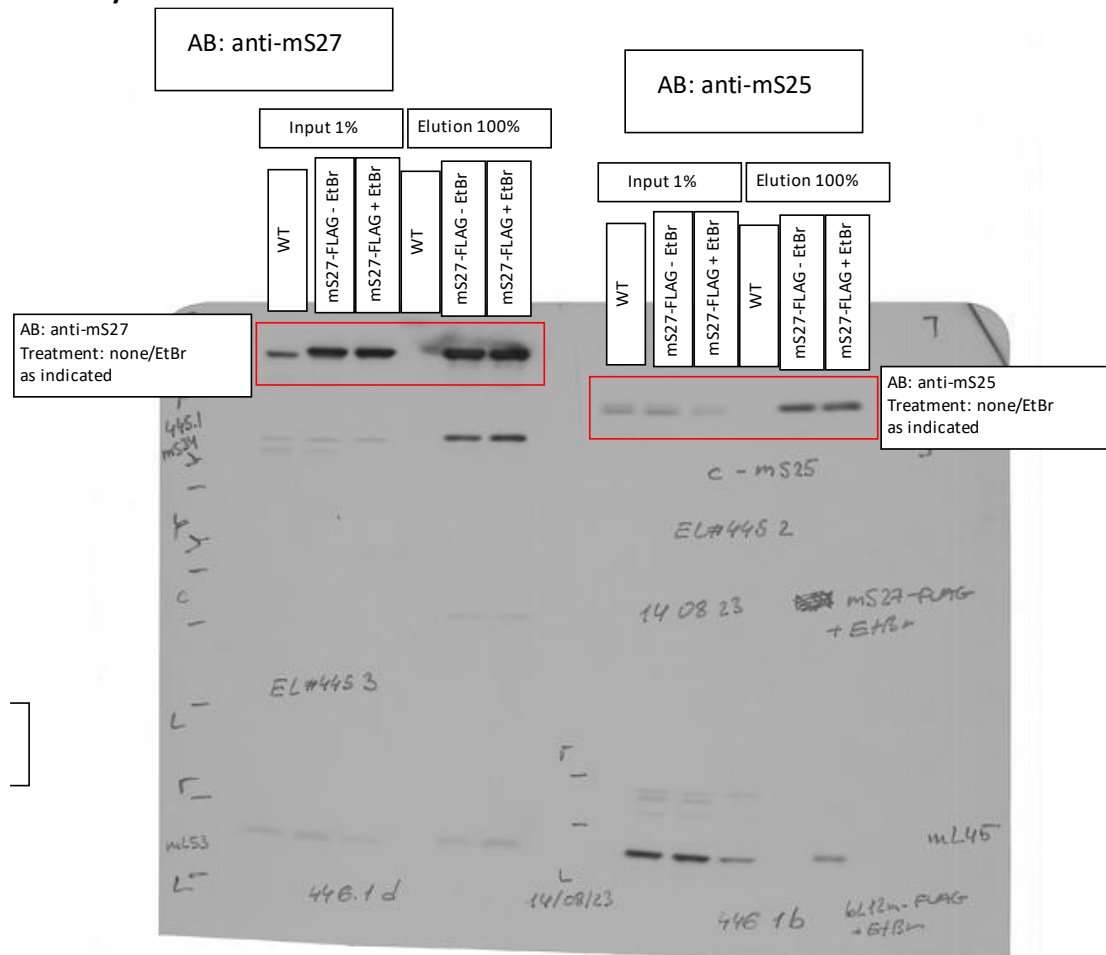
Source Data 1_related to Main Fig.4e
 EL#445 mS27-FLAG IP + EtBr treatment
 Rotor: N/A
 Gradient: N/A
 Speed: N/A
 Time: N/A



Source Data 1_related to Main Fig.4e
 EL#445 mS27-FLAG IP + EtBr treatment
 Rotor: N/A
 Gradient: N/A
 Speed: N/A
 Time: N/A

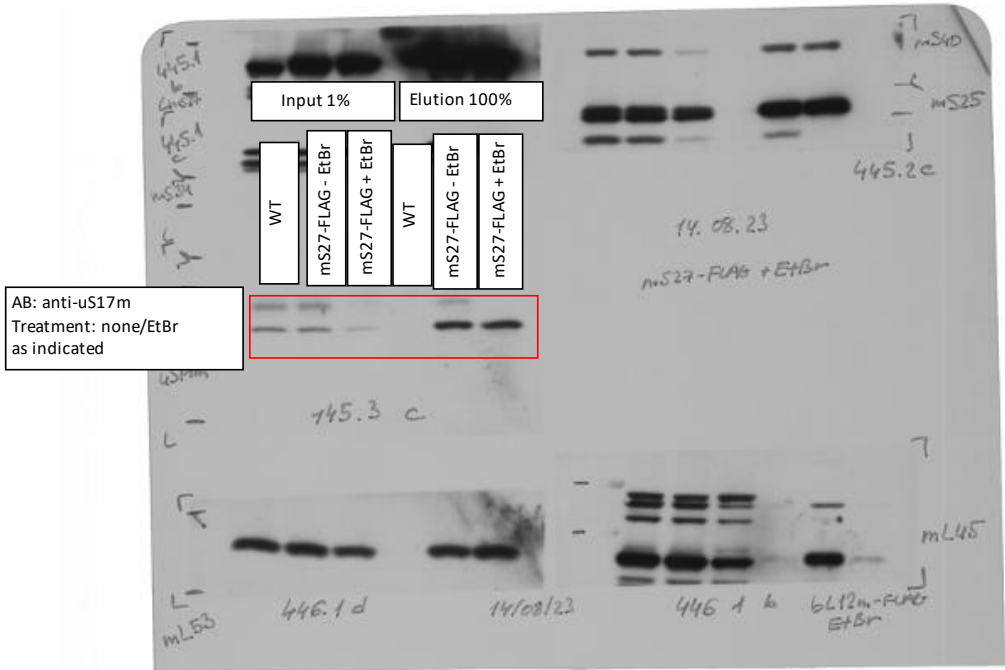


Source Data 1_related to Main Fig.4e
 EL#445 mS27-FLAG IP + EtBr treatment
 Rotor: N/A
 Gradient: N/A
 Speed: N/A
 Time: N/A

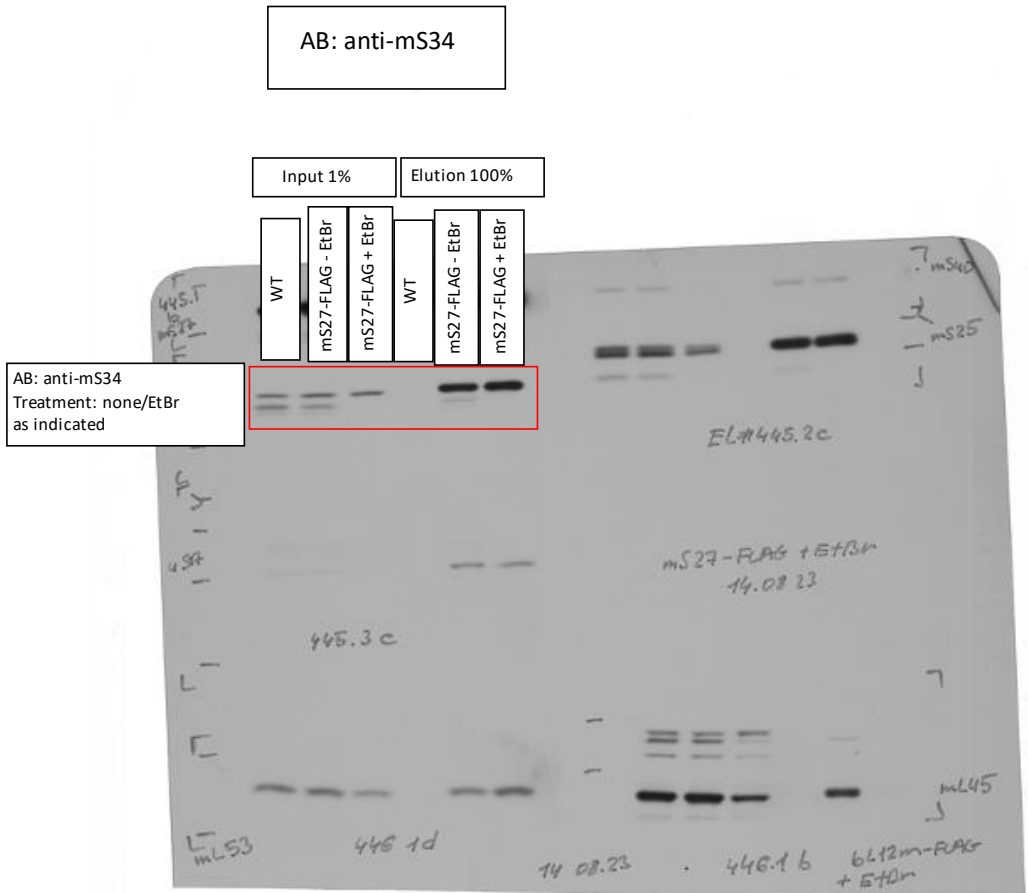


Source Data 1_related to Main Fig.4e
EL#445 mS27-FLAG IP + EtBr treatment
Rotor: N/A
Gradient: N/A
Speed: N/A
Time: N/A

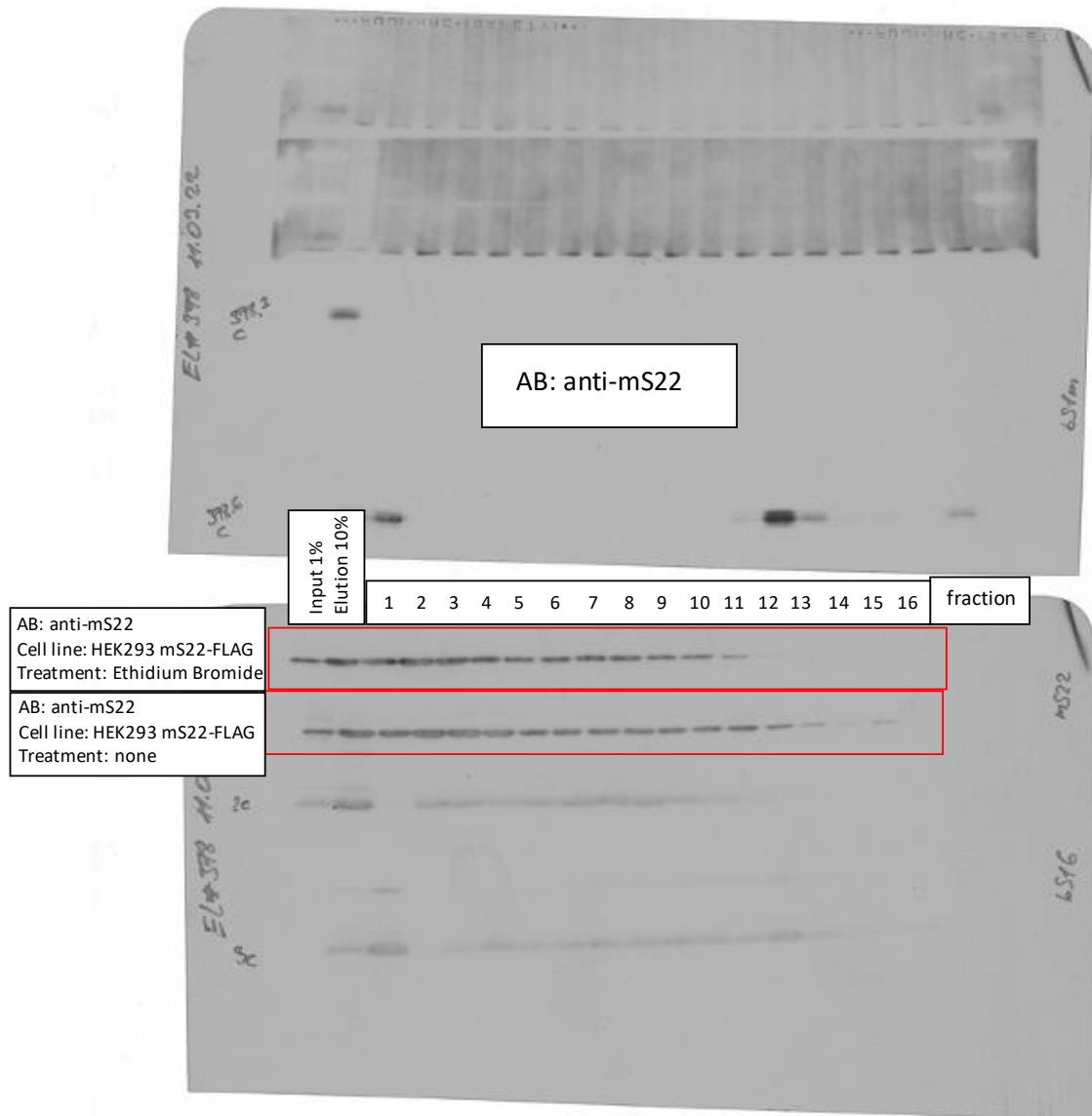
AB: anti-uS17m



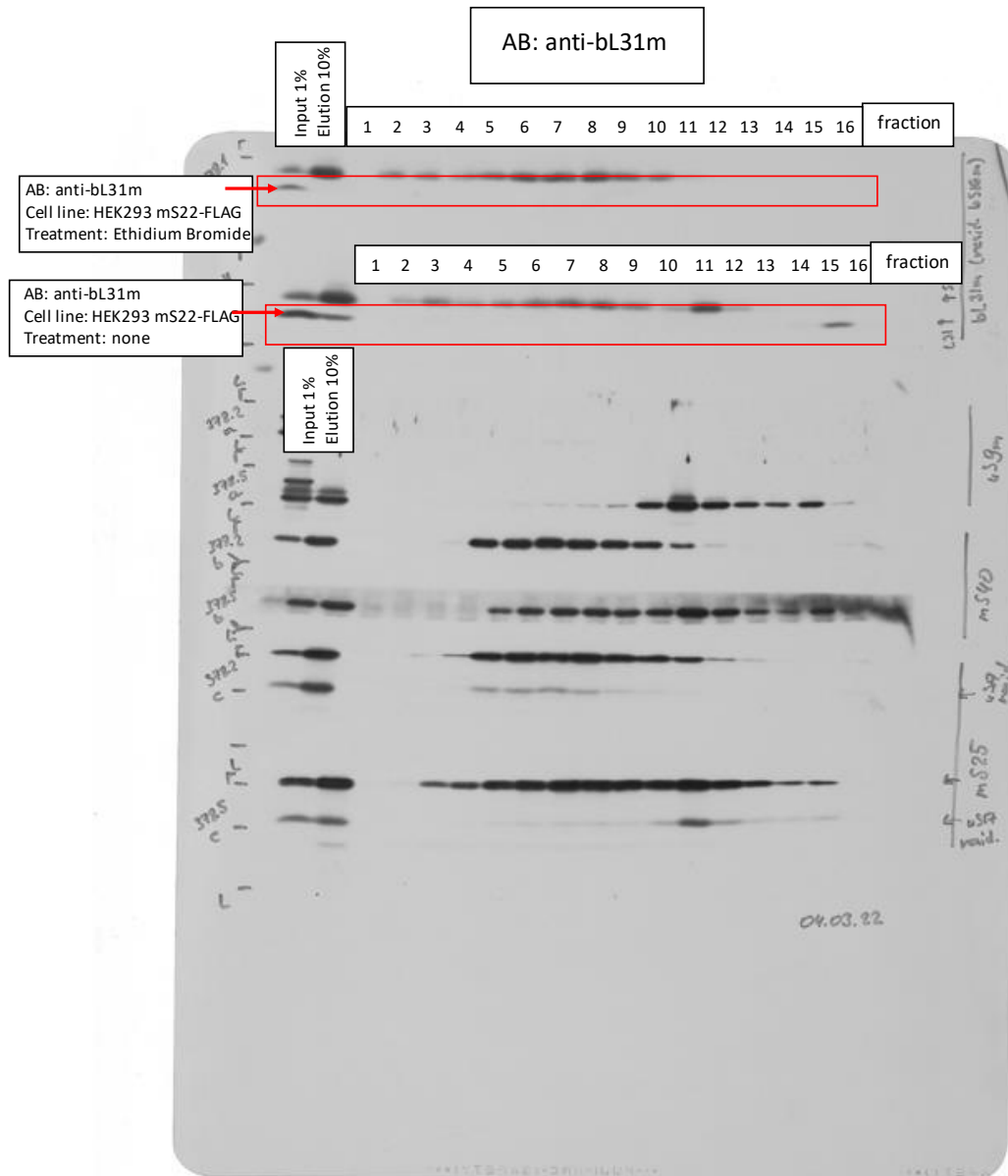
Source Data 1_related to Main Fig.4e
 EL#445 mS27-FLAG IP + EtBr treatment
 Rotor: N/A
 Gradient: N/A
 Speed: N/A
 Time: N/A



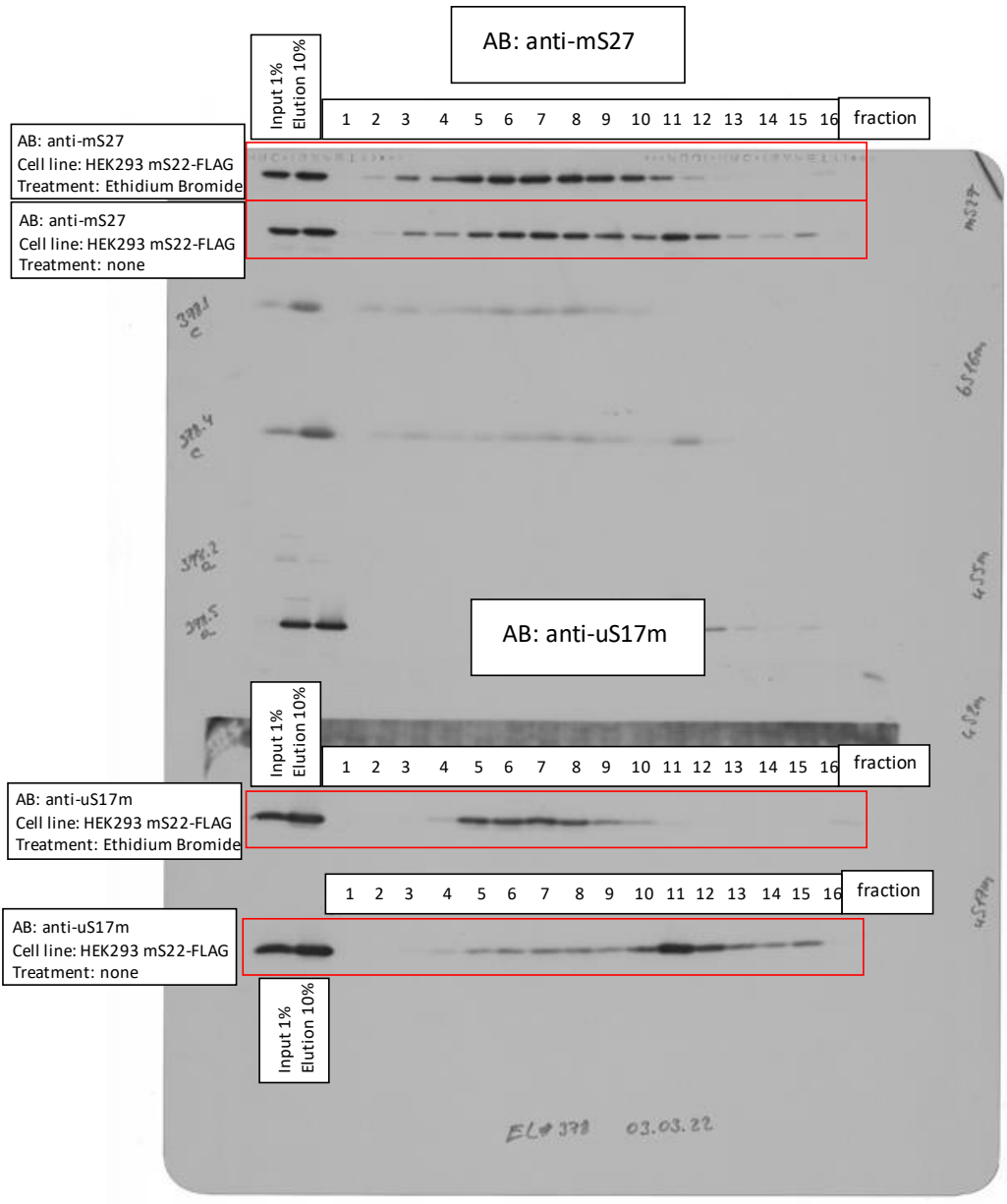
Source Data 1_related to Main Fig.4f
 EL#378 mS22-FLAG IP + Gradient + EtBr treatment
 Rotor: SW41 Ti
 Gradient: Sucrose 5-30%
 Speed: 158.000xg
 Time: 15h



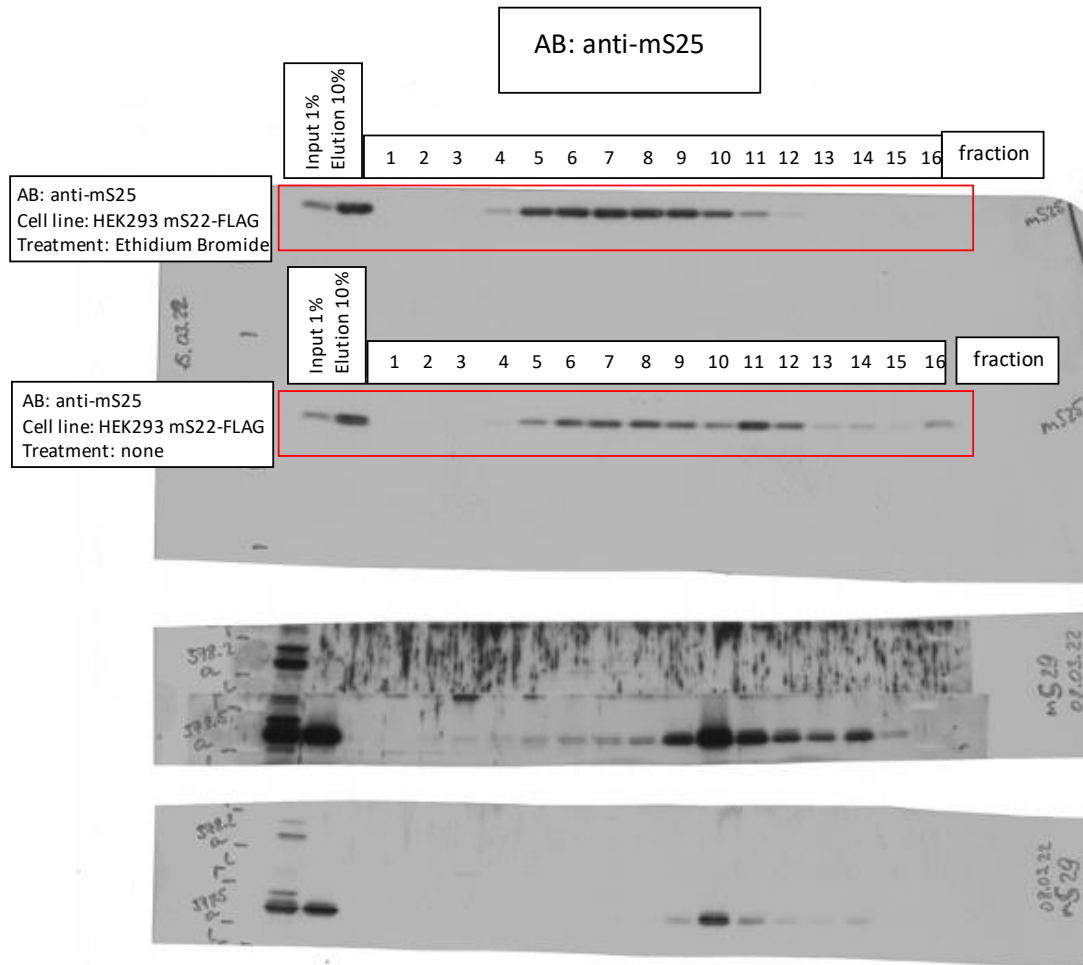
Source Data 1_related to Main Fig.4f
 EL#378 mS22-FLAG IP + Gradient + EtBr treatment
 Rotor: SW41 Ti
 Gradient: Sucrose 5-30%
 Speed: 158.000xg
 Time: 15h



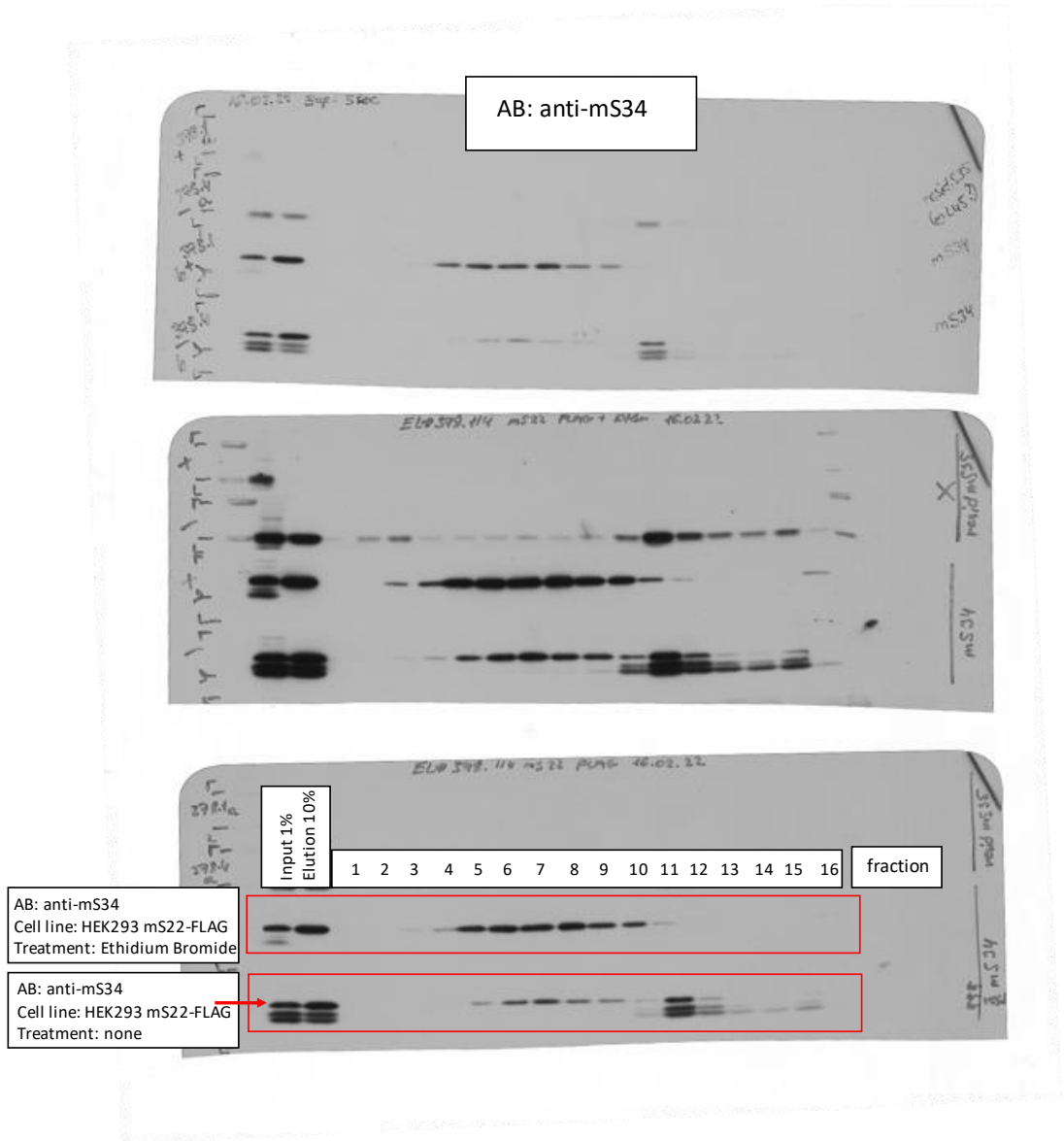
Source Data 1_related to Main Fig.4f
 EL#378 mS22-FLAG IP + Gradient + EtBr treatment
 Rotor: SW41 Ti
 Gradient: Sucrose 5-30%
 Speed: 158.000xg
 Time: 15h



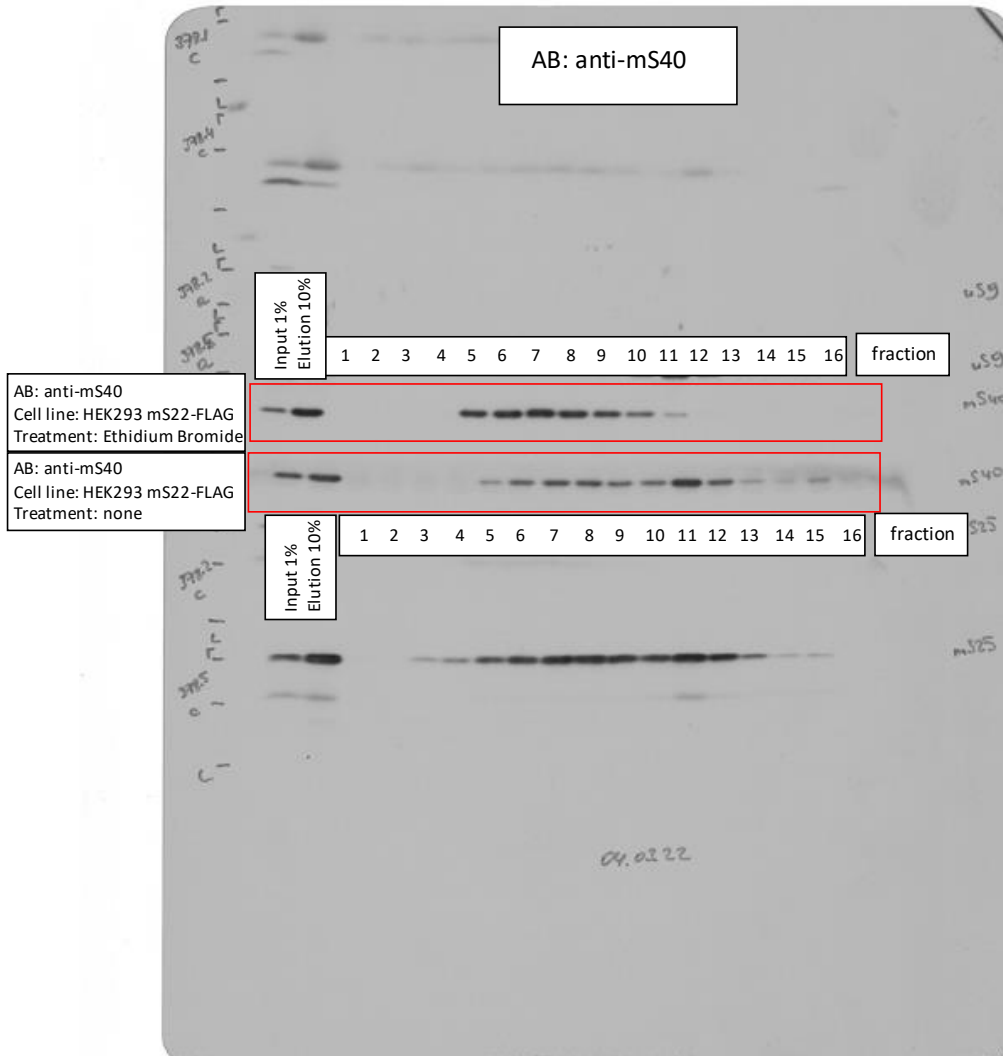
Source Data 1_related to Main Fig.4f
EL#378 mS22-FLAG IP + Gradient + EtBr treatment
Rotor: SW41 Ti
Gradient: Sucrose 5-30%
Speed: 158.000xg
Time: 15h



Source Data 1_related to Main Fig.4f
 EL#378 mS22-FLAG IP + Gradient + EtBr treatment
 Rotor: SW41 Ti
 Gradient: Sucrose 5-30%
 Speed: 158.000xg
 Time: 15h



Source Data 1_related to Main Fig.4f
 EL#378 mS22-FLAG IP + Gradient + EtBr treatment
 Rotor: SW41 Ti
 Gradient: Sucrose 5-30%
 Speed: 158.000xg
 Time: 15h



Source Data 1_related to Main Fig.4f
 EL#378 mS22-FLAG IP + Gradient + EtBr treatment
 Rotor: SW41 Ti
 Gradient: Sucrose 5-30%
 Speed: 158.000xg
 Time: 15h

