

Source Data 2_related to Extended Data Fig.3a

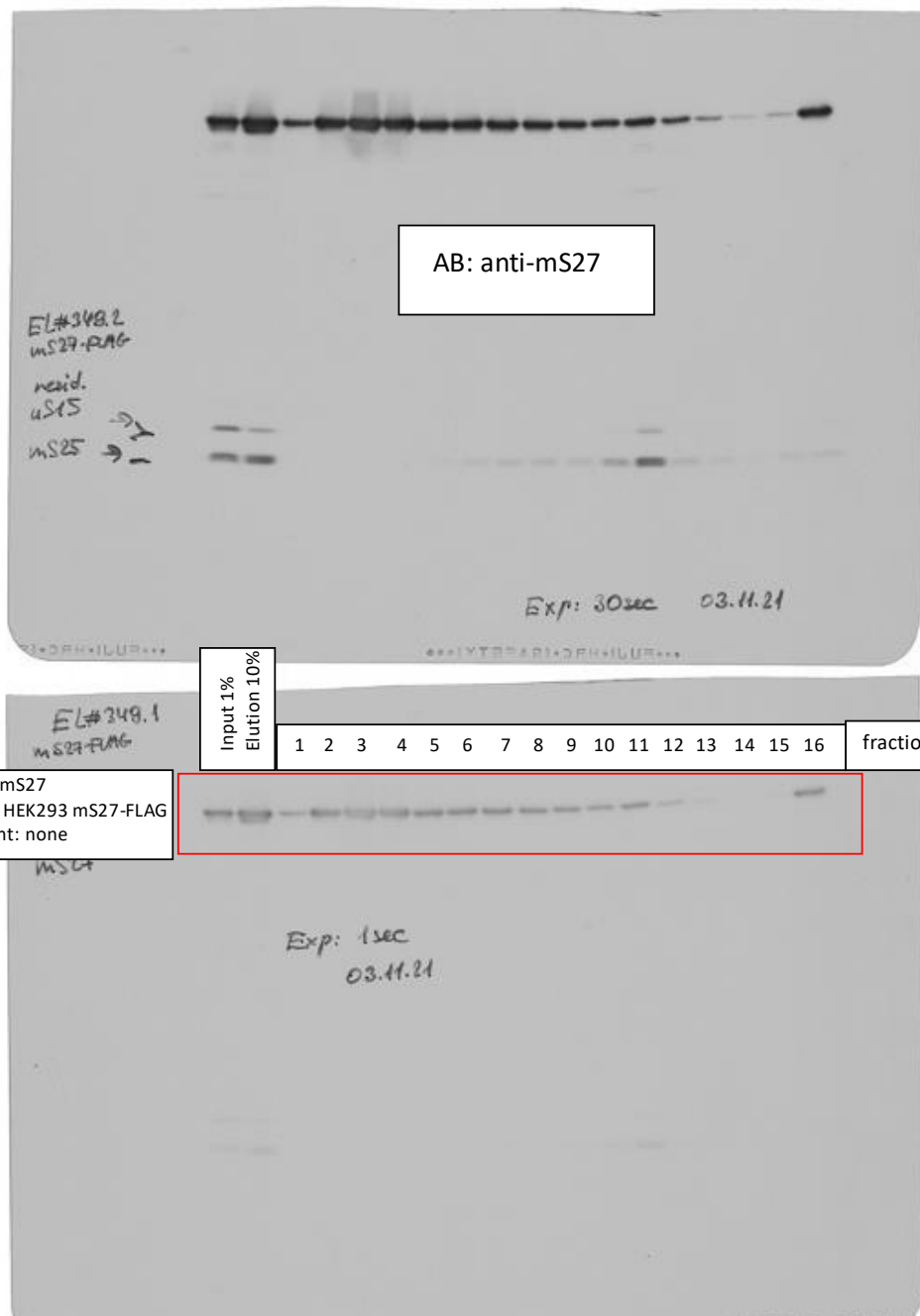
EL#349 mS27-FLAG IP + Gradient

Rotor: SW41 Ti

Gradient: Sucrose 5-30%

Speed: 158.000xg

Time: 15h



Source Data 2_related to Extended Data Fig.3a

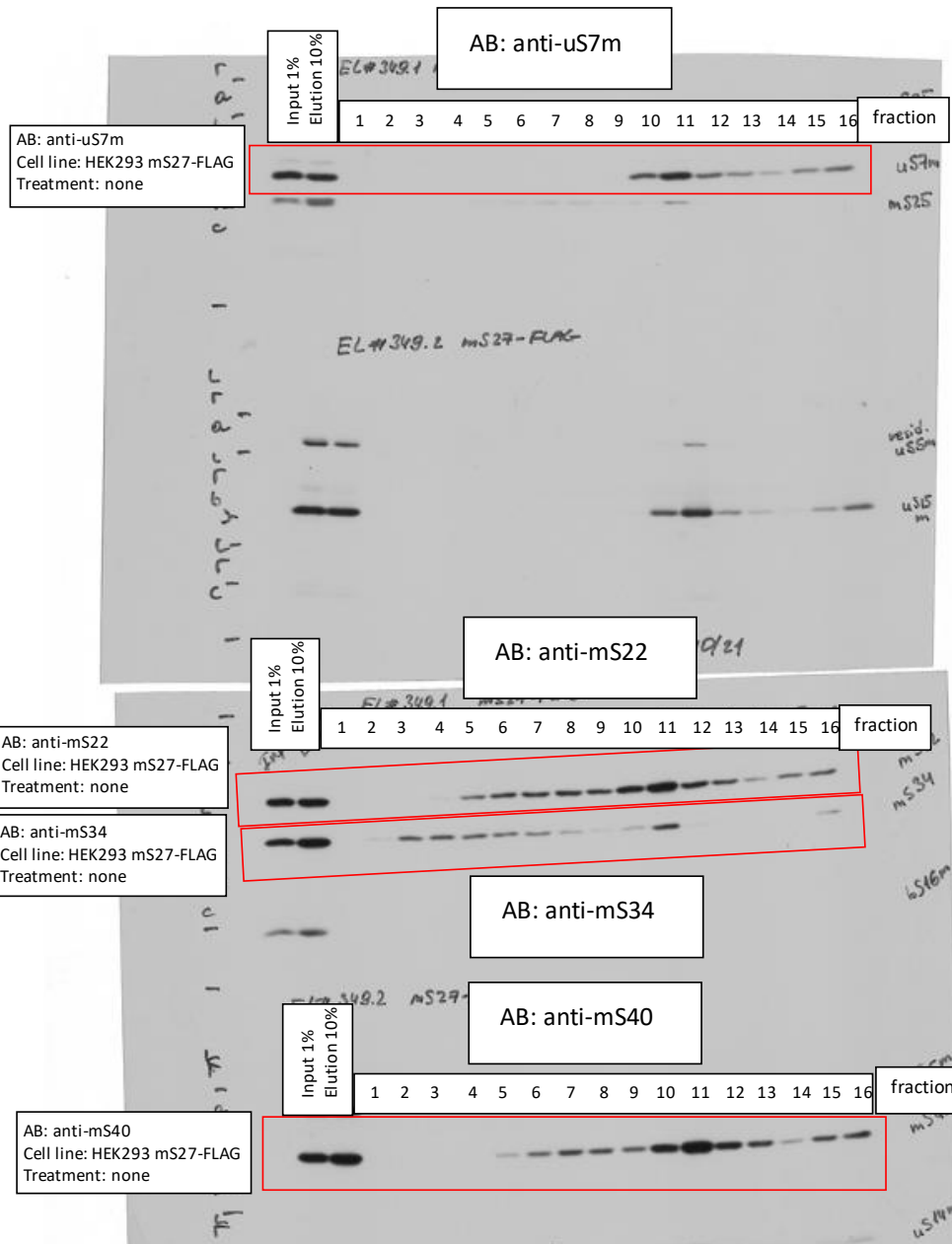
EL#349 mS27-FLAG IP + Gradient

Rotor: SW41 Ti

Gradient: Sucrose 5-30%

Speed: 158.000xg

Time: 15h



Source Data 2_related to Extended Data Fig.3a

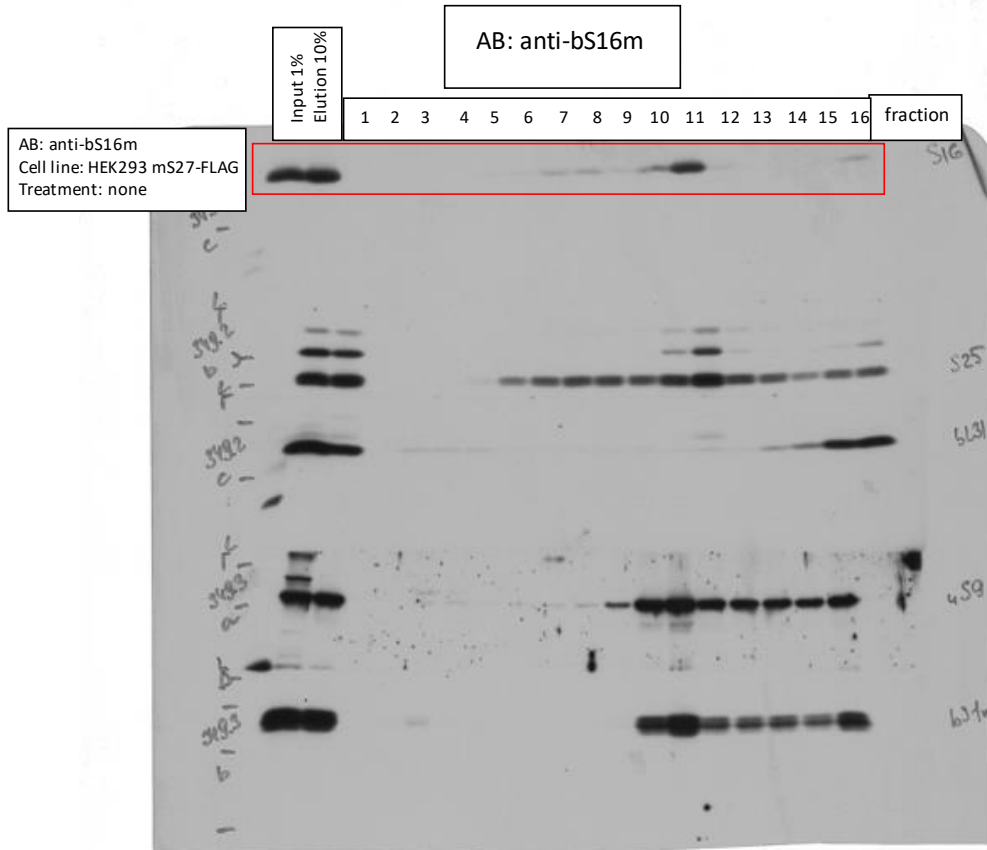
EL#349 mS27-FLAG IP + Gradient

Rotor: SW41 Ti

Gradient: Sucrose 5-30%

Speed: 158.000xg

Time: 15h



Source Data 2_related to Extended Data Fig.3a

EL#349 mS27-FLAG IP + Gradient

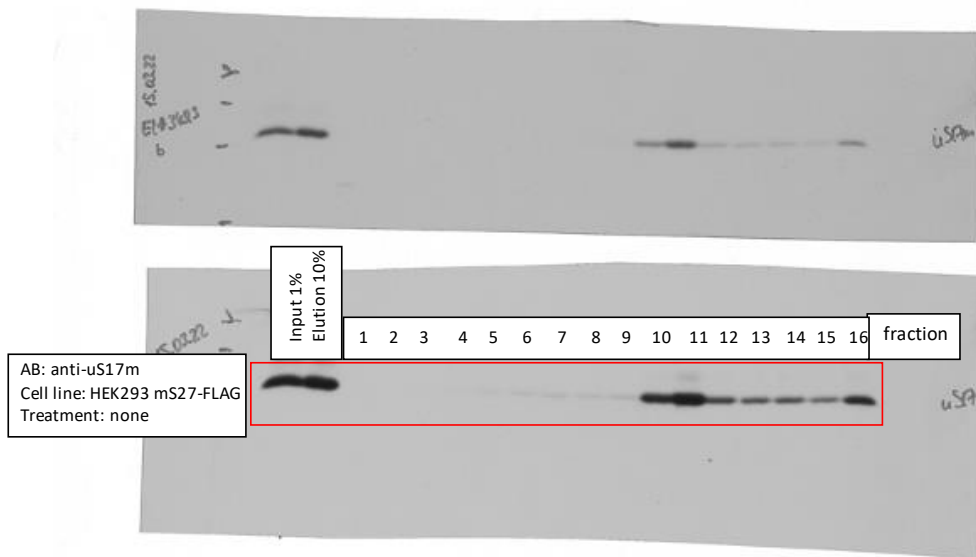
Rotor: SW41 Ti

Gradient: Sucrose 5-30%

Speed: 158.000xg

Time: 15h

AB: anti-uS17m



Source Data 2_related to Extended Data Fig.3a

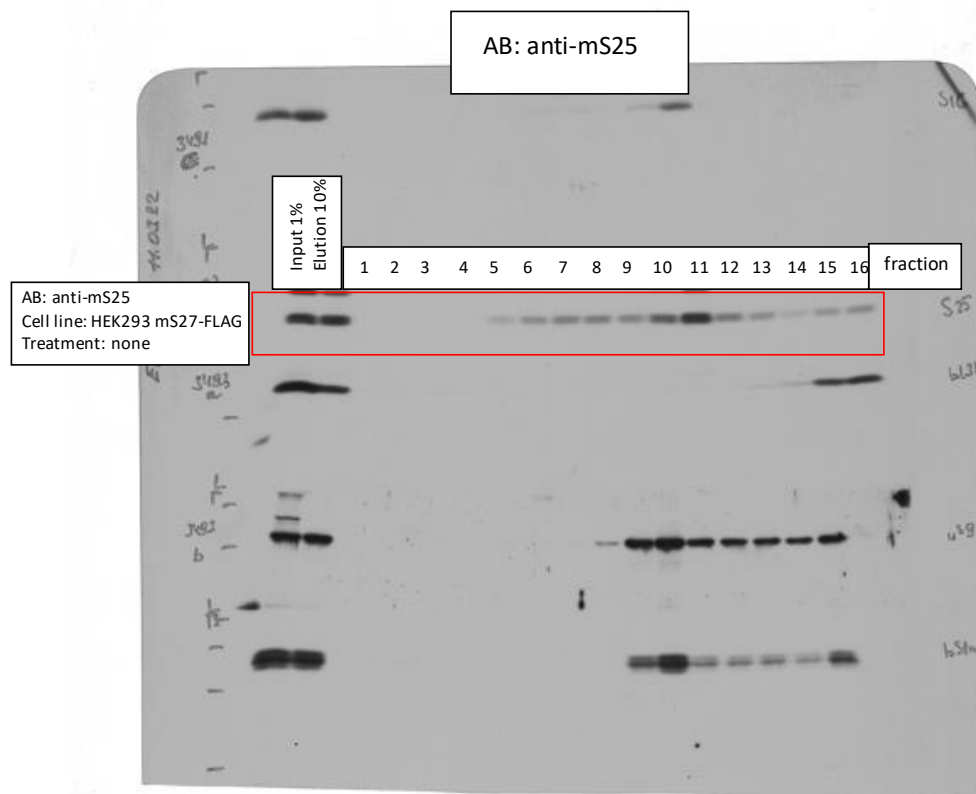
EL#349 mS27-FLAG IP + Gradient

Rotor: SW41 Ti

Gradient: Sucrose 5-30%

Speed: 158.000xg

Time: 15h



Source Data 2_related to Extended Data Fig.3a

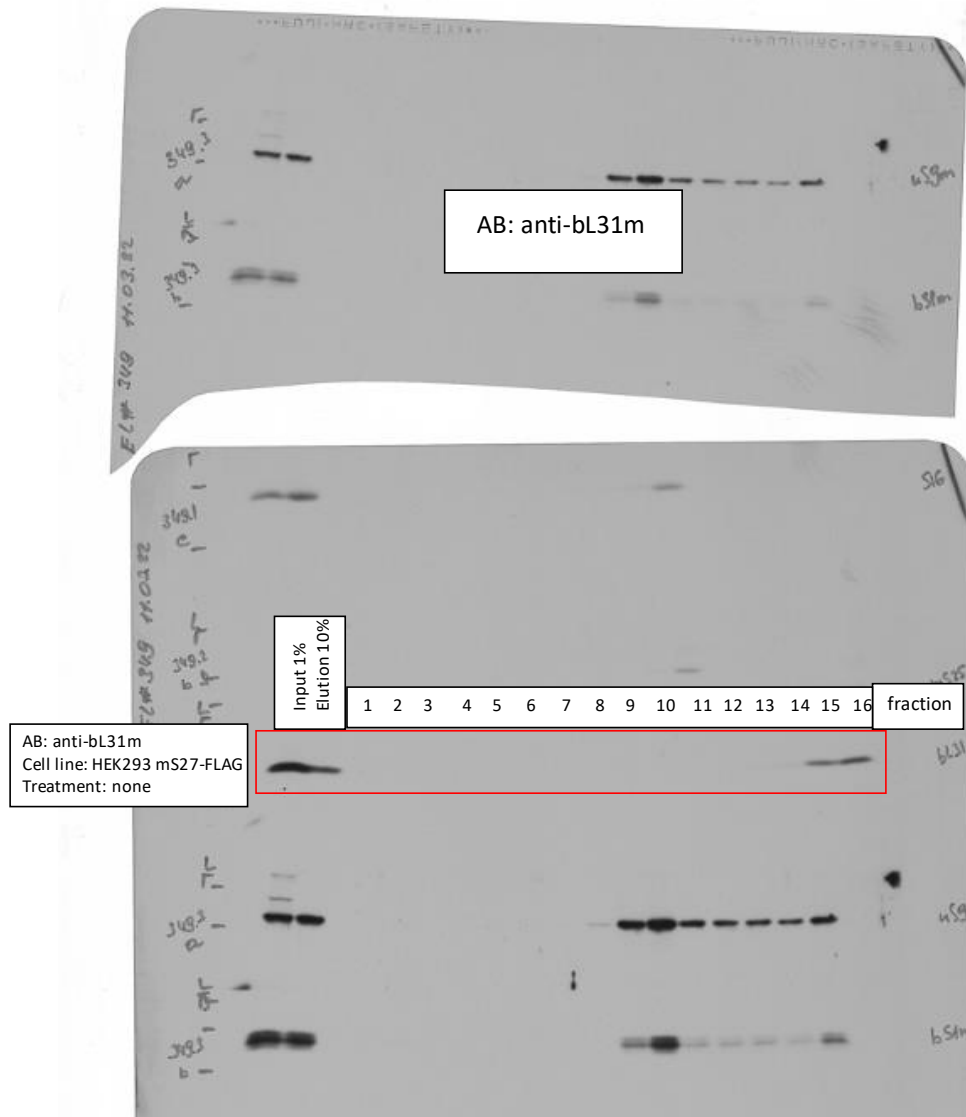
EL#349 mS27-FLAG IP + Gradient

Rotor: SW41 Ti

Gradient: Sucrose 5-30%

Speed: 158.000xg

Time: 15h



Source Data 2_related to Extended Data Fig.3b

EL#373 mS25-FLAG IP + Gradient

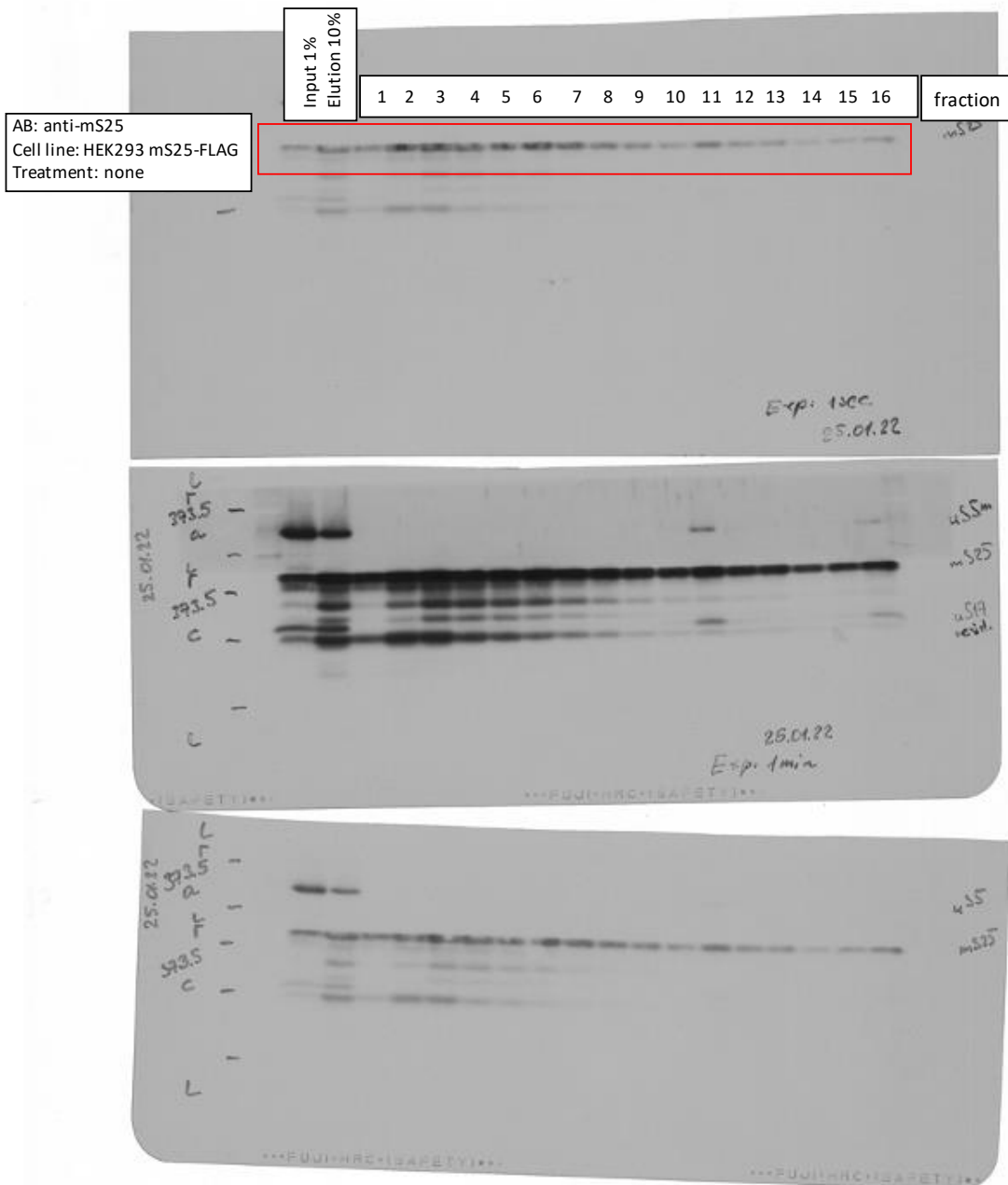
Rotor: SW41 Ti

Gradient: Sucrose 5-30%

Speed: 158.000xg

Time: 15h

AB: anti-mS25



Source Data 2_related to Extended Data Fig.3b

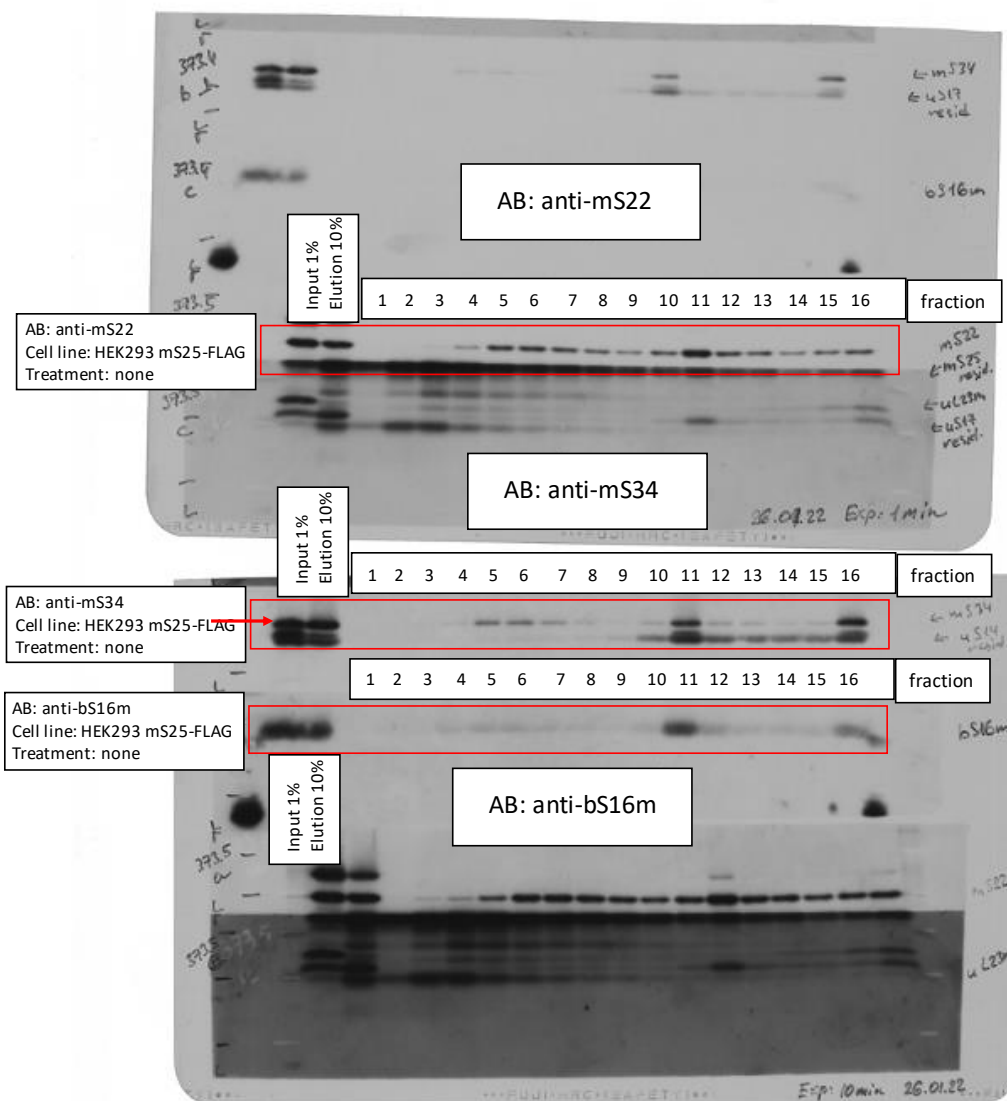
EL#373 mS25-FLAG IP + Gradient

Rotor: SW41 Ti

Gradient: Sucrose 5-30%

Speed: 158.000xg

Time: 15h



Source Data 2_related to Extended Data Fig.3b

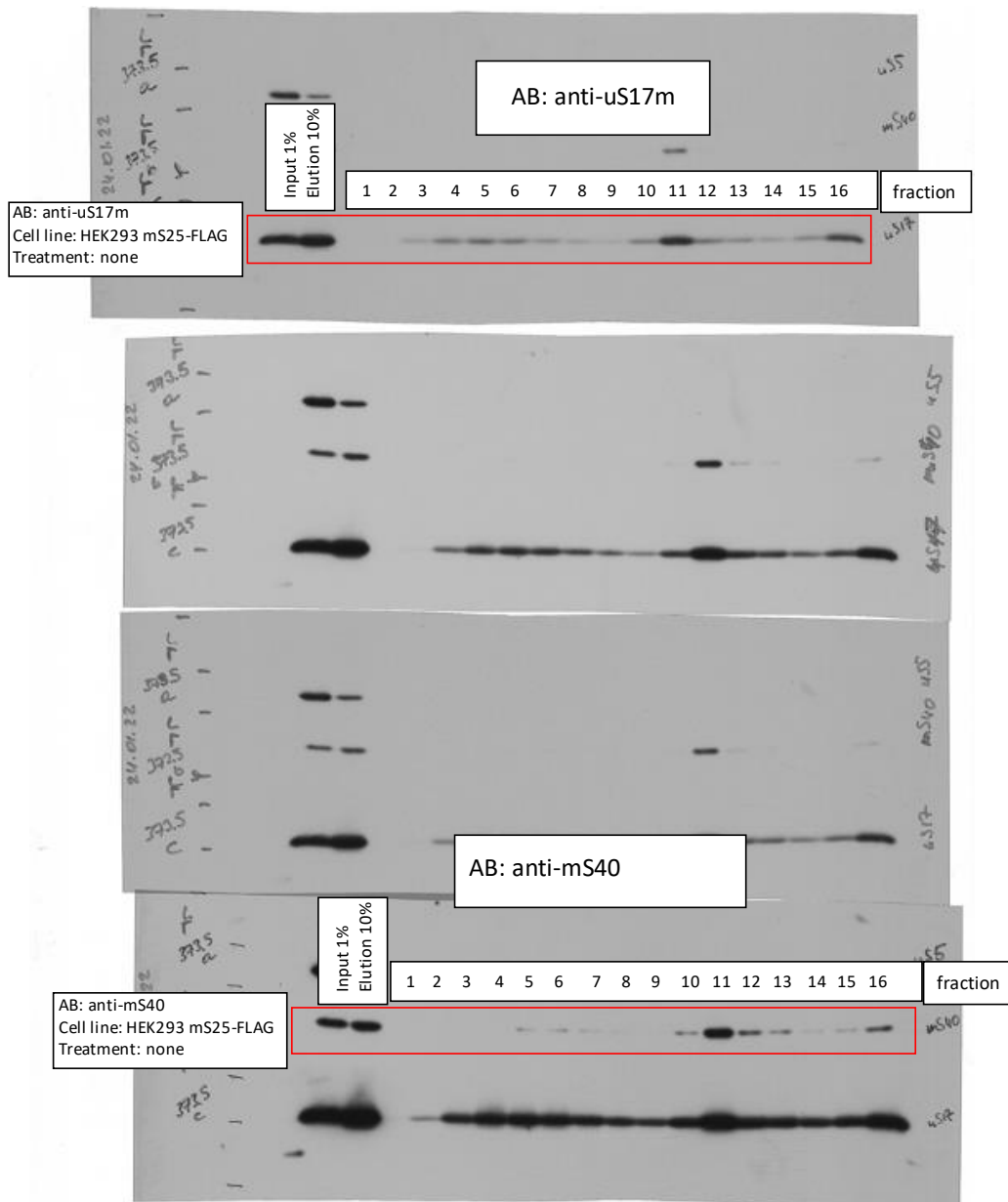
EL#373 mS25-FLAG IP + Gradient

Rotor: SW41 Ti

Gradient: Sucrose 5-30%

Speed: 158.000xg

Time: 15h



Source Data 2_related to Extended Data Fig.3b

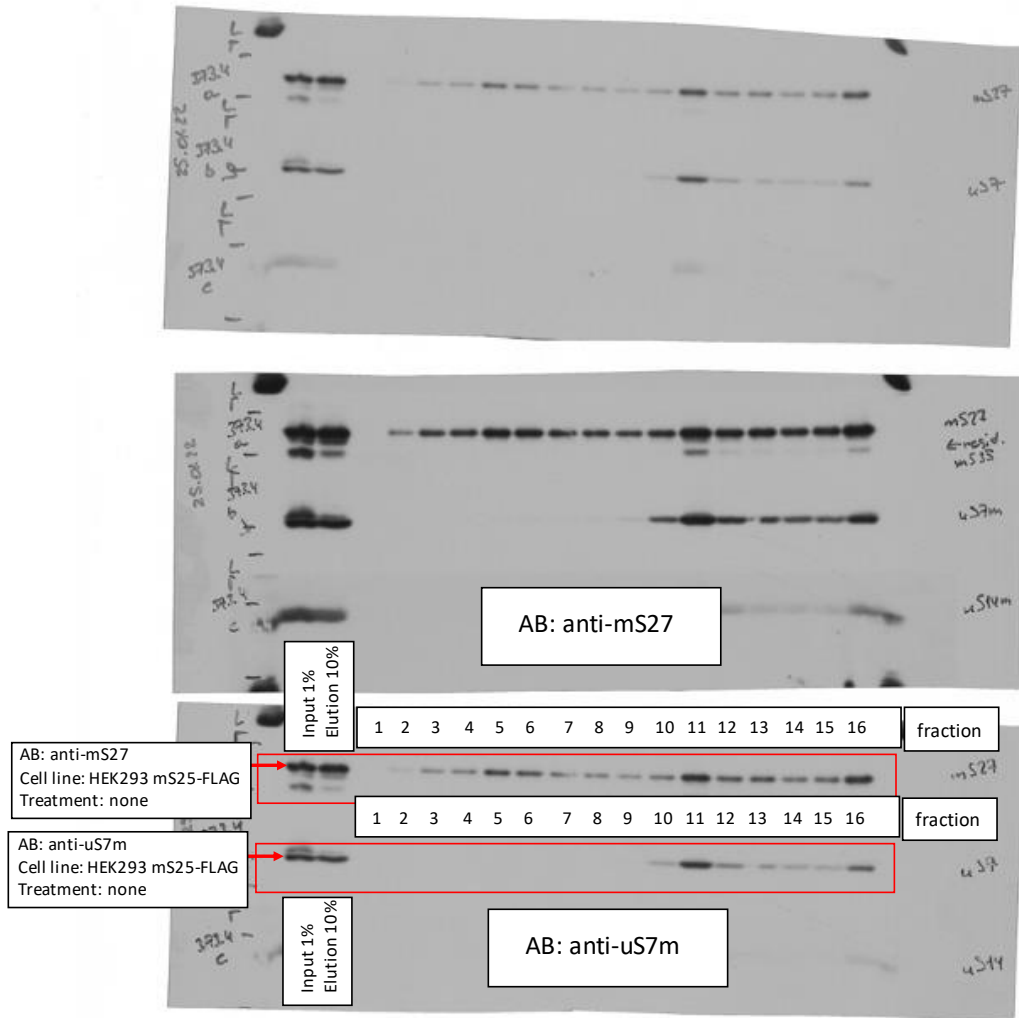
EL#373 mS25-FLAG IP + Gradient

Rotor: SW41 Ti

Gradient: Sucrose 5-30%

Speed: 158.000xg

Time: 15h



Source Data 2_related to Extended Data Fig.3b

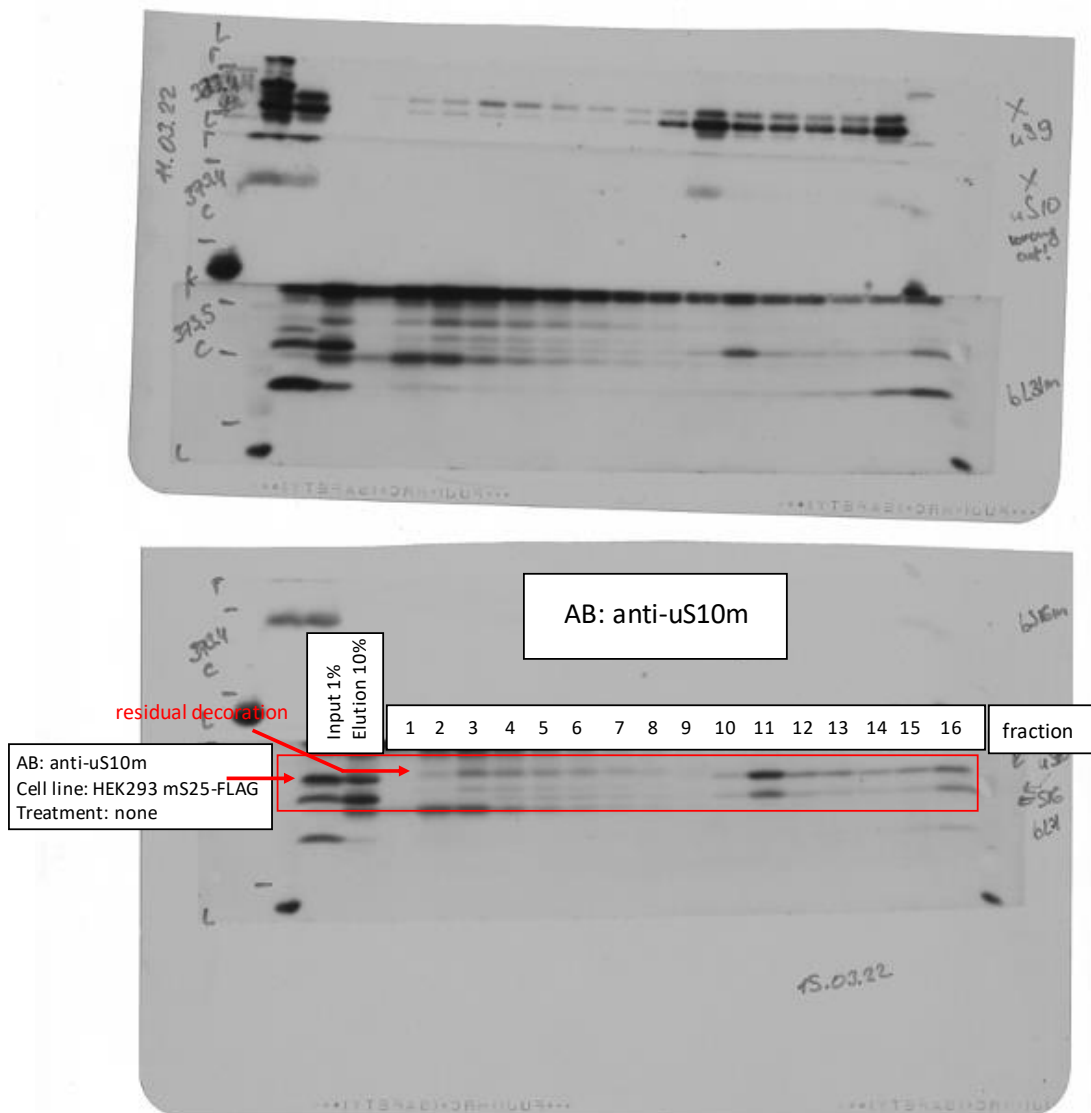
EL#373 mS25-FLAG IP + Gradient

Rotor: SW41 Ti

Gradient: Sucrose 5-30%

Speed: 158.000xg

Time: 15h



Source Data 2_related to Extended Data Fig.3b

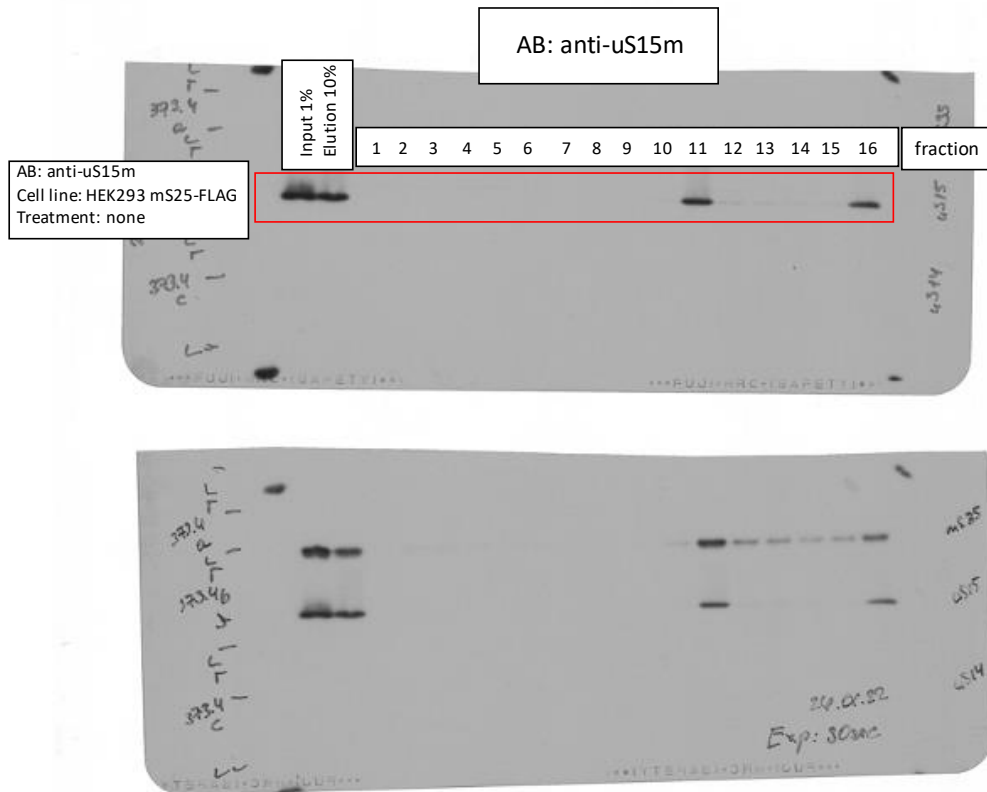
EL#373 mS25-FLAG IP + Gradient

Rotor: SW41 Ti

Gradient: Sucrose 5-30%

Speed: 158.000xg

Time: 15h



Source Data 2_related to Extended Data Fig.3b

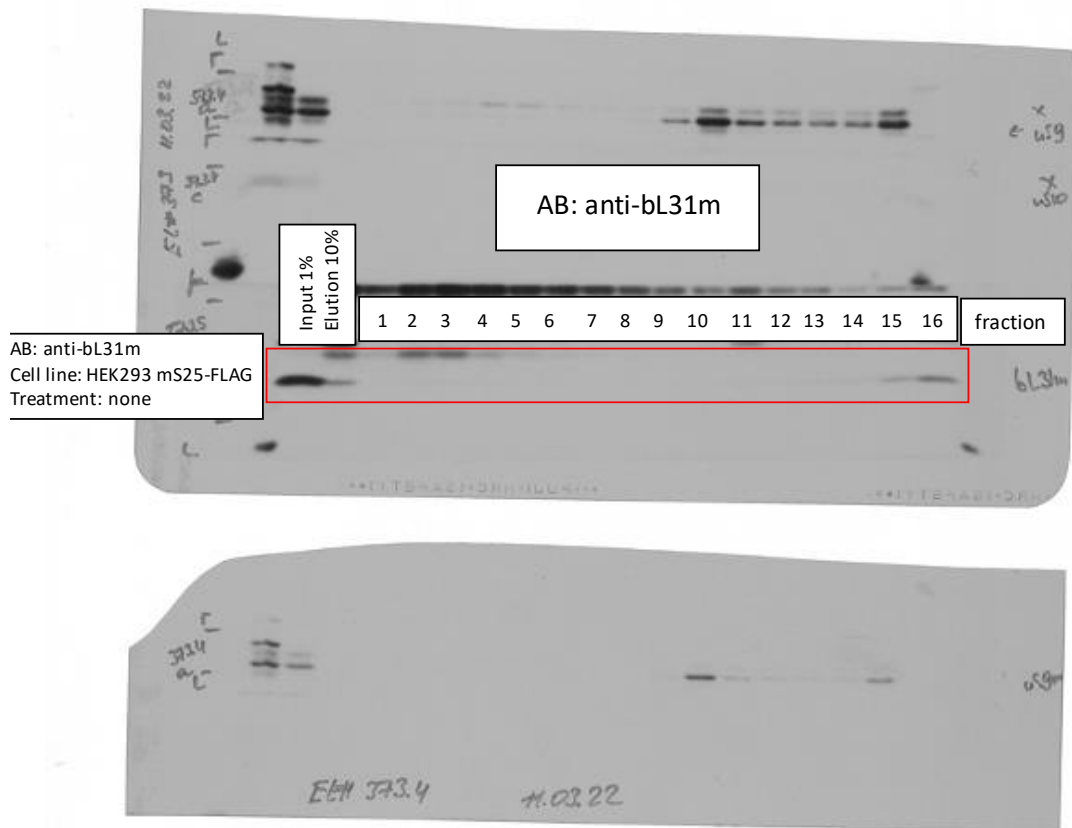
EL#373 mS25-FLAG IP + Gradient

Rotor: SW41 Ti

Gradient: Sucrose 5-30%

Speed: 158.000xg

Time: 15h



Source Data 2_related to Extended Data Fig.3b

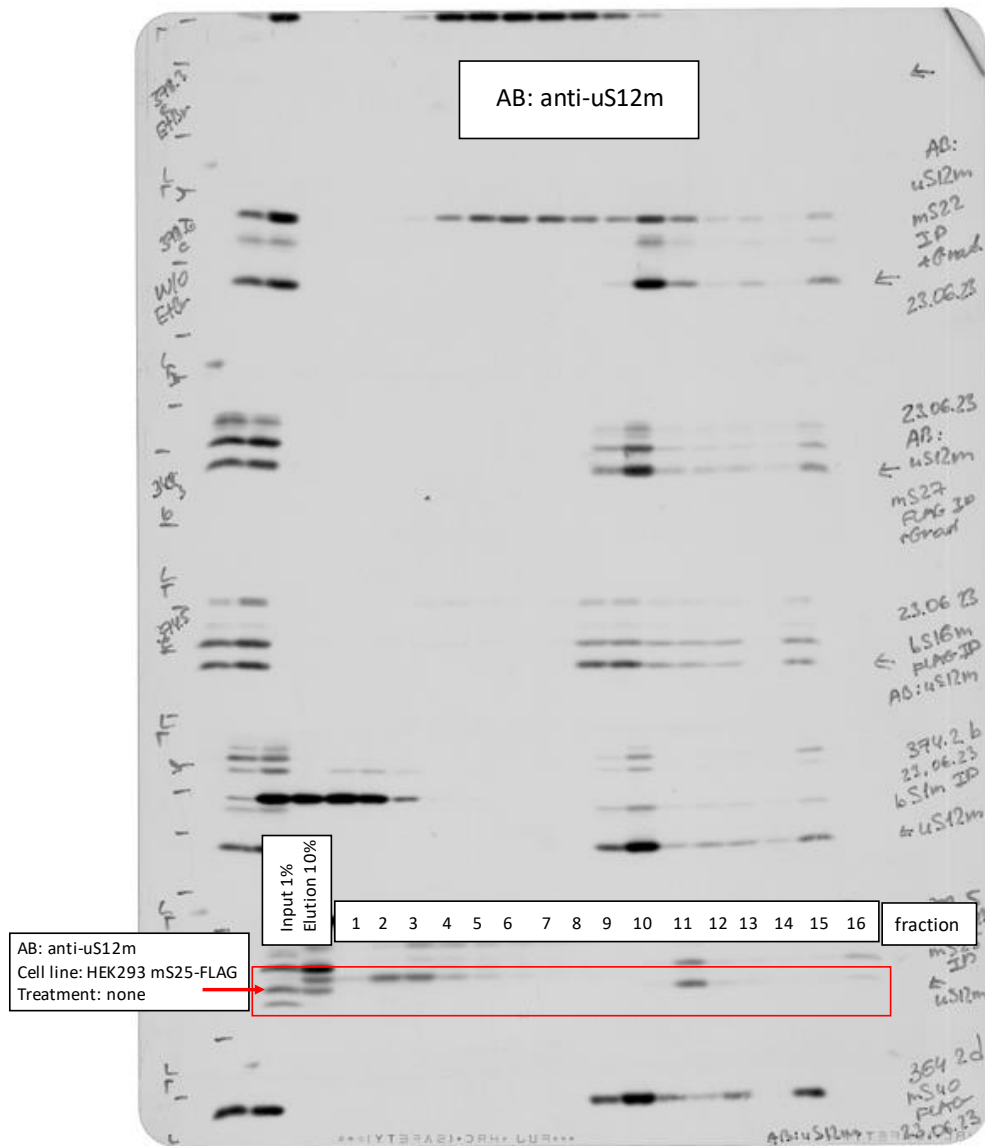
EL#373 mS25-FLAG IP + Gradient

Rotor: SW41 Ti

Gradient: Sucrose 5-30%

Speed: 158.000xg

Time: 15h



Source Data 2_related to Extended Data Fig.3c

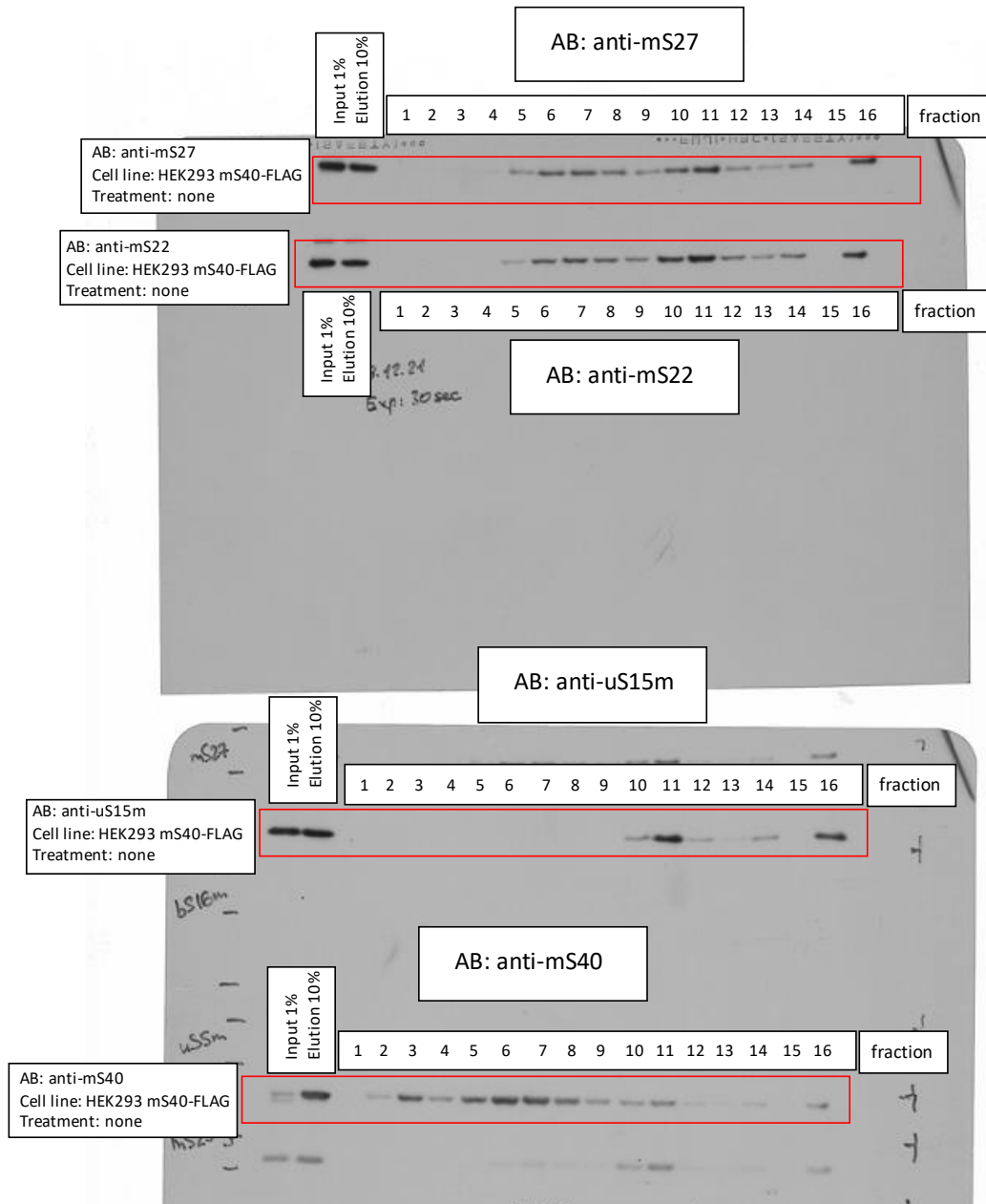
EL#364 mS40-FLAG IP + Gradient

Rotor: SW41 Ti

Gradient: Sucrose 5-30%

Speed: 158.000xg

Time: 15h



Source Data 2_related to Extended Data Fig.3c

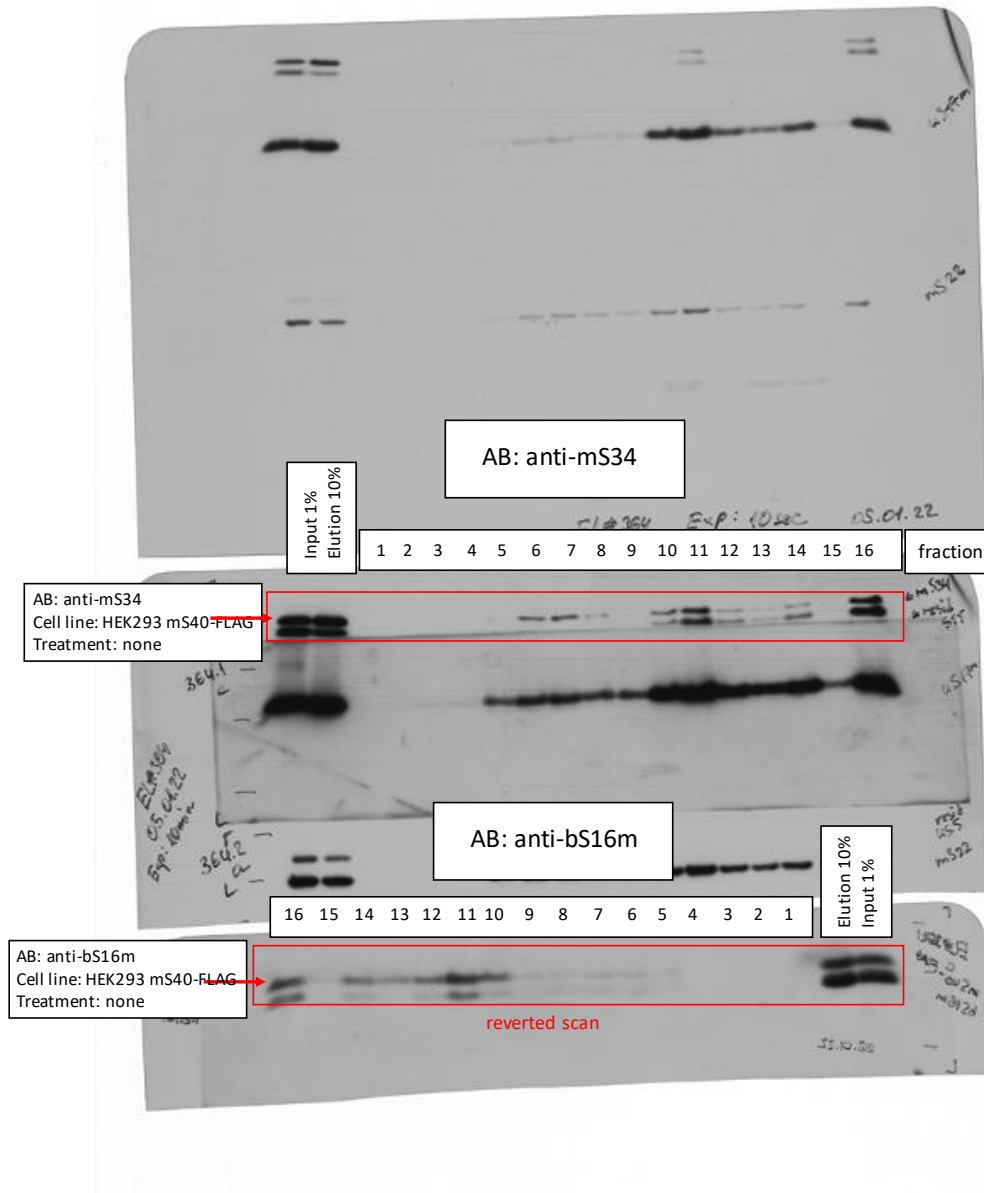
EL#364 mS40-FLAG IP + Gradient

Rotor: SW41 Ti

Gradient: Sucrose 5-30%

Speed: 158.000xg

Time: 15h



Source Data 2_related to Extended Data Fig.3c

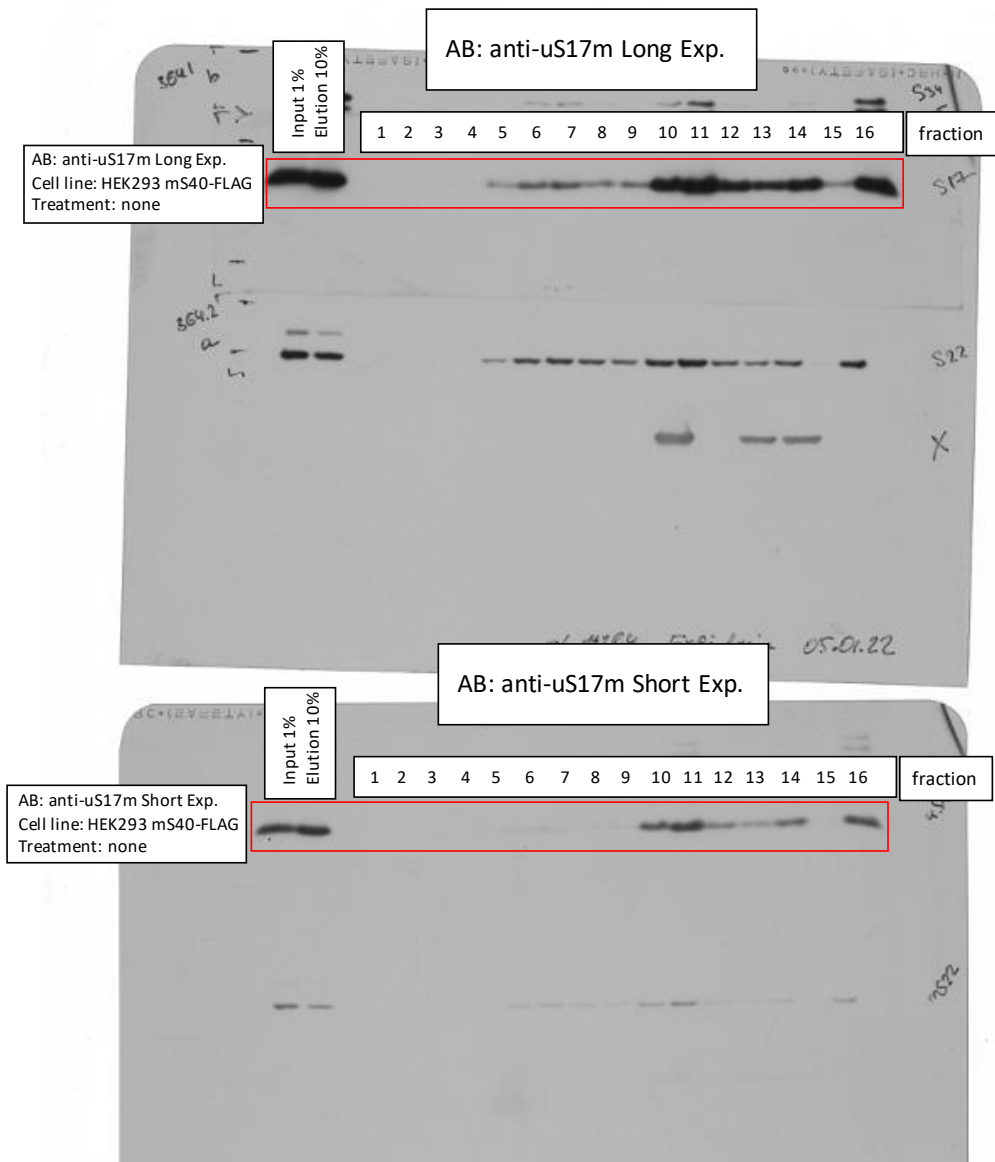
EL#364 mS40-FLAG IP + Gradient

Rotor: SW41 Ti

Gradient: Sucrose 5-30%

Speed: 158.000xg

Time: 15h



Source Data 2_related to Extended Data Fig.3c

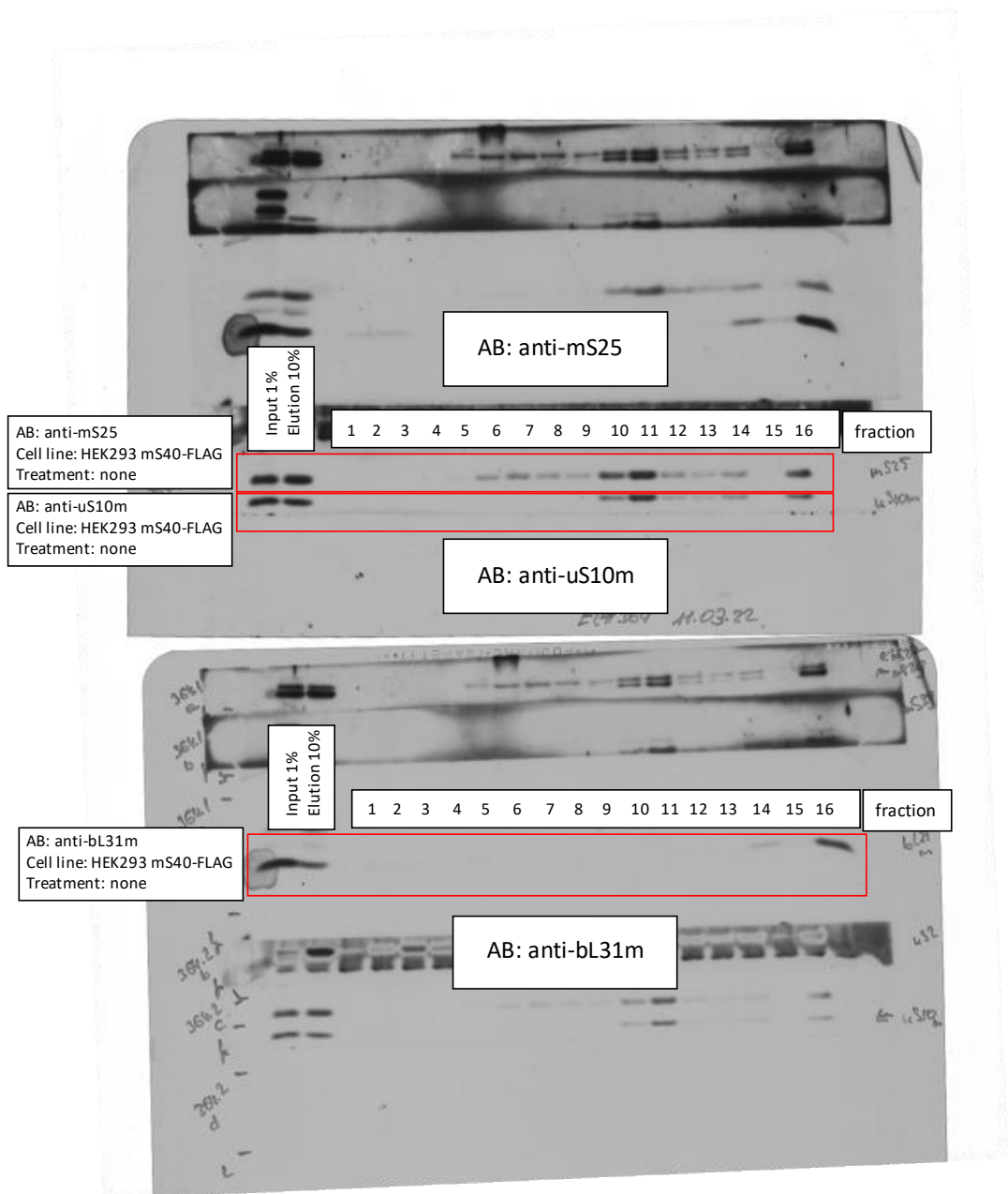
EL#364 mS40-FLAG IP + Gradient

Rotor: SW41 Ti

Gradient: Sucrose 5-30%

Speed: 158.000xg

Time: 15h



Source Data 2_related to Extended Data Fig.3c

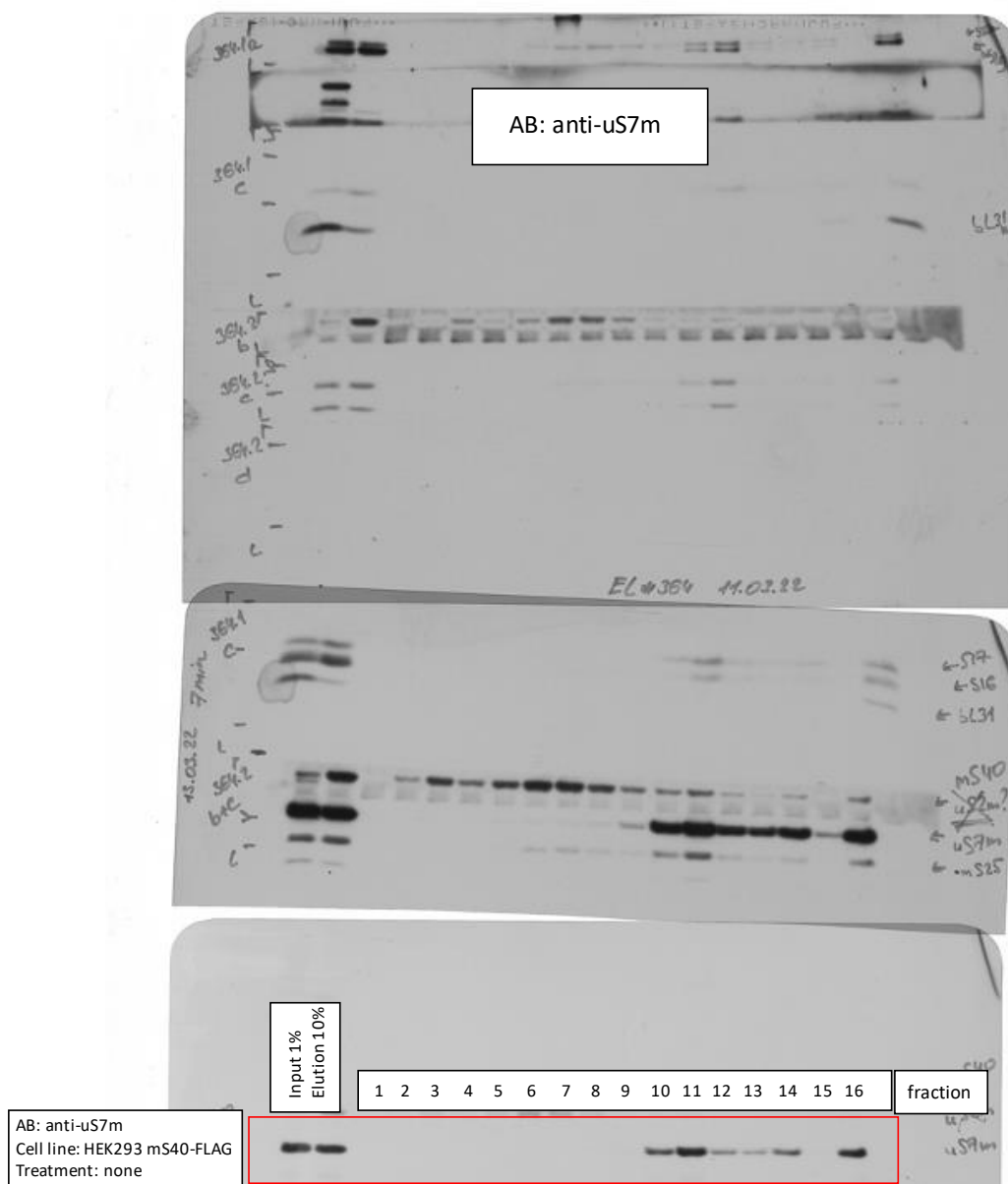
EL#364 mS40-FLAG IP + Gradient

Rotor: SW41 Ti

Gradient: Sucrose 5-30%

Speed: 158.000xg

Time: 15h



Source Data 2_related to Extended Data Fig.3c

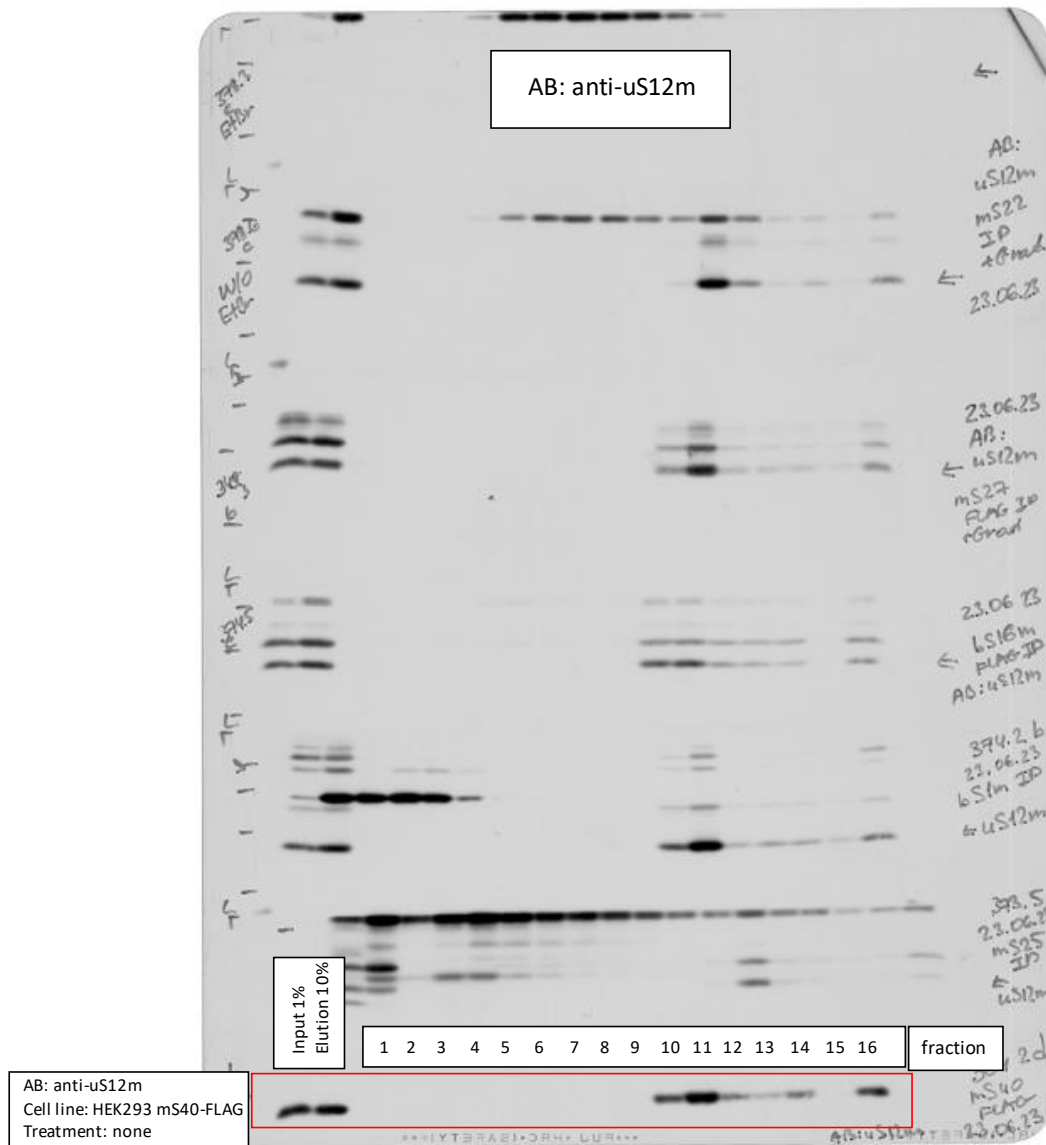
EL#364 mS40-FLAG IP + Gradient

Rotor: SW41 Ti

Gradient: Sucrose 5-30%

Speed: 158.000xg

Time: 15h



Source Data 2_related to Extended Data Fig.3d

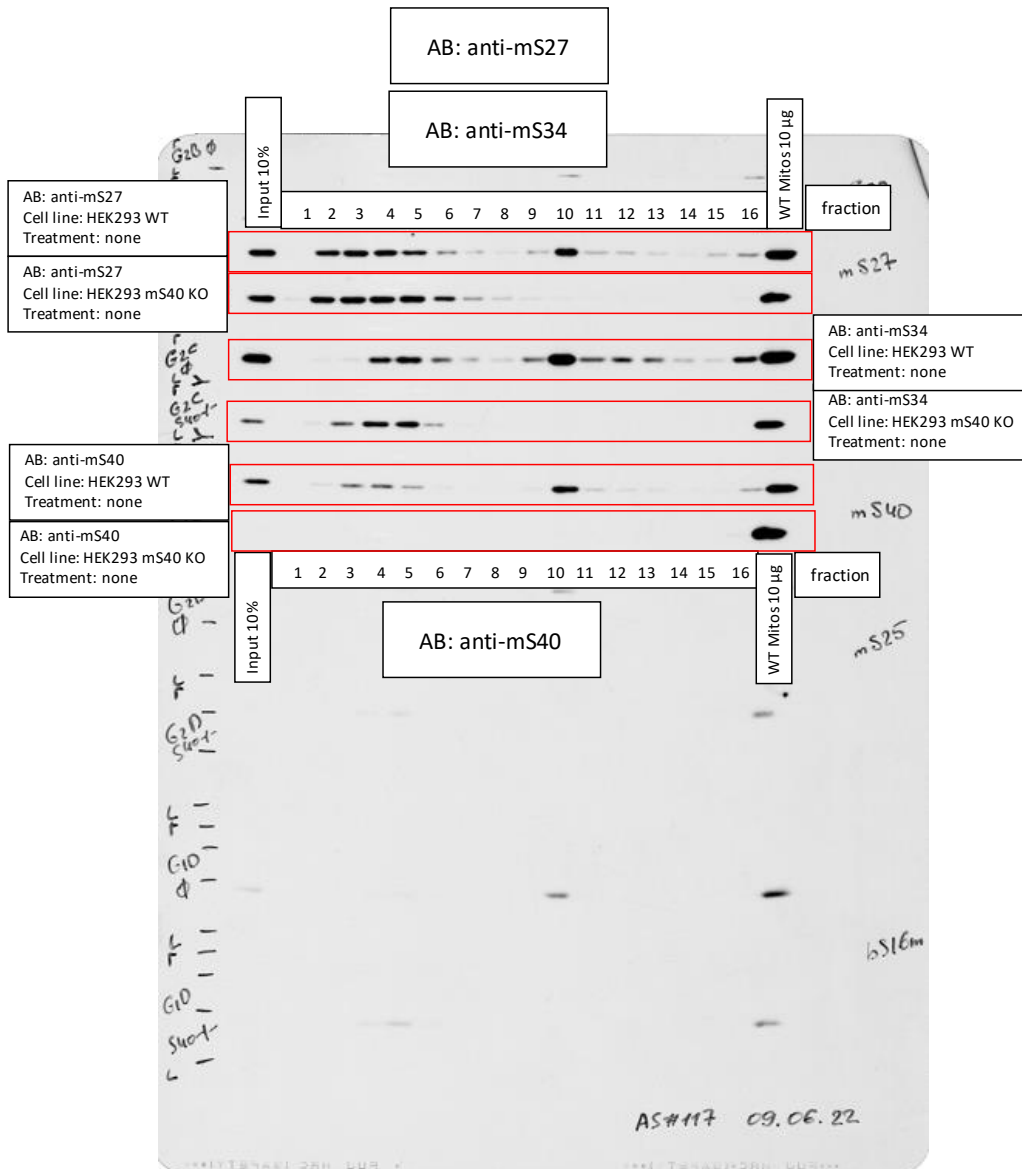
AS#117 mS40 KO + Gradient

Rotor: SW41 Ti

Gradient: Sucrose 5-30%

Speed: 158.000xg

Time: 15h



Source Data 2_related to Extended Data Fig.3d

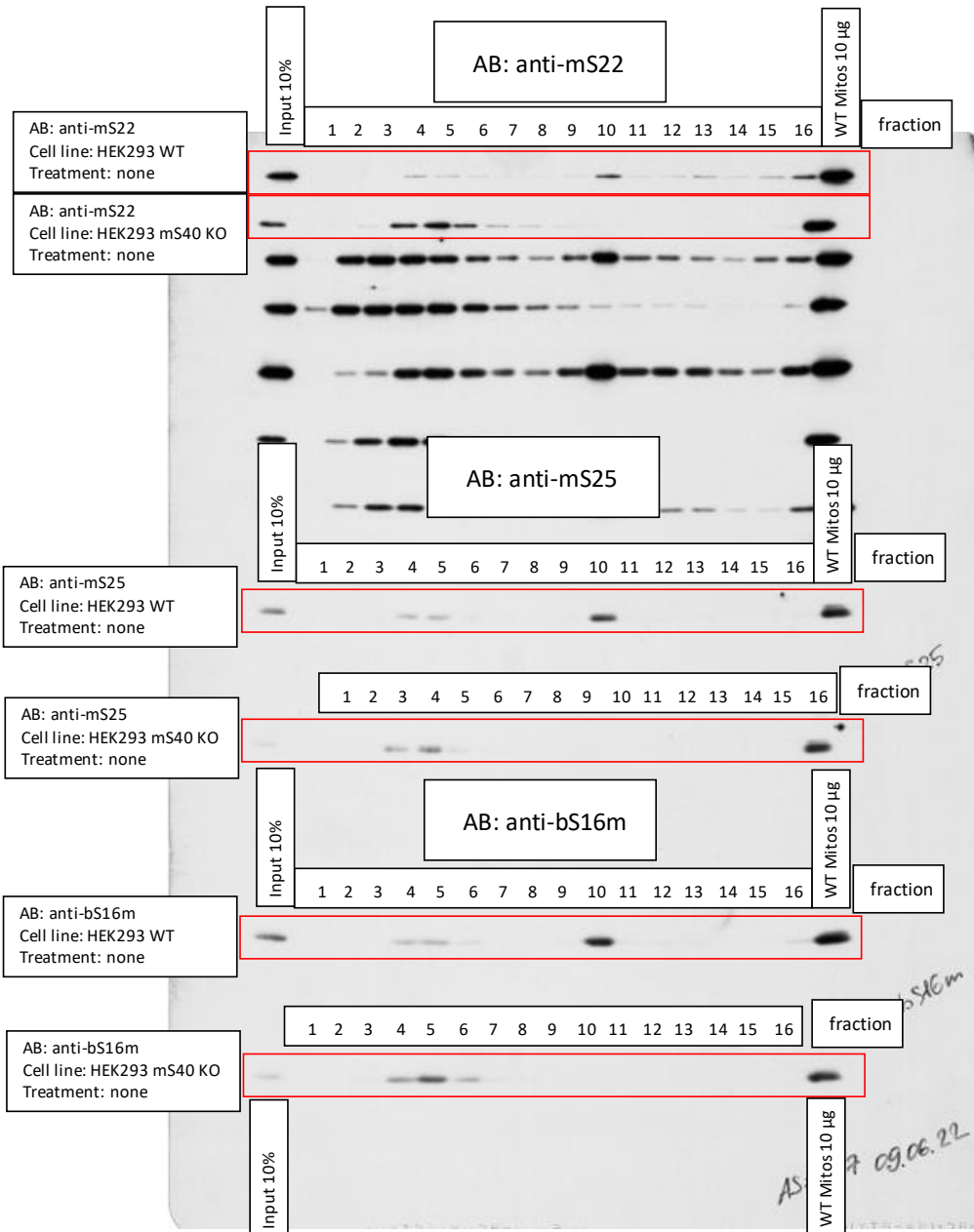
AS#117 mS40 KO + Gradient

Rotor: SW41 Ti

Gradient: Sucrose 5-30%

Speed: 158.000xg

Time: 15h



Source Data 2_related to Extended Data Fig.3d

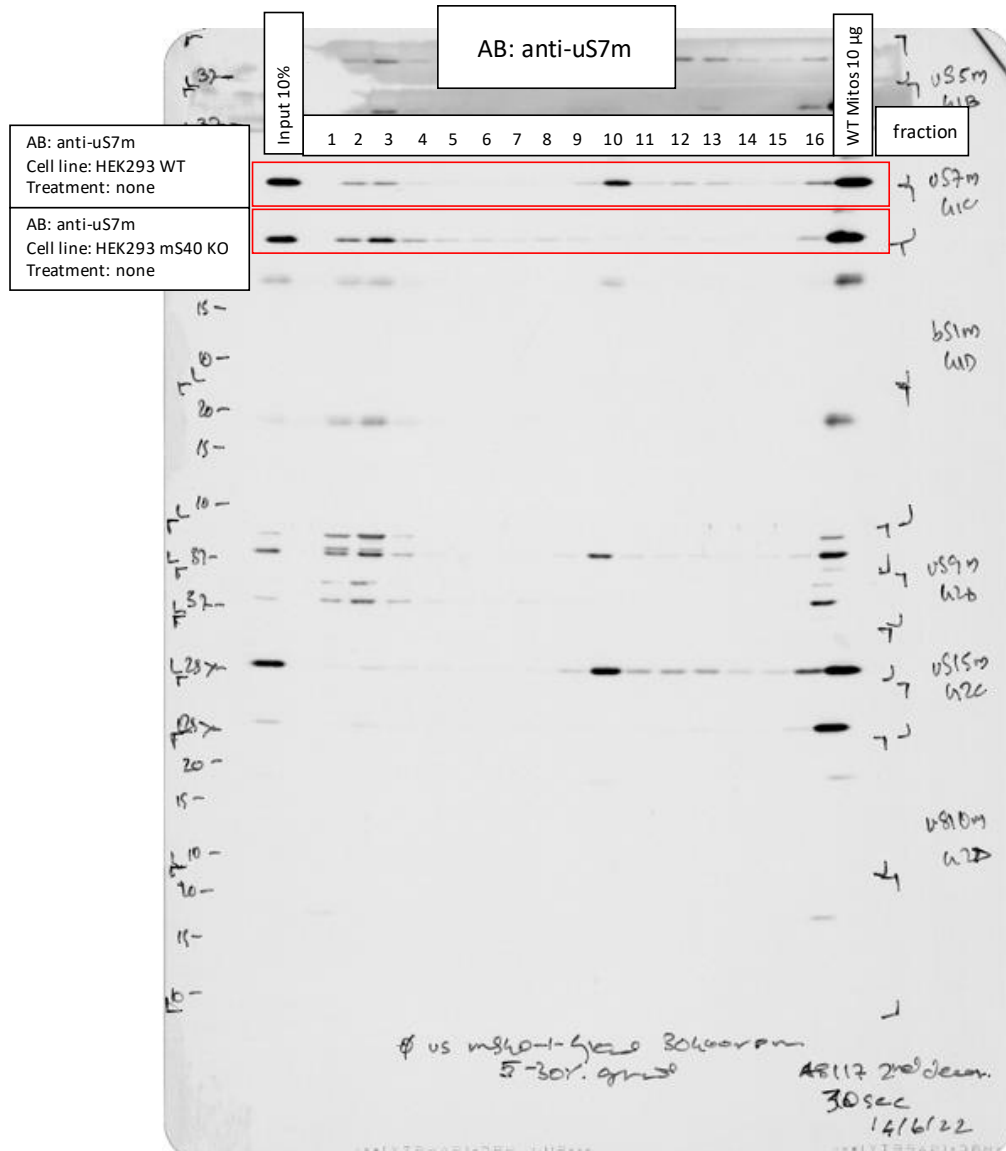
AS#117 mS40 KO + Gradient

Rotor: SW41 Ti

Gradient: Sucrose 5-30%

Speed: 158.000xg

Time: 15h



Source Data 2_related to Extended Data Fig.3d

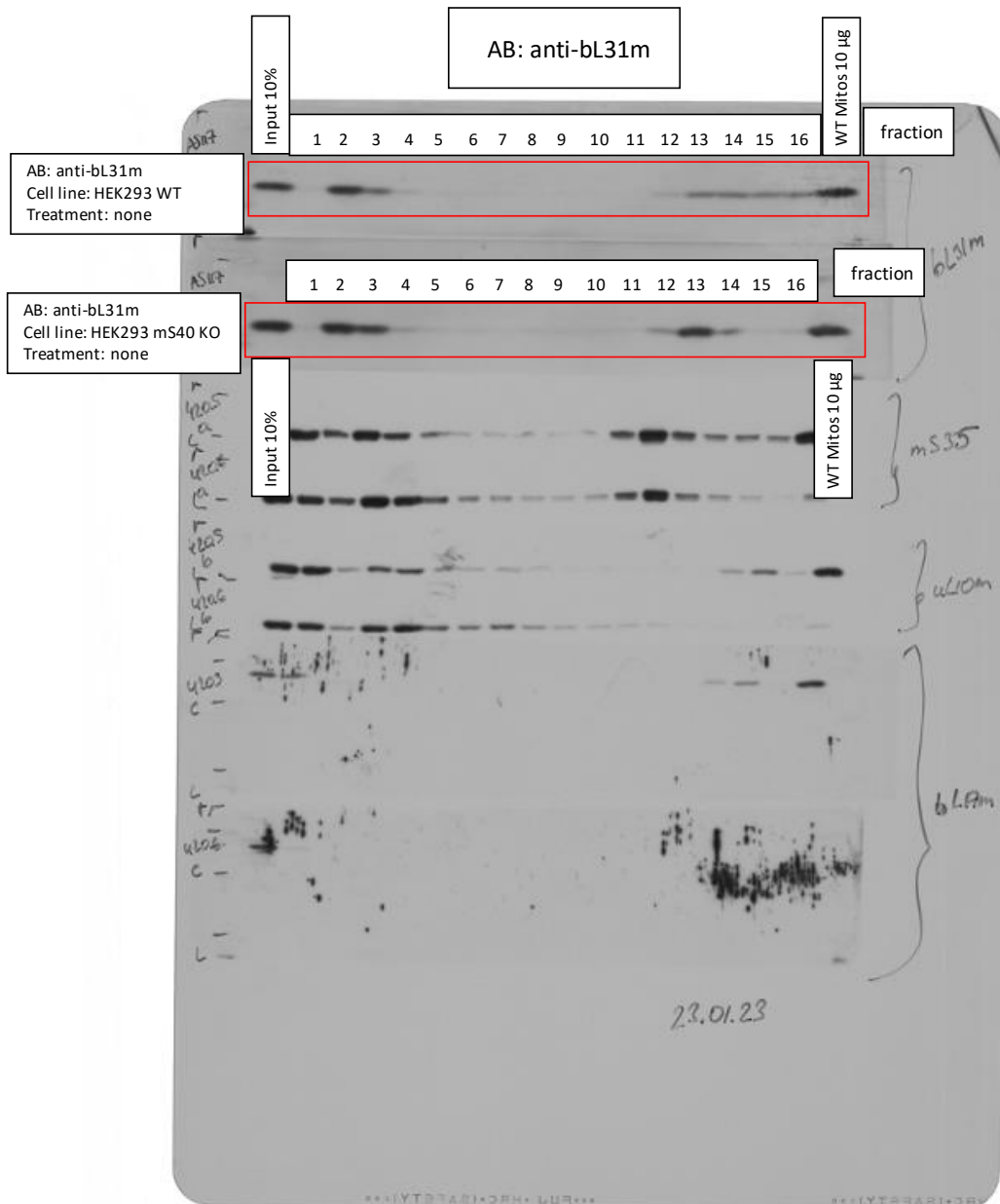
AS#117 mS40 KO + Gradient

Rotor: SW41 Ti

Gradient: Sucrose 5-30%

Speed: 158.000xg

Time: 15h



Source Data 2_related to Extended Data Fig.3e

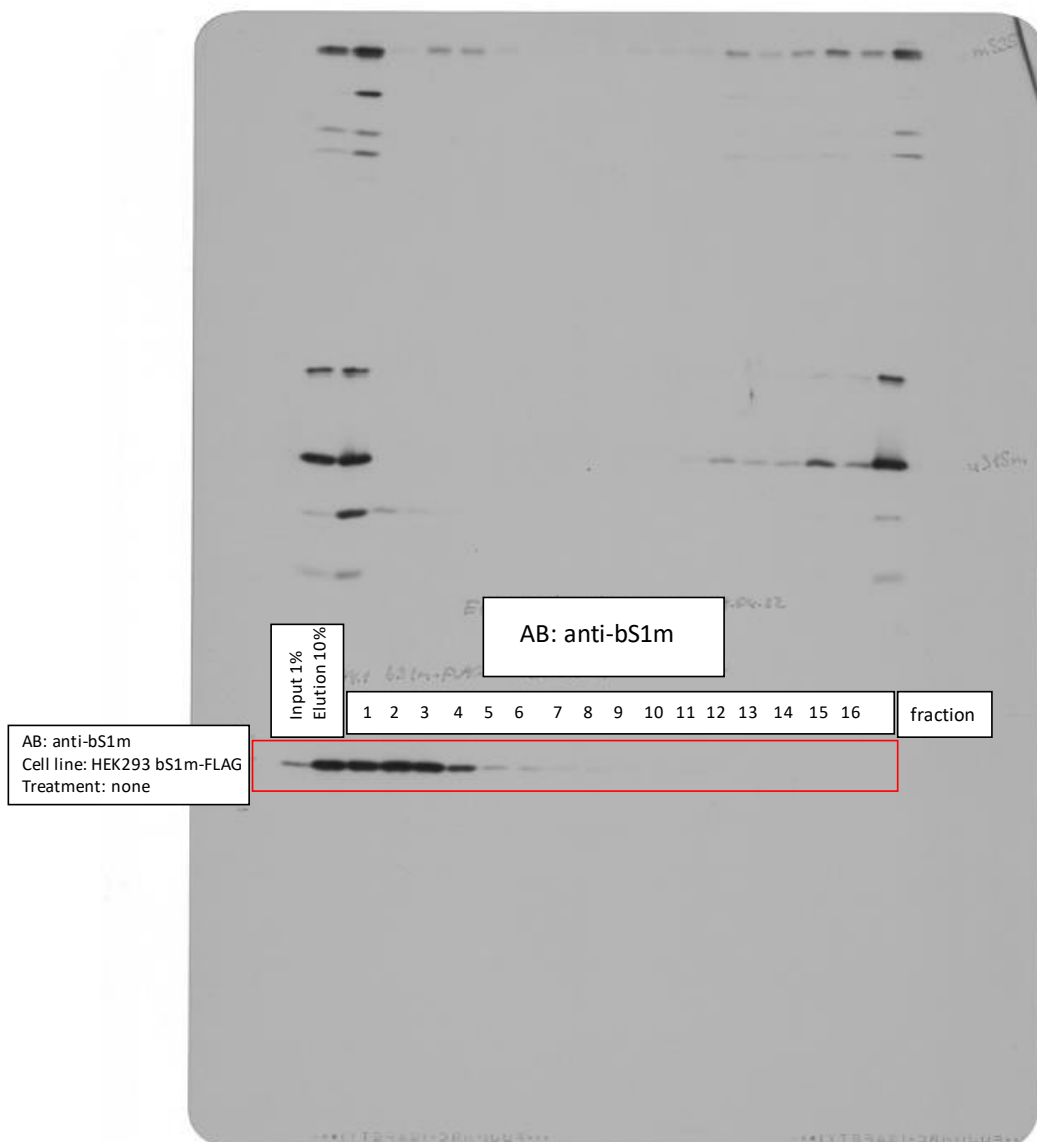
EL#374.1-3 bS1m-FLAG IP + Gradient

Rotor: SW41 Ti

Gradient: Sucrose 5-30%

Speed: 158.000xg

Time: 15h



Source Data 2_related to Extended Data Fig.3e

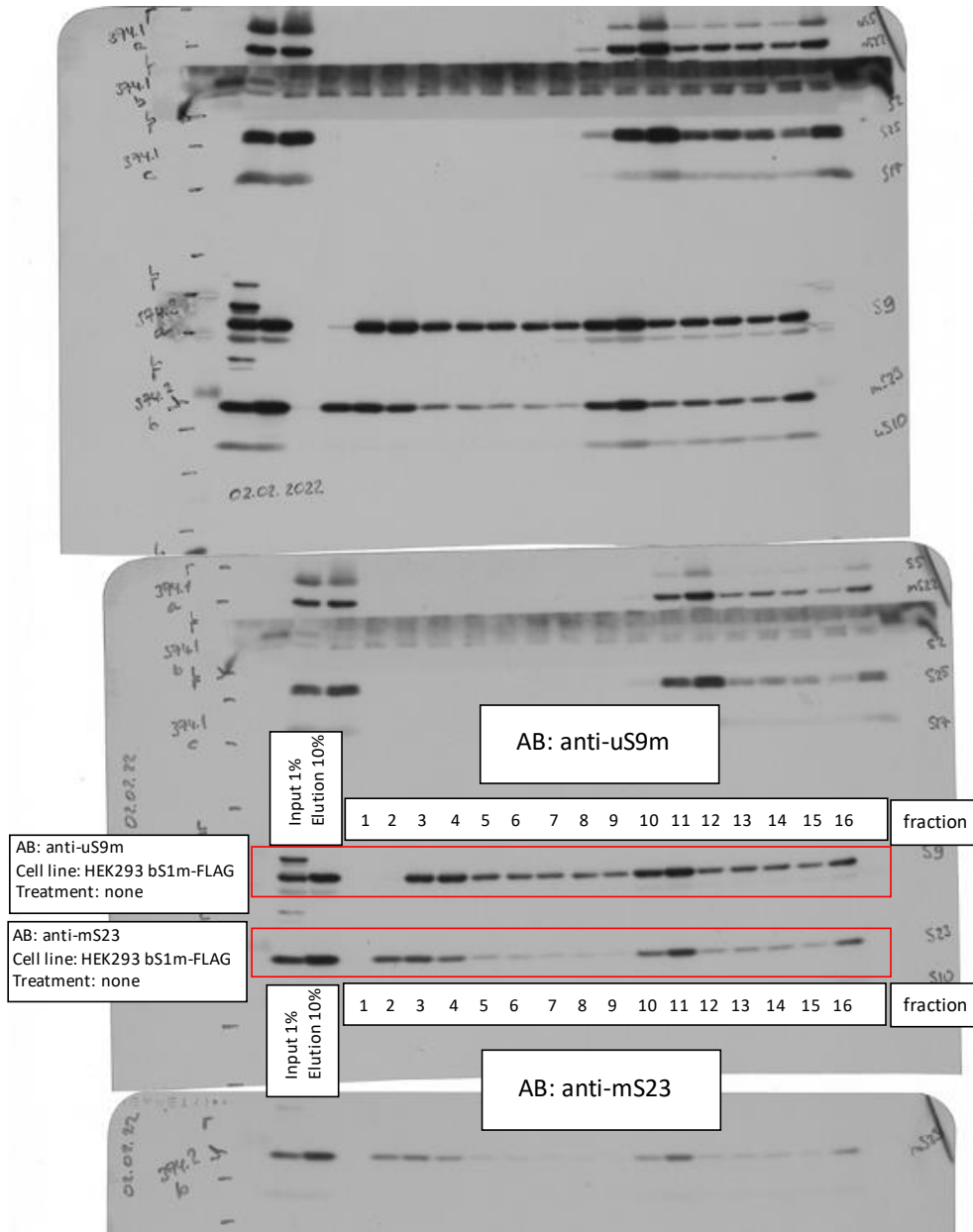
EL#374.1-3 bS1m-FLAG IP + Gradient

Rotor: SW41 Ti

Gradient: Sucrose 5-30%

Speed: 158.000xg

Time: 15h



Source Data 2_related to Extended Data Fig.3e

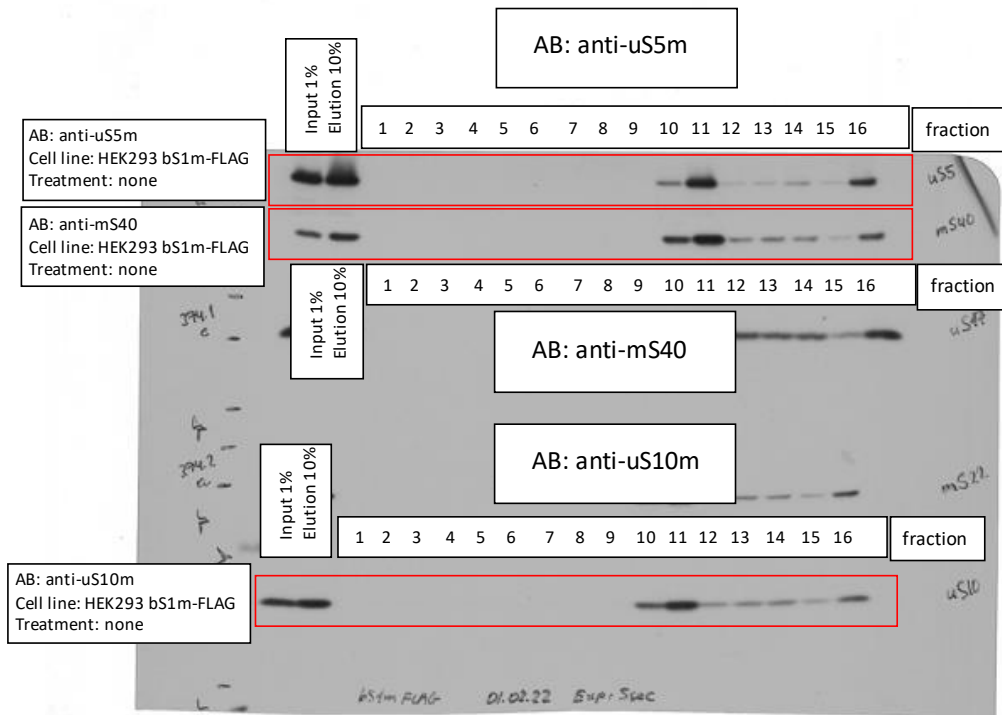
EL#374.1-3 bS1m-FLAG IP + Gradient

Rotor: SW41 Ti

Gradient: Sucrose 5-30%

Speed: 158.000xg

Time: 15h



Source Data 2_related to Extended Data Fig.3e

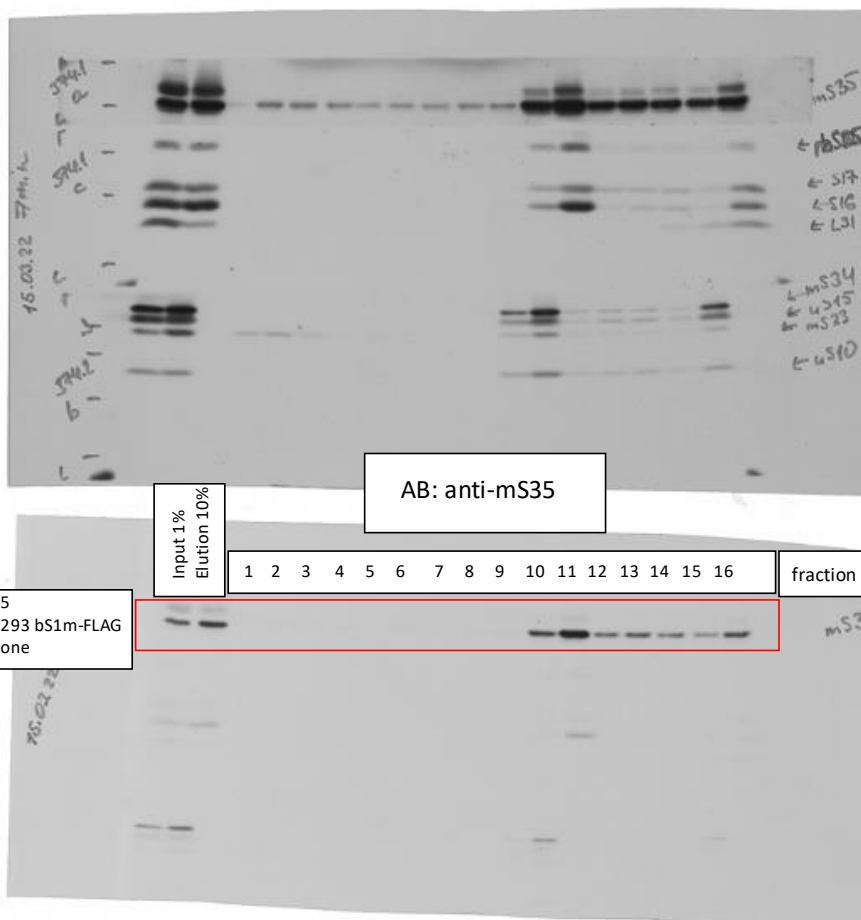
EL#374.1-3 bS1m-FLAG IP + Gradient

Rotor: SW41 Ti

Gradient: Sucrose 5-30%

Speed: 158.000xg

Time: 15h



Source Data 2_related to Extended Data Fig.3e

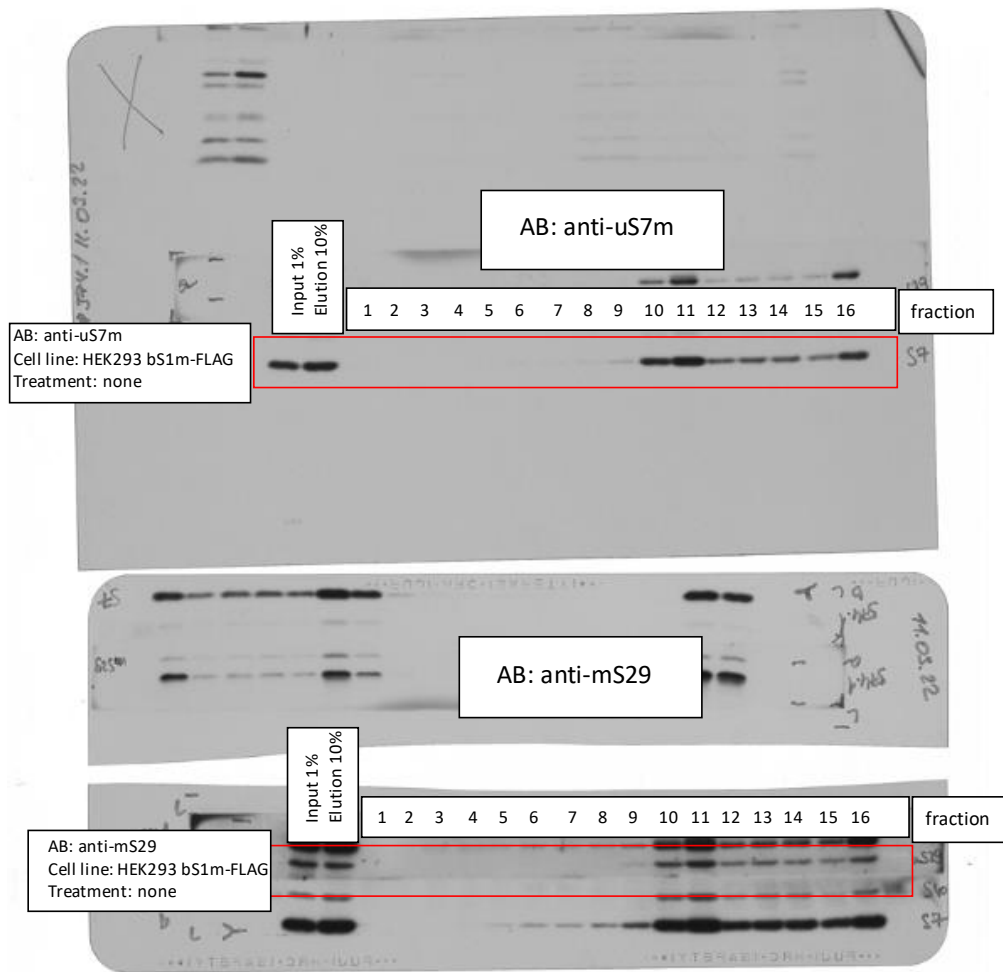
EL#374.1-3 bS1m-FLAG IP + Gradient

Rotor: SW41 Ti

Gradient: Sucrose 5-30%

Speed: 158.000xg

Time: 15h



Source Data 2_related to Extended Data Fig.3e

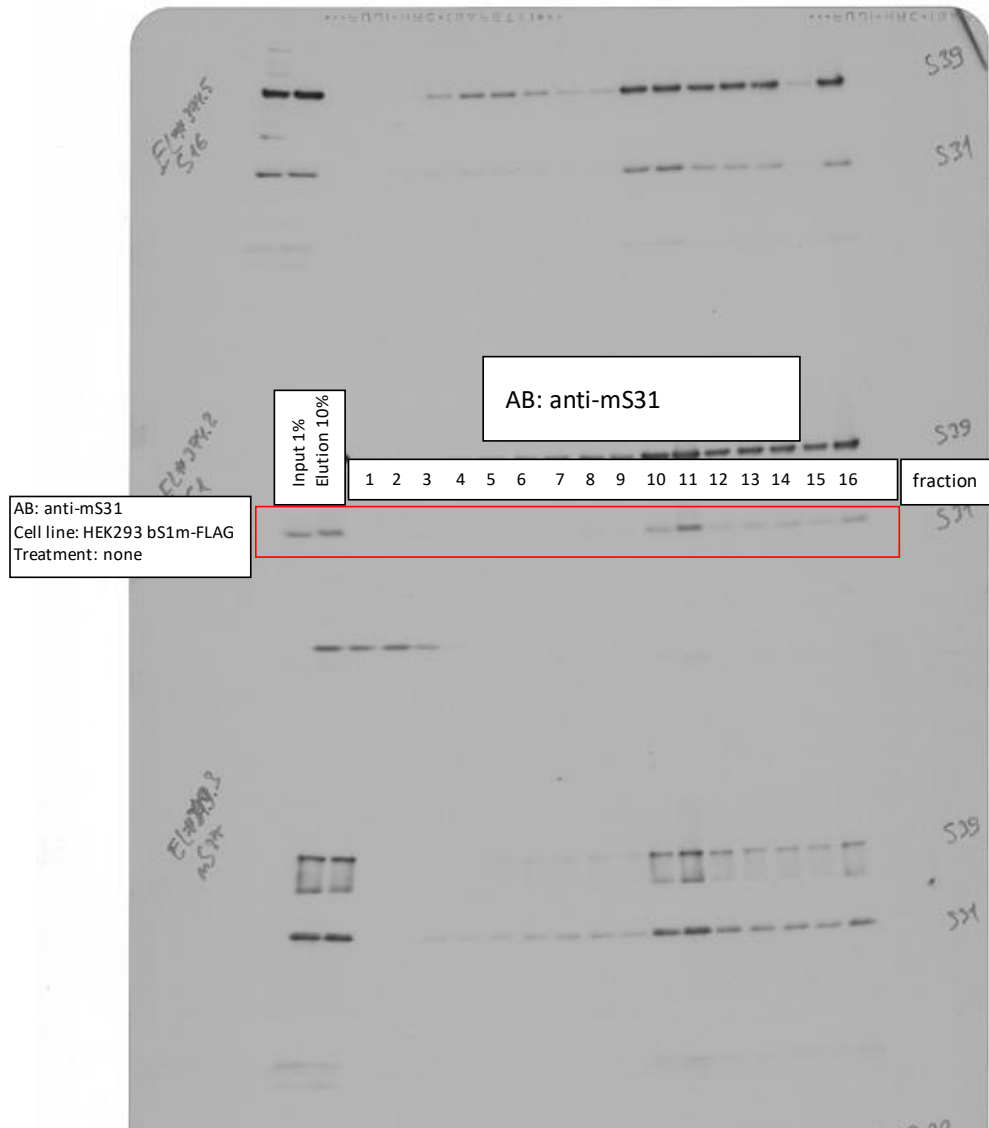
EL#374.1-3 bS1m-FLAG IP + Gradient

Rotor: SW41 Ti

Gradient: Sucrose 5-30%

Speed: 158.000xg

Time: 15h



Source Data 2_related to Extended Data Fig.3e

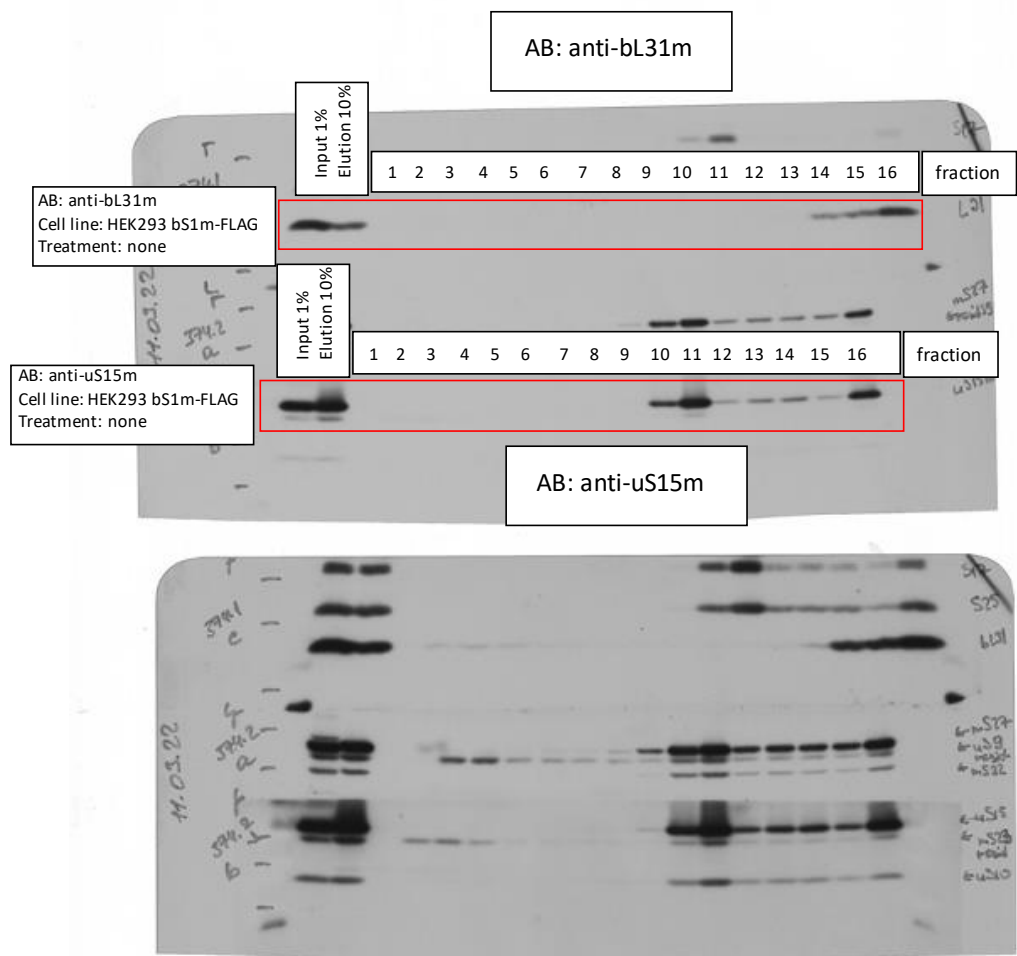
EL#374.1-3 bS1m-FLAG IP + Gradient

Rotor: SW41 Ti

Gradient: Sucrose 5-30%

Speed: 158.000xg

Time: 15h



Source Data 2_related to Extended Data Fig.3f

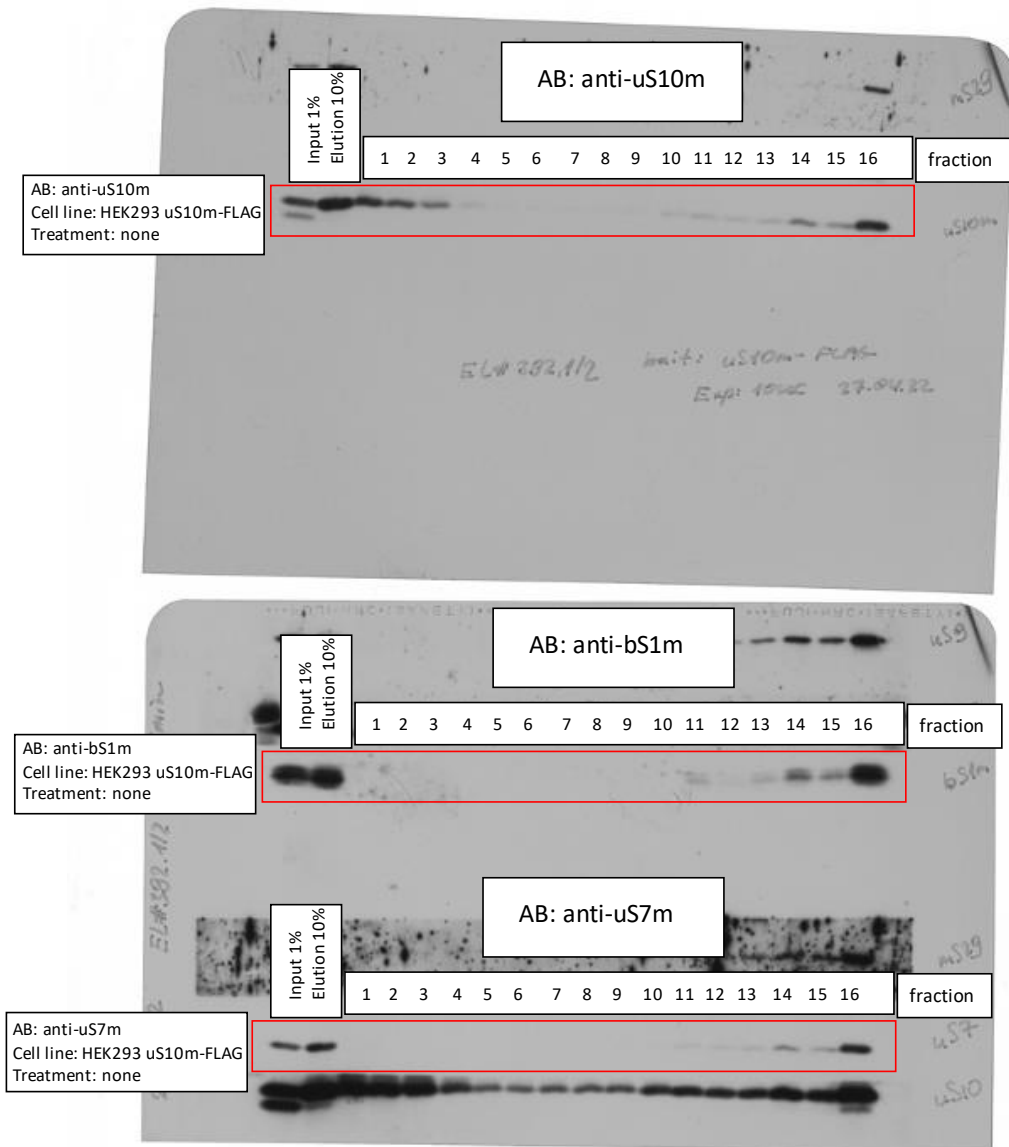
EL#392.1-2 uS10m-FLAG IP + Gradient

Rotor: SW41 Ti

Gradient: Sucrose 5-30%

Speed: 158.000xg

Time: 15h



Source Data 2_related to Extended Data Fig.3f

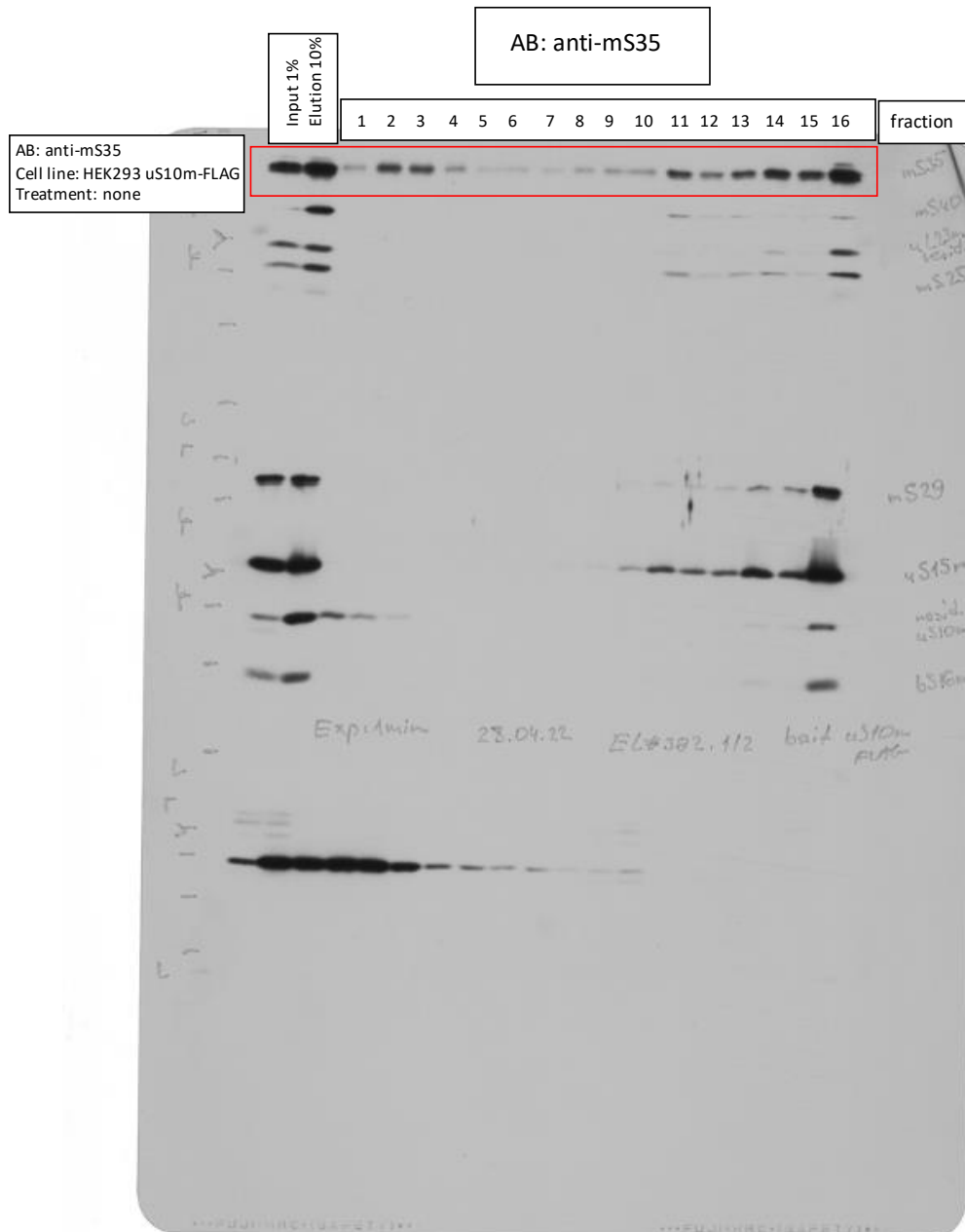
EL#392.1-2 uS10m-FLAG IP + Gradient

Rotor: SW41 Ti

Gradient: Sucrose 5-30%

Speed: 158.000xg

Time: 15h



Source Data 2_related to Extended Data Fig.3f

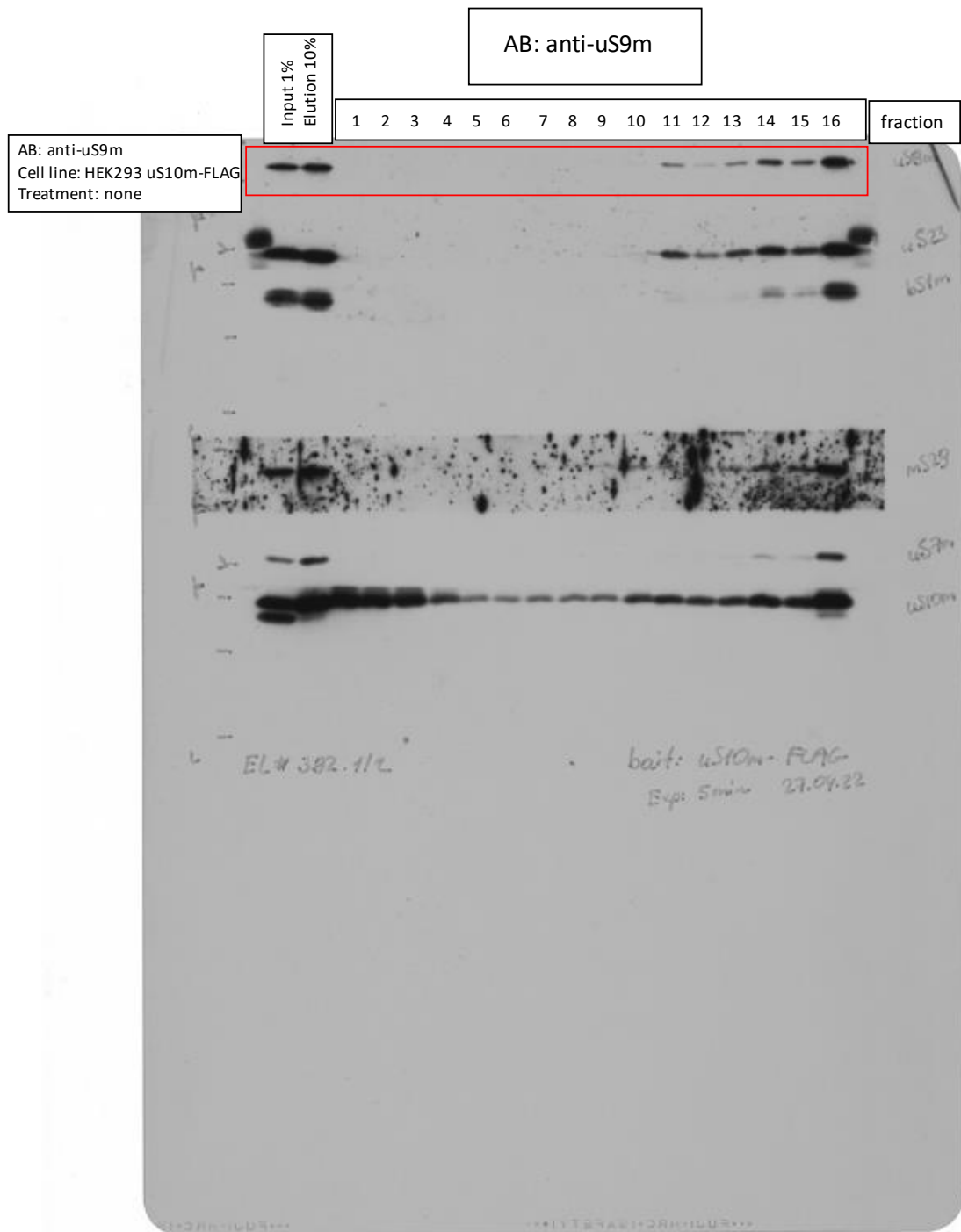
EL#392.1-2 uS10m-FLAG IP + Gradient

Rotor: SW41 Ti

Gradient: Sucrose 5-30%

Speed: 158.000xg

Time: 15h



Source Data 2_related to Extended Data Fig.3f

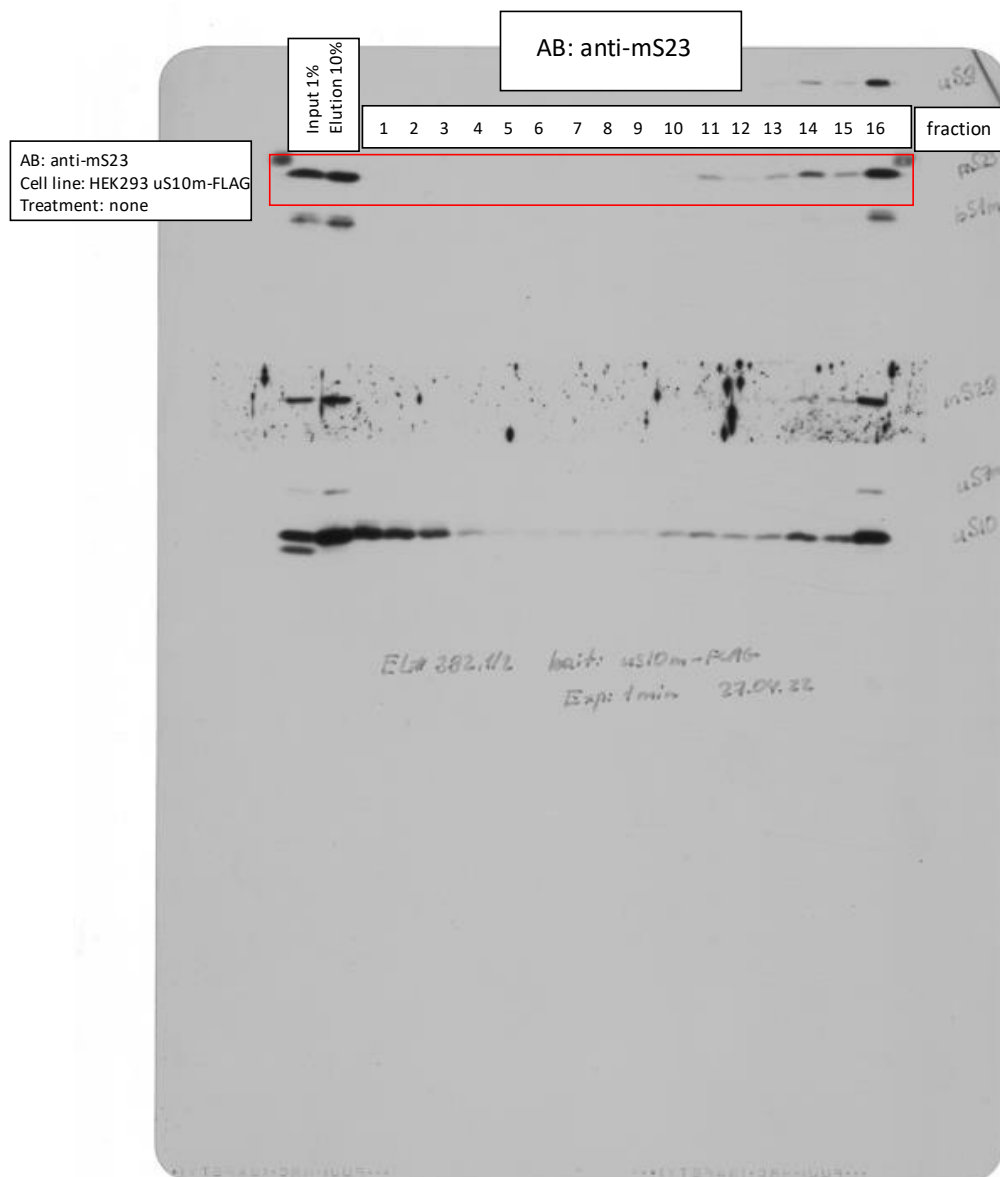
EL#392.1-2 uS10m-FLAG IP + Gradient

Rotor: SW41 Ti

Gradient: Sucrose 5-30%

Speed: 158.000xg

Time: 15h



Source Data 2_related to Extended Data Fig.3f

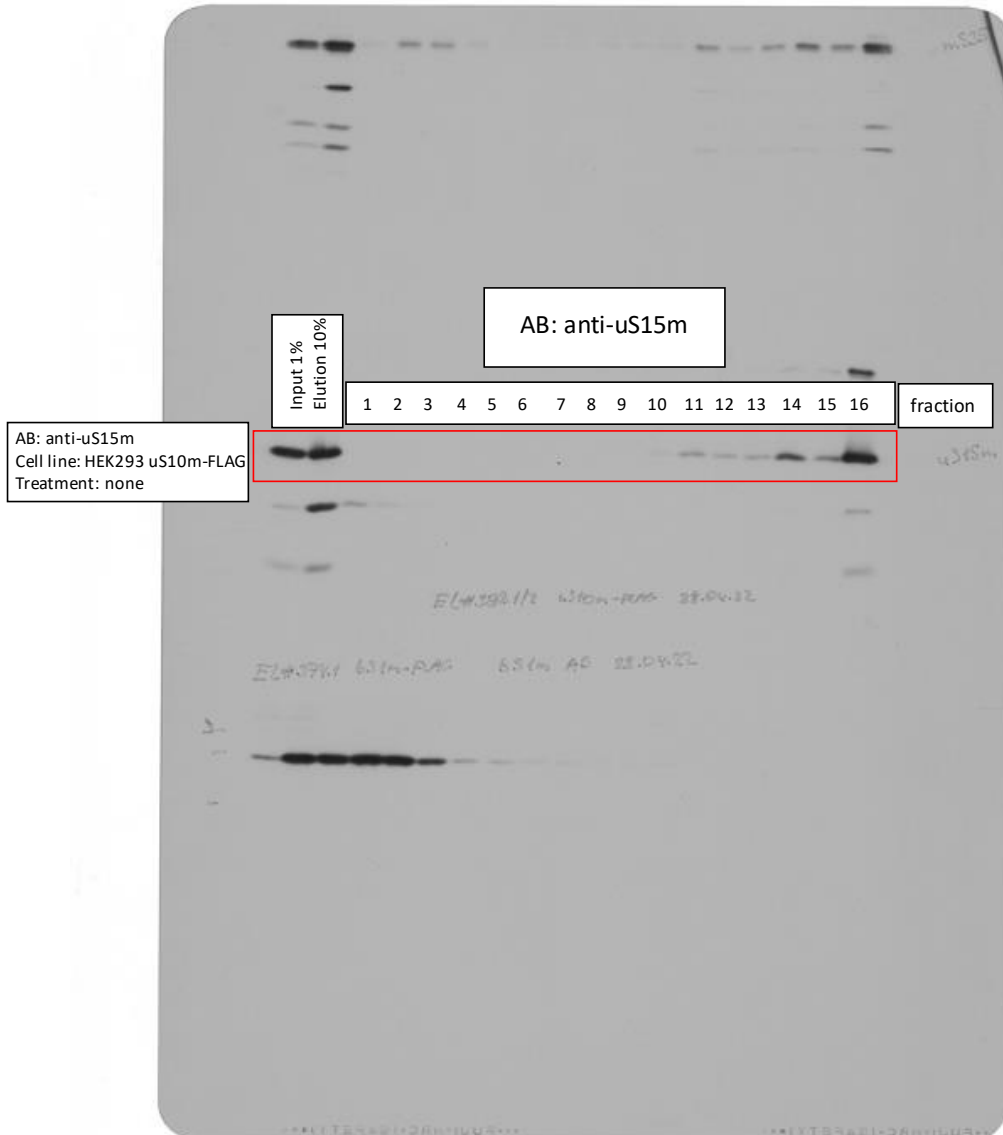
EL#392.1-2 uS10m-FLAG IP + Gradient

Rotor: SW41 Ti

Gradient: Sucrose 5-30%

Speed: 158.000xg

Time: 15h



Source Data 2_related to Extended Data Fig.3f

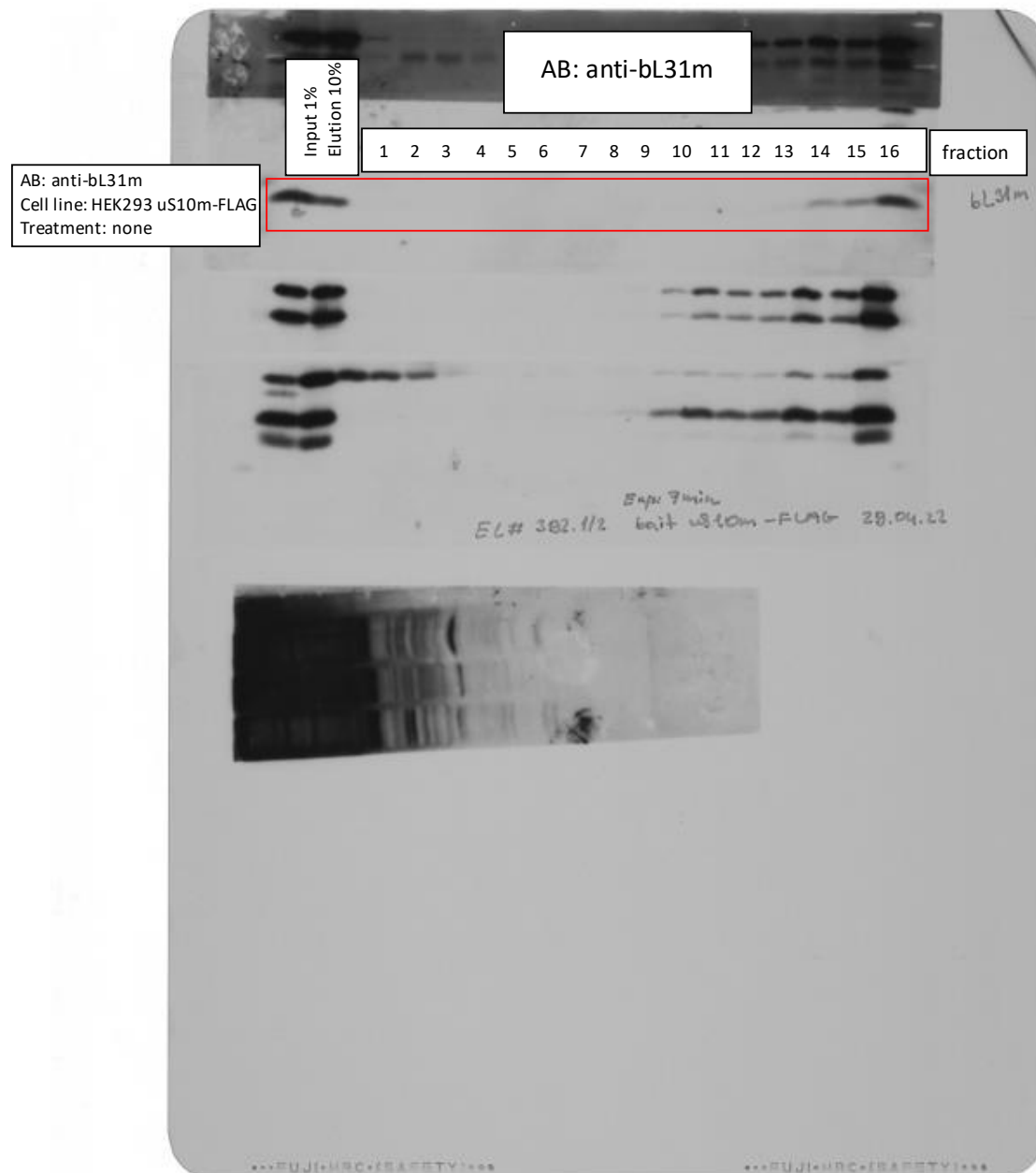
EL#392.1-2 uS10m-FLAG IP + Gradient

Rotor: SW41 Ti

Gradient: Sucrose 5-30%

Speed: 158.000xg

Time: 15h



Source Data 2_related to Extended Data Fig.3f

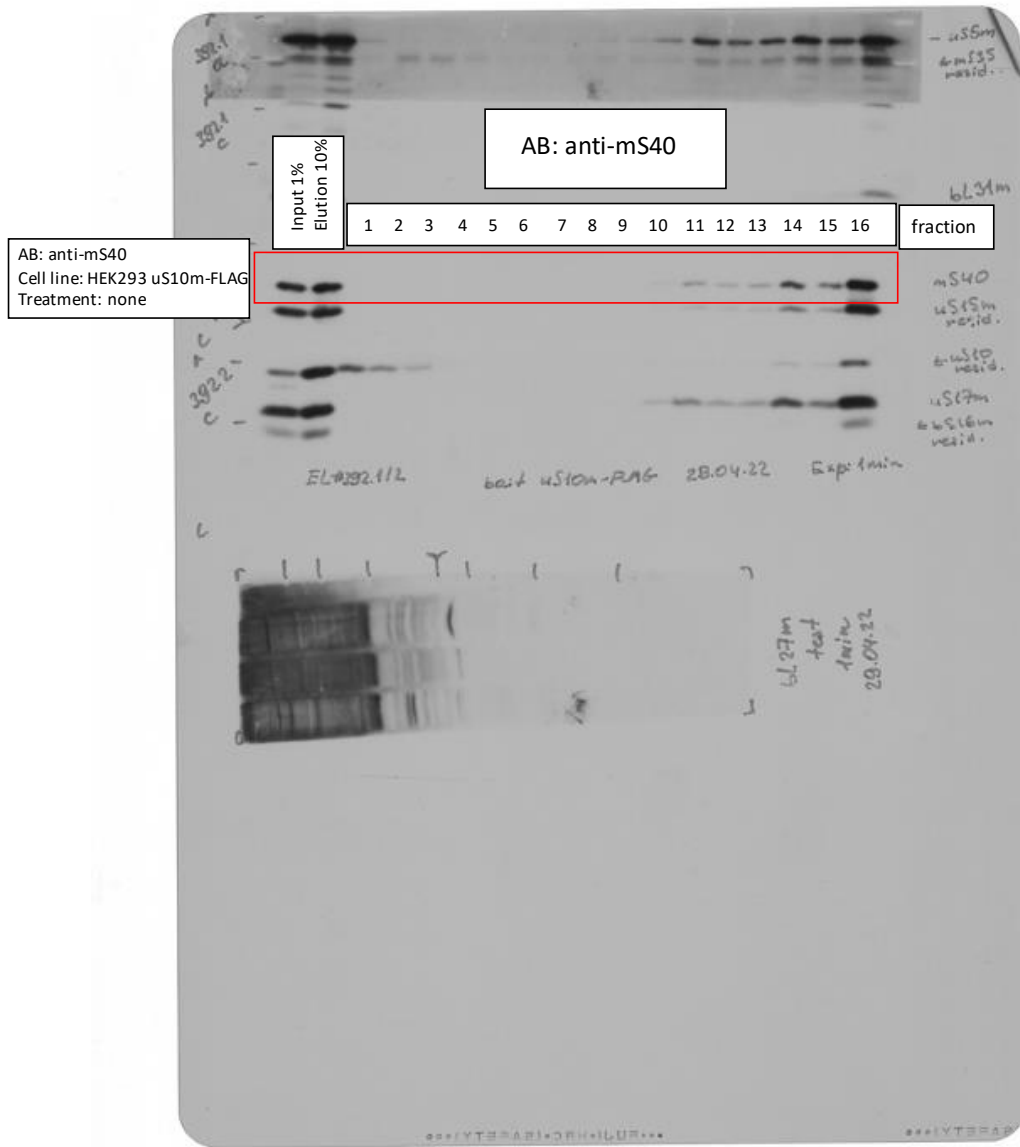
EL#392.1-2 uS10m-FLAG IP + Gradient

Rotor: SW41 Ti

Gradient: Sucrose 5-30%

Speed: 158.000xg

Time: 15h



Source Data 2_related to Extended Data Fig.3f

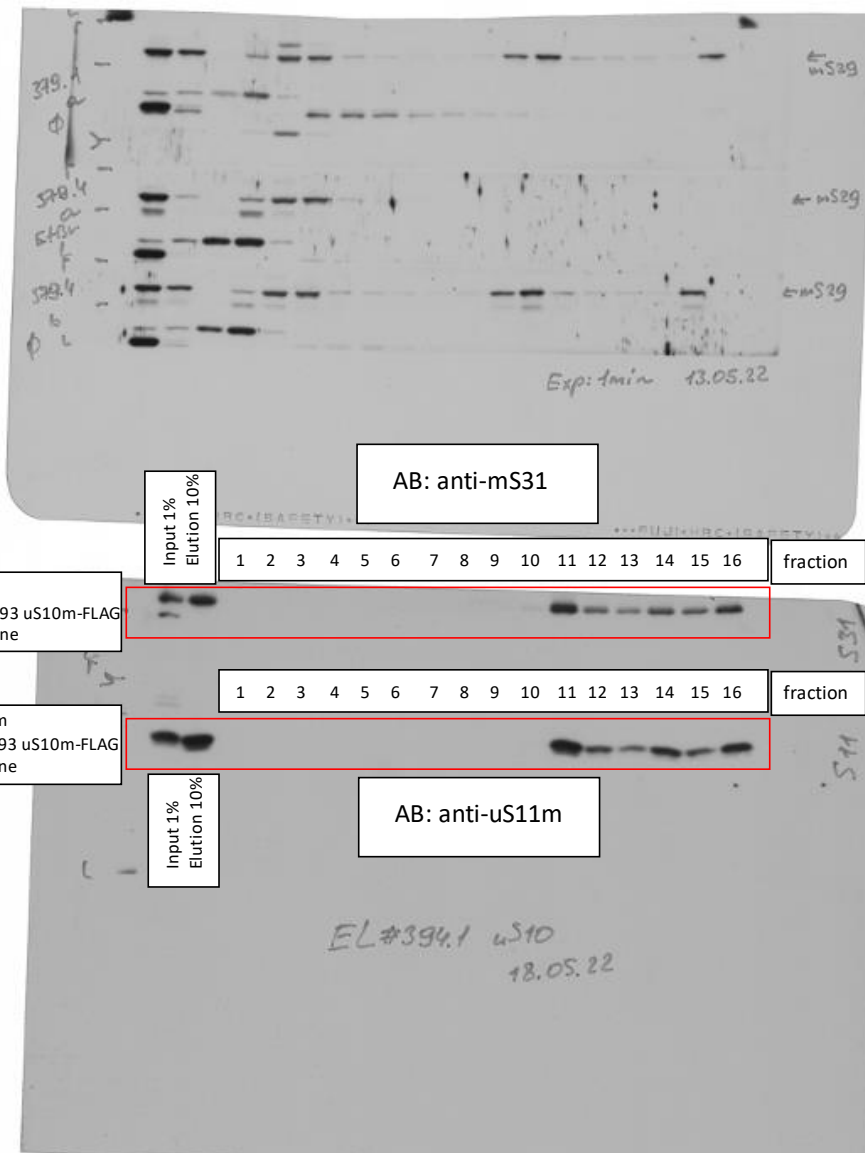
EL#392.1-2 uS10m-FLAG IP + Gradient

Rotor: SW41 Ti

Gradient: Sucrose 5-30%

Speed: 158.000xg

Time: 15h



Source Data 2_related to Extended Data Fig.3f

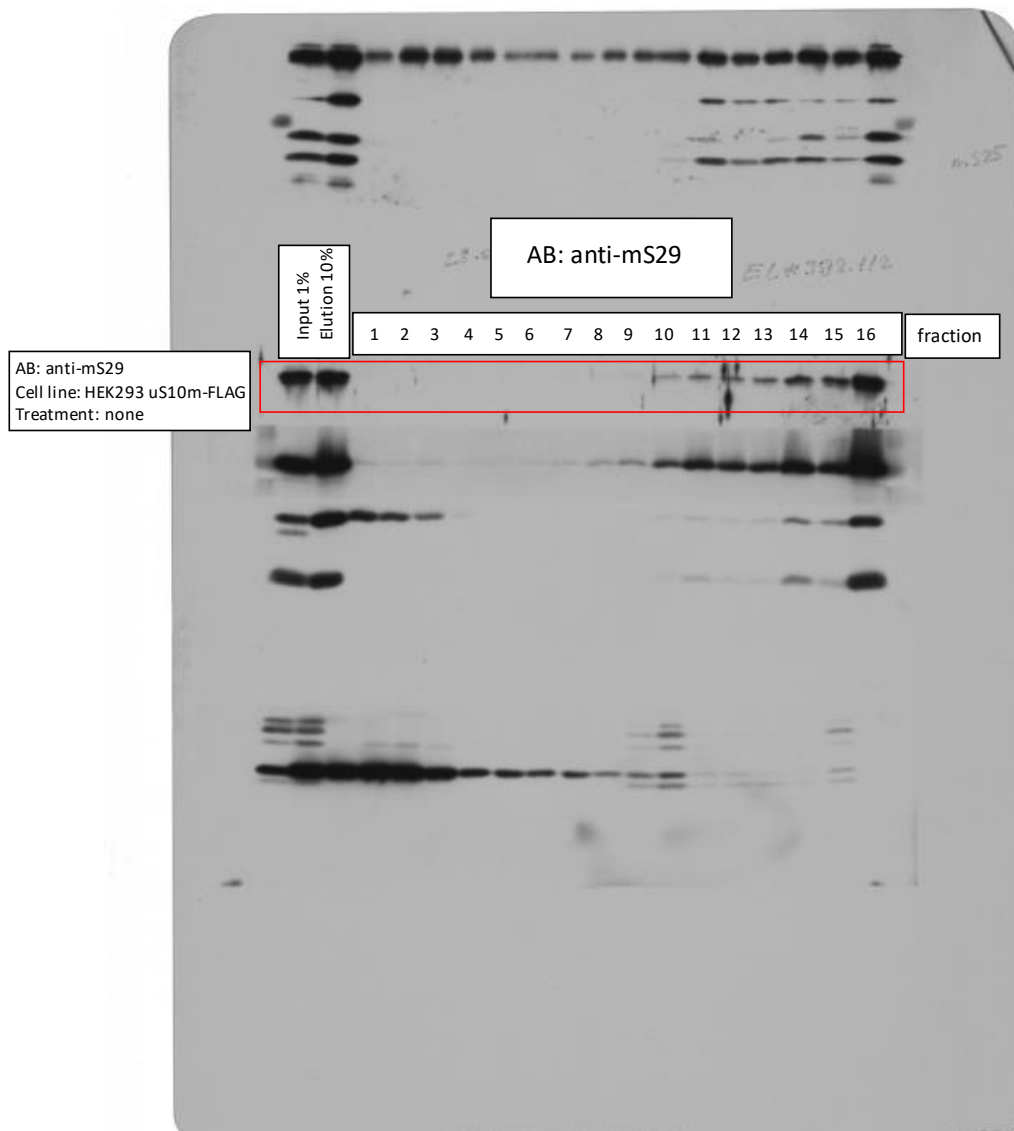
EL#392.1-2 uS10m-FLAG IP + Gradient

Rotor: SW41 Ti

Gradient: Sucrose 5-30%

Speed: 158.000xg

Time: 15h



Source Data 2_related to Extended Data Fig.3f

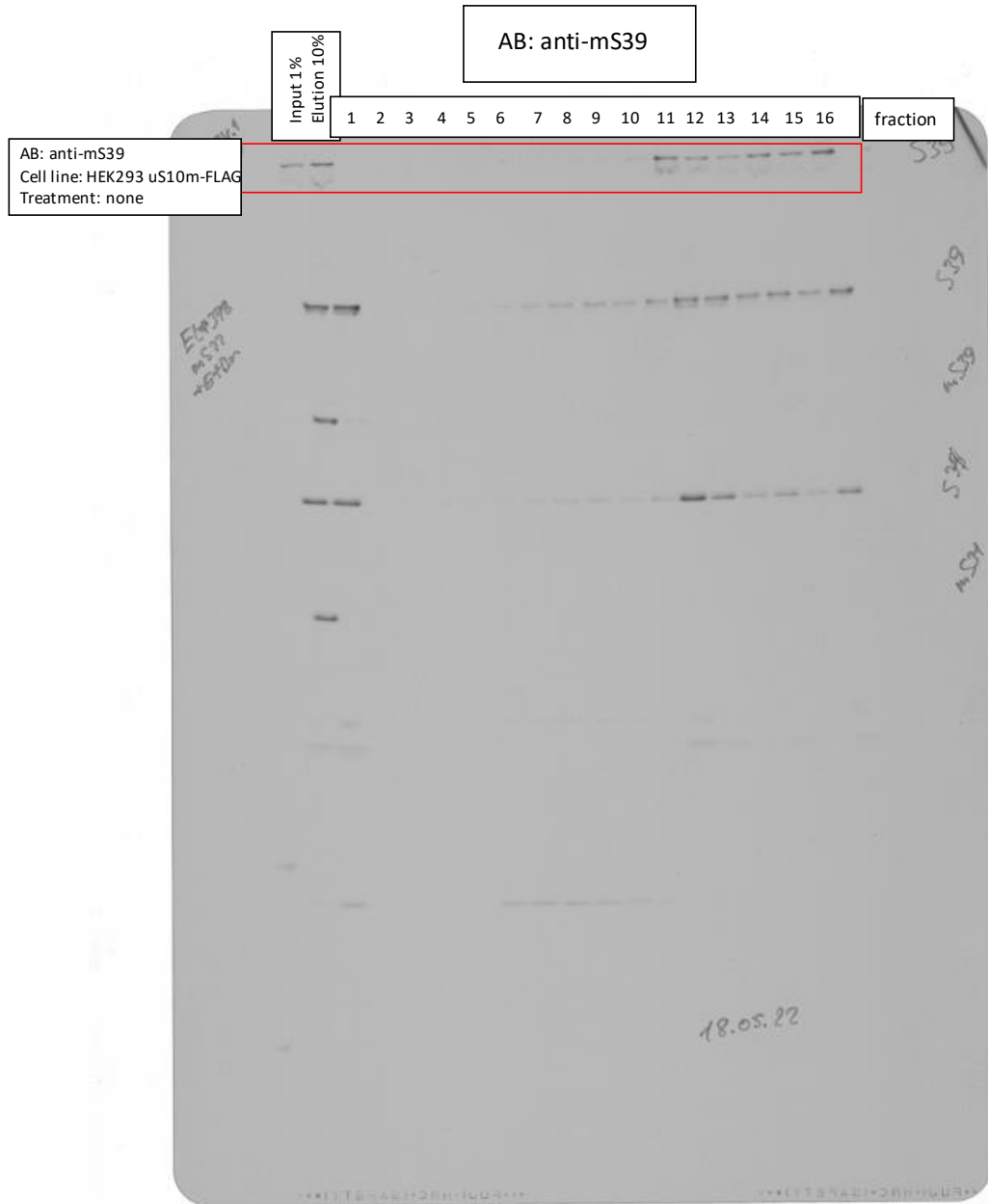
EL#392.1-2 uS10m-FLAG IP + Gradient

Rotor: SW41 Ti

Gradient: Sucrose 5-30%

Speed: 158.000xg

Time: 15h



Source Data 2_related to Extended Data Fig.3g

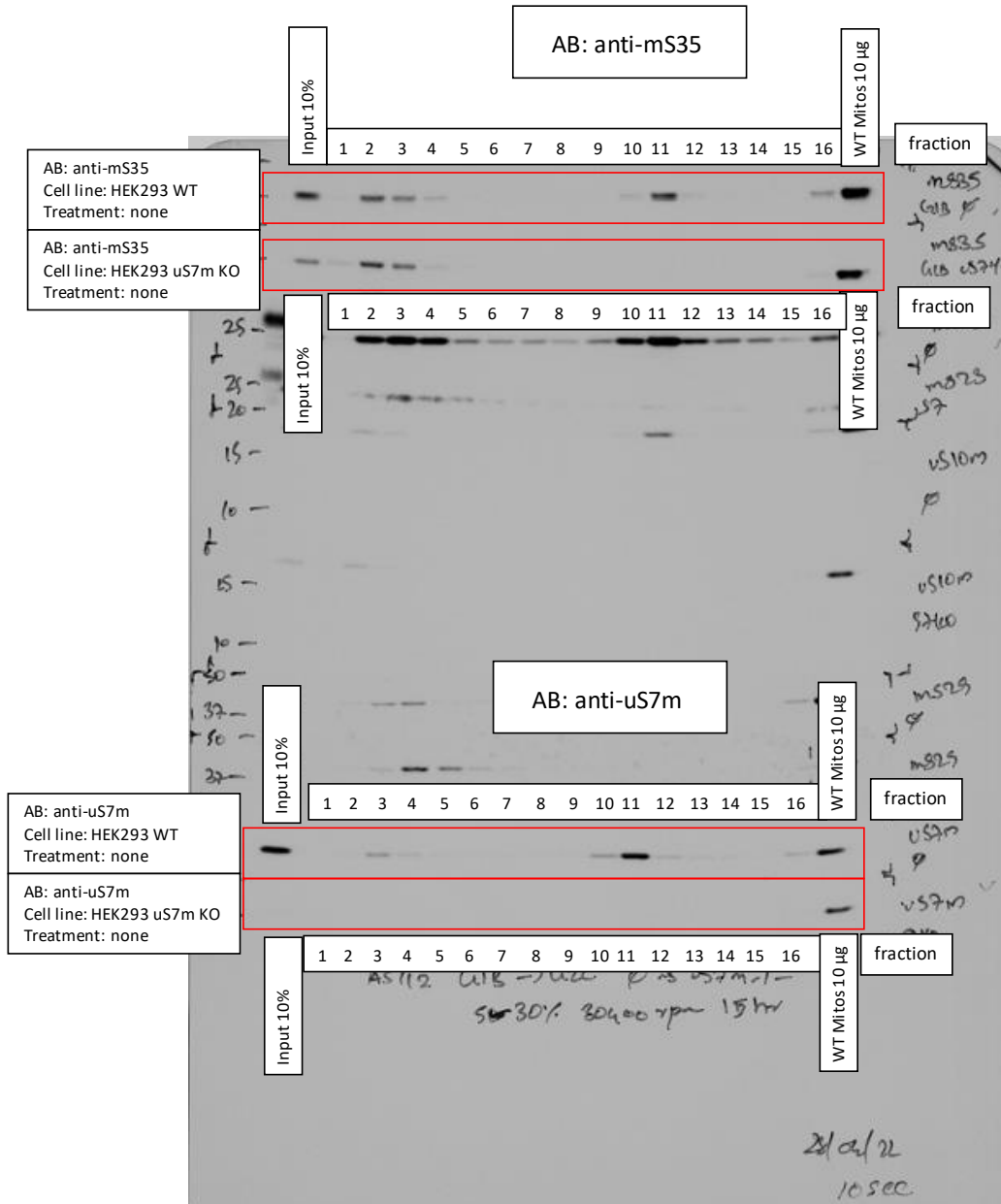
AS#112 HEK293 WT vs. HEK293 uS7m KO

Rotor: SW41 Ti

Gradient: Sucrose 5-30%

Speed: 158.000xg

Time: 15h



Source Data 2_related to Extended Data Fig.3g

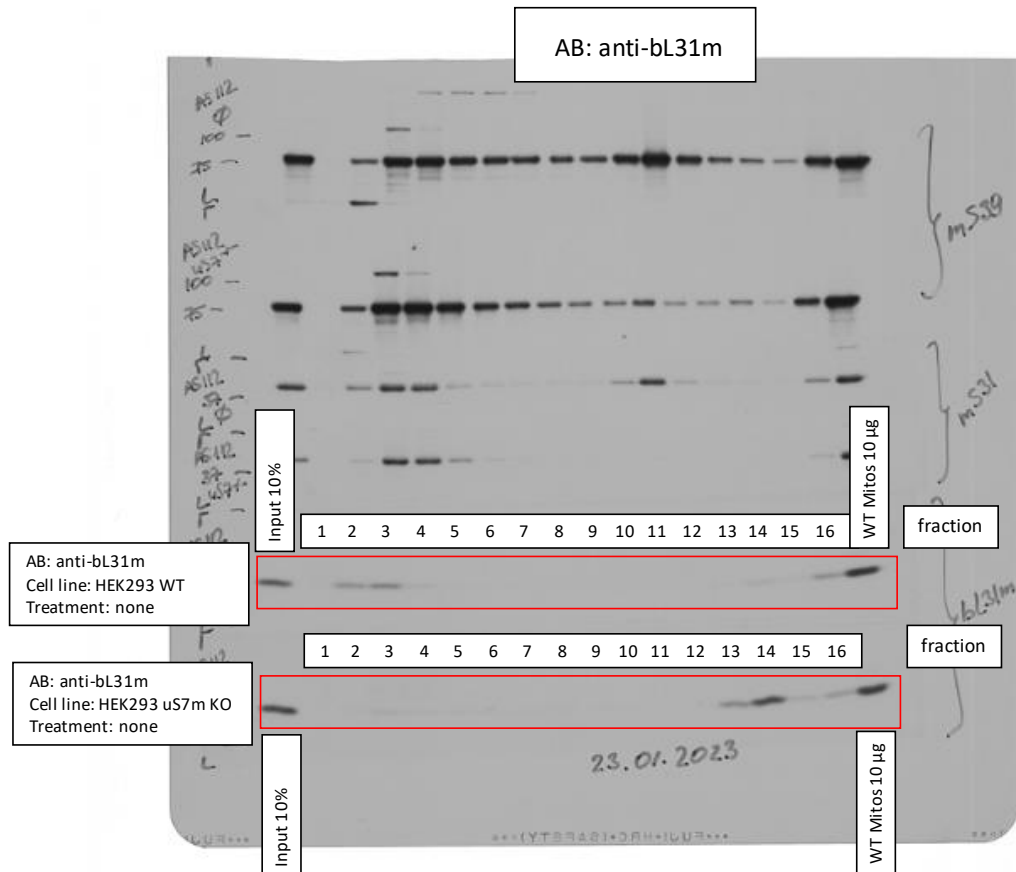
AS#112 HEK293 WT vs. HEK293 uS7m KO

Rotor: SW41 Ti

Gradient: Sucrose 5-30%

Speed: 158.000xg

Time: 15h



Source Data 2_related to Extended Data Fig.3g

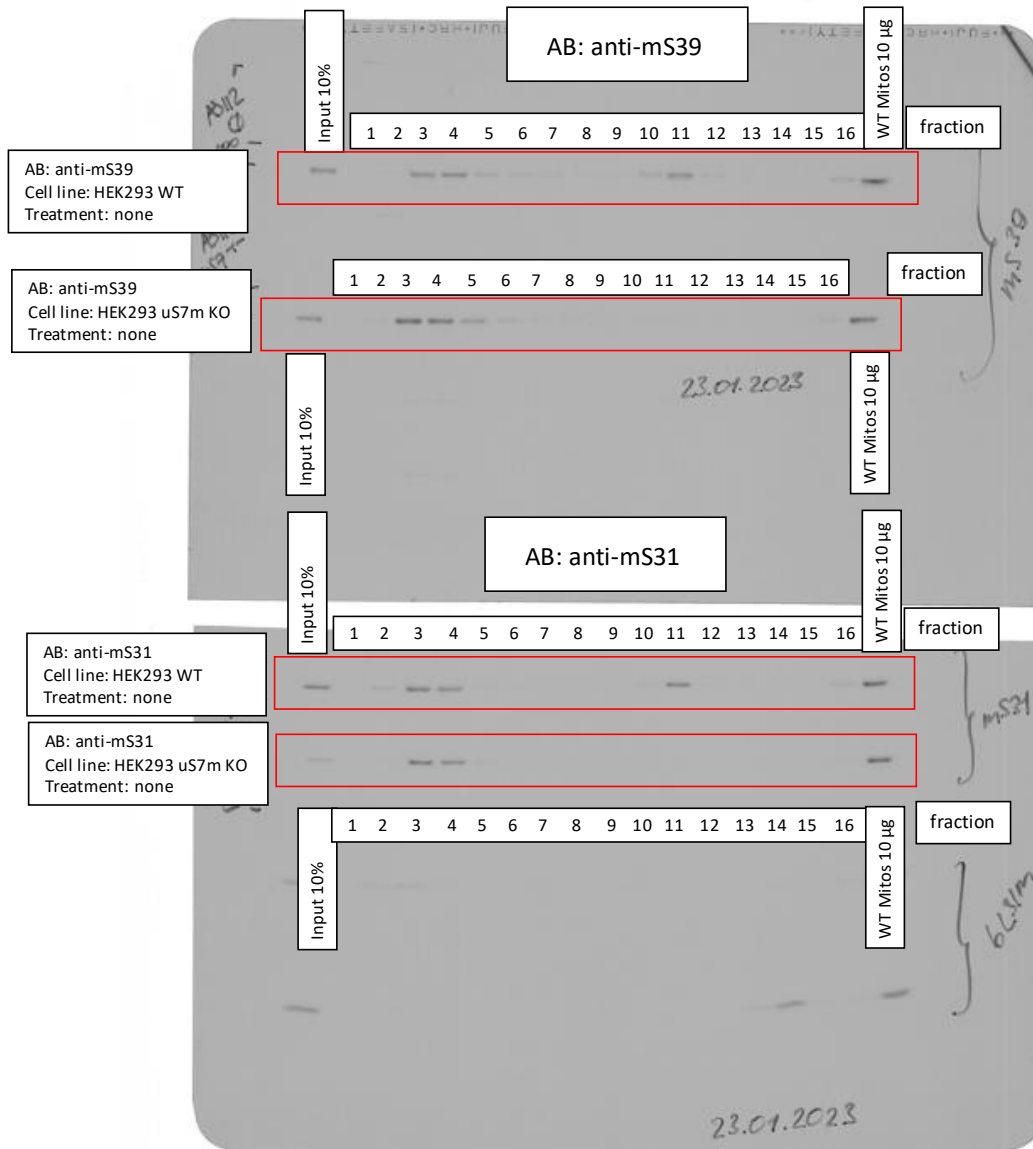
AS#112 HEK293 WT vs. HEK293 uS7m KO

Rotor: SW41 Ti

Gradient: Sucrose 5-30%

Speed: 158.000xg

Time: 15h



Source Data 2_related to Extended Data Fig.3g

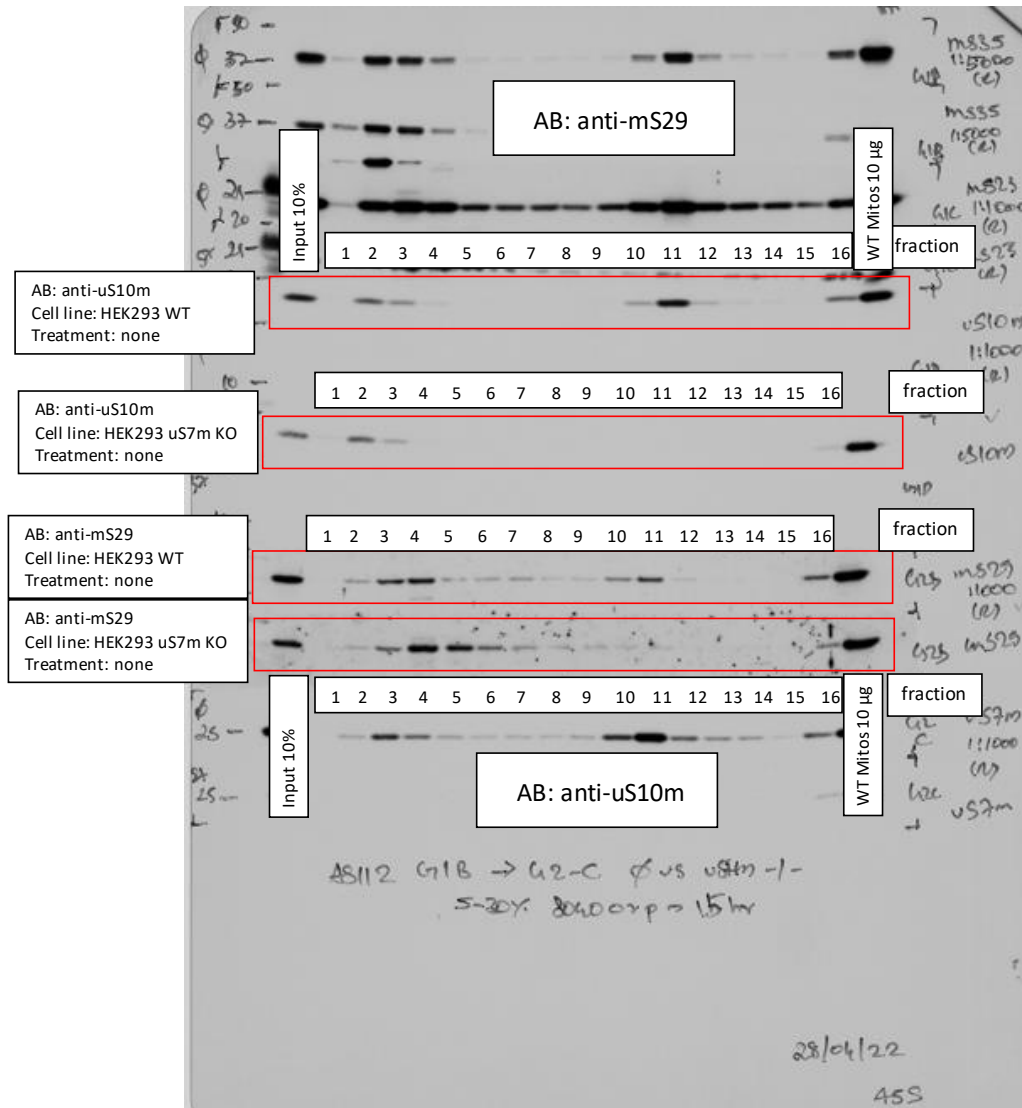
AS#112 HEK293 WT vs. HEK293 uS7m KO

Rotor: SW41 Ti

Gradient: Sucrose 5-30%

Speed: 158.000xg

Time: 15h



Source Data 2_related to Extended Data Fig.3g

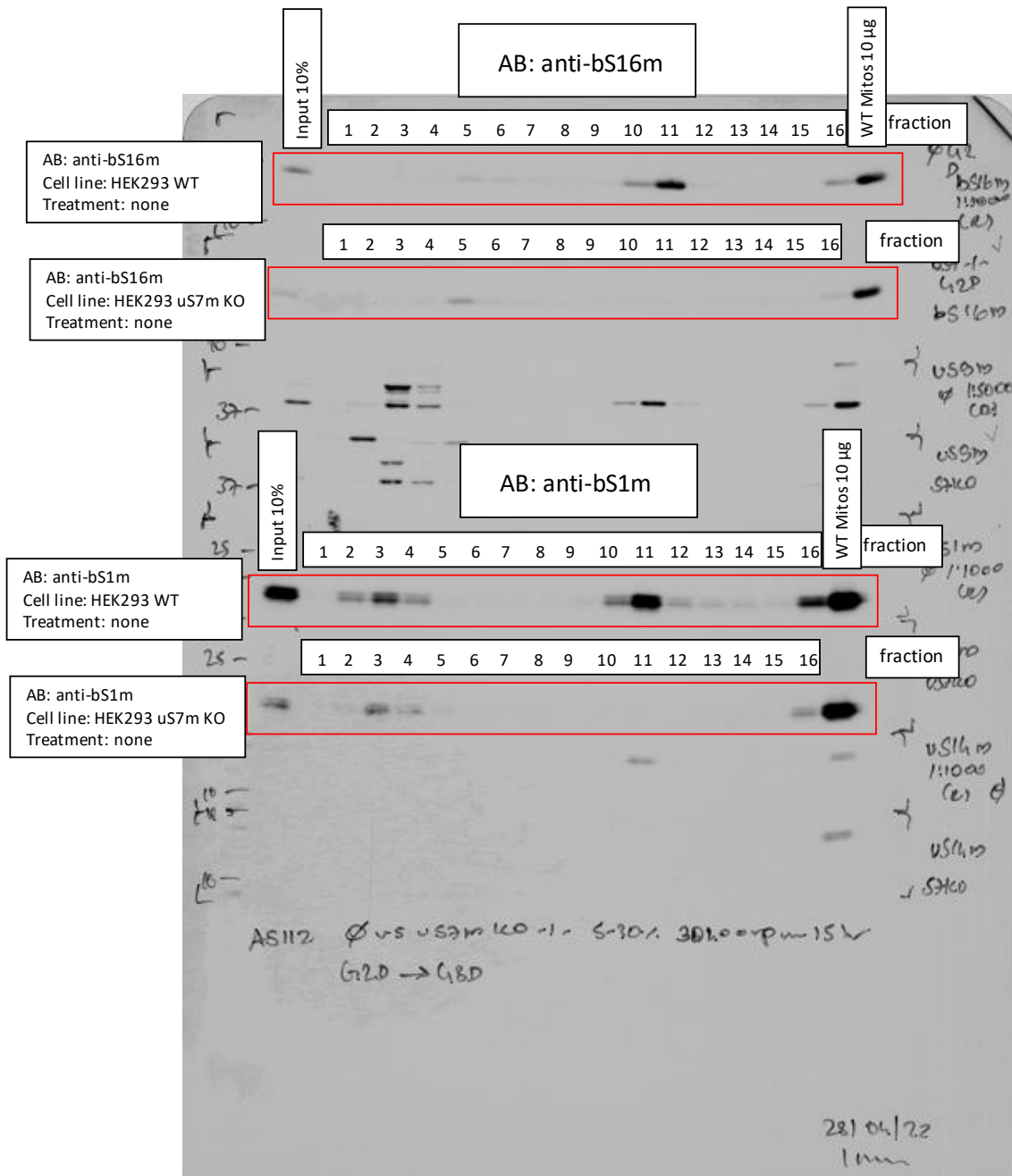
AS#112 HEK293 WT vs. HEK293 uS7m KO

Rotor: SW41 Ti

Gradient: Sucrose 5-30%

Speed: 158.000xg

Time: 15h



Source Data 2_related to Extended Data Fig.3g

AS#112 HEK293 WT vs. HEK293 uS7m KO

Rotor: SW41 Ti

Gradient: Sucrose 5-30%

Speed: 158.000xg

Time: 15h

