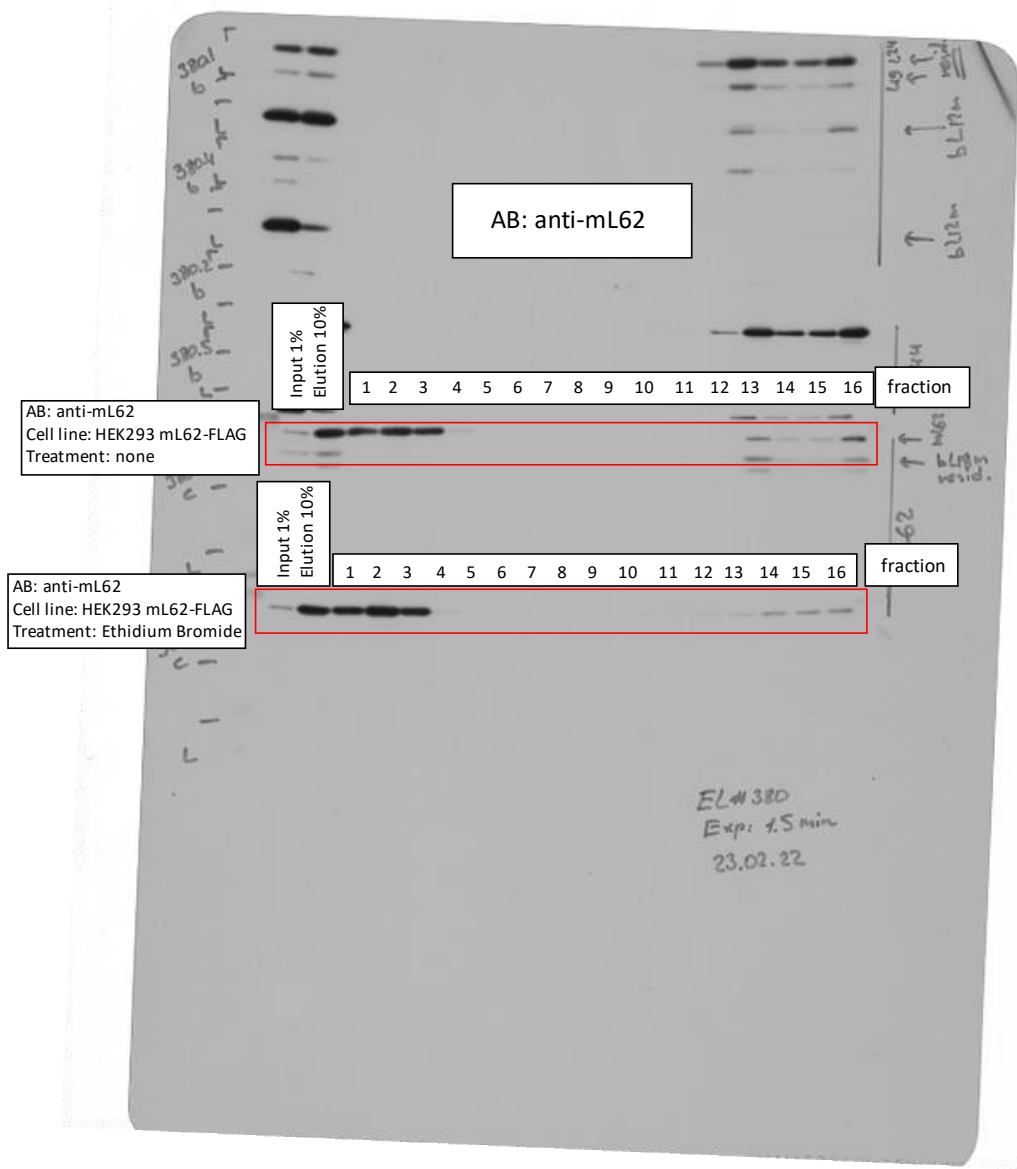
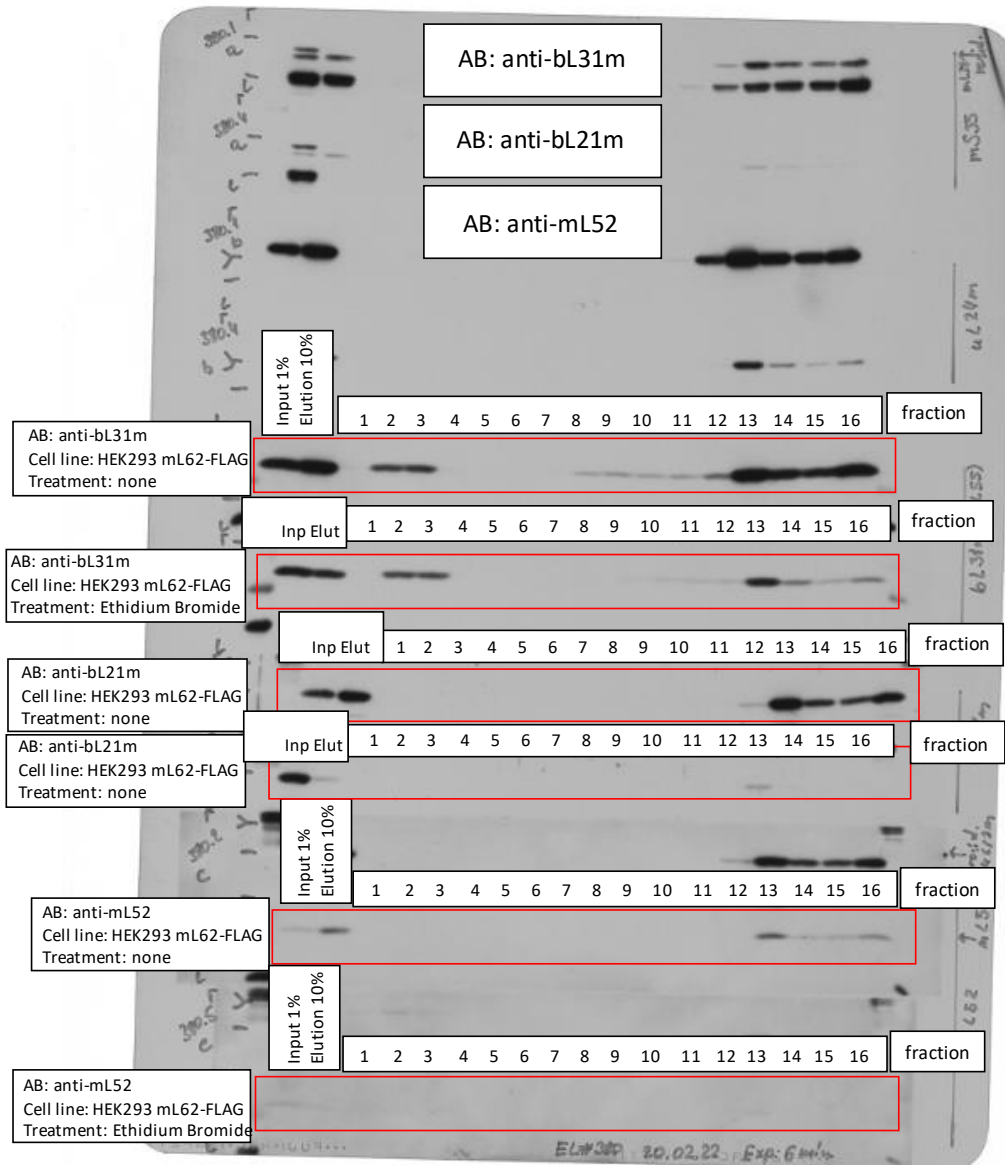


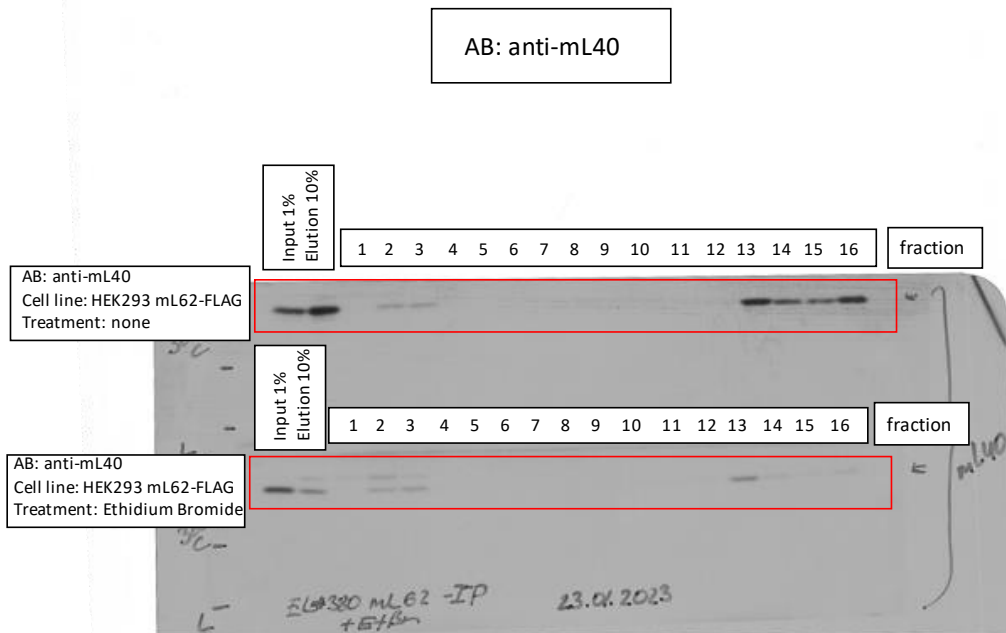
Source Data 3_related to Extended Data Fig.7a
 EL#380 mL62-FLAG IP + Gradient + EtBr treatment
 Rotor: SW41 Ti
 Gradient: Sucrose 5-30%
 Speed: 158.000xg
 Time: 15h



Source Data 3_related to Extended Data Fig.7a
 EL#380 mL62-FLAG IP + Gradient + EtBr treatment
 Rotor: SW41 Ti
 Gradient: Sucrose 5-30%
 Speed: 158.000xg
 Time: 15h

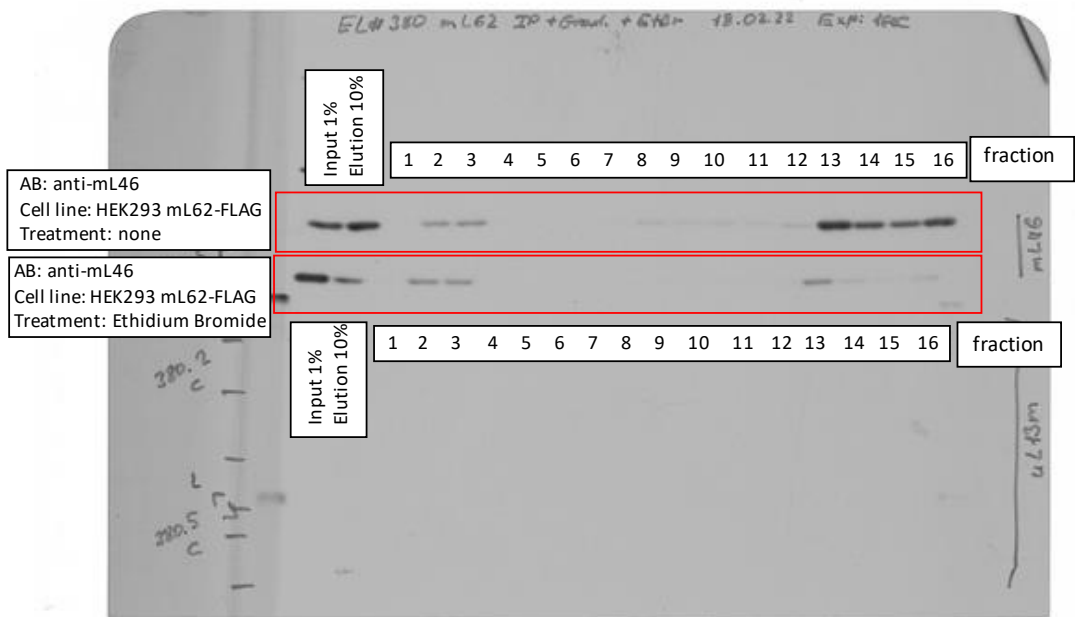


Source Data 3_related to Extended Data Fig.7a
EL#380 mL62-FLAG IP + Gradient + EtBr treatment
Rotor: SW41 Ti
Gradient: Sucrose 5-30%
Speed: 158.000xg
Time: 15h

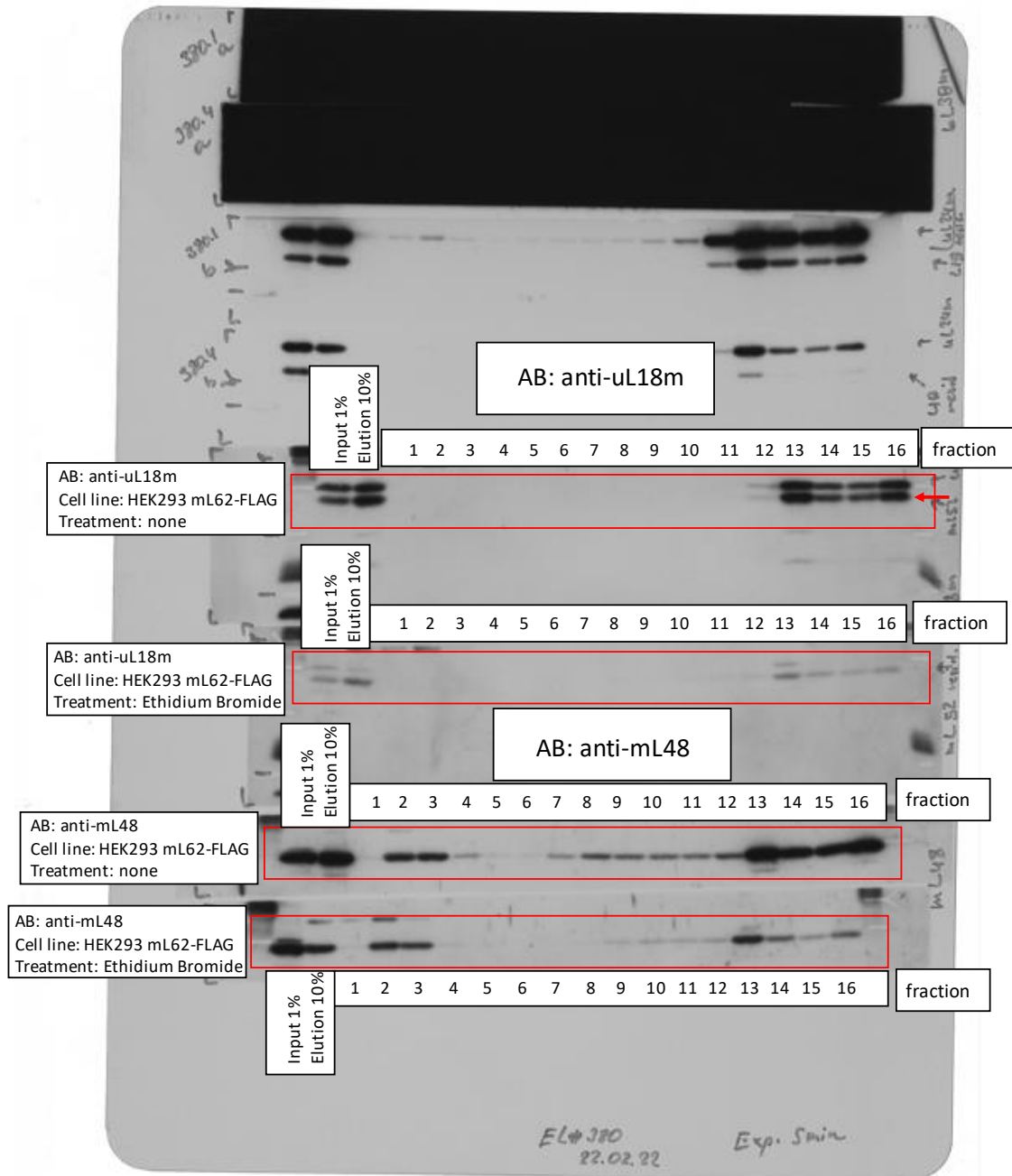


Source Data 3_related to Extended Data Fig.7a
EL#380 mL62-FLAG IP + Gradient + EtBr treatment
Rotor: SW41 Ti
Gradient: Sucrose 5-30%
Speed: 158.000xg
Time: 15h

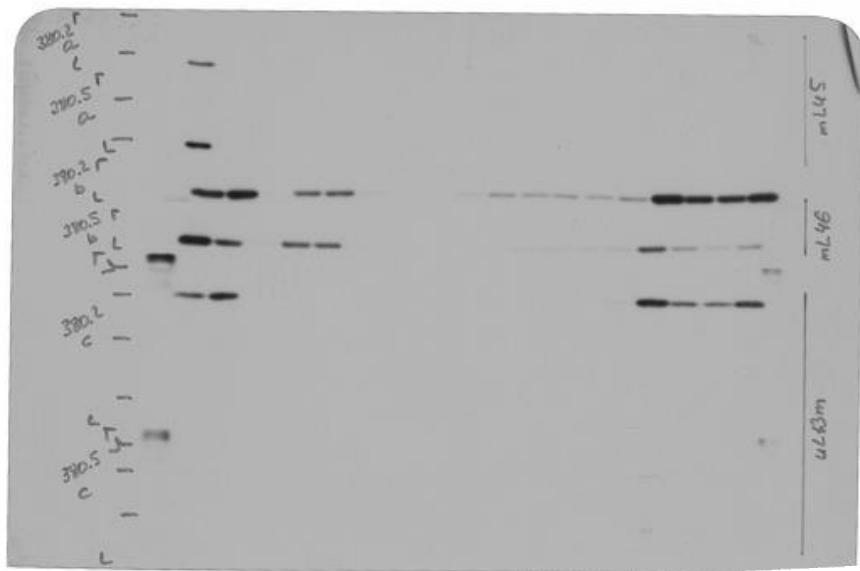
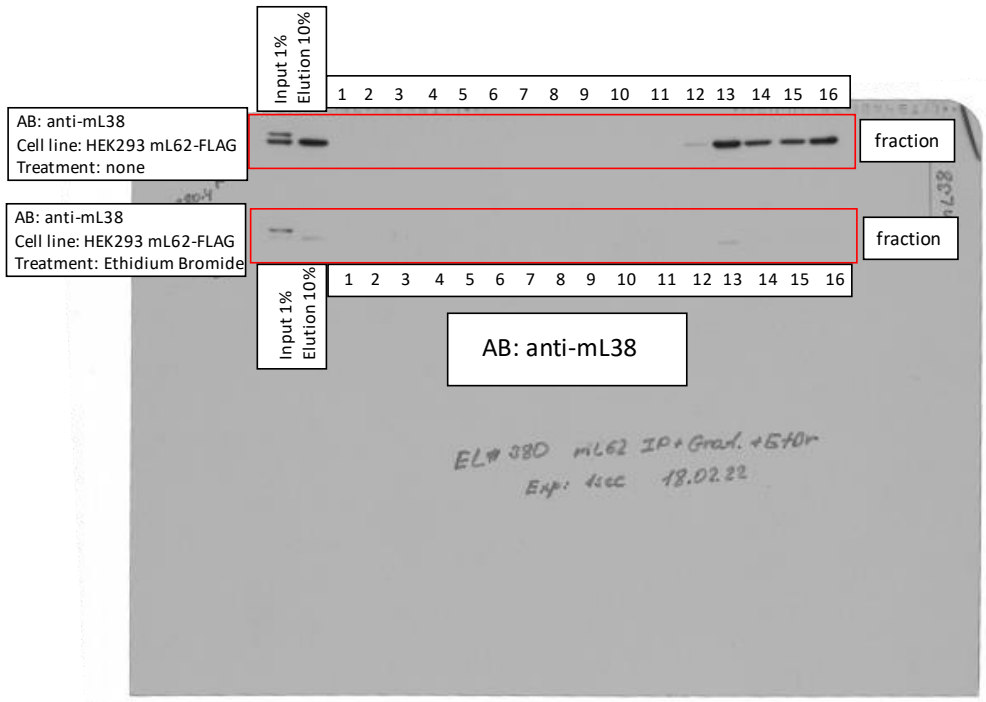
AB: anti-mL46



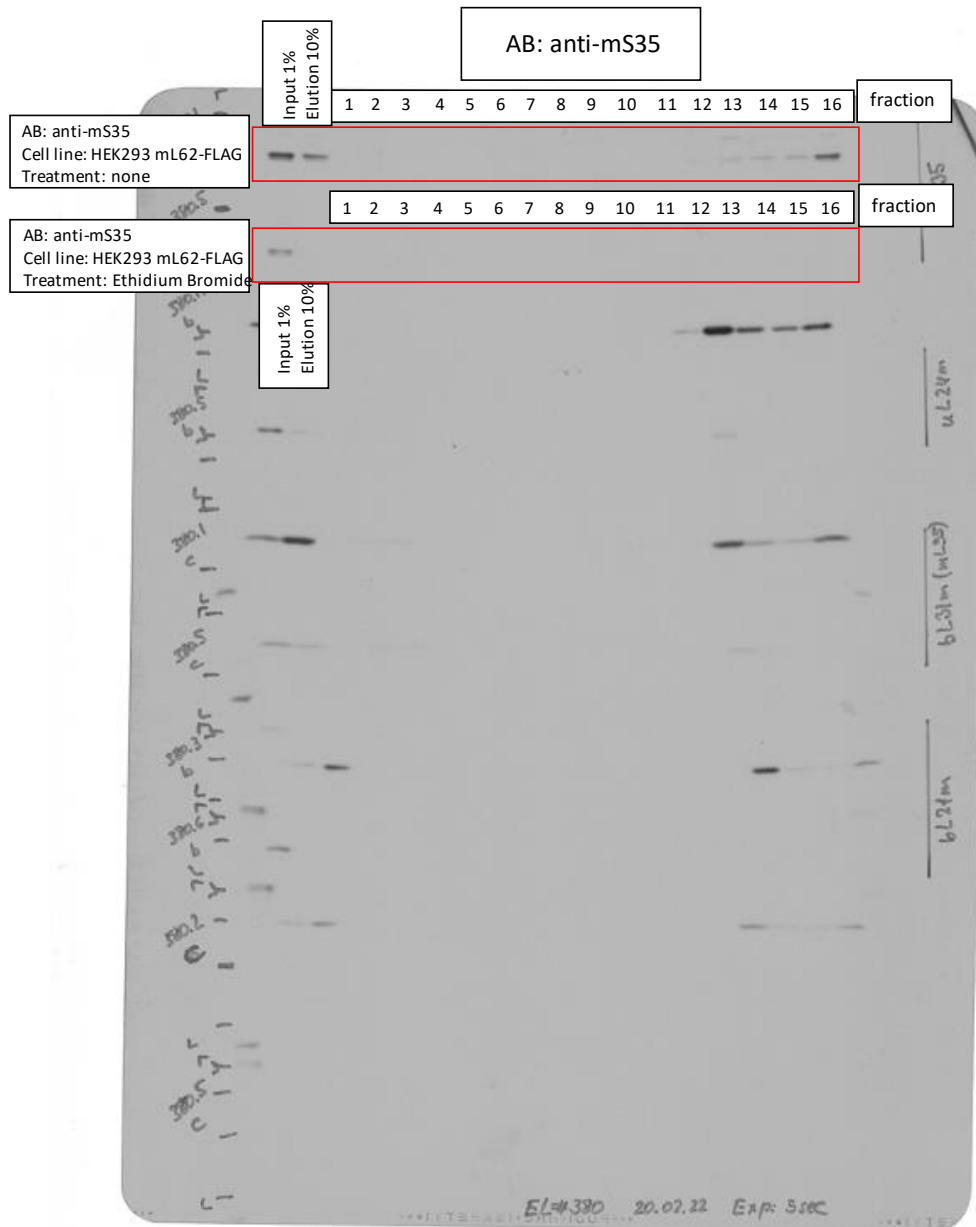
Source Data 3_related to Extended Data Fig.7a
 EL#380 mL62-FLAG IP + Gradient + EtBr treatment
 Rotor: SW41 Ti
 Gradient: Sucrose 5-30%
 Speed: 158.000xg
 Time: 15h



Source Data 3_related to Extended Data Fig.7a
 EL#380 mL62-FLAG IP + Gradient + EtBr treatment
 Rotor: SW41 Ti
 Gradient: Sucrose 5-30%
 Speed: 158.000xg
 Time: 15h



Source Data 3_related to Extended Data Fig.7a
 EL#380 mL62-FLAG IP + Gradient + EtBr treatment
 Rotor: SW41 Ti
 Gradient: Sucrose 5-30%
 Speed: 158.000xg
 Time: 15h



Source Data 3_related to Extended Data Fig.7b

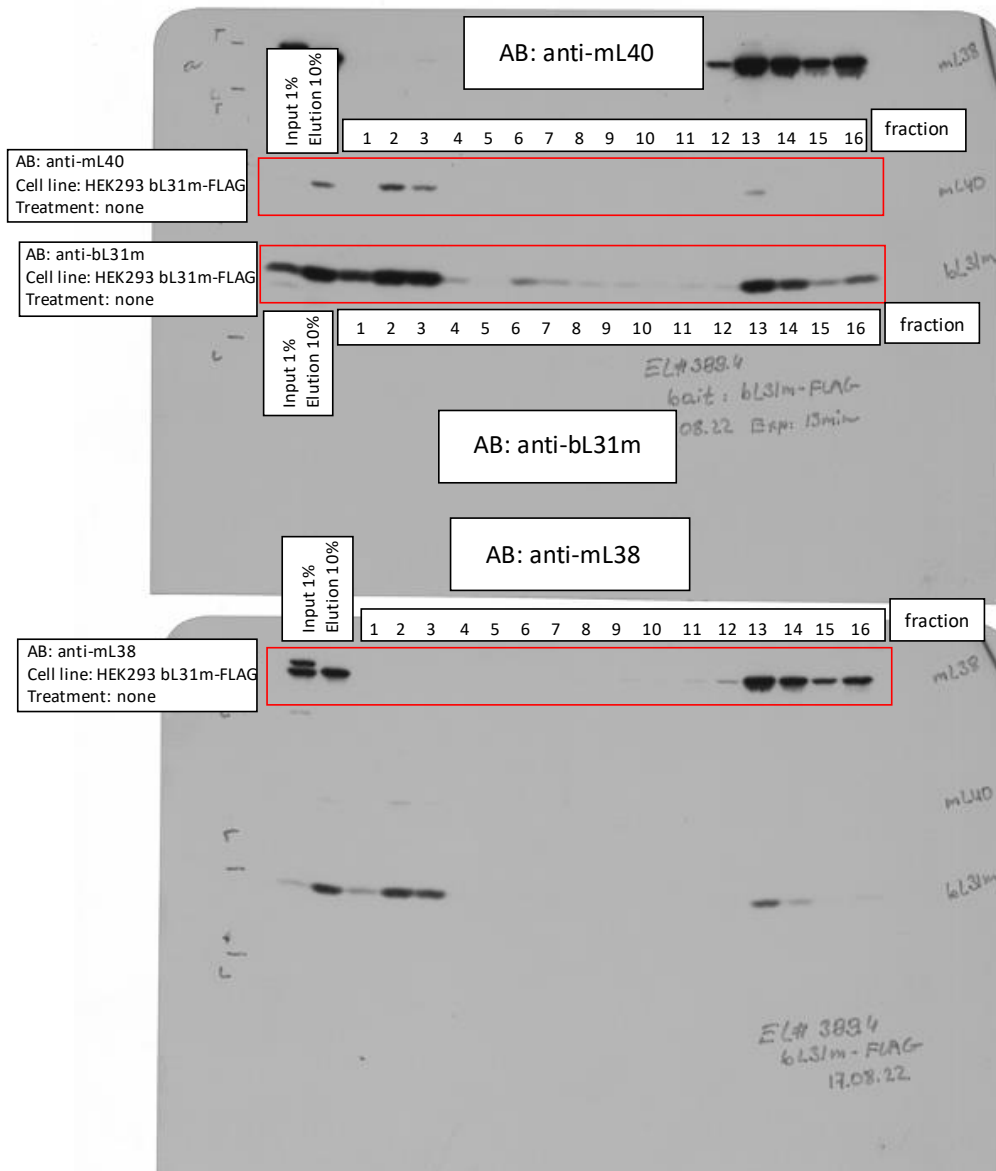
EL#399.4-6 bL31m-FLAG IP + Gradient

Rotor: SW41 Ti

Gradient: Sucrose 5-30%

Speed: 158.000xg

Time: 15h



Source Data 3_related to Extended Data Fig.7b

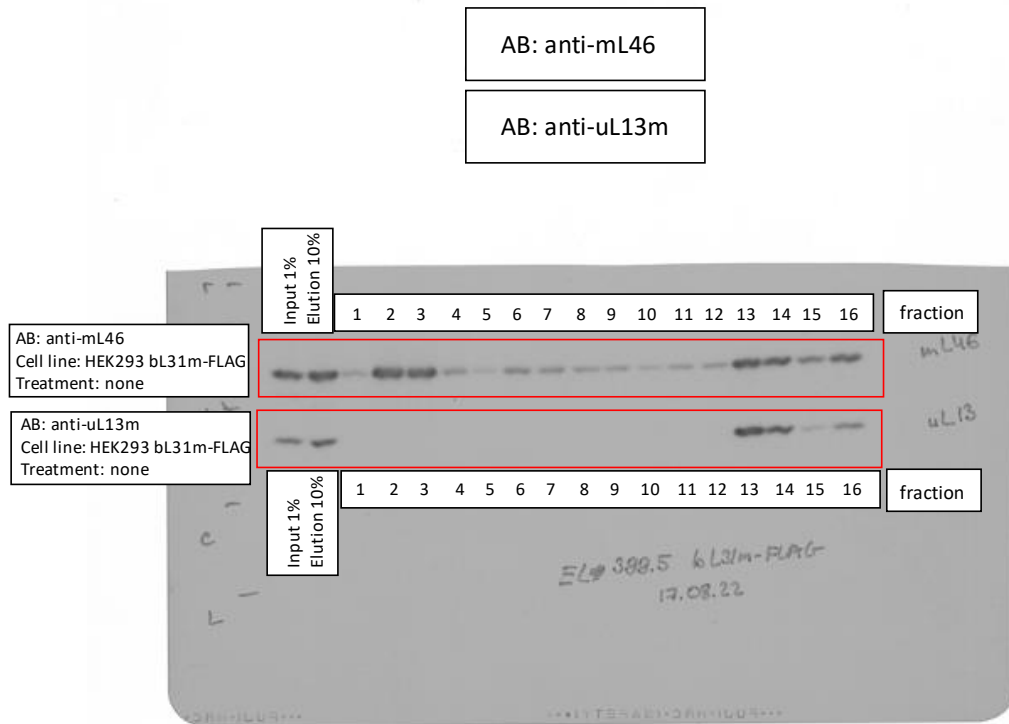
EL#399.4-6 bL31m-FLAG IP + Gradient

Rotor: SW41 Ti

Gradient: Sucrose 5-30%

Speed: 158.000xg

Time: 15h



Source Data 3_related to Extended Data Fig.7b

EL#399.4-6 bL31m-FLAG IP + Gradient

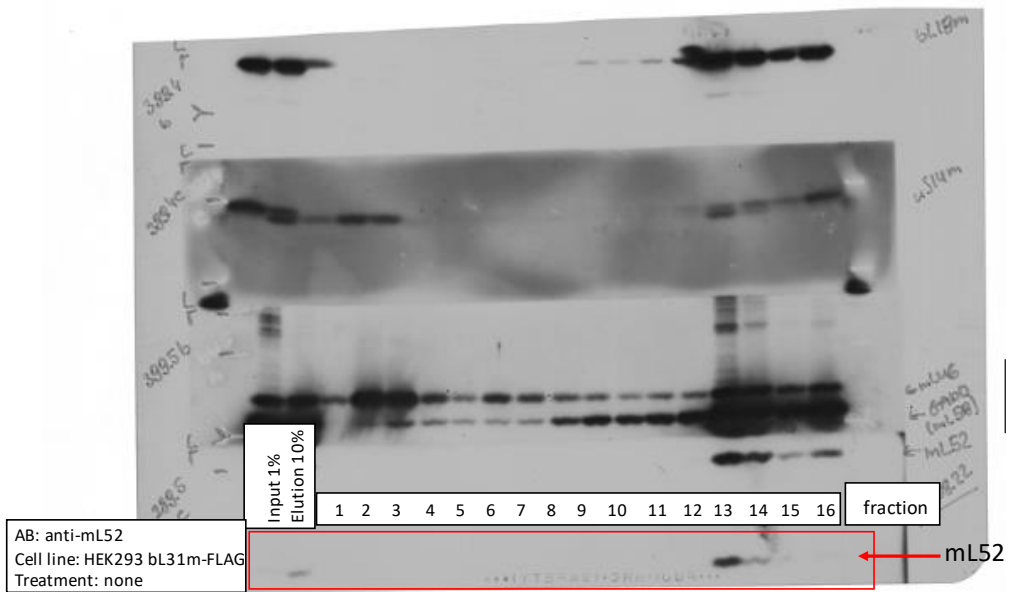
Rotor: SW41 Ti

Gradient: Sucrose 5-30%

Speed: 158.000xg

Time: 15h

AB: anti-mL52



Source Data 3_related to Extended Data Fig.7b

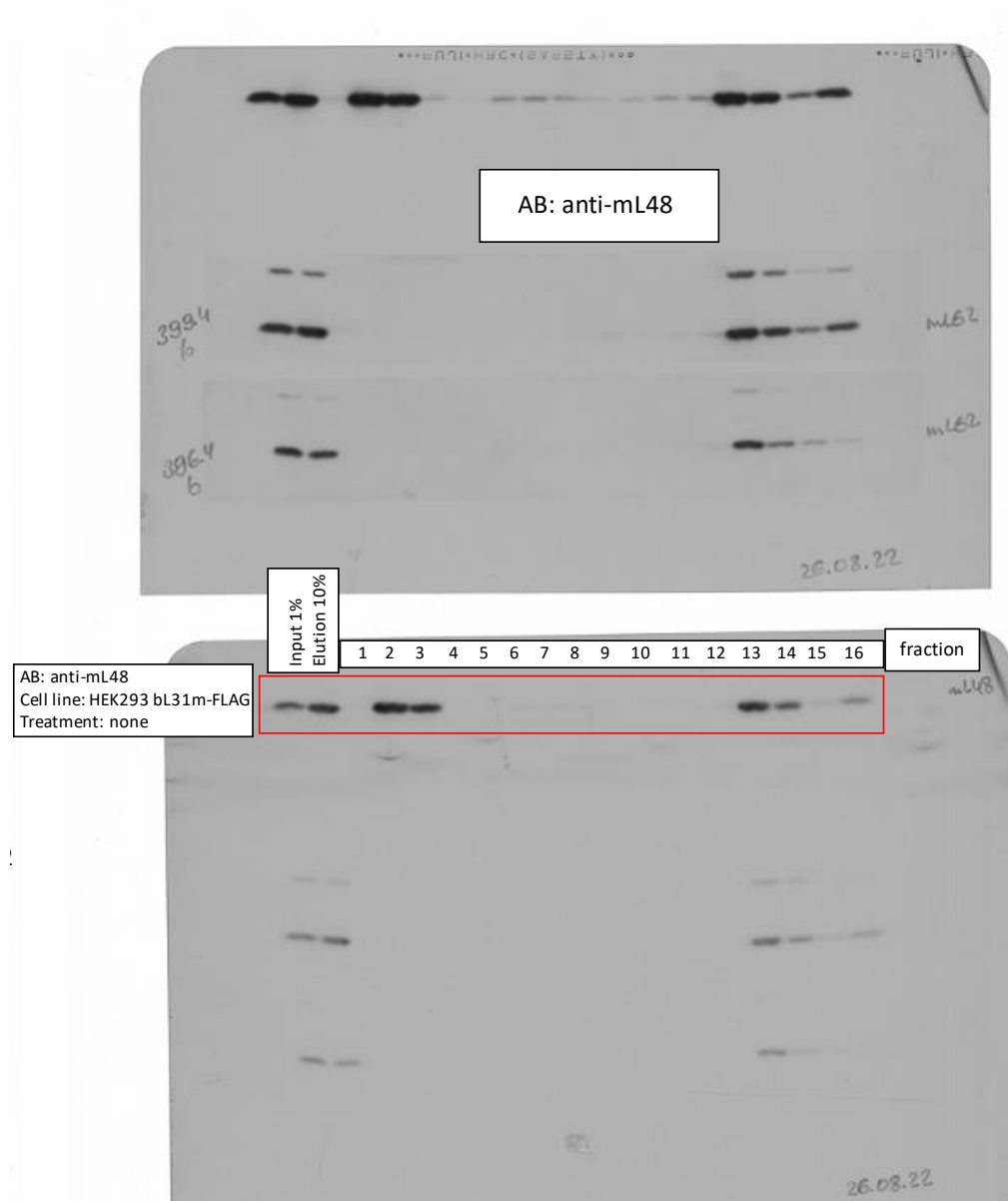
EL#399.4-6 bL31m-FLAG IP + Gradient

Rotor: SW41 Ti

Gradient: Sucrose 5-30%

Speed: 158.000xg

Time: 15h



Source Data 3_related to Extended Data Fig.7b

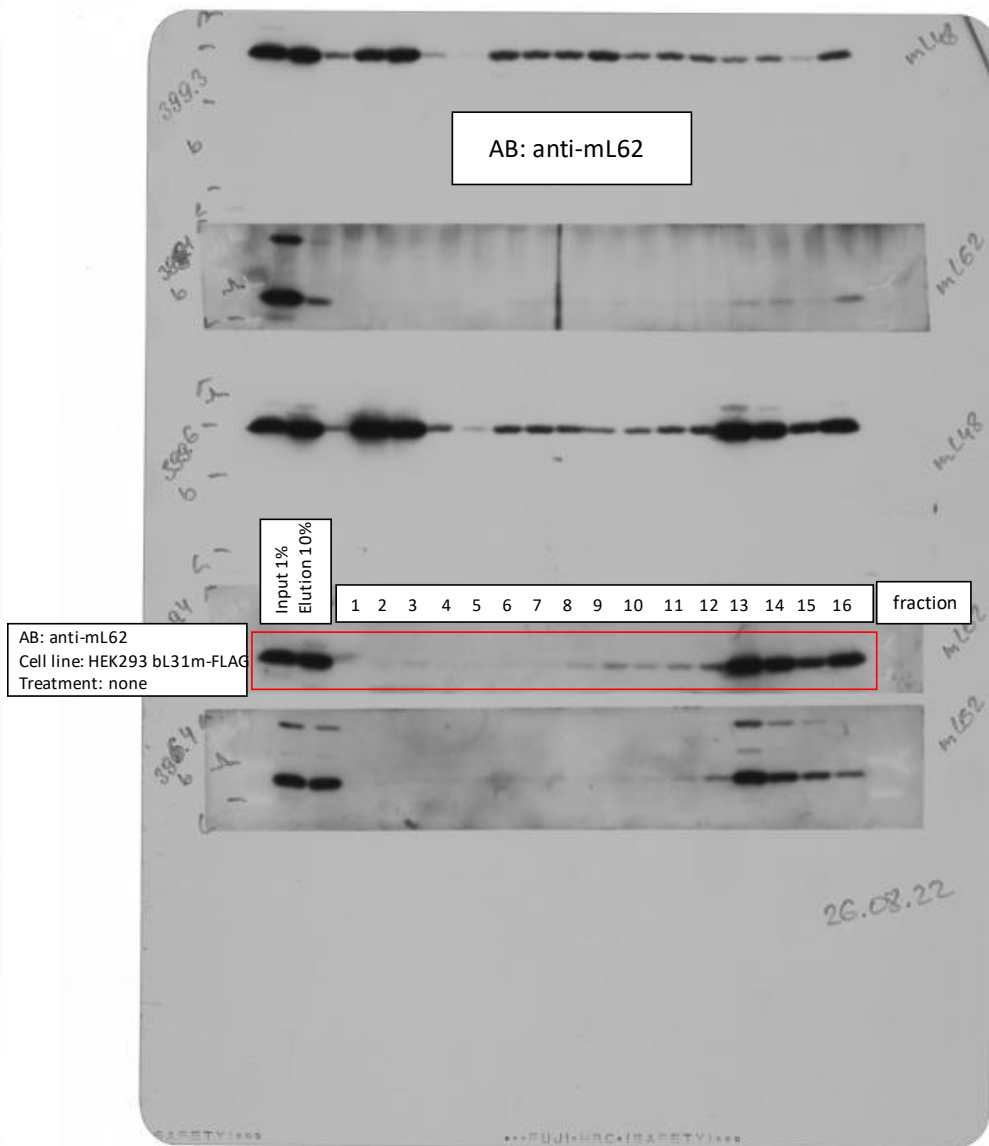
EL#399.4-6 bL31m-FLAG IP + Gradient

Rotor: SW41 Ti

Gradient: Sucrose 5-30%

Speed: 158.000xg

Time: 15h



Source Data 3_related to Extended Data Fig.7b

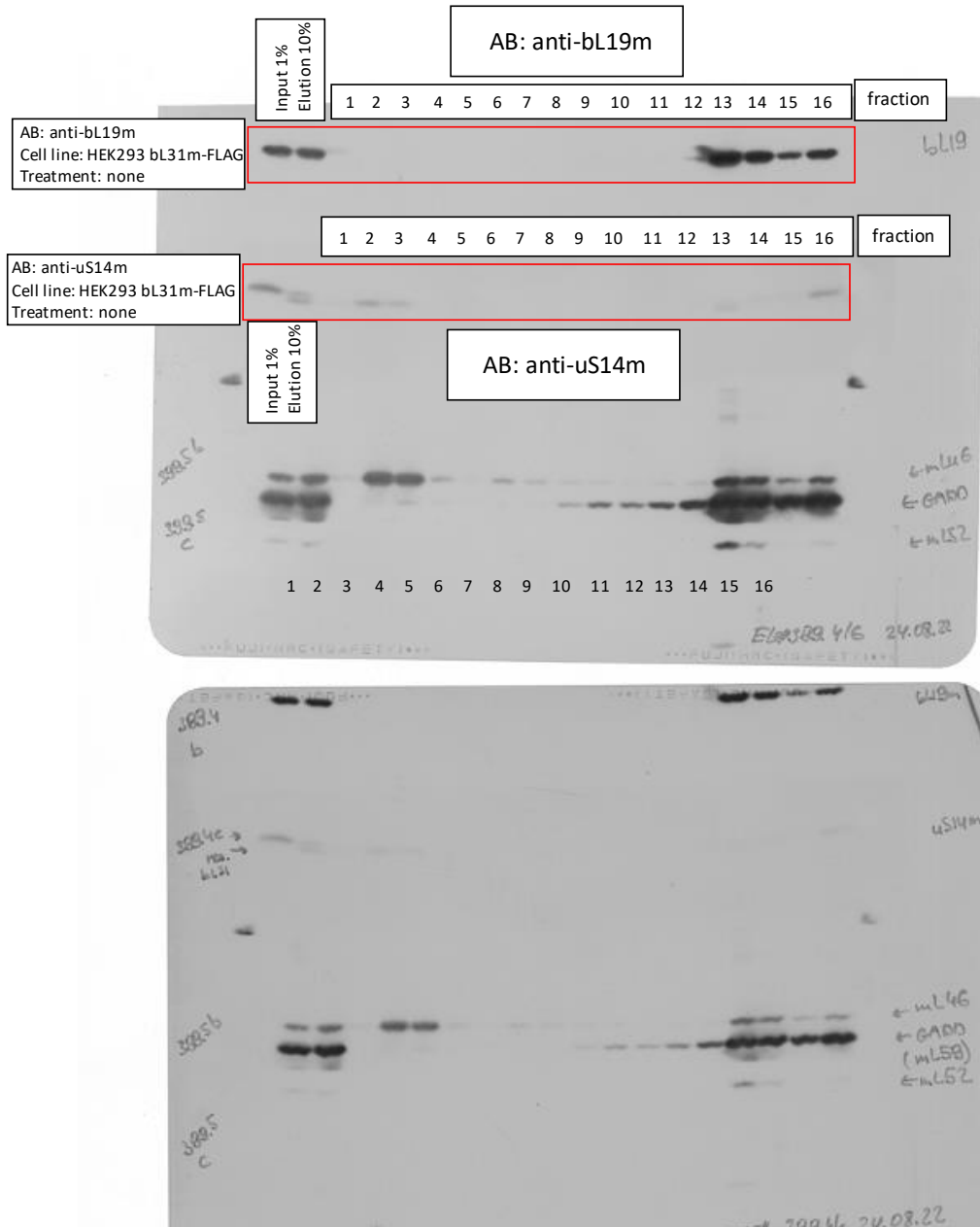
EL#399.4-6 bL31m-FLAG IP + Gradient

Rotor: SW41 Ti

Gradient: Sucrose 5-30%

Speed: 158.000xg

Time: 15h



Source Data 3_related to Extended Data Fig.7b

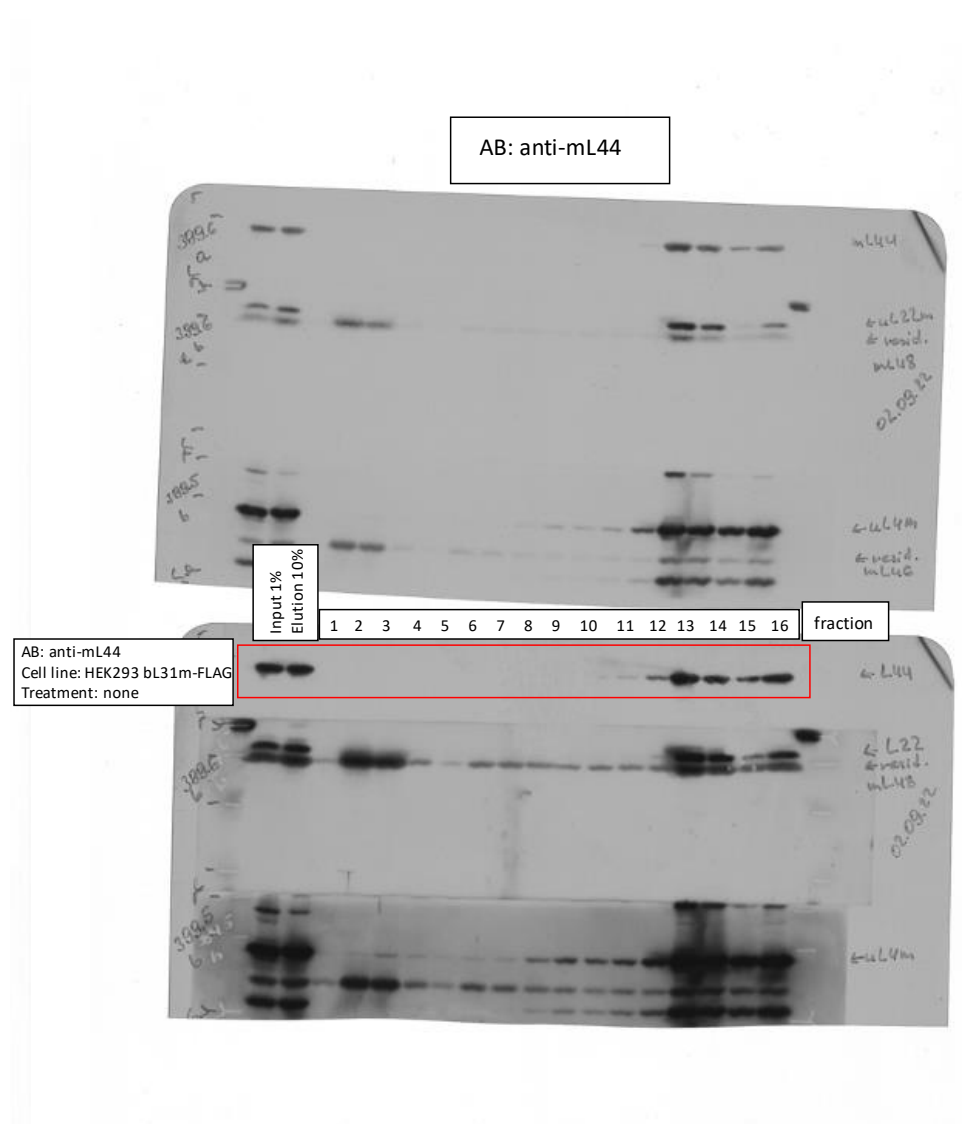
EL#399.4-6 bl31m-FLAG IP + Gradient

Rotor: SW41 Ti

Gradient: Sucrose 5-30%

Speed: 158.000xg

Time: 15h



Source Data 3_related to Extended Data Fig.7b

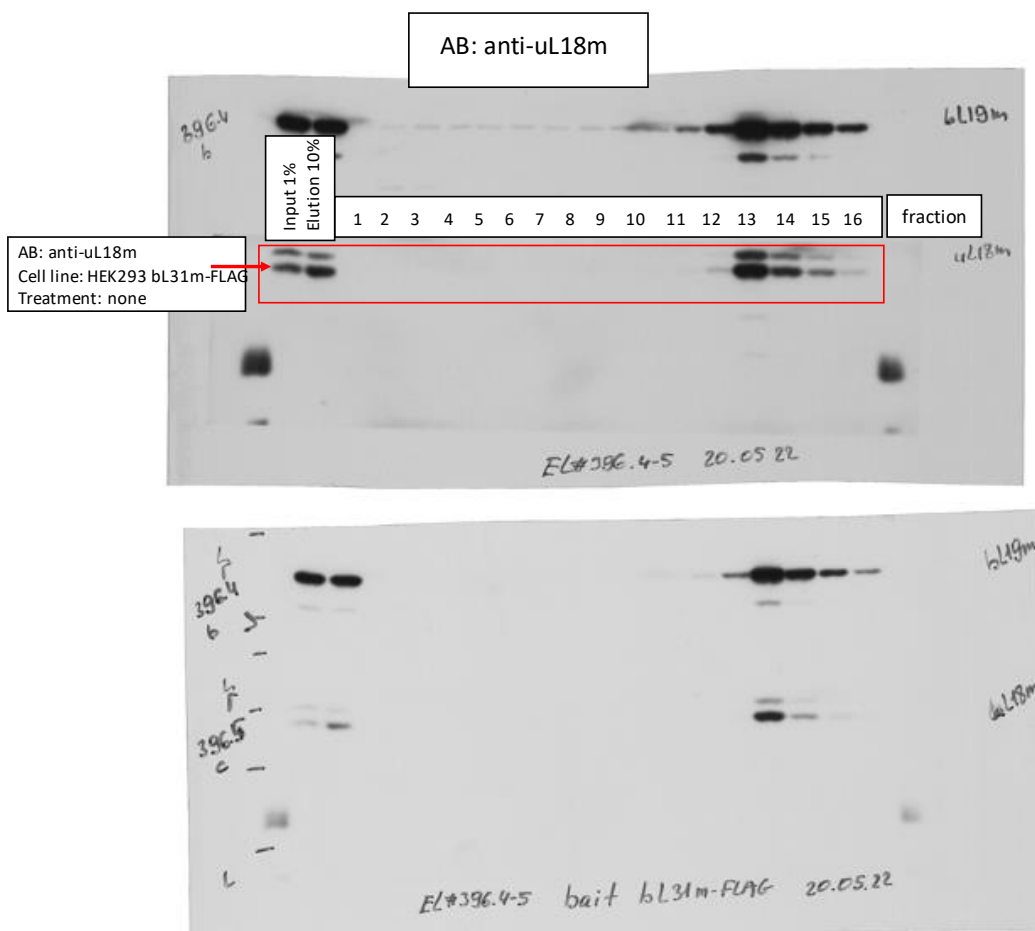
EL#399.4-6 bL31m-FLAG IP + Gradient

Rotor: SW41 Ti

Gradient: Sucrose 5-30%

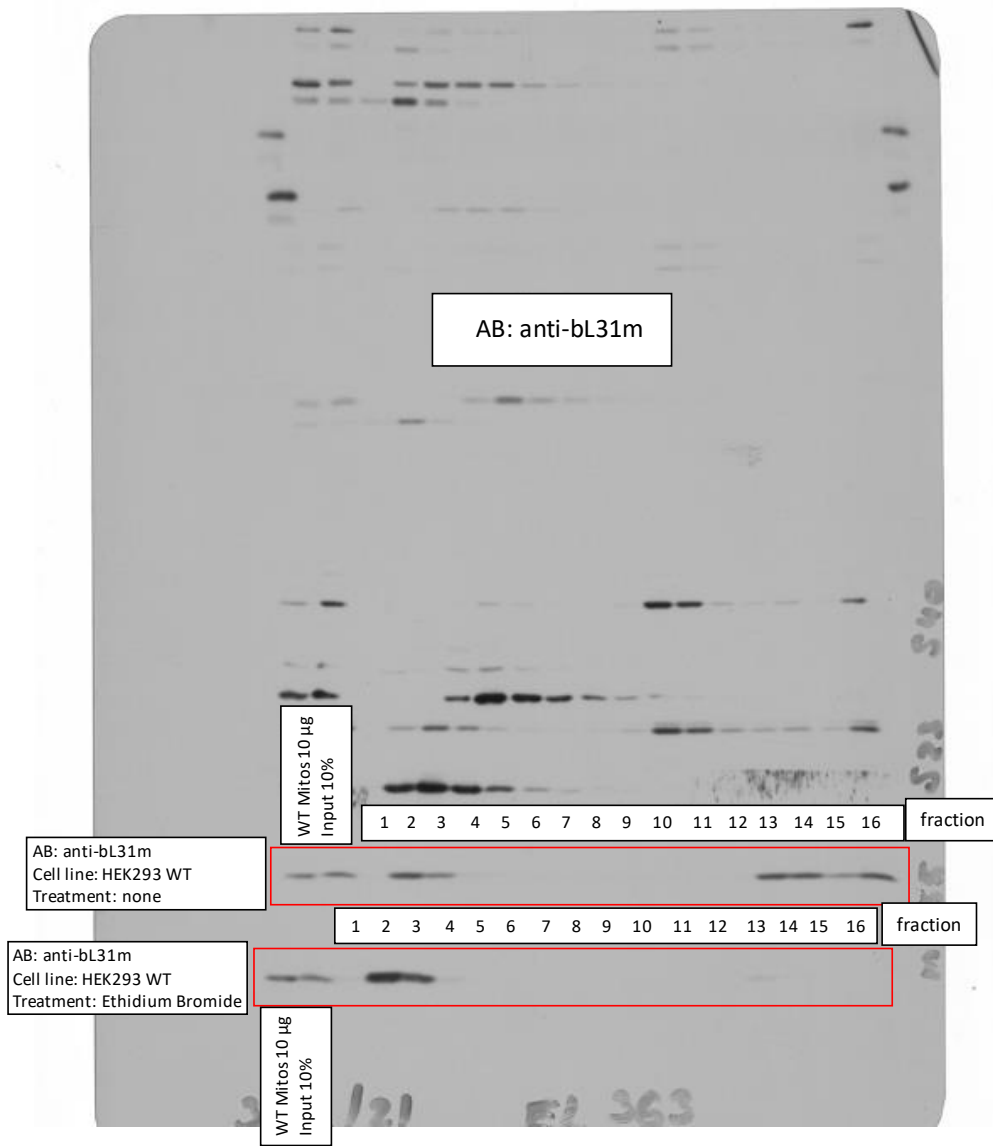
Speed: 158.000xg

Time: 15h



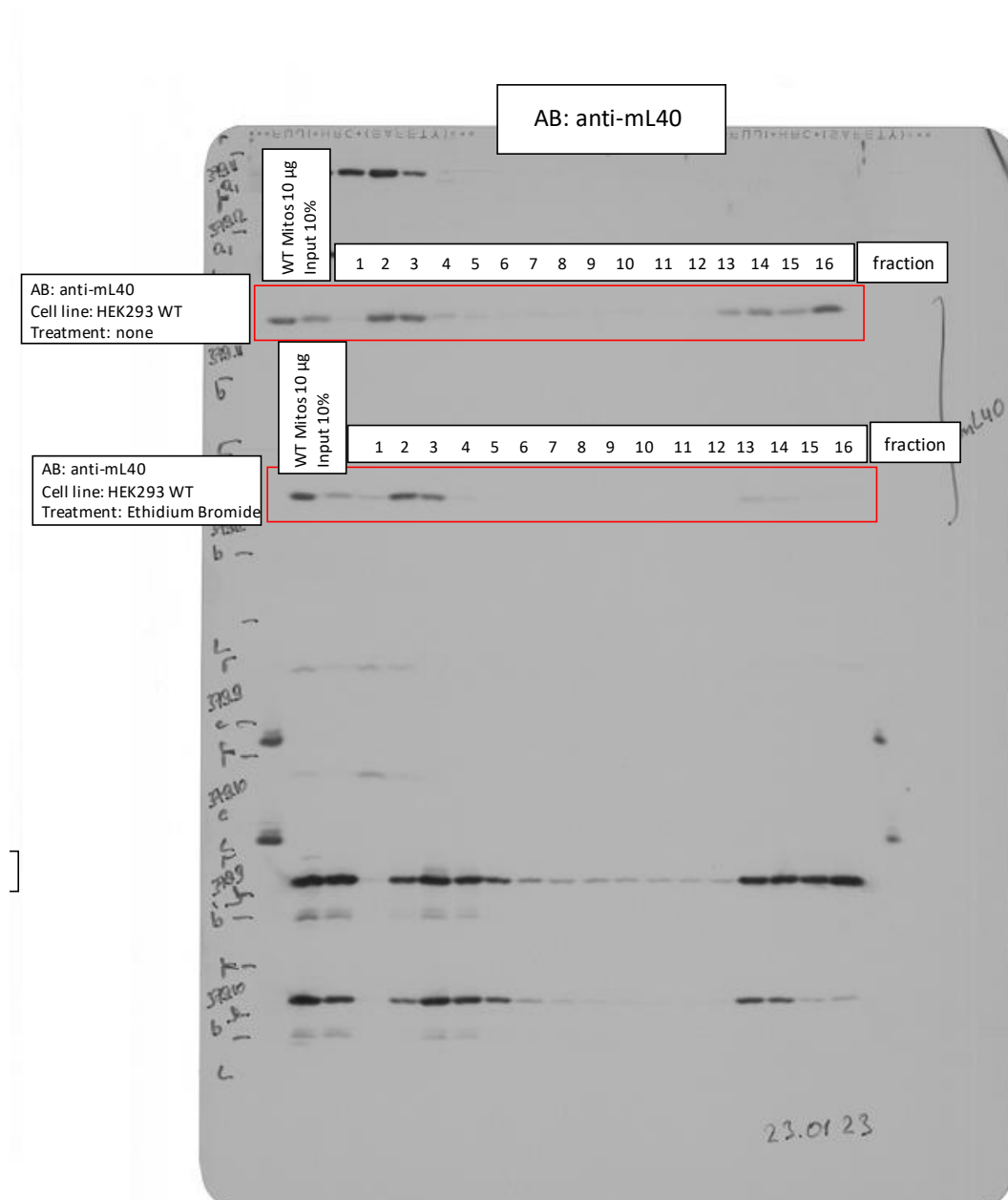
Source Data 3_related to Extended Data Fig.7c
EL#363 HEK293 WT + Ethidium Bromide treatment + Gradient
EL#379 HEK293 WT + Ethidium Bromide treatment + Gradient

Rotor: SW41 Ti
Gradient: Sucrose 5-30%
Speed: 158.000xg
Time: 15h



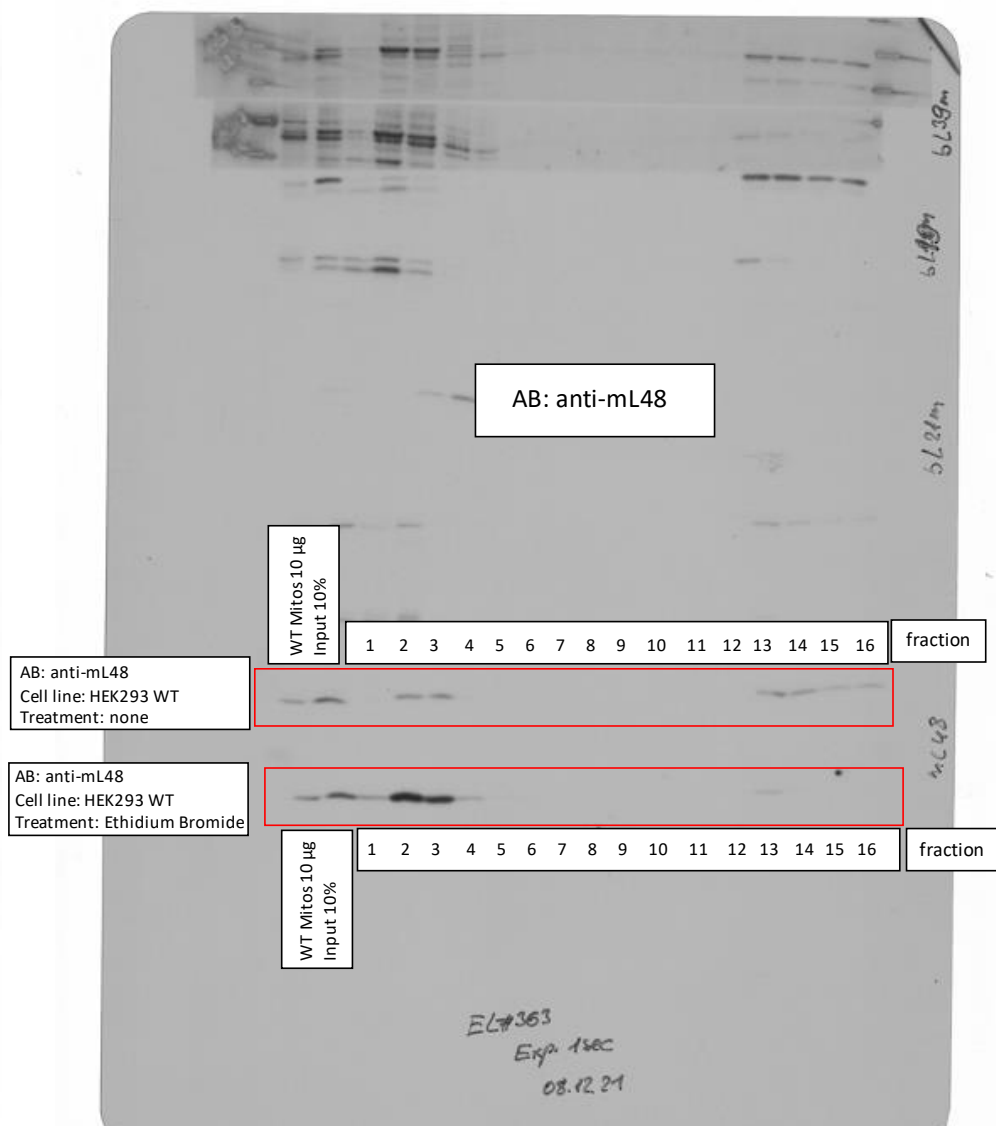
Source Data 3_related to Extended Data Fig.7c
EL#363 HEK293 WT + Ethidium Bromide treatment + Gradient
EL#379 HEK293 WT + Ethidium Bromide treatment + Gradient

Rotor: SW41 Ti
Gradient: Sucrose 5-30%
Speed: 158.000xg
Time: 15h



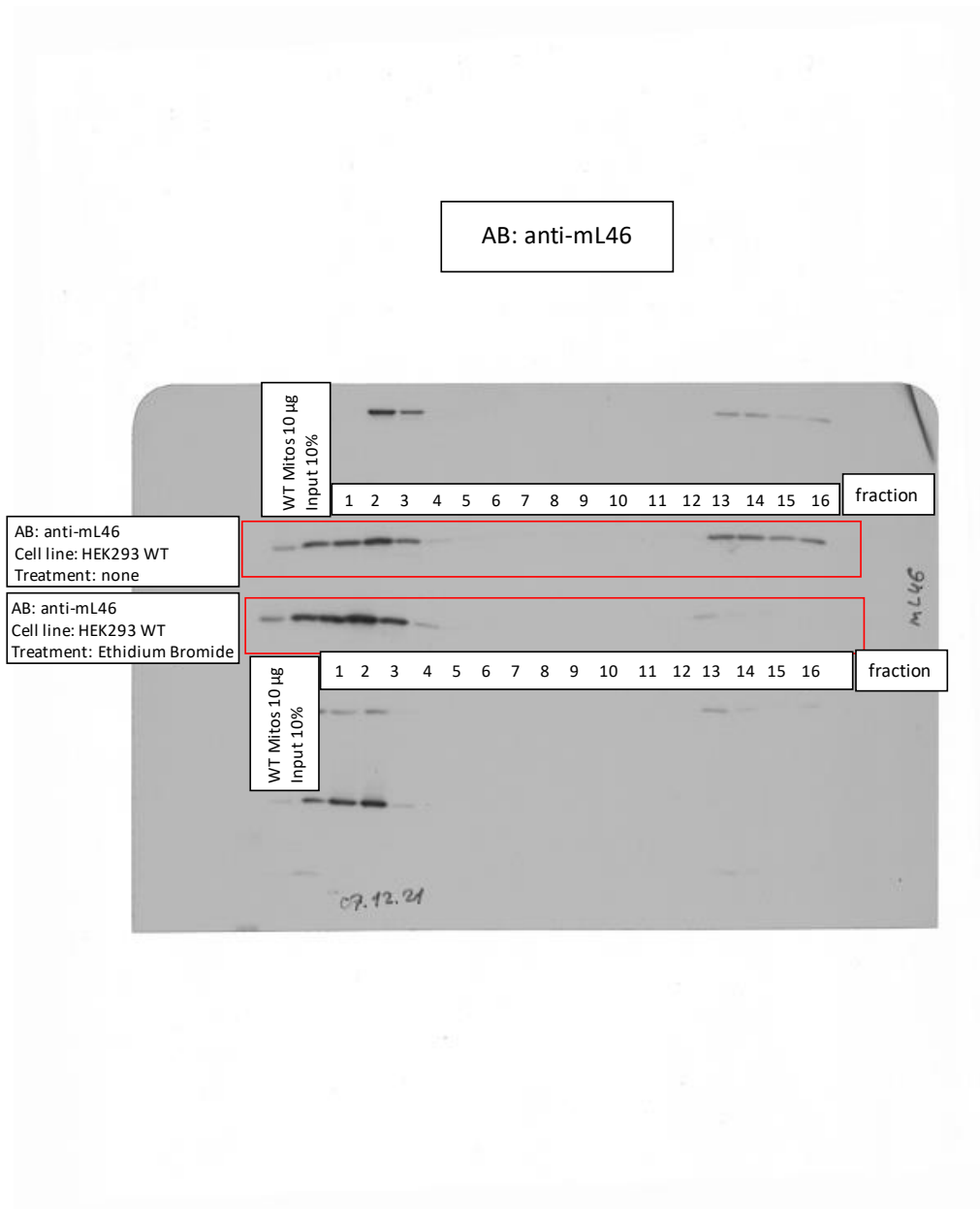
Source Data 3_related to Extended Data Fig.7c
 EL#363 HEK293 WT + Ethidium Bromide treatment + Gradient
 EL#379 HEK293 WT + Ethidium Bromide treatment + Gradient

Rotor: SW41 Ti
 Gradient: Sucrose 5-30%
 Speed: 158.000xg
 Time: 15h



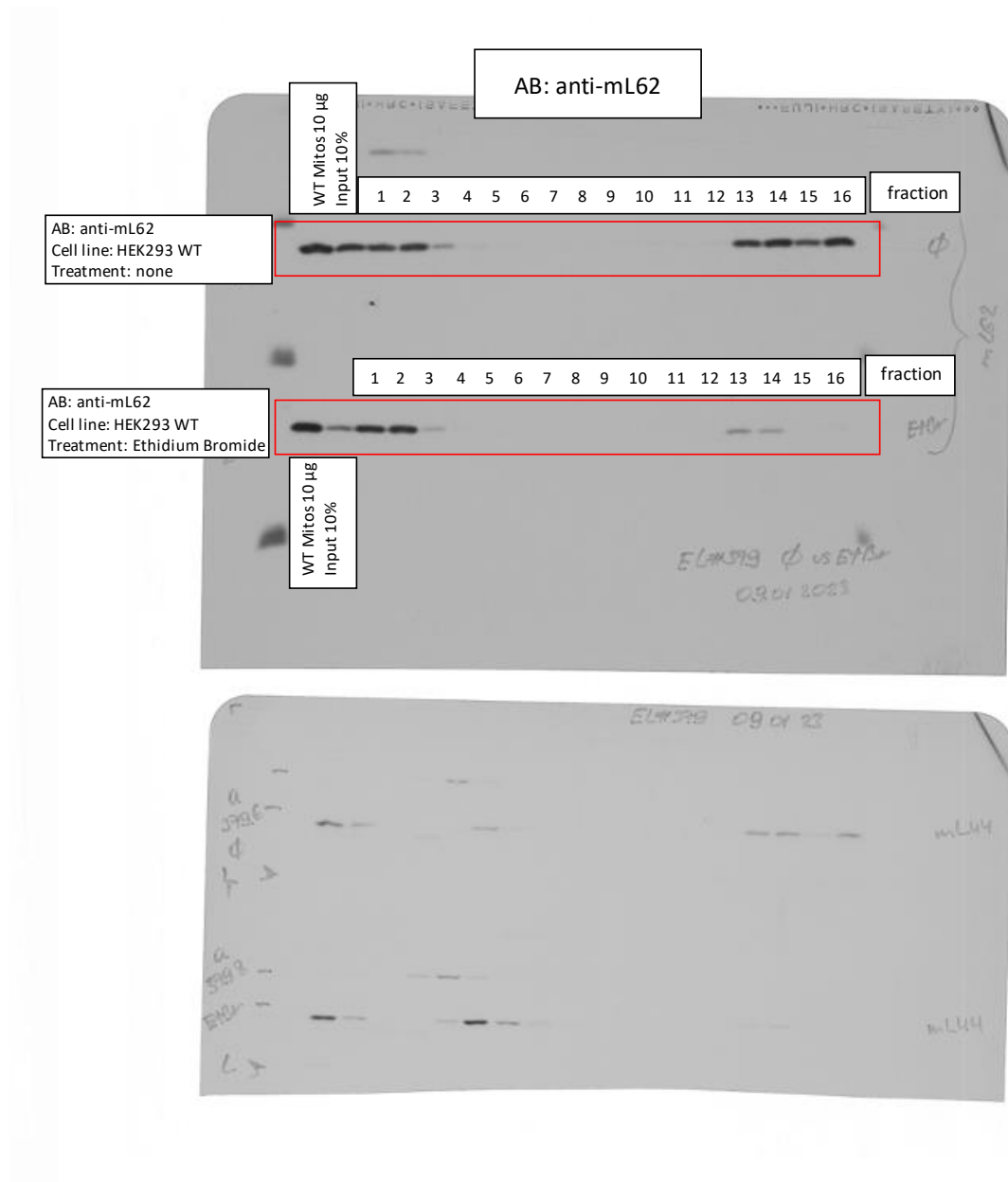
Source Data 3_related to Extended Data Fig.7c
EL#363 HEK293 WT + Ethidium Bromide treatment + Gradient
EL#379 HEK293 WT + Ethidium Bromide treatment + Gradient

Rotor: SW41 Ti
Gradient: Sucrose 5-30%
Speed: 158.000xg
Time: 15h



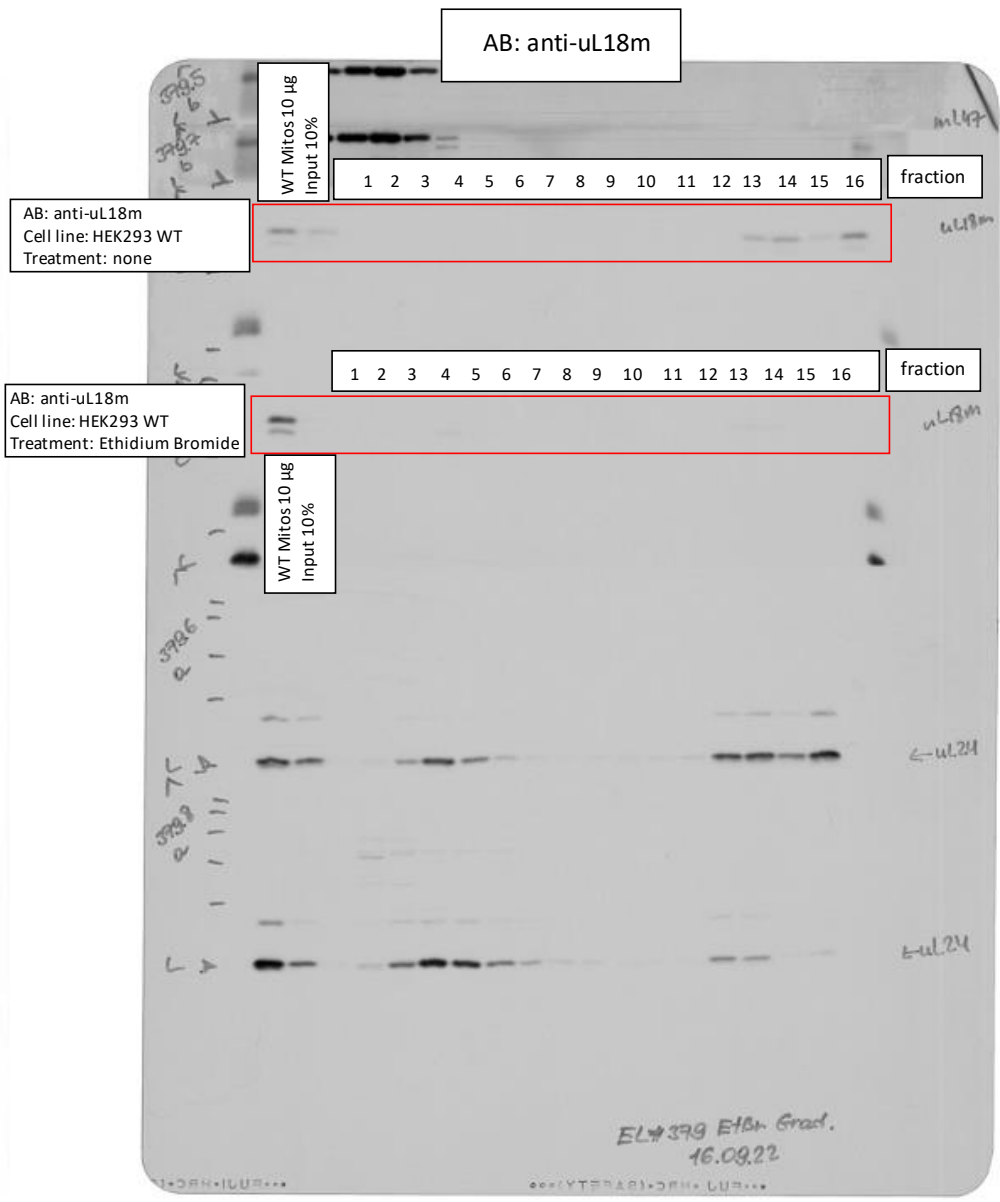
Source Data 3_related to Extended Data Fig.7c
EL#363 HEK293 WT + Ethidium Bromide treatment + Gradient
EL#379 HEK293 WT + Ethidium Bromide treatment + Gradient

Rotor: SW41 Ti
Gradient: Sucrose 5-30%
Speed: 158.000xg
Time: 15h



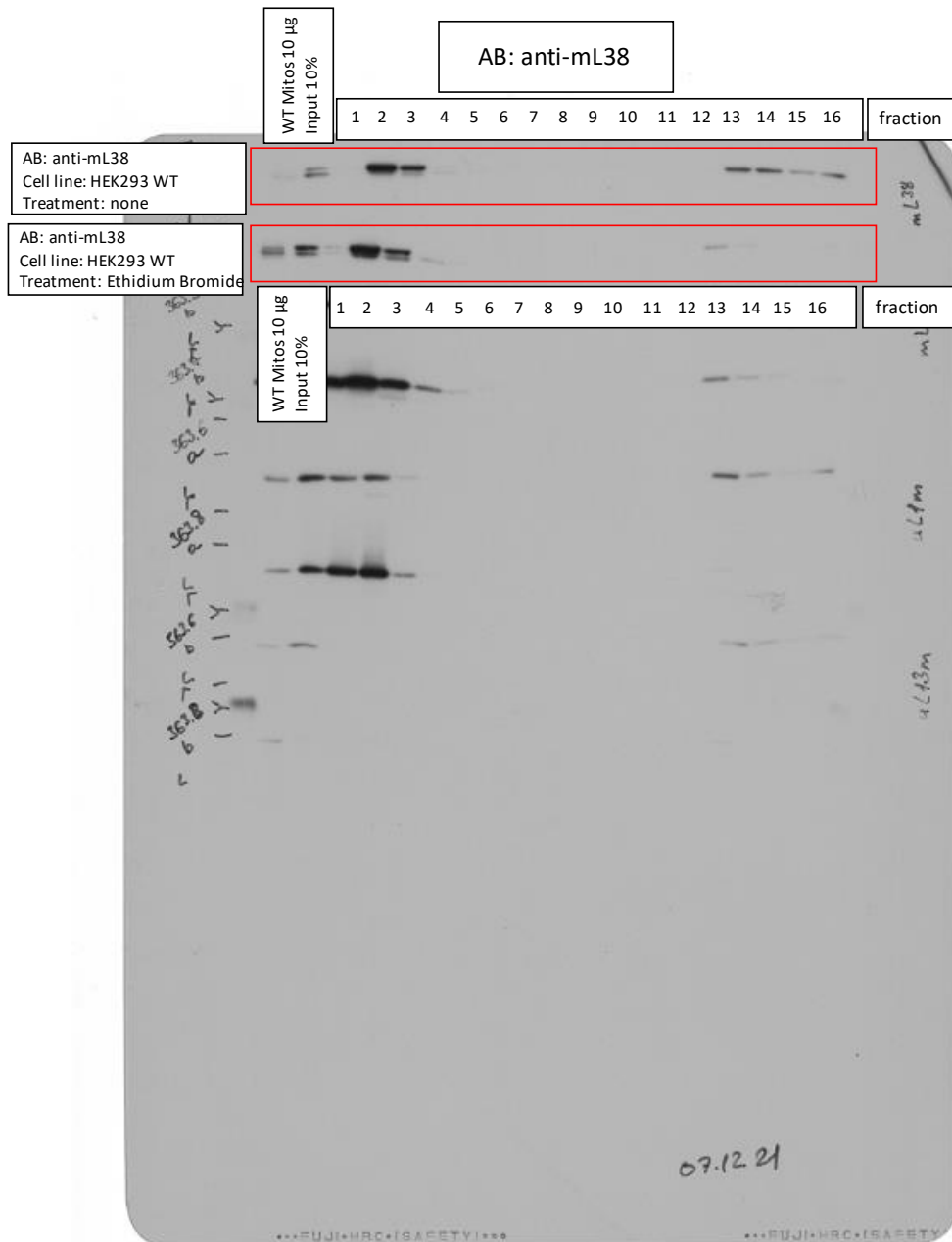
Source Data 3_related to Extended Data Fig.7c
EL#363 HEK293 WT + Ethidium Bromide treatment + Gradient
EL#379 HEK293 WT + Ethidium Bromide treatment + Gradient

Rotor: SW41 Ti
Gradient: Sucrose 5-30%
Speed: 158.000xg
Time: 15h



Source Data 3_related to Extended Data Fig.7c
 EL#363 HEK293 WT + Ethidium Bromide treatment + Gradient
 EL#379 HEK293 WT + Ethidium Bromide treatment + Gradient

Rotor: SW41 Ti
 Gradient: Sucrose 5-30%
 Speed: 158.000xg
 Time: 15h



Source Data 3_related to Extended Data Fig.7d

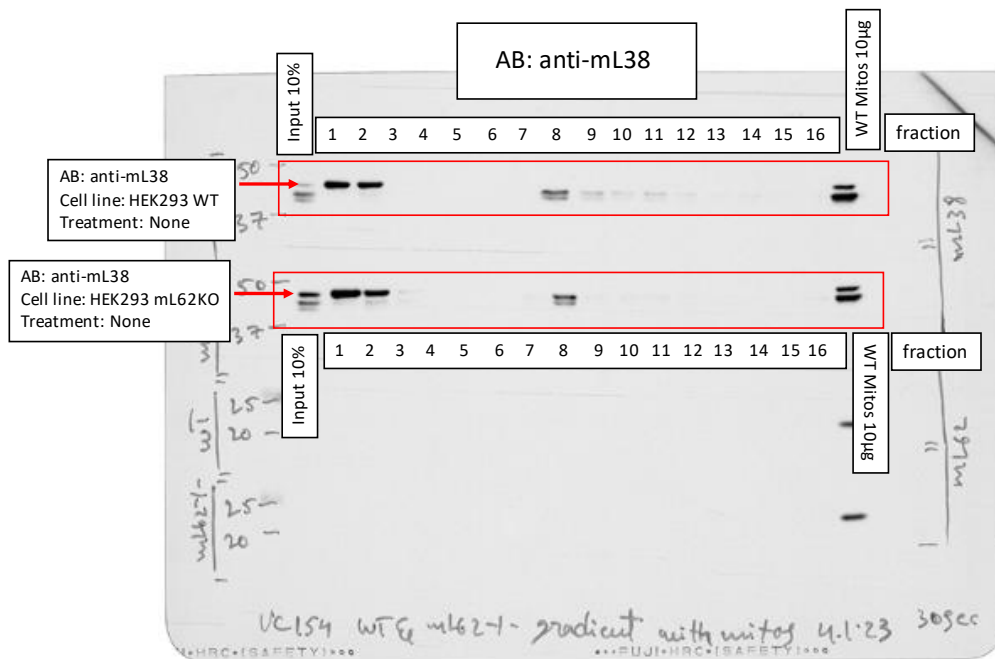
VC#154 HEK293 WT vs. HEK293 mL62 KO

Rotor: SW41 Ti

Gradient: Sucrose 5-30%

Speed: 21500xg

Time: 15h



Source Data 3_related to Extended Data Fig.7d

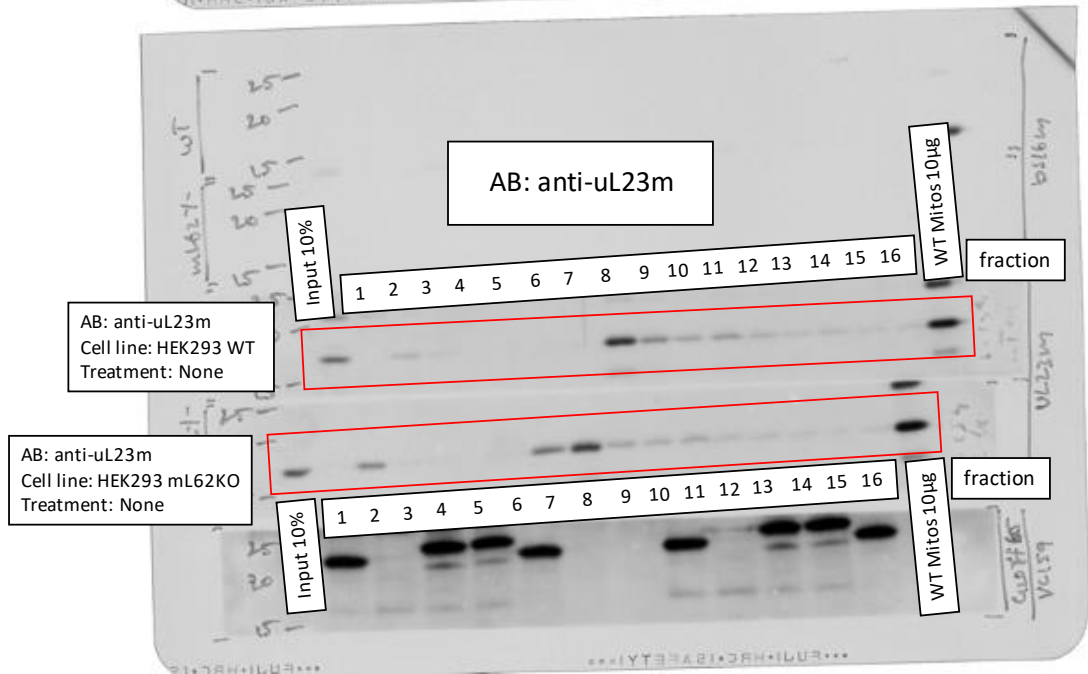
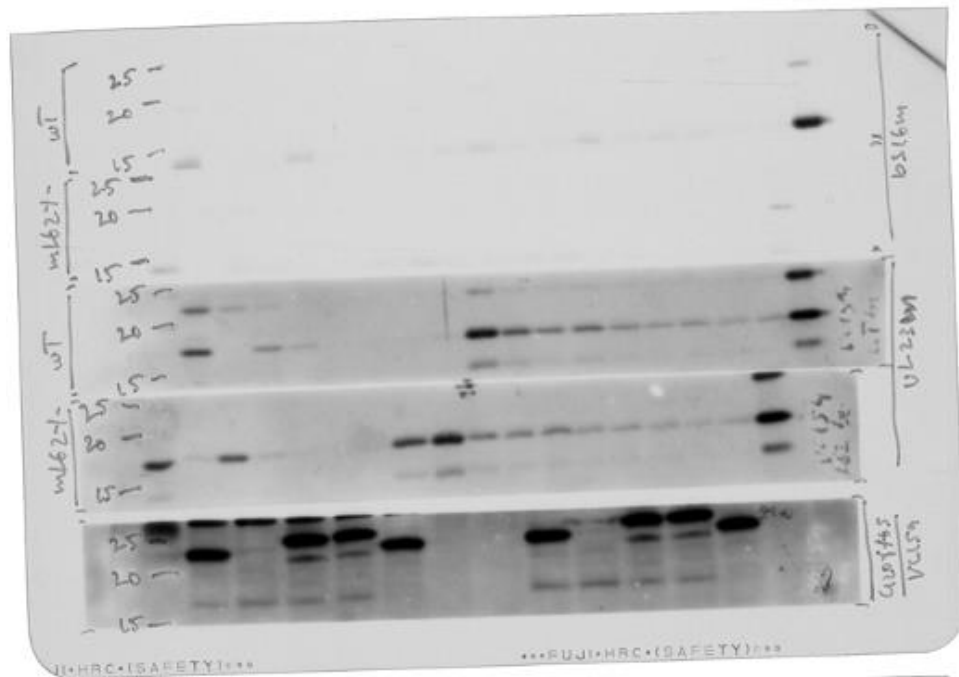
VC#154 HEK293 WT vs. HEK293 mL62 KO

Rotor: SW41 Ti

Gradient: Sucrose 5-30%

Speed: 21500xg

Time: 15h



Source Data 3_related to Extended Data Fig.7d

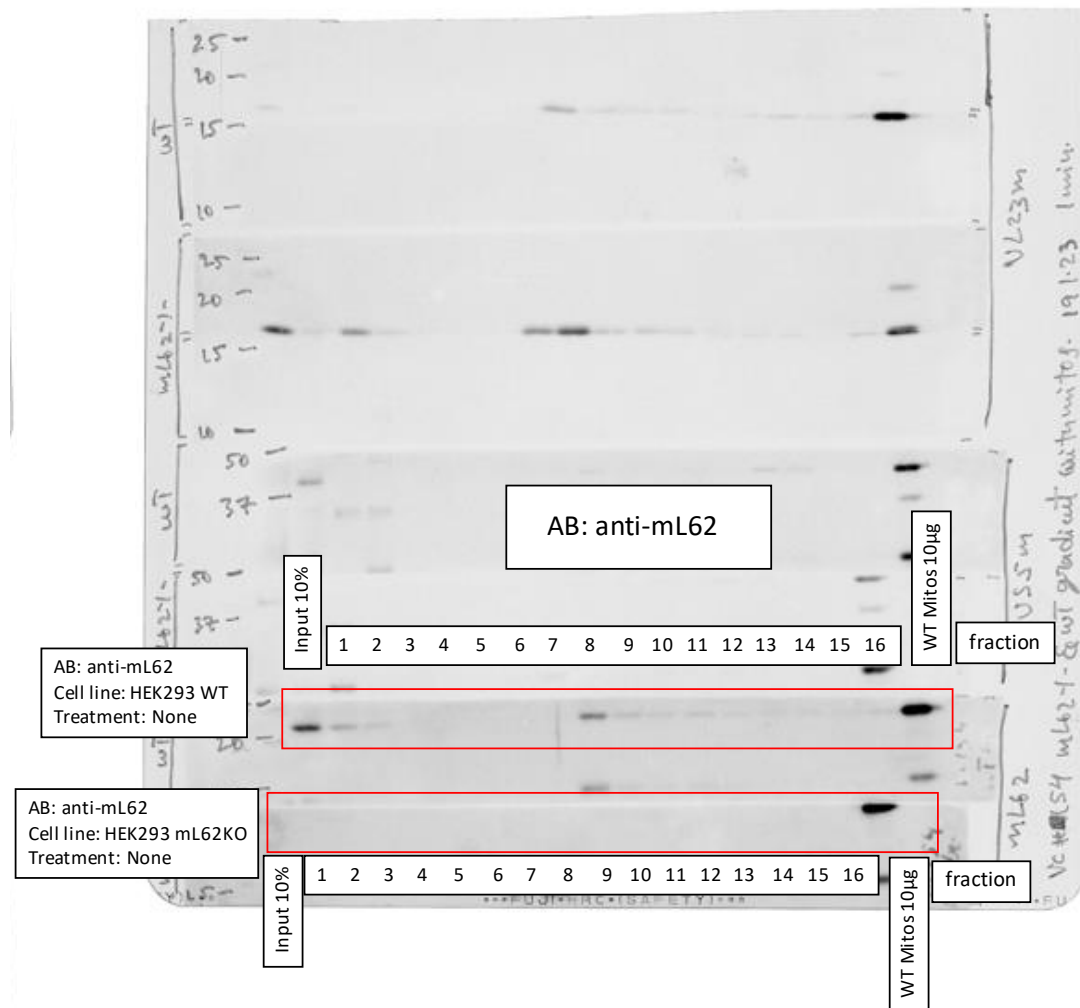
VC#154 HEK293 WT vs. HEK293 mL62 KO

Rotor: SW41 Ti

Gradient: Sucrose 5-30%

Speed: 21500xg

Time: 15h



Source Data 3_related to Extended Data Fig.7d

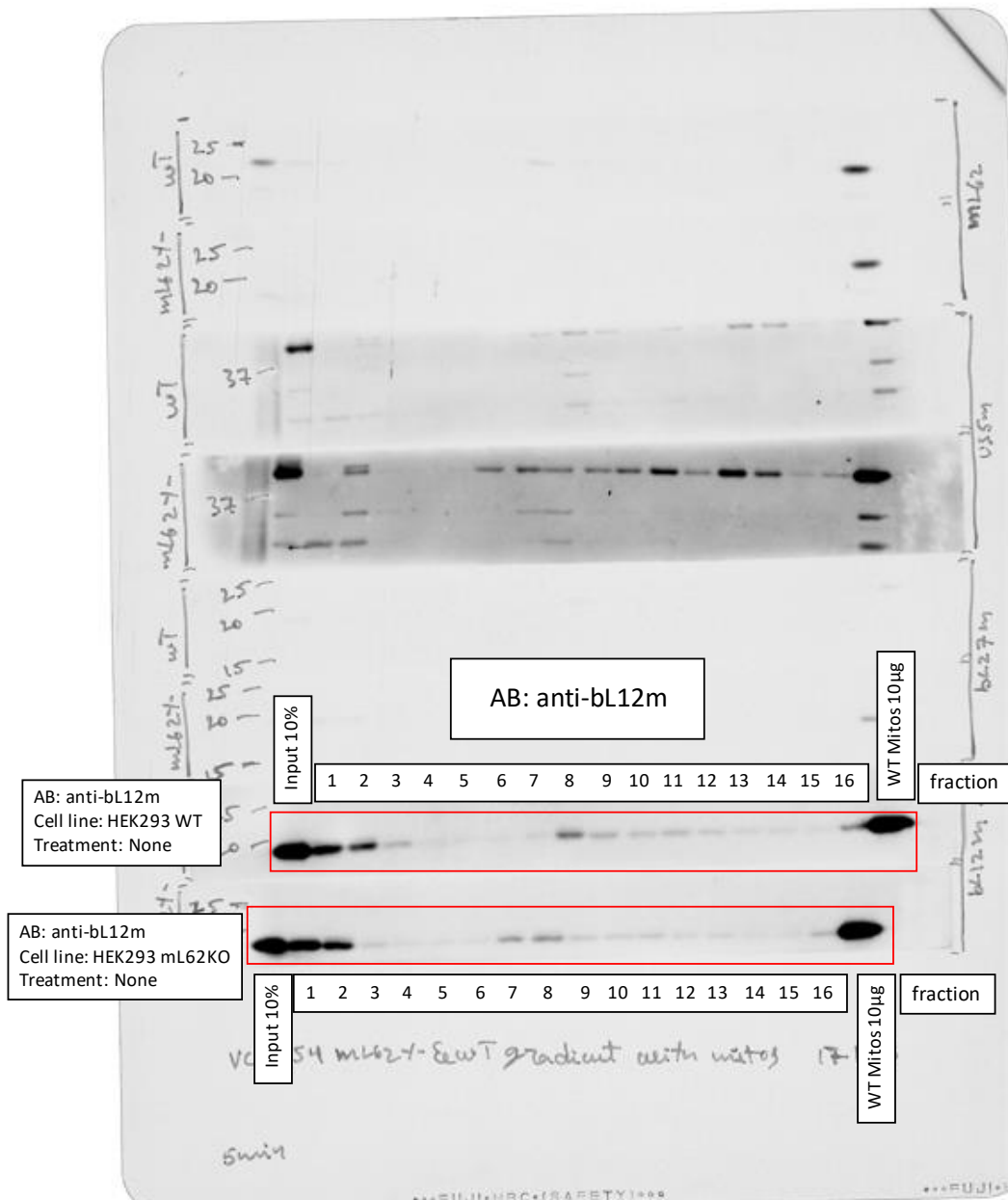
VC#154 HEK293 WT vs. HEK293 mL62 KO

Rotor: SW41 Ti

Gradient: Sucrose 5-30%

Speed: 21500xg

Time: 15h



Source Data 3_related to Extended Data Fig.7d

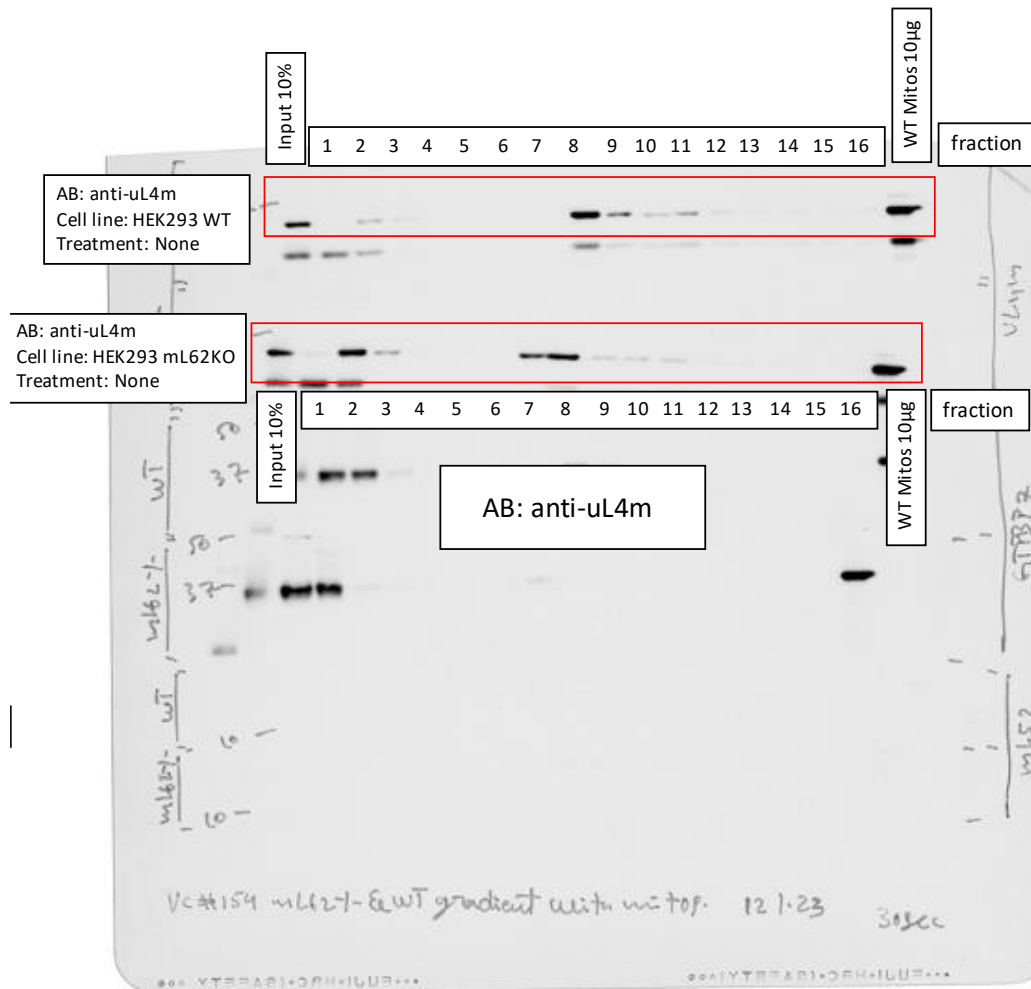
VC#154 HEK293 WT vs. HEK293 mL62 KO

Rotor: SW41 Ti

Gradient: Sucrose 5-30%

Speed: 21500xg

Time: 15h



Source Data 3_related to Extended Data Fig.7d

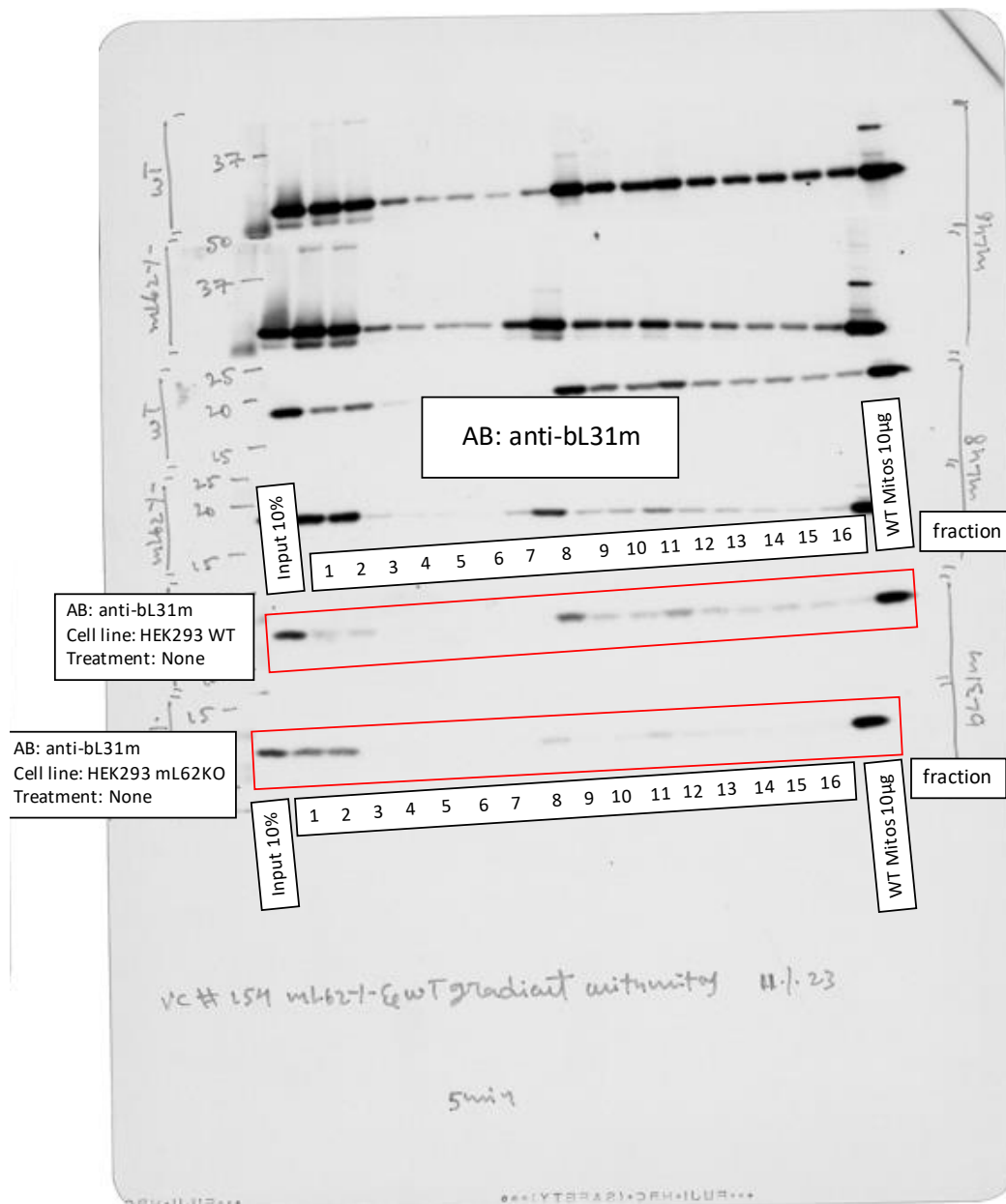
VC#154 HEK293 WT vs. HEK293 mL62 KO

Rotor: SW41 Ti

Gradient: Sucrose 5-30%

Speed: 21500xg

Time: 15h



Source Data 3_related to Extended Data Fig.7d

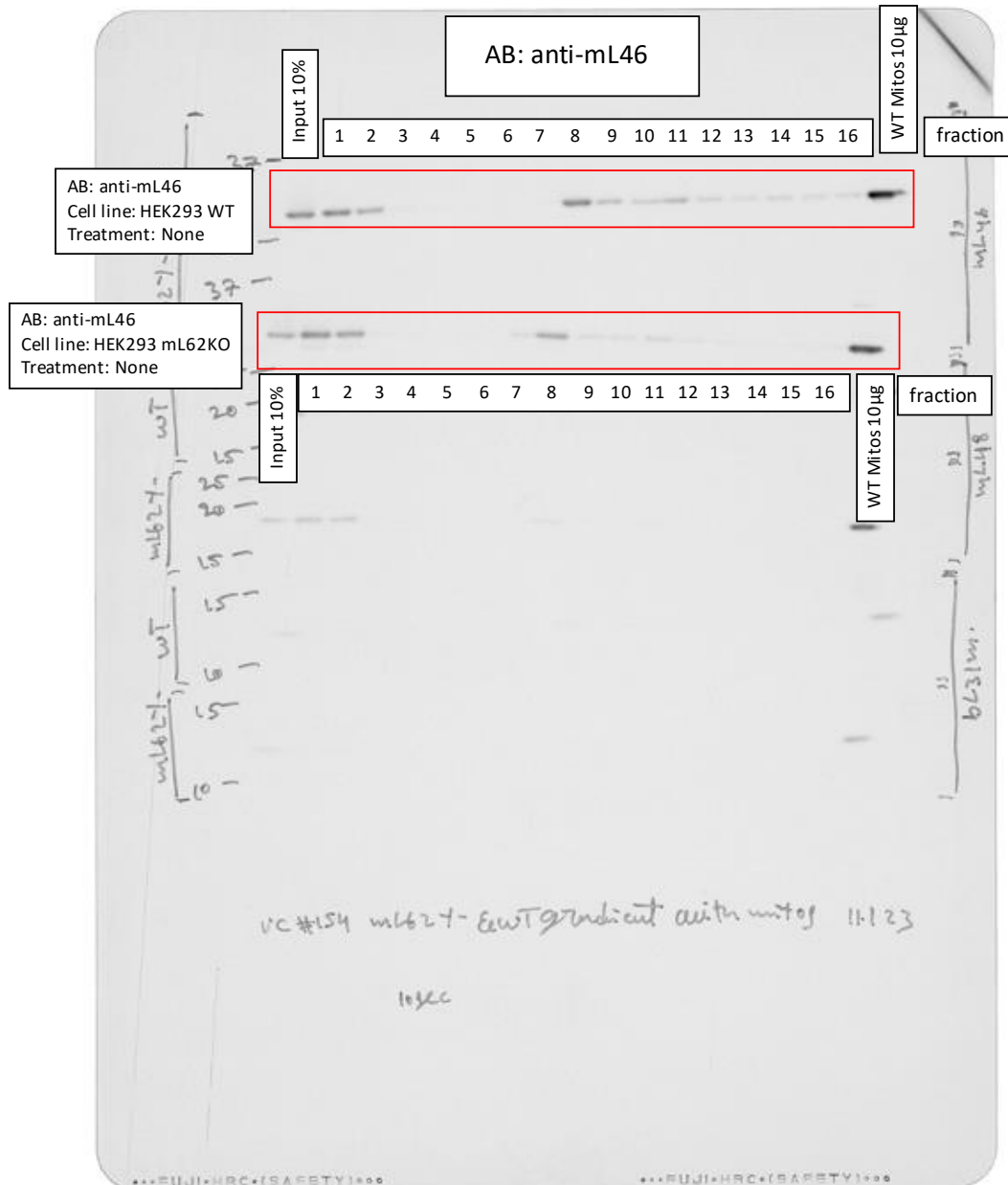
VC#154 HEK293 WT vs. HEK293 mL62 KO

Rotor: SW41 Ti

Gradient: Sucrose 5-30%

Speed: 21500xg

Time: 15h



Source Data 3_related to Extended Data Fig.7d

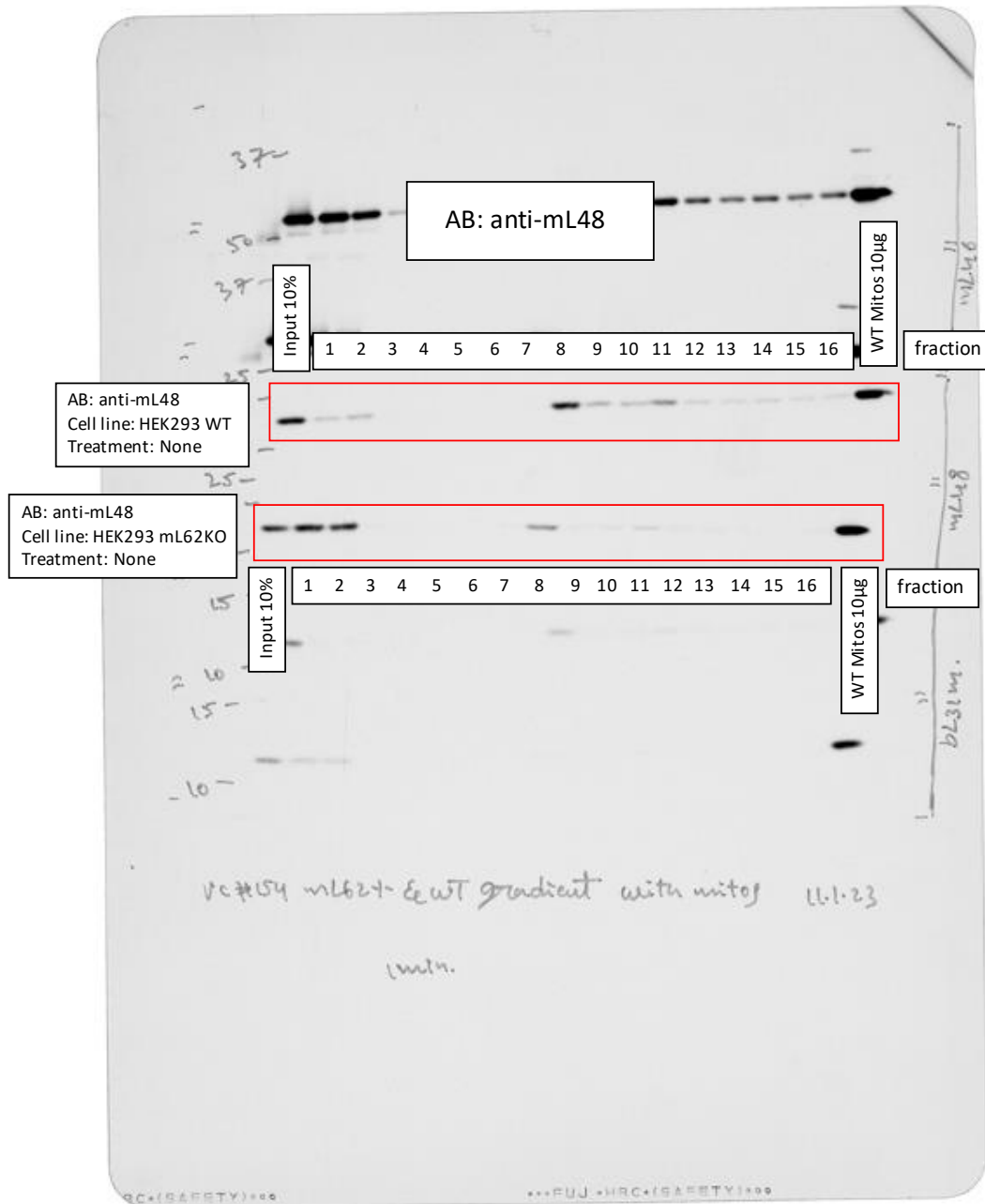
VC#154 HEK293 WT vs. HEK293 mL62 KO

Rotor: SW41 Ti

Gradient: Sucrose 5-30%

Speed: 21500xg

Time: 15h



Source Data 3_related to Extended Data Fig.7d

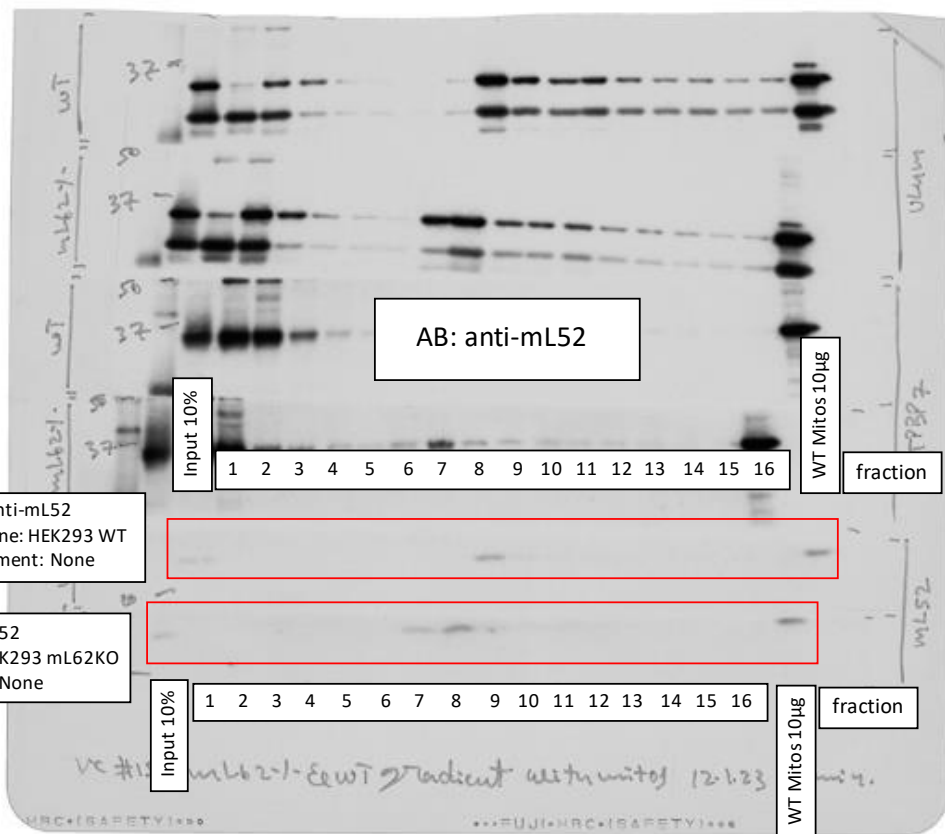
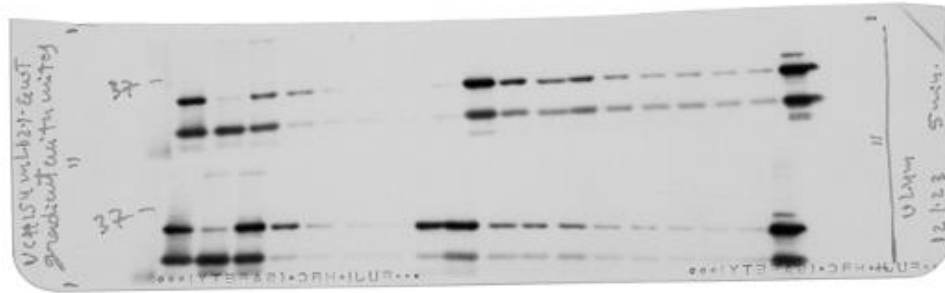
VC#154 HEK293 WT vs. HEK293 mL62 KO

Rotor: SW41 Ti

Gradient: Sucrose 5-30%

Speed: 21500xg

Time: 15h



Source Data 3_related to Extended Data Fig.7d

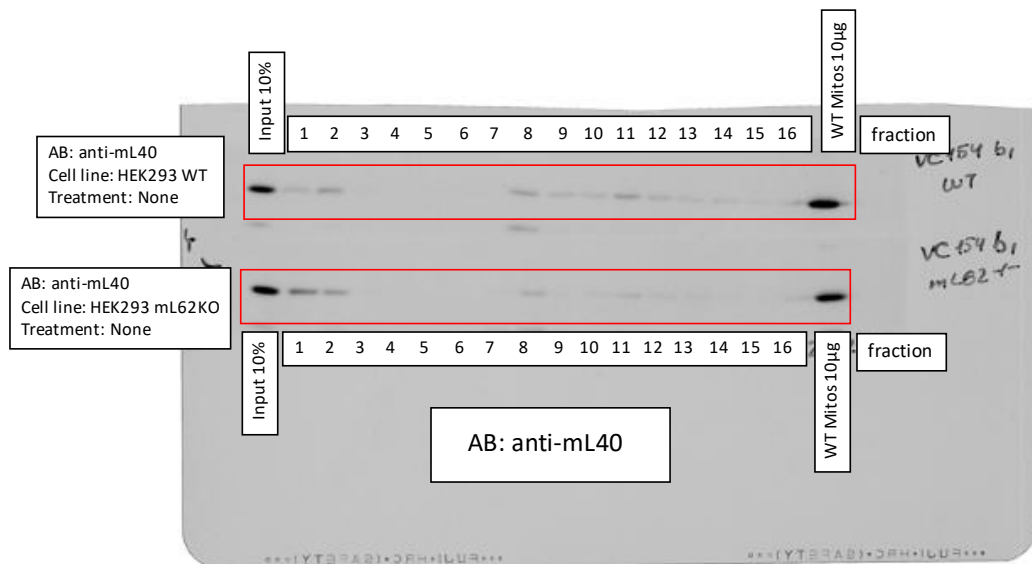
VC#154 HEK293 WT vs. HEK293 mL62 KO

Rotor: SW41 Ti

Gradient: Sucrose 5-30%

Speed: 21500xg

Time: 15h



Source Data 3_related to Extended Data Fig.7d

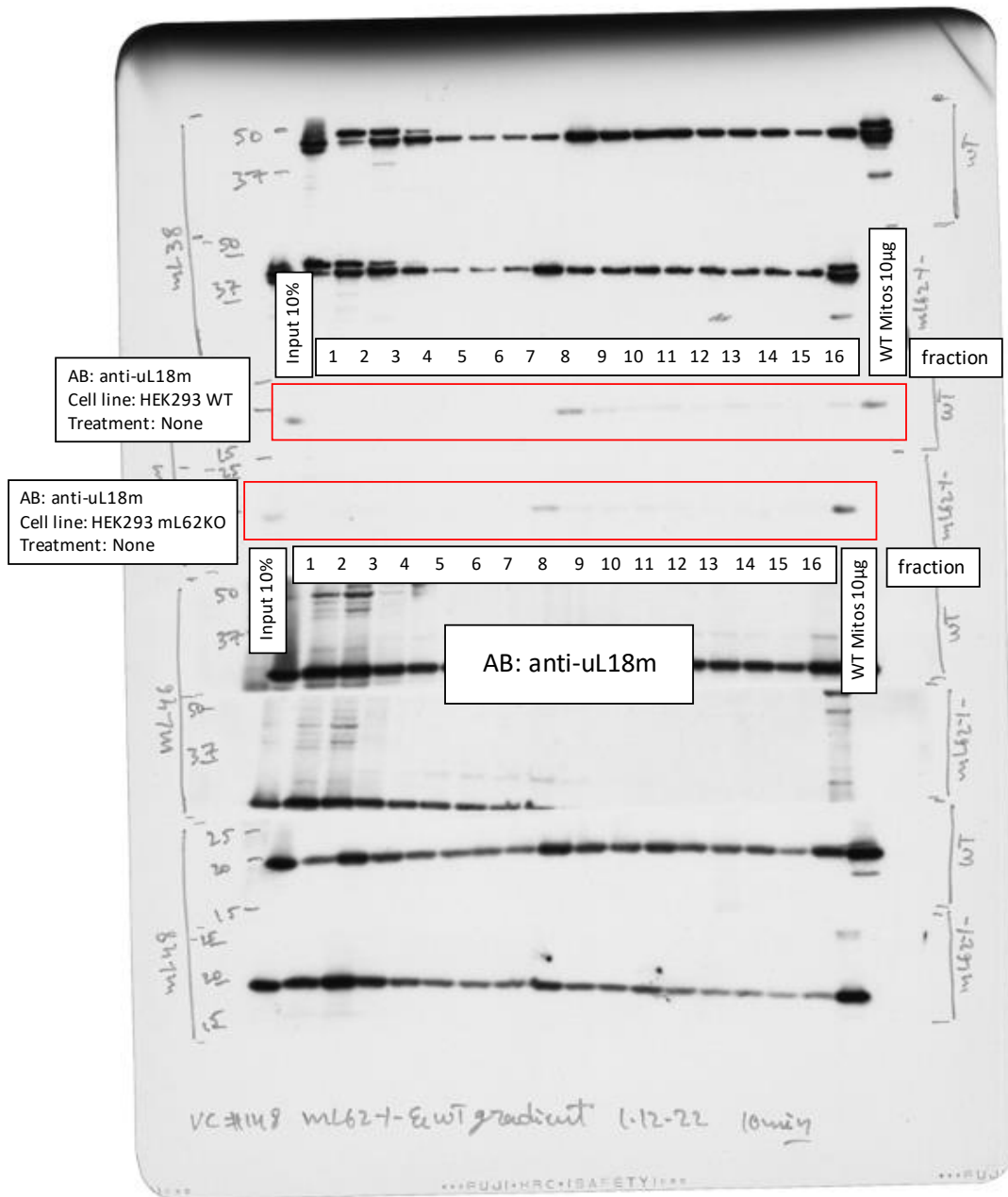
VC#154 HEK293 WT vs. HEK293 mL62 KO

Rotor: SW41 Ti

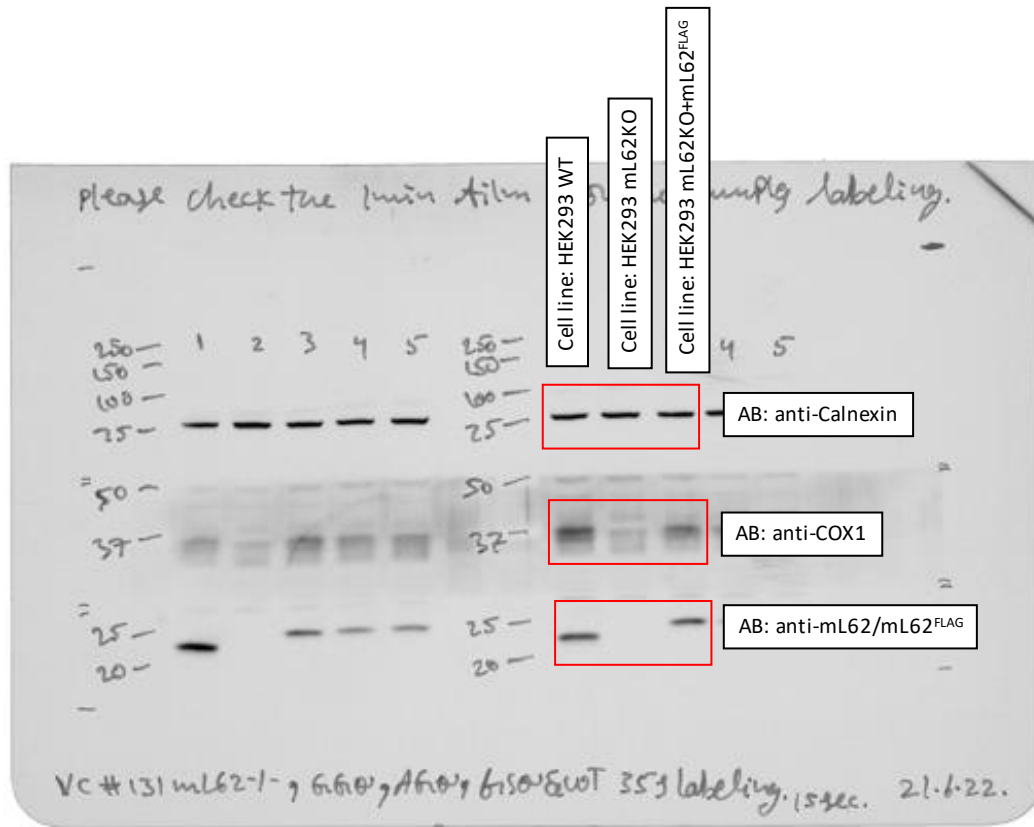
Gradient: Sucrose 5-30%

Speed: 21500xg

Time: 15h



Source Data 3_related to Extended Data Fig.7e
 VC#131 mL62KO and mL62KO +mL62FLAG 35S methionin labeling
 Concentration of Radio activity: 200 μ Ci/mL
 Incubation Time: 1h



Source Data 3_related to Extended Data Fig.7e
VC#131 mL62KO and mL62KO +mL62FLAG 35S methionin labeling
Concentration of Radio activity: 200 μ Ci/mL
Incubation Time: 1h

