

Source Data 4\_related to Extended Data Fig.8a

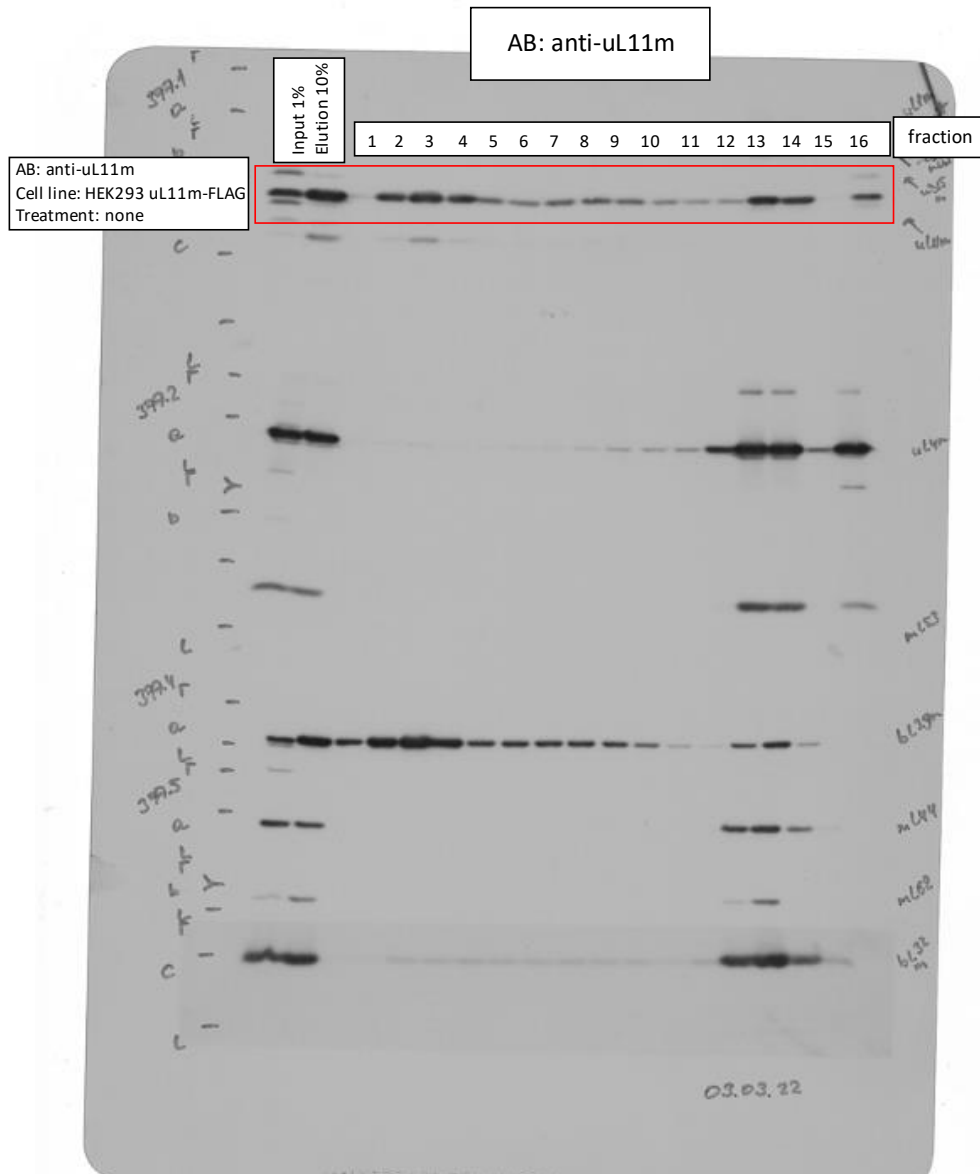
EL#377.1-3 uL11m-FLAG IP + Gradient

Rotor: SW41 Ti

Gradient: Sucrose 5-30%

Speed: 158.000xg

Time: 15h



Source Data 4\_related to Extended Data Fig.8a

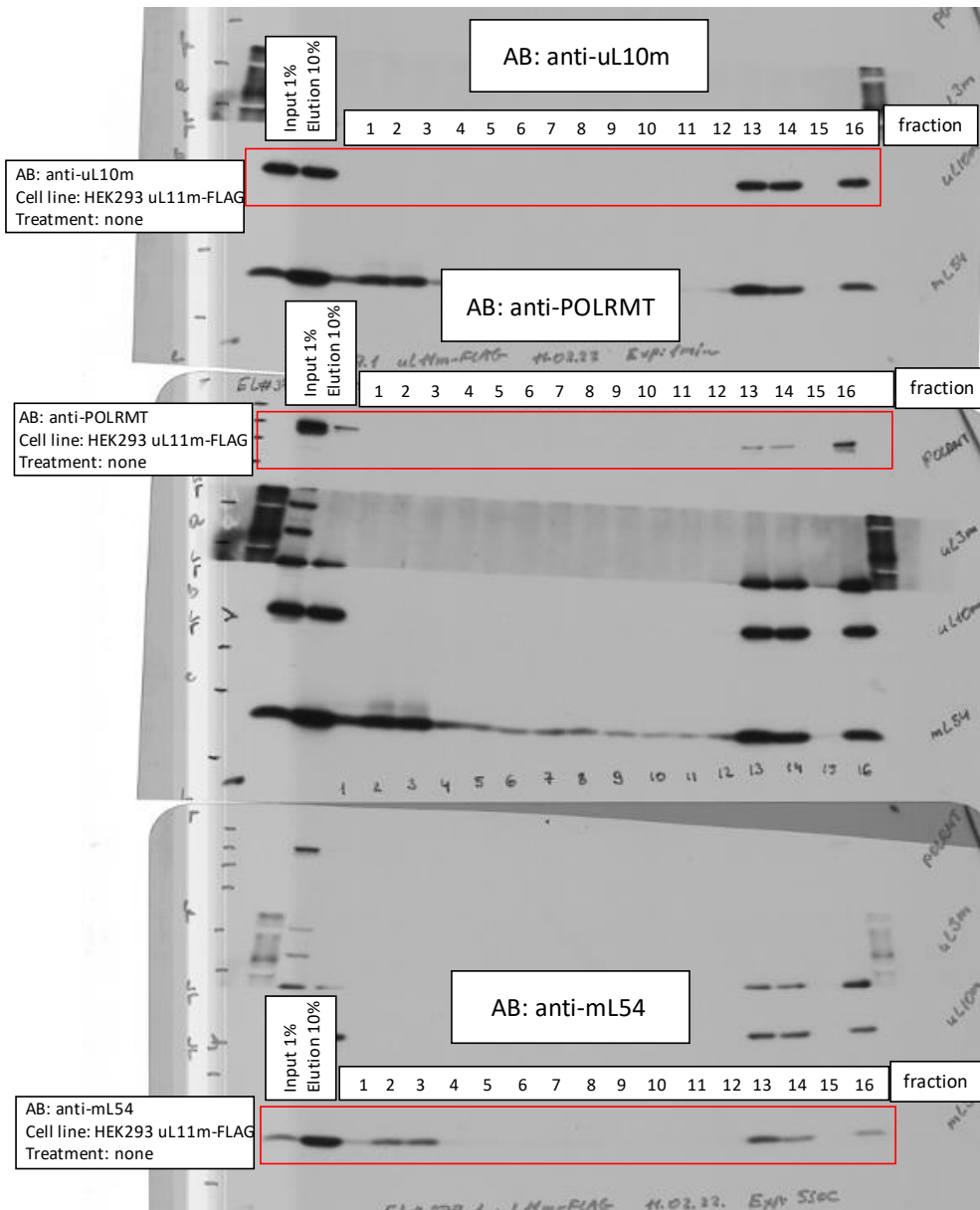
EL#377.1-3 uL11m-FLAG IP + Gradient

Rotor: SW41 Ti

Gradient: Sucrose 5-30%

Speed: 158.000xg

Time: 15h



Source Data 4\_related to Extended Data Fig.8a

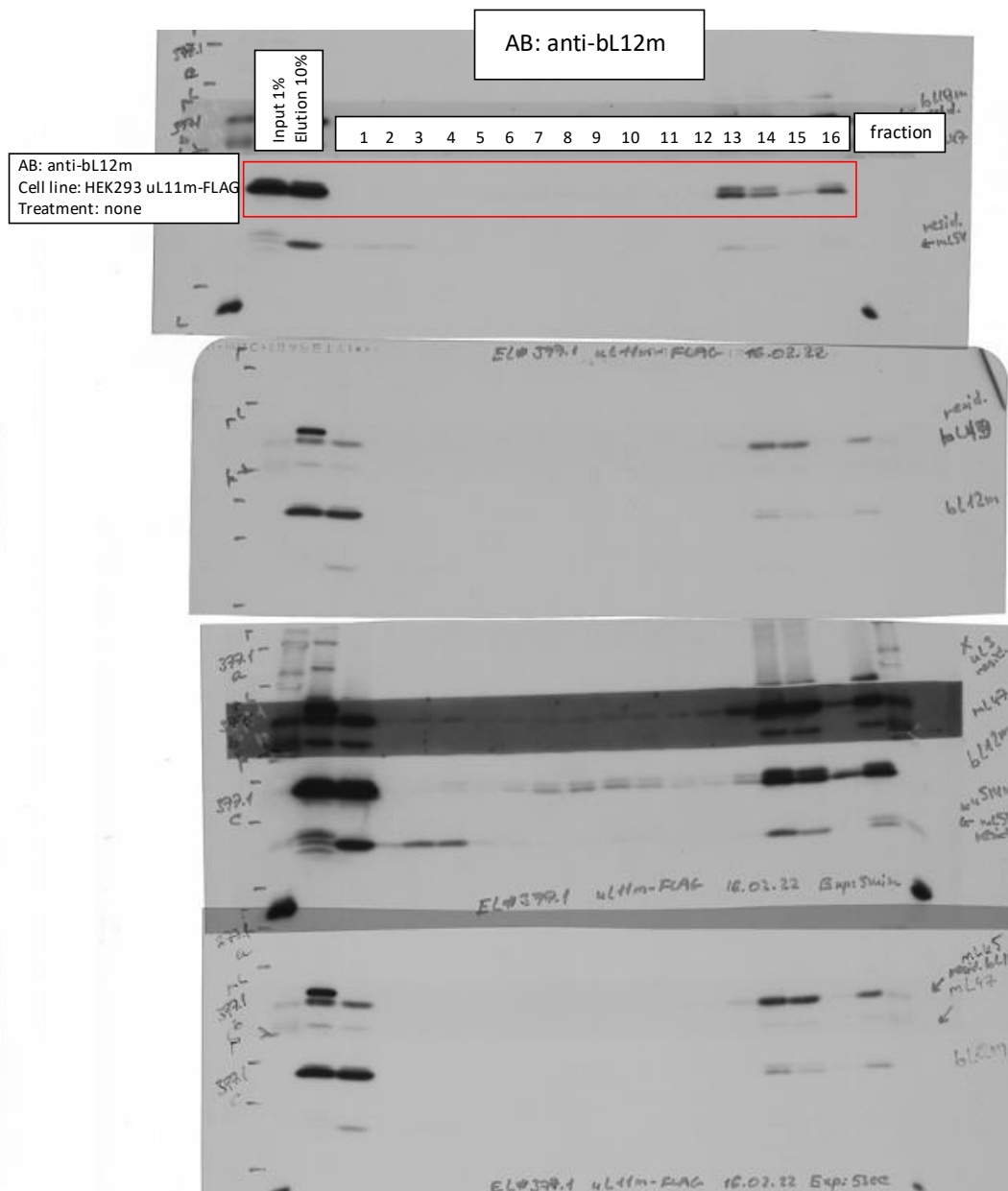
EL#377.1-3 uL11m-FLAG IP + Gradient

Rotor: SW41 Ti

Gradient: Sucrose 5-30%

Speed: 158.000xg

Time: 15h



Source Data 4\_related to Extended Data Fig.8a

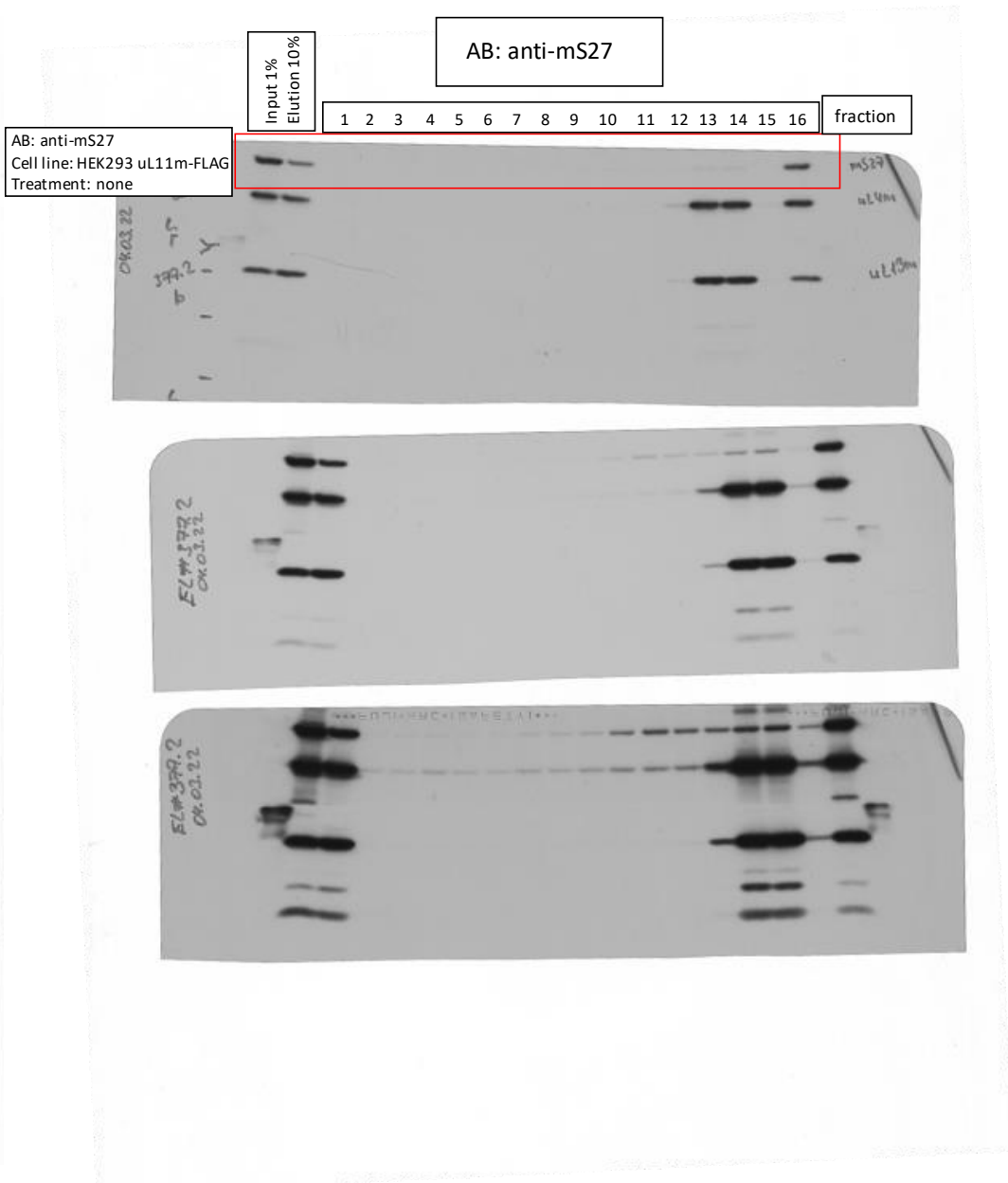
EL#377.1-3 uL11m-FLAG IP + Gradient

Rotor: SW41 Ti

Gradient: Sucrose 5-30%

Speed: 158.000xg

Time: 15h



Source Data 4\_related to Extended Data Fig.8a

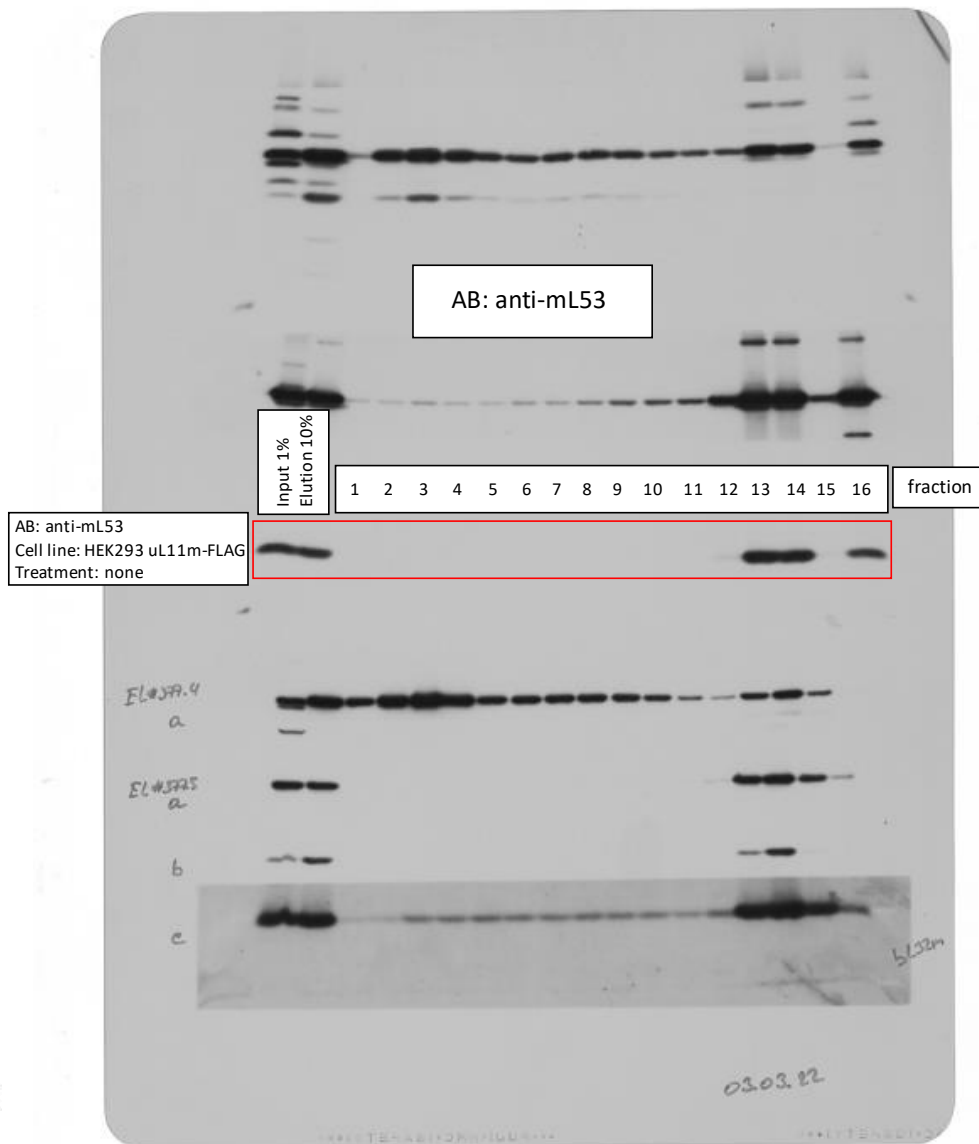
EL#377.1-3 uL11m-FLAG IP + Gradient

Rotor: SW41 Ti

Gradient: Sucrose 5-30%

Speed: 158.000xg

Time: 15h



Source Data 4\_related to Extended Data Fig.8a

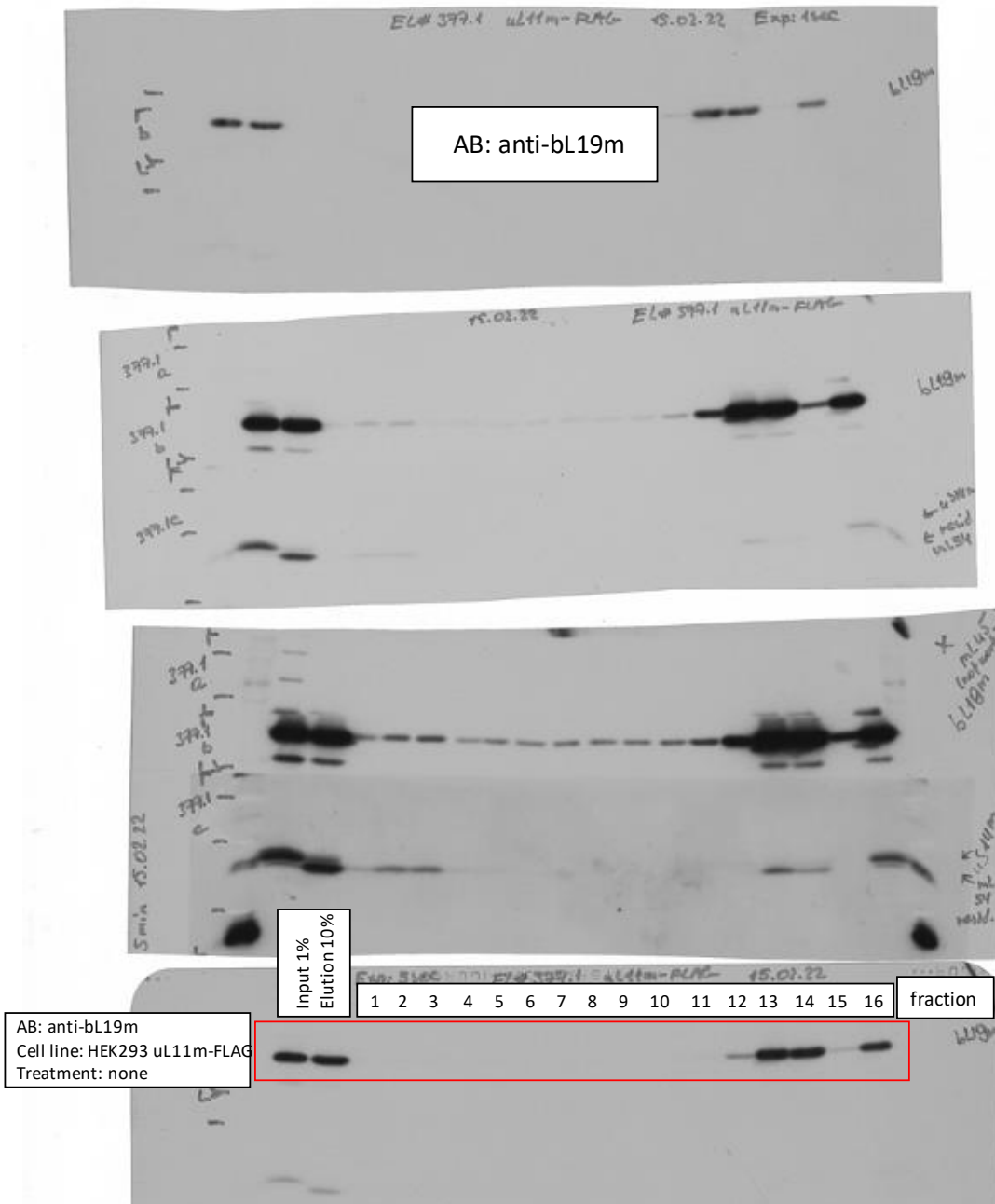
EL#377.1-3 uL11m-FLAG IP + Gradient

Rotor: SW41 Ti

Gradient: Sucrose 5-30%

Speed: 158.000xg

Time: 15h



Source Data 4\_related to Extended Data Fig.8b

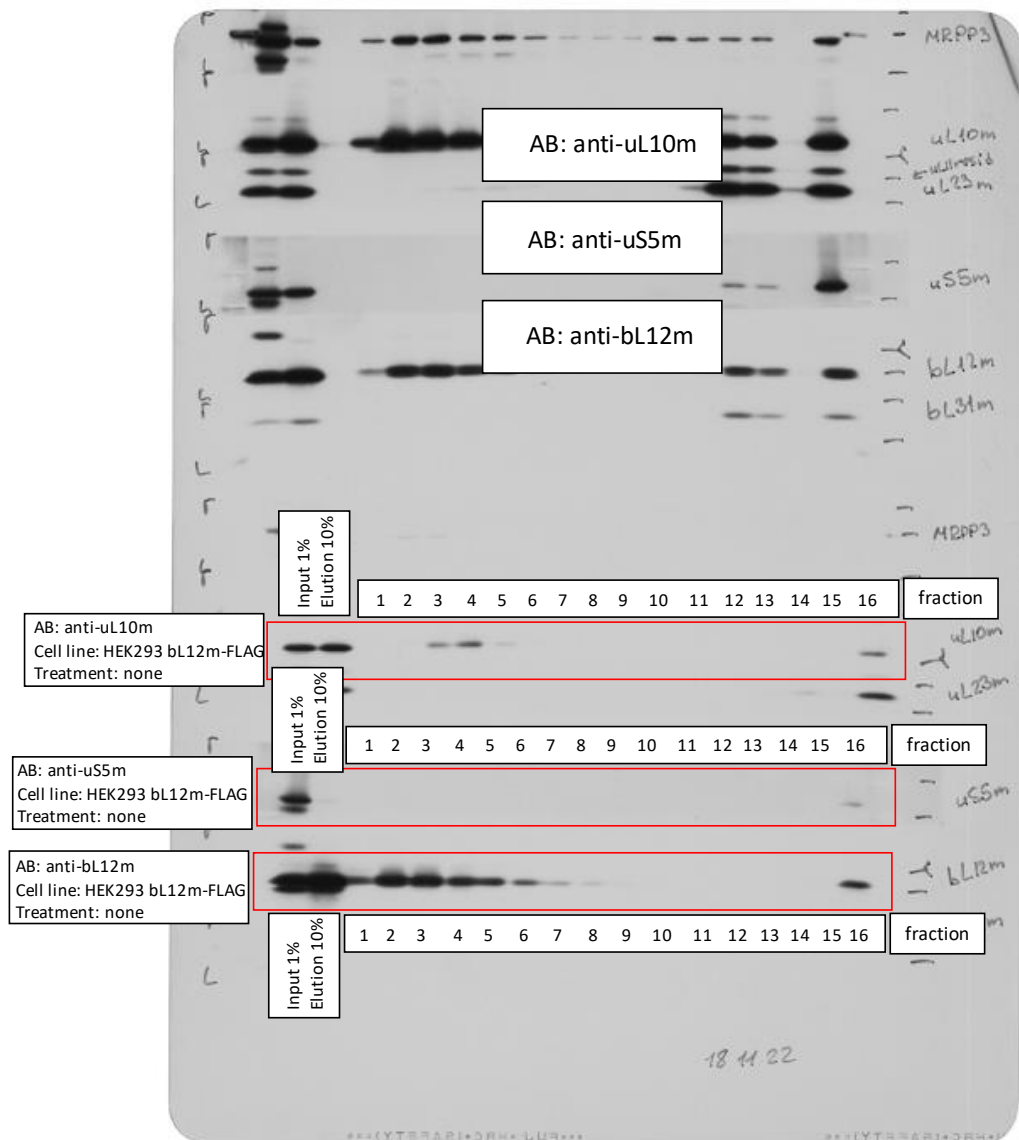
EL#412.4-6 bL12m-FLAG IP + Gradient

Rotor: SW41 Ti

Gradient: Sucrose 5-30%

Speed: 158.000xg

Time: 15h



Source Data 4\_related to Extended Data Fig.8b

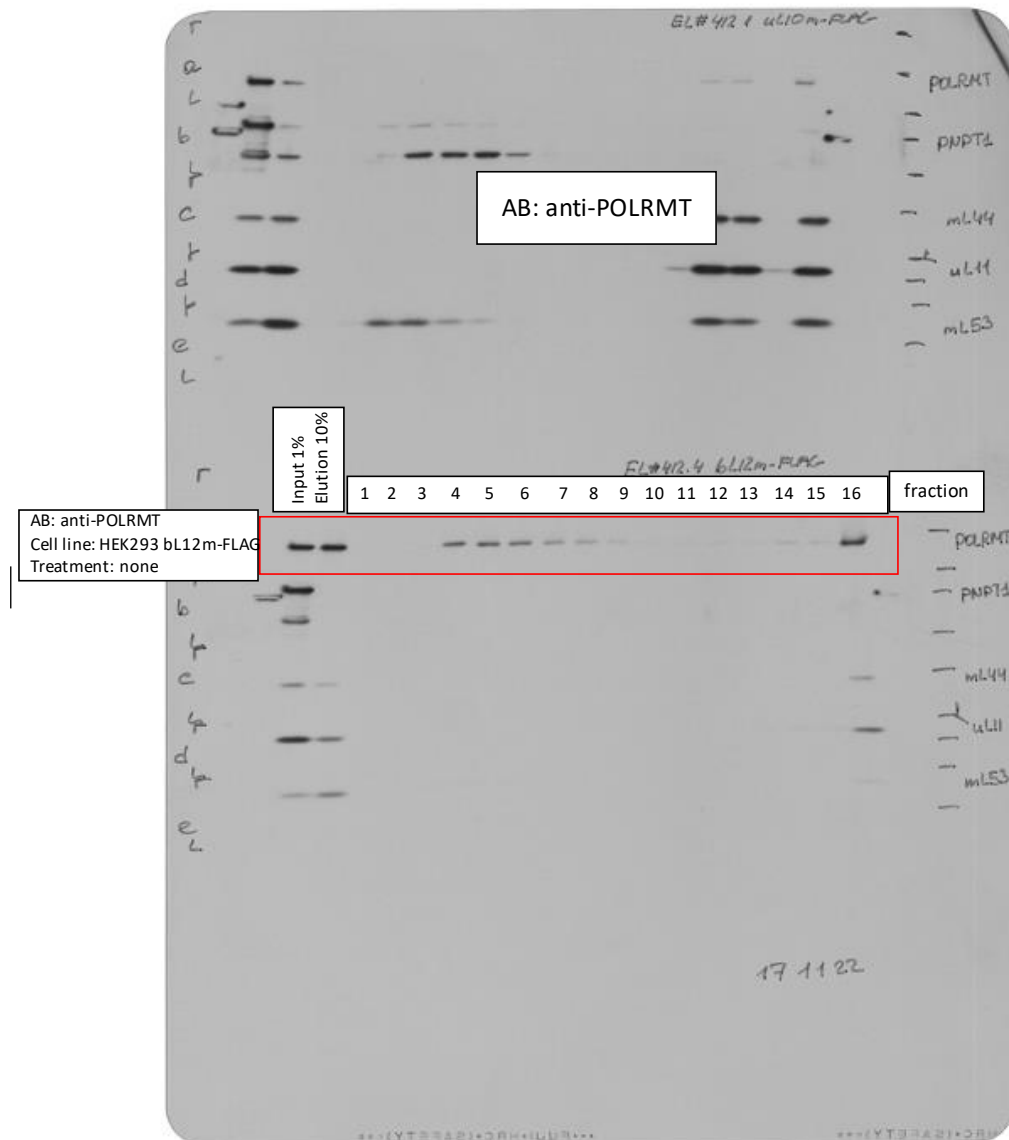
EL#412.4-6 bL12m-FLAG IP + Gradient

Rotor: SW41 Ti

Gradient: Sucrose 5-30%

Speed: 158.000xg

Time: 15h





Source Data 4\_related to Extended Data Fig.8b

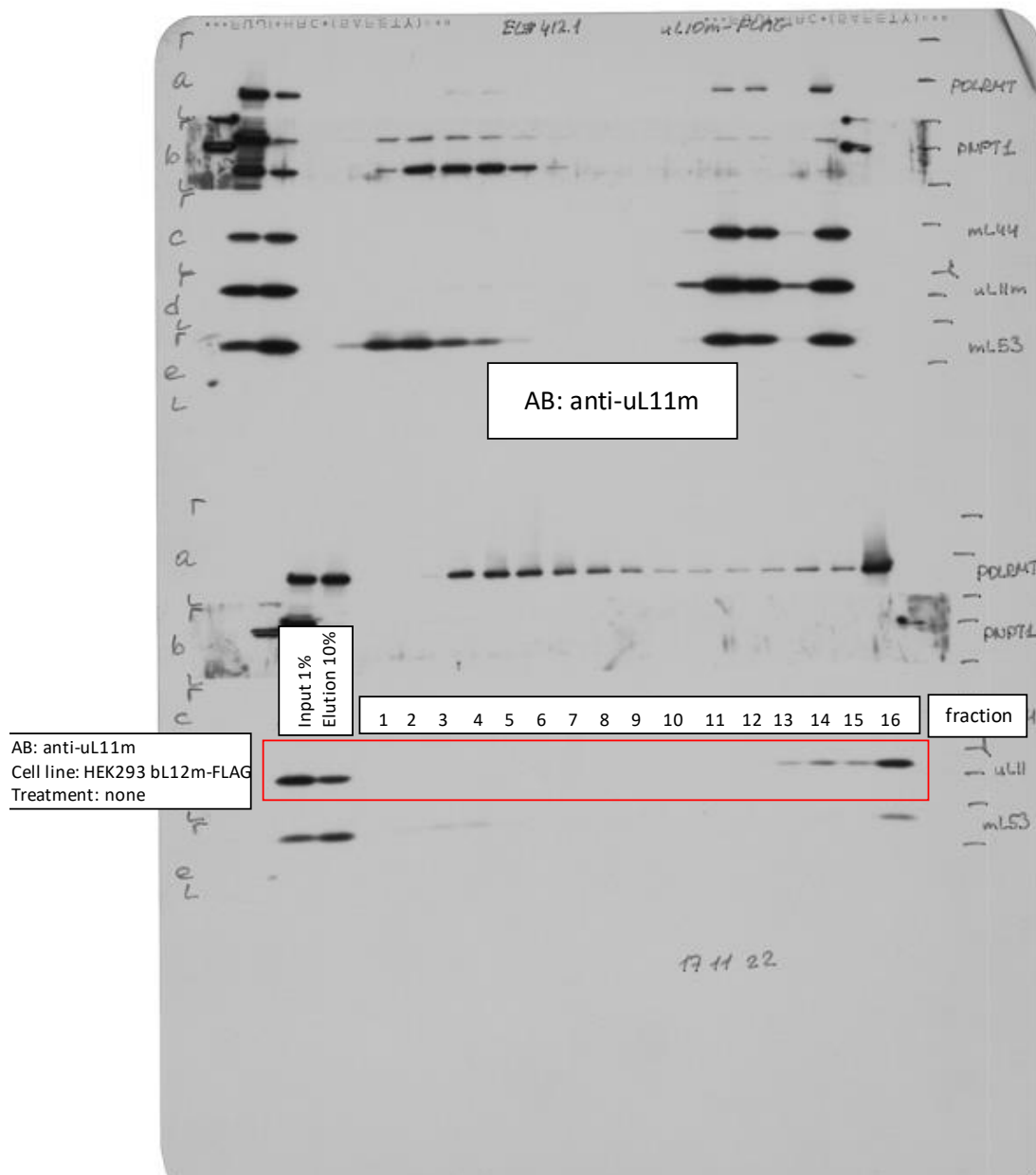
EL#412.4-6 bL12m-FLAG IP + Gradient

Rotor: SW41 Ti

Gradient: Sucrose 5-30%

Speed: 158.000xg

Time: 15h



Source Data 4\_related to Extended Data Fig.8b

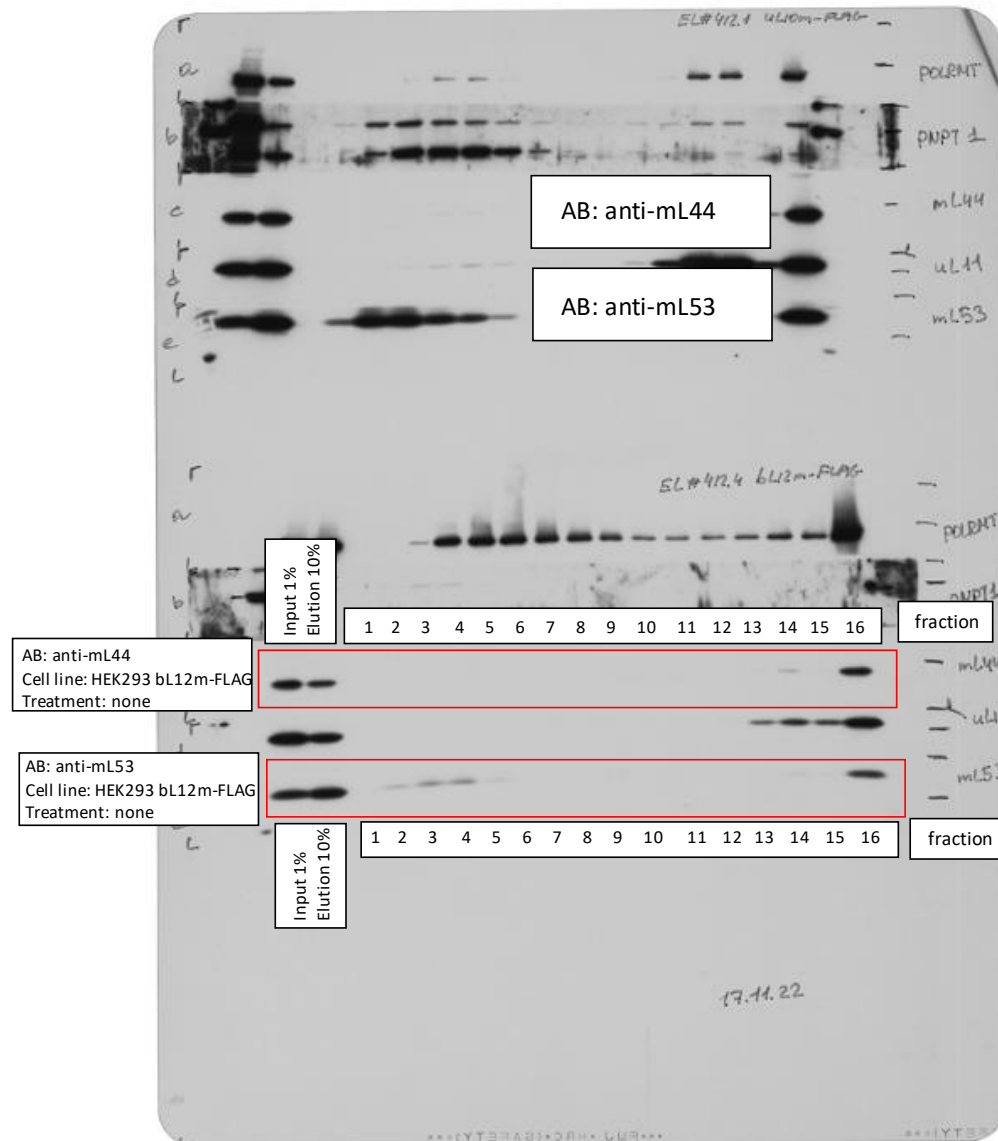
EL#412.4-6 bL12m-FLAG IP + Gradient

Rotor: SW41 Ti

Gradient: Sucrose 5-30%

Speed: 158.000xg

Time: 15h



Source Data 4\_related to Extended Data Fig.8b

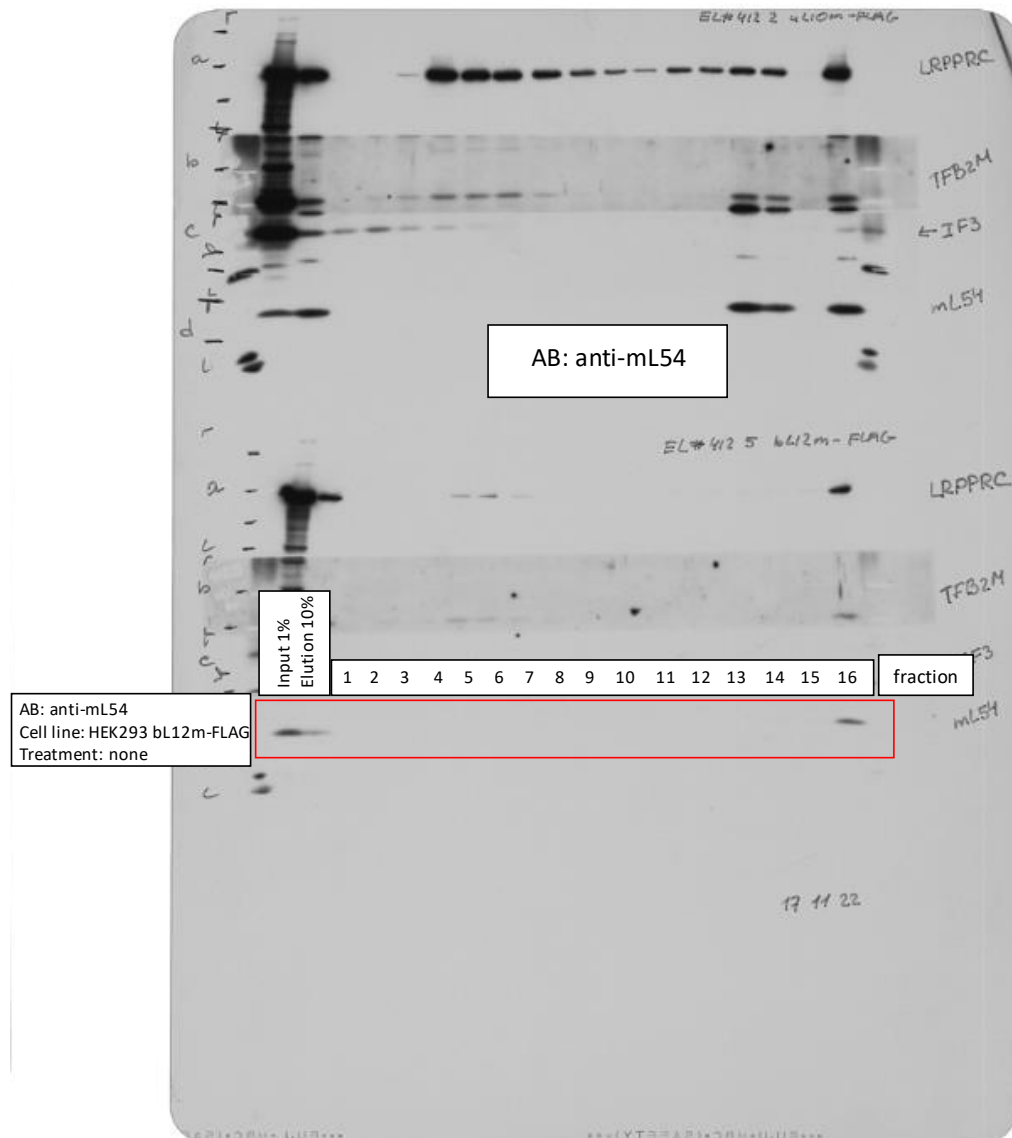
EL#412.4-6 bL12m-FLAG IP + Gradient

Rotor: SW41 Ti

Gradient: Sucrose 5-30%

Speed: 158.000xg

Time: 15h



AB: anti-mL54  
Cell line: HEK293 bL12m-FLAG  
Treatment: none

Source Data 4\_related to Extended Data Fig.8c

EL#412.1-3 uL10m-FLAG IP + Gradient

Rotor: SW41 Ti

Gradient: Sucrose 5-30%

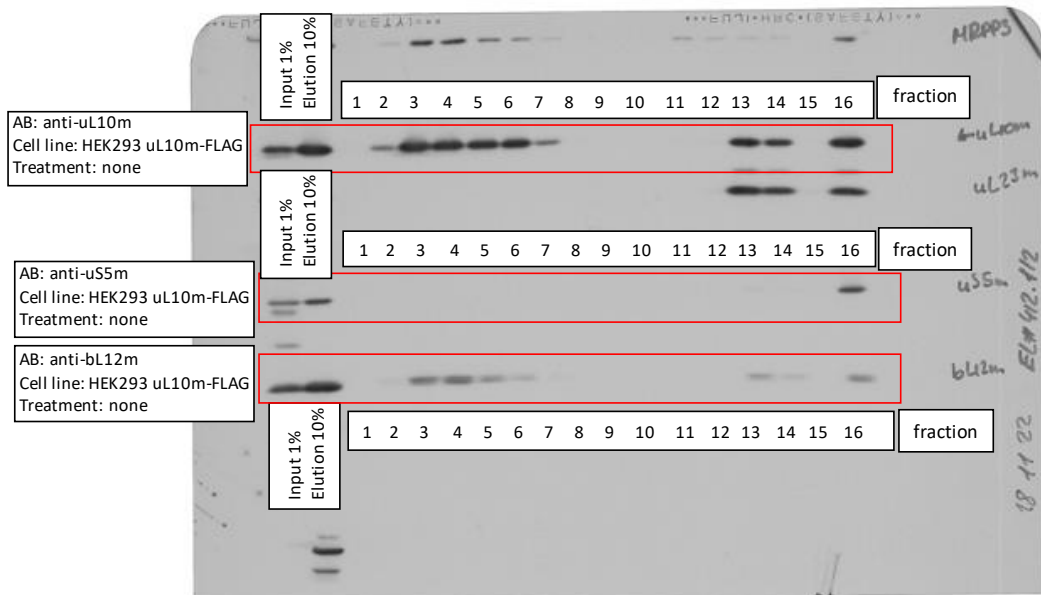
Speed: 158.000xg

Time: 15h

AB: anti-uL10m

AB: anti-uS5m

AB: anti-bL12m



Source Data 4\_related to Extended Data Fig.8c

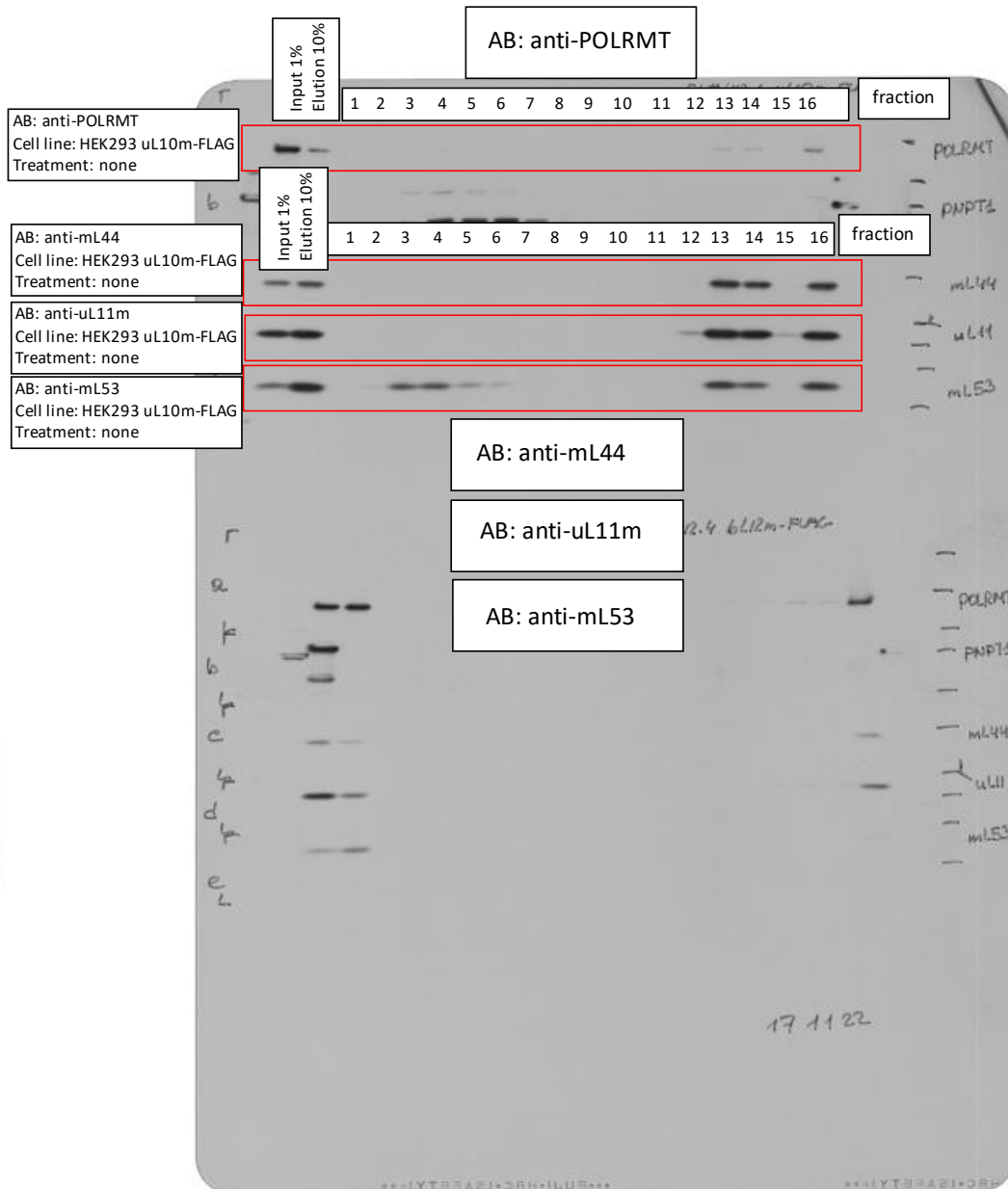
EL#412.1-3 uL10m-FLAG IP + Gradient

Rotor: SW41 Ti

Gradient: Sucrose 5-30%

Speed: 158.000xg

Time: 15h



Source Data 4\_related to Extended Data Fig.8c

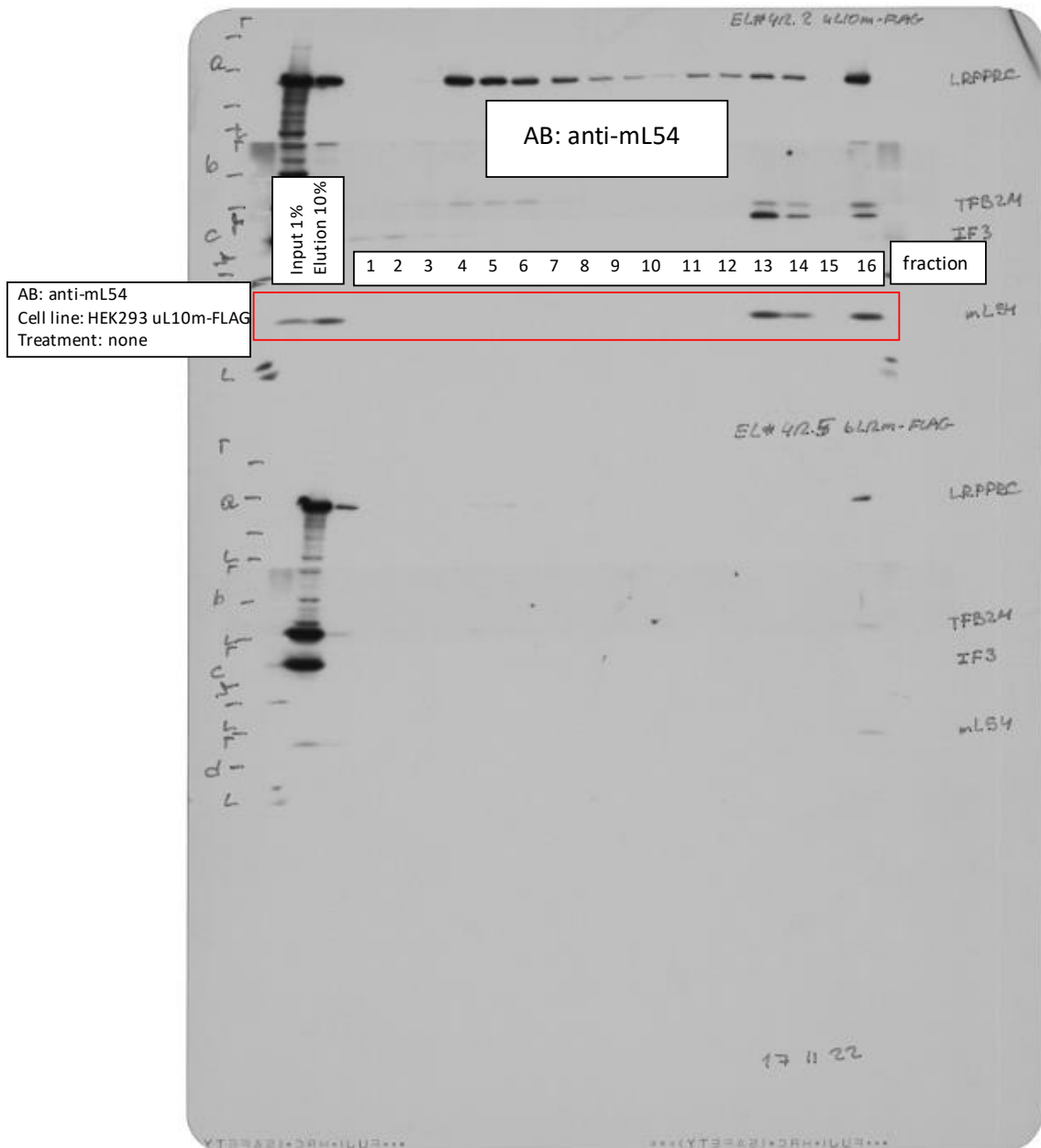
EL#412.1-3 uL10m-FLAG IP + Gradient

Rotor: SW41 Ti

Gradient: Sucrose 5-30%

Speed: 158.000xg

Time: 15h



Source Data 4\_related to Extended Data Fig.8e

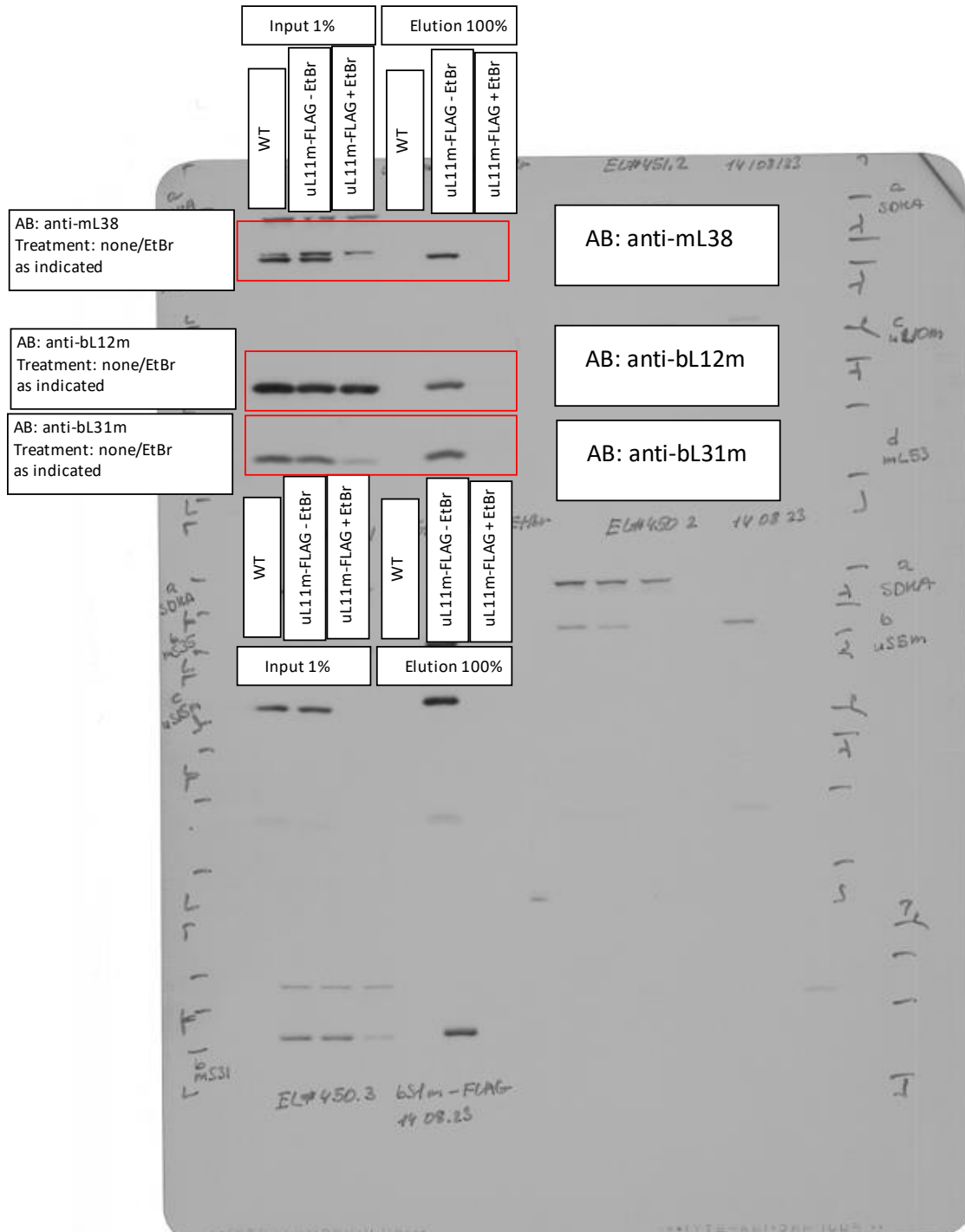
EL#451 uL11m-FLAG IP + EtBr treatment

Rotor: N/A

Gradient: N/A

Speed: N/A

Time: N/A



Source Data 4\_related to Extended Data Fig.8e

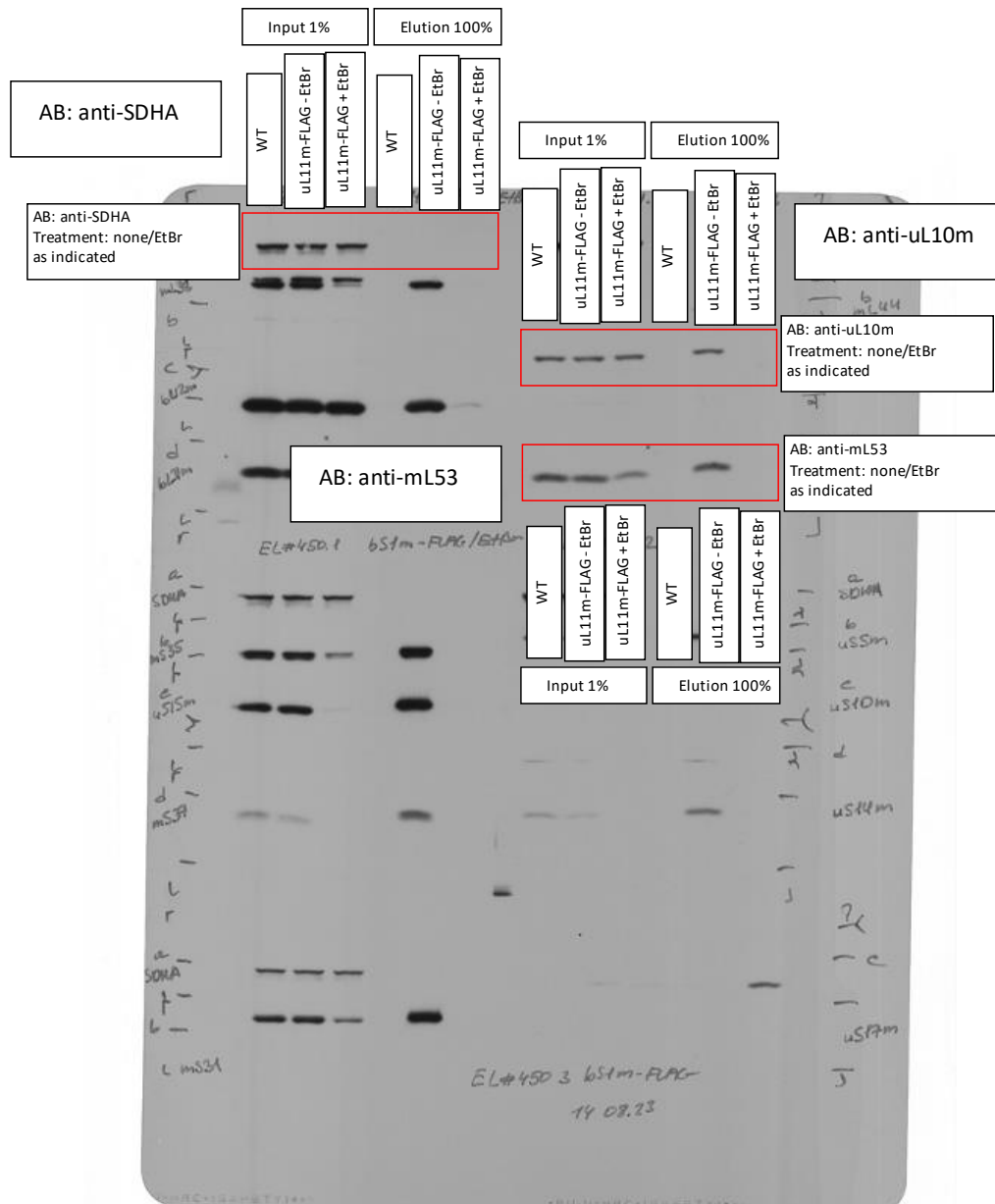
EL#451 uL11m-FLAG IP + EtBr treatment

Rotor: N/A

Gradient: N/A

Speed: N/A

Time: N/A





Source Data 4\_related to Extended Data Fig.8e

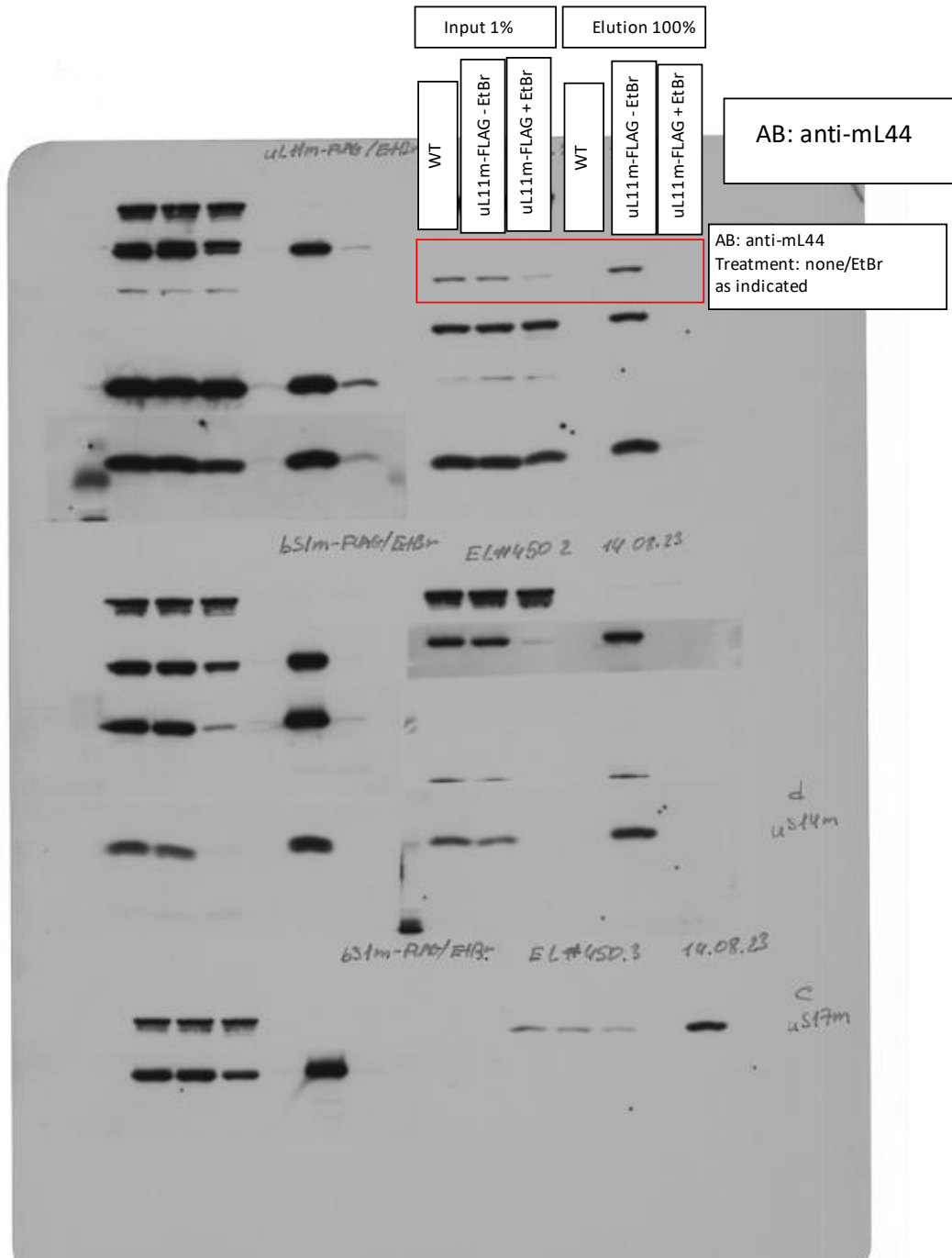
EL#451 uL11m-FLAG IP + EtBr treatment

Rotor: N/A

Gradient: N/A

Speed: N/A

Time: N/A



Source Data 4\_related to Extended Data Fig.8e

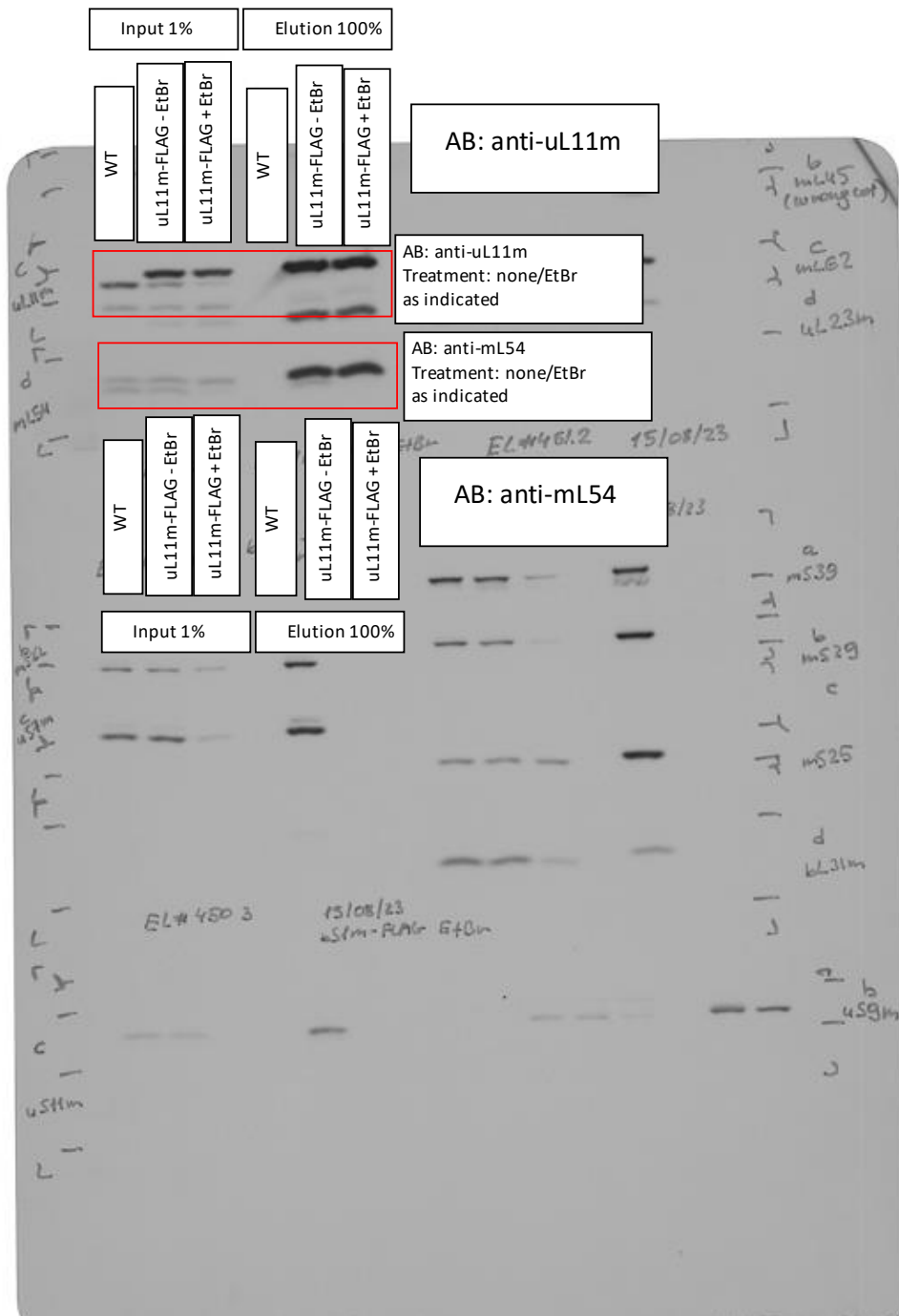
EL#451 uL11m-FLAG IP + EtBr treatment

Rotor: N/A

Gradient: N/A

Speed: N/A

Time: N/A



Source Data 4\_related to Extended Data Fig.8e

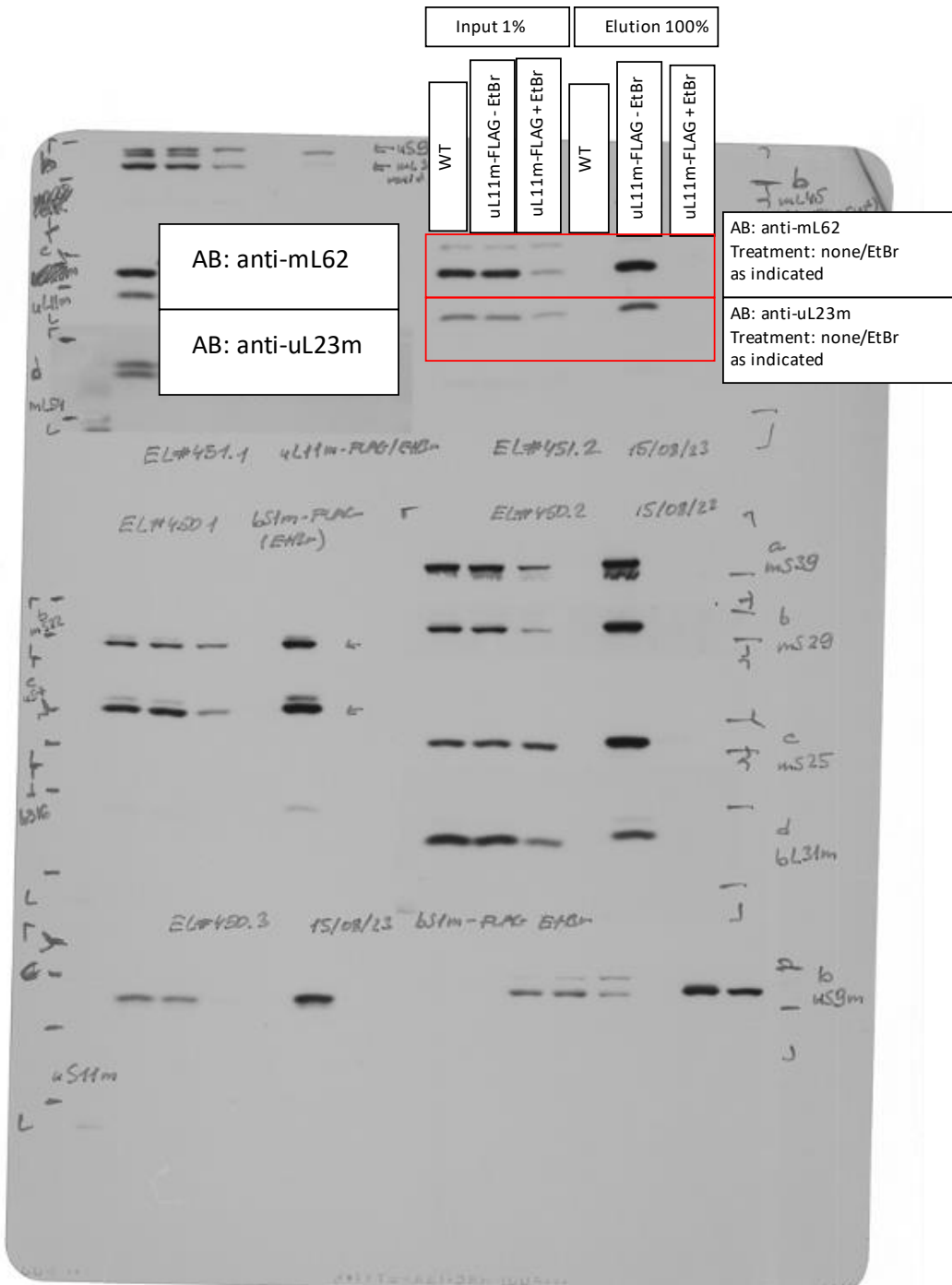
EL#451 uL11m-FLAG IP + EtBr treatment

Rotor: N/A

Gradient: N/A

Speed: N/A

Time: N/A



### Source Data 4\_related to Extended Data Fig.8e

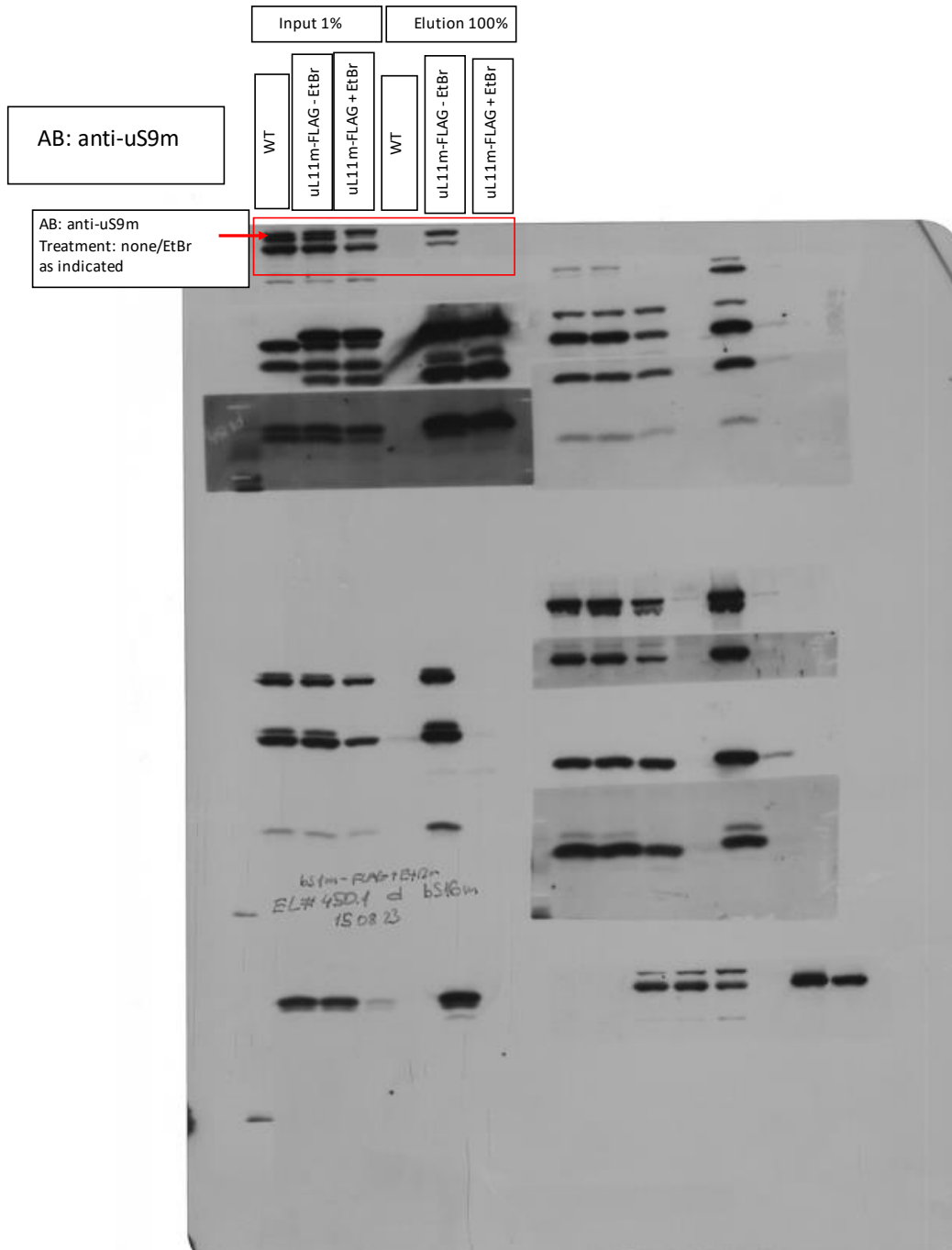
EL#451 uL11m-FLAG IP + EtBr treatment

Rotor: N/A

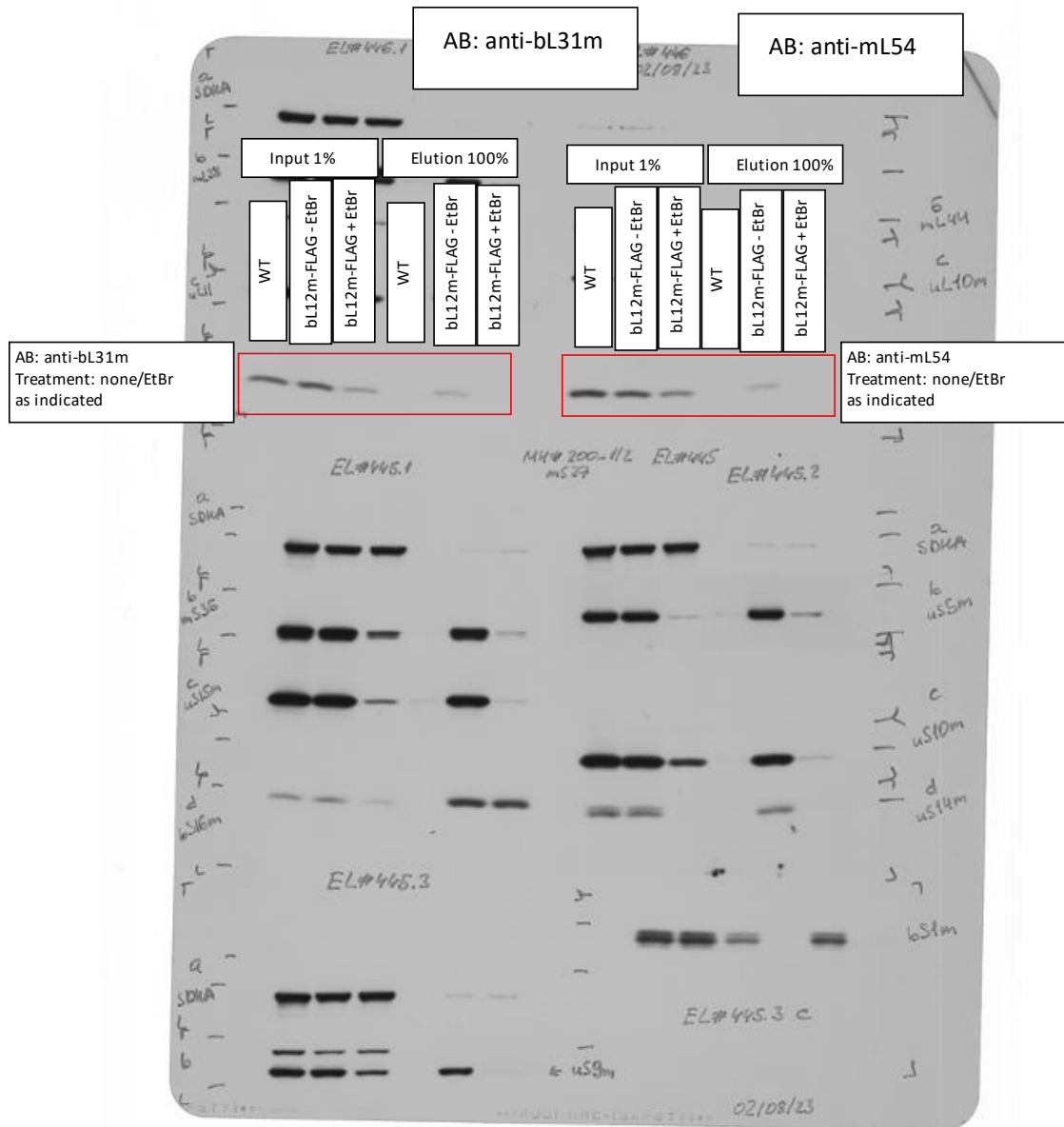
Gradient: N/A

Speed: N/A

Time: N/A

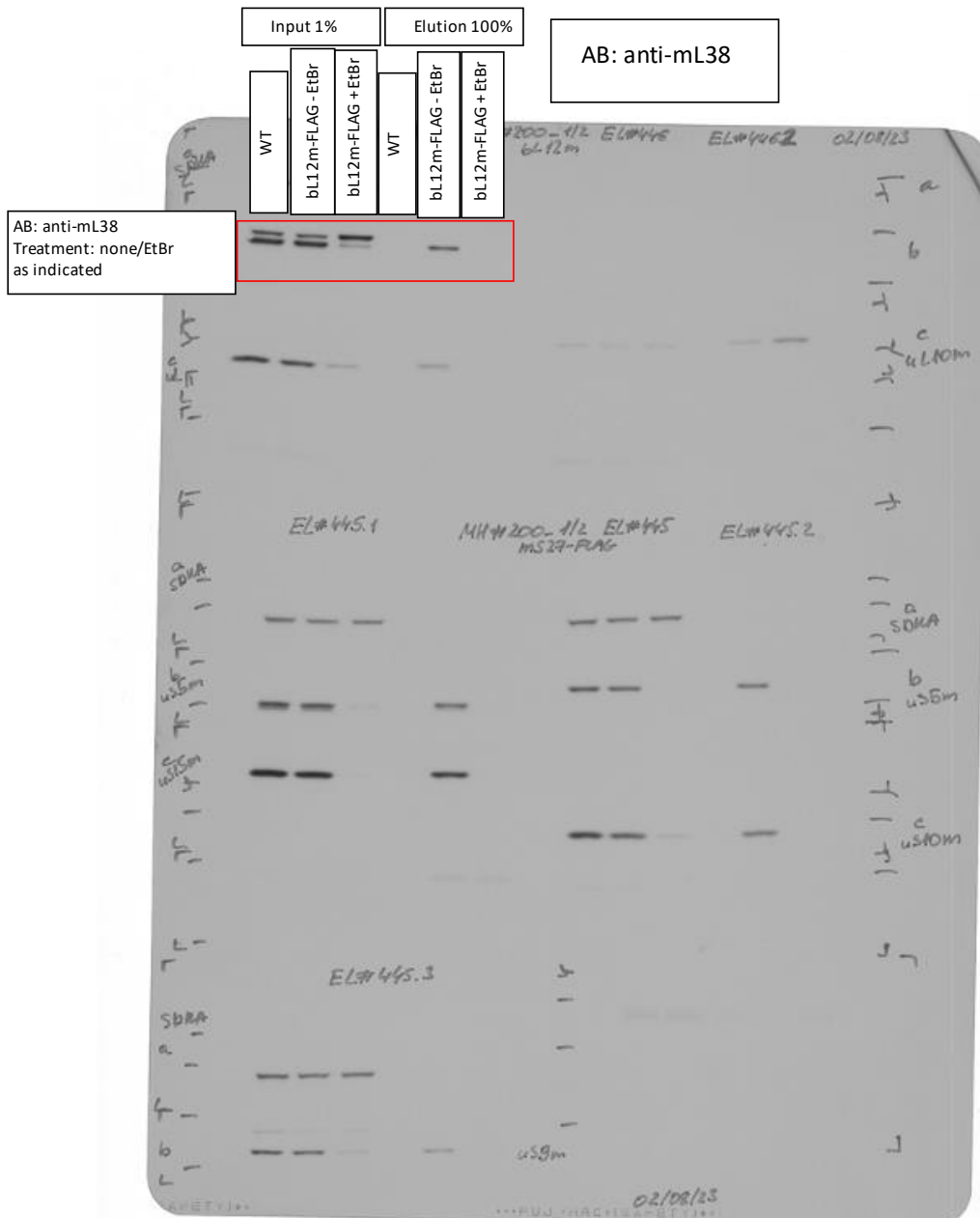


Source Data 4\_related to Extended Data Fig.8d  
 EL#446/MH#200 bL12m-FLAG IP + EtBr treatment  
 Rotor: N/A  
 Gradient: N/A  
 Speed: N/A  
 Time: N/A



Source Data 4\_related to Extended Data Fig.8d  
 EL#446/MH#200 bL12m-FLAG IP + EtBr treatment

Rotor: N/A  
 Gradient: N/A  
 Speed: N/A  
 Time: N/A



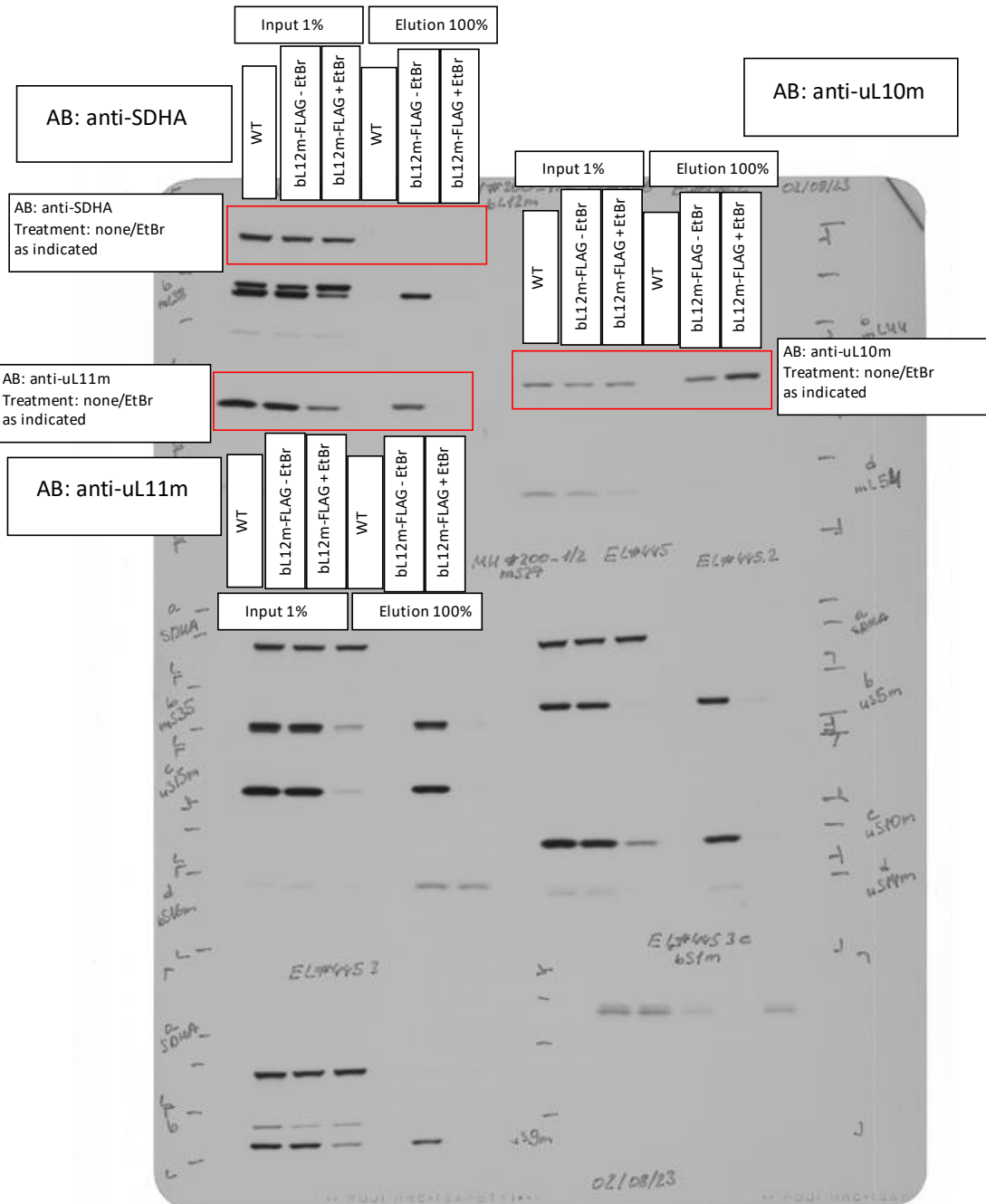
Source Data 4\_related to Extended Data Fig.8d  
 EL#446/MH#200 bL12m-FLAG IP + EtBr treatment

Rotor: N/A

Gradient: N/A

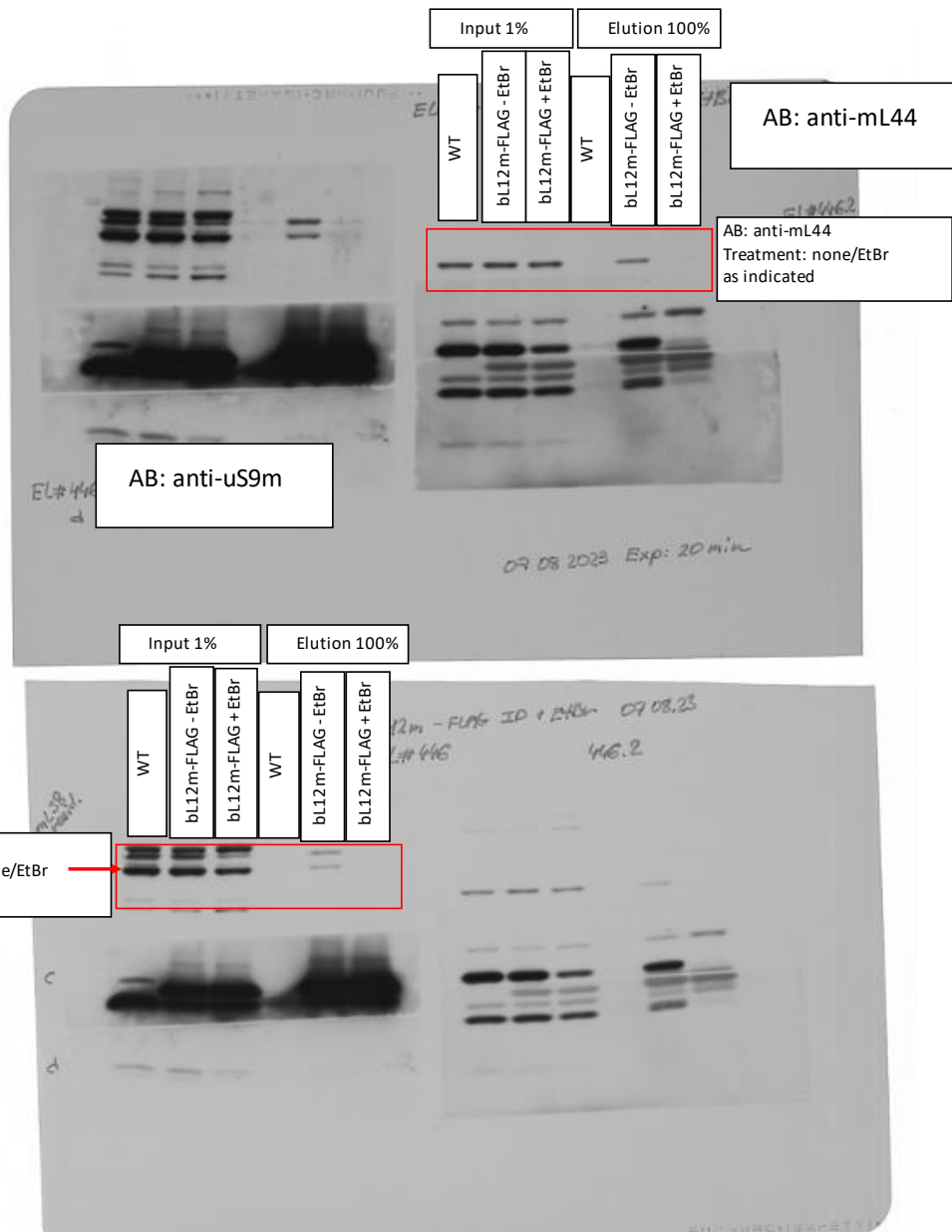
Speed: N/A

Time: N/A



Source Data 4\_related to Extended Data Fig.8d  
EL#446/MH#200 bL12m-FLAG IP + EtBr treatment

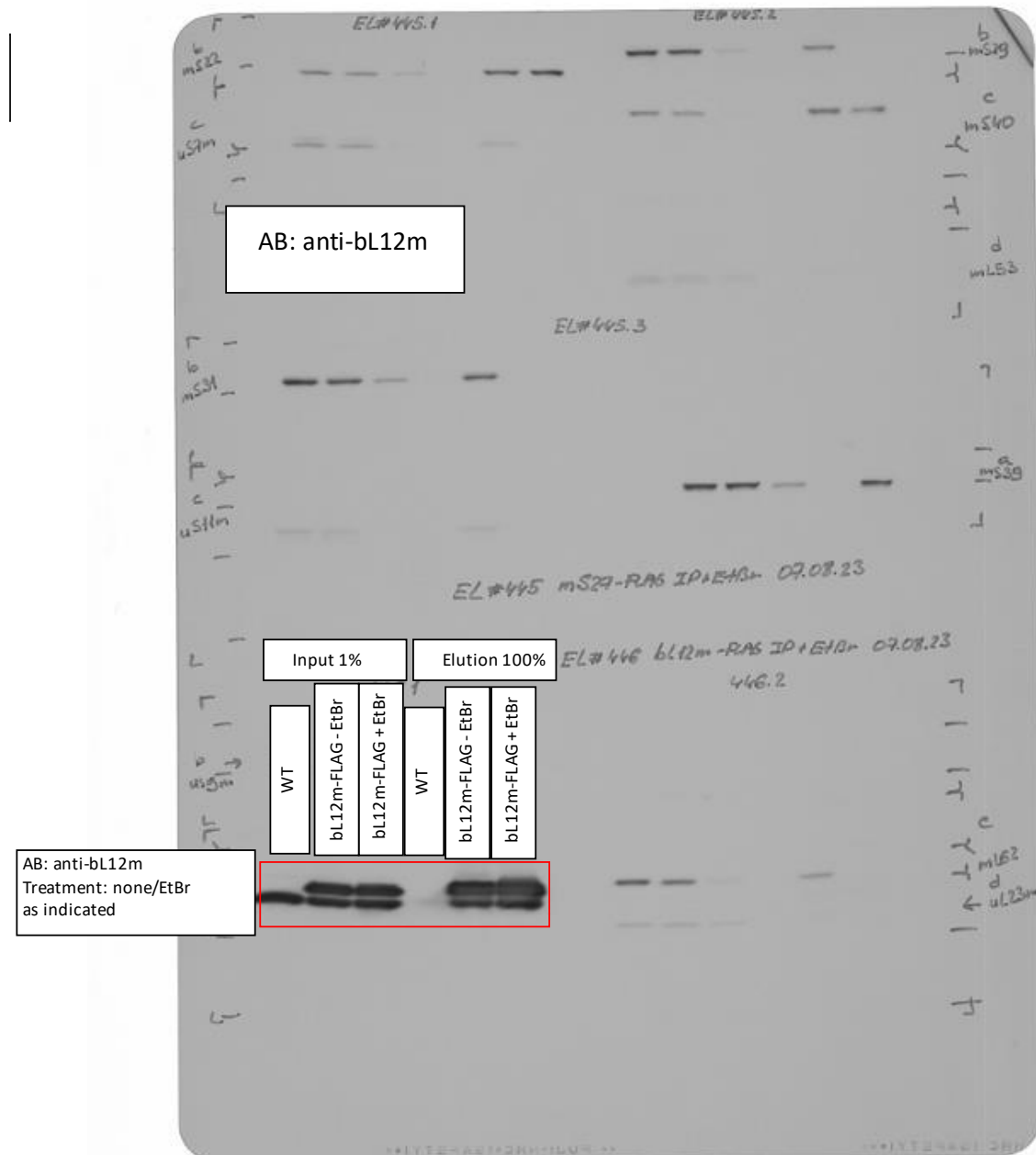
Rotor: N/A  
Gradient: N/A  
Speed: N/A  
Time: N/A





Source Data 4\_related to Extended Data Fig.8d  
 EL#446/MH#200 bL12m-FLAG IP + EtBr treatment

Rotor: N/A  
 Gradient: N/A  
 Speed: N/A  
 Time: N/A



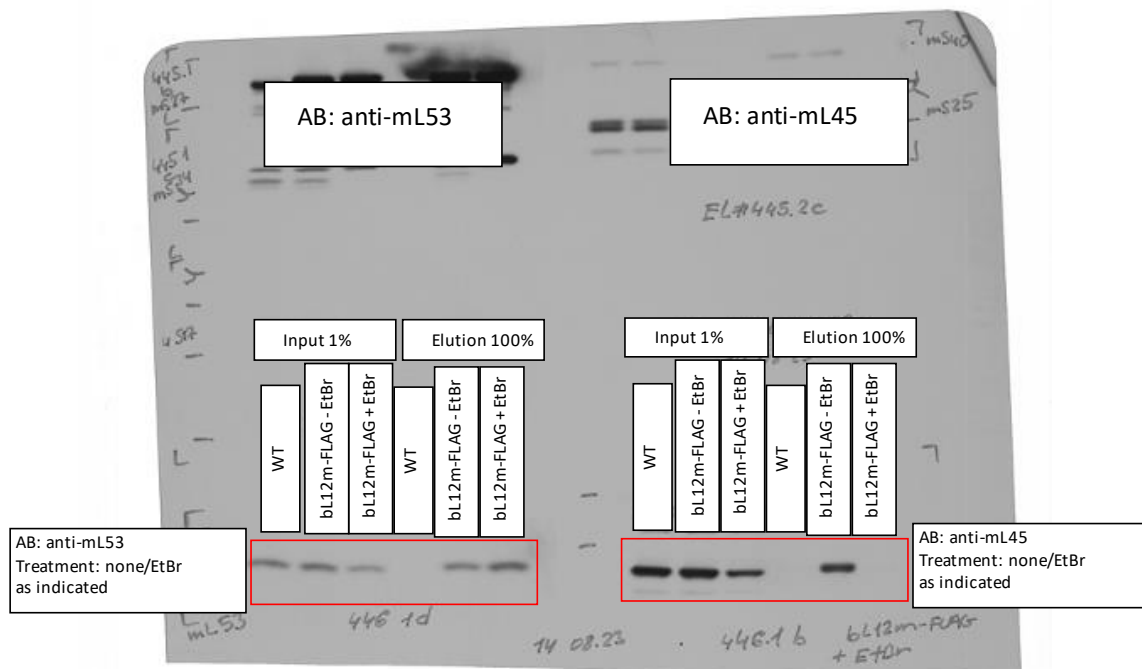
Source Data 4\_related to Extended Data Fig.8d  
EL#446/MH#200 bL12m-FLAG IP + EtBr treatment

Rotor: N/A

Gradient: N/A

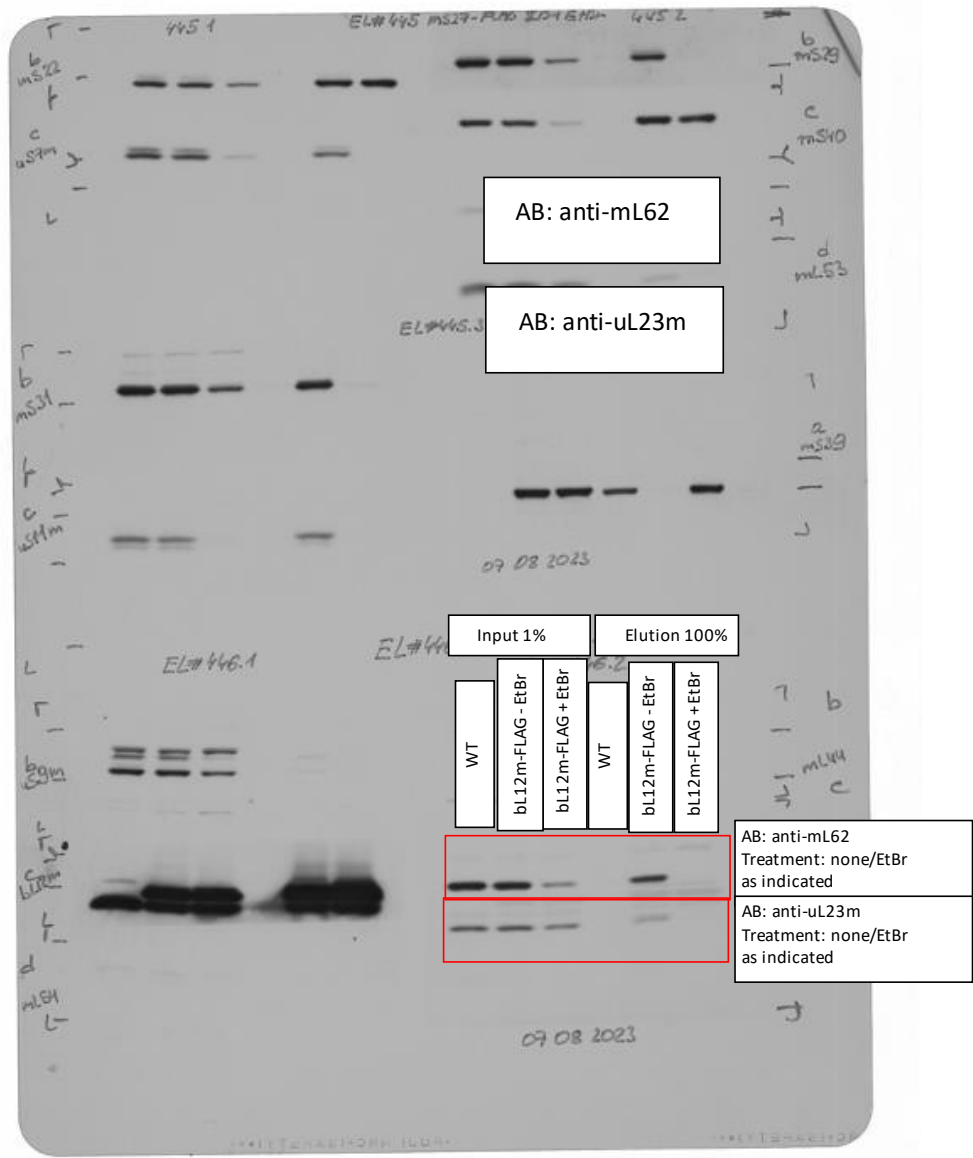
Speed: N/A

Time: N/A



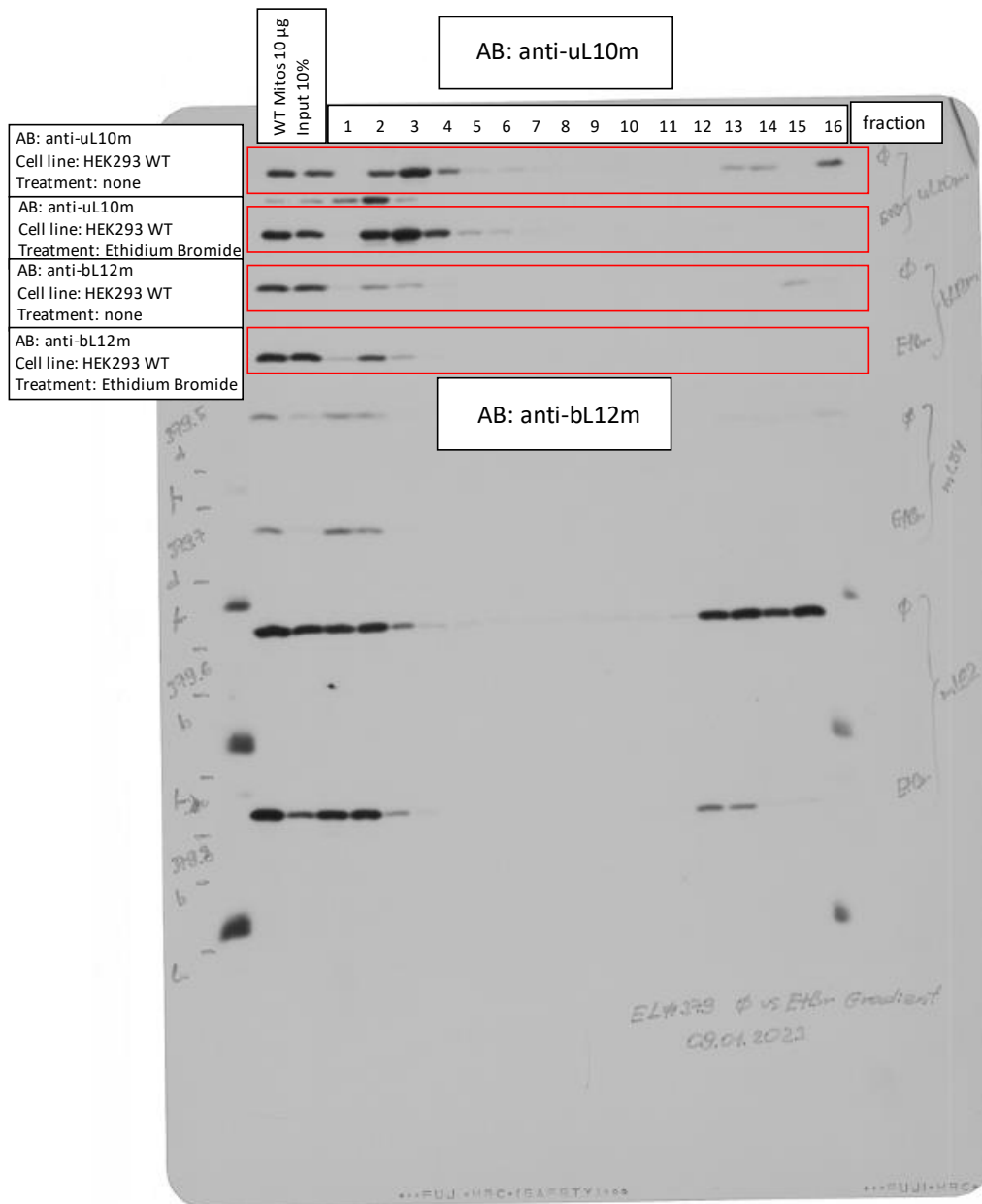
Source Data 4\_related to Extended Data Fig.8d  
 EL#446/MH#200 bL12m-FLAG IP + EtBr treatment

Rotor: N/A  
 Gradient: N/A  
 Speed: N/A  
 Time: N/A



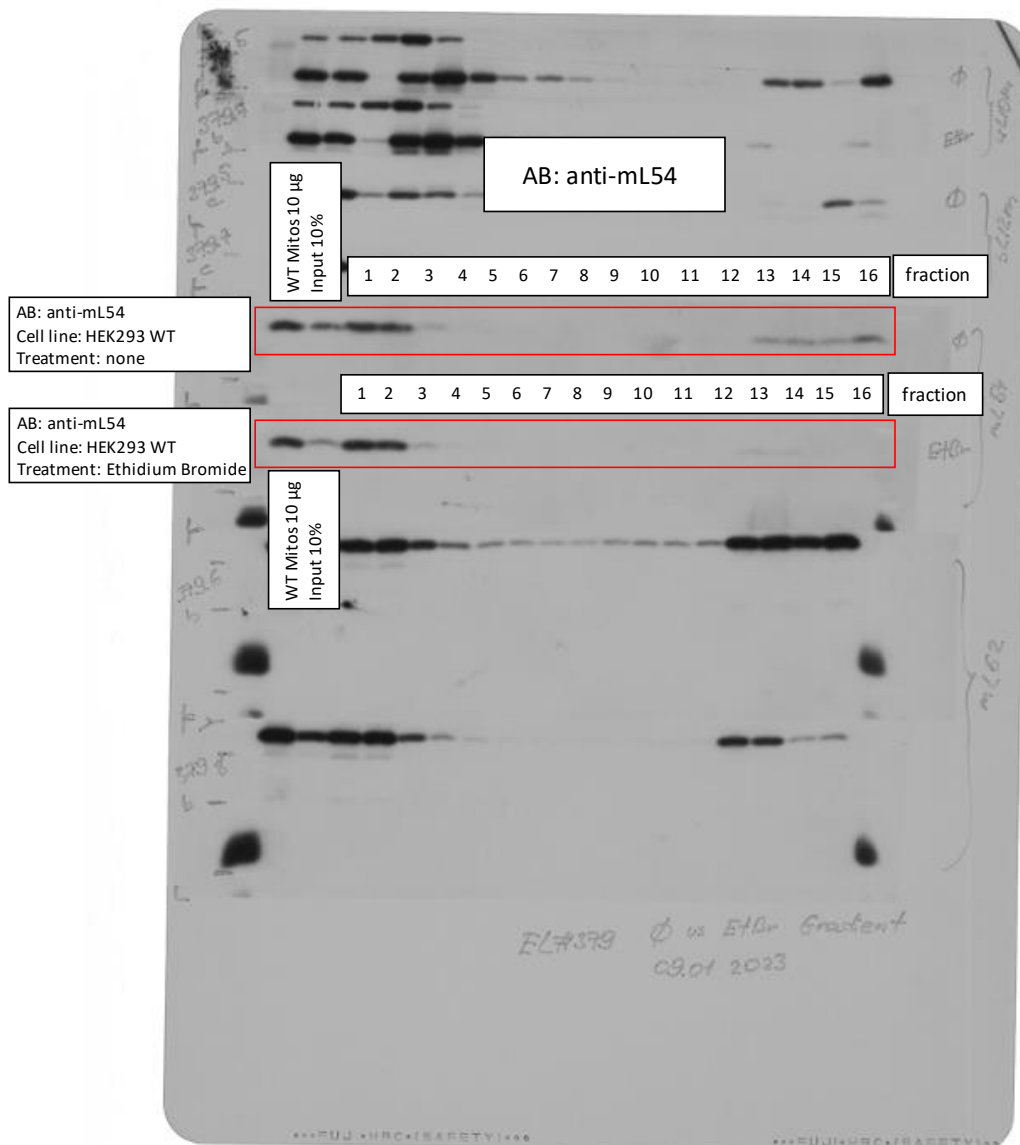
Source Data 4\_related to Extended Data Fig.8f  
 EL#363 HEK293 WT + Ethidium Bromide treatment + Gradient  
 EL#379 HEK293 WT + Ethidium Bromide treatment + Gradient

Rotor: SW41 Ti  
 Gradient: Sucrose 5-30%  
 Speed: 158.000xg  
 Time: 15h



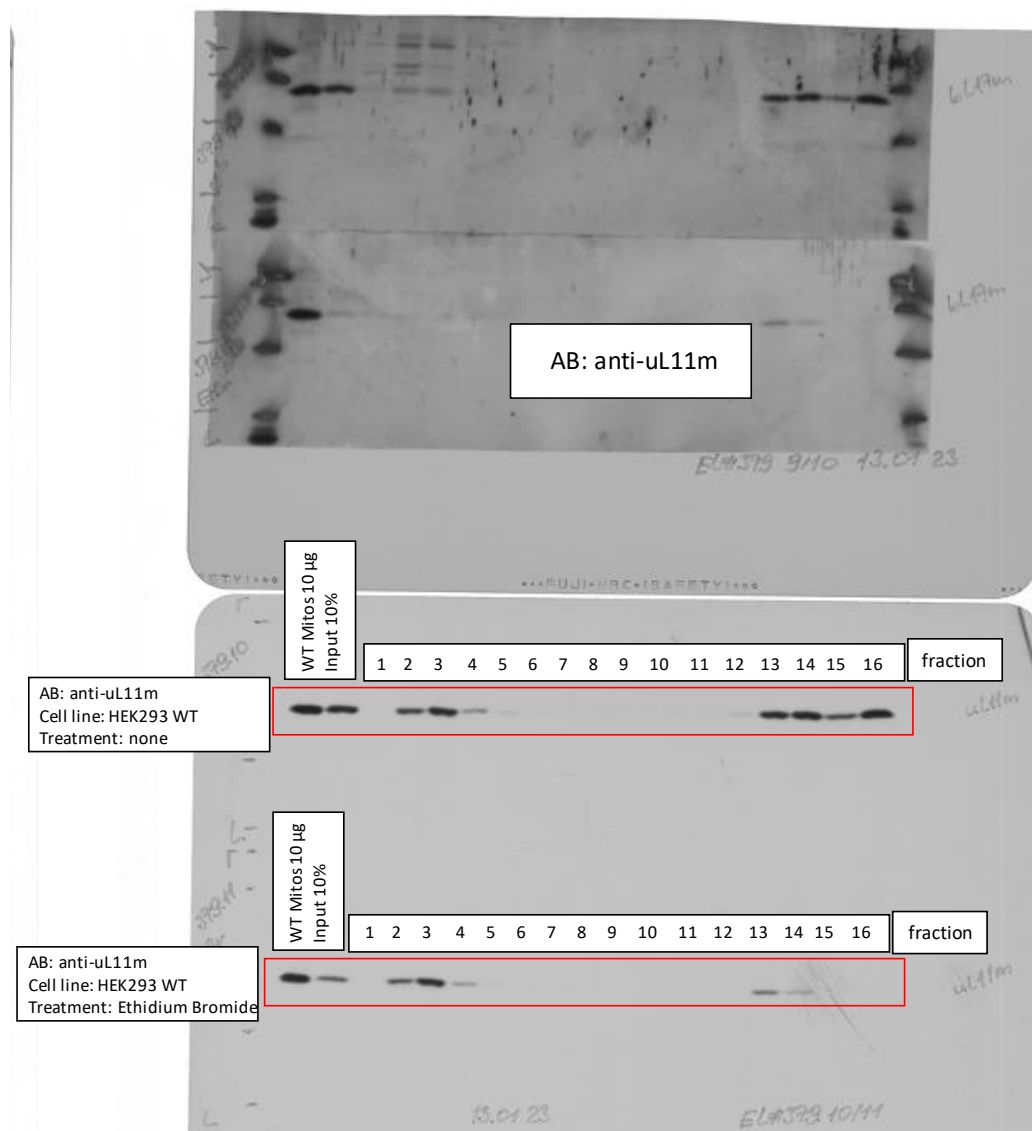
Source Data 4\_related to Extended Data Fig.8f  
 EL#363 HEK293 WT + Ethidium Bromide treatment + Gradient  
 EL#379 HEK293 WT + Ethidium Bromide treatment + Gradient

Rotor: SW41 Ti  
 Gradient: Sucrose 5-30%  
 Speed: 158.000xg  
 Time: 15h



Source Data 4\_related to Extended Data Fig.8f  
 EL#363 HEK293 WT + Ethidium Bromide treatment + Gradient  
 EL#379 HEK293 WT + Ethidium Bromide treatment + Gradient

Rotor: SW41 Ti  
 Gradient: Sucrose 5-30%  
 Speed: 158.000xg  
 Time: 15h



Source Data 4\_related to Extended Data Fig.8f  
EL#363 HEK293 WT + Ethidium Bromide treatment + Gradient  
EL#379 HEK293 WT + Ethidium Bromide treatment + Gradient

Rotor: SW41 Ti  
Gradient: Sucrose 5-30%  
Speed: 158.000xg  
Time: 15h

