

Source Data 5_related to Extended Data Fig.9a

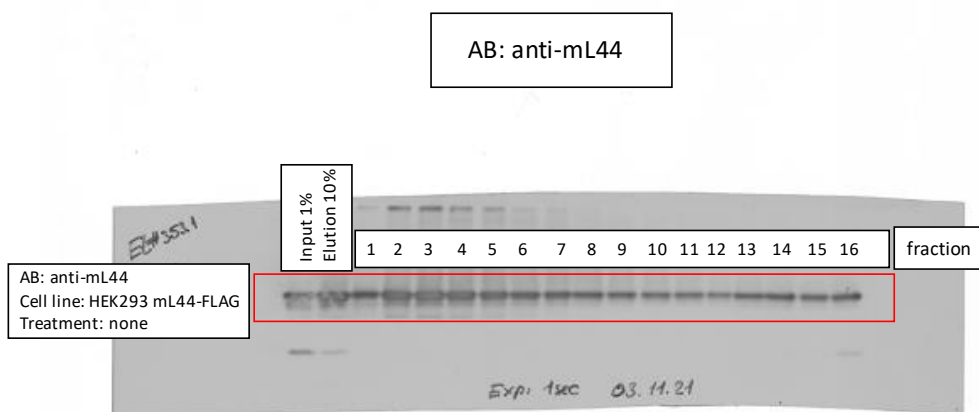
EL#353 mL44-FLAG IP + Gradient

Rotor: SW41 Ti

Gradient: Sucrose 5-30%

Speed: 158.000xg

Time: 15h



Source Data 5_related to Extended Data Fig.9a

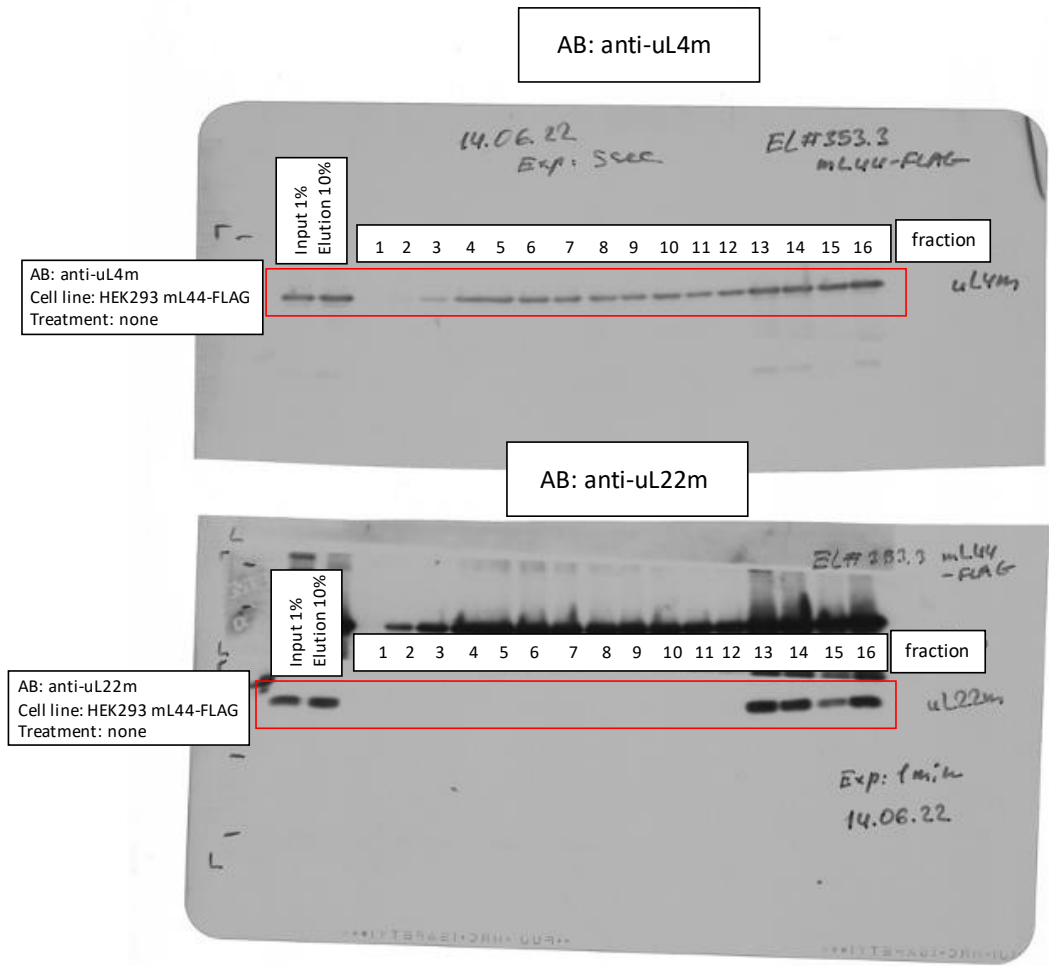
EL#353 mL44-FLAG IP + Gradient

Rotor: SW41 Ti

Gradient: Sucrose 5-30%

Speed: 158.000xg

Time: 15h



Source Data 5_related to Extended Data Fig.9a

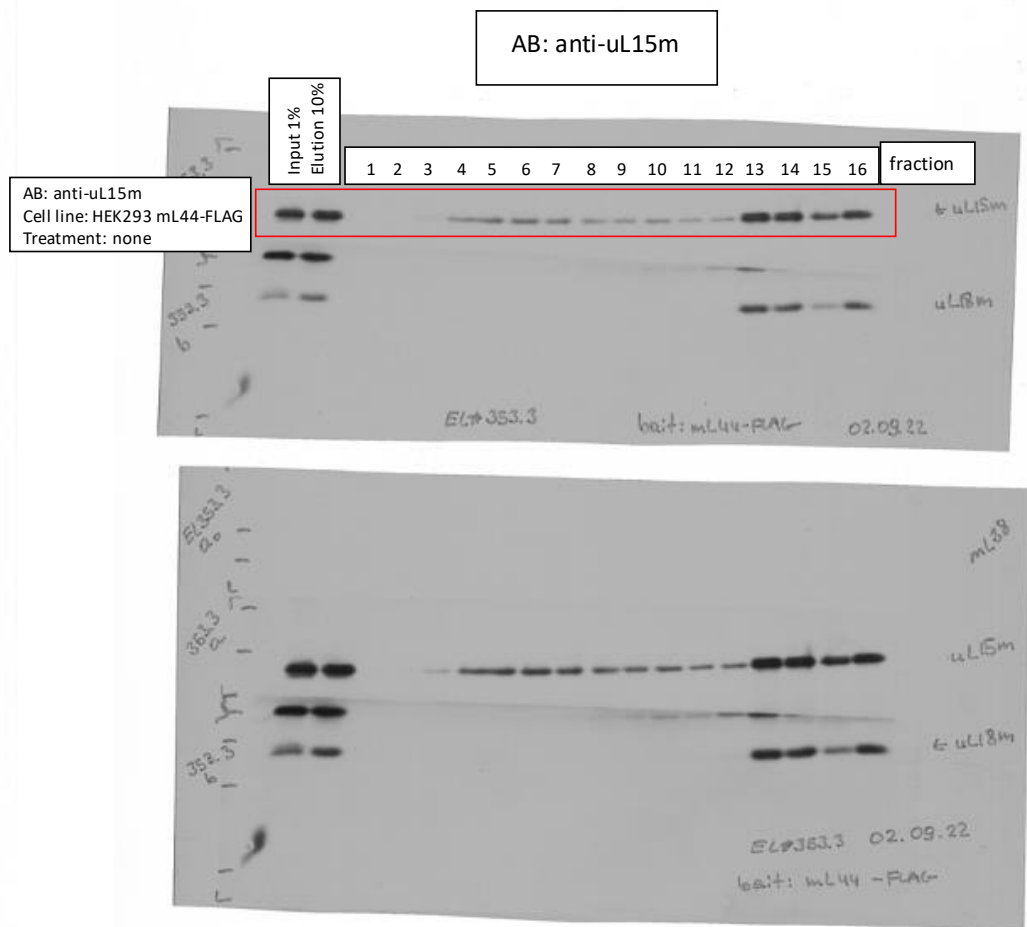
EL#353 mL44-FLAG IP + Gradient

Rotor: SW41 Ti

Gradient: Sucrose 5-30%

Speed: 158.000xg

Time: 15h



Source Data 5_related to Extended Data Fig.9a

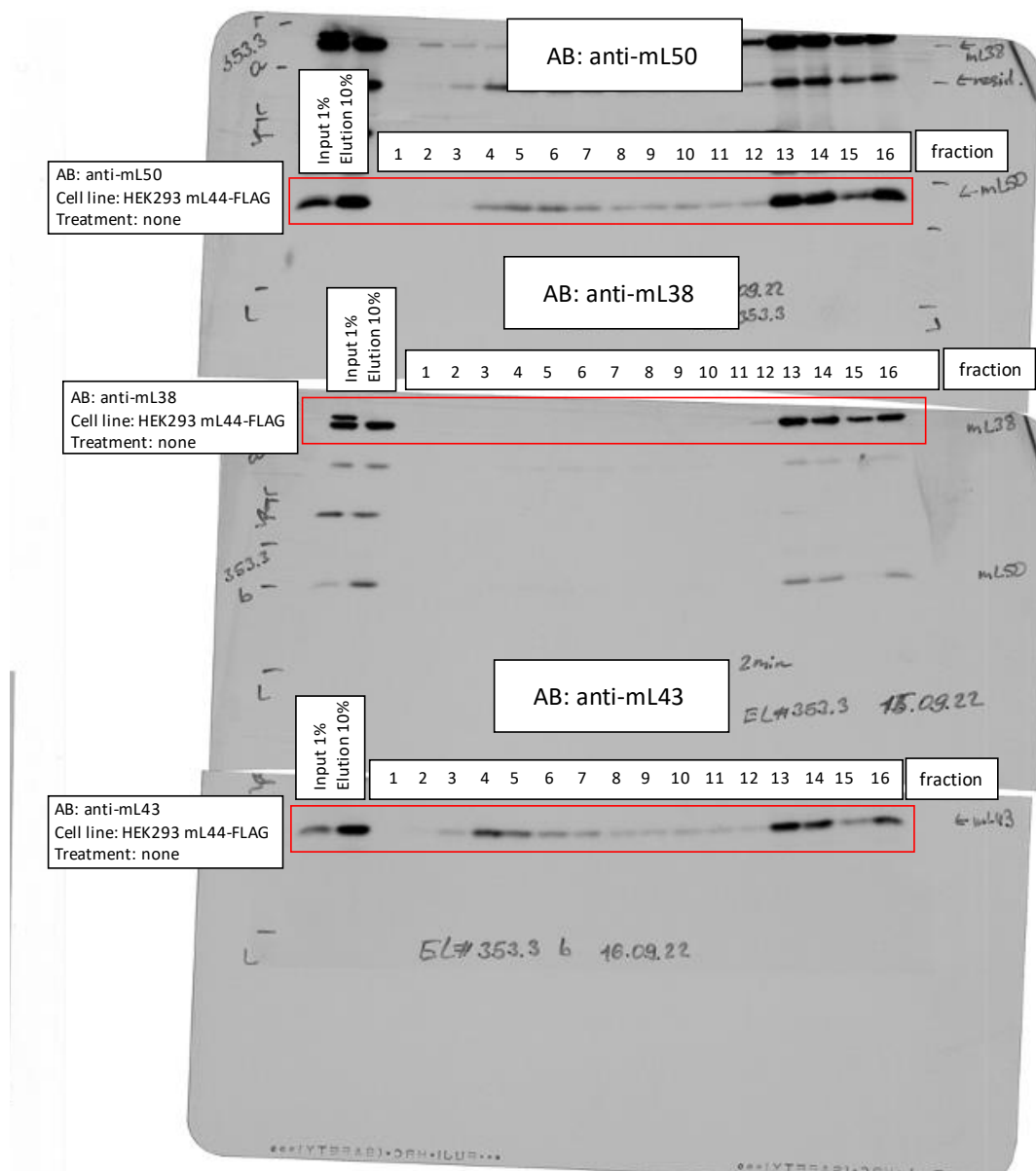
EL#353 mL44-FLAG IP + Gradient

Rotor: SW41 Ti

Gradient: Sucrose 5-30%

Speed: 158.000xg

Time: 15h



Source Data 5_related to Extended Data Fig.9a

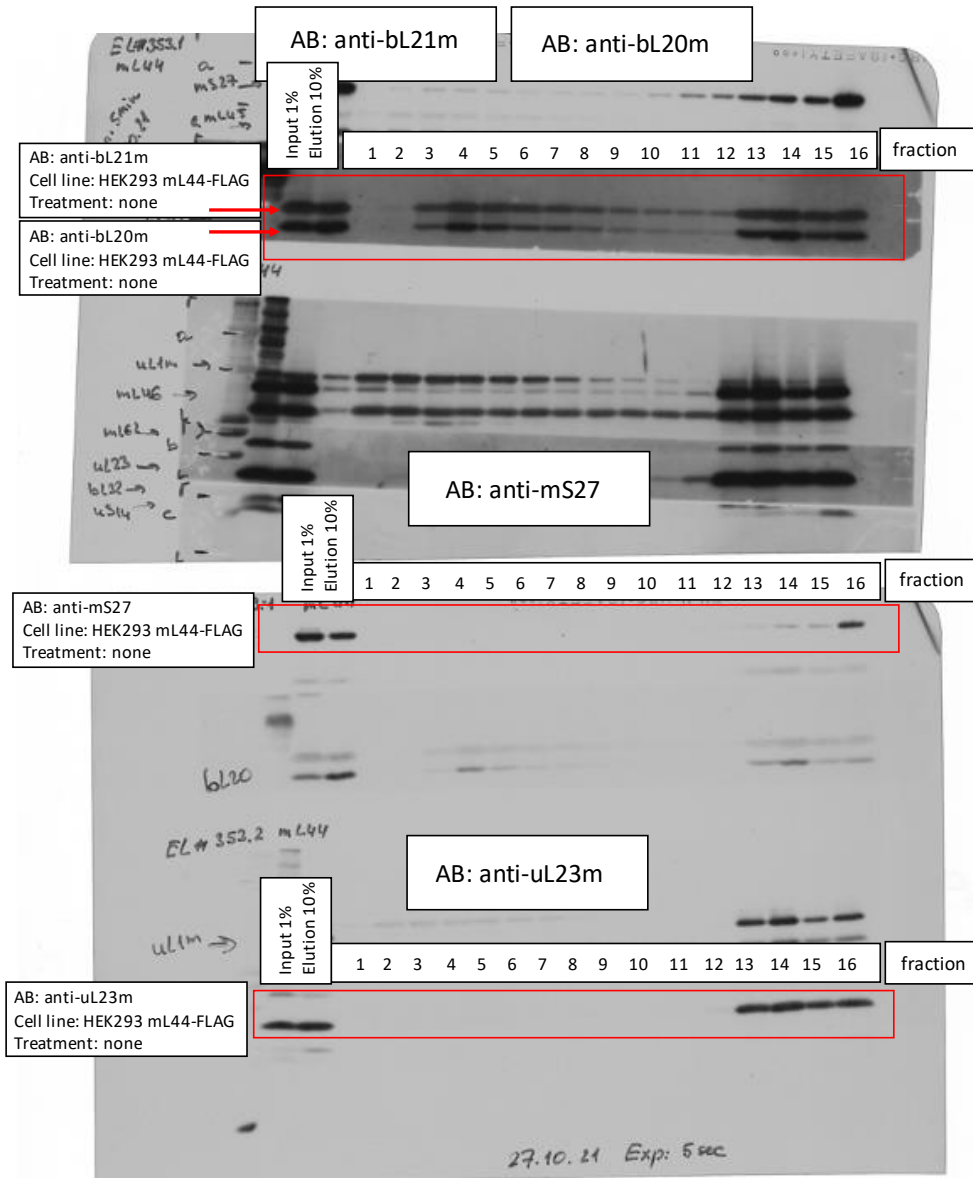
EL#353 mL44-FLAG IP + Gradient

Rotor: SW41 Ti

Gradient: Sucrose 5-30%

Speed: 158.000xg

Time: 15h



Source Data 5_related to Extended Data Fig.9a

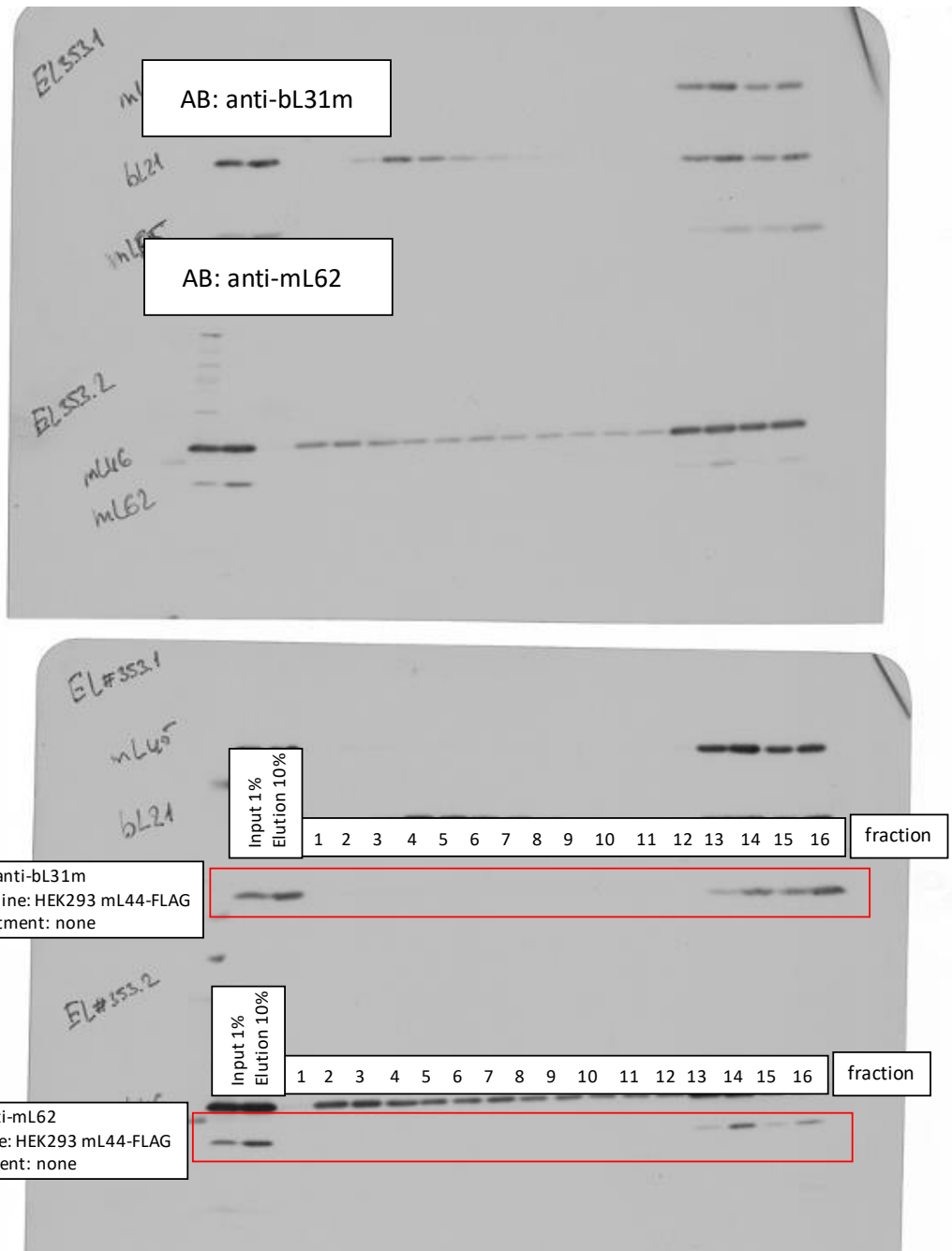
EL#353 mL44-FLAG IP + Gradient

Rotor: SW41 Ti

Gradient: Sucrose 5-30%

Speed: 158.000xg

Time: 15h



Source Data 5_related to Extended Data Fig.9b

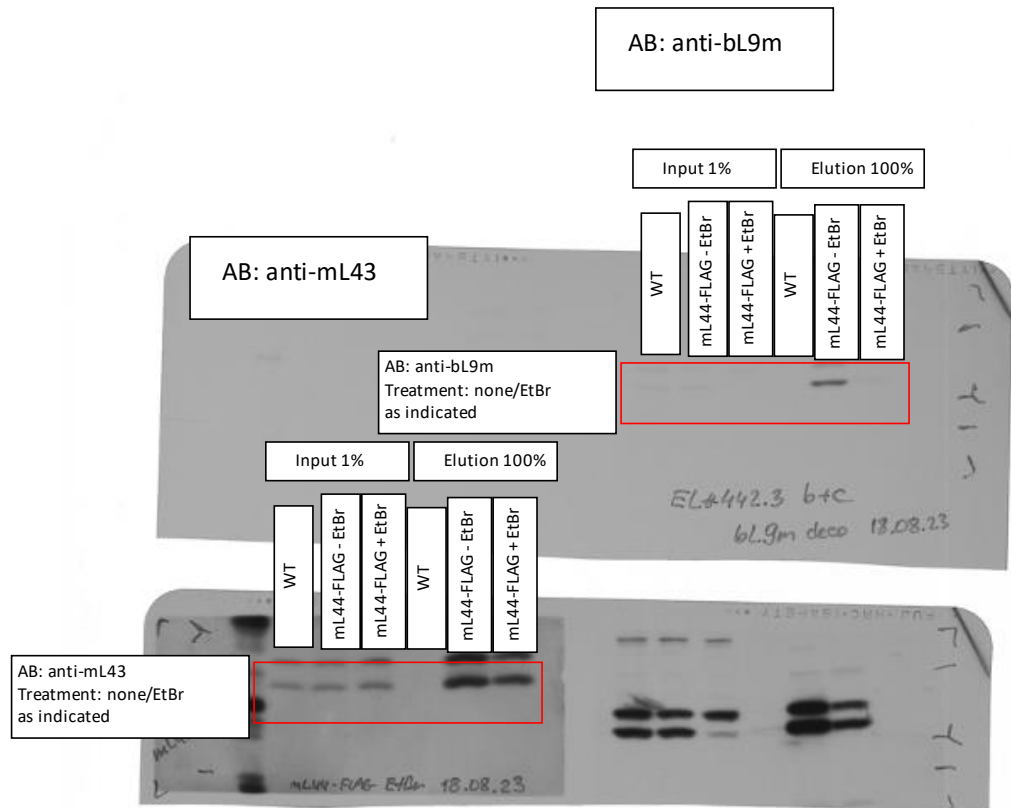
EL#353 mL44-FLAG IP + Gradient

Rotor: SW41 Ti

Gradient: Sucrose 5-30%

Speed: 158.000xg

Time: 15h



Source Data 5_related to Extended Data Fig.9b

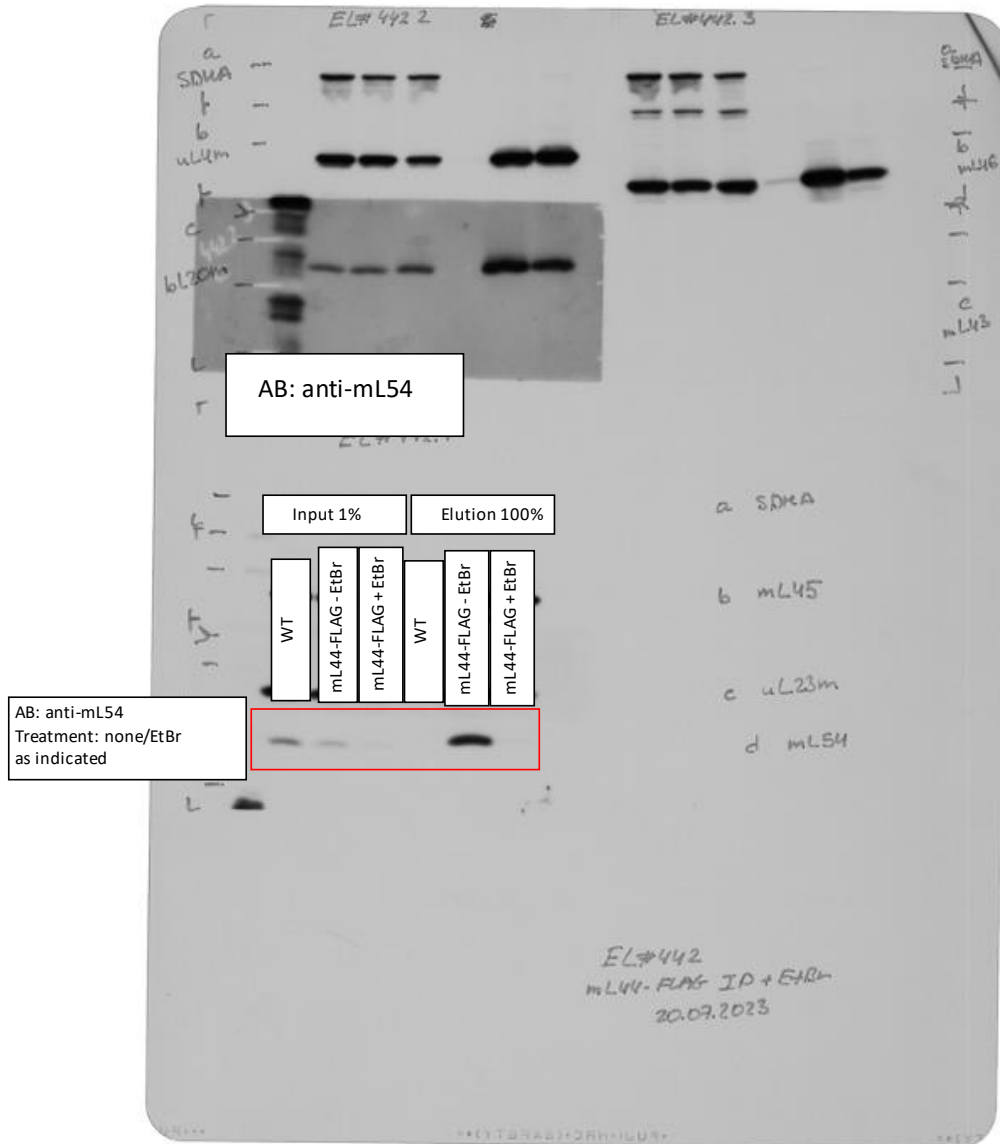
EL#353 mL44-FLAG IP + Gradient

Rotor: SW41 Ti

Gradient: Sucrose 5-30%

Speed: 158.000xg

Time: 15h



Source Data 5_related to Extended Data Fig.9b

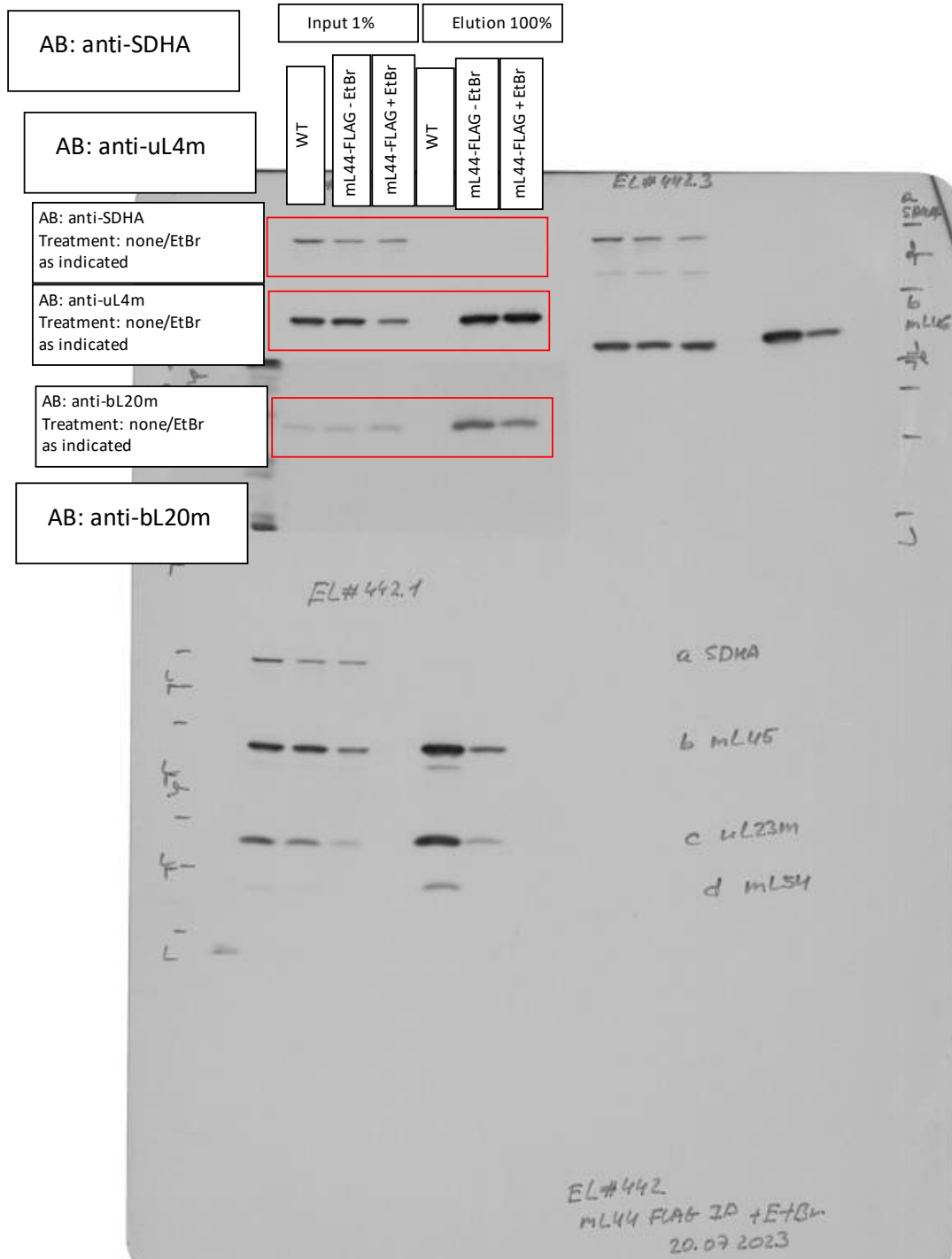
EL#353 mL44-FLAG IP + Gradient

Rotor: SW41 Ti

Gradient: Sucrose 5-30%

Speed: 158.000xg

Time: 15h



Source Data 5_related to Extended Data Fig.9b

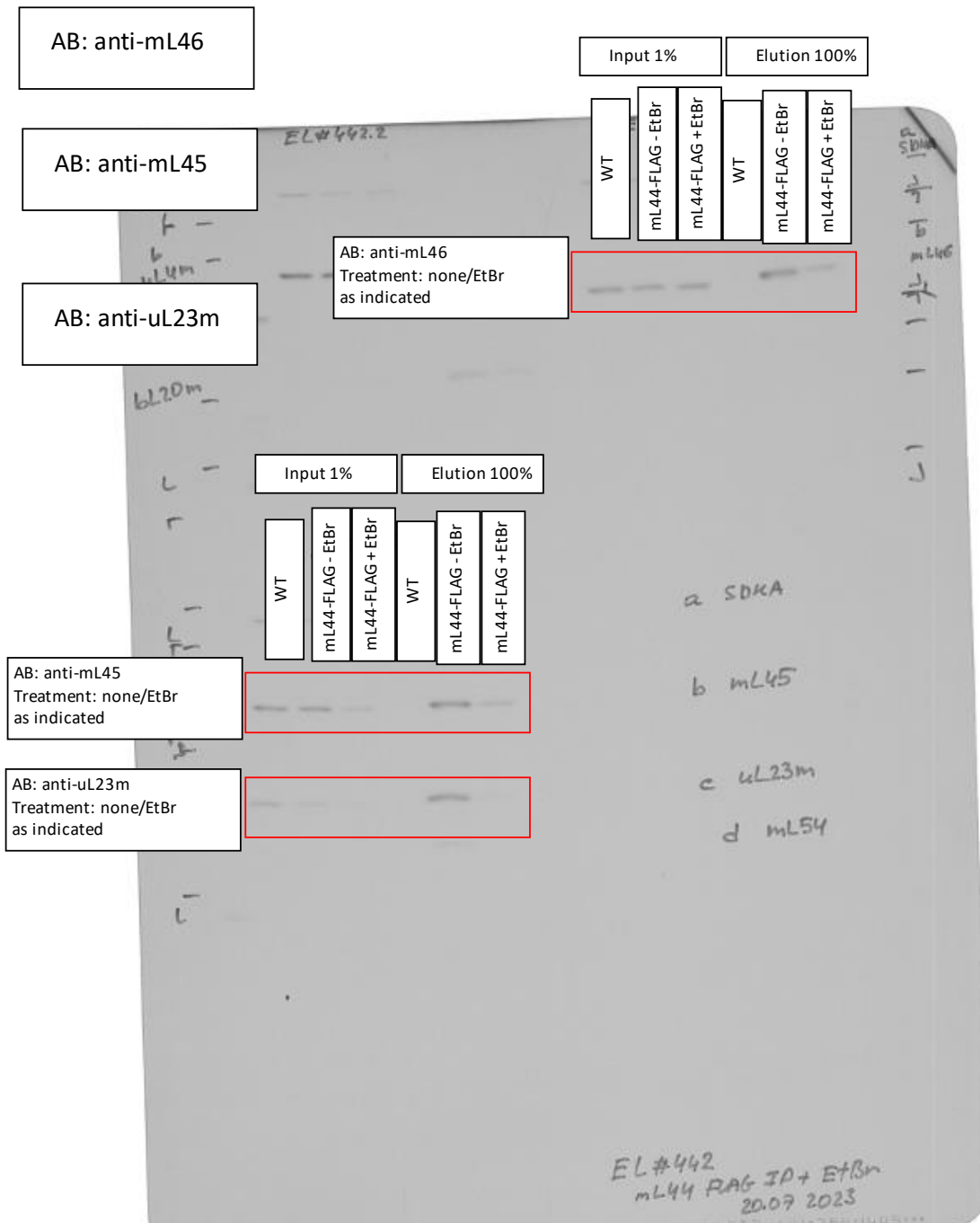
EL#353 mL44-FLAG IP + Gradient

Rotor: SW41 Ti

Gradient: Sucrose 5-30%

Speed: 158.000xg

Time: 15h



Source Data 5_related to Extended Data Fig.9b

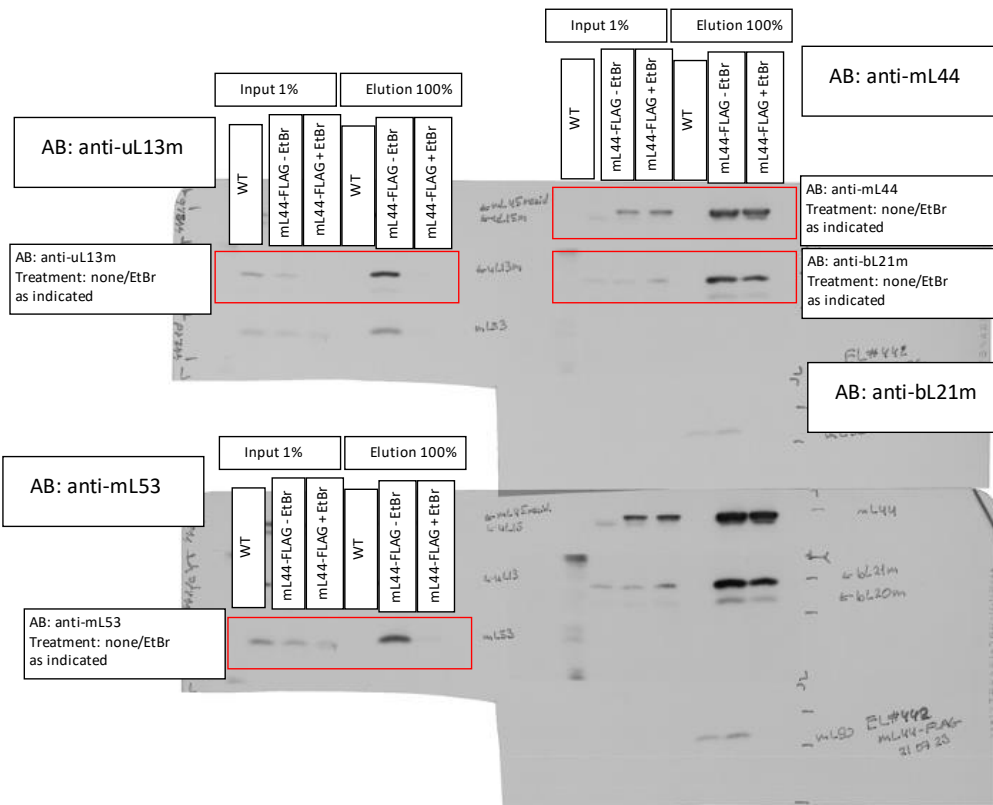
EL#353 mL44-FLAG IP + Gradient

Rotor: SW41 Ti

Gradient: Sucrose 5-30%

Speed: 158.000xg

Time: 15h



Source Data 5_related to Extended Data Fig.9b

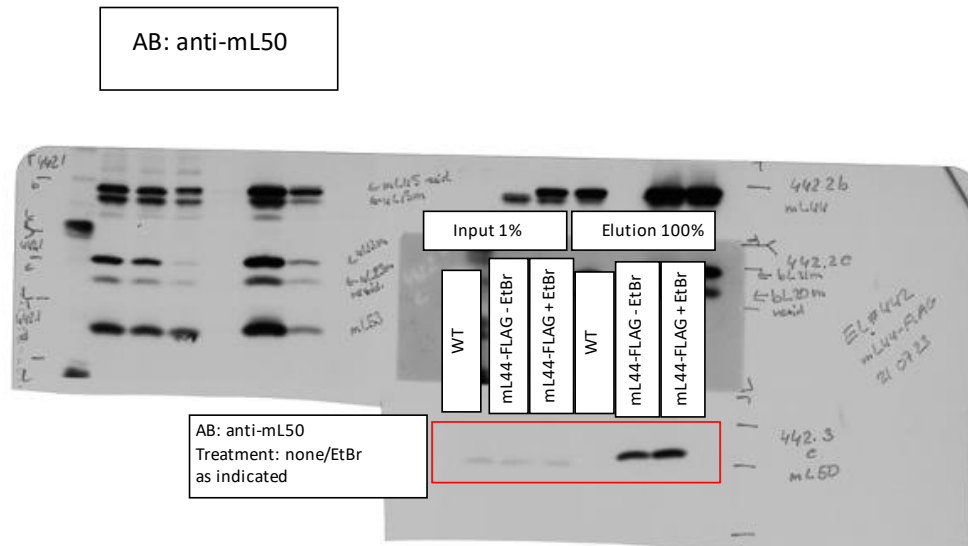
EL#353 mL44-FLAG IP + Gradient

Rotor: SW41 Ti

Gradient: Sucrose 5-30%

Speed: 158.000xg

Time: 15h



Source Data 5_related to Extended Data Fig.9b

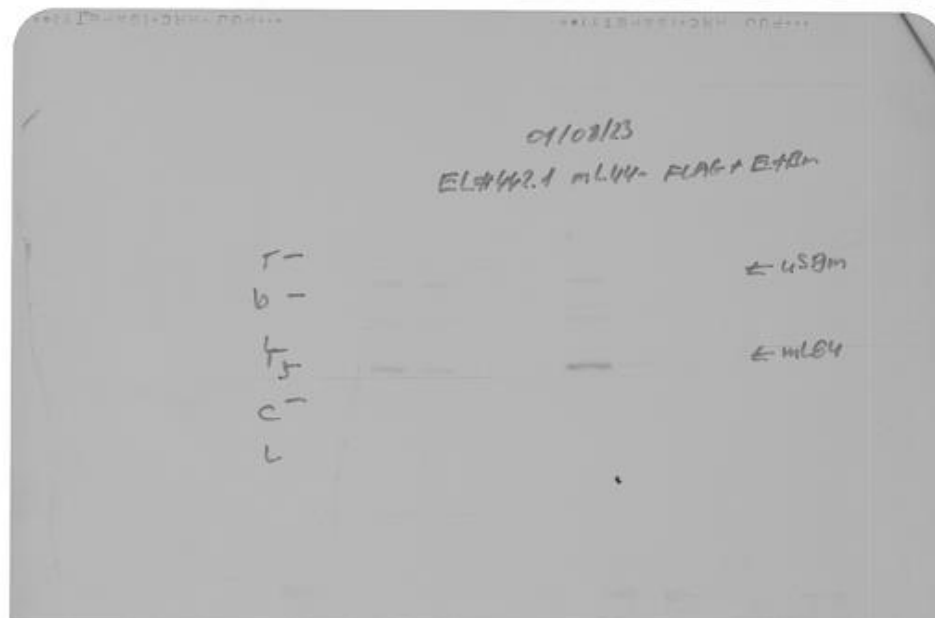
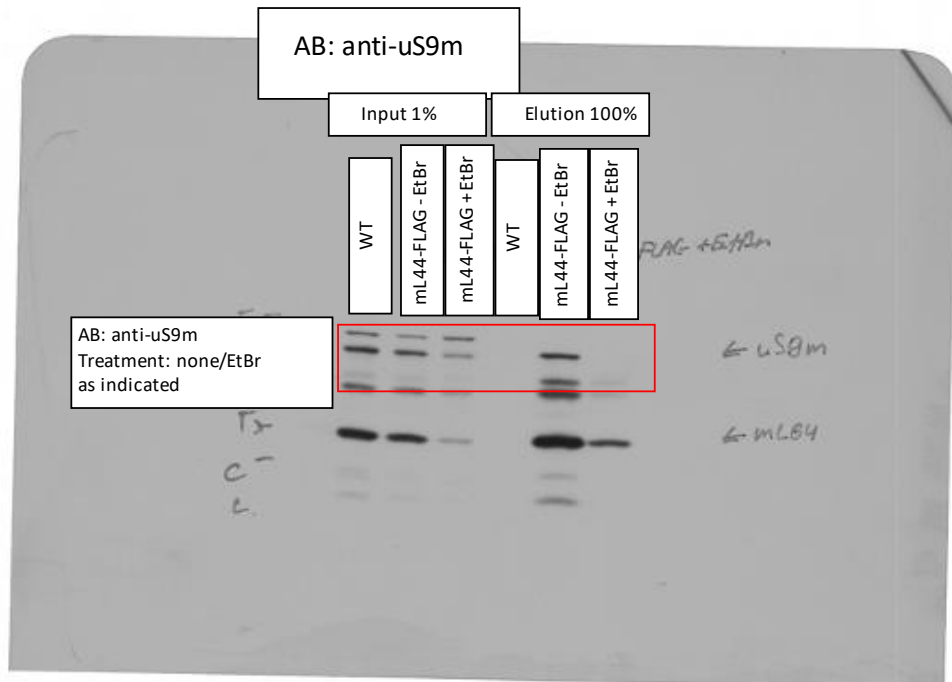
EL#353 mL44-FLAG IP + Gradient

Rotor: SW41 Ti

Gradient: Sucrose 5-30%

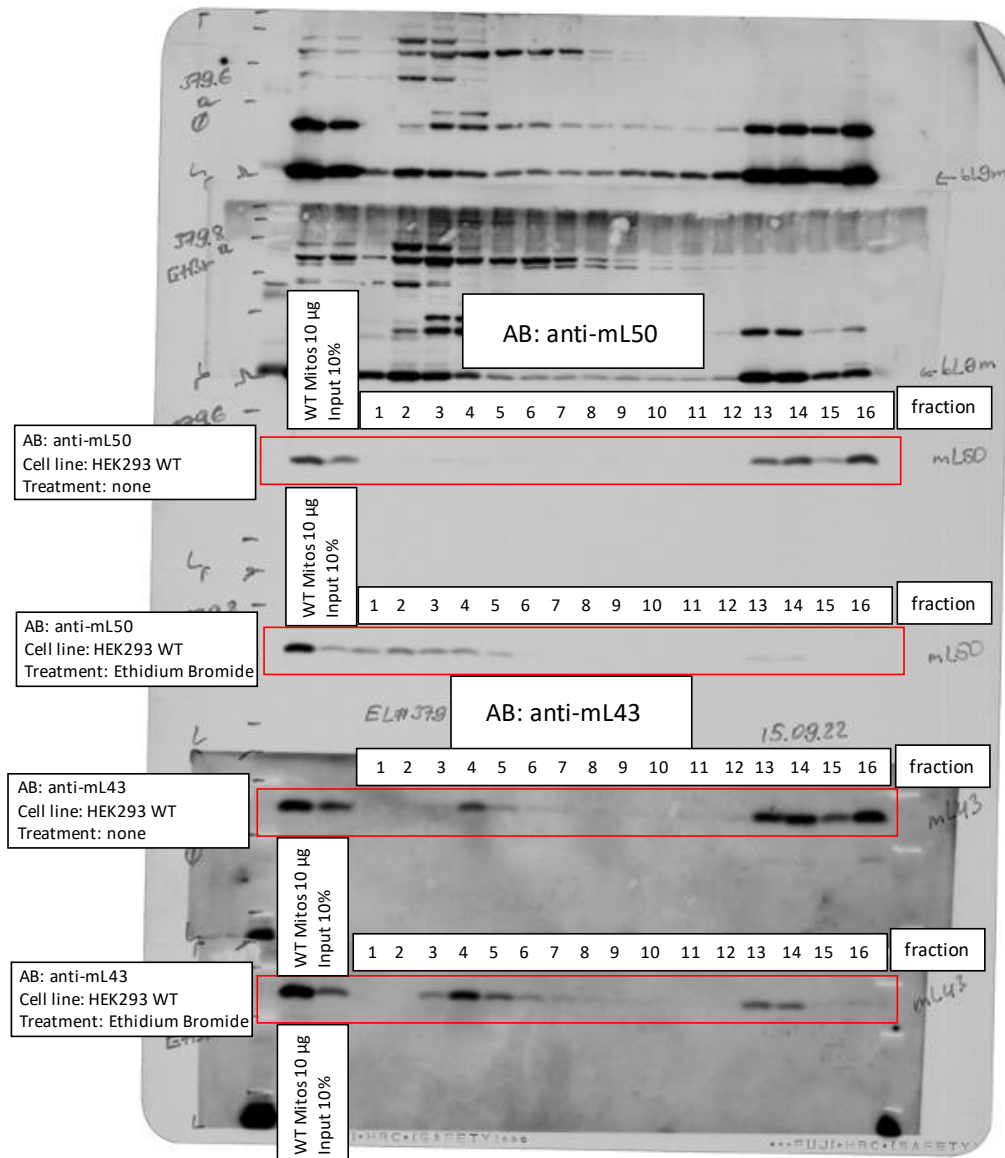
Speed: 158.000xg

Time: 15h



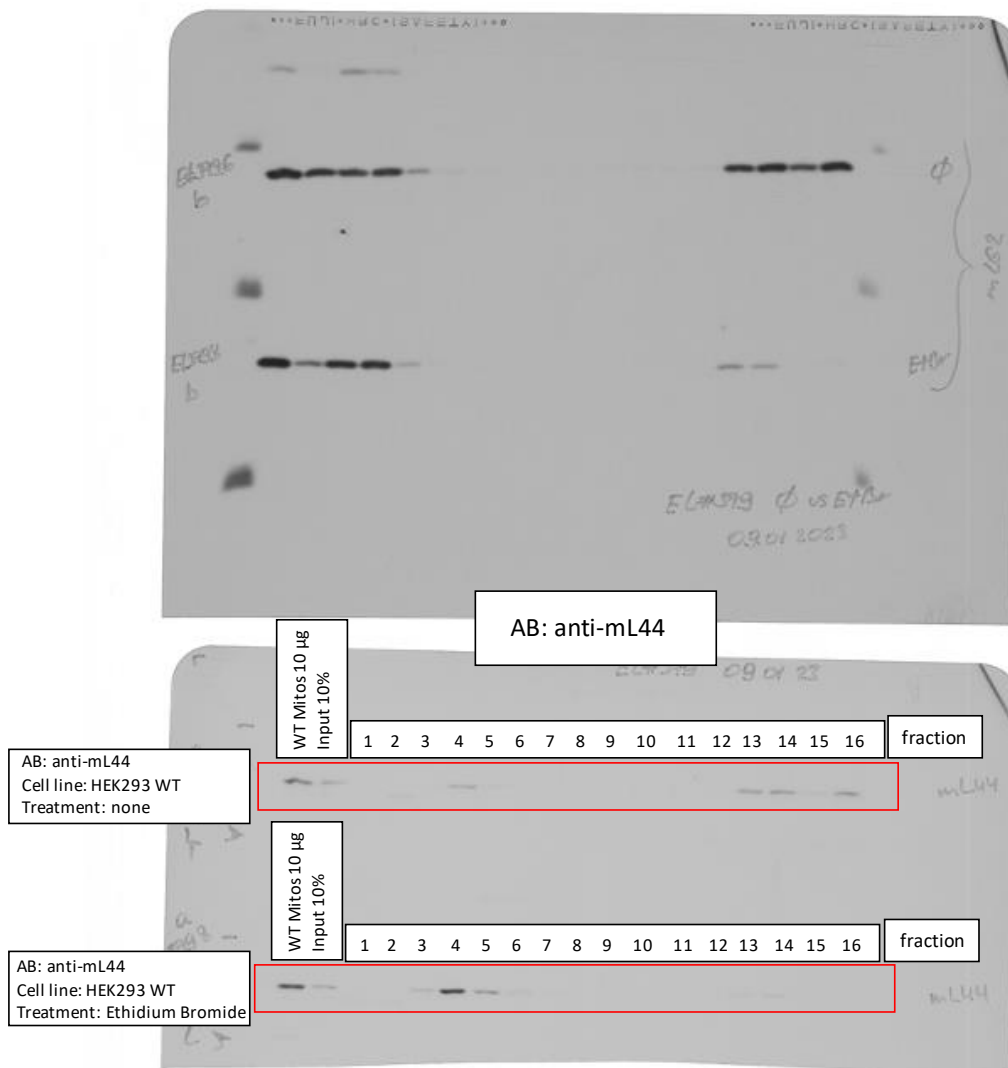
Source Data 5_related to Extended Data Fig.9c
 EL#363 HEK293 WT + Ethidium Bromide treatment + Gradient
 EL#379 HEK293 WT + Ethidium Bromide treatment + Gradient

Rotor: SW41 Ti
 Gradient: Sucrose 5-30%
 Speed: 158.000xg
 Time: 15h



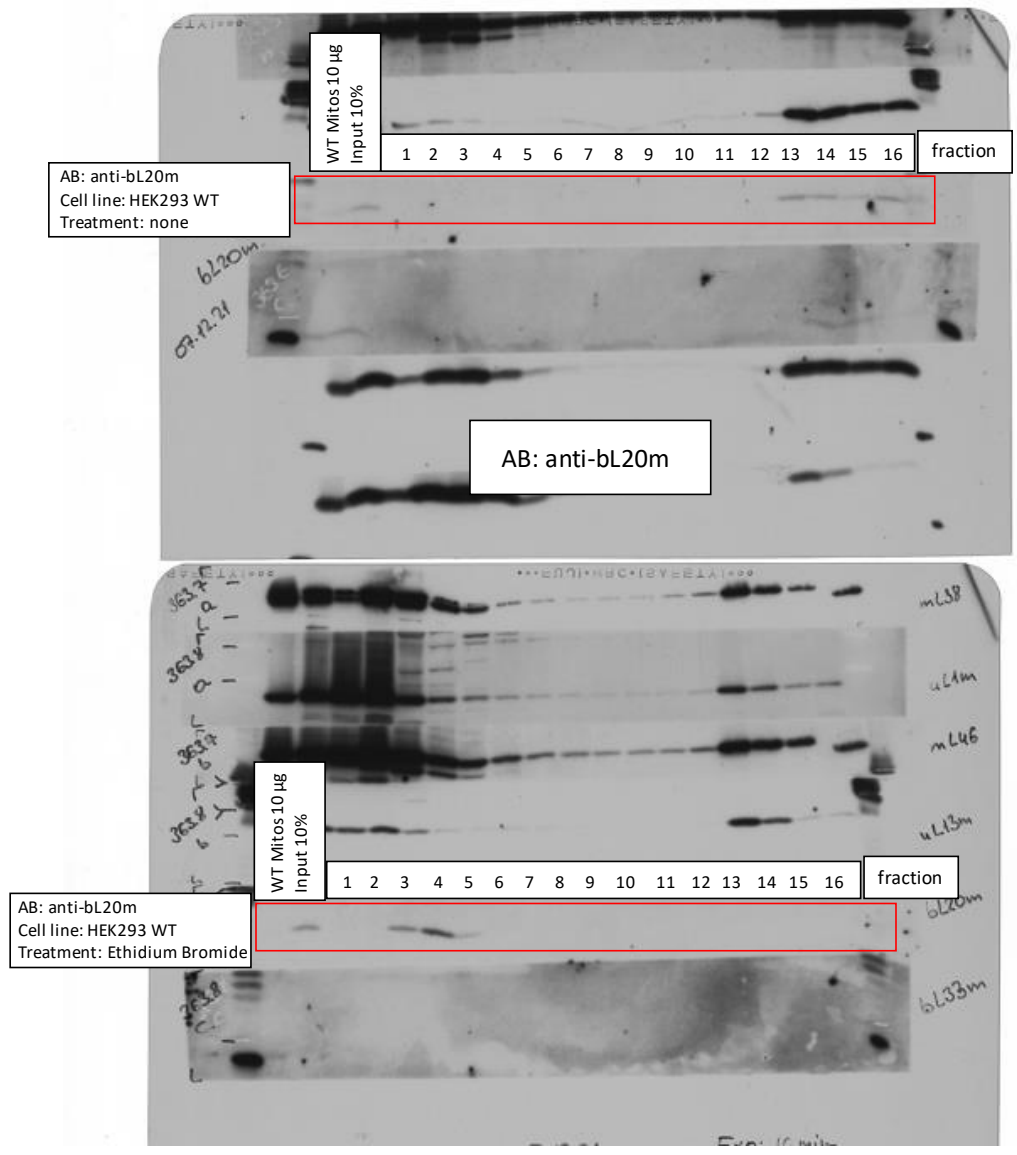
Source Data 5_related to Extended Data Fig.9c
 EL#363 HEK293 WT + Ethidium Bromide treatment + Gradient
 EL#379 HEK293 WT + Ethidium Bromide treatment + Gradient

Rotor: SW41 Ti
 Gradient: Sucrose 5-30%
 Speed: 158.000xg
 Time: 15h



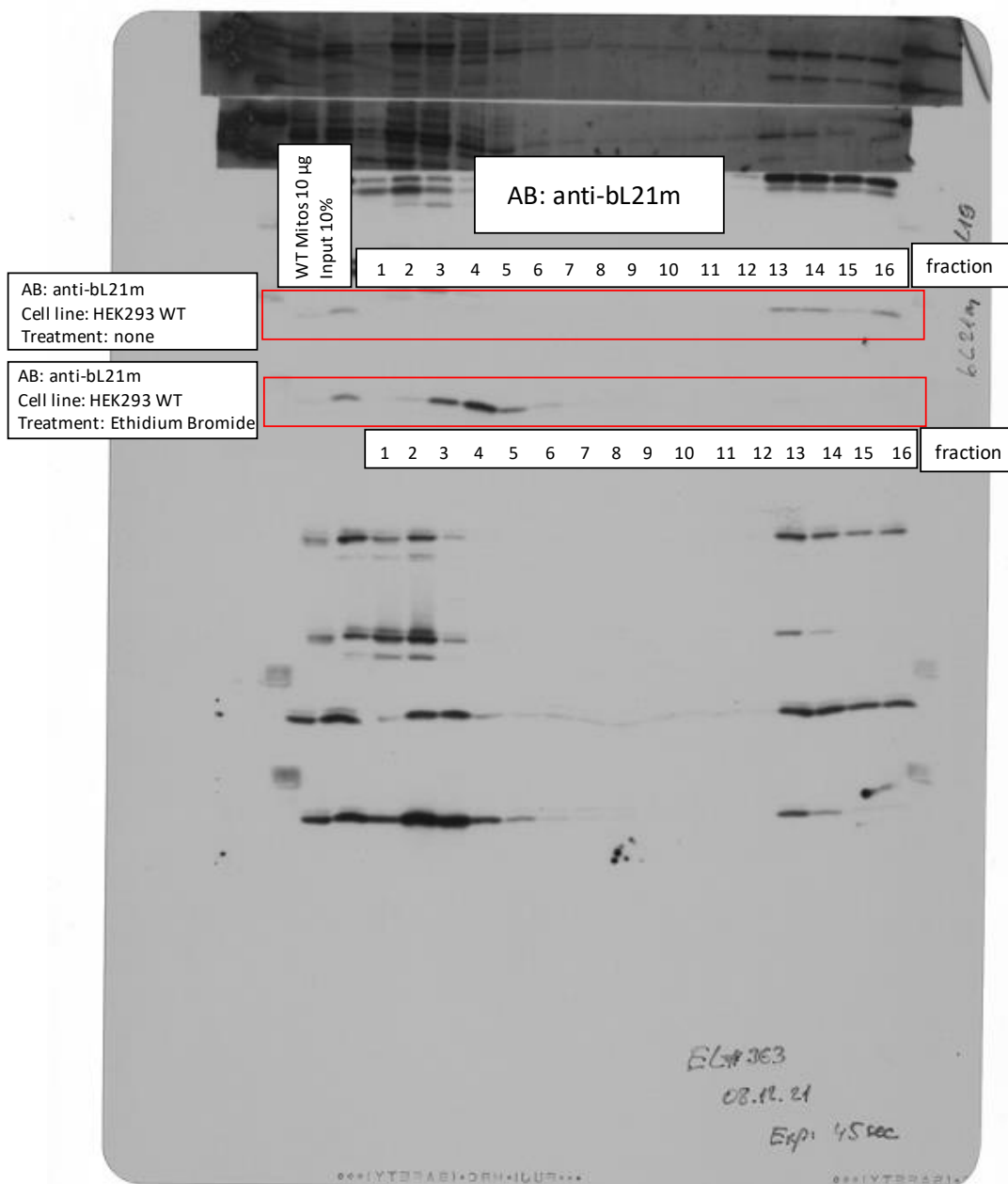
Source Data 5_related to Extended Data Fig.9c
 EL#363 HEK293 WT + Ethidium Bromide treatment + Gradient
 EL#379 HEK293 WT + Ethidium Bromide treatment + Gradient

Rotor: SW41 Ti
 Gradient: Sucrose 5-30%
 Speed: 158.000xg
 Time: 15h



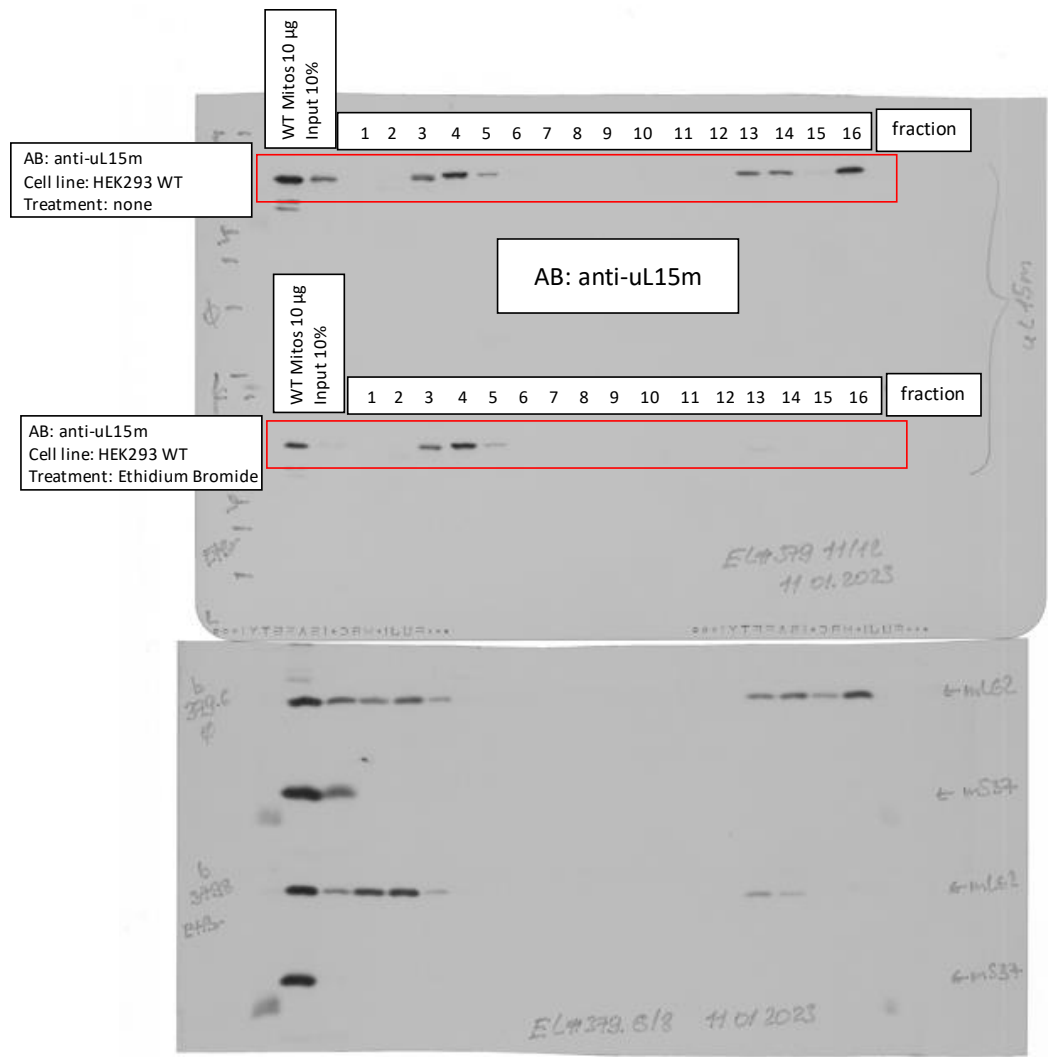
Source Data 5_related to Extended Data Fig.9c
EL#363 HEK293 WT + Ethidium Bromide treatment + Gradient
EL#379 HEK293 WT + Ethidium Bromide treatment + Gradient

Rotor: SW41 Ti
Gradient: Sucrose 5-30%
Speed: 158.000xg
Time: 15h



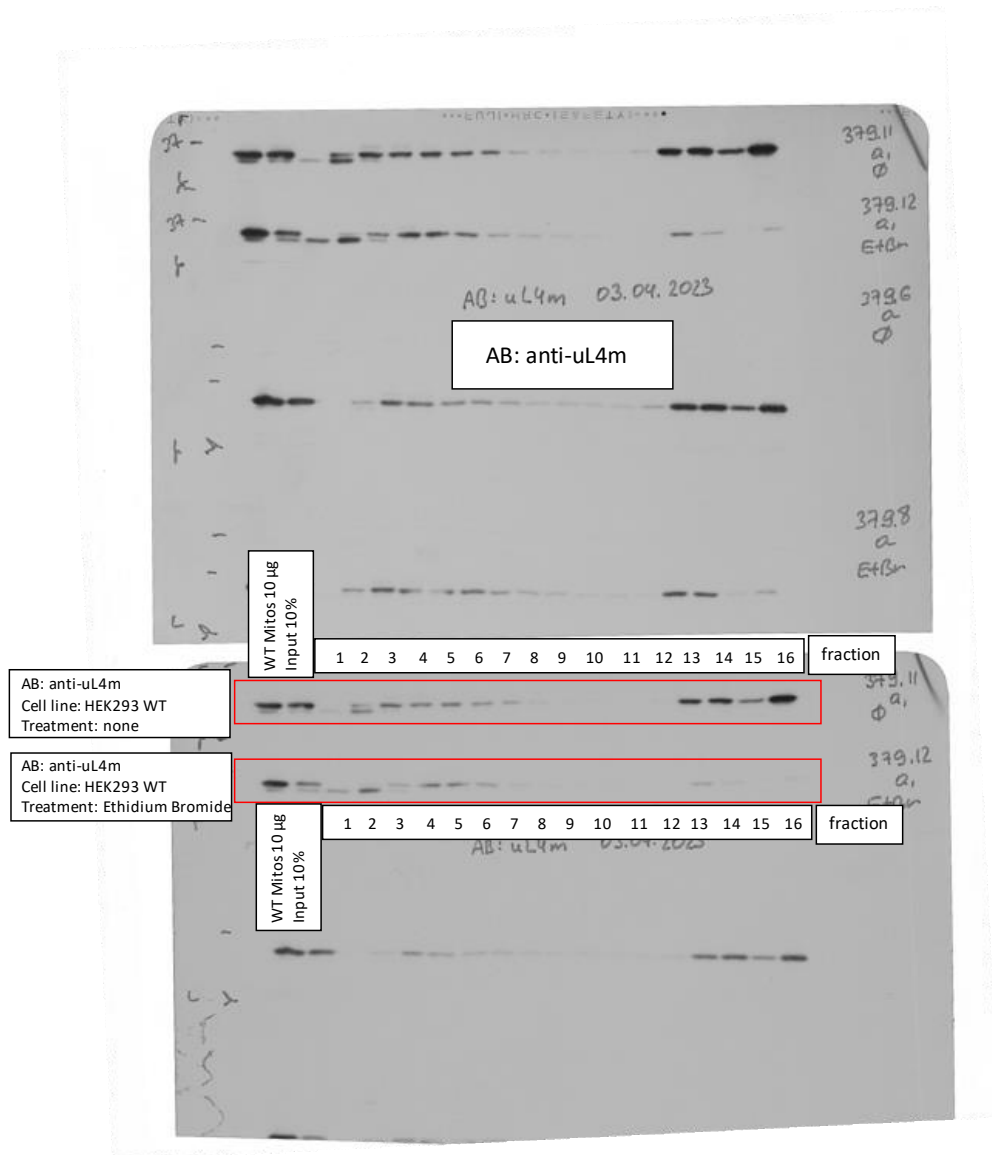
Source Data 5_related to Extended Data Fig.9c
 EL#363 HEK293 WT + Ethidium Bromide treatment + Gradient
 EL#379 HEK293 WT + Ethidium Bromide treatment + Gradient

Rotor: SW41 Ti
 Gradient: Sucrose 5-30%
 Speed: 158.000xg
 Time: 15h

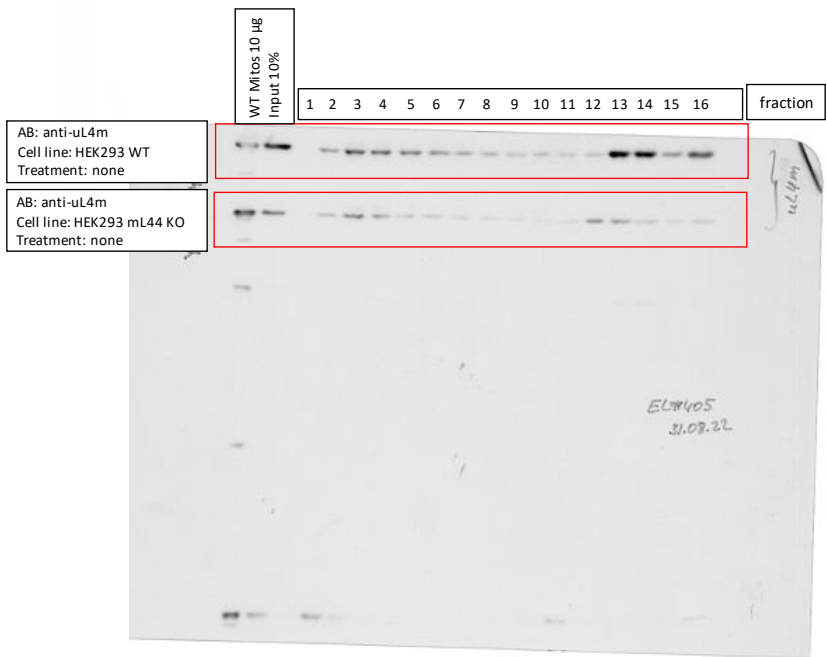
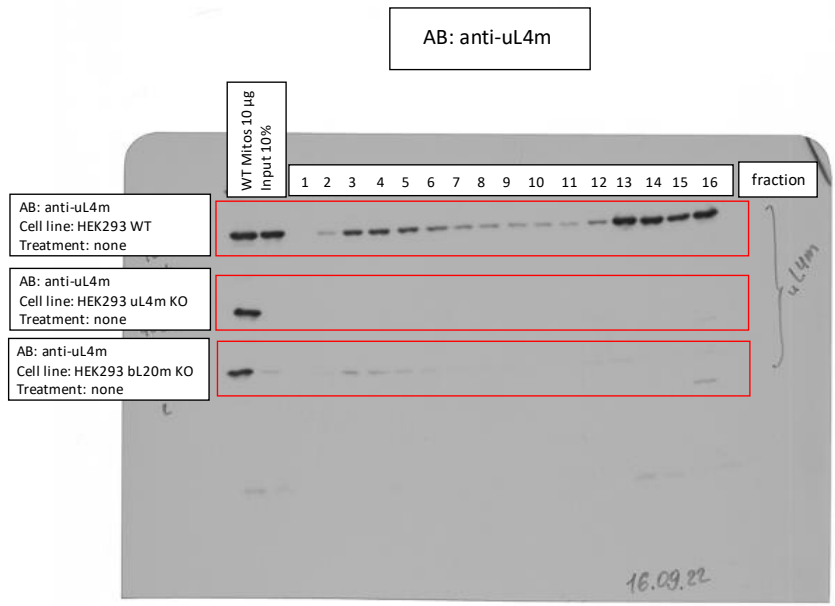


Source Data 5_related to Extended Data Fig.9c
 EL#363 HEK293 WT + Ethidium Bromide treatment + Gradient
 EL#379 HEK293 WT + Ethidium Bromide treatment + Gradient

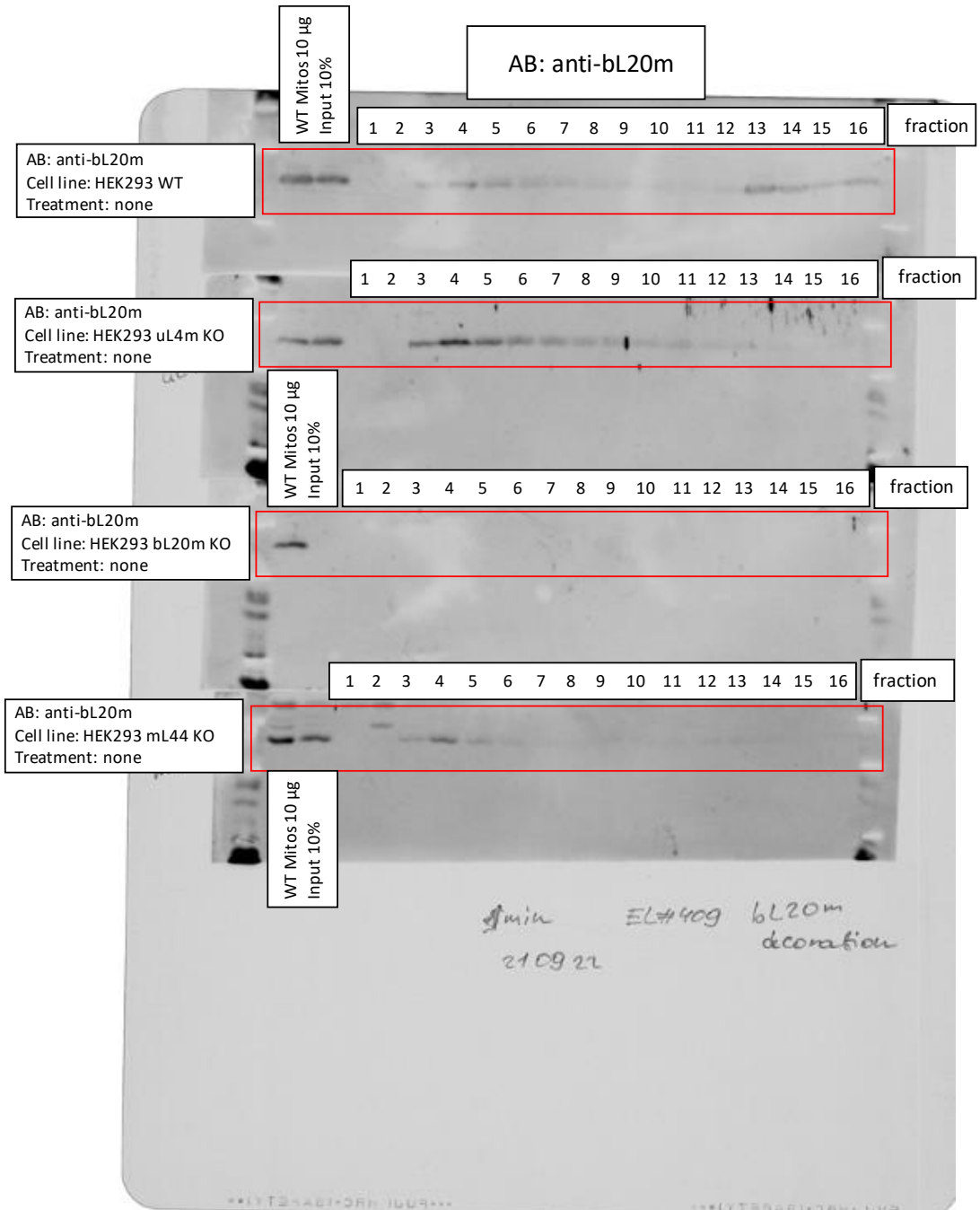
Rotor: SW41 Ti
 Gradient: Sucrose 5-30%
 Speed: 158.000xg
 Time: 15h



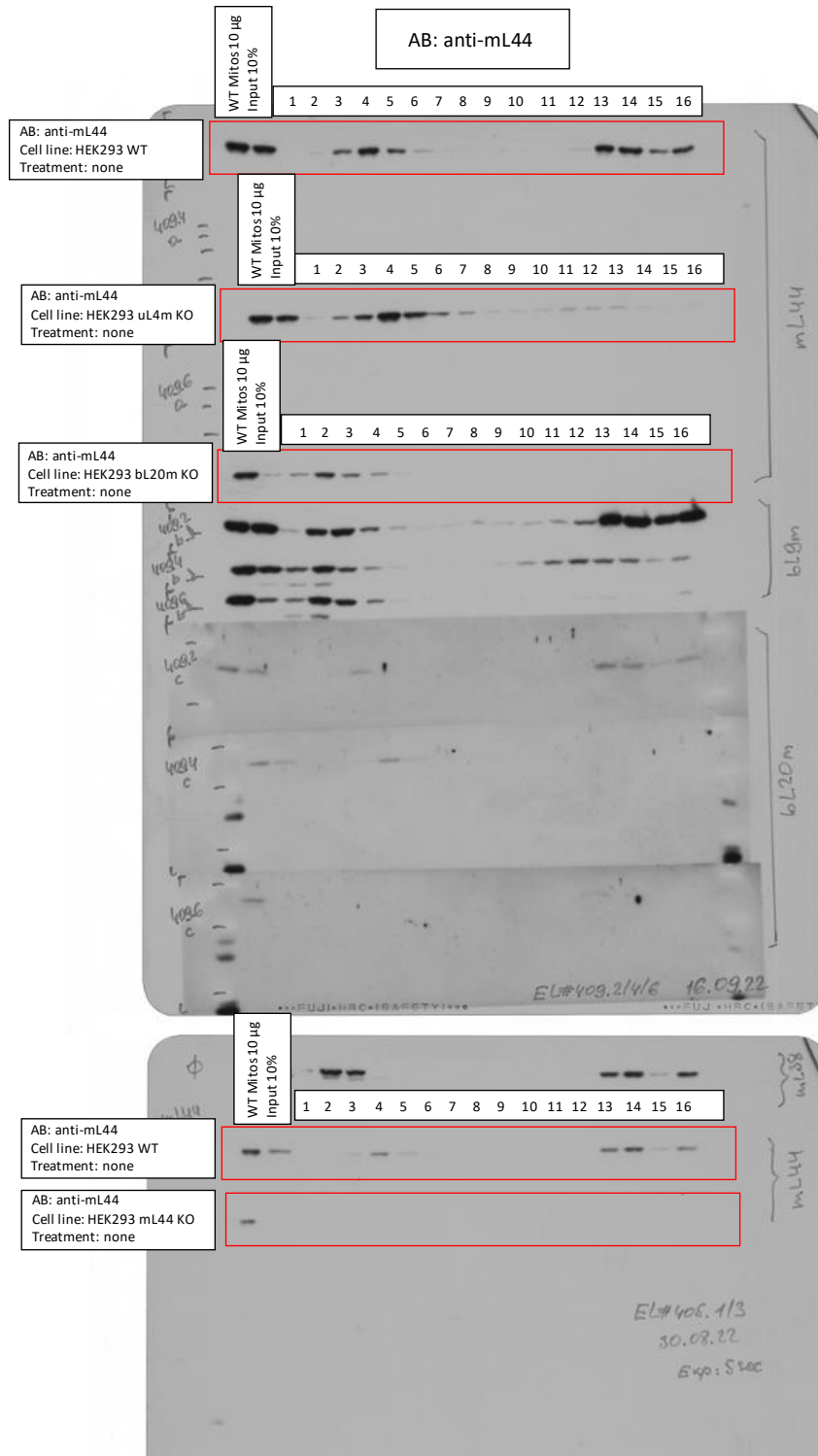
Source Data 5_related to Extended Data Fig.9d
 EL#405 HEK293 WT vs. HEK293 mL44 KO + Gradient
 EL#409 HEK293 WT vs. HEK293 uL4m KO and bL20m KO
 Rotor: SW41 Ti
 Gradient: Sucrose 5-30%
 Speed: 158.000xg
 Time: 15h



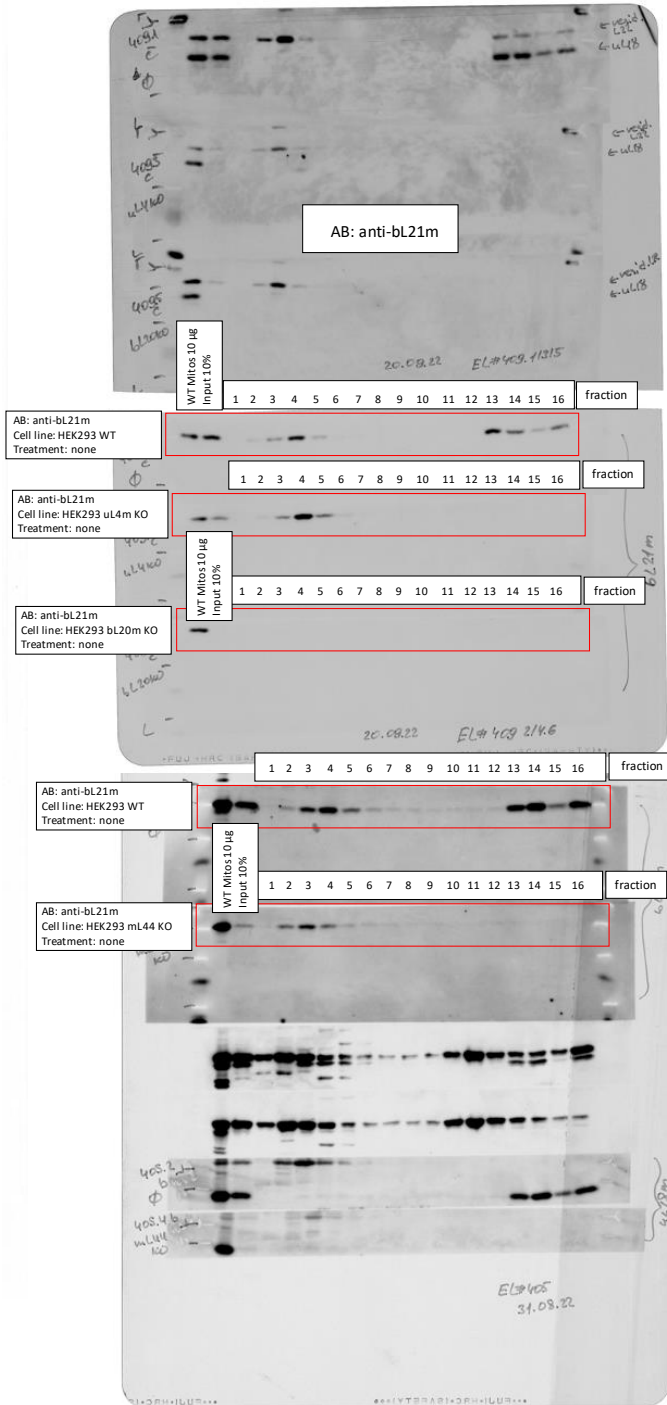
Source Data 5_related to Extended Data Fig.9d
 EL#405 HEK293 WT vs. HEK293 mL44 KO + Gradient
 EL#409 HEK293 WT vs. HEK293 uL4m KO and bL20m KO
 Rotor: SW41 Ti
 Gradient: Sucrose 5-30%
 Speed: 158.000xg
 Time: 15h



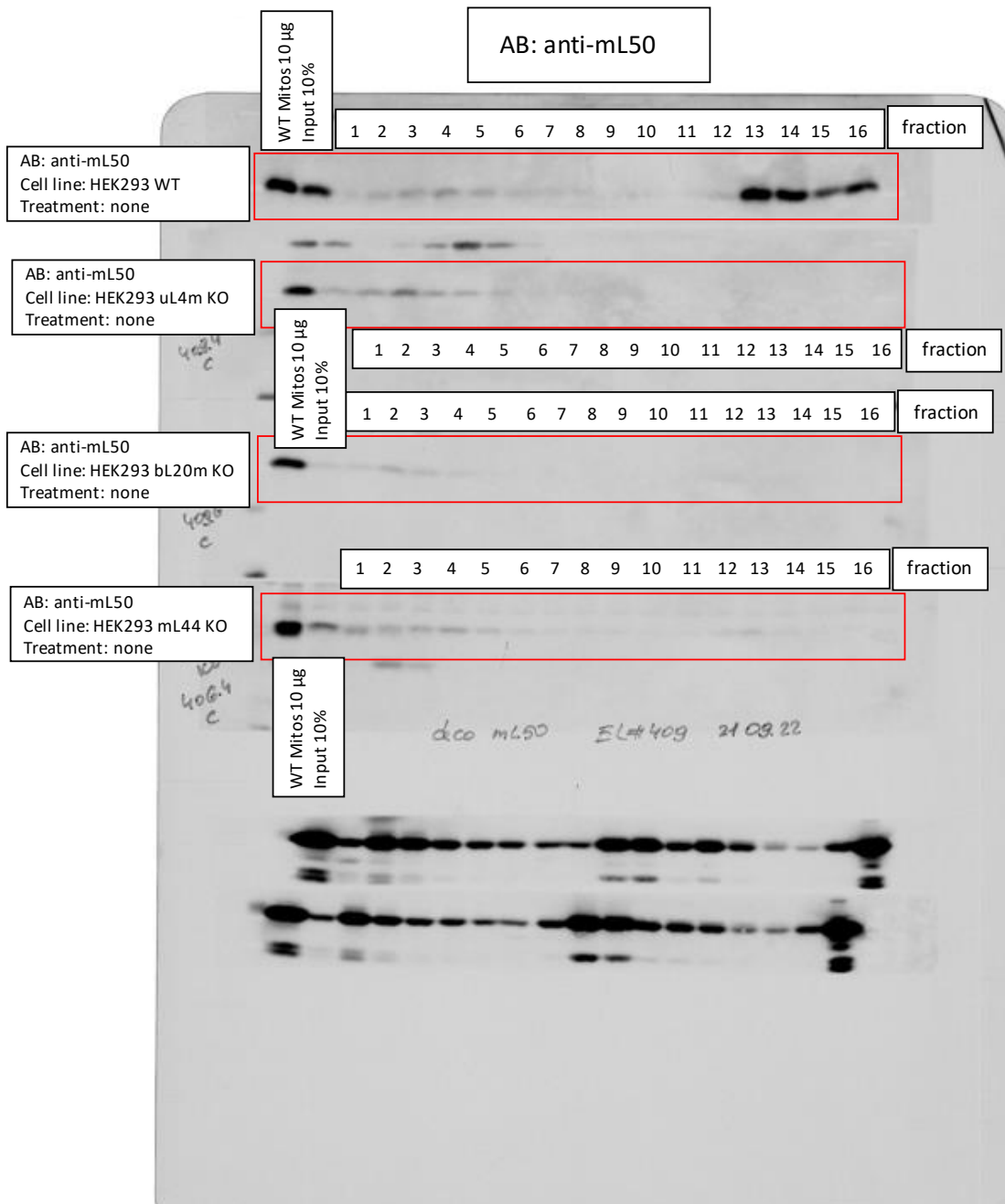
Source Data 5_related to Extended Data Fig.9d
 EL#405 HEK293 WT vs. HEK293 mL44 KO + Gradient
 EL#409 HEK293 WT vs. HEK293 uL4m KO and bL20m KO
 Rotor: SW41 Ti
 Gradient: Sucrose 5-30%
 Speed: 158.000xg
 Time: 15h



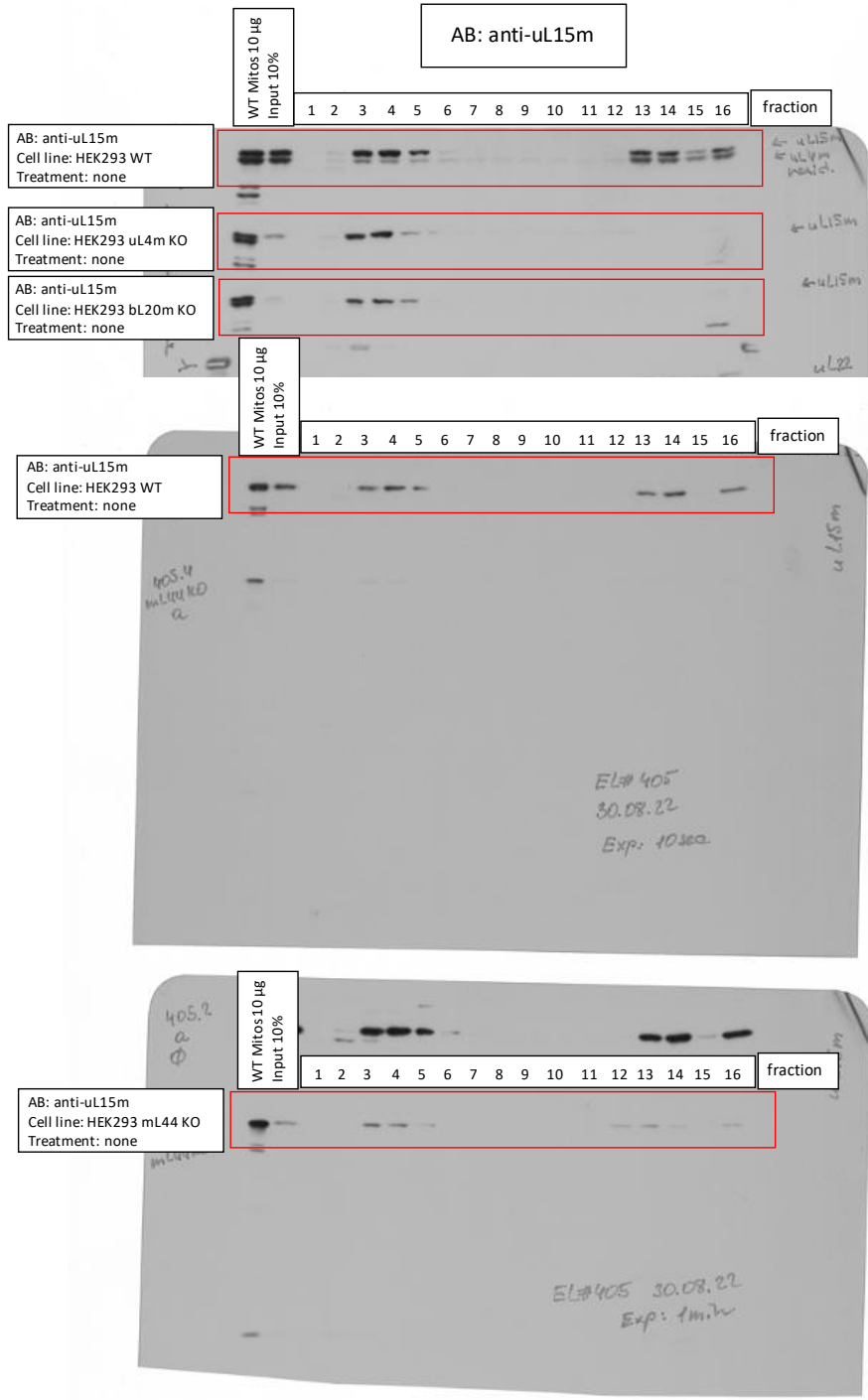
Source Data 5_related to Extended Data Fig.9d
 EL#405 HEK293 WT vs. HEK293 mL44 KO + Gradient
 EL#409 HEK293 WT vs. HEK293 uL4m KO and bL20m KO
 Rotor: SW41 Ti
 Gradient: Sucrose 5-30%
 Speed: 158.000xg
 Time: 15h



Source Data 5_related to Extended Data Fig.9d
 EL#405 HEK293 WT vs. HEK293 mL44 KO + Gradient
 EL#409 HEK293 WT vs. HEK293 uL4m KO and bL20m KO
 Rotor: SW41 Ti
 Gradient: Sucrose 5-30%
 Speed: 158.000xg
 Time: 15h

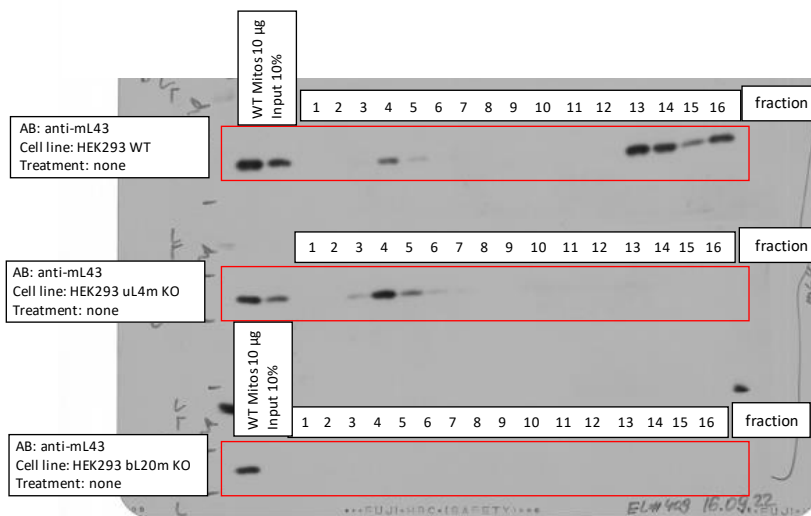
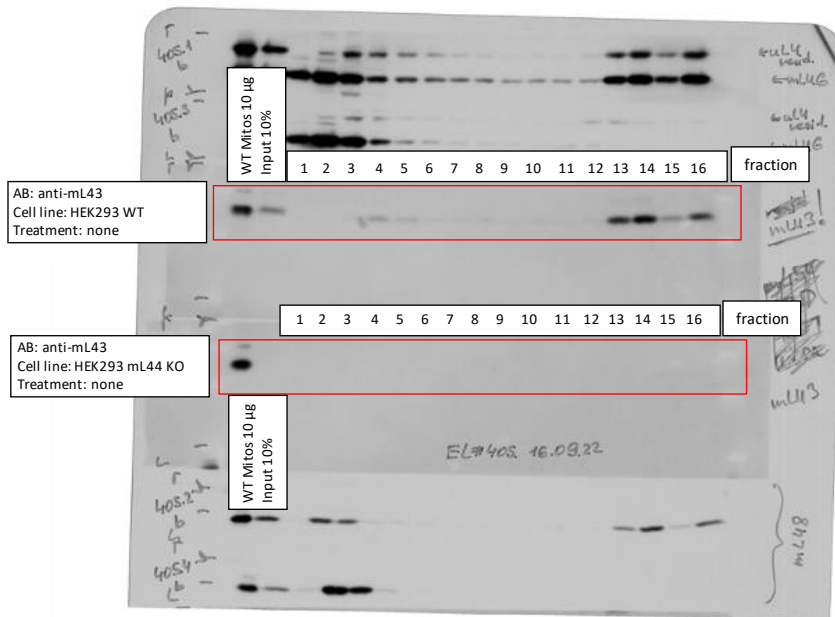


Source Data 5_related to Extended Data Fig.9d
 EL#405 HEK293 WT vs. HEK293 mL44 KO + Gradient
 EL#409 HEK293 WT vs. HEK293 uL4m KO and bL20m KO
 Rotor: SW41 Ti
 Gradient: Sucrose 5-30%
 Speed: 158.000xg
 Time: 15h

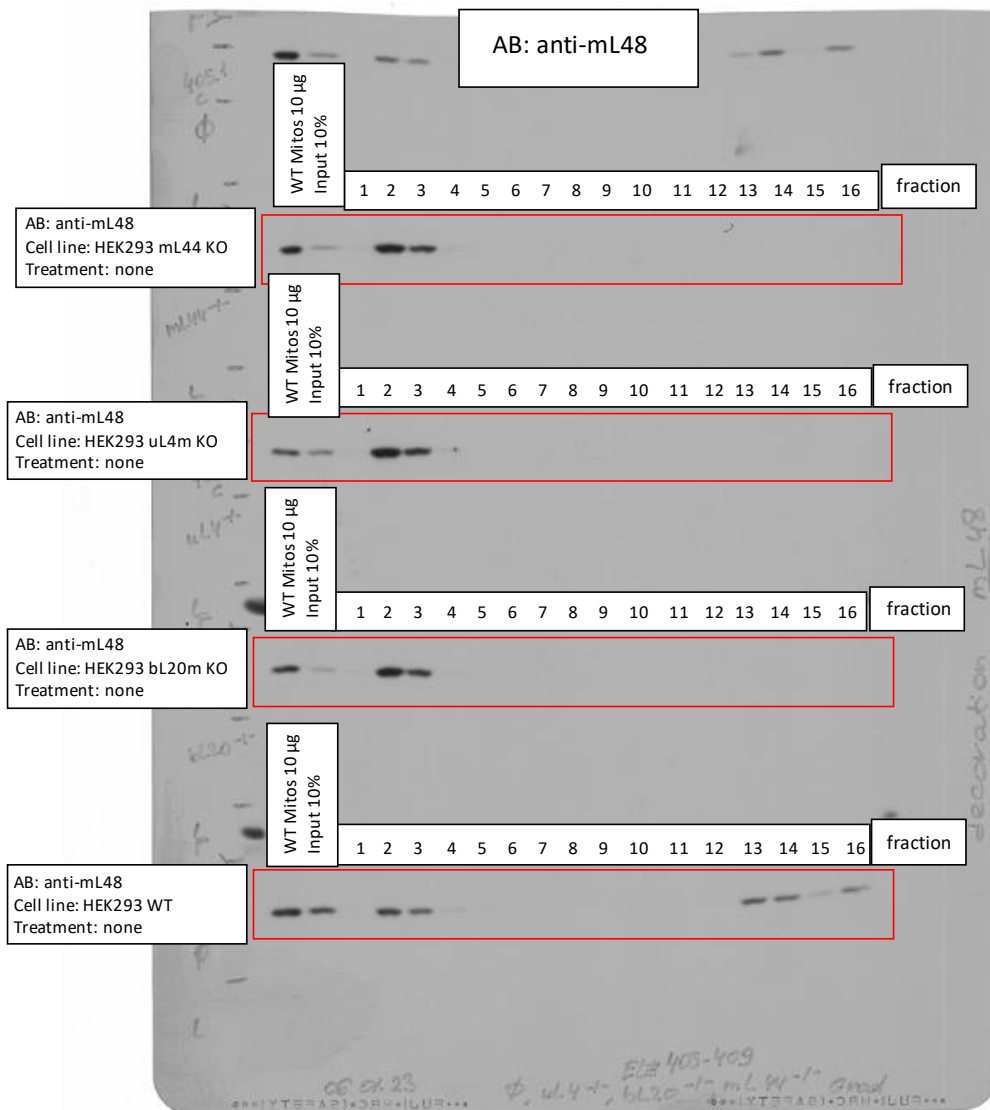


Source Data 5_related to Extended Data Fig.9d
 EL#405 HEK293 WT vs. HEK293 mL44 KO + Gradient
 EL#409 HEK293 WT vs. HEK293 uL4m KO and bL20m KO
 Rotor: SW41 Ti
 Gradient: Sucrose 5-30%
 Speed: 158.000xg
 Time: 15h

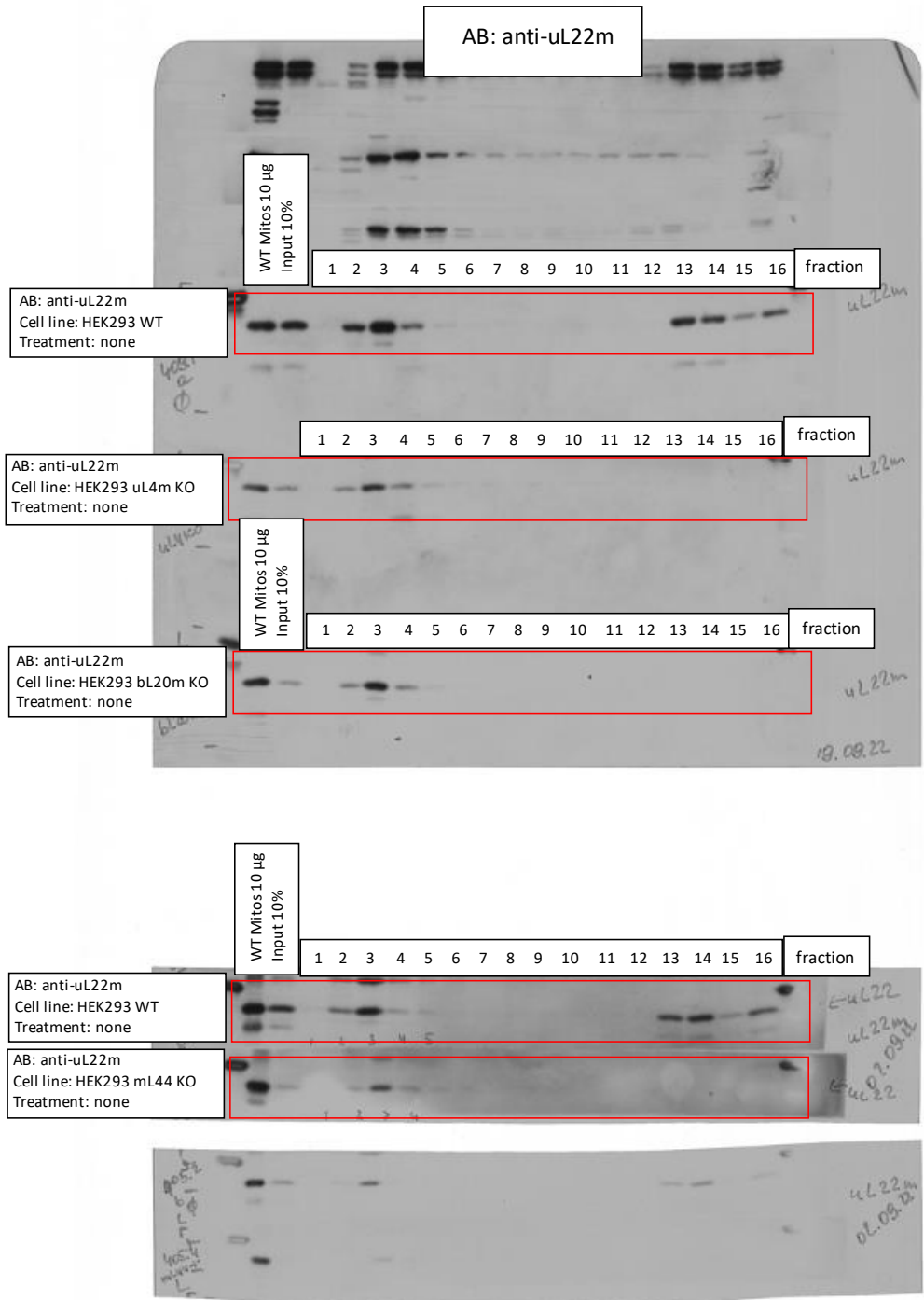
AB: anti-mL43



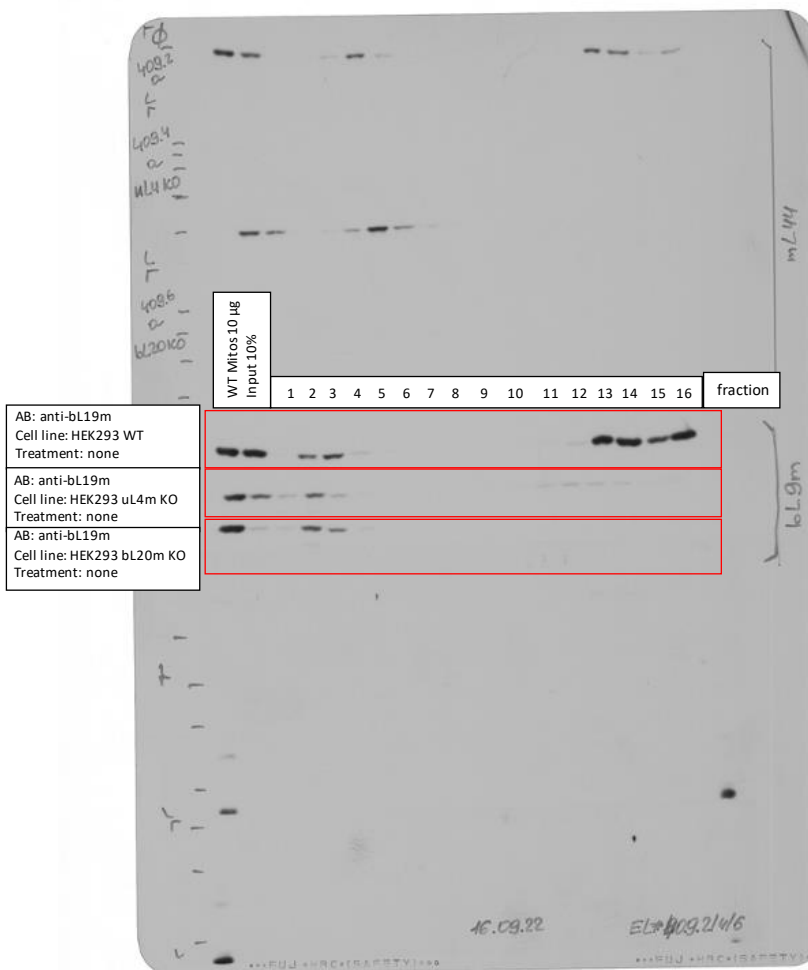
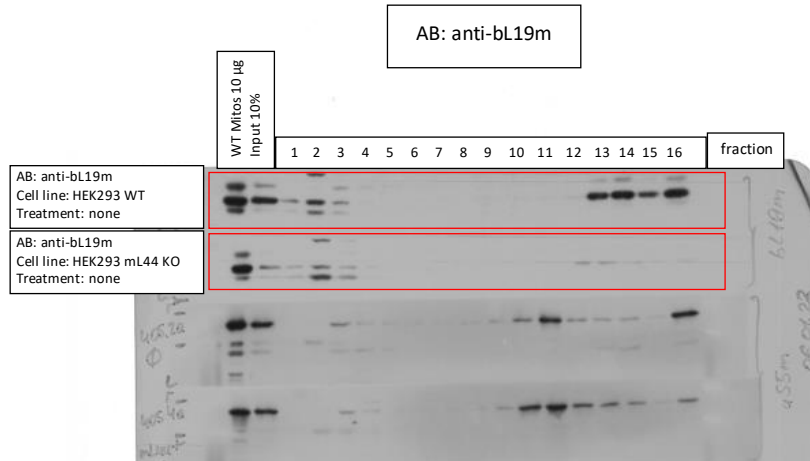
Source Data 5_related to Extended Data Fig.9d
 EL#405 HEK293 WT vs. HEK293 mL44 KO + Gradient
 EL#409 HEK293 WT vs. HEK293 uL4m KO and bL20m KO
 Rotor: SW41 Ti
 Gradient: Sucrose 5-30%
 Speed: 158.000xg
 Time: 15h



Source Data 5_related to Extended Data Fig.9d
 EL#405 HEK293 WT vs. HEK293 mL44 KO + Gradient
 EL#409 HEK293 WT vs. HEK293 uL4m KO and bL20m KO
 Rotor: SW41 Ti
 Gradient: Sucrose 5-30%
 Speed: 158.000xg
 Time: 15h



Source Data 5_related to Extended Data Fig.9d
 EL#405 HEK293 WT vs. HEK293 mL44 KO + Gradient
 EL#409 HEK293 WT vs. HEK293 uL4m KO and bL20m KO
 Rotor: SW41 Ti
 Gradient: Sucrose 5-30%
 Speed: 158.000xg
 Time: 15h



Source Data 5_related to Extended Data Fig.9d
 EL#405 HEK293 WT vs. HEK293 mL44 KO + Gradient
 EL#409 HEK293 WT vs. HEK293 uL4m KO and bL20m KO
 Rotor: SW41 Ti
 Gradient: Sucrose 5-30%
 Speed: 158.000xg
 Time: 15h

