

Source Data 6_related to Extended Data Fig.10a

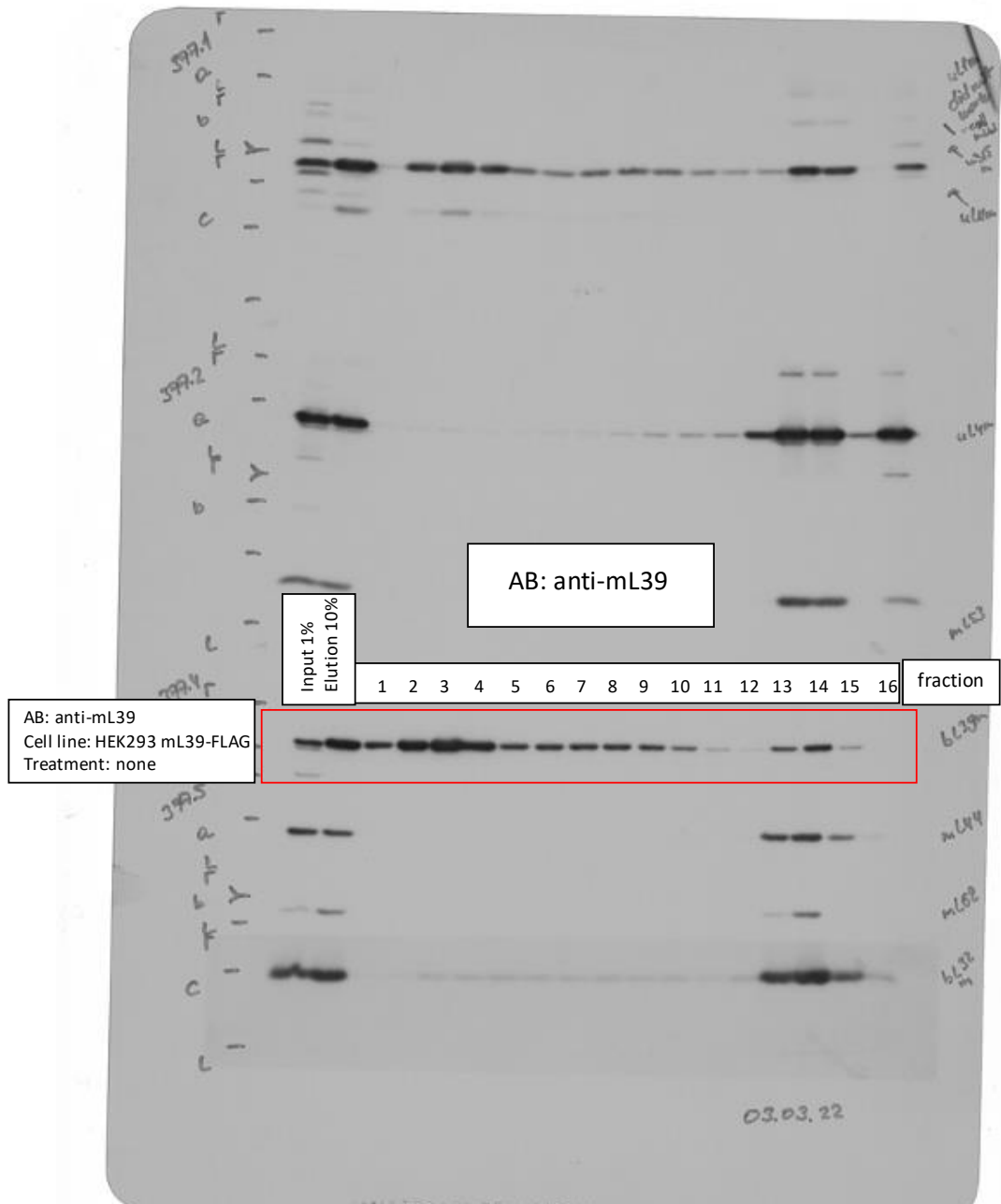
EL#377.4-6 mL39-FLAG IP + Gradient

Rotor: SW41 Ti

Gradient: Sucrose 5-30%

Speed: 158.000xg

Time: 15h



Source Data 6_related to Extended Data Fig.10a

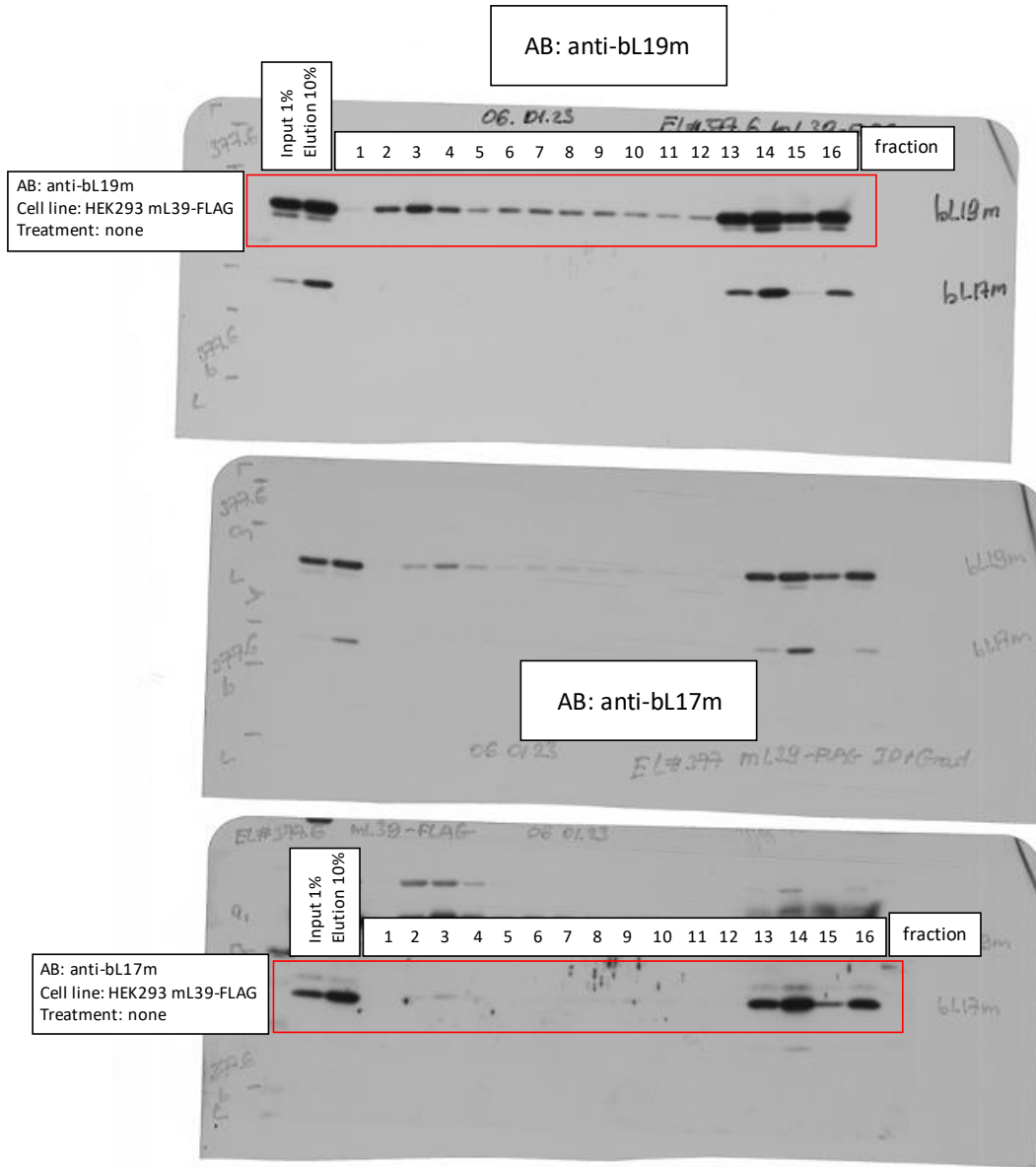
EL#377.4-6 mL39-FLAG IP + Gradient

Rotor: SW41 Ti

Gradient: Sucrose 5-30%

Speed: 158.000xg

Time: 15h



Source Data 6_related to Extended Data Fig.10a

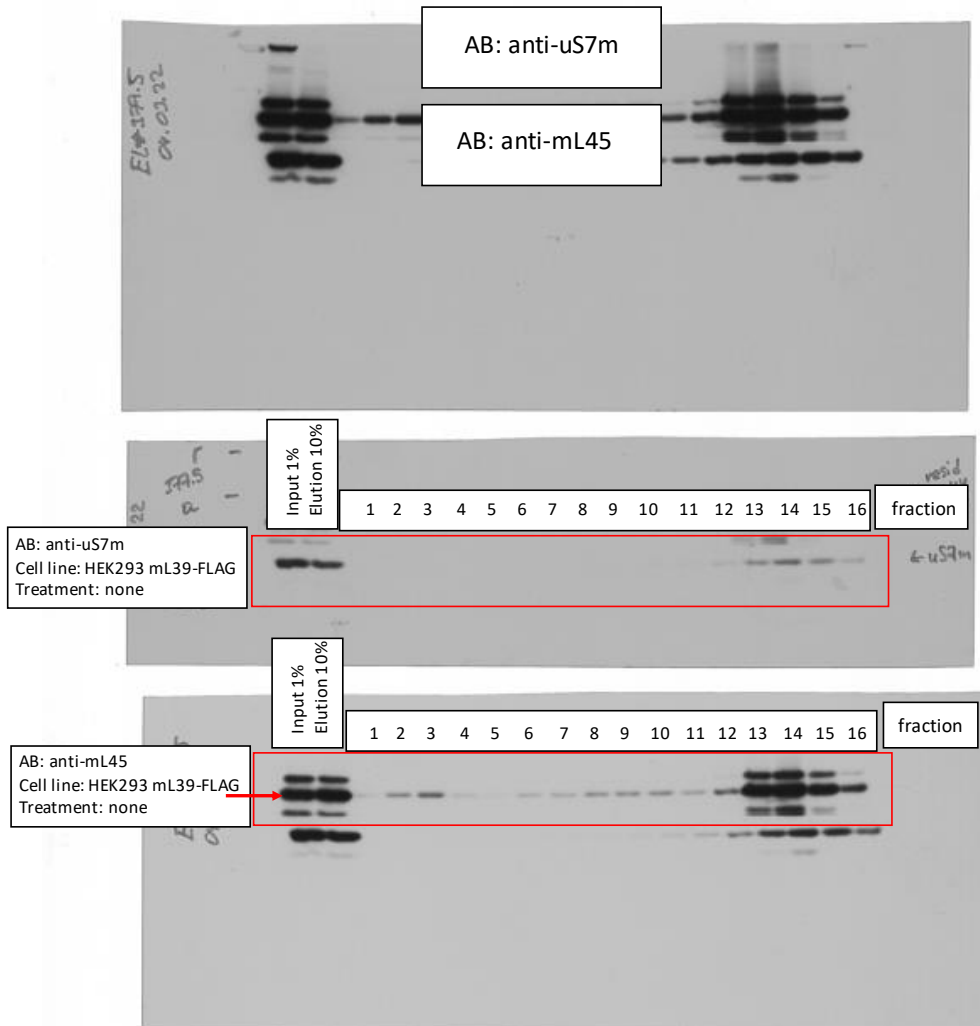
EL#377.4-6 mL39-FLAG IP + Gradient

Rotor: SW41 Ti

Gradient: Sucrose 5-30%

Speed: 158.000xg

Time: 15h



Source Data 6_related to Extended Data Fig.10a

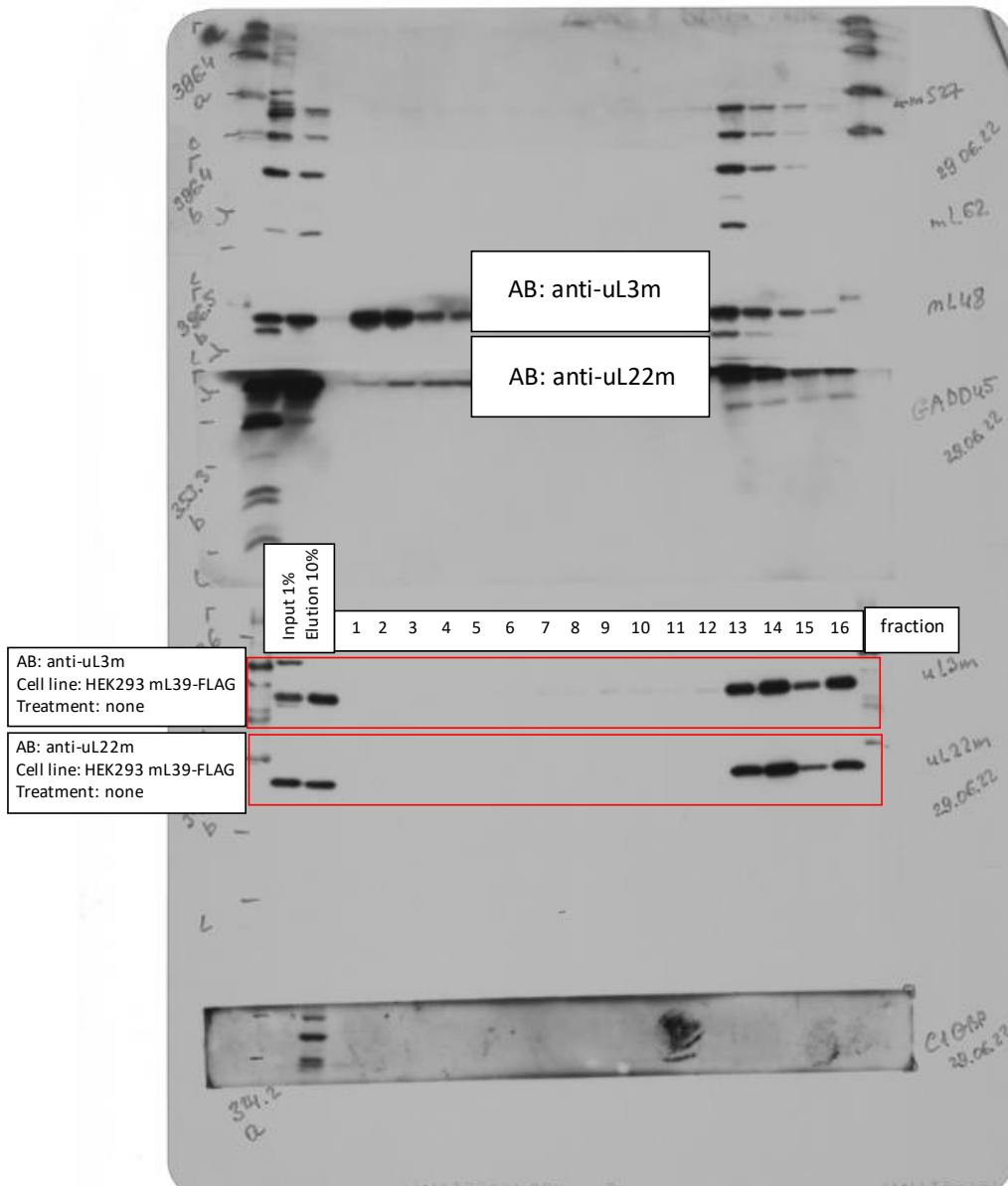
EL#377.4-6 mL39-FLAG IP + Gradient

Rotor: SW41 Ti

Gradient: Sucrose 5-30%

Speed: 158.000xg

Time: 15h



Source Data 6_related to Extended Data Fig.10a

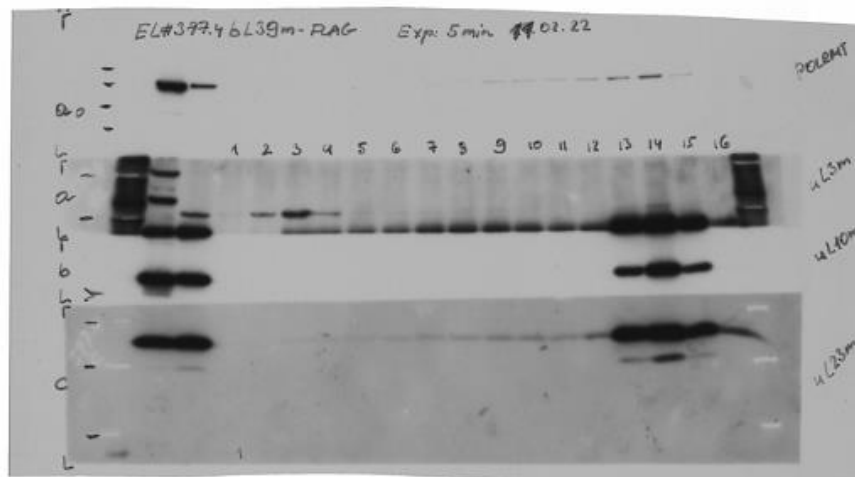
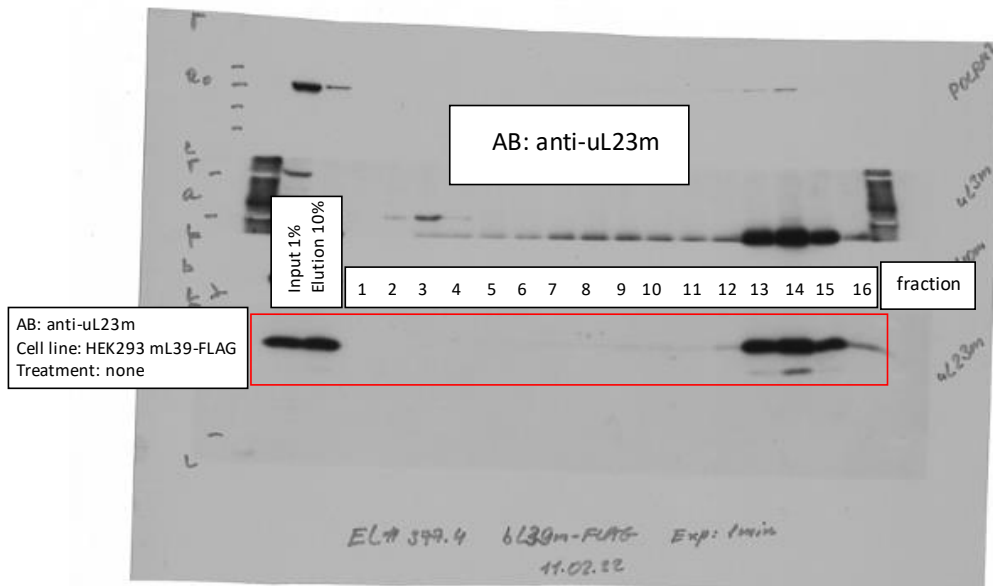
EL#377.4-6 mL39-FLAG IP + Gradient

Rotor: SW41 Ti

Gradient: Sucrose 5-30%

Speed: 158.000xg

Time: 15h



Source Data 6_related to Extended Data Fig.10a

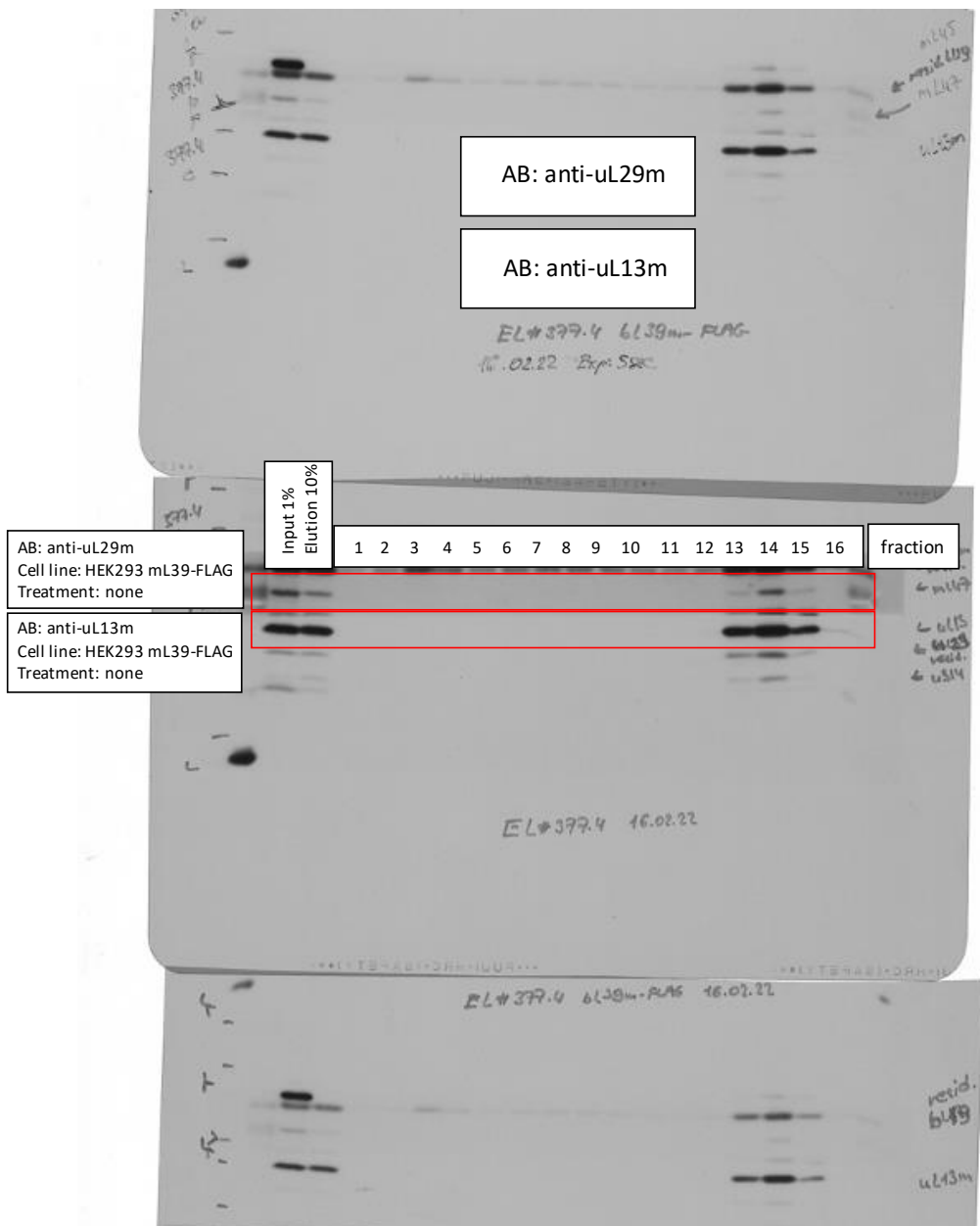
EL#377.4-6 mL39-FLAG IP + Gradient

Rotor: SW41 Ti

Gradient: Sucrose 5-30%

Speed: 158.000xg

Time: 15h



Source Data 6_related to Extended Data Fig.10a

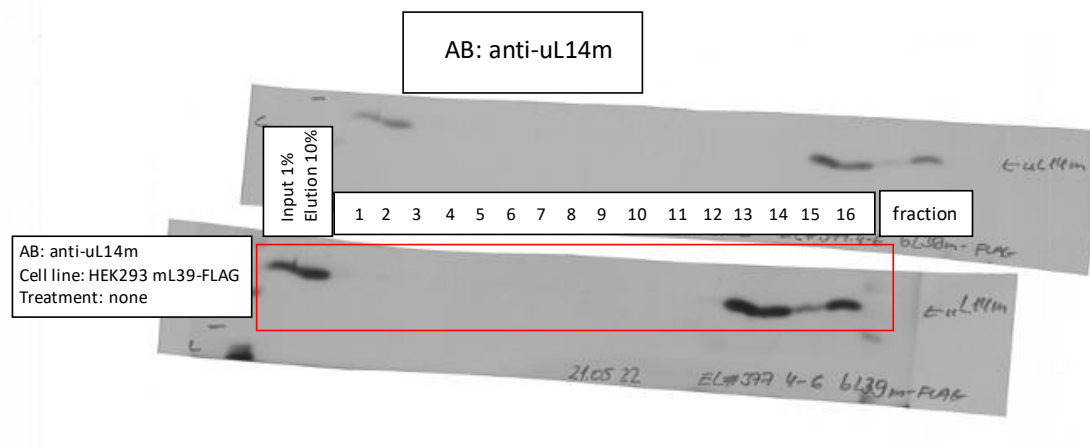
EL#377.4-6 mL39-FLAG IP + Gradient

Rotor: SW41 Ti

Gradient: Sucrose 5-30%

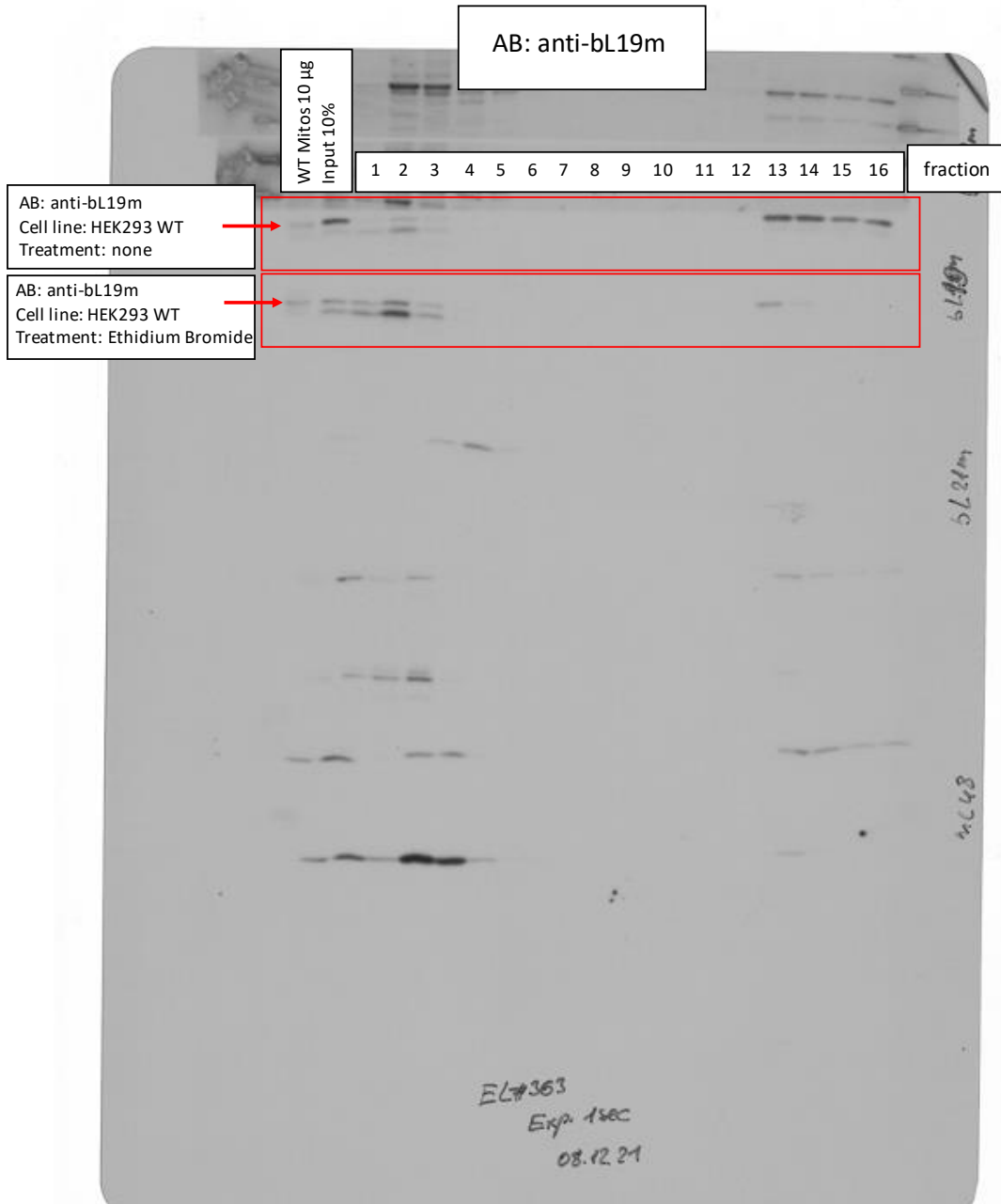
Speed: 158.000xg

Time: 15h



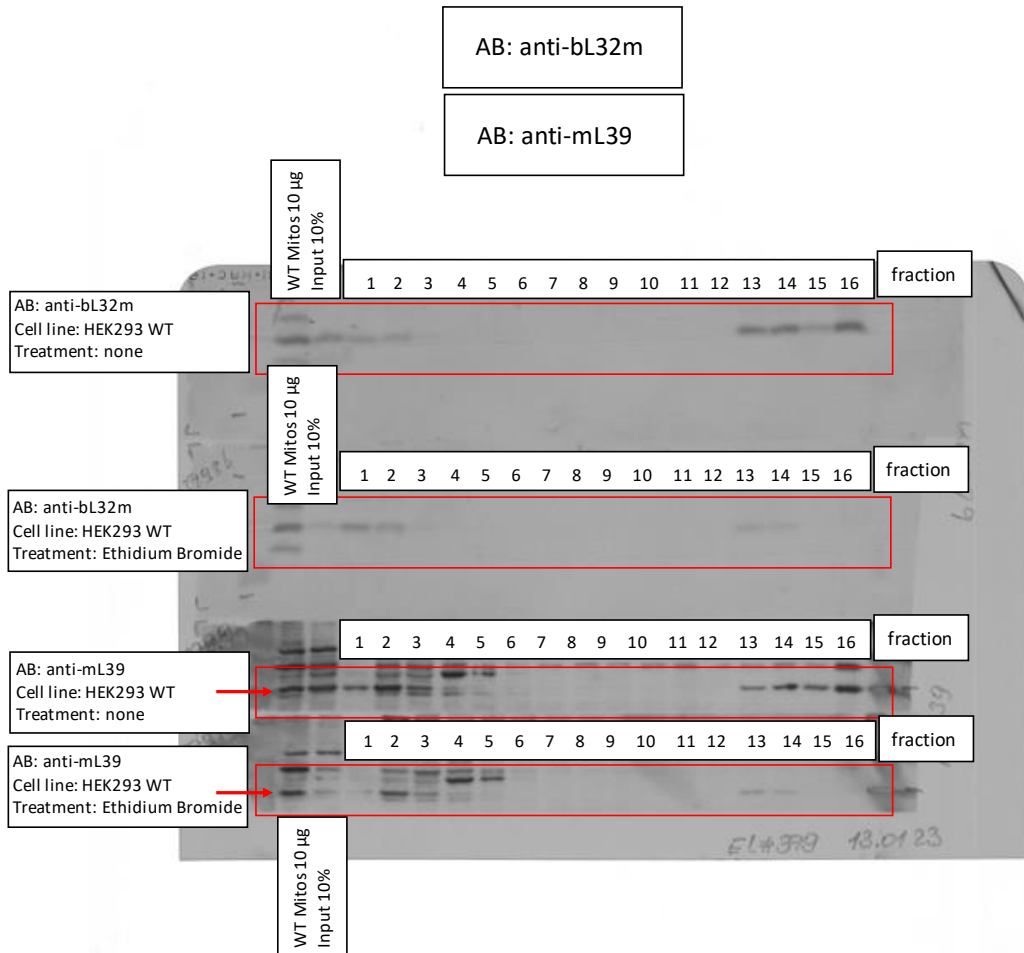
Source Data 6_related to Extended Data Fig.10b
EL#363 HEK293 WT + Ethidium Bromide treatment + Gradient
EL#379 HEK293 WT + Ethidium Bromide treatment + Gradient

Rotor: SW41 Ti
Gradient: Sucrose 5-30%
Speed: 158.000xg
Time: 15h



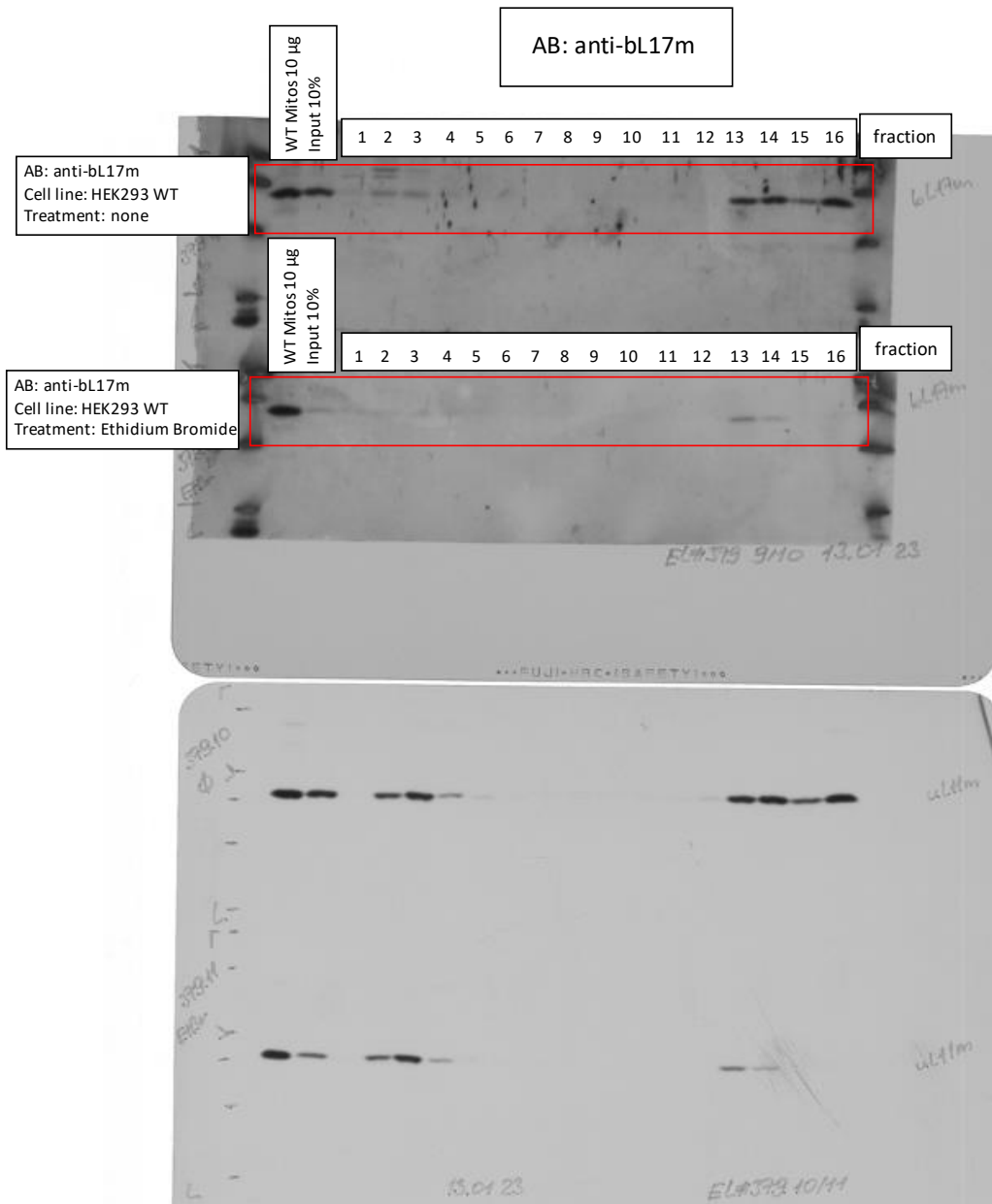
Source Data 6_related to Extended Data Fig.10b
EL#363 HEK293 WT + Ethidium Bromide treatment + Gradient
EL#379 HEK293 WT + Ethidium Bromide treatment + Gradient

Rotor: SW41 Ti
Gradient: Sucrose 5-30%
Speed: 158.000xg
Time: 15h



Source Data 6_related to Extended Data Fig.10b
EL#363 HEK293 WT + Ethidium Bromide treatment + Gradient
EL#379 HEK293 WT + Ethidium Bromide treatment + Gradient

Rotor: SW41 Ti
Gradient: Sucrose 5-30%
Speed: 158.000xg
Time: 15h



Source Data 6_related to Extended Data Fig.10c

EL#420 mL45 KO + Gradient

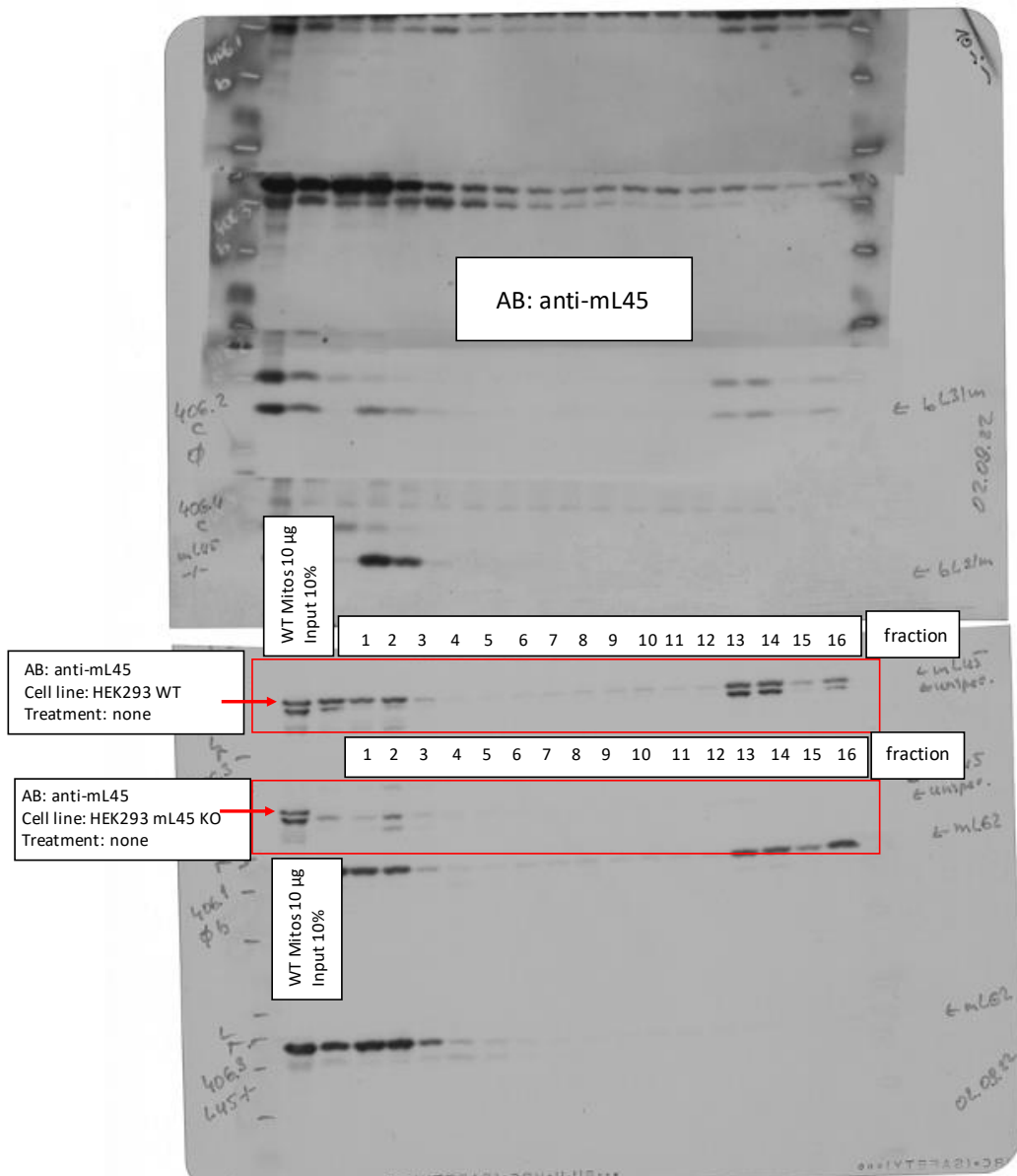
EL#406 mL45 KO + Gradient

Rotor: SW41 Ti

Gradient: Sucrose 5-30%

Speed: 158.000xg

Time: 15h



Source Data 6_related to Extended Data Fig.10c

EL#420 mL45 KO + Gradient

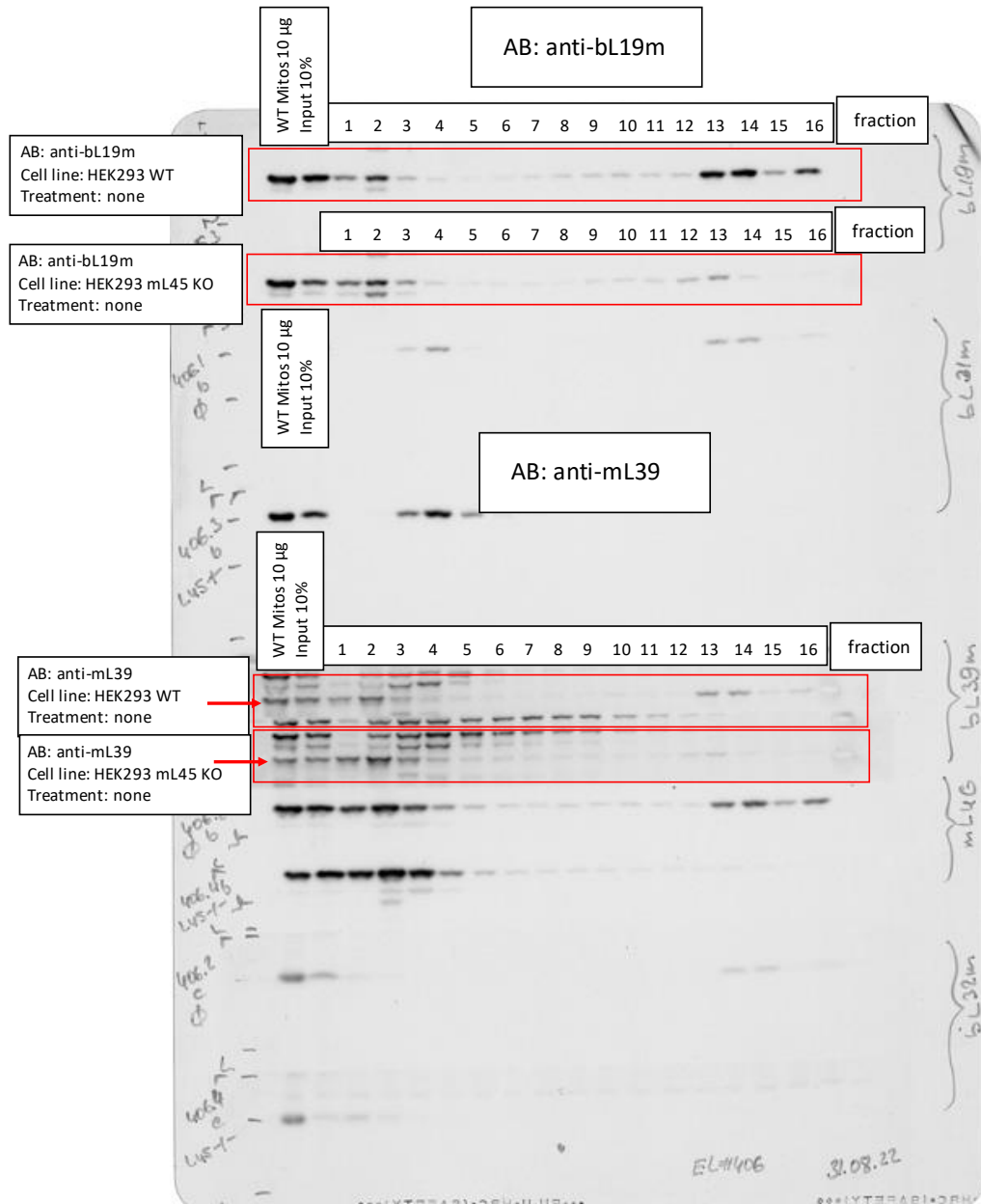
EL#406 mL45 KO + Gradient

Rotor: SW41 Ti

Gradient: Sucrose 5-30%

Speed: 158.000xg

Time: 15h



Source Data 6_related to Extended Data Fig.10c

EL#420 mL45 KO + Gradient

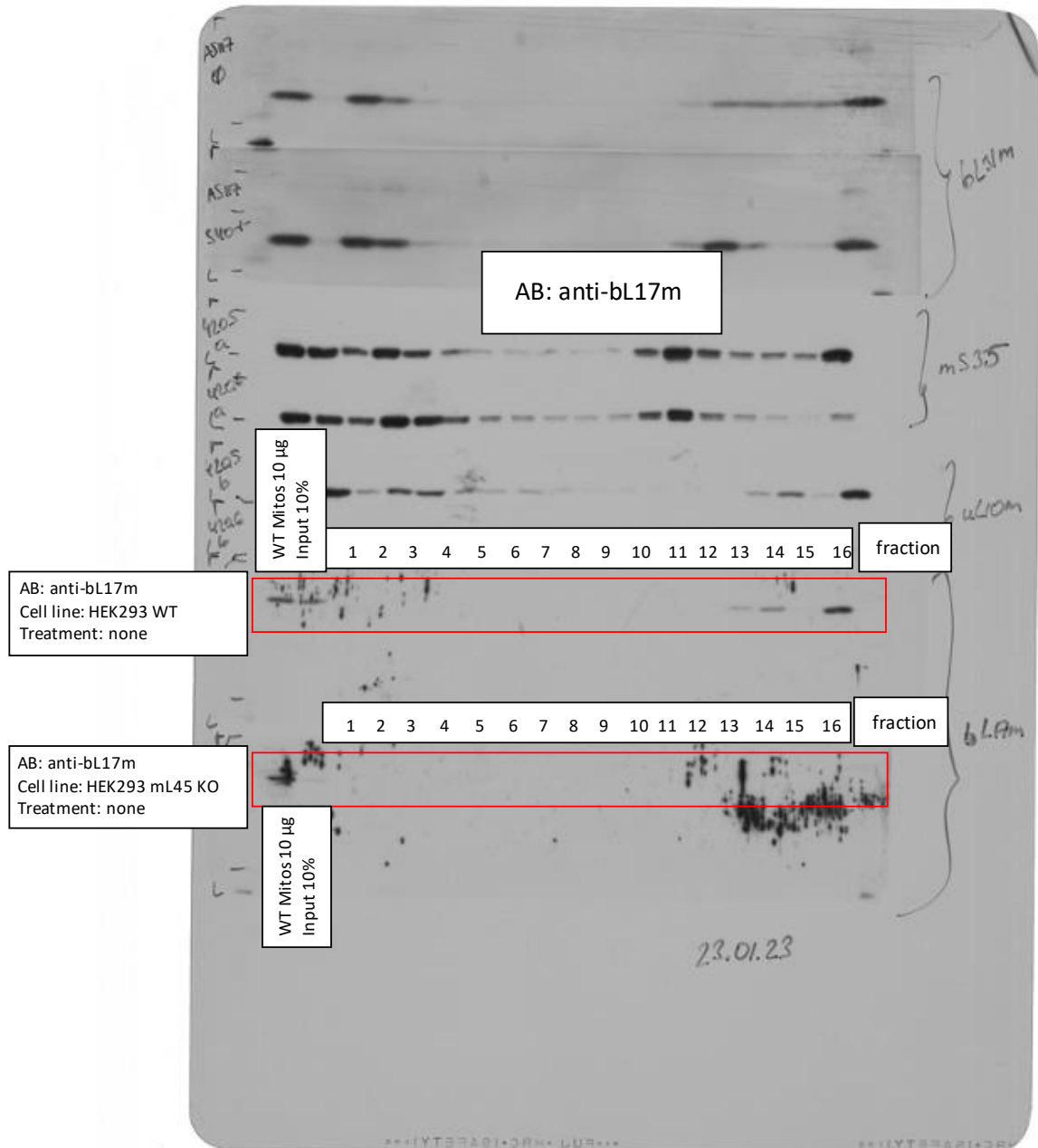
EL#406 mL45 KO + Gradient

Rotor: SW41 Ti

Gradient: Sucrose 5-30%

Speed: 158.000xg

Time: 15h



Source Data 6_related to Extended Data Fig.10c

EL#420 mL45 KO + Gradient

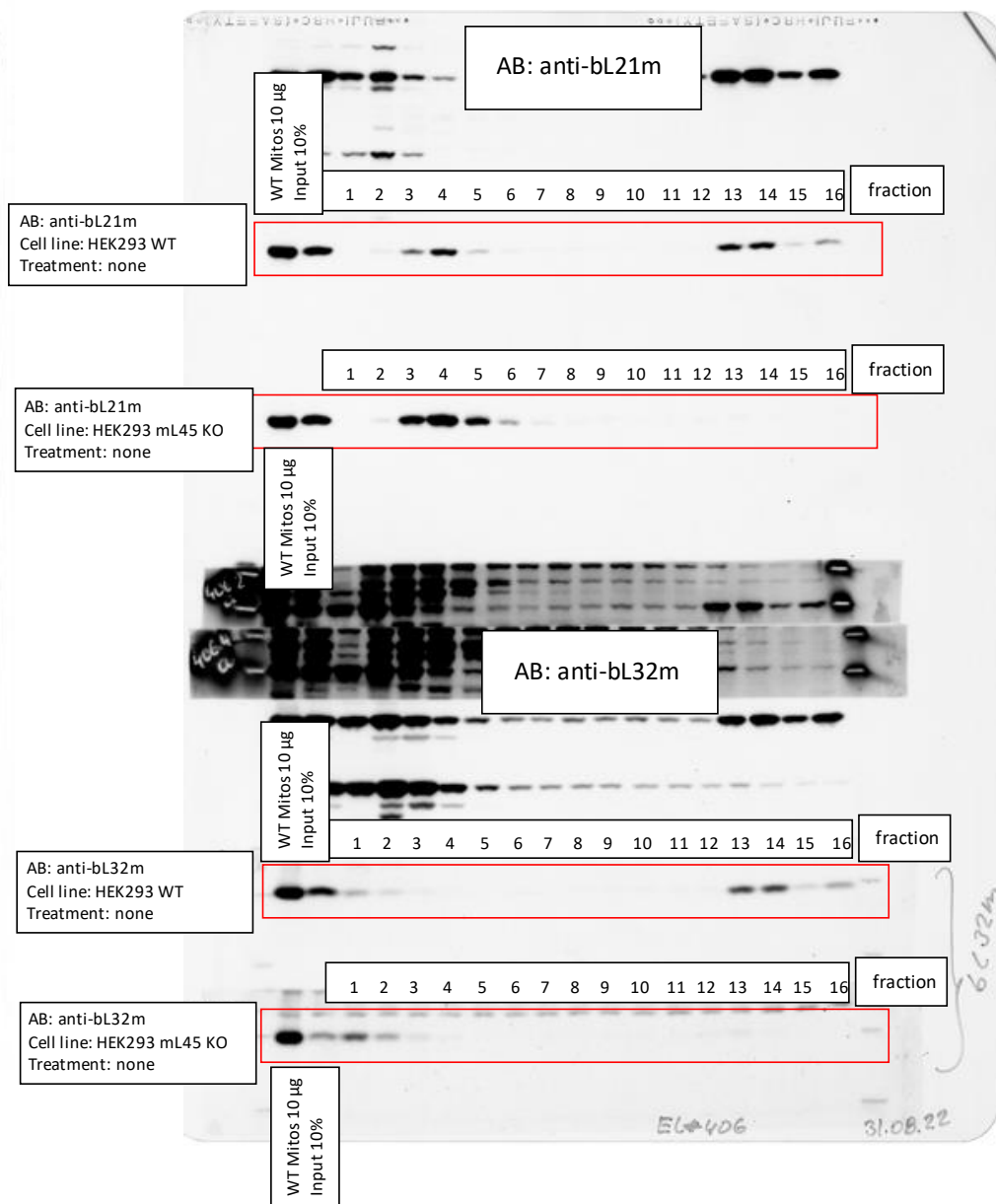
EL#406 mL45 KO + Gradient

Rotor: SW41 Ti

Gradient: Sucrose 5-30%

Speed: 158.000xg

Time: 15h



Source Data 6_related to Extended Data Fig.10c

EL#420 mL45 KO + Gradient

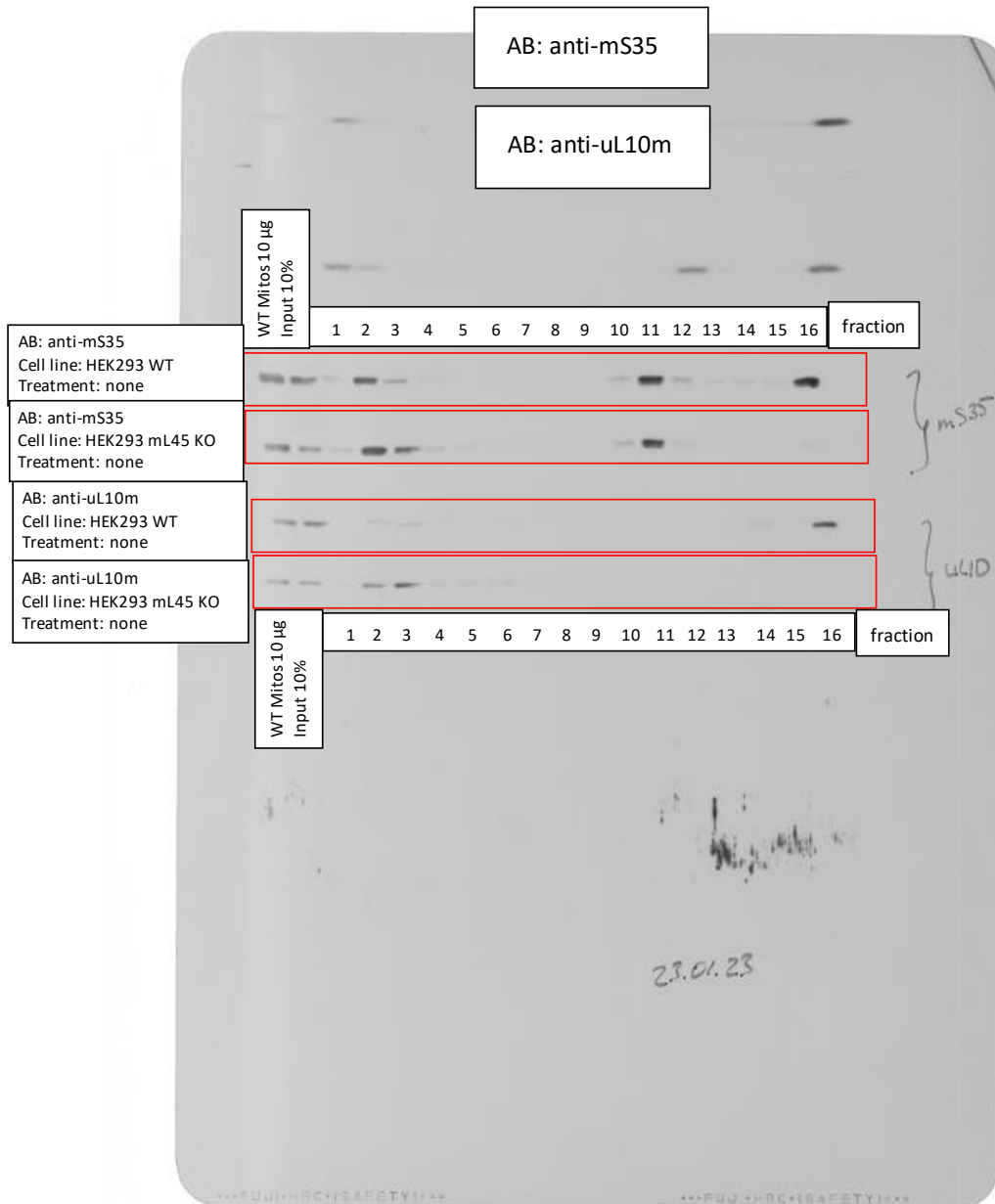
EL#406 mL45 KO + Gradient

Rotor: SW41 Ti

Gradient: Sucrose 5-30%

Speed: 158.000xg

Time: 15h



Source Data 6_related to Extended Data Fig.10c

EL#420 mL45 KO + Gradient

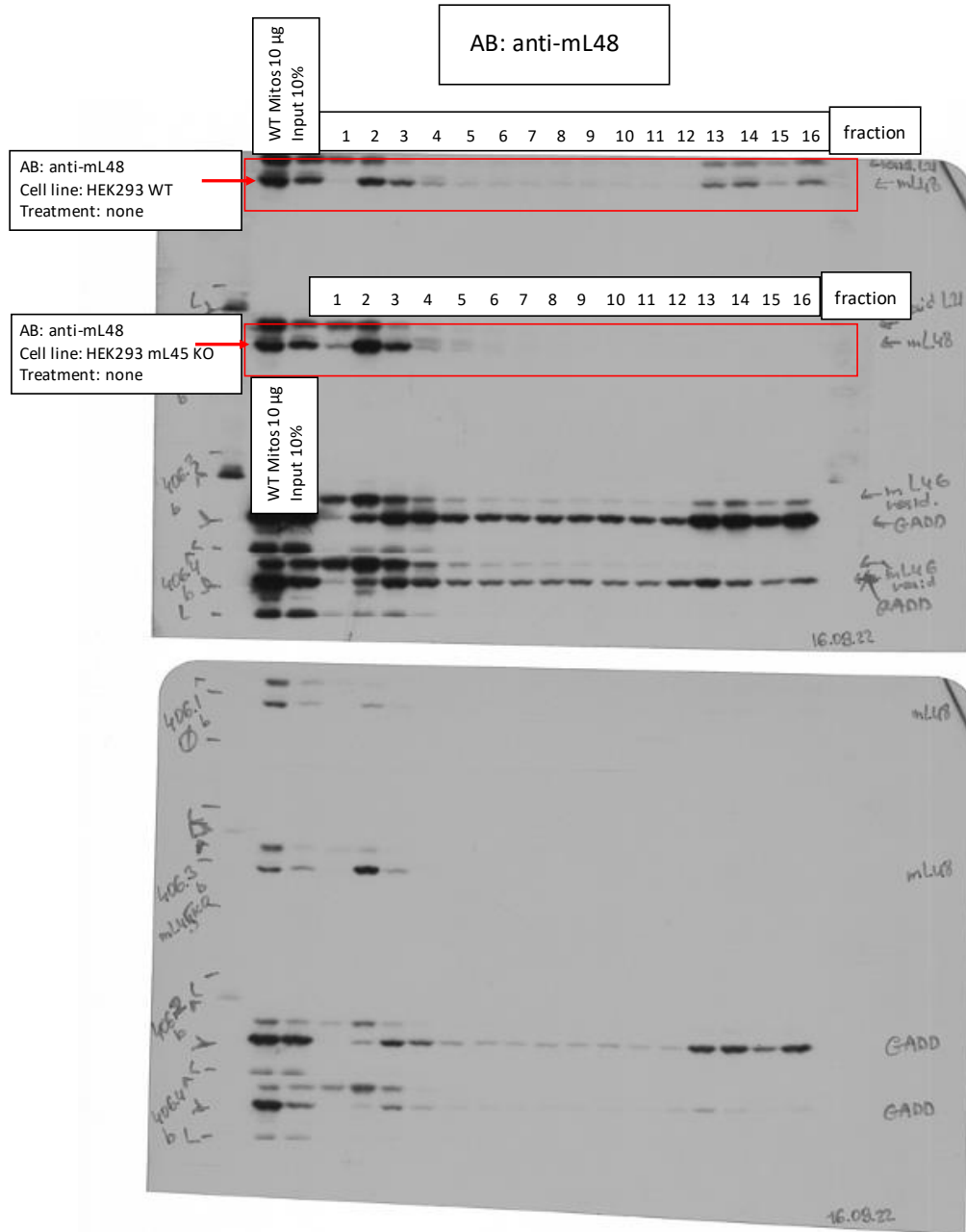
EL#406 mL45 KO + Gradient

Rotor: SW41 Ti

Gradient: Sucrose 5-30%

Speed: 158.000xg

Time: 15h



Source Data 6_related to Extended Data Fig.10c

EL#420 mL45 KO + Gradient

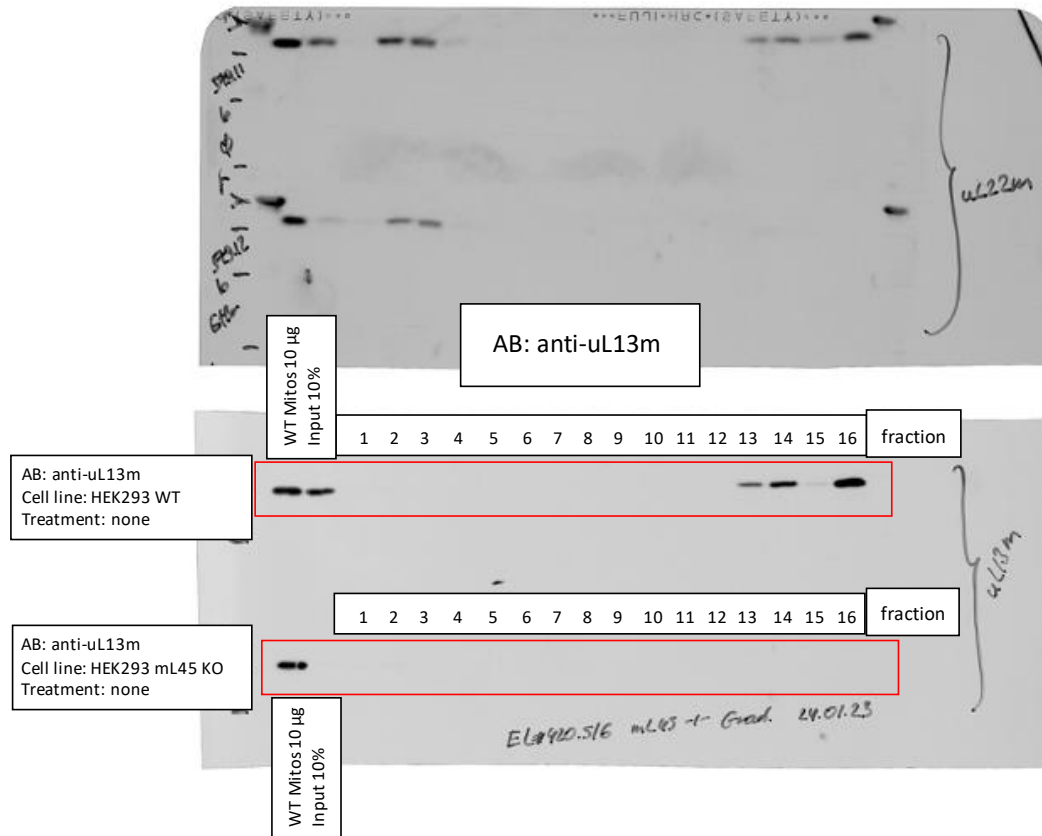
EL#406 mL45 KO + Gradient

Rotor: SW41 Ti

Gradient: Sucrose 5-30%

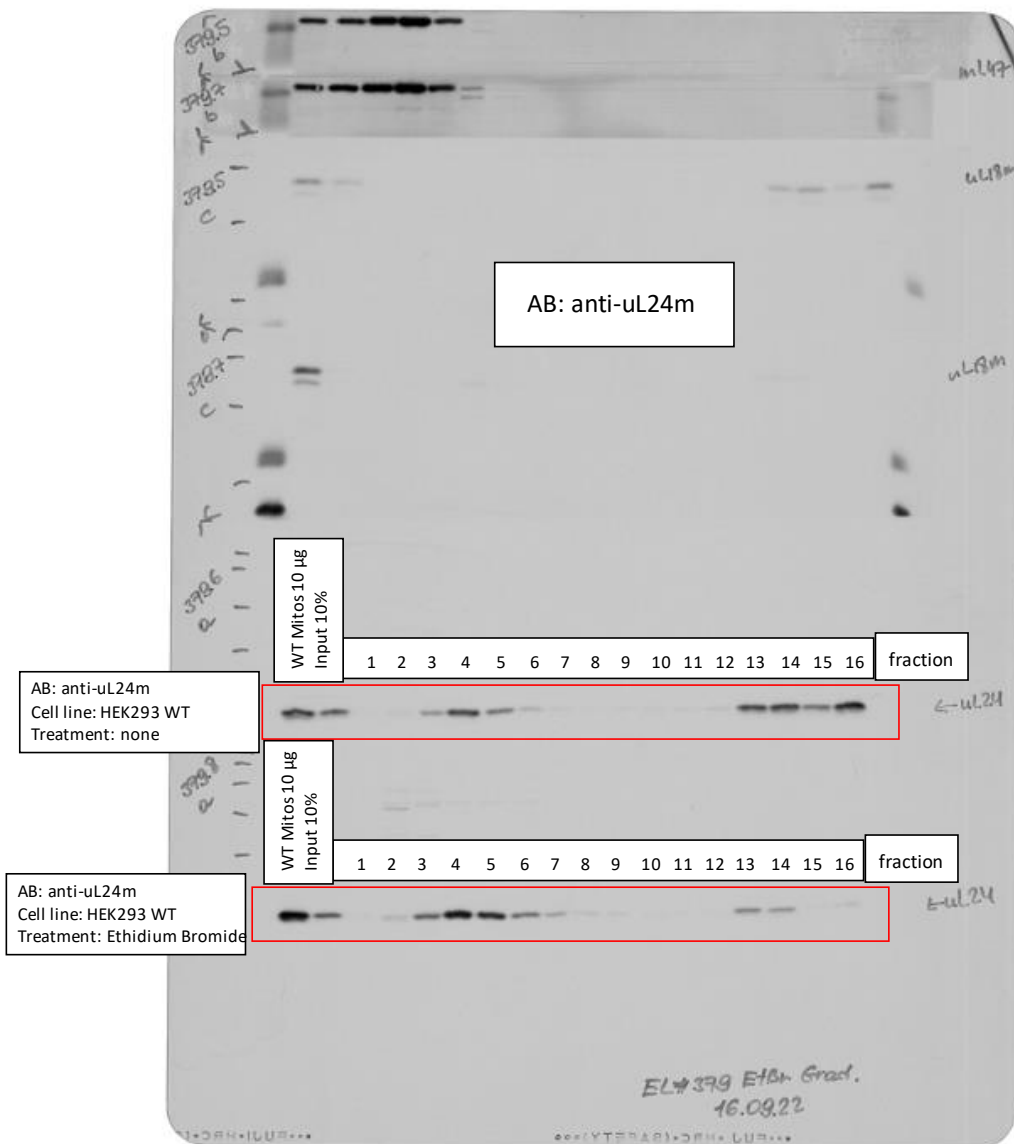
Speed: 158.000xg

Time: 15h



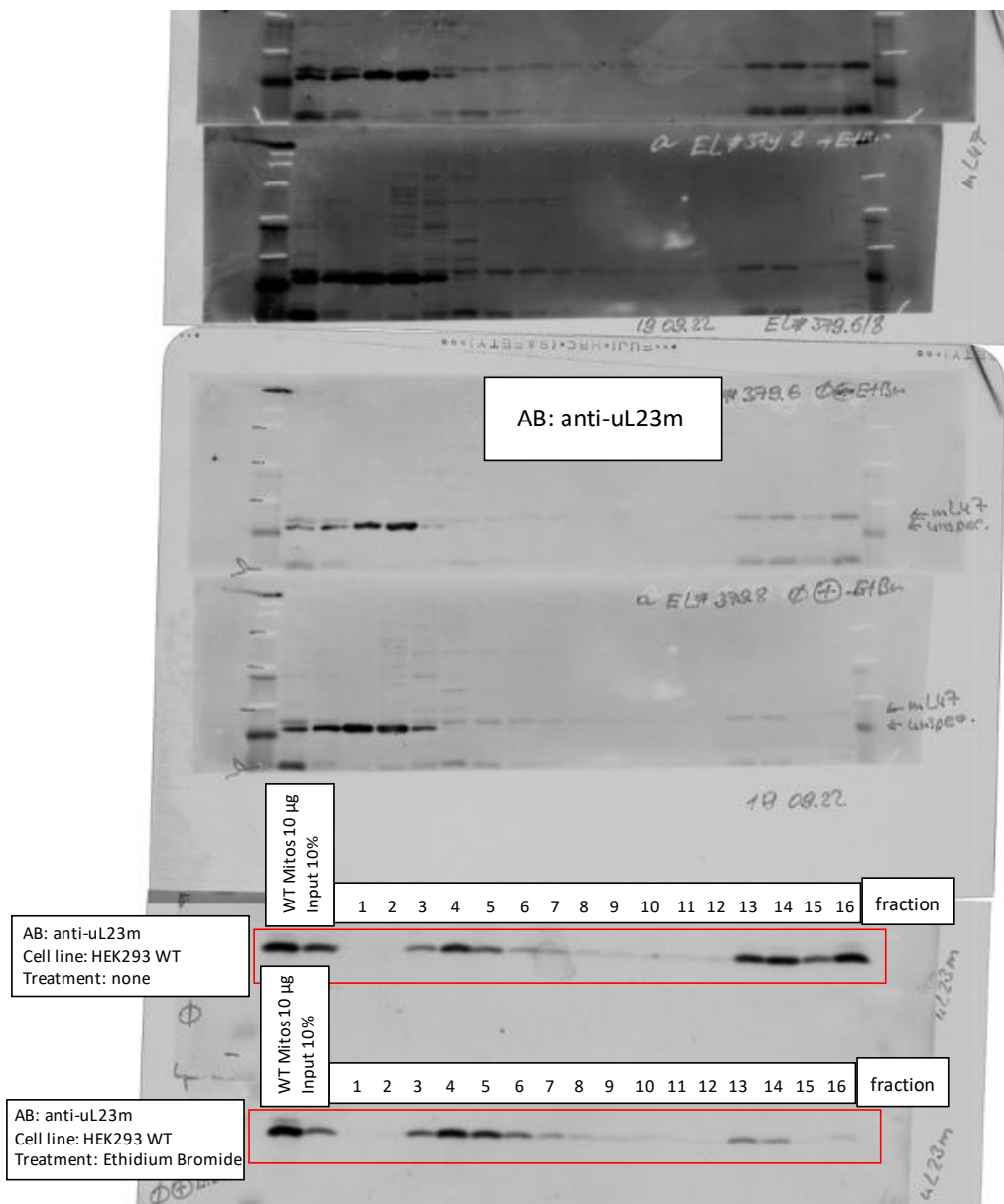
Source Data 6_related to Extended Data Fig.10d
EL#363 HEK293 WT + Ethidium Bromide treatment + Gradient
EL#379 HEK293 WT + Ethidium Bromide treatment + Gradient

Rotor: SW41 Ti
Gradient: Sucrose 5-30%
Speed: 158.000xg
Time: 15h



Source Data 6_related to Extended Data Fig.10d
 EL#363 HEK293 WT + Ethidium Bromide treatment + Gradient
 EL#379 HEK293 WT + Ethidium Bromide treatment + Gradient

Rotor: SW41 Ti
 Gradient: Sucrose 5-30%
 Speed: 158.000xg
 Time: 15h



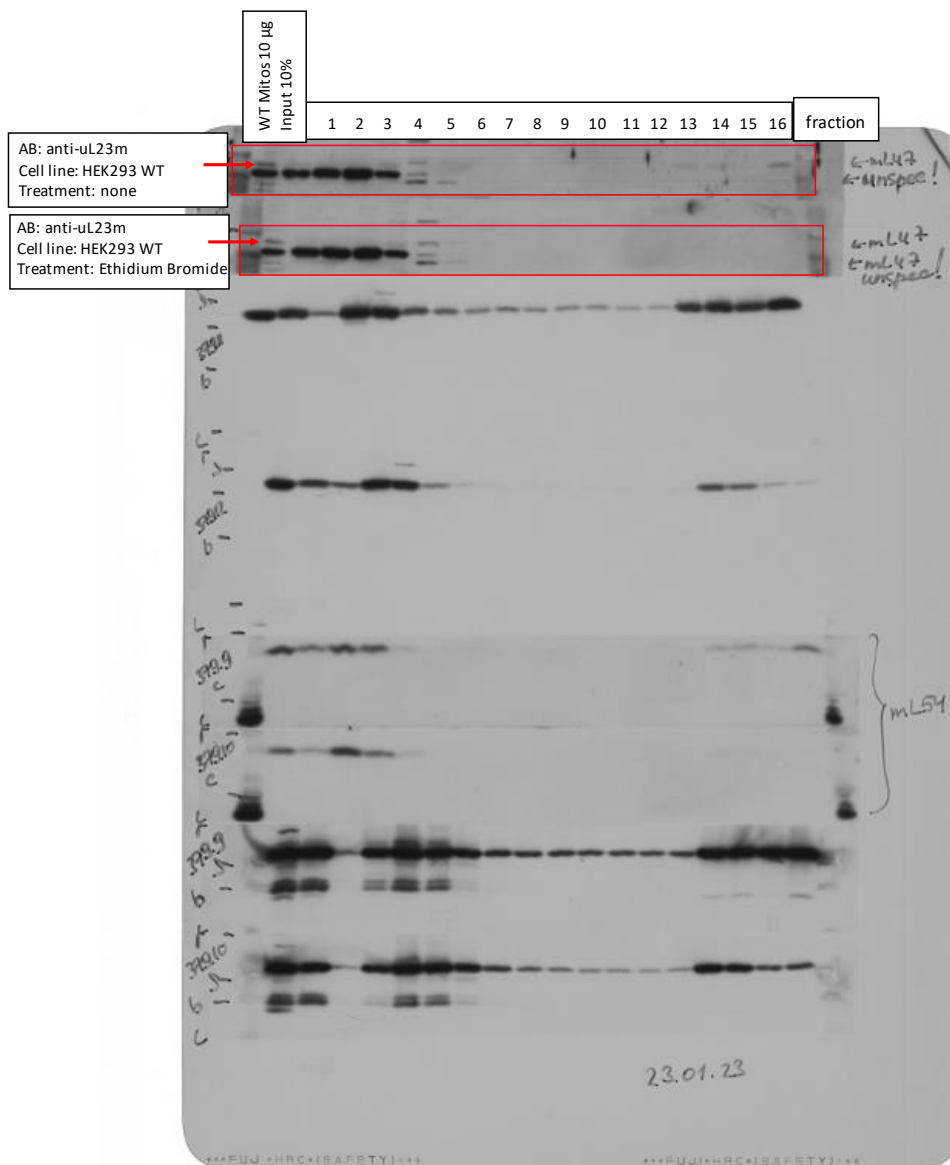
Source Data 6_related to Extended Data Fig.10d
EL#363 HEK293 WT + Ethidium Bromide treatment + Gradient
EL#379 HEK293 WT + Ethidium Bromide treatment + Gradient

Rotor: SW41 Ti

Gradient: Sucrose 5-30%

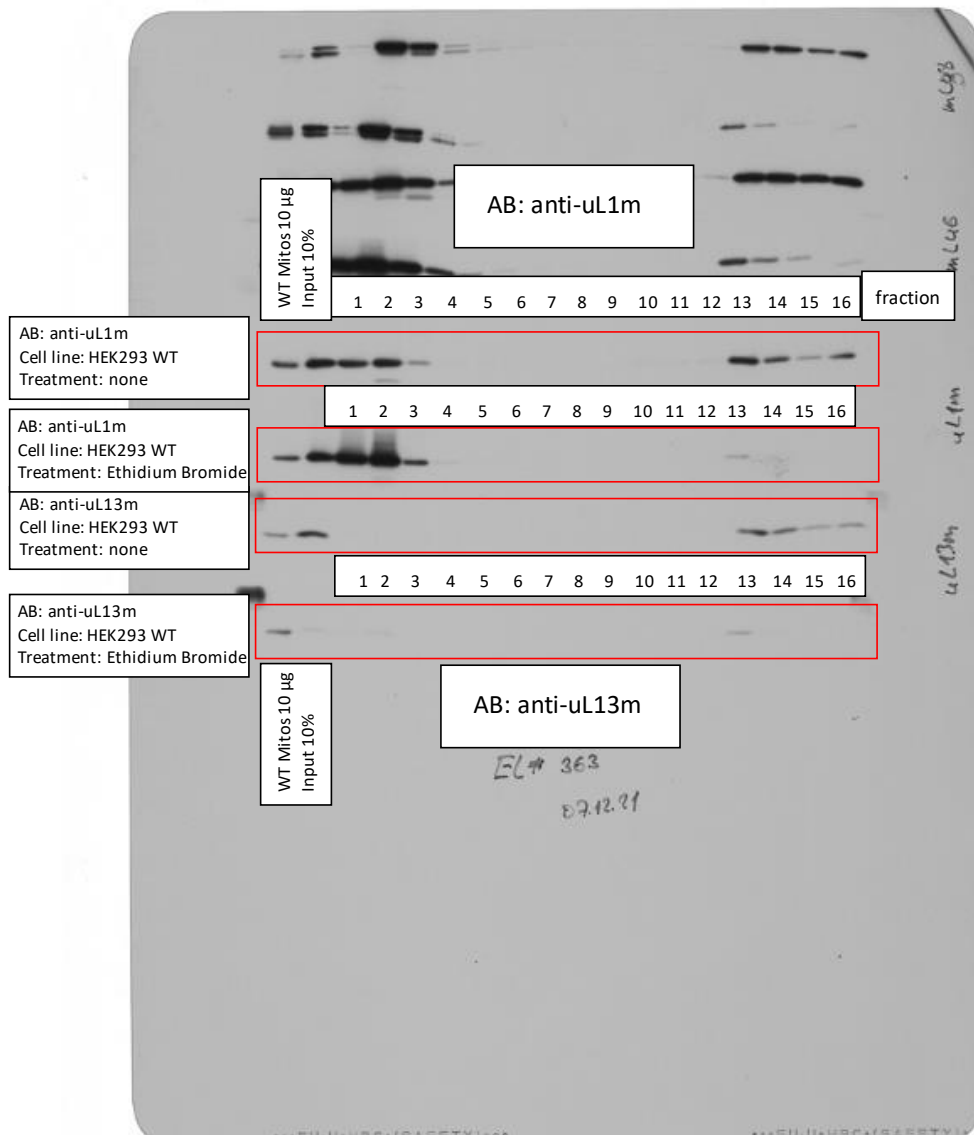
Speed: 158.000xg

Time: 15h



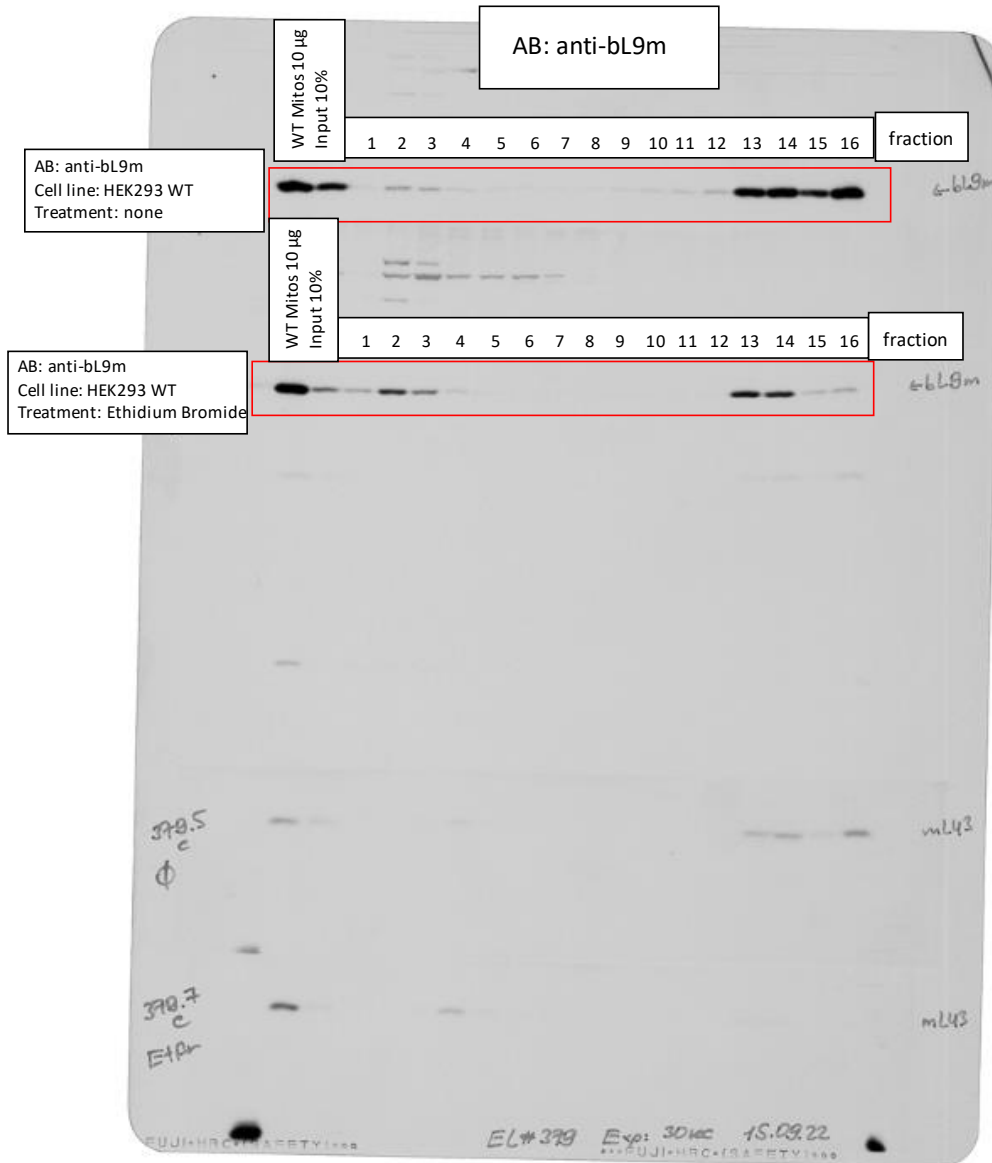
Source Data 6_related to Extended Data Fig.10e
EL#363 HEK293 WT + Ethidium Bromide treatment + Gradient
EL#379 HEK293 WT + Ethidium Bromide treatment + Gradient

Rotor: SW41 Ti
Gradient: Sucrose 5-30%
Speed: 158.000xg
Time: 15h



Source Data 6_related to Extended Data Fig.10e
EL#363 HEK293 WT + Ethidium Bromide treatment + Gradient
EL#379 HEK293 WT + Ethidium Bromide treatment + Gradient

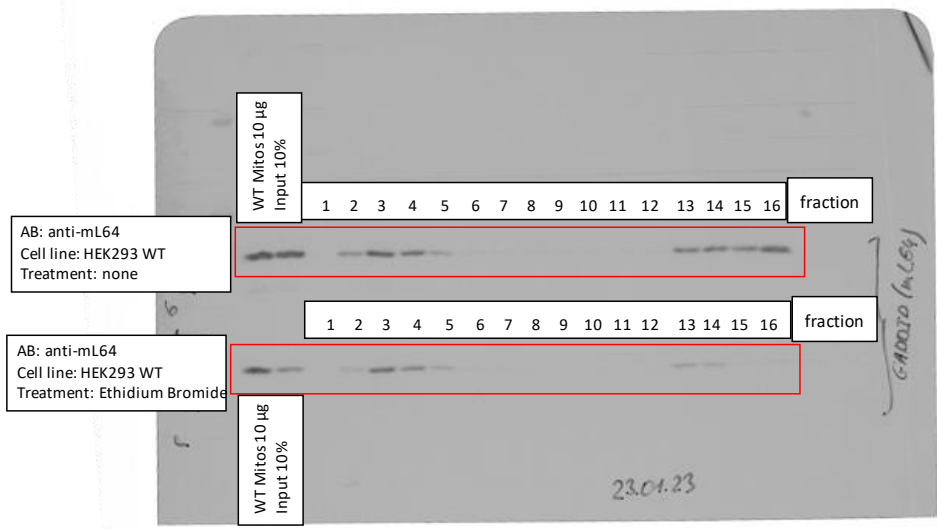
Rotor: SW41 Ti
Gradient: Sucrose 5-30%
Speed: 158.000xg
Time: 15h



Source Data 6_related to Extended Data Fig.10e
EL#363 HEK293 WT + Ethidium Bromide treatment + Gradient
EL#379 HEK293 WT + Ethidium Bromide treatment + Gradient

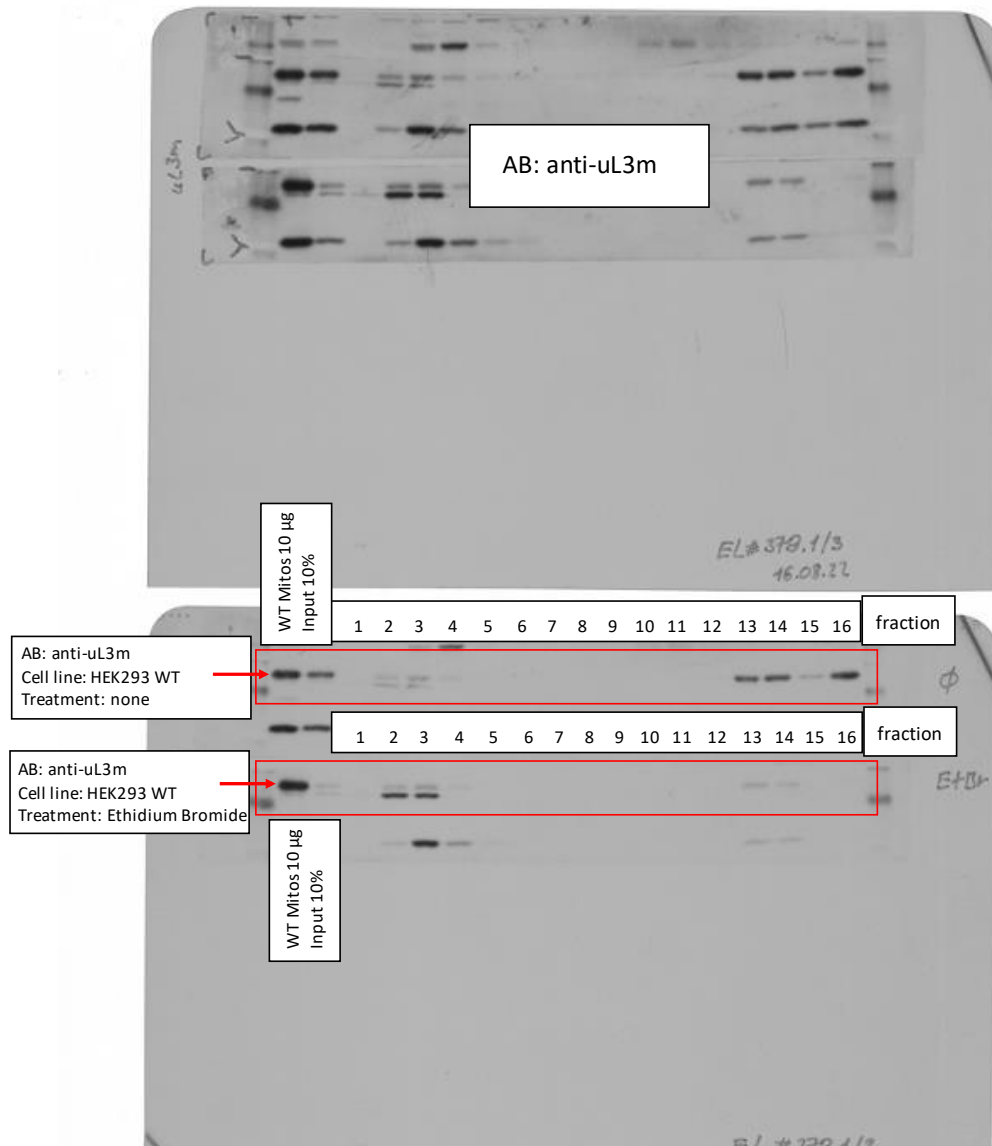
Rotor: SW41 Ti
Gradient: Sucrose 5-30%
Speed: 158.000xg
Time: 15h

AB: anti-mL64



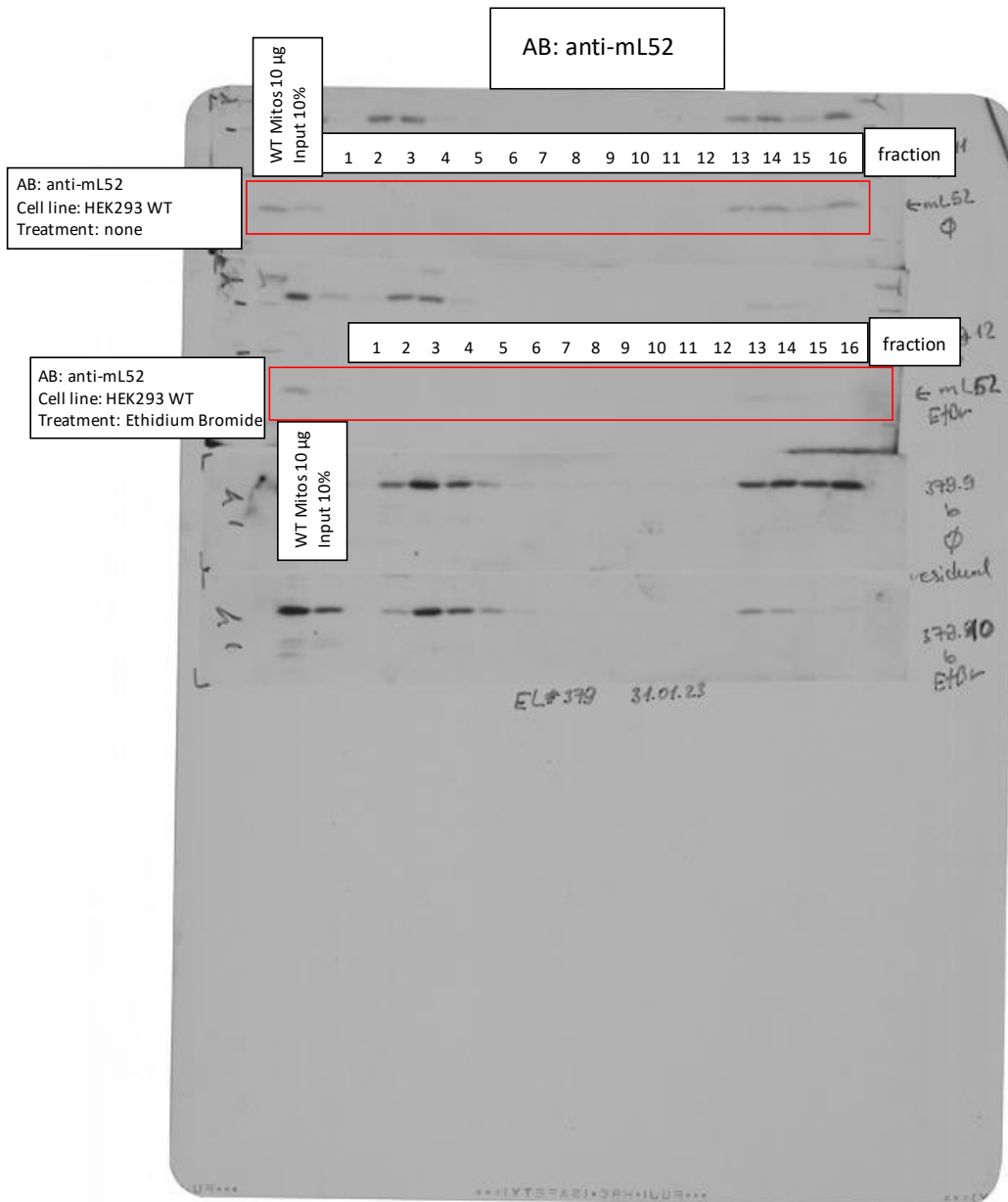
Source Data 6_related to Extended Data Fig.10e
EL#363 HEK293 WT + Ethidium Bromide treatment + Gradient
EL#379 HEK293 WT + Ethidium Bromide treatment + Gradient

Rotor: SW41 Ti
Gradient: Sucrose 5-30%
Speed: 158.000xg
Time: 15h



Source Data 6_related to Extended Data Fig.10e
EL#363 HEK293 WT + Ethidium Bromide treatment + Gradient
EL#379 HEK293 WT + Ethidium Bromide treatment + Gradient

Rotor: SW41 Ti
Gradient: Sucrose 5-30%
Speed: 158.000xg
Time: 15h



Source Data 6_related to Extended Data Fig.10e
EL#363 HEK293 WT + Ethidium Bromide treatment + Gradient
EL#379 HEK293 WT + Ethidium Bromide treatment + Gradient

Rotor: SW41 Ti
Gradient: Sucrose 5-30%
Speed: 158.000xg
Time: 15h

