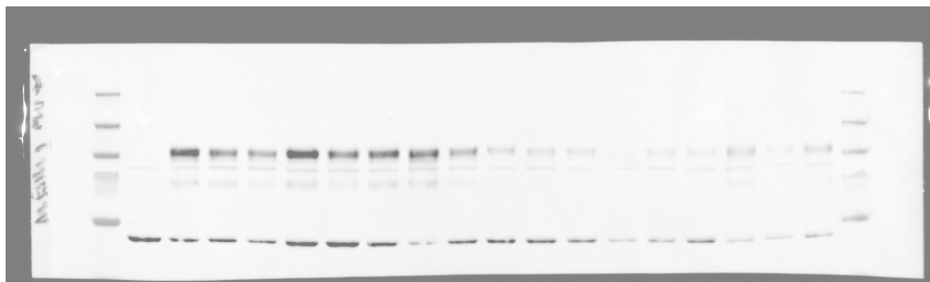
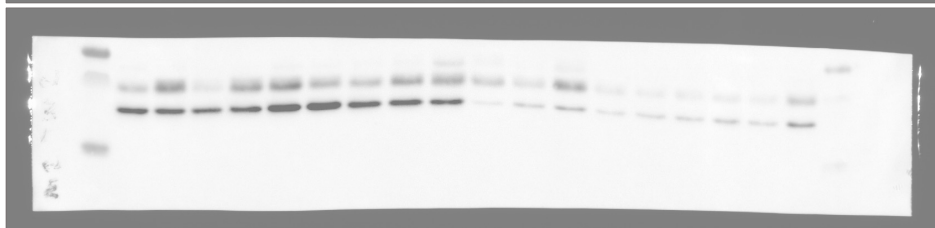


Figure 2. A. Uncropped Western Blots.



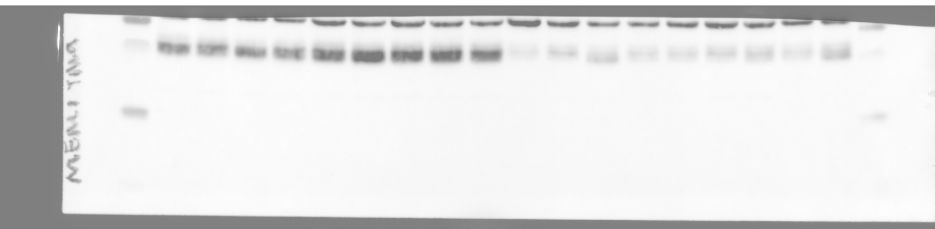
C125R - UMOD



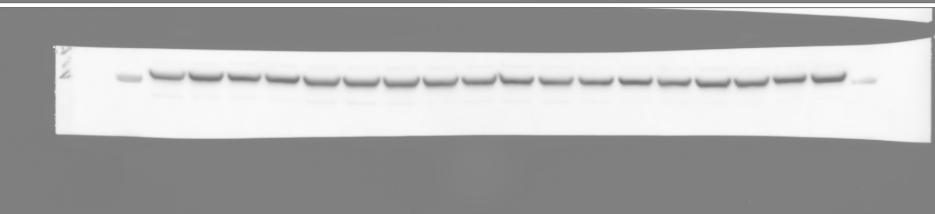
TMED2



TMED10



TMED9



α/β -tubulin

Figure 2. A. For the final quantification, we ran more mice with an additional loading control: Vinculin

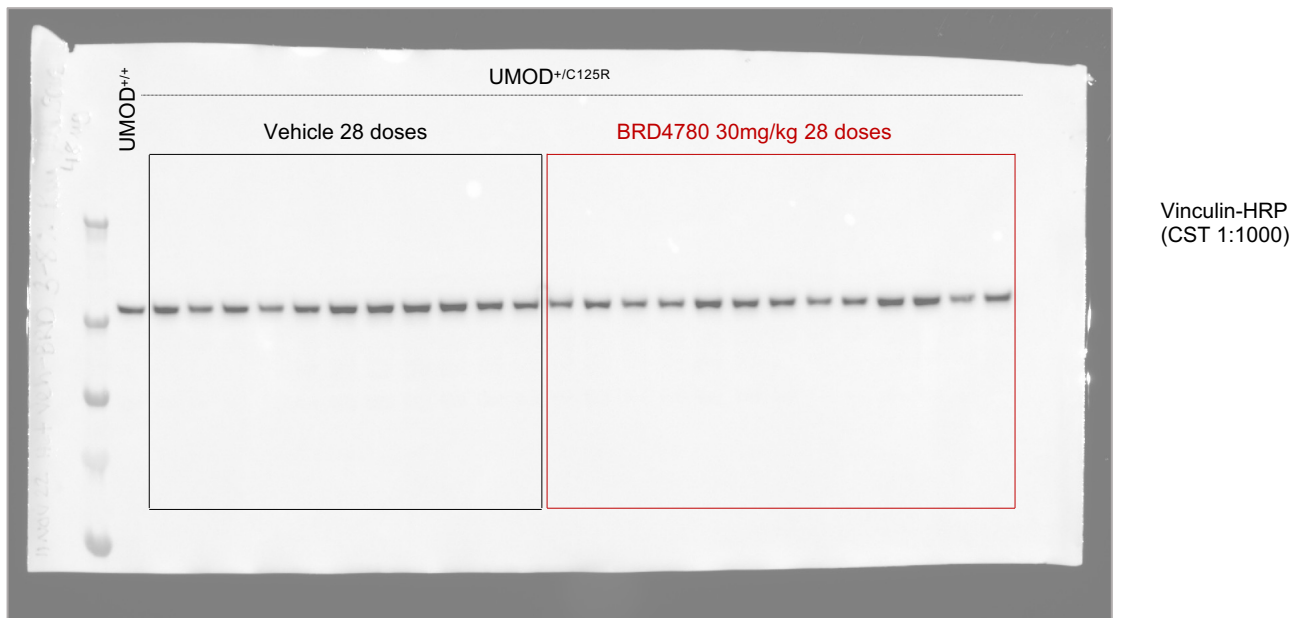
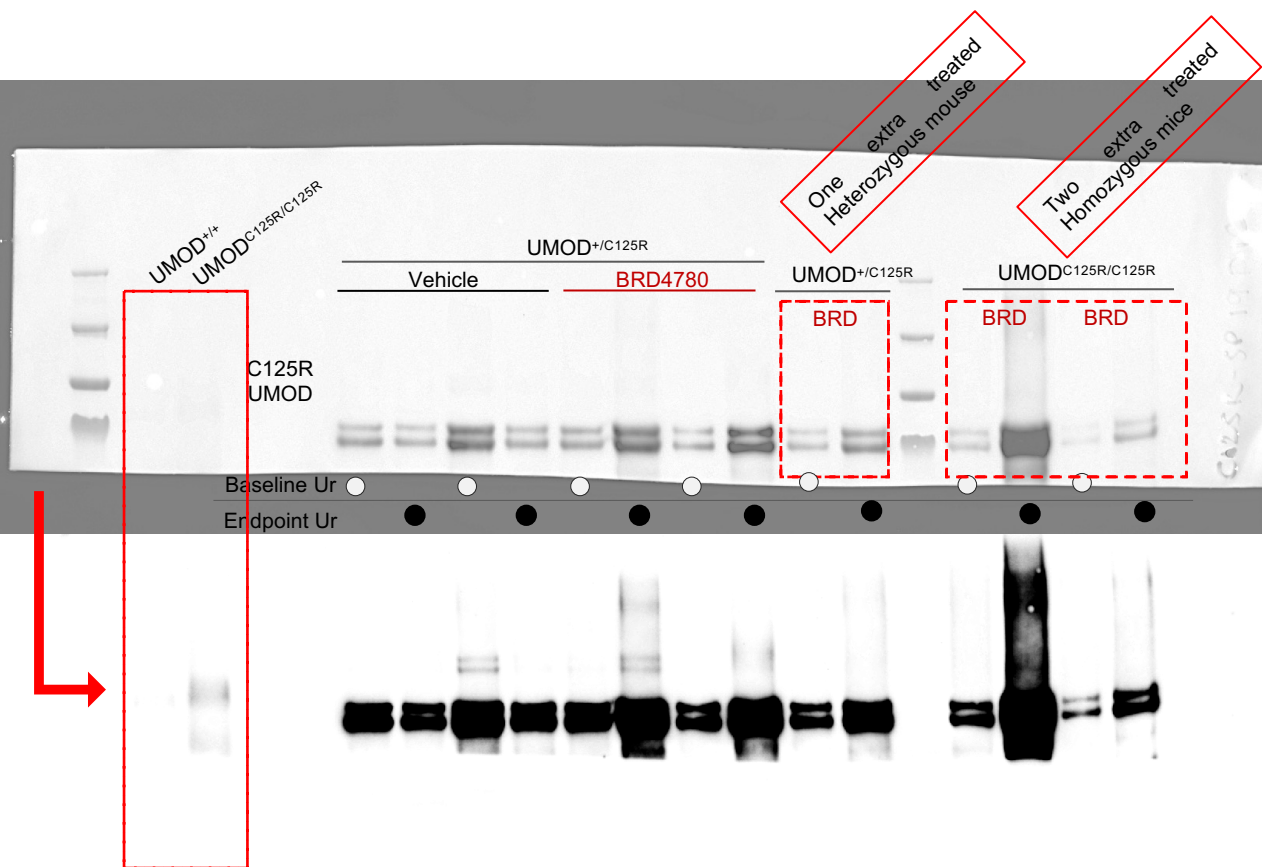


Figure 3. C. Uncropped Western Blots. Highlighted in red boxes are the explanations for the extra lanes, not shown in the cropped version.



To be able to see the left part of the blot (where we ran the whole-kidney lysates) we had to use a different exposure to what is shown in the upper panel.

Figure 5. B. Uncropped Western Blots.

This is the area that is shown in the figure, for simplicity of the representative Western Blot, the other lanes are not shown.

