

Supplementary Material

1 SUPPLEMENTARY TABLES AND FIGURES

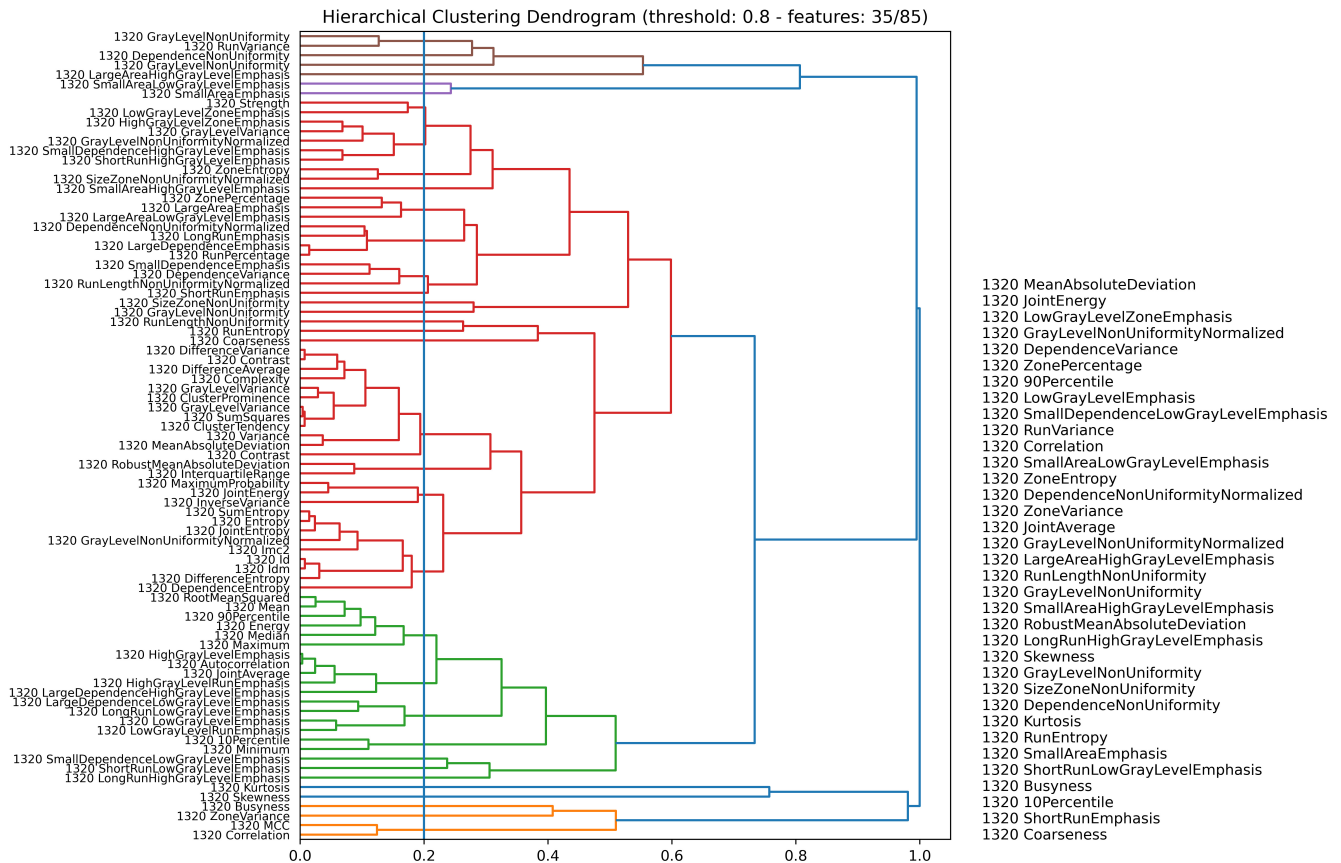


Figure S1. Illustration of the clustering-based redundancy elimination. Hierarchical clustering is performed with the distance $1 - \text{Kendall's tau}$ over the dosiomics extracted from the whole heart, with a threshold of 0.8. We select the best feature among each cluster by performing a multivariate Cox adjusted on the cluster's features. The selected features are shown on the right side. In this procedure, 35 features were kept over 85.

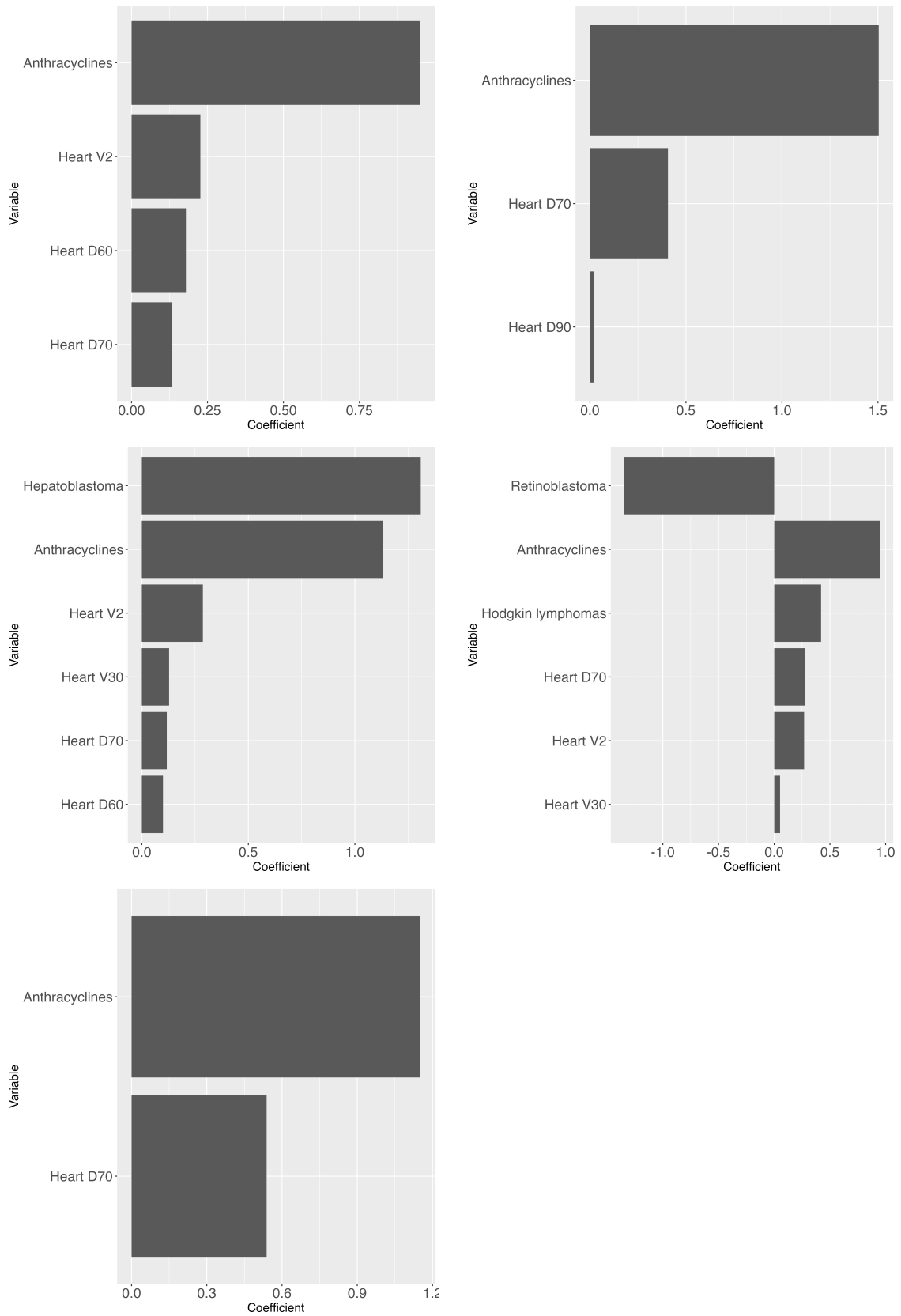


Figure S2. Model: Cox Lasso adjusted on the dose-volume indicators. Coefficients of the variables selected by the Lasso for each fold of the 5-fold cross-validation.

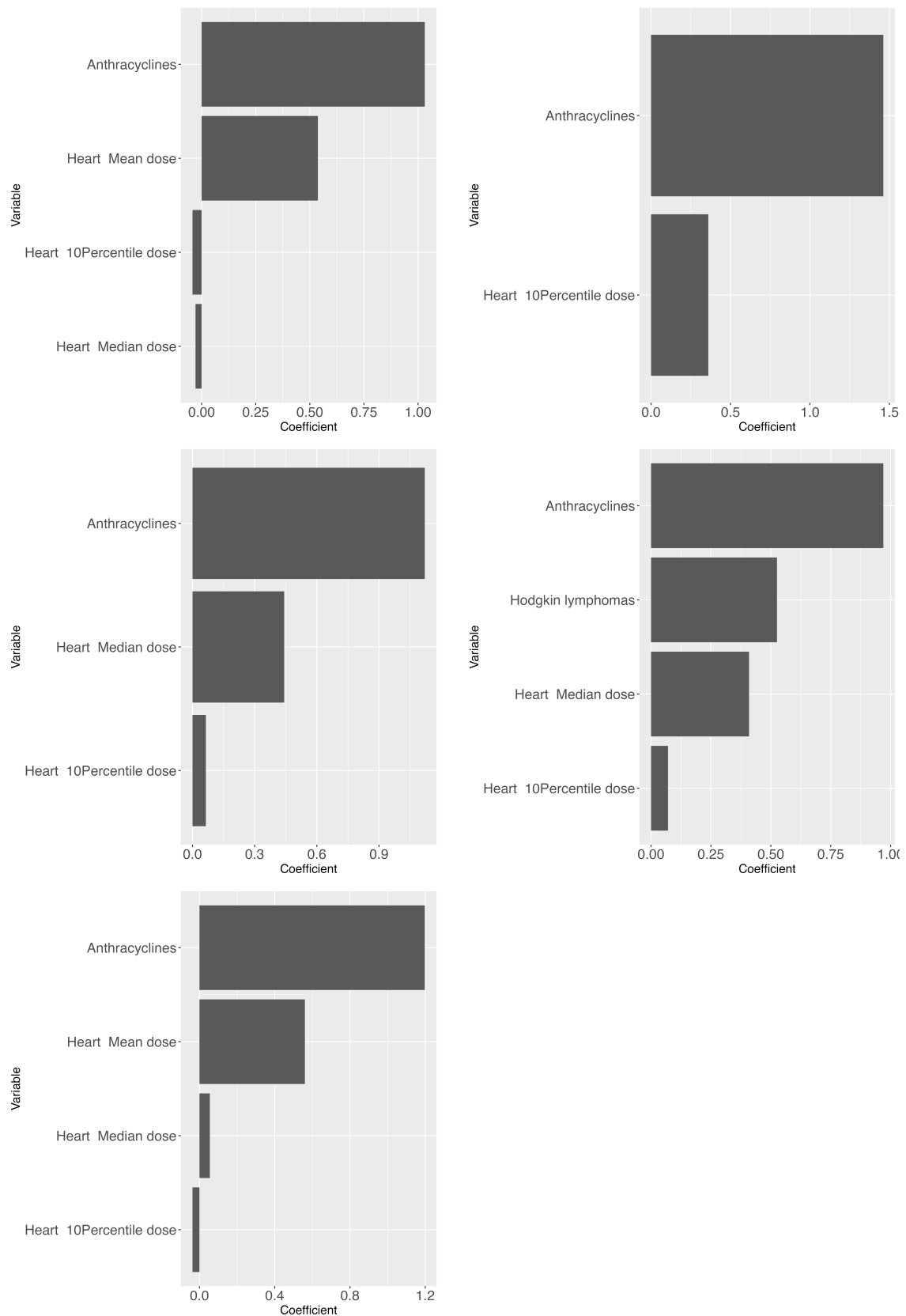


Figure S3. Model: Cox Lasso adjusted on the first-order dosiomics. Coefficients of the variables selected by the Lasso for each fold of the 5-fold cross-validation.