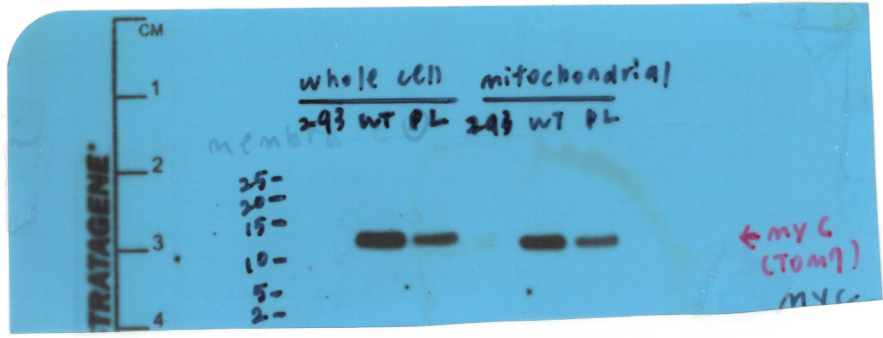
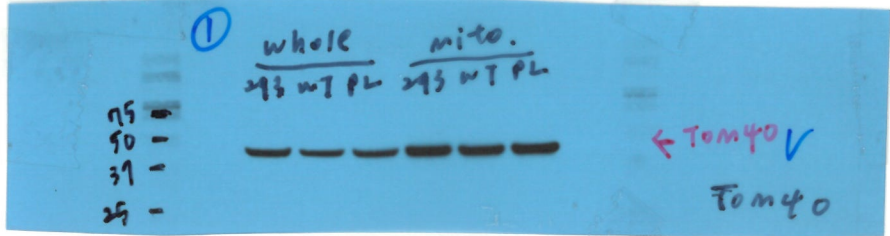


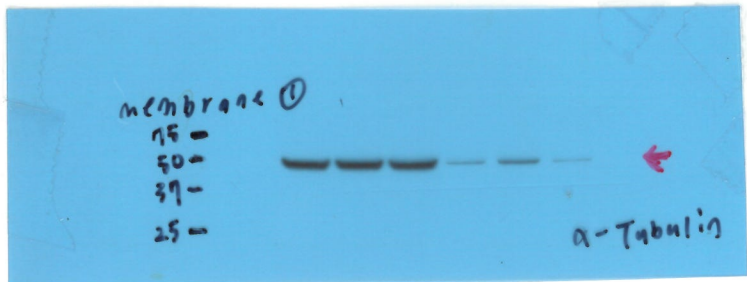
Figure 2C.



Ab: Anti-MYC (Thermo)



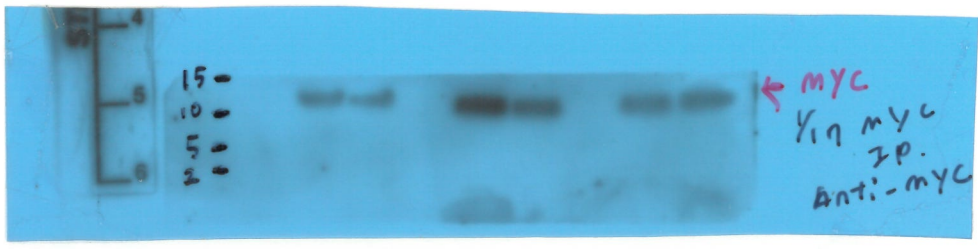
Ab: Anti-Tom40 (ProteinTech)



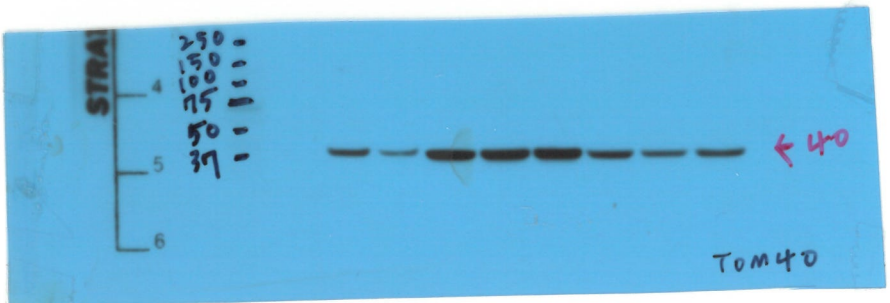
Ab: Anti-alpha-Tubulin (ProteinTech)

Figure 2F.

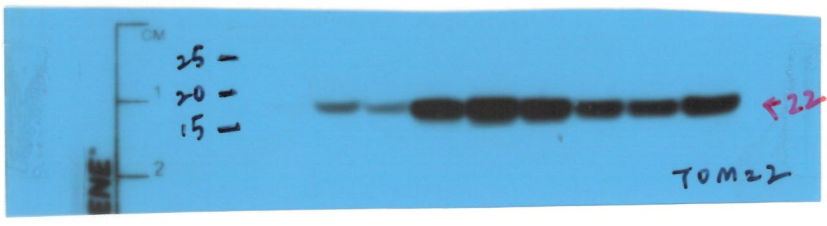
IP: myc
post-IP pre-IP total lysate
293 WT PL 293 WT PL 293 WT PL



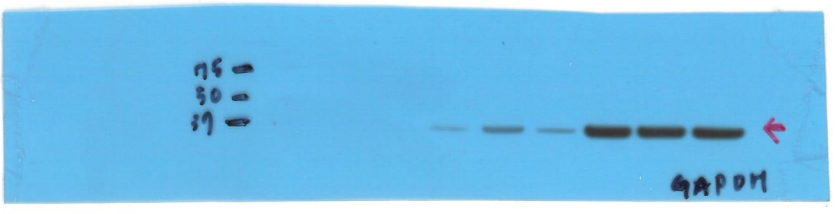
Ab: Anti-myc (Thermo)



Ab: Anti-TOM40 (ProteinTech)

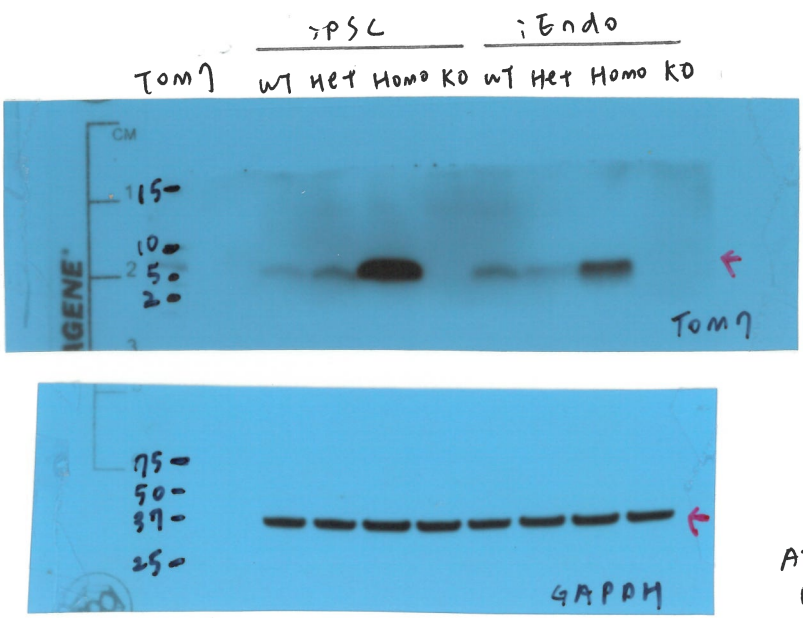


Ab: Anti-TOM22 (Thermo)



Ab: Anti-GAPDH (Santa Cruz)

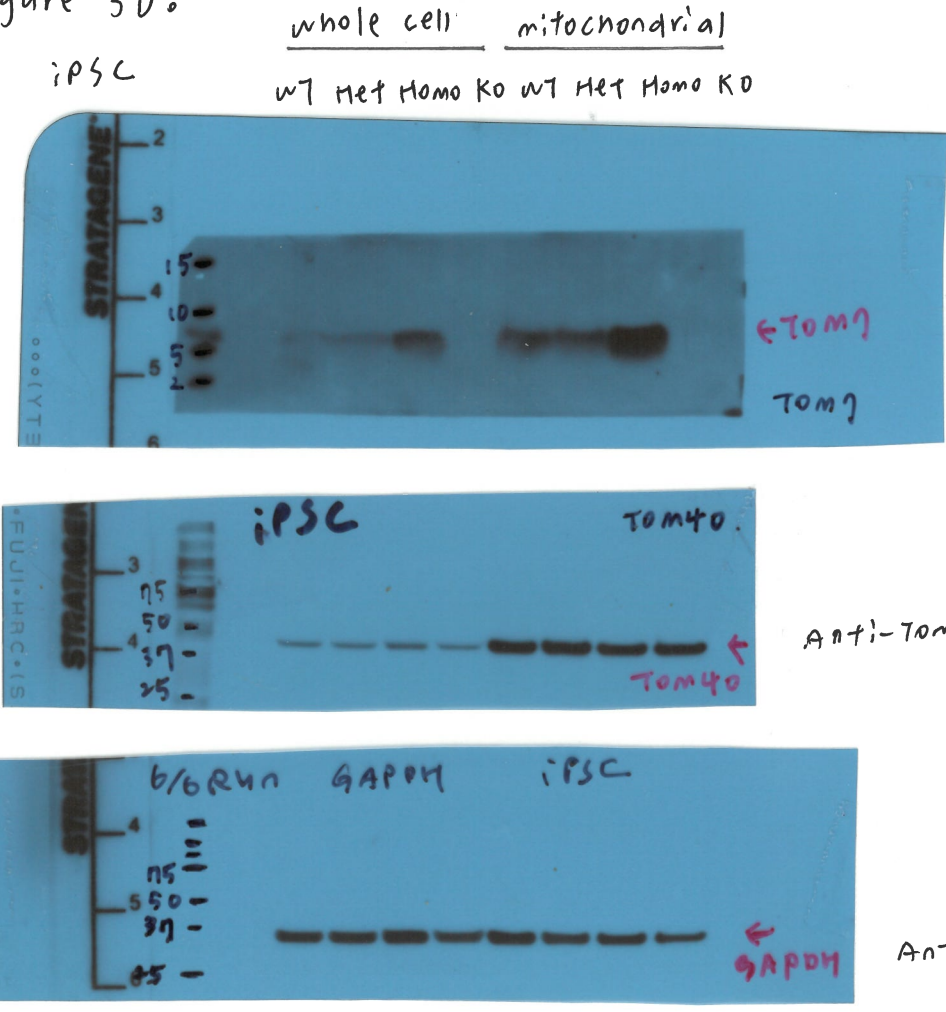
Figure 3C.



Anti-Tom7 (Thermo)
 1° 1:500, 3 days, 0/W.
 2° 1:5000.

Anti-GAPDH
 1° 1:20,000
 2° 1:40,000

Figure 3D.



Anti-Tom7

Anti-Tom40.

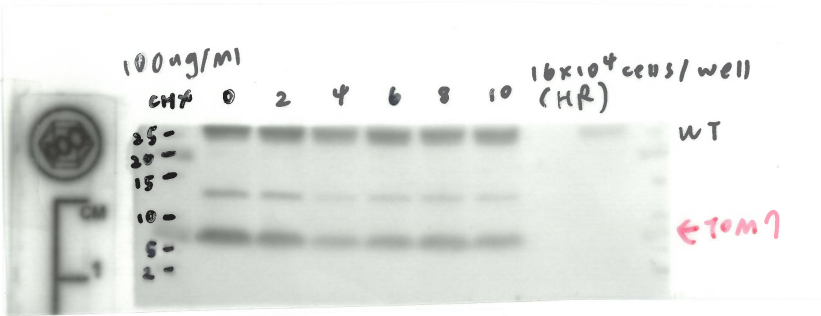
Anti-GAPDH-HRP.

Protein Half Life of Tom7
Figure 3E.

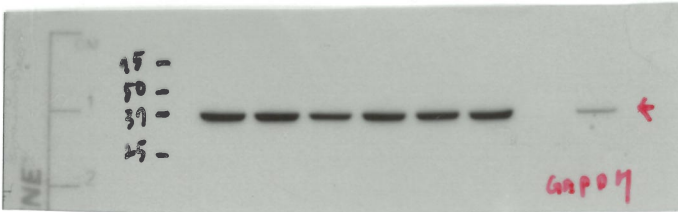
(Negative control: Tom7 Ab)

iEndo Tom7 WT cells iEndo Tom7 KO cells

WT



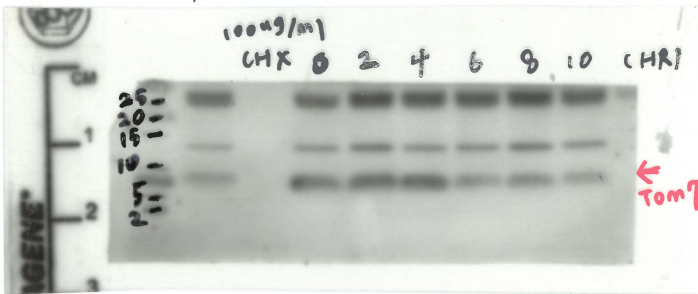
Anti-
Ab: Tom7 (Thermo)



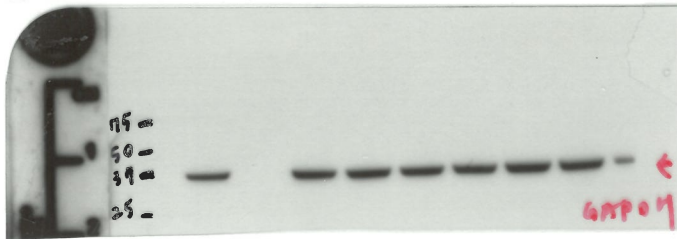
Anti-
Ab: GAPDH-HRP (Santa Cruz)

HET

X iEndo Tom7 HET cells



Anti-
Ab: Tom7 (Thermo)

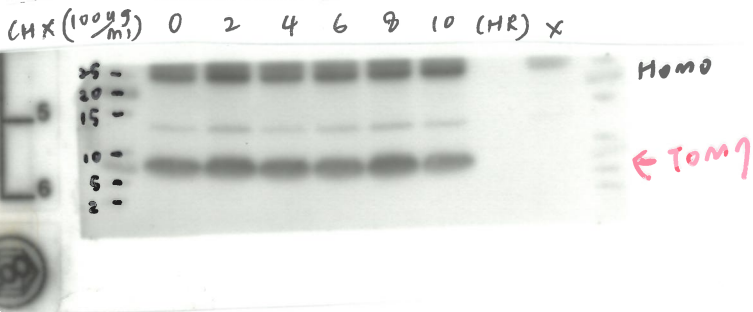


Anti-
Ab: GAPDH-HRP (Santa Cruz)

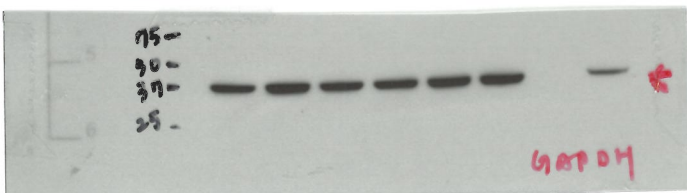
(Negative control: Tom7 Ab)

iEndo Tom7 Homo cells iEndo Tom7 KO cells

Homo

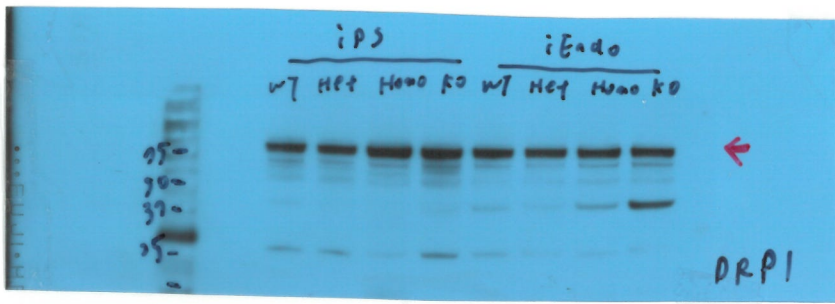


Anti-
Ab: Tom7 (Thermo)

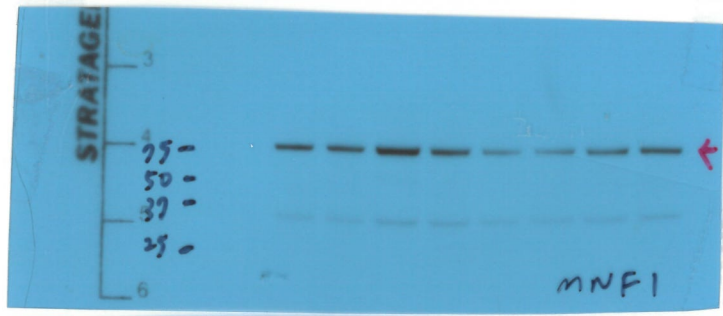


Anti-
Ab: GAPDH-HRP (Santa Cruz)

Figure 3L. (only "iEndo" were shown)



Anti-DRP1 (ProteinTech)
1° 1:1000
2° 1:10,000



Anti-MNF1 (ProteinTech)
1° 1:2000
2° 1:8000

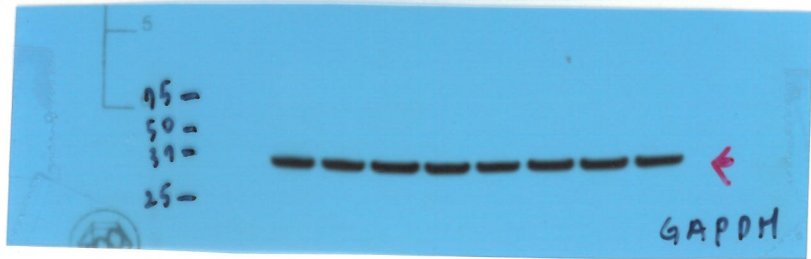
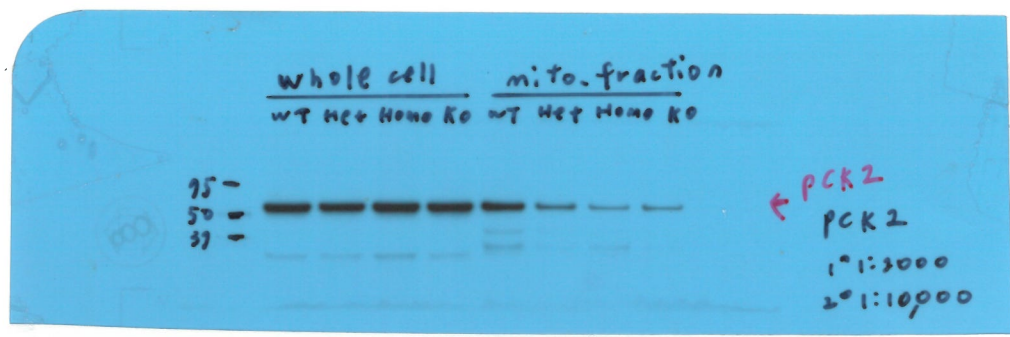
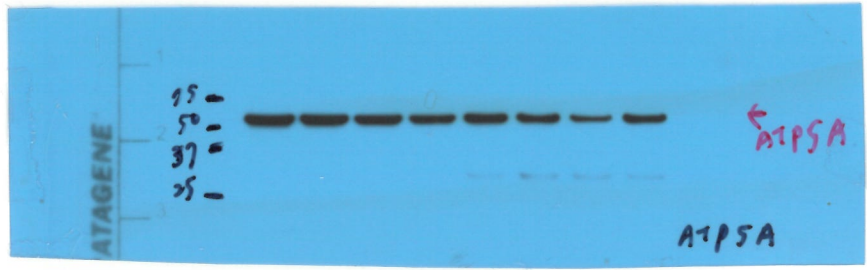


Figure 4C



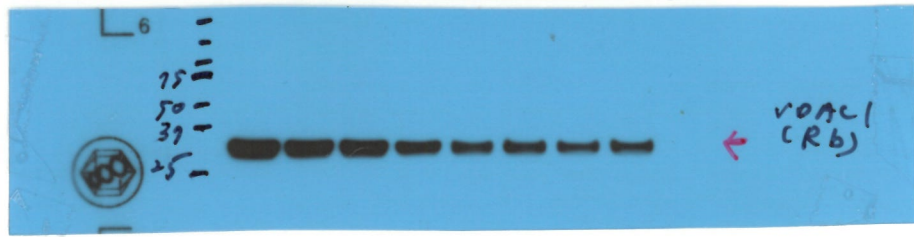
Anti-pck2
(ProteinTech)



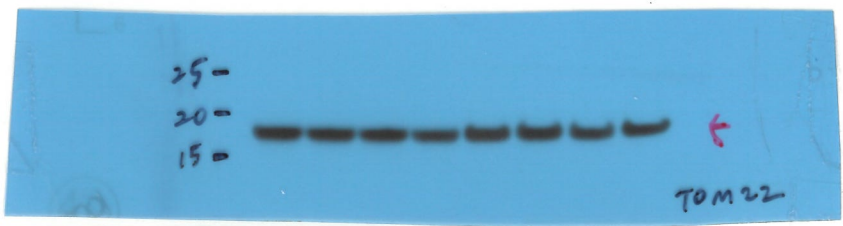
Anti-ATP5A [15H4C4]
(Abcam)



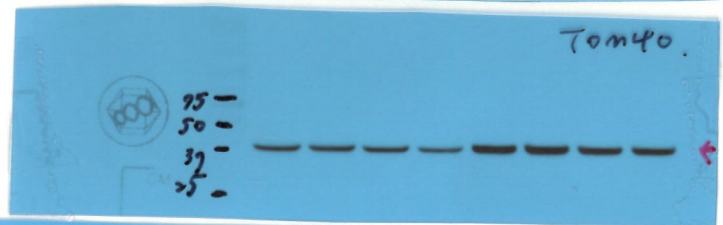
Anti-ATPH
(ProteinTech)



Anti-VDAC1
(Abcam)



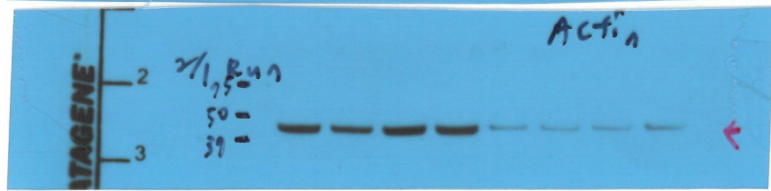
Anti-TOM22 (Thermo)



Anti-TOM40
(ProteinTech)



Anti-d-Tubulin
(ProteinTech)



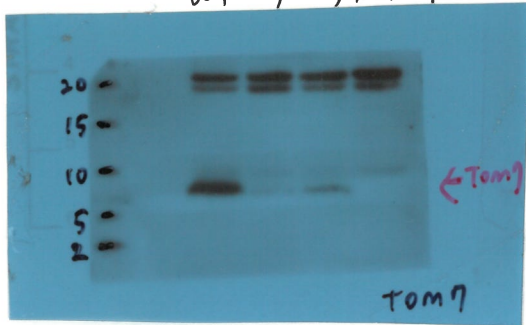
Anti-Actin-HRP
(Santa Cruz)



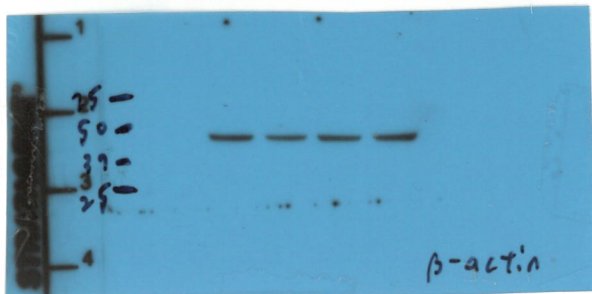
Anti-GAPDH-HRP
(Santa Cruz)

Figure 5A.

zebrafish-brain
WT 04/+ 07/+ 04/del



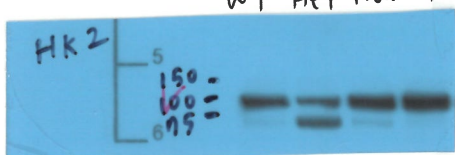
Anti-TOM7
(Thermo)
1° 1:500, 2 days o/w.
2° 1:5,000.



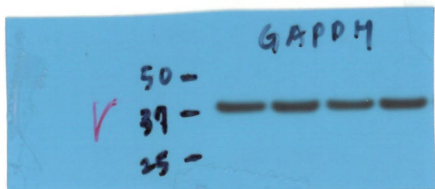
Anti-Actin-HRP.
(Santa Cruz).

Figure 69.

iPSC
WT Het Homo KO



Anti-HK2 (ProteinTech)
1° 1:15,000
2° 1:50,000



Anti-GAPDH-HRP.
(Santa Cruz)

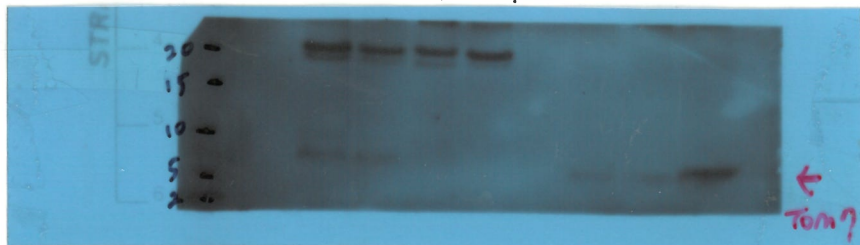
Figure 7c.

patient's iPSC

x x x x

Edited

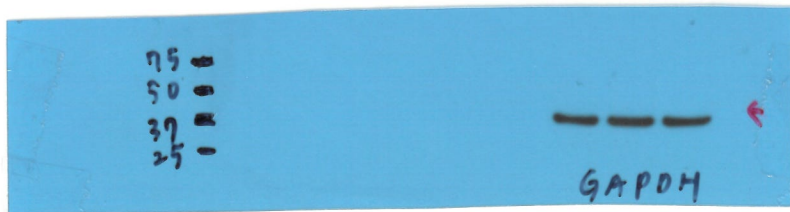
WT Het patient



Anti-TOM7
(Thermo)

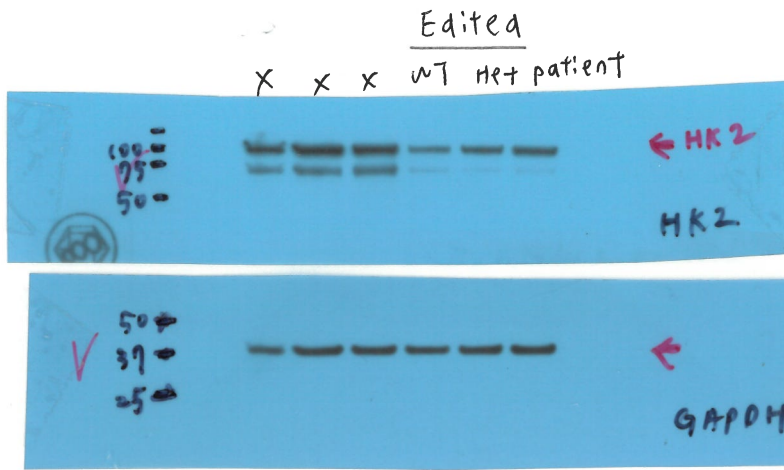


Anti-TOM40
(ProteinTech)



Anti-GAPDH-HRP
(Santa Cruz)

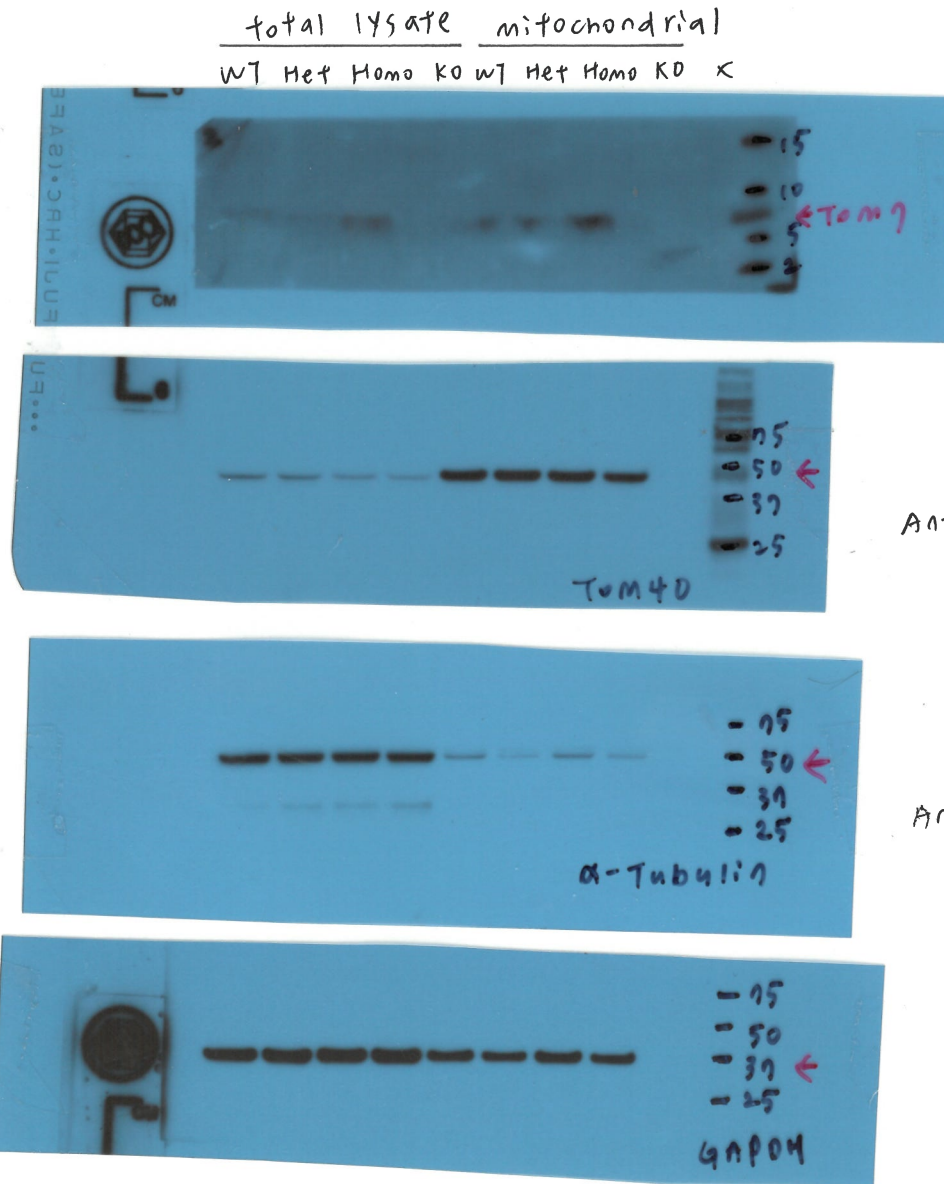
Figure 7J.



Anti-HK2 (ProteinTech)
 1° 1:15,000
 2° 1:50,000

Anti-GAPDH-HRP
 (Santa Cruz)
 1° 1:15,000

Figure S5E.



Anti-Tom7 (Thermo)
 1° 1:500, 2 days O/N
 2° 1:5000

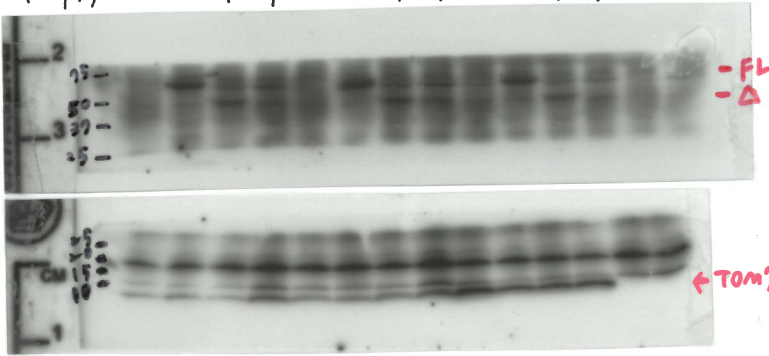
Anti-Tom40 (ProteinTech)

Anti- α -Tubulin (ProteinTech)

Anti-GAPDH-HRP (Santa Cruz)

Figure 5B A

	WT				Het				Homo			
CCCp	-	+	-	+	-	+	-	+	-	+	-	+
M9132	-	-	+	+	-	-	+	+	-	-	+	+



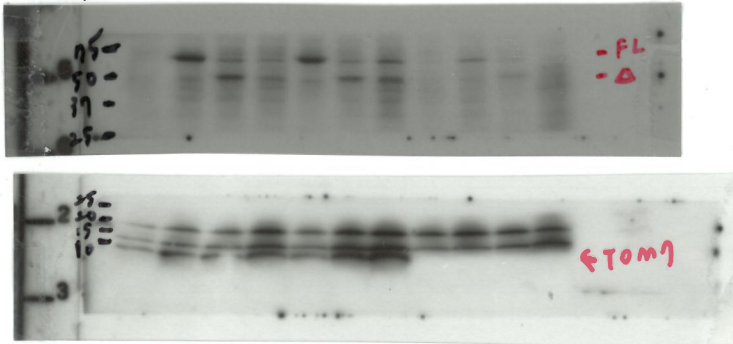
Input: 20x10⁶ cells/lane.

Anti-PINK1
(Cell Signaling, cat#6946)

1° 1:1000
2° 1:10,000.

Anti-TOM7
(Thermo)
1° 1:500
2° 1:5000.

	WT				Het				KO			
CCCp	-	+	-	+	-	+	-	+	-	+	-	+
M9132	-	-	+	+	-	-	+	+	-	-	+	+

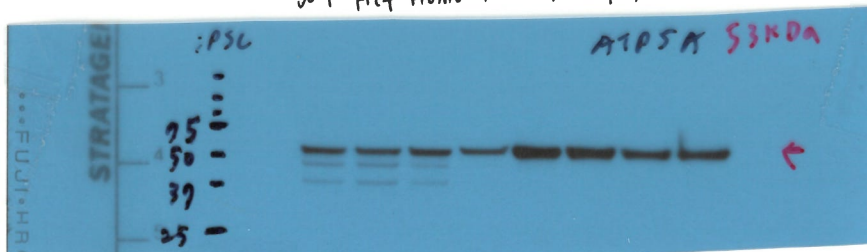


Anti-PINK1
(Cell Signaling)

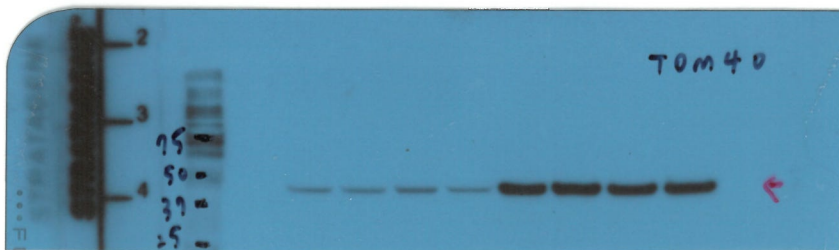
Anti-TOM7
(Thermo)

Figure 5B C

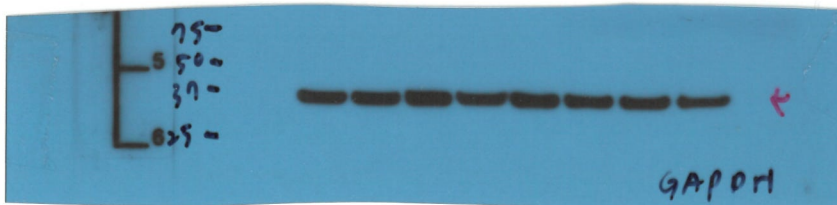
iPSC	whole cell				mitochondrial			
	WT	Het	Homo	KO	WT	Het	Homo	KO



Anti-ATP5A (Abcam)
1° 1:20,000
2° 1:40,000.



Anti-TOM40
(ProteinTech)
1° 1:20,000
2° 1:40,000.



Anti-GAPDH-HRP
(Santa Cruz)

