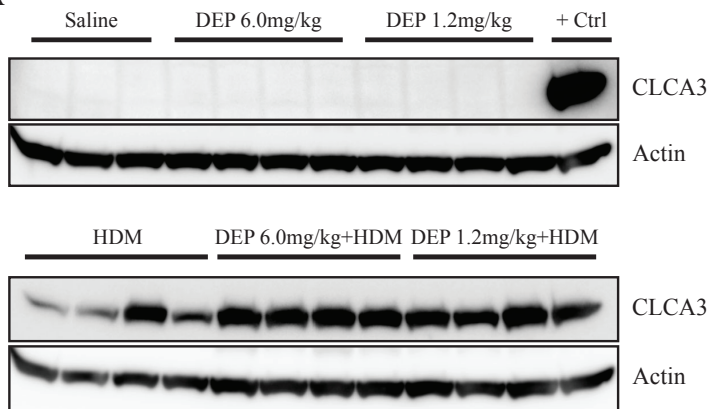
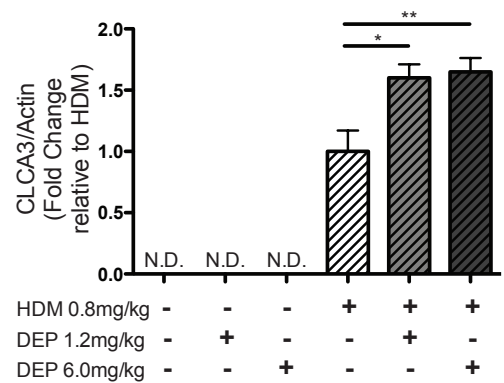


**A****B**

**Supplementary Figure 5. Goblet cell metaplasia following DEP and allergen exposure.** (A) Western blots of CLCA3 and Actin in lung homogenates, both antibodies were applied to the same blots. Each lane represents individual mice from each group. (B) Densitometry analysis of Western blots quantitating CLCA3 levels and corrected to Actin; fold change relative to the HDM group. N.D.= no detected. Statistical significance was determined to be  $p < 0.05$  (\*),  $p < 0.01$  (\*\*), and  $p < 0.001$  (\*\*\*) or not significant if  $p > 0.05$  (N.S.). Error bars shown represent the standard error of mean ( $\pm$ SEM). The number of animals per group was 6-11.