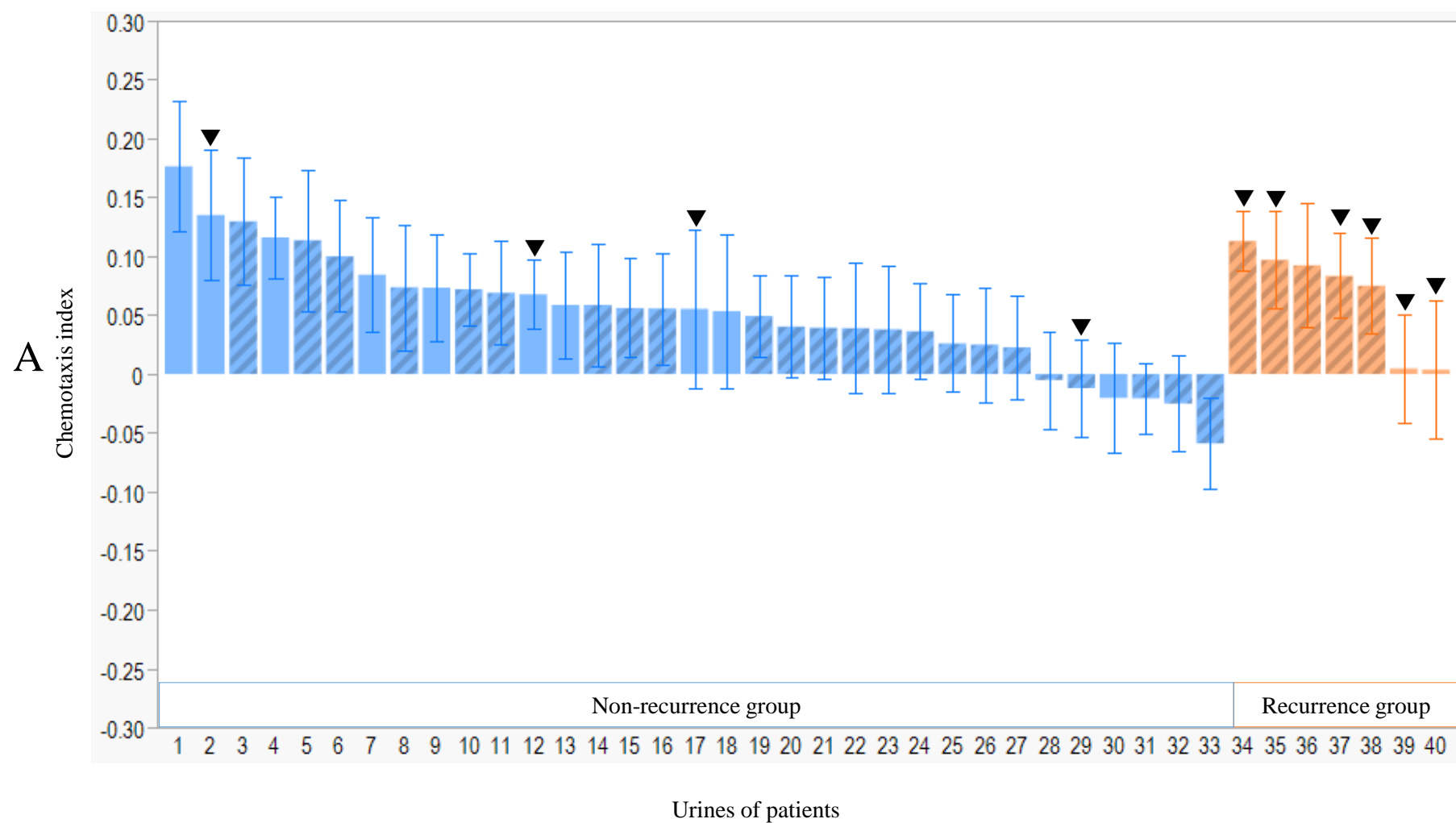
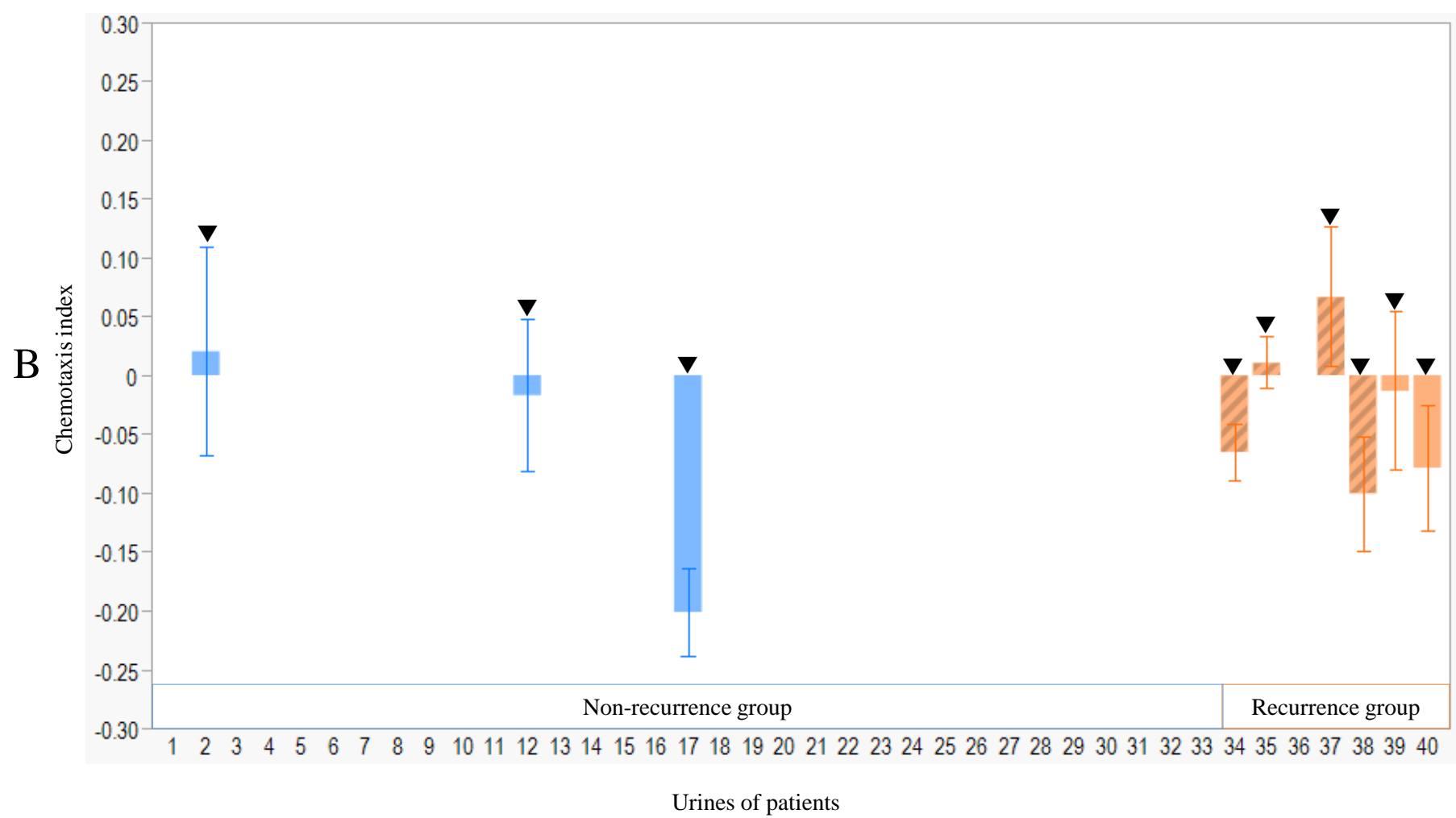


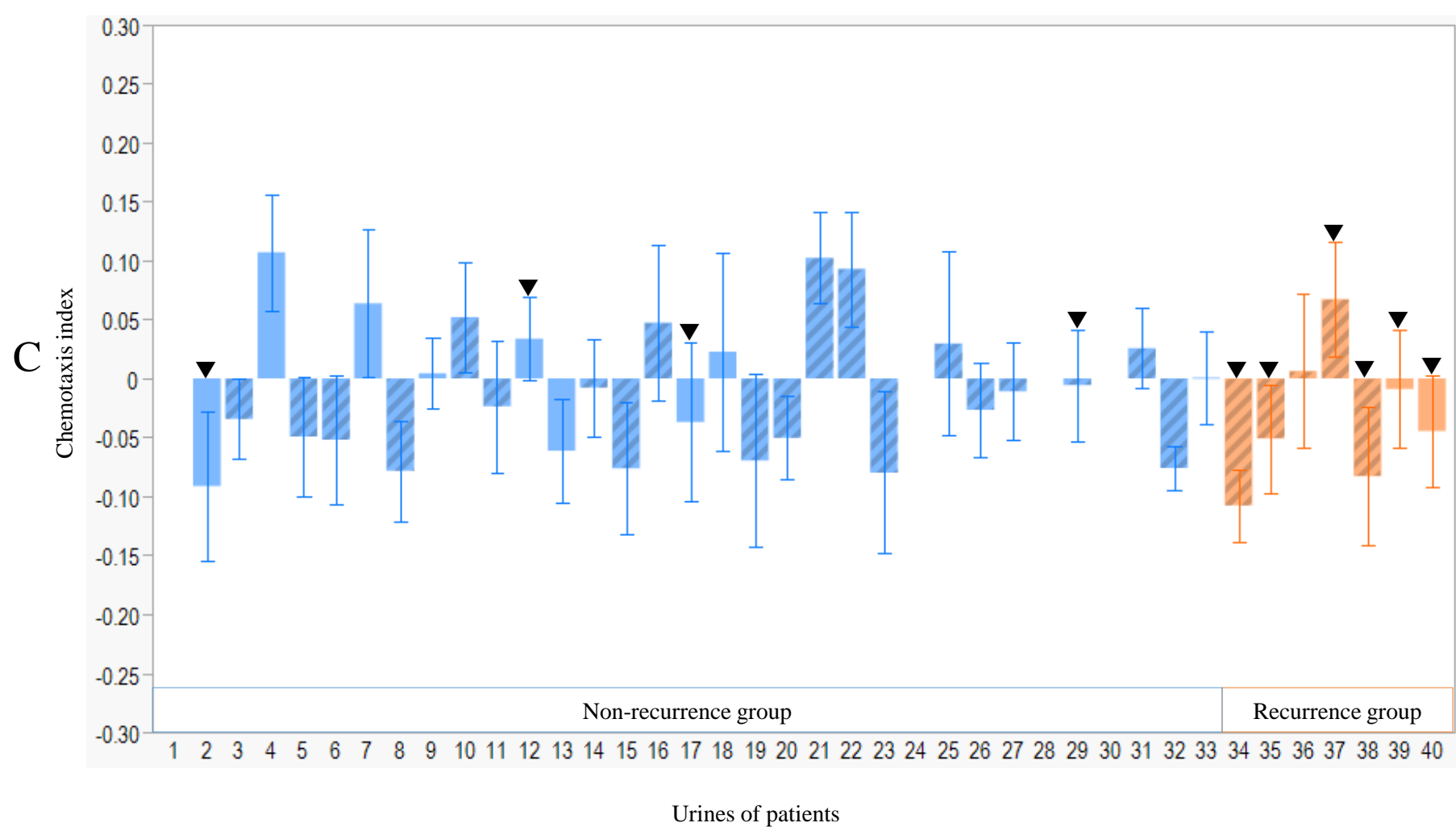
Before chemotherapy and/or surgery



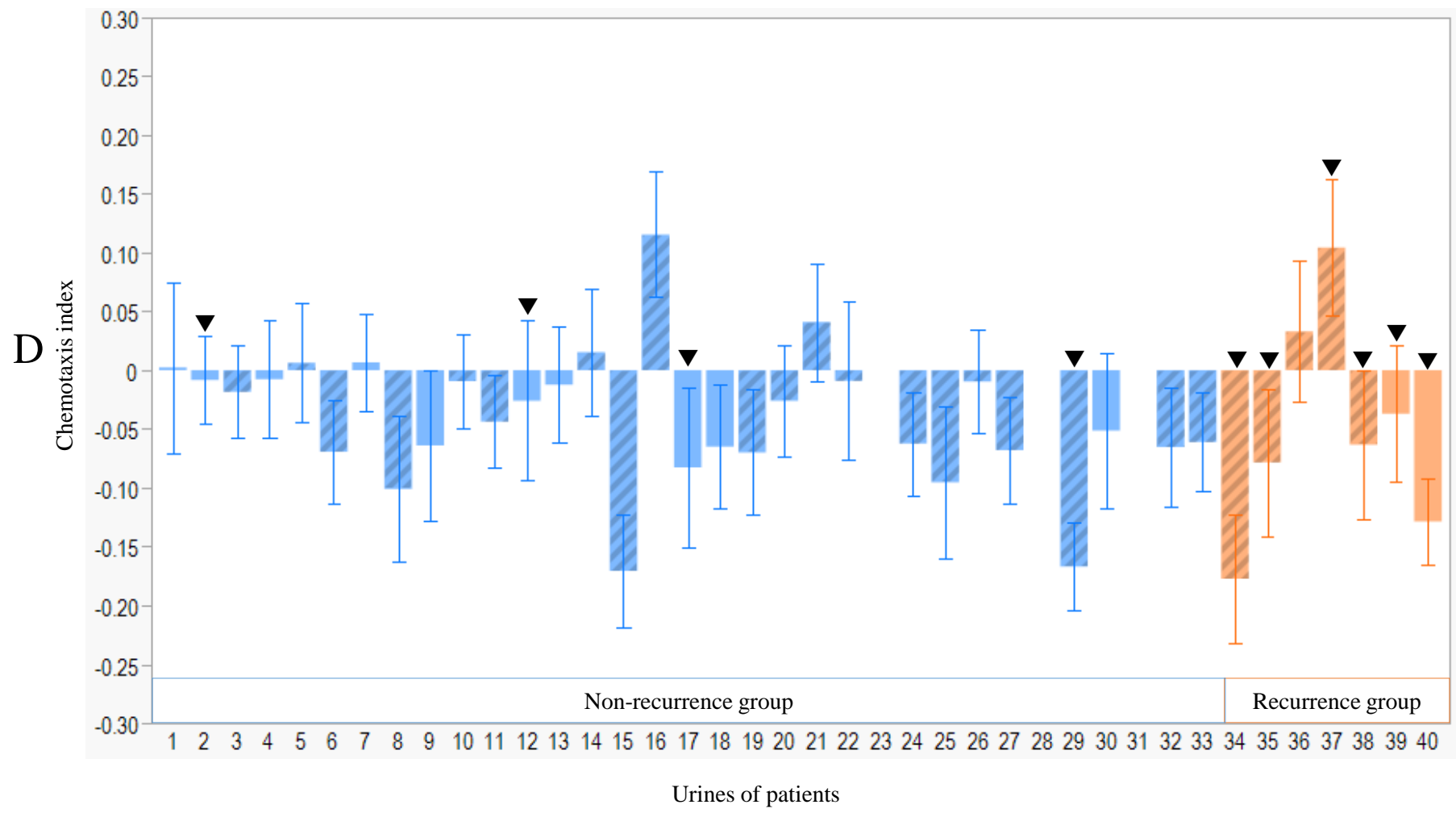
After chemotherapy



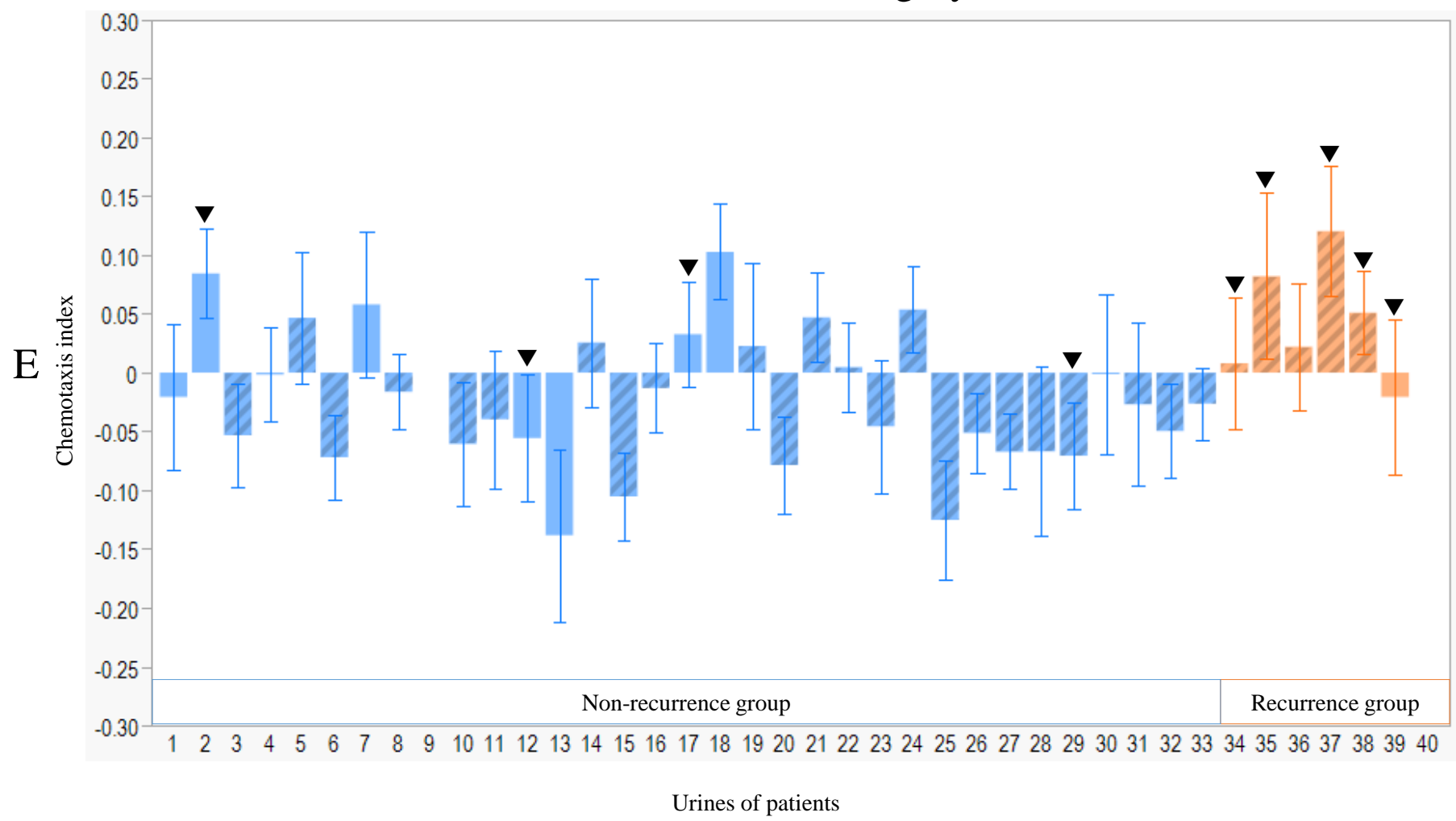
1 month after surgery



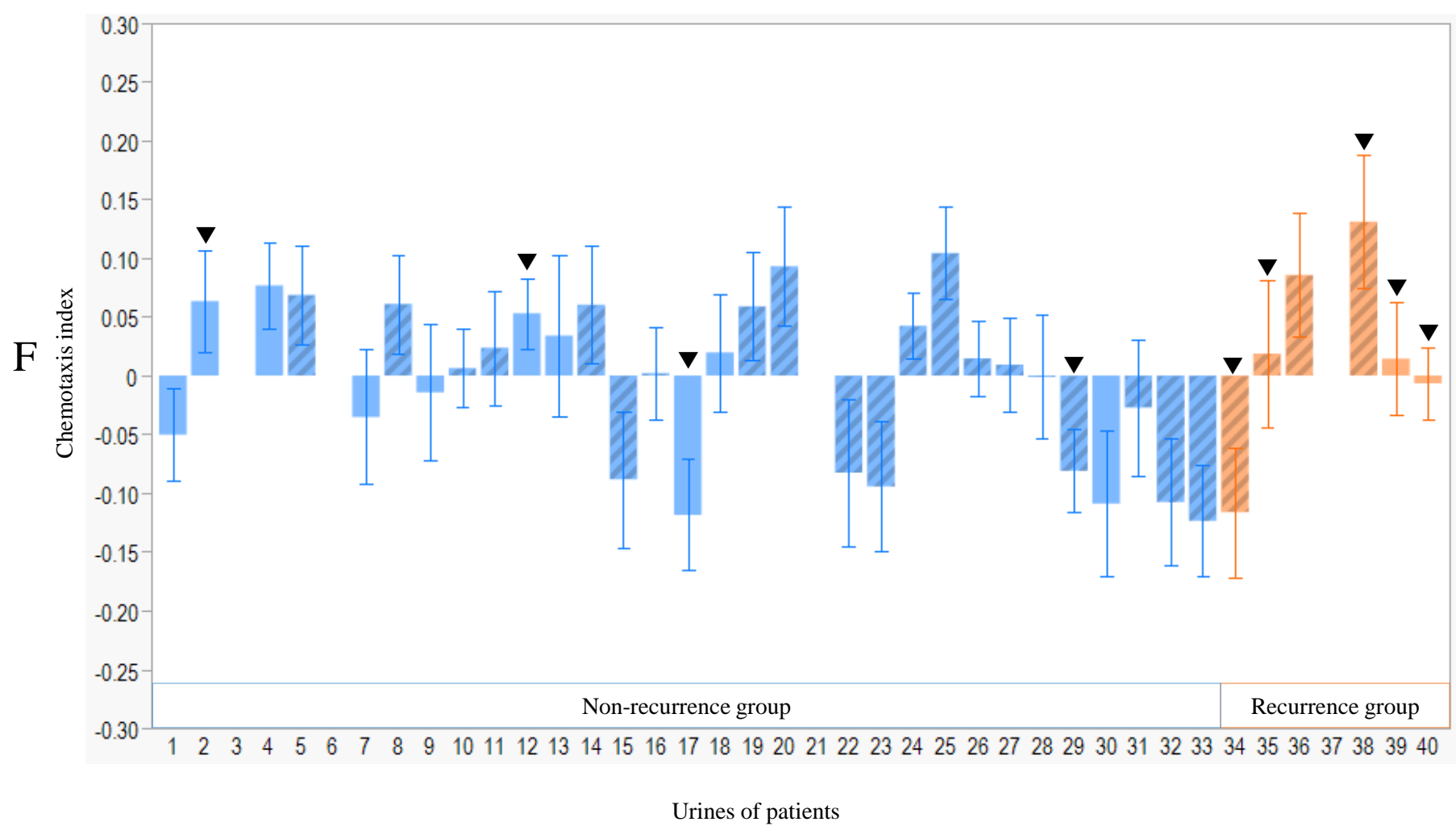
3 months after surgery



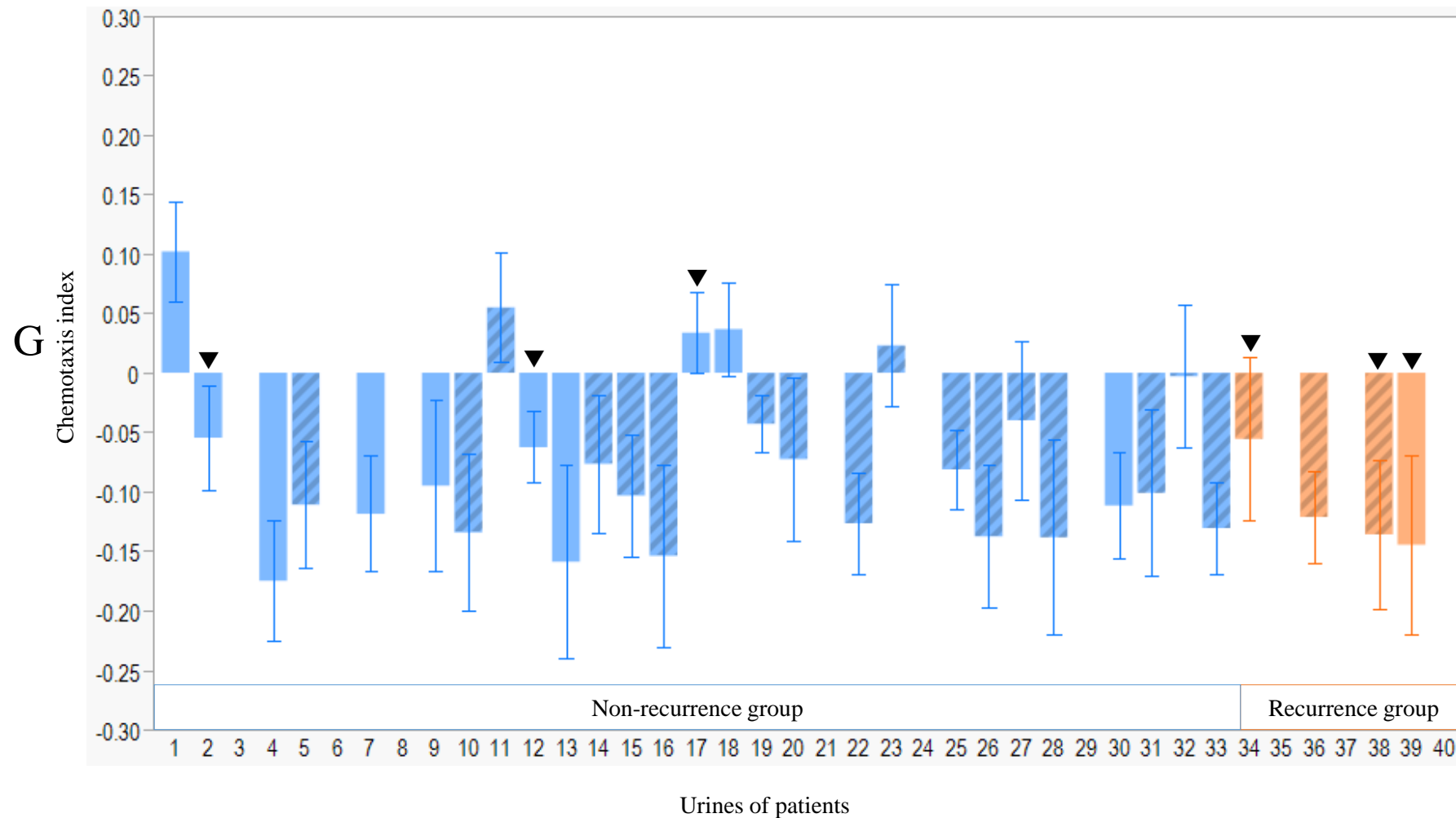
6 months after surgery



1 year after surgery



2 years after surgery



Supplemental Figure 1. Comparison of chemotaxis indexes of 40 cancer cases before and after surgery (100-fold dilution). The *C. elegans* chemotaxis assays were performed using urine samples collected at before chemotherapy and/or surgery and after chemotherapy, 1-month, 3-month, 6-month, 1-year, and 2-year after surgery from 40 cancer patients. The chemotaxis indexes were calculated based on the chemotaxis assays (100-fold dilution) and aligned in bar graphs with the order from highest to lowest (samples numbered as 1 to 40) at the timepoint of sampling before chemotherapy and/or surgery. Urine samples tested: (A) before chemotherapy and/or surgery, After chemotherapy (B), 1 month (C), 3 months (D), 6 months (E), 1 year (F), and 2 years (G) after surgery. Orange bars: patients with recurrence, and diagonal line bars; patients with vascular invasion, and black arrow heads: patients with chemotherapy. Error bars represented the standard error of the mean.